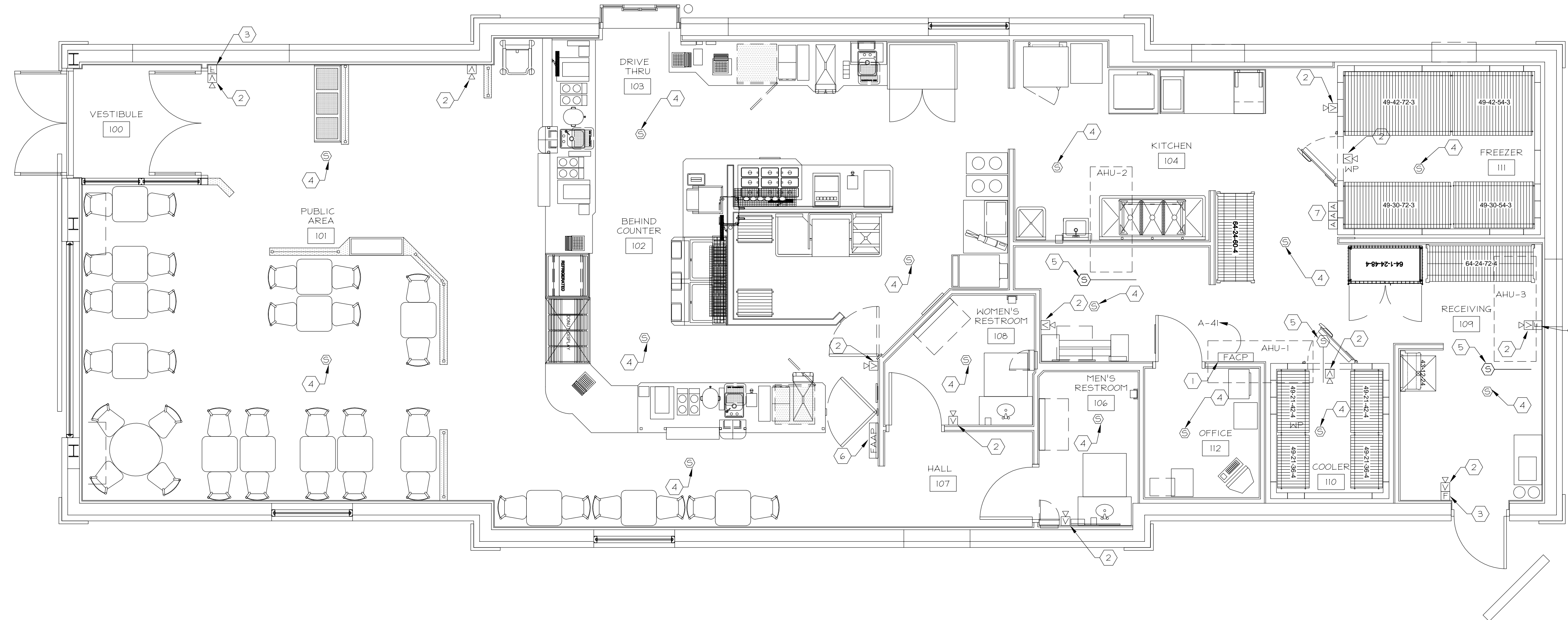


GENERAL NOTES

A. ANY CHANGES MADE TO THE DESIGN IDENTIFIED ON THESE DRAWINGS AND/OR ASSOCIATED SPECIFICATIONS SHALL BE SUBMITTED TO THE ENGINEER/ARCHITECT OF RECORD FOR REVIEW AND APPROVAL PRIOR TO MAKING ANY MODIFICATIONS TO THE PROJECT. ANY LIABILITY AS A RESULT OF DESIGN MODIFICATIONS, AS WELL AS ANY COSTS ASSOCIATED WITH SUCH MODIFICATIONS, MADE WITHOUT THE WRITTEN APPROVAL OF THE ENGINEER/ARCHITECT OF RECORD SHALL BECOME THE RESPONSIBILITY OF THE CONTRACTOR.

CODED NOTES

- ① PROVIDE SIMPLEX 4005 FIRE ALARM PANEL WITH BATTERY BACK-UP AND ALL ASSOCIATED WIRING FOR AUDIO/VISUAL INDICATING DEVICES, SMOKE/HEAT DETECTORS, AND PULL STATIONS. MOUNT TOP OF PANEL AT 72" A.F.F.
- ② PROVIDE FLUSH MOUNTED AUDIO/ VISUAL INDICATING DEVICES, SIMPLEX #4903 SERIES, (75 CANDELA) MOUNTED AT 80" A.F.F.
- ③ DOUBLE ACTION PUSH-TYPE MANUAL PULL STATION, SIMPLEX #2099-9756.
- ④ SIMPLEX 4098-9602 CEILING MOUNTED HEAT AND SMOKE DETECTOR WITH 135°F FIXED ELEMENT. VERIFY MOUNTING LOCATIONS WITH BUILDING OFFICIAL.
- ⑤ DUCT MOUNTED SMOKE DETECTOR IN ROOFTOP UNIT. PROVIDE ALL NECESSARY EQUIPMENT TO CONNECT DETECTOR TO FIRE ALARM CONTROL PANEL. REFER TO SHEET E2 FOR ADDITIONAL INFORMATION ON DETECTOR.
- ⑥ SIMPLEX 4601 SERIES ANNUNCIATOR WITH 4601-9153 FOUR GANG COVER PLATE, 4601-9104 LED ANNUNCIATOR MODULES, AND 4601-9106 SYSTEM STATUS MODULE AND CONTROL SWITCH.
- ⑦ REMOTE ANNUNCIATOR TEST SWITCH FOR ROOFTOP UNIT SMOKE DETECTORS. REFER TO SHEET E2 FOR ADDITIONAL INFORMATION.



FIRE ALARM PLAN
1/4"=1'-0"

Tim Hortons
1408 CONGRESS STREET
PORTLAND, ME 04102

FIRE ALARM PLAN

SAI # 08138
DRAWING NUMBER:
E7

wd partners
7007 Discovery Blvd
Dublin, OH 43017
614.884.4000
614.884.7777 F
wdpartners.com

Atlanta
Boston
Chicago
Dallas
Los Angeles
Miami
Sacramento

REVISIONS:

DATE ISSUED:
07-02-2008

DRAWN BY: CG CHECKED BY: JD