

PANEL ID: A LOCATION: RECEIVING RM. 109 SERVICE: 208 VOLTS PHASE-TO-PHASE 120 VOLTS PHASE-TO-GROUND 3 PHASE, 4 WIRE INTERRUPTING RATING 65 KA RMS @ FULL @ SERIES		PANEL MAINS 150 AMPERES @ MLO @ MCB @ 200% ADDITIONAL LUGS @ SUB-FEED @ THRU-FEED		NEUTRAL @ NONE @ 100% @ 200% GROUND BUS @ STANDARD @ ISOLATED		PANELBOARD TYPE MFR: CUTLER-HAMMER TYPE: P1 ENCLOSURE NEMA TYPE: SURFACE MOUNTING: SURFACE INTEGRAL TVSS PER PHASE KA: N/A		PANEL ID: B LOCATION: ELECTRICAL ROOM SERVICE: 208 VOLTS PHASE-TO-PHASE 120 VOLTS PHASE-TO-GROUND 3 PHASE, 4 WIRE INTERRUPTING RATING 65 KA RMS @ FULL @ SERIES		PANEL MAINS 150 AMPERES @ MLO @ MCB @ 200% ADDITIONAL LUGS @ SUB-FEED @ THRU-FEED		NEUTRAL @ NONE @ 100% @ 200% GROUND BUS @ STANDARD @ ISOLATED		PANELBOARD TYPE MFR: CUTLER-HAMMER TYPE: P1 ENCLOSURE NEMA TYPE: SURFACE MOUNTING: SURFACE INTEGRAL TVSS PER PHASE KA: N/A	
---	--	--	--	--	--	--	--	---	--	--	--	--	--	--	--

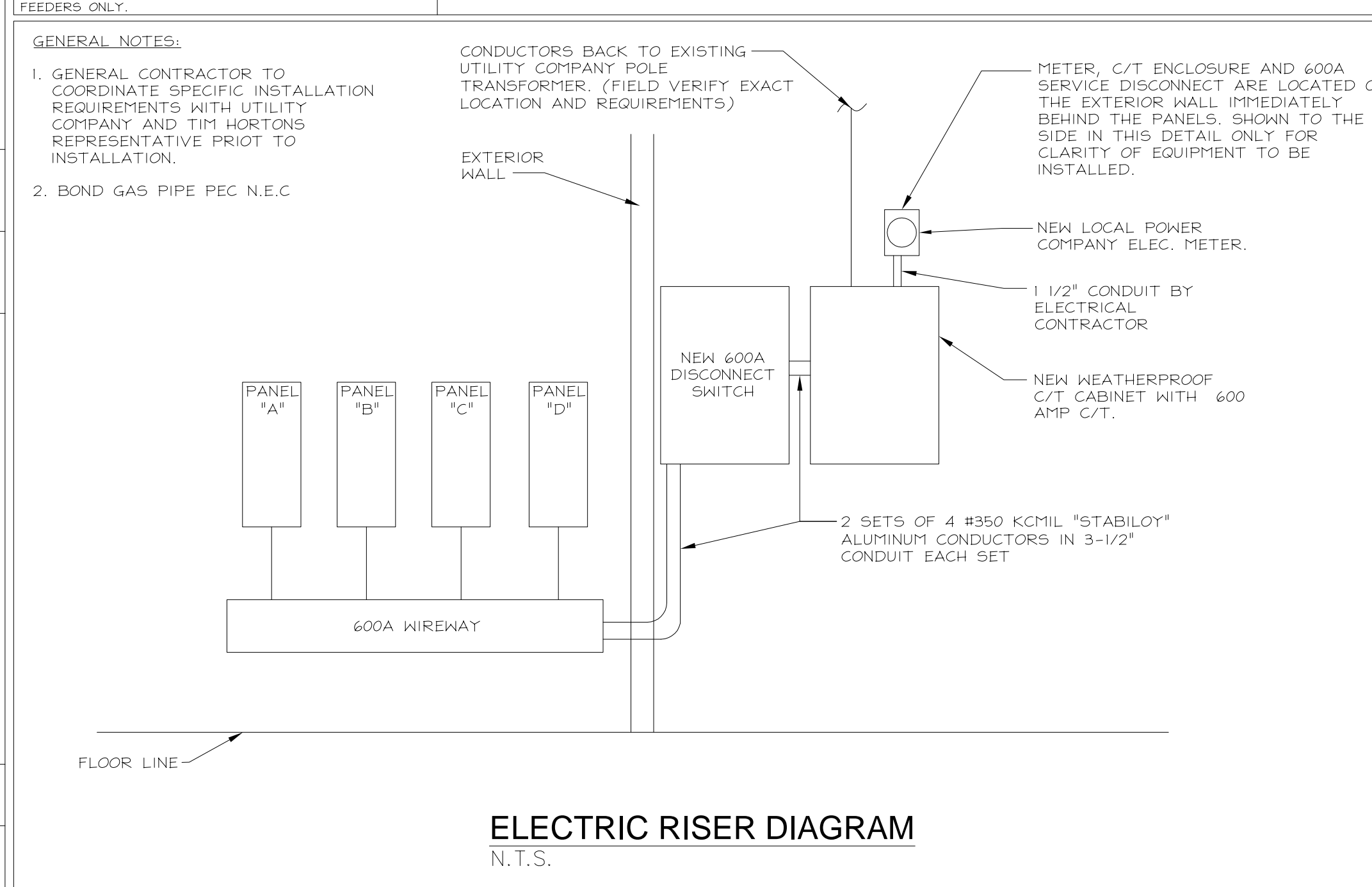
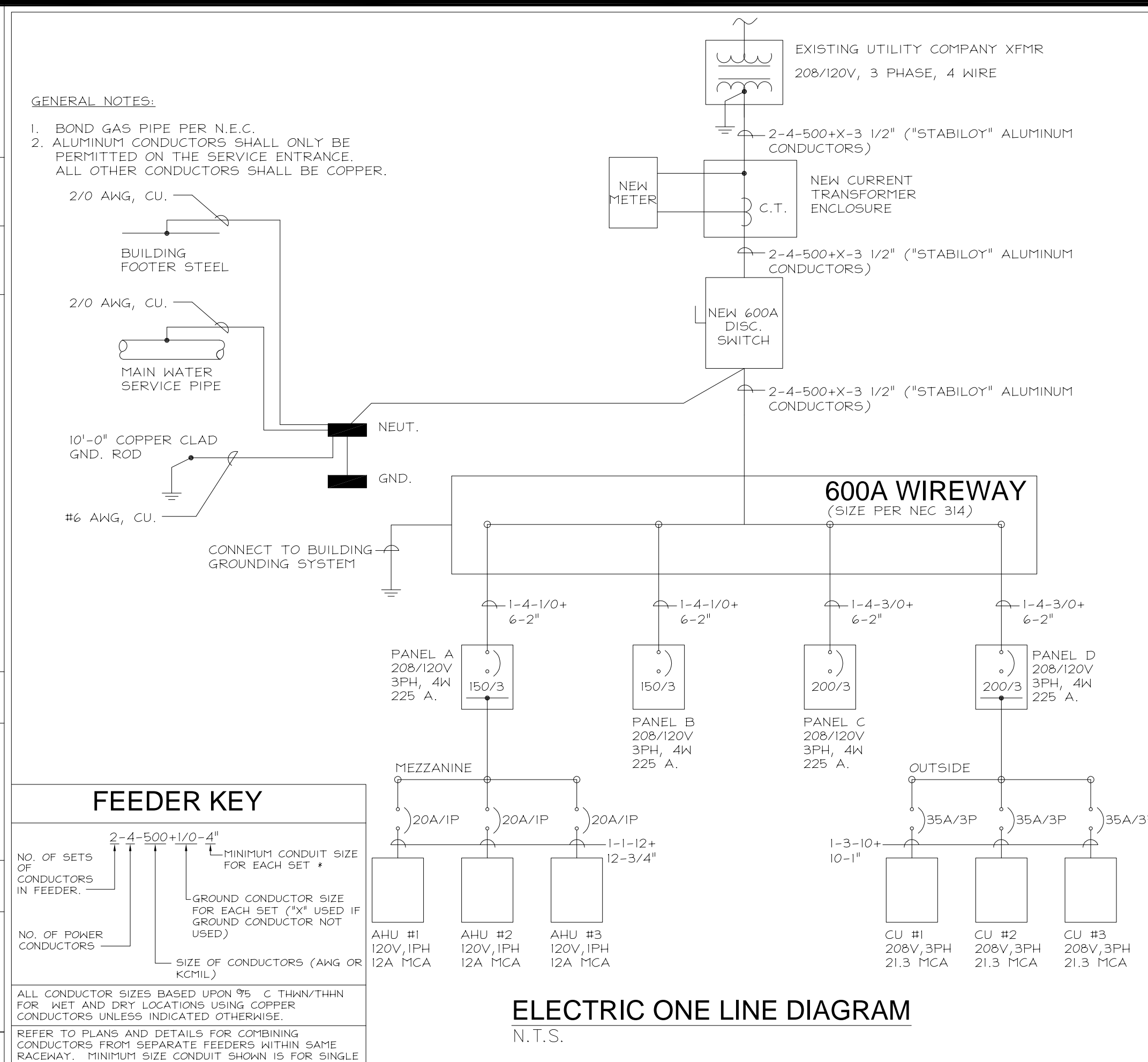
CIRCUIT KVA	LOAD DESCRIPTION	BREAKER SIZE (AMP/P)	CIRCUIT NO. AND PHASE ABC	BREAKER SIZE (AMP/P)	LOAD DESCRIPTION	CIRCUIT KVA	CONNECTED KVA			DEMAND KVA			PANEL TOTALS
							PHA	PHB	PHC	PHA	PHB	PHC	
0.94	NIGHT LIGHTS	20/1	1 X 2	20/1	SITE POLE LITS	1.62	0.40	0.00	0.00	1.25	0.00	0.00	CONNECTED

CIRCUIT KVA	LOAD DESCRIPTION	BREAKER SIZE (AMP/P)	CIRCUIT NO. AND PHASE ABC	BREAKER SIZE (AMP/P)	LOAD DESCRIPTION	CIRCUIT KVA	CONNECTED KVA			DEMAND KVA			PANEL TOTALS
							PHA	PHB	PHC	PHA	PHB	PHC	
5.06	DISHWASHER	60/3	1 X 2	20/1	POWER WSK MIXER	0.35	3.10	0.00	0.00	3.10	0.00	0.00	CONNECTED

CIRCUIT KVA	LOAD DESCRIPTION	BREAKER SIZE (AMP/P)	CIRCUIT NO. AND PHASE ABC	BREAKER SIZE (AMP/P)	LOAD DESCRIPTION	CIRCUIT KVA	CONNECTED KVA			DEMAND KVA			PANEL TOTALS
							PHA	PHB	PHC	PHA	PHB	PHC	
0.94	NIGHT LIGHTS	20/1	1 X 2	20/1	SITE POLE LITS	1.62	0.40	0.00	0.00	1.25	0.00	0.00	CONNECTED

ELECTRIC LOAD SUMMATION			
LOAD DESCRIPTION	CONNECTED	DEMAND	
INTERIOR LIGHTING	4.260	5.325	
RECEPTACLES	11.400	10.700	
SIGNS	3.000	3.750	
FAN MOTORS	2.870	3.588	
KITCHEN EQUIP.	117.140	76.141	
COOLING	27.360	27.360	
TOTAL KW	163.030	135.176	
TOTAL CONNECTED AMPS:	453 @ 208V, 3PH		
TOTAL DEMAND AMPS:	376 @ 208V, 3PH		

NOTE:
 ANY CHANGES MADE TO THE DESIGN IDENTIFIED ON THESE DRAWINGS AND/OR ASSOCIATED SPECIFICATIONS SHALL BE SUBMITTED TO THE ENGINEER/ARCHITECT OF RECORD FOR REVIEW AND APPROVAL PRIOR TO MAKING ANY MODIFICATIONS TO THE PROJECT. ANY LIABILITY AS A RESULT OF DESIGN MODIFICATIONS, AS WELL AS ANY COSTS ASSOCIATED WITH SUCH MODIFICATIONS, MADE WITHOUT THE WRITTEN APPROVAL OF THE ENGINEER/ARCHITECT OF RECORD SHALL BECOME THE RESPONSIBILITY OF THE CONTRACTOR.



GENERAL NOTES:
 1. ALL CIRCUIT BREAKERS SHALL BE BOLT-ON ONLY.
 2. ALL BUSSING SHALL BE COPPER ONLY.
 3. CURRENT LIMITING FUSES SHALL BE A2K TYPE OR ABOVE.
 4. PANELS "A", "B", "C", AND "D" SHALL BE CIRCUITED AS SHOWN.
 5. CONFIRM INTERRUPTING CAPACITY REQUIREMENTS BEFORE ORDERING PANELS.
 6. ELECTRICAL CONTRACTOR TO FURNISH AND INSTALL WARNING LABEL ON ALL PANELS REGARDING ARC FLASH HAZARD AS REQUIRED BY NEC ARTICLE 110.16.

KITCHEN EQUIPMENT WIRING SCHEDULE CODED NOTES:
 (1) RECEPTACLE NEMA CONFIGURATION FOR EQUIPMENT SHALL MATCH WITH TYPE OF PLUG PROVIDED WITH POWER CORD. COORDINATE WITH EQUIPMENT SUPPLIER FOR REQUIREMENTS.
 (2) ELECTRICAL CONTRACTOR TO PROVIDE PLUG AND CORD.
 (3) ELECTRICAL CONTRACTOR SHALL VERIFY MOUNTING HEIGHTS IN FIELD WITH PROJECT MANAGER AND EQUIPMENT SUPPLIER PRIOR TO ROUGH-IN.
 (4) ELECTRICAL CONTRACTOR TO PROVIDE SINGLE RECEPTACLE ONLY.
 (5) NOT USED.
 (6) ELECTRICAL CONTRACTOR SHALL PROVIDE DUPLEX RECEPTACLE ONLY WITH MOUNTING ROOM FOR TRANSFORMER. HOLD WIRING TIGHT TO BELOW COUNTER.
 44" - WALL OR AS SHOWN IN DETAIL 7 ON SHEET E4.
 (8) WHERE MULTIPLE CIRCUITS ARE RUN IN A COMMON CONDUIT, INCREASE WIRE SIZE AS NECESSARY TO COMPLY WITH THE NATIONAL ELECTRICAL CODE CONDUIT FILL AND CONDUCTOR DERATING REQUIREMENTS.

KITCHEN EQUIPMENT WIRING SCHEDULE

SYM.	ITEM	VOLTAGE PHASE	HP	KW	FLA	FEEDERS		TYPE OF CONNECTION	BRANCH BREAKER	MOUNTING HEIGHT (3)	REMARKS
						WIRE (8)	COND.				
3.2	HAND DRYER	120V, 1Ø	---	2.3	---	2 #10 #1	3/4"	DIRECT	30A/1P	42"	COORDINATE JUNCTION BOX MOUNTING HEIGHT WITH UNIT REQUIREMENTS.
6	RECEIVER (MUZAK)	120V, 1Ø	---	0.2	---	2 #12 #1	3/4"	PLUG-CORD	20A/1P	96"	PROVIDE 1" PLASTIC BUSHING FOR WIRES IN WALL BEHIND STEREO AMPLIFIER.

REVISIONS:

Atlanta
Boston
Chicago
Dallas
Denver
Los Angeles
Miami
Sacramento

W&P partners

7007 Discovery Blvd
Dublin, OH 43017
614.854.7777 F
wppartners.com

Tim Hortons

1408 CONGRESS STREET
PORTLAND, ME 04102

PANEL DIAGRAMS & ELECTRIC RISER DIAGRAM

DRAWN BY: CG CHECKED BY: JD

DATE ISSUED: 07-02-2008

SAI # 0818
DRAWING NUMBER: E3