

GENERAL NOTES

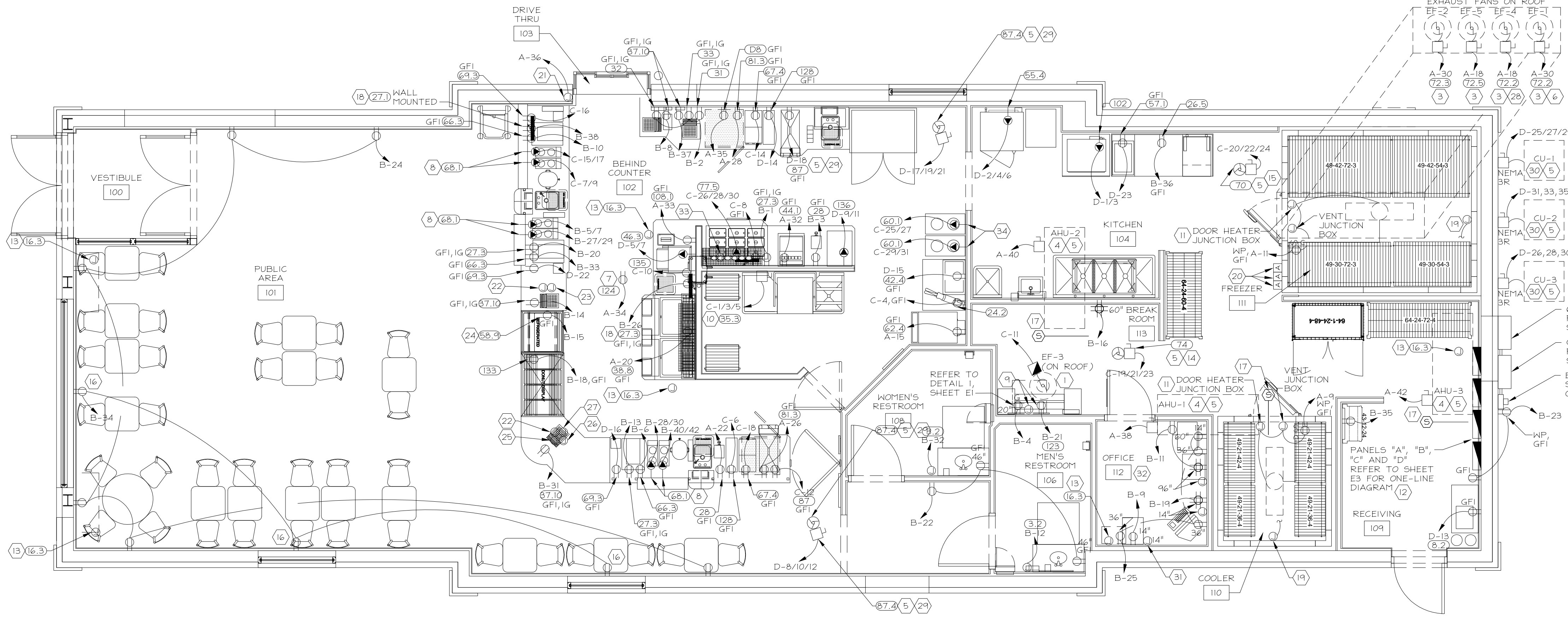
- ANY CHANGES MADE TO THE DESIGN IDENTIFIED ON THESE DRAWINGS AND/OR ASSOCIATED SPECIFICATIONS SHALL BE SUBMITTED TO THE ENGINEER/ARCHITECT OF RECORD FOR REVIEW AND APPROVAL PRIOR TO MAKING ANY MODIFICATIONS TO THE PROJECT. ANY LIABILITY AS A RESULT OF DESIGN MODIFICATIONS, AS WELL AS ANY COSTS ASSOCIATED WITH SUCH MODIFICATIONS, MADE WITHOUT THE WRITTEN APPROVAL OF THE ENGINEER/ARCHITECT OF RECORD SHALL BECOME THE RESPONSIBILITY OF THE CONTRACTOR.
- ELECTRICAL CONTRACTOR TO COORDINATE WORK WITH MECHANICAL, REFRIGERATION, AND EQUIPMENT CONTRACTORS, INCLUDING COOLER/FREEZER WORK.
- ELECTRICAL CONTRACTOR TO VERIFY ALL ROUGH-IN DIMENSIONS AND POWER REQUIREMENTS WITH KITCHEN EQUIPMENT SUPPLIER PRIOR TO ROUGH-IN.
- GENERAL CONTRACTOR IS TO VERIFY SIZE OF FAULT CURRENT CARRYING OFF PRIMARY SERVICE AND IS TO INSURE ITS COMPATIBILITY WITH DISTRIBUTION PANEL.
- GENERAL CONTRACTOR IS TO INSURE ADEQUATE CONDUIT SIZE FOR ELECTRICAL AND PHONE WIRING ON SITE AND INTO BUILDING.
- HEIGHTS INDICATED FOR RECEPTACLES AND JUNCTION BOXES ARE MEASURED FROM FINISH FLOOR TO THE CENTER OF THE BOX.
- ELECTRICAL CONTRACTOR IS RESPONSIBLE FOR RUNNING ALL TELEPHONE LINES. TELEPHONE LINES SHALL BE CATEGORY 5E.
- ALL CIRCUITS MAY BE CORRECTED TO THE LEAST AMOUNT OF CONDUIT RUN UNLESS NOTED OTHERWISE.
- SEE SHEET E5 FOR REGISTER SYSTEM CONDUITS AND DIAGRAMS.
- SEE KITCHEN EQUIPMENT WIRING SCHEDULE ON SHEET E3 FOR WIRING REQUIREMENTS AND MOUNTING HEIGHTS.
- SWITCHBOARD "DB1" WILL BE SUPPLIED BY TDL. THIS CONTRACTOR SHALL COORDINATE WITH THE TDL REPRESENTATIVE FOR DELIVERY OF THE SWITCHBOARD TO THE SITE. THIS CONTRACTOR SHALL UNLOAD SWITCHBOARD, SET IN PLACE, AND MAKE ALL REQUIRED CONNECTIONS.
- ALL 120 VOLT, 15 AND 20 AMP RECEPTACLES IN THE KITCHEN SHALL BE GFCI PROTECTED PER CODE USING GFCI TYPE RECEPTACLES. WHERE ISOLATED GROUND RECEPTACLES ARE IDENTIFIED, GFCI PROTECTION SHALL BE OBTAINED THROUGH THE USE OF GFCI CIRCUIT BREAKERS ON THOSE CIRCUITS.
- SEE SHEET M4 FOR LIGHTING CONTROL DIAGRAM AND NOTES.
- ALL CIRCUITS SHALL HAVE AN INDIVIDUAL NEUTRAL CONDUCTOR. NO SHARED NEUTRALS ARE PERMITTED.

MEZZANINE POWER NOTE

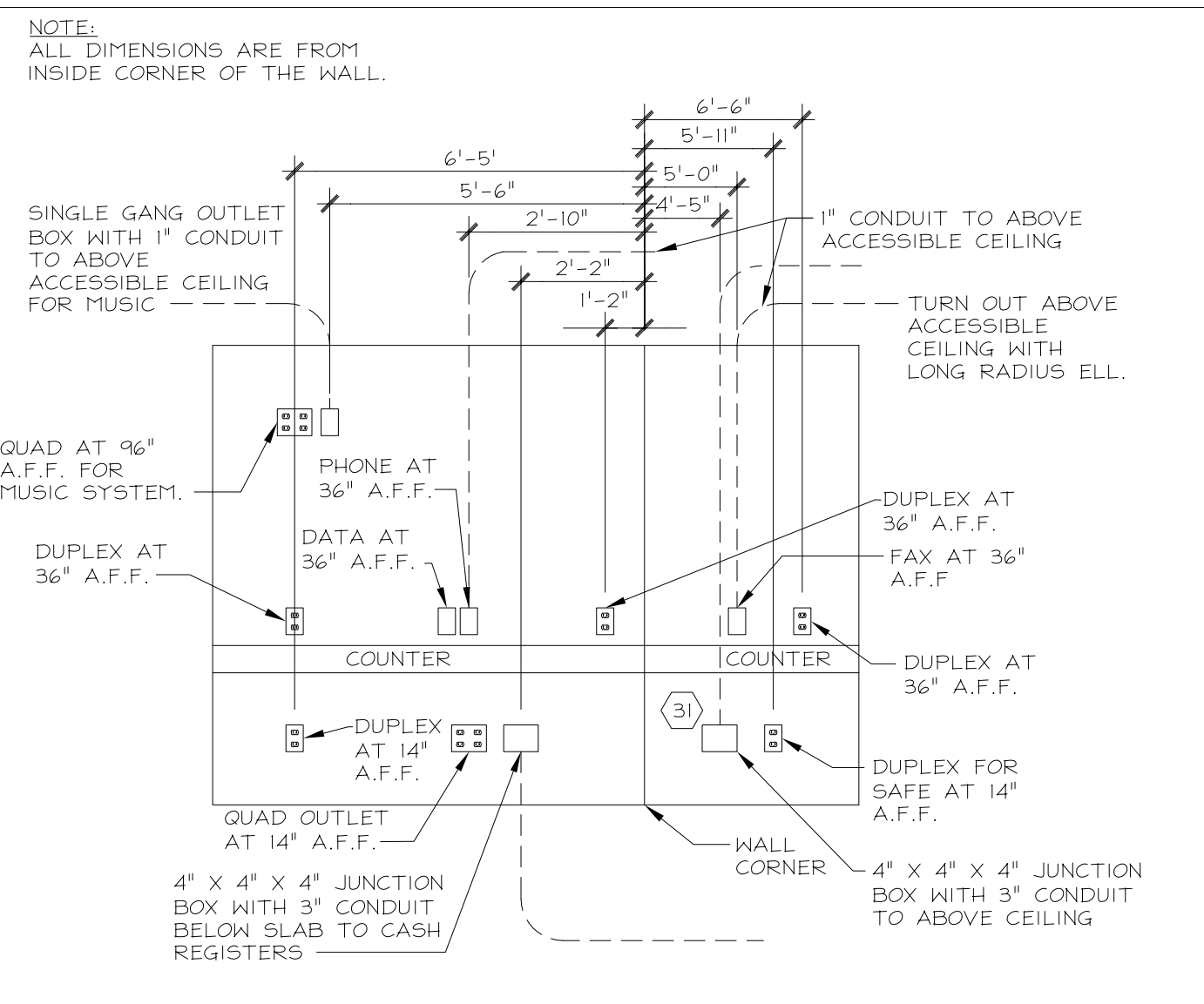
ELECTRICAL CONTRACTOR SHALL PROVIDE CONVENIENCE RECEPTACLES IN MEZZANINE AREA FOR SERVICE EQUIPMENT. CONNECT TO SPARE BREAKER IN PANEL "A".

CODED NOTES

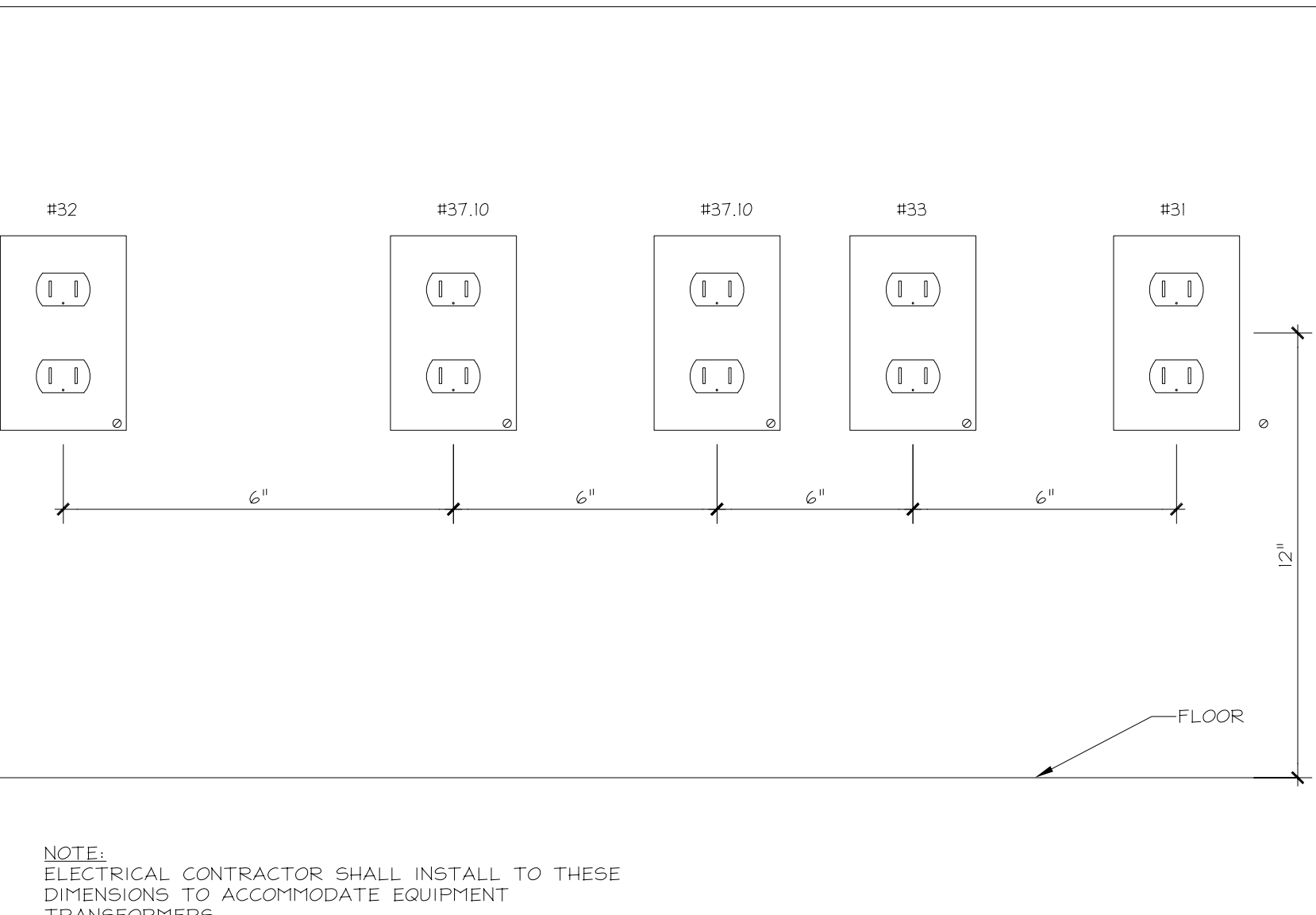
- EXHAUST FAN #3, 120V, 1PH, RUN 2 #12, 1 #12 GROUND IN 3/4" CONDUIT THROUGH MANUAL MOTOR STARTER AT UNIT. CIRCUIT AS INDICATED.
- NOT USED
- EXHAUST FAN #1, 2, 4 AND 5: 120V 1PH, RUN 2 #12, 1 #12 GROUND IN 3/4" CONDUIT THROUGH DISCONNECT SWITCH LOCATED AT UNIT (BY MANUFACTURER) TO A 20A-1P CIRCUIT BREAKER IN PANEL.
- AIR HANDLER UNIT ON MEZZANINE: 120V 1PH, RUN 1 #12, 1 #12 GROUND IN 3/4" CONDUIT THROUGH DISCONNECT SWITCH LOCATED AT UNIT TO A 20A-1P HACR CIRCUIT BREAKER IN PANEL "A".
- ELECTRICAL CONTRACTOR SHALL PROVIDE DISCONNECT.
- ELECTRICAL CONTRACTOR TO PROVIDE AND INSTALL INTERLOCK FOR EF-1 TO SHUT OFF WHEN DOORS OF CONVECTION OVEN ARE OPEN.
- INSTALL RECEPTACLE IN CEILING FOR MONITOR COVER PLATE AND RECEPTACLE COLOR TO MATCH CEILING.
- USE #10 AWG CONDUCTORS FOR RECEPTACLES
- ELECTRICAL CONTRACTOR SHALL FURNISH AND INSTALL A 20A ISOLATED GROUND RECEPTACLE AND SEPARATE JUNCTION BOX FOR FUTURE MEDIA CABINET. VERIFY EXACT LOCATION IN FIELD. MOUNTING HEIGHT APPROXIMATELY 9" BELOW CEILING. REFER TO DETAIL 1, SHEET E1.
- ELECTRICAL CONTRACTOR SHALL FURNISH AND INSTALL (1) 60A DISCONNECT SWITCH. MOUNT ON WALL ADJACENT TO DISHWASHER, FIELD COORDINATE.
- CONNECT A 120 VOLT CIRCUIT FROM PANEL "A" TO JUNCTION BOX. INSTALL LIGHT FIXTURE AND CONNECT FROM JUNCTION BOX TO LIGHT FIXTURE WITH LIQUIDTIGHT FLEXIBLE CONDUIT. CONNECT DOOR VENT JUNCTION BOX TO SAME CIRCUIT USING LIQUIDTIGHT FLEXIBLE CONDUIT.
- OVERRIDE SWITCH FOR BUILDING LIGHTS DIRECTIONAL SIGNS, EXTERIOR LIGHTS, AND EXTERIOR MENU BOARD.
- ELECTRICAL CONTRACTOR TO PROVIDE FLOATING JUNCTION BOX IN CEILING SPACE. COORDINATE EXACT LOCATION PRIOR TO ROUGH-IN.
- COOLER CONDENSING UNIT: 208V 3PH, RUN 4 #12, 1 #12 GROUND IN 3/4" CONDUIT FROM NON-FUSED DISCONNECT SWITCH ON UNIT TO A CIRCUIT BREAKER IN PANEL "C".
- FREEZER CONDENSING UNIT: 208V 3PH, RUN 3 #10, 1 #10 GROUND IN 3/4" CONDUIT FROM NON-FUSED DISCONNECT SWITCH ON UNIT TO A CIRCUIT BREAKER IN PANEL "C".
- RECEPTACLE IS TO BE MOUNTED IN THE CEILING, COVER PLATE AND RECEPTACLE COLOR TO MATCH CEILING.
- DUCT MOUNTED SMOKE DETECTOR IN RETURN PLENUM AT UNIT FURNISHED INSTALLED IN UNIT BY MANUFACTURER. REMOTE TEST STATION PROVIDED LOOSE FOR INSTALLATION BY ELECTRICAL CONTRACTOR IN A LOCATION ACCEPTABLE TO THE AUTHORITY HAVING JURISDICTION. PROVIDE 24V TRANSFORMER, CONNECT TO NEARBY RECEPTACLE CIRCUIT WIRE ROOFTOP UNIT CONTROL CIRCUIT THROUGH AUXILIARY CONTACTS IN SMOKE DETECTOR, MAKE ALL FINAL CONNECTIONS.
- INSTALL DUPLEX RECEPTACLE, 4" X 4" J-BOX FOR DATA AND SINGLE GANG OUTLET BOX FOR ELECTRIC AT 72" A.F.F. FOR MONITOR.
- PROVIDE JUNCTION BOX FOR HEAT TRACE. COORDINATE WITH PLUMBING CONTRACTOR PRIOR TO ROUGH-IN. CONNECT HEAT TRACE TO EVAPORATOR POWER USING LIQUIDTIGHT FLEXIBLE CONDUIT.
- REMOTE ANNUNCIATOR FOR RTU DUCT SMOKE DETECTOR FURNISHED WITH UNIT. INSTALLED BY ELECTRICAL CONTRACTOR. COORDINATE LOCATION WITH AUTHORITY HAVING JURISDICTION.
- BUMP-OUT WINDOW: 120V 1PH, RUN 2 #12, 1 #12 GROUND IN 3/4" CONDUIT FROM JUNCTION BOX AT 25 7/8" A.F.F. TO CIRCUIT BREAKER IN PANEL "A". COORDINATE EXACT LOCATION OF ROUGH-IN WITH MANUFACTURER PRIOR TO ROUGH-IN. MAKE ALL REQUIRED CONNECTIONS.
- PROVIDE ONE (1) 1" CONDUIT BACK TO PANELS FOR EQUIPMENT 27.3 AND 37.10. RUN CONDUIT UNDER SLAB, SCHEDULE 40 PVC, RIGID CONDUIT FOR ELBOWS. PROVIDE ONE (1) 8" X 8" X 6" JUNCTION BOX MOUNTED BELOW COUNTER.
- PROVIDE ONE (1) 1" CONDUIT BACK TO PANELS FOR EQUIPMENT 28, 66.3, 68.1, AND 69.3. RUN CONDUIT UNDER SLAB, SCHEDULE 40 PVC, RIGID CONDUIT FOR ELBOWS. PROVIDE ONE (1) 8" X 8" X 6" JUNCTION BOX MOUNTED BELOW COUNTER.
- PROVIDE ONE (1) 1" CONDUIT BACK TO PANELS FOR EQUIPMENT 58.9. RUN CONDUIT UNDER SLAB, SCHEDULE 40 PVC, RIGID CONDUIT FOR ELBOWS. PROVIDE A HORIZONTALLY MOUNTED OUTLET BOX AT 4" OVERALL HEIGHT ABOVE FLOOR AT LOCATION INDICATED WITH DUPLEX OUTLET FOR EQUIPMENT.
- PROVIDE ONE (1) 1" CONDUIT BACK TO PANELS FOR EQUIPMENT 68.1 (2). RUN CONDUIT UNDER SLAB, SCHEDULE 40 PVC, RIGID CONDUIT FOR ELBOWS. PROVIDE ONE (1) 8" X 8" X 6" JUNCTION BOX MOUNTED BELOW COUNTER.
- PROVIDE ONE (1) 1" CONDUIT BACK TO PANELS FOR EQUIPMENT 28, 81.3 AND 87. RUN CONDUIT UNDER SLAB, SCHEDULE 40 PVC, RIGID CONDUIT FOR ELBOWS. PROVIDE ONE (1) 8" X 8" X 6" JUNCTION BOX MOUNTED BELOW COUNTER.
- ELECTRICAL CONTRACTOR TO PROVIDE AND INSTALL AN INTERLOCK FOR EF-4 TO RUN WHEN DISH WASHER IS OPERATING.
- ELECTRICAL CONTRACTOR SHALL WIRE REMOTE MOUNTED CONDENSER FOR THIS ITEM LOCATED ON ROOF.
- CONDENSING UNIT OUTSIDE: 208V 3PH, RUN 3 #10, 1 #10 GROUND IN 1" CONDUIT THROUGH DISCONNECT SWITCH LOCATED AT EXTERIOR BUILDING WALL TO A 35A-3P HACR CIRCUIT BREAKER IN PANEL "D".
- PROVIDE JUNCTION BOX AT 14" A.F.F. WITH 3" CONDUIT TO ABOVE ACCESSIBLE CEILING.
- SEE ELEVATION-OUTLETS FOR OFFICE, DETAIL 3 ON THIS SHEET, FOR ADDITIONAL INFORMATION.
- PROVIDE ONE (1) 1" CONDUIT BACK TO SWITCHBOARD "DB1" FOR EQUIPMENT 77.5. RUN CONDUIT UNDER SLAB, SCHEDULE 40 PVC, RIGID CONDUIT FOR ELBOWS. PROVIDE ONE (1) 8" X 8" X 6" JUNCTION BOX MOUNTED BELOW COUNTER.
- ELECTRICAL CONTRACTOR TO PROVIDE NEMA L6-30R THIST LOCK RECEPTACLE AND PLUG-CORD. COORDINATE EXACT LOCATION WITH KITCHEN SUPPLIER PRIOR TO ROUGH-IN.



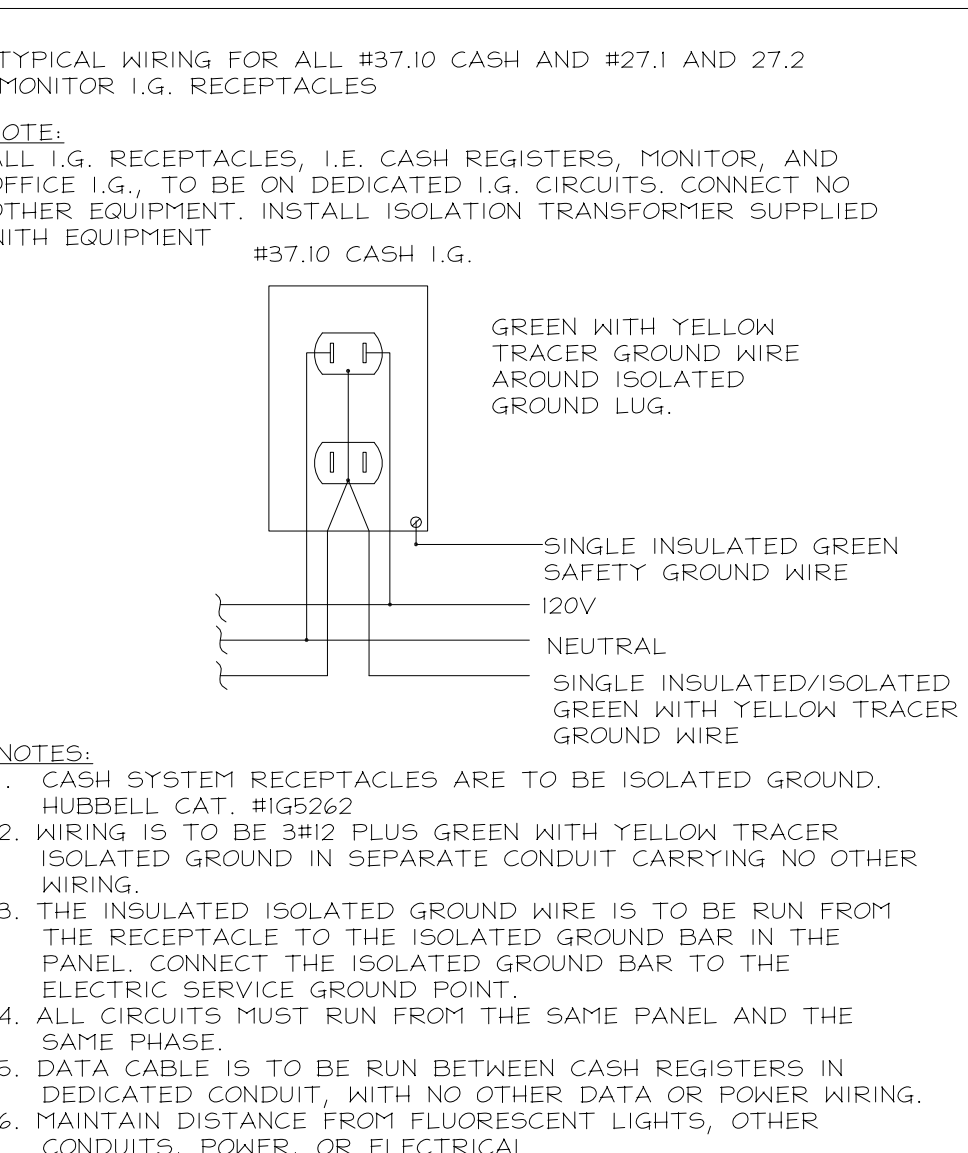
POWER PLAN
1/4"=1'-0"



3 ELEVATION-OUTLETS FOR OFFICE
E2 NTS



2 ELEVATION-OUTLETS AT DRIVE-THRU
E2 NTS



1 ISOLATED GROUND DETAIL
E2 NTS

REVISIONS:

DATE ISSUED: 07-02-2008

Atlanta
Boston
Chicago
Dallas
Los Angeles
Miami
Sacramento



7007 Discovery Blvd
Dublin, OH 43017
614.884.7777 F
wipartners.com

Tim Hortons
1408 CONGRESS STREET
PORTLAND, ME 04102

POWER PLAN

SAI # 0818
DRAWING NUMBER: E2

DRAWN BY: CG CHECKED BY: JD