

GENERAL NOTES

1. SEALANT AROUND HOLLOW METAL DOOR FRAMES. COLOR TO MATCH MORTAR.
2. SEALANT BETWEEN WINDOW FRAMES AND BRICK VENEER TO BE LIGHT BRONZE.
3. NOTE: THESE ELEVATIONS INDICATE ONLY THE DEMOLITION REQUIRED OR COMPLETION OF THIS REMODEL. EXISTING CONDITIONS NOT SHOWN OR NOTED SHALL REMAIN UNCHANGED. TRANSITIONS BETWEEN NEW AND EXISTING CONSTRUCTION SHALL BE SMOOTH, LEVEL AND UNNOTICEABLE.

EXTERIOR ELEVATION CODED NOTES

1. 42" ILLUMINATED SIGN. INDIVIDUAL LETTERS CENTERED ON CANOPY. G.C. TO CONFIRM WITH TDL GROUP THE SIGNAGE PACKAGE AND LOCATION.
2. 6" DIA. CONCRETE FILLED STEEL BOLLARD W/PANLING BOL-49 PLASTIC BOLLARD COVER.
3. QUICK-SERVE MODEL PN-54E-TH AUTOMATIC BIPARTING DRIVE THRU WINDOW FURNISHED BY TDL AND INSTALLED BY G.C.. VERIFY MANUFACTURER & DELIVERY W/ TDL REPRESENTATIVE.
4. HOLLOW METAL DOOR & FRAME. SEE DOOR AND WINDOW SCHEDULE FOR ADDITIONAL INFORMATION. PAINT TO MATCH FIELD BRICK.
5. NEW EXTERIOR LIGHTING SEE ELECTRICAL DRAWINGS FOR ADDITIONAL INFORMATION.
6. NEW 25 YR ASPHALT SHINGLES OVER 15# FELT, GC TO VERIFY CONDITION OF SHEATHING PRIOR TO INSTALLING NEW SHINGLES.
7. NEW STOREFRONT ENTRY DOORS, SEE DOOR AND WINDOW SCHEDULE FOR ADDITIONAL INFORMATION.
8. NEW WINDOWS, SEE DOOR AND WINDOW SCHEDULE FOR ADDITIONAL INFORMATION.
9. NEW SHINGLES COPING.
10. REPAIR AND REPAINT EXISTING BRICK WALL TO MATCH COLOR XXX
11. REPAIR AND REPAINT EXISTING DOWNSPOUT TO MATCH COLOR XXX
12. REPAIR AND REPAINT EXISTING WOOD SIDING TO MATCH COLOR XXX
13. NEW BRICK INFILL, FINISH TO MATCH SURROUNDING BRICK.
14. ANODIZED ALUMINUM STOREFRONT W/ INSULATED GLAZING. SEE WINDOW SCHEDULE ON SHEET A11.
15. THESPA METEON PANEL. SEE MANUFACTURER SPECIFICATION FOR ADDITIONAL INFORMATION.
16. G.C. TO REPAIR AND REPLACE EXISTING WALL AS NEEDED.

SYMBOL LEGEND

- ELEVATION REFERENCE
- WALL SECTION REFERENCE
- NOTE REFERENCE. SEE EXTERIOR ELEVATION CODED NOTES
- WINDOW NUMBER. REFER TO SCHEDULES ON DRAWING A11.

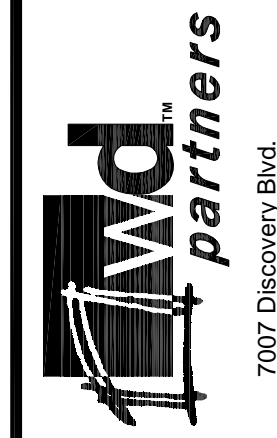
BRICK MASONRY AND MORTAR

1. THE CONTRACTOR WILL SUBMIT TO TIM HORTONS FOR APPROVAL A SAMPLE BOARD OF THE SPECIFIED
2. BRICK AND MORTAR AT LEAST 18" x 18" CURED AT LEAST 7 DAYS. BRICK AND MORTAR SCHEDULE: SEE SPECIFICATIONS SHEET SP3.
3. THE SPECIFICATIONS OF THE MORTAR COLORING MANUFACTURER ARE TO BE FOLLOWED.
4. ALL BRICK JOINTS ARE TO BE RAKED 1/4" DEEP W/ CONCAVE TOOL JOINT.
5. ALL BRICK MORTAR IS TO BE COLORED AS SPECIFIED AND AS PER SAMPLE APPROVED BOARD.
6. MASONRY WORK SHALL NOT PROCEED WITHOUT PRIOR APPROVAL OF TIM HORTON'S.
7. ANY BRICK MASONRY WHICH DOES NOT MATCH THE APPROVED SAMPLE WILL BE REPLACED AT THE CONTRACTOR'S EXPENSE.
8. THE CONTRACTOR SHALL BECOME FAMILIAR WITH AND FOLLOW ALL DRAWINGS AND SPECIFICATIONS.

REVISIONS:

DATE ISSUED: 07-02-2008
*INDICATES NO REVISION TO THIS SHEET

Atlanta
 Boston
 Chicago
 Dallas
 Los Angeles
 Miami
 Sacramento



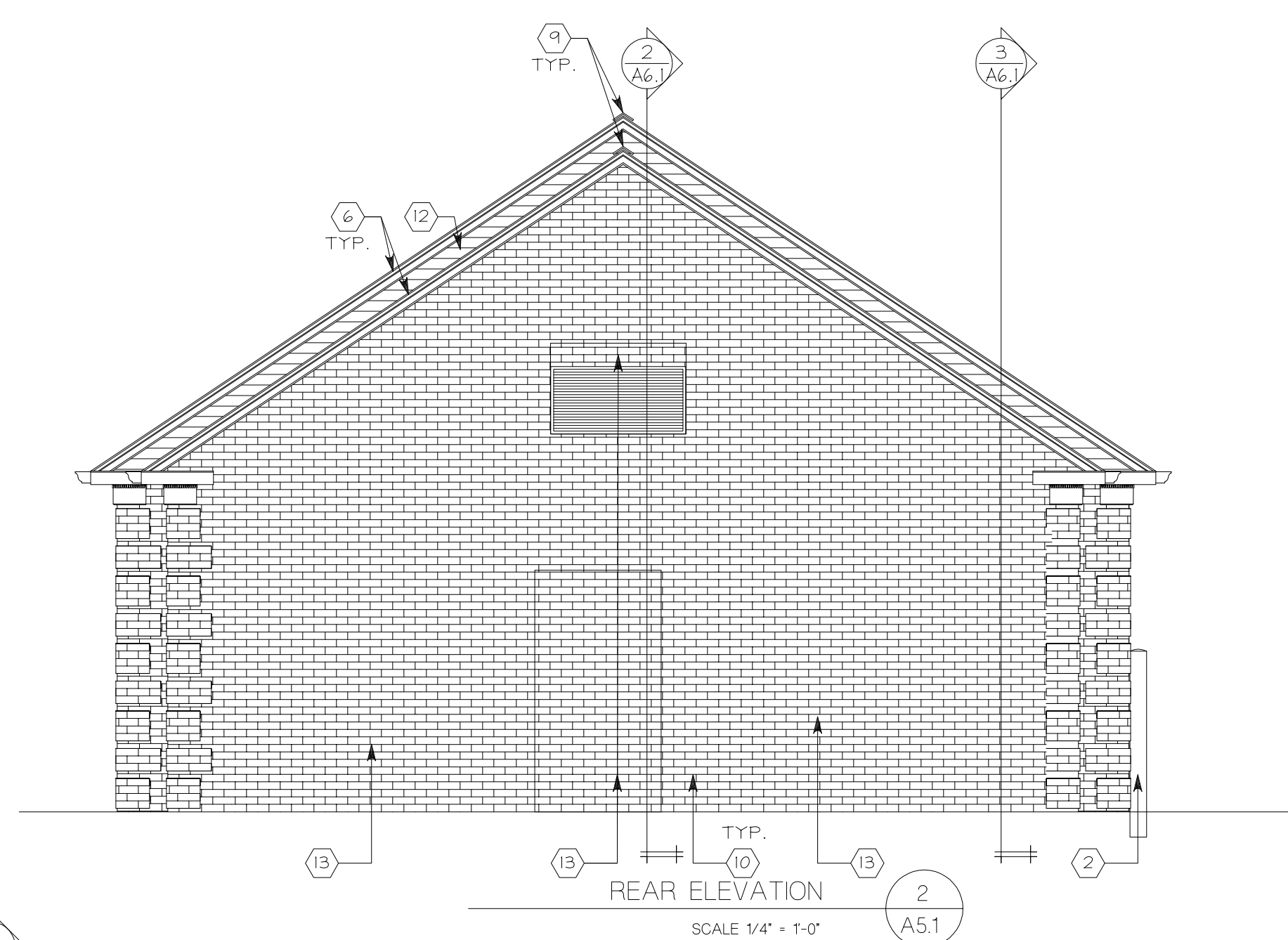
7007 Discovery Blvd
 Dublin, OH 43017
 614.834.7777
 614.834.7777 F
 wipartners.com

Tim Hortons
 1408 CONGRESS STREET
 PORTLAND, ME 04102

EXTERIOR ELEVATIONS

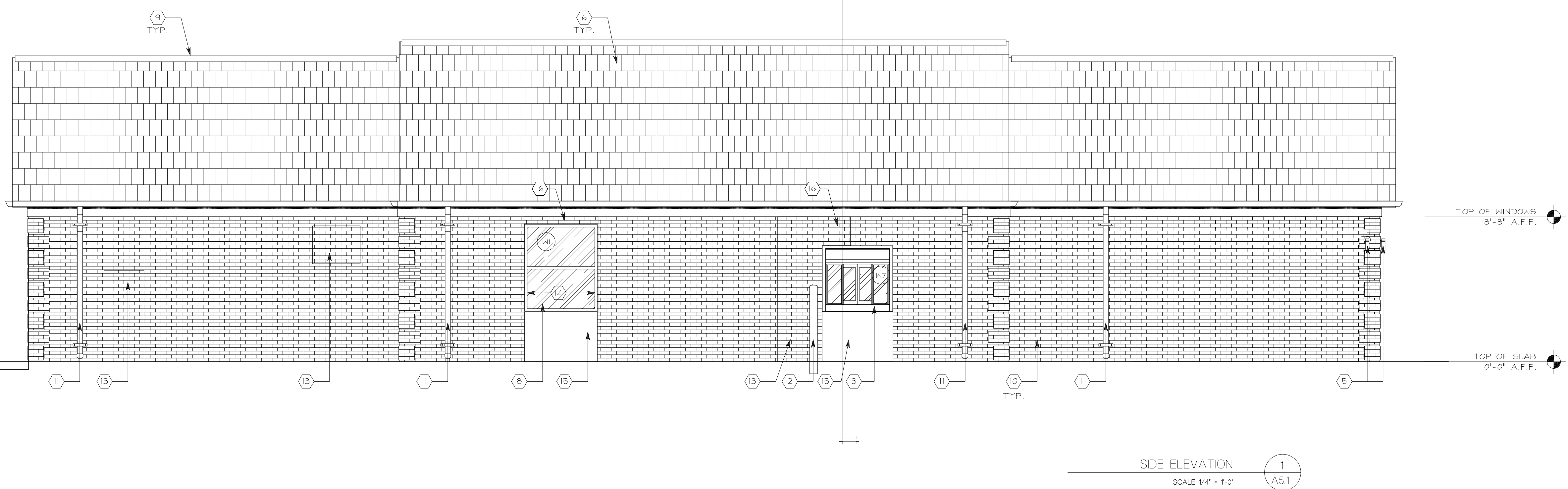
DRAWN BY: PJS CHECKED BY: JPY

SAI # 08138
 DRAWING NUMBER:
A5.1



TOP OF BRICK
 EXISTING LEVEL

TOP OF SLAB
 0'-0" A.F.F.



TOP OF WINDOWS
 8'-8" A.F.F.

TOP OF SLAB
 0'-0" A.F.F.

SIDE ELEVATION 1
 SCALE 1/4" = 1'-0"
 A5.1