

DOOR, FRAME AND HARDWARE SCHEDULE

DOOR					FRAME			SET NO.	REMARKS
NO.	SIZE	TYPE	MATERIAL	FINISH	TYPE	MATERIAL	FINISH		
100A	2'-11 1/2" x 7'-0" x 1 3/4"	D2	AL	MFG.	F1	AL	MFG.	6A	HARDWARE SET BY STOREFRONT COMPANY. G.C. TO PROVIDE 4 INSTALL.
100B	2'-11 1/2" x 7'-0" x 1 3/4"	D2	AL	MFG.	F1	AL	MFG.	6B	HARDWARE SET BY STOREFRONT COMPANY.
101A	2'-11 1/2" x 7'-0" x 1 3/4"	D4	AL	MFG.	F1	AL	MFG.	5A	HARDWARE SET BY STOREFRONT COMPANY. G.C. TO PROVIDE 4 INSTALL.
101B	2'-11 1/2" x 7'-0" x 1 3/4"	D4	AL	MFG.	F1	AL	MFG.	5B	HARDWARE SET BY STOREFRONT COMPANY.
105	SPECIAL DOOR BY SFC	D5	----	----	-	----	----	-	3'-0" FRAMED ROUGH OPENING
106	3'-0" x 6'-8" x 1 3/4"	D1	P.LAM	◇	F3	ALUM	◇	4	MALE SIGNAGE BY TD UNDERCUT 5/8"
108	3'-0" x 6'-8" x 1 3/4"	D1	P.LAM	◇	F3	ALUM	◇	4	FEMALE SIGNAGE BY TD UNDERCUT 5/8"
109	3'-0" x 7'-0" x 1 3/4"	D3	H.M.	PAINT	F1	H1	PAINT	1	VIEWING WINDOW #5'-0" A.F.F. SECURITY STICKER BY T.D.L. TO READ "STOP DO NOT OPEN WITHOUT MANAGER'S PERMISSION OR AFTER DARK."
112	3'-0" x 7'-0" x 1 3/4"	D1	P.LAM	◇	F3	ALUM	◇	2	

HARDWARE SCHEDULE

HARDWARE SCHEDULE IS BASED ON THE FOLLOWING MANUFACTURERS:

HINGES: HAGER  
CONTINUOUS HINGE: SELECT PRODUCTS LTD.  
CYLINDERS, LATCHES, LOCKS: SCHLAGE  
EXIT DEVICES: VON DUPRIN  
CLOSERS: LCN  
STOPS, TRIM, BOLTS: ROCKWOOD  
SEALS/SWEEPS: DURABLE

NOTE: FINISH IS TO BE DULL CHROME, 636, OR MANUFACTURER'S SPRAYED EQUAL (CLOSERS). PUSH/PULLS, KICKS, STOPS, ARE TO BE STAINLESS STEEL, 630.

SET NO. 1

NOTE: VGLF KD 6' x 2', SECURITY WINDOW FRAME BY DOOR SUPPLIER.

DOOR NO. 109B  
2.0 HINGE  
1.0 CYLINDER  
1.0 STRIKE  
2.0 FLUSH BOLTS  
1.0 EXIT DEVICE  
1.0 CLOSER  
1.0 PULL PLATE  
1.0 THRESHOLD  
1.0 SWEEP (ACTIVE)  
1.0 SWEEP (INACTIVE)  
1.0 SEAL  
1.0 KICKPLATE (ACTIVE)  
1.0 KICKPLATE (INACTIVE)  
2.0 HINGE  
1.0 LATCH GAIRD

SET NO. 2

DOOR NO. 112  
3.0 HINGES  
1.0 LOCKSET  
1.0 STOP

SET NO. 4

DOOR NOS. 106, 108  
PER EACH LEAF  
3.0 HINGES  
1.0 CLOSER  
1.0 WALL STOP (DOOR 105)  
1.0 LOCKSET  
1.0 KICKPLATE  
1.0 FLOOR STOP

SET NO. 5A

DOOR NO. 101A  
ALL HARDWARE BY DOOR SUPPLIER  
(PIVOTS, PULL/PUSH BARS, FLOOR MTD. STOPS)  
STOREFRONT HARDWARE TO BE CLEAR ALUMINUM ANODIZED

SET NO. 5B

DOOR NO. 101B  
ALL HARDWARE BY DOOR SUPPLIER  
(PIVOTS, CLOSER, PULL/PUSH BARS, FLOOR MTD. STOPS)  
STOREFRONT HARDWARE TO BE CLEAR ALUMINUM ANODIZED

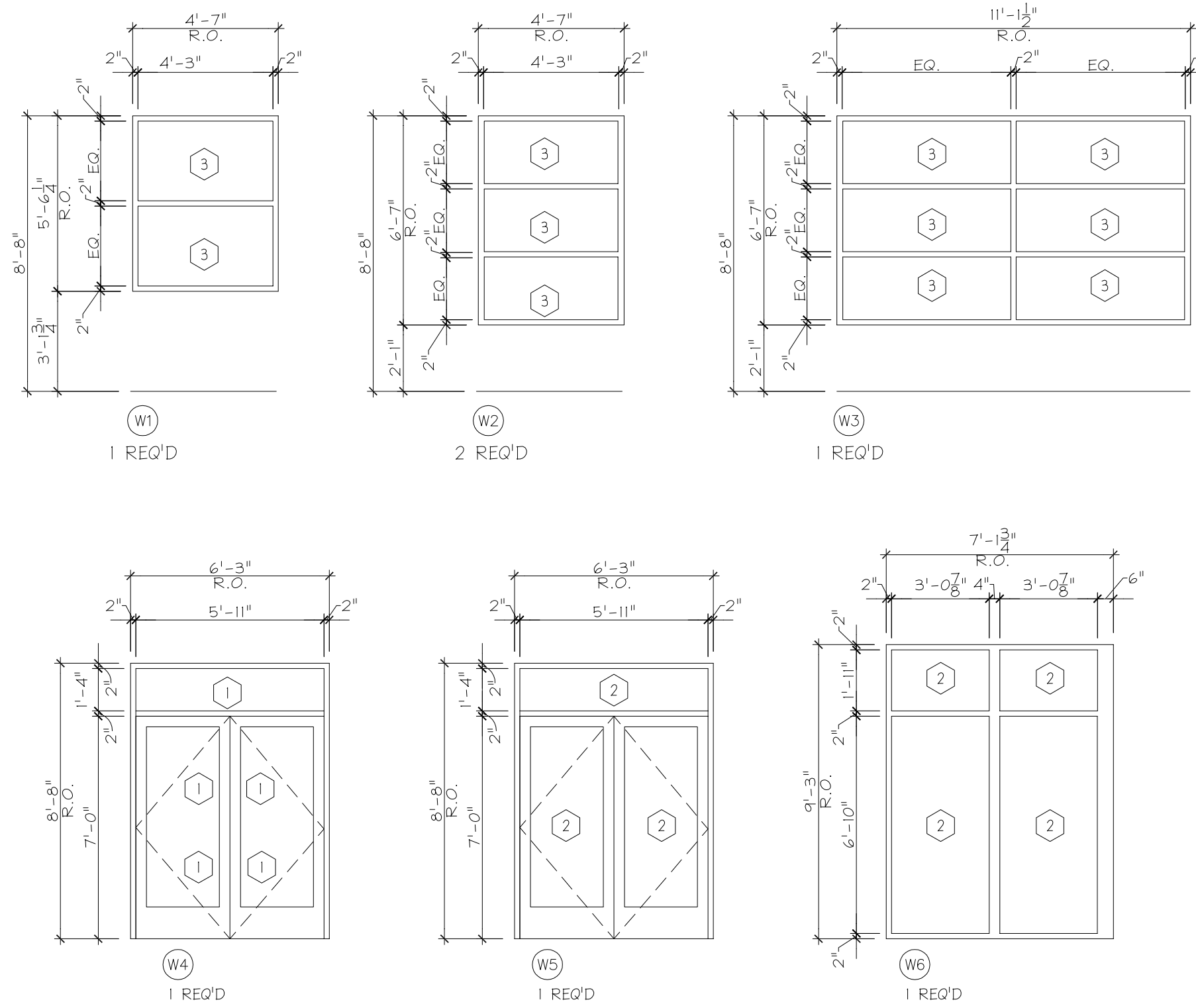
SET NO. 6A

DOOR NO. 100A  
ALL HARDWARE BY DOOR SUPPLIER  
(PIVOTS, MS DEADLOCK - CYLINDER M51850A, CONCEALED ROD PANIC HARDWARE CLOSER (LCN 4040), DOOR PULL, WEATHERSTRIPPING, SWEEP, FLOOR MTD. STOPS AND PUSH BAR).  
STOREFRONT HARDWARE TO BE CLEAR ALUMINUM ANODIZED

SET NO. 6B

DOOR NO. 100B  
ALL HARDWARE BY DOOR SUPPLIER  
(PIVOTS, MS DEADLOCK - CYLINDER M51850A, CONCEALED ROD PANIC HARDWARE CLOSER (LCN 4040), DOOR PULL, WEATHERSTRIPPING, SWEEP, FLOOR MTD. STOPS AND PUSH BAR).  
STOREFRONT HARDWARE TO BE CLEAR ALUMINUM ANODIZED

WINDOW SCHEDULE



ALL MATERIAL SHALL BE KAWNEER #14 CLEAR ANODIZED ALUMINUM AA-M1222A4 ARCHITECTURAL GLASS 1 (7 MILS MINIMUM). HARDWARE AND SEALANT SHALL BE A COLOR TO MATCH.

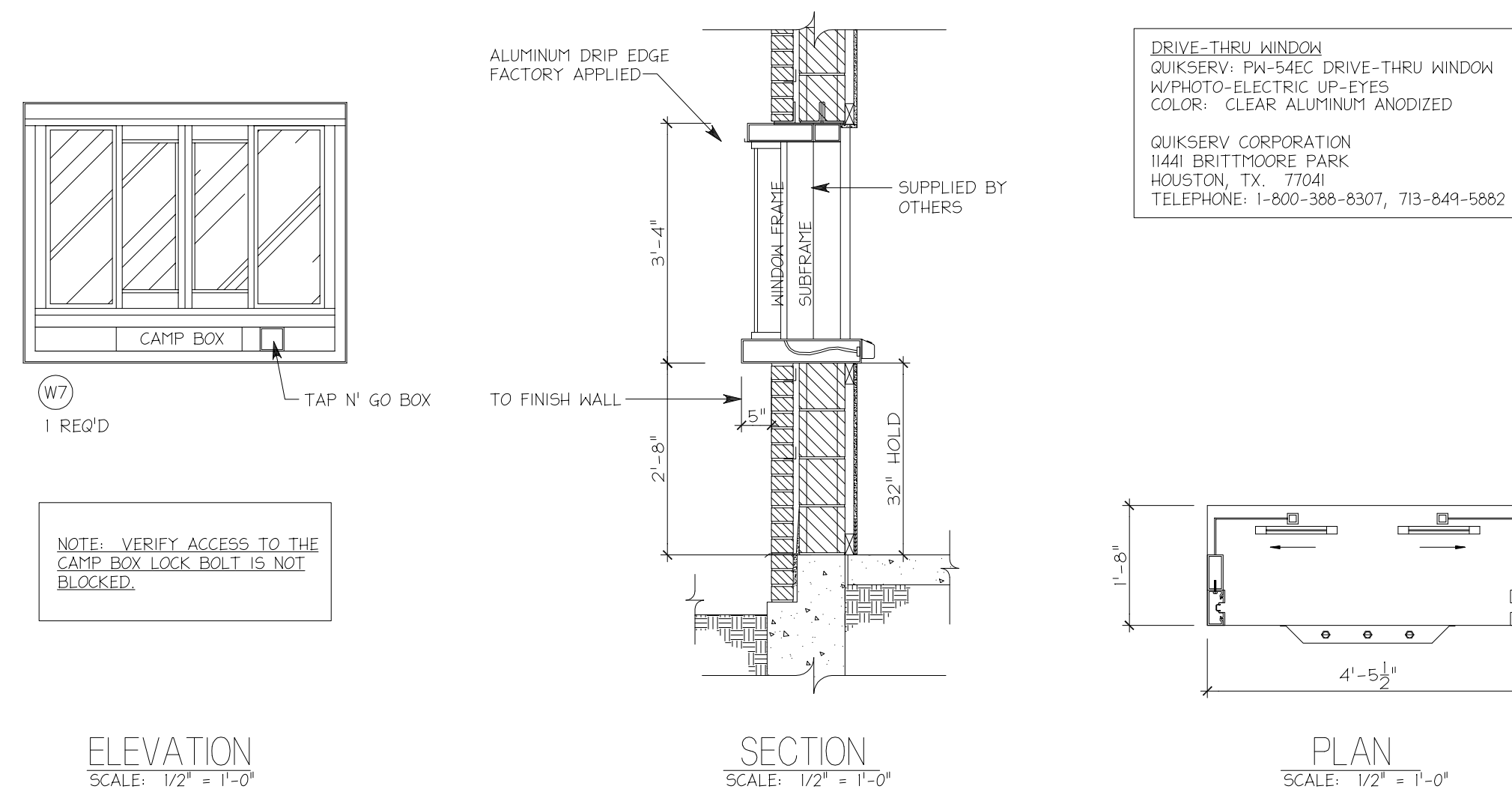
GLASS SCHEDULE

- 1 1" TEMPERED INSULATED GLAZING
- 2 1/4" CLEAR TEMPERED GLAZING
- 3 1" INSULATED GLAZING

GENERAL NOTES

1. ALL GLAZING IN HAZARDOUS LOCATIONS (AS DEFINED BY THE CODE SHALL MEET THE REQUIREMENTS OF CPSC 16 CFR, PART 1201)
2. FIELD MEASURE ALL OPENINGS
3. ALL GLAZING IN WINDOWS AND DOORS TO BE SAFETY HEAT TREATED.
4. REFER TO WINDOW DETAILS, BELOW

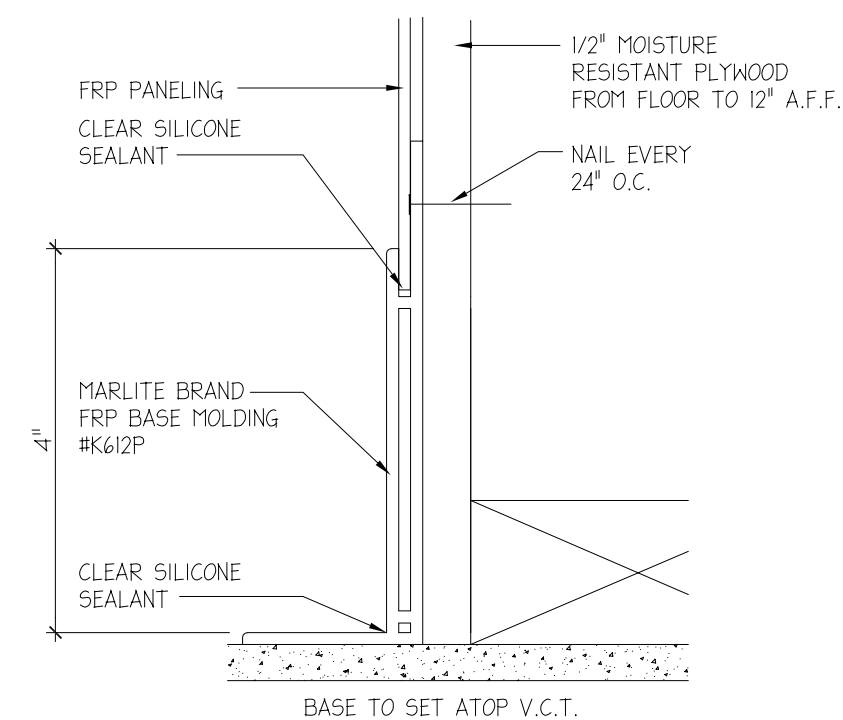
DRIVE-THRU WINDOW



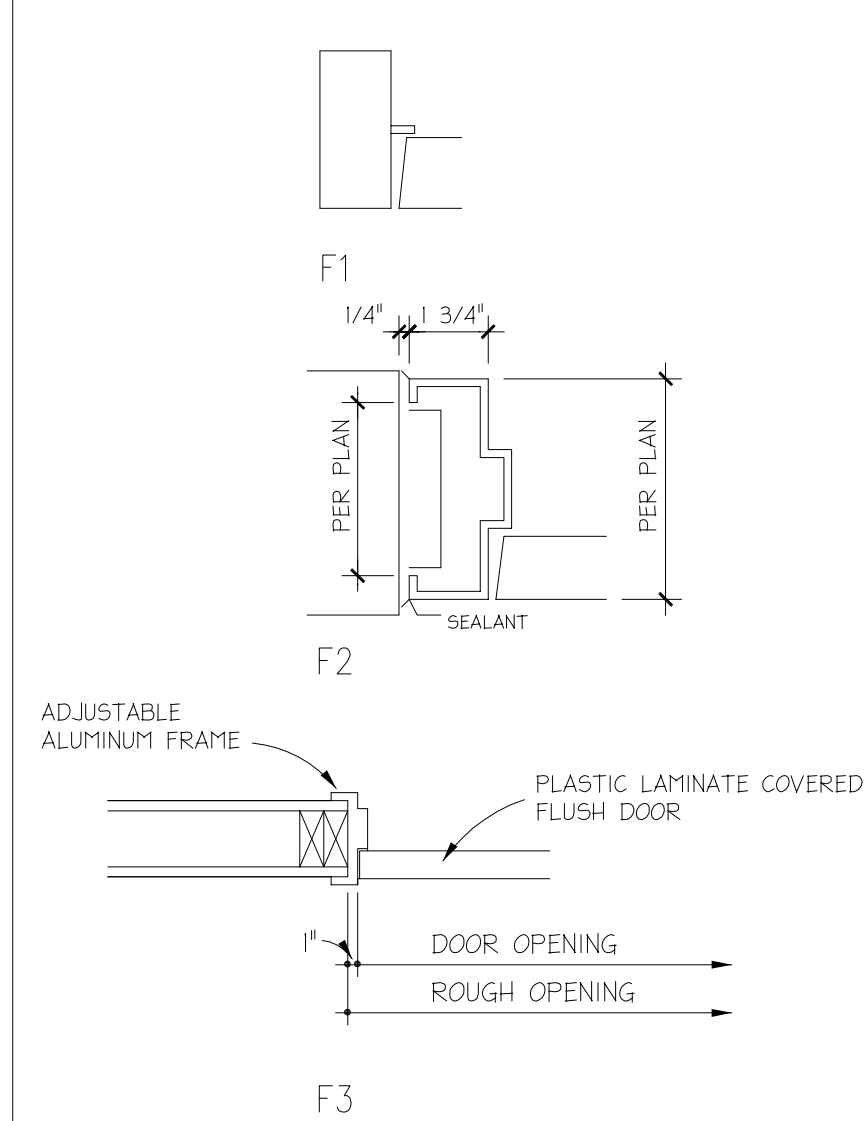
DRIVE-THRU WINDOW  
QUIKSERV: FW-54EC DRIVE-THRU WINDOW  
W/PHOTO-ELECTRIC UP-EYES  
COLOR: CLEAR ALUMINUM ANODIZED  
QUIKSERV CORPORATION  
11441 BRITTHOORE PARK  
HOUSTON, TX 77041  
TELEPHONE: 1-800-388-8307, 713-849-5882

TAP N' GO EXTERIOR ELEVATION NOTES  
TAP N' GO BOX AND BRACKET TO BE INSTALLED BY TD.  
1. READER TO BE MOUNTED IN LINE WITH THE WINDOW MULLION, AS INDICATED, ON THE EXIT SIDE OF THE DRIVE-THRU WINDOW.  
2. STAINLESS STEEL BRACKET TO BE SECURELY FASTENED TO ANGLED PANEL AT 3" BELOW THE UNDERSIDE OF THE DECK WITH NUTS AND BOLTS (SUPPLIED). BRACKET TO BE SET SO THE CARD READER IS PERPENDICULAR TO THE GROUND THEN TIGHTENED.  
3. CABLE ENTRY POINT INTO ANGLED PANEL IS TO BE SEALED WITH SILICONE.  
4. 5/8" HOLE CUT IN PANEL FRAME FOR CABLE INSTALLATION. HOLE TO BE FITTED WITH A BLACK GROMMET.

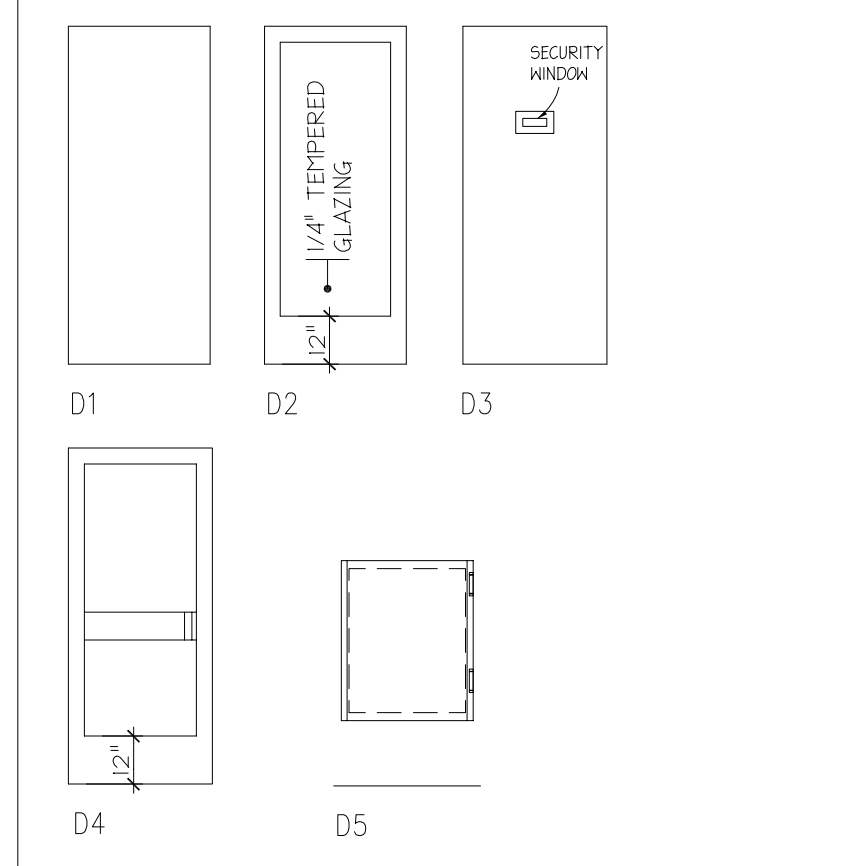
MARLITE BASE DETAIL



FRAME TYPES



DOOR TYPES



**Tim Hortons**  
1408 CONGRESS STREET  
PORTLAND, ME 04102

DOOR & WINDOW  
SCHEDULES

SAI # 08138  
DRAWING NUMBER:  
**A11**

REVISIONS:  
DATE ISSUED: 07-02-2008  
INDICATES REVISION TO THIS SHEET

Atlanta  
Boston  
Chicago  
Dallas  
Los Angeles  
Miami  
Sacramento

**WD partners**  
7007 Discovery Blvd  
Dublin, OH 43017  
614.834.4400  
614.834.7777 F  
wdpartners.com

DRAWN BY: DDS CHECKED BY: JPY