

POWER & POS LEGEND

POS	POINT OF SALES TERMINAL	⊠	SINGLE POLE SWITCH
VDU	VIDEO DISPLAY UNIT	⊙	NEMA RECEPTACLE WITH GFCI (GROUND FAULT CIRCUIT INTERRUPTER)
R	ROUTER	⊕	DUPLEX RECEPTACLE
SC	SITE CONTROL (SELF-MOUNTING) RADIANT ONLY	⊕	GROUND FAULT CIRCUIT INTERRUPTER RECEPTACLE
RP	RECEIPT PRINTER	⊕	ISOLATED GROUND RECEPTACLE
FP	PREP PRINTER	⊕	ISOLATED GROUND RECEPT FOR TV COORD MOUNTING HST W/ OWNER
FAX	FAX	⊕	COMBO POWER RECEPTACLE MOUNT @ 3'-2 1/2" AF
BOH FC	BACK-OFF-HOUSE PC	⊕	JUNCTION BOX
UPS	UPS	▲	TELEPHONE OUTLET, RJ45, BOX
M	MODEM	△	DATA OUTLET, RJ45
SW	SWITCH	⊕	VIDEO DISPLAY UNIT
OT	ORDER TAKER TERMINAL	□	PRINTER
DTC	DRIVE THROUGH CONSOLE	⊕	POINT OF SALE TERMINAL
DTT	DRIVE THROUGH TIMER	⊕	SCANNER
J-BOX @ CEILING	PROVIDE CONDUIT DOWN TO POS J-BOX @ 42" AF UNO	◇	POS EQUIPMENT TAG

POS-COMMUNICATIONS EQUIPMENT SCHEDULE POS EQUIP & WIRING BY OTHERS

QTY	DESCRIPTION	LOCATION	VOLTS	LOAD AMPS	CB	TRANS FORMER	LO/VO TERM	MTS HST	REMARKS		
1	4	POINT OF SALES TERMINAL (POS)	(2) FRONT COUNTERS (1) D/T POS (1) D/T OT	100-120V	2.0	20A/1P	NO	RJ45	18"AF	SHARES CIRCUIT WITH POS ITEMS 2 & 12	
2	3	RECEIPT PRINTER	(2) FRONT COUNTERS (1) D/T POS	100-240V	2.0	20A/1P	YES	RJ45	18"AF	SHARE CIRCUIT WITH POS ITEMS 1 & 12	
3	2	PREP PRINTER	(1) ESPRESSO (1) SANDWICH	240V	1.2	20A/1P	YES	RJ45	**	**MTD @ 38"AF @ SANDWICH STATION **MTD @ 38"AF @ ESPRESSO	
4	3	VDU	(1) FRONT COFFEE (1) D/T COFFEE (1) SANDWICH	100-240V	1.5	20A/1P	NO	N/A	**	SHARES CIRCUIT	
5	3	VDU CONTROLLER (PC BASED)		100-120V	1.0	20A/1P	YES	RJ45	**	**MTD @ 18"AF @ D/T COFFEE, 18"AF @ SANDWICH STA, & 38" AF @ FRONT COFFEE	
6	1	POS NETWORK HUB/ SWITCH	POS COFFEE FRONT CHASE	100-120V	0.5	20A/1P	YES	RJ45	18"AF	SHARES CIRCUIT WITH POS ITEMS 1, 2 & 12	
7	1	PC SITE CONTROLLER	OFFICE	100-120V	4.0	20A/1P	NO	RJ45	SEE 5/EI		
8	1	FRINTER/FAX/COPIER (BOH)	OFFICE	100-120V	8.2	20A/1P	NO	N/A	SEE 5/EI		
9	3	SCANNER	(2) FRONT COUNTERS (1) D/T POS					NO	RJ45	18"AF	CONNECTED TO POS UNITS
10	1	PRICE CONFIRMATION DISPLAY	MOUNT OUTSIDE @ D/T WINDOW					NO	RJ45	**	CONNECTED TO D/T POS UNIT **MTD @ 38 1/2" ABOVE D/T COUNTER
12	3	CASH DRAWER	UNDER CTR @ FRONT & ADV CTR @ D/T	N/A	N/A			NO	RJ45	18"AF	SHARES CIRCUIT WITH POS ITEMS 1 & 2
OTHER COMMUNICATION DEVICES											
15	1	DRIVE THROUGH (DT) TIMER CONSOLE	OFFICE	120V	N/A			NO	RS232	48" CTR	MUST BE WITHIN 60FT OF DISPLAY
16	1	DT REMOTE DISPLAY	NEAR DT, VISIBLE TO ENTIRE SERVICE AREA	LOW VOLT	N/A			NO			
PHONE & DATA LINES											
18	0	SPARE	OFFICE	LOW VOLT	N/A			N/A	RJ45		
19A	0	SPARE	OFFICE	LOW VOLT	N/A			N/A	RJ45		
20	1	FAX LINE	OFFICE	LOW VOLT	N/A			N/A	RJ45	SEE 5/EI	FAX LINE FOR OFFICE
21	1	PHONE LINE	OFFICE	LOW VOLT	N/A			N/A	RJ45		PHONE LINE FOR OFFICE
22	0	NOT USED									
23	1	HIGH SPEED INTERNET LINE (MNS)	OFFICE	LOW VOLT	N/A			N/A	RJ45	SEE 5/EI	FOR SITE CONTROLLER & BOH PC
24	1	MARCH SYSTEM SECURITY	SECURITY SYSTEM	LOW VOLT	N/A			N/A	RJ45	SEE 5/EI	PLUGS INTO ROUTER PORT#2
25	3	DIGITAL MENU BOARD	OFFICE/SERVICE AREA	LOW VOLT	N/A			N/A	RJ45	SEE 5/EI	PLUGS INTO ROUTER PORT#4
26	1	WiFi	OFFICE	LOW VOLT	N/A			N/A	RJ45	SEE 5/EI	PLUGS INTO ROUTER PORT#5

POWER SCHEDULE

ITEM	DESCRIPTION	VOLTS	AMPS	CB	PHASE/WIRES	CORD PLUG	RECEPTACLE	MTS HST	REMARKS
10.BB	BAKERY DISPLAY RACK	120V			10 2W+G		5-15R	18"AF	VERIFY ALL ELEC REGTS W/ MANUF
46	ESPRESSO MACHINE	208V	25.0	30A/2P	10 2W+G	YES	L6-30R	38"AF	UNIT HAS GOND & PLUS ATTACHED - PROVIDE 30A 250V RECEPTACLE - VERIFY WITH MANUF
101C-1	DAIRY DISPENSER	120V	2.2	15A/1P	10 2W+G	YES	5-15R	**	**38" @ FRONT COUNTER, 46" @ D/T COUNTER
101D	SUGAR DISPENSER	120V	2.0	15A/1P	10 2W+G	YES	5-15R	**	**38" @ FRONT COUNTER, 46" @ D/T COUNTER
101PP-3	SINGLE COFFEE BREWER	120V	16.7	20A/2P	10 3W+G	YES	L14-20R	**	**38" @ FRONT COUNTER, 46" @ D/T COUNTER
101P-3	TWIN COFFEE BREWER	120/208	30.4	30A/2P	10 3W+G	YES	5-15R	**	**38" @ FRONT COUNTER, 46" @ D/T COUNTER
101G-3	COFFEE GRINDER	120V	11.0	15A/1P	10 2W+G	YES	5-15R	**	
102A-1	HOT WINTER BEVERAGE DISP	120/240	21.7	30A/2P	10 3W+G	YES	46"AF		VERIFY ALL ELEC REGTS W/ MANUF
110	COOLATTA MACHINE - LEFT	208/230	14.0	25A/2P	10 3W+G	YES	L6-20R	18"AF	
110	COOLATTA MACHINE - RIGHT	208/230	14.0	20A/2P	10 3W+G	YES	L6-20R	18"AF	
120F	UNDERCOUNTER REFRIGERATOR	115V	7.0	15A/1P	10 2W+G	YES	5-15R	18"AF	
200A	ICED COFFEE BREWER	120/208	19.5	30A/2P	10 3W+G	YES	L14-30R	46"AF	
210C-1	BASEL TOASTER	208V	15.8	20A/2P	10 2W+G	YES	5-15R		
212	REFRIGERATED SANDWICH UNIT	120V	12.0	20A/1P	10 2W+G	YES	5-15R		
212A	HOLDING CABINET	120V	10.0	20A/1P	10 2W+G	YES	5-15R		
215	TORNADO OVEN	208V	28.4	20A/2P	10 2W+G	YES	6-30R		
216	MULTI STAGING WARMER	120V	5.1	20A/1P	10 2W+G	YES	5-15R		
412	ICE MACHINE	208/230	18.2	20A/1P	10 2W+G	YES	5-15R		
538-2	GAS-FIRED RACK OVEN	120V		15A/1P			60"AF		MUST BE HARD WIRED IN FIELD
563	POWER BASE	120V					18"AF		VERIFY ALL ELEC REGTS W/ MANUF
584	REACH-IN REF/FREEZER COMBO	115V	14	20A/1P	10 2W+G	YES	5-20R	18"AF	VERIFY ALL ELEC REGTS W/ MANUF
BP	BOOSTER PUMP								VERIFY ALL ELEC REGTS W/ MANUF
DMB-1	DIGITAL MENU BOARD						SEE 6/EI		VERIFY ALL ELEC REGTS W/ MANUF
EF-1	EXHAUST FAN - 1F REG'D								VERIFY ALL ELEC REGTS W/ MANUF
EF-2	EXHAUST FAN - 1F REG'D								VERIFY ALL ELEC REGTS W/ MANUF
HD	HAND DRYER - SEE A2.1						46"AF		MULT ELEC CONFIGS AVAIL - SPECIFY
HTR	AIR CURTAIN / HEATER	208V	29/36	40A/2P	3P				VERIFY ALL ELEC REGTS W/ MANUF
WFS	WATER FILTRATION SYSTEM								VERIFY ALL ELEC REGTS W/ MANUF

1) MODIFY EXISTING ELECTRICAL PANELS TO ACCOMMODATE EQUIPMENT CIRCUITS AS REGD.
2) THE ELECTRICAL CONTRACTOR IS REQUIRED TO VERIFY ALL ELECTRICAL REQUIREMENTS OF EQUIPMENT, WHETHER NEW OR EXISTING REUSED.

FIRE ALARM LEGEND

F	REINSTALLED EXISTING MANUAL FULL STATION
F	ETR MANUAL FULL STATION
F	REINSTALLED EXISTING FIRE ALARM HORN/STROBE UNIT
F	ETR HORN/STROBE UNIT
F	REINSTALLED EXISTING FIRE ALARM STROBE UNIT ONLY
F	ETR STROBE UNIT ONLY
ANNUN	REINSTALLED EXISTING ANNUNCIATOR

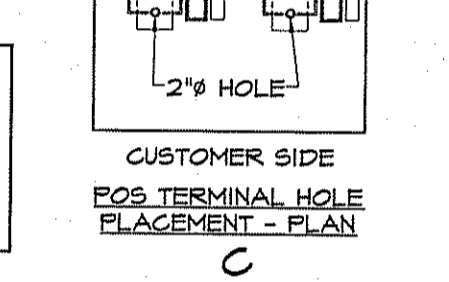
CONDUIT NOTES:

- DMB, PROVIDE (6) CAT 5 WIRE PULLS FROM (2) QUAD DATA OUTLETS IN MENU BOARD SOFFIT TO (2) QUAD DATA OUTLETS IN OFFICE WALL.
- 2 CONDUITS MIN SHALL BE USED BETWEEN OFFICE & OTHER PARTS OF THE STORE
- 1 CONDUIT FOR POS WIRING ONLY
- 1 CONDUIT FOR NON-POS ITEMS

FIRE ALARM SYSTEM NOTES

- 1) ANY NEW DEVICES SHALL BE COMPATIBLE WITH EXIST SYSTEM
- 2) VERIFY ALL EQUIPMENT MEETS ADA
- 3) VERIFY & MAINTAIN PROPER FUNCTION OF EQUIPMENT DURING CONSTRUCTION AND AT FINAL COMPLETION
- 4) MODIFY EXIST FA SYSTEM AS REGD TO ACCOMMODATE NEW LAYOUT

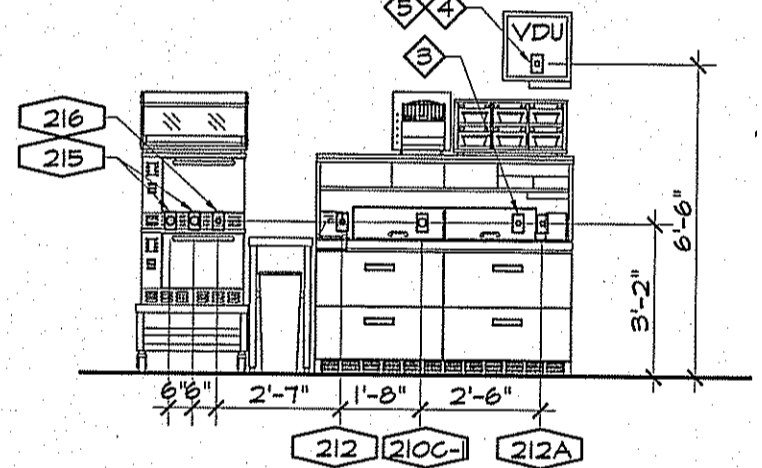
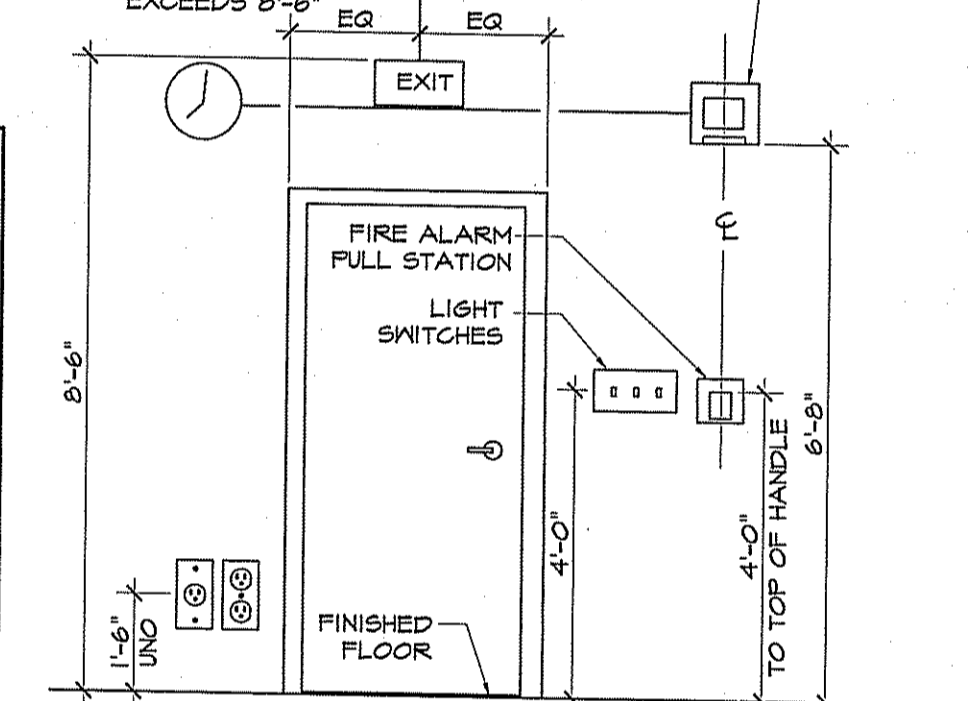
SERVICE SIDE



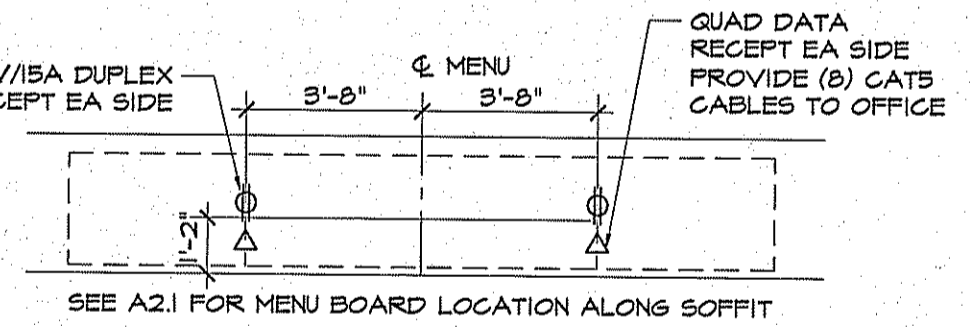
MTS HST DTL NOTES

- 1) THIS DETAIL INDICATES CENTERLINE FOR FIRE ALARM/FULL STATION SWITCHES AND RECEPTACLES. HOWEVER, THIS SAME CENTERLINE PRINCIPLE SHALL BE FOR ALL GROUP MTD ELECTRICAL DEVICES.
- 2) IF FIRE ALARM IS ON SAME SIDE OF DOOR AS SWITCHES, FULL STATION SHALL BE HORIZONTALLY SEPARATED BY A MINIMUM OF 18".
- 3) THIS ELEVATION IS A GENERAL ARRANGEMENT OF DEVICES. ARCHITECT PLANS TAKE PRECEDENCE FOR EXACT LOCATIONS.

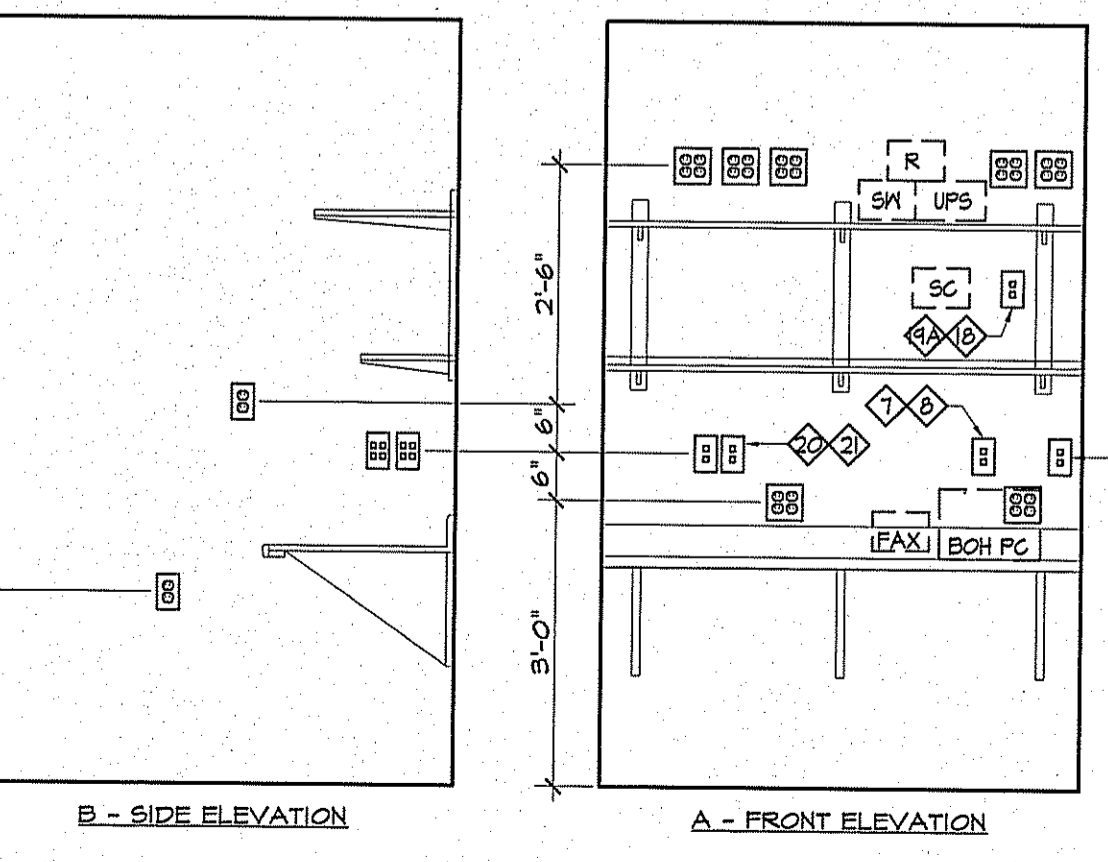
PROVIDE PENDANT WHERE DROP CEILING OR STRUCT EXCEEDS 8'-6"



7 SANDWICH STATION ELEVATION
E.I. SCALE: 1/4" = 1'-0"



6 DIGITAL MENU BOARD DETAIL
E.I. SCALE: 1/4" = 1'-0"

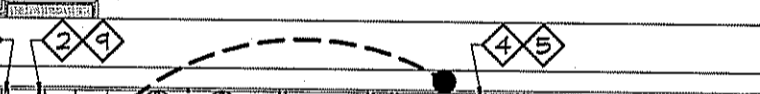


5 OFFICE ELEVATIONS
E.I. SCALE: NOT TO SCALE

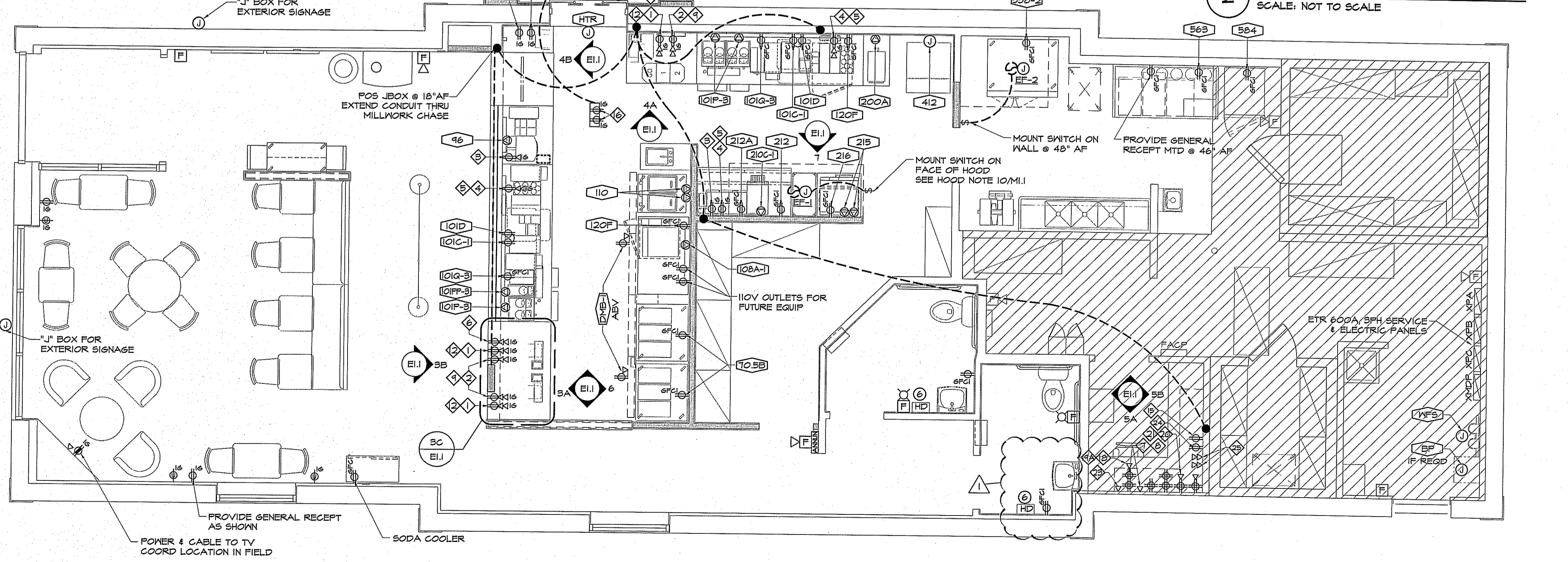
4 D/T POS ELEVS
E.I. SCALE: 1/4" = 1'-0"



3 POS ELEVATIONS
E.I. SCALE: 1/4" = 1'-0"



2 MOUNTING HEIGHT DETAIL
SCALE: NOT TO SCALE



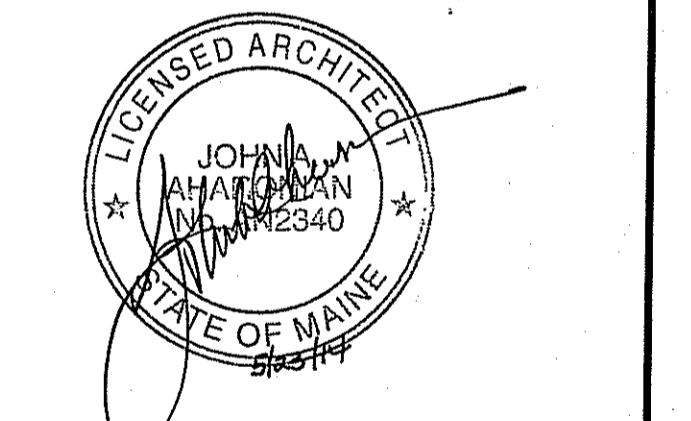
1 POWER & POS COMM PLAN
SCALE: 1/4" = 1'-0"

AHARONIAN & ASSOCIATES INC.
ARCHITECTS
MAINE LICENSED ARCHITECT
310 George Washington Highway
Suite 100
Smithfield, Rhode Island
0 2 9 1 7
T 401-232-5010
F 401-232-5080
WWW.ARCH-ENG.COM

DISCLAIMER
OWNERSHIP AND USE OF DOCUMENTS, DRAWINGS AND SPECIFICATIONS ARE INSTRUMENTS OF PROFESSIONAL SERVICE AND SHALL REMAIN THE PROPERTY OF THE ARCHITECT. THESE DOCUMENTS ARE NOT TO BE USED, IN WHOLE OR IN PART, FOR ANY OTHER PROJECTS OR PURPOSES OR BY ANY OTHER PARTIES THAN THOSE PROPERLY AUTHORIZED BY CONTRACT WITHOUT THE EXPRESS WRITTEN AUTHORIZATION OF THE ARCHITECT.

REVISIONS

NUMBER	REMARKS	DATE
1	LAV RELOCATED	05-23-14



FOR CONSTRUCTION

PROJECT TITLE
DUNKIN' BRANDS®
[eatdrinkthink®]
PC# NEW
FRESH BREW IMAGE:
CAPPUCCINO BLEND

1412 CONGRESS STREET
PORTLAND, ME
Cumberland County

DRAWING TITLE
POWER & POS COMM PLAN, SCHEDULES & DETAILS

DATE MAY 12, 2014	PROJ NO 14016
DRAWN BY JB	CHECKED BY MH

DRAWING NUMBER
E1.1