

TOILET ACCESSORY SCHEDULE

ITEM	DESCRIPTION	MANUFACTURER	MODEL NUMBER	MTGS HEIGHT	REMARKS
1	REAR GRAB BAR	ASI	BT01-36P 36" LG	36" TOP OF UNIT	1 1/2" DIA. PEENED GRIP, POLISHED ENDS
2	SIDE GRAB BAR	ASI	BT01-42P 42" LG	36" TOP OF UNIT	1 1/2" DIA. PEENED GRIP, POLISHED ENDS
3	TOILET PAPER HOLDER	KC PROFESSIONAL	04551	20" BOT OF UNIT	SURFACE MOUNTED
4	COAT HOOK	ASI	0751	48" AF	MTD ON DOOR
5	SOAP DISPENSER	F&B CHEMICAL COMPANY	DERMA FOAM E	42" TO CONTROLS	SEE NATIONAL ACCOUNTS
6	AUTOMATIC HAND DRYER	EXCEL DRYER	XL-BW	42" TO CONTROLS	SEE NATIONAL ACCOUNTS
7	MIRROR (18"x30")	ASI	0620-2436	40" BOT OF MIRROR	
8	TRASH RECEPTACLE	ASI	0450	41" - 45" AF TO OPNS	
9	NOT USED				
10	SAN NAPKIN DISPOSAL	ASI	0852	24" TOP OF UNIT	WOMENS ROOM ONLY

TOILET ACCESSORY SCHEDULE NOTES

- 1) MOUNT ALL TOILET ACCESSORIES IN STRICT ACCORDANCE WITH THE AMERICAN DISABILITIES ACT AND THE STATE OF MAINE ACCESSIBILITY CODE.
- 2) PROVIDE ANCHORS AS REQD FOR MOUNTING ALL ACCESSORIES.
- 3) GC TO FIELD VERIFY ALL SIZES & DIMENSIONS.
- 4) TOILET TISSUE AND PAPER TOWEL DISPENSERS SUPPLIED BY LOCAL DGP AND INSTALLED BY GC.
- 5) ALL HAND DRYERS TO BE PURCHASED VIA NATIONAL ACCOUNTS - ALL DRYER COVERS SHOULD HAVE THE DUNKIN' DONUTS LOGO, WITH THE BRAND APPROVED GREEN MESSAGING BELOW IT.

WALL FINISH SCHEDULE - FRESH BREW "CAPPUCCINO BLEND" IMAGE

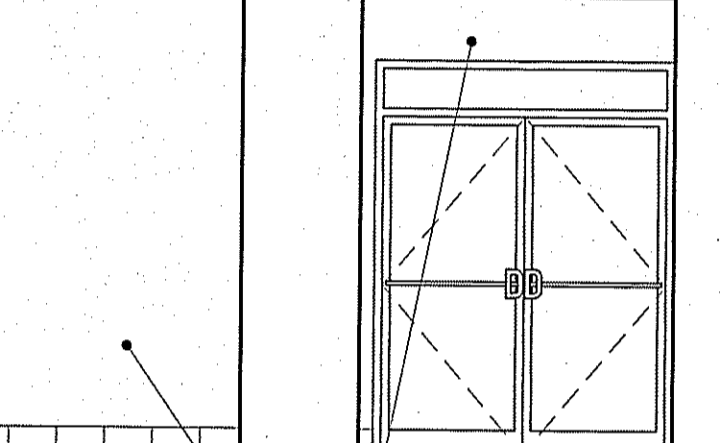
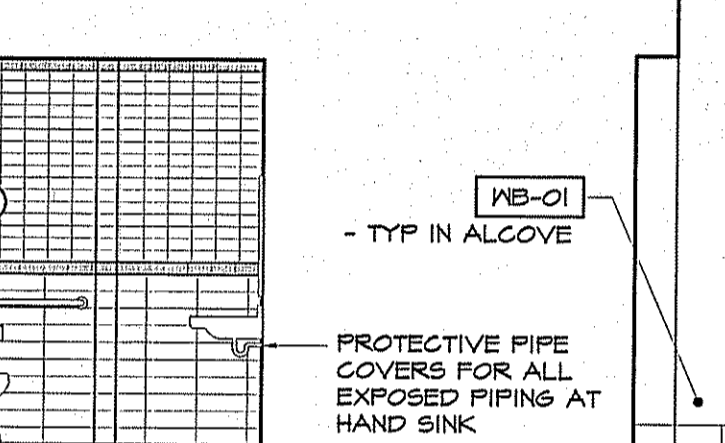
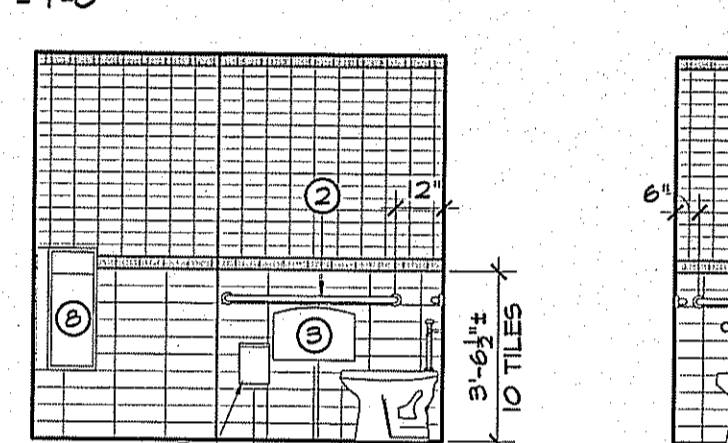
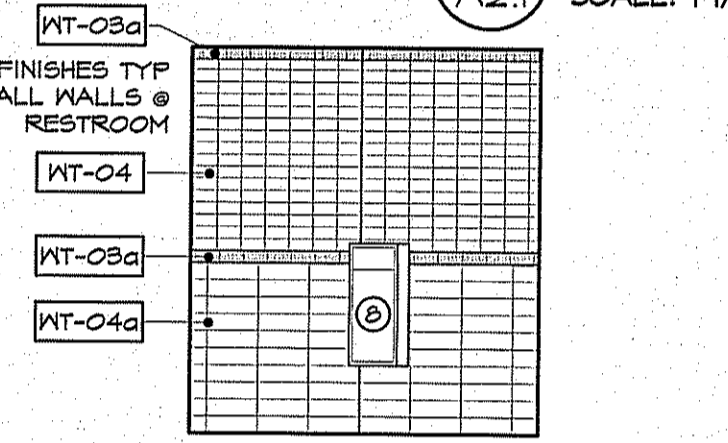
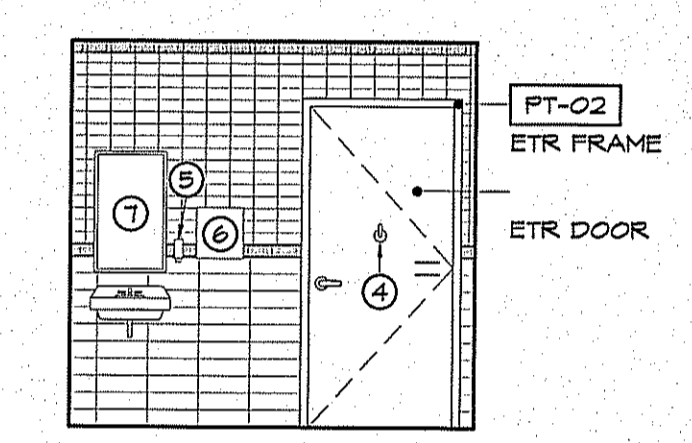
CODE	MATERIAL	MANUFACTURER	PRODUCT NUMBER	DESCRIPTION/REMARKS
FRP-01	FIBERGLASS REINFORCED PANELS	MARLITE	F100 "WHITE"	
FRP-01 ALT	FIBERGLASS REINFORCED PANELS	CRANE KEMLITE	866 "WHITE"	
G-02	GROUT	CUSTOM BUILDING PRODUCTS	#939 "ALABASTER"	USE WITH WT-01 & WT-05
G-03	GROUT	CUSTOM BUILDING PRODUCTS	#932 "BONE"	USE WITH WT-03 & WT-04
FL-02	PLASTIC LAMINATE	FORMICA	454-58 "BRIGHT WHITE" MATTE FINISH	USED @ FRONT LINE MILLWORK SERVICE SIDE
FL-03	PLASTIC LAMINATE	FORMICA	904-59 "BLACK" MATTE FINISH	USED @ BACK SIDES OF REMOVABLE PANELS & FRONT LINE MILLWORK
FL-08	PLASTIC LAMINATE	FORMICA	6906 "WEDGE STRAND"	USED @ FRONT LINE MILLWORK / CONDIMENT STATION
FL-04	PLASTIC LAMINATE	FORMICA	844-58 "DESERT TAN"	FRONT LINE MILLWORK HEADER / SHROUD FINISH & CONDIMENT ACCENT
PT-02	PAINT	SHERWIN WILLIAMS	6884 "OBSTINATE ORANGE"	FINISH: SATIN; DOOR FRAMES
PT-06	PAINT	SHERWIN WILLIAMS	7124 "CANCE"	FINISH: SATIN; LOW WALLS & RESTRMS
PT-14	PAINT	SHERWIN WILLIAMS	6348 "REYNARD"	FINISH: SATIN; WALLS
PT-15	PAINT	SHERWIN WILLIAMS	6642 "RHUMBA ORANGE"	FINISH: SATIN; WALLS
95X-3	SOLID SURFACE	SAMSUNG	STARON #FC155 "CINNAMON"	MILLWORK & CONDIMENT COUNTERTOP
ST-02	POLYURETHANE	SHERWIN WILLIAMS	A68 SERIES	3 COATS OVER STAIN
ST-04	STAIN	SHERWIN WILLIAMS	#5481-0070614 "WEATHERED TEAK" #5134	TRIM FINISH
NB-01	CERAMIC TILE			SEE A1.2
NB-02	TILE COVE BASE			SEE A1.2
WC-01	WALL COVERING	APA COLOR GRAPHICS	FRESH BREW TEXT	
WC-07	WALL COVERING	APA COLOR GRAPHICS	FRESH BREW TAN MUTED LETTERS	USE @ MENU BOARD SOFFIT
WT-01	WALL TILE	DALTILE	RITTENHOUSE SQUARE K175 "BISCUIT"	4-1/4"x12-3/4", USE GROUT G-02 (SERVICE AREA)
WT-03a	WALL TILE	DALTILE	0047441P "ORANGE BURST"	3"x6", USE GROUT G-03 (RESTROOM ACCENT BAND)
WT-04	WALL TILE	DALTILE	RITTENHOUSE SQUARE 0161 "URBAN PUTTY"	3"x6", USE GROUT G-03 (RESTROOM)
WT-04a	WALL TILE	DALTILE	MODERN DIMENSIONS 0161 "URBAN PUTTY"	4-1/4"x12-3/4", USE GROUT G-03 (RESTROOM)
WT-05	WALL TILE	DALTILE	COLOR WAVE GLASS ACCENT CM11361P "ROOTBEER"	3"x6", USE GROUT G-02 (SERVICE AREA ACCENT TILE)

22 TYP CHAIR RAIL DTL A2.1 SCALE: 1/2" = 1'-0"

21 VEST ELEV A1.1 SCALE: 1/4" = 1'-0"

20 VEST ELEV A1.1 SCALE: 1/4" = 1'-0"

23 HALF WALL DETAIL A2.1 SCALE: 1/2" = 1'-0"



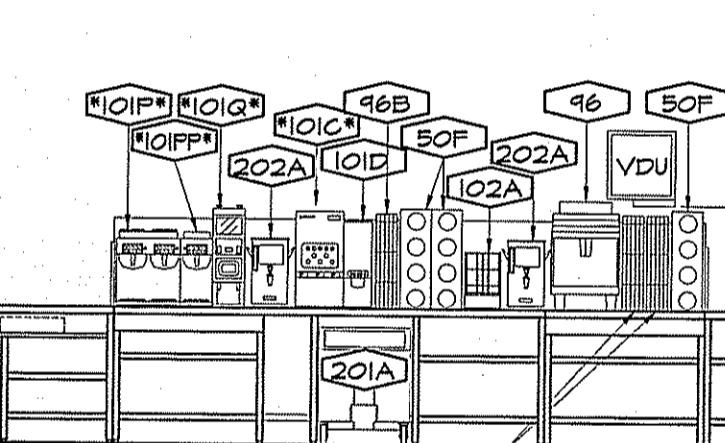
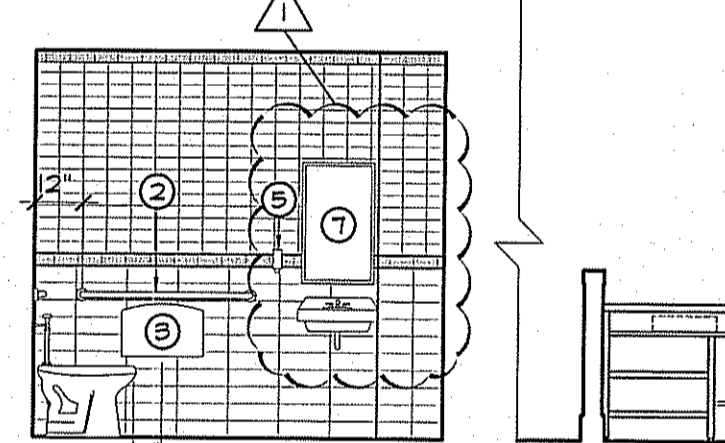
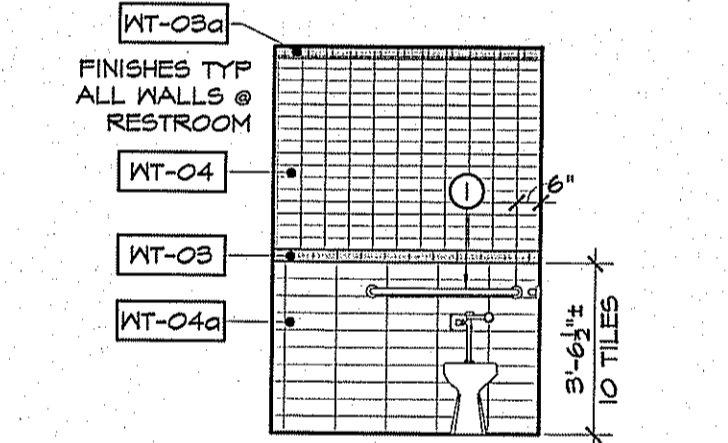
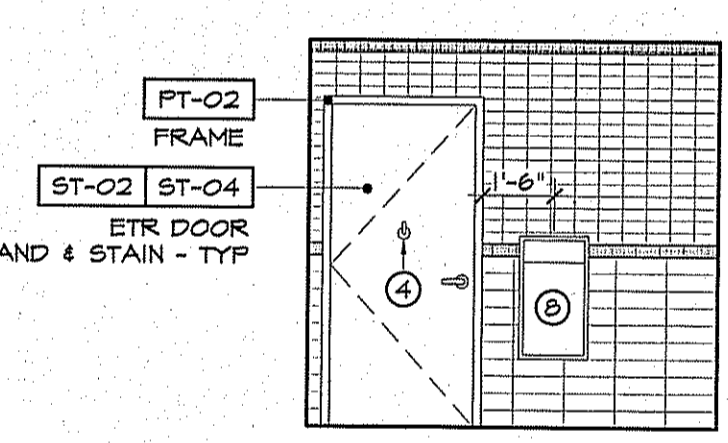
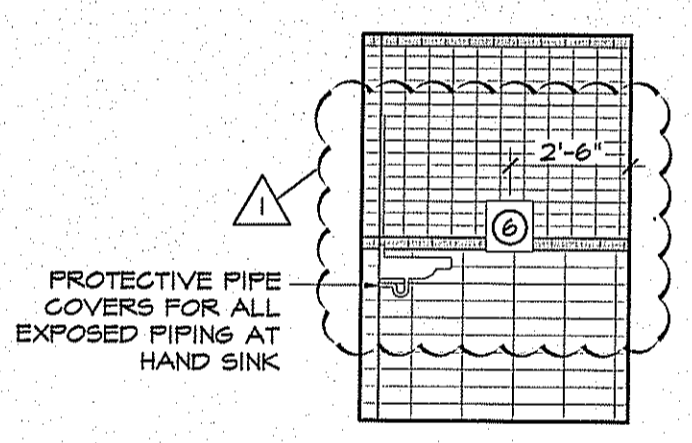
19 WOMENS RESTROOM ELEV A1.1 SCALE: 1/4" = 1'-0"

18 WOMENS RESTROOM ELEV A1.1 SCALE: 1/4" = 1'-0"

17 WOMENS RESTROOM ELEV A1.1 SCALE: 1/4" = 1'-0"

16 WOMENS RESTROOM ELEV A1.1 SCALE: 1/4" = 1'-0"

15 VESTIBULE ELEV A1.1 SCALE: 1/4" = 1'-0"



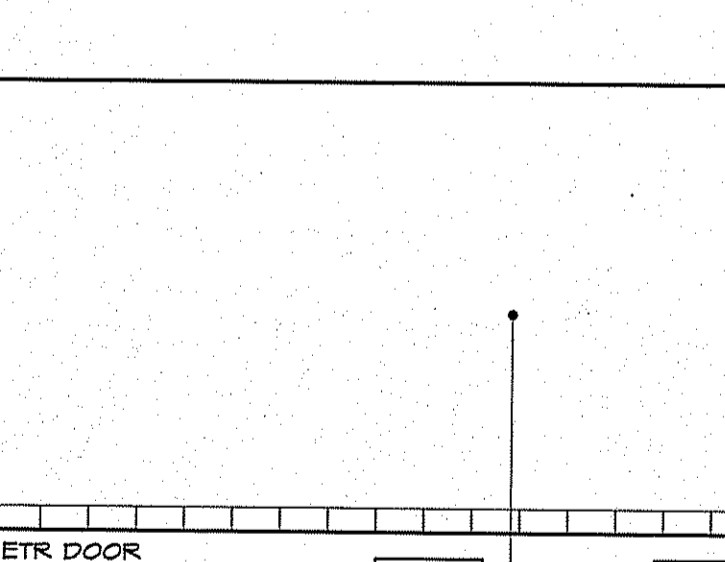
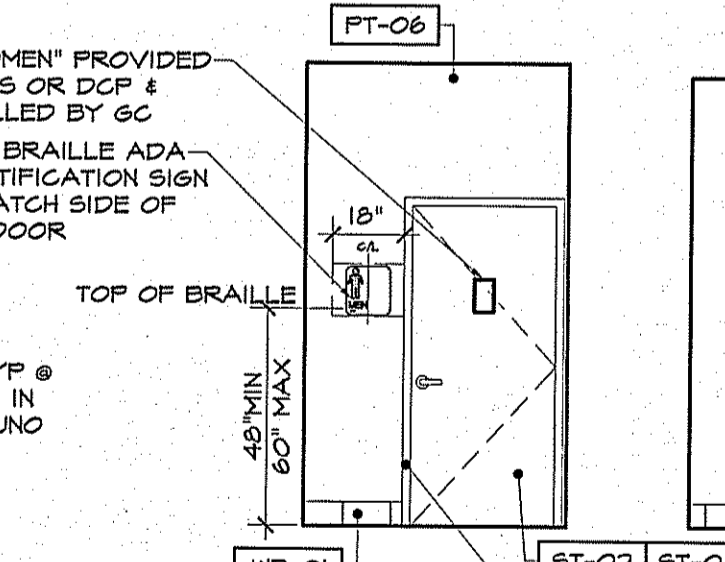
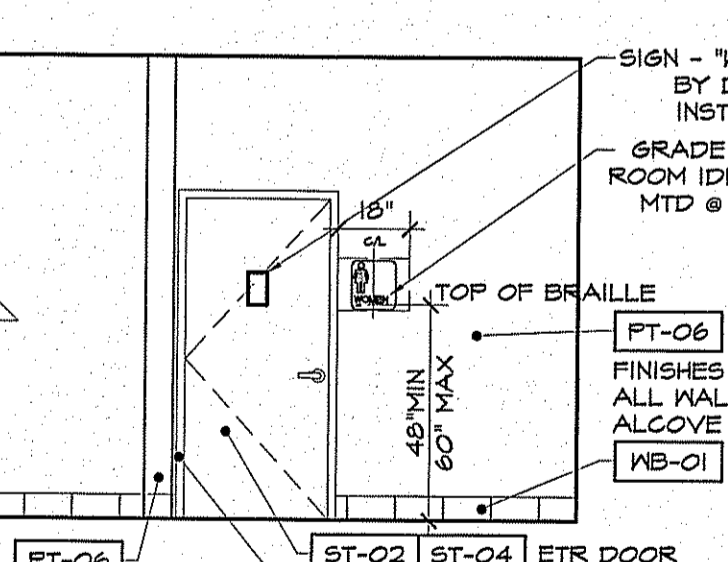
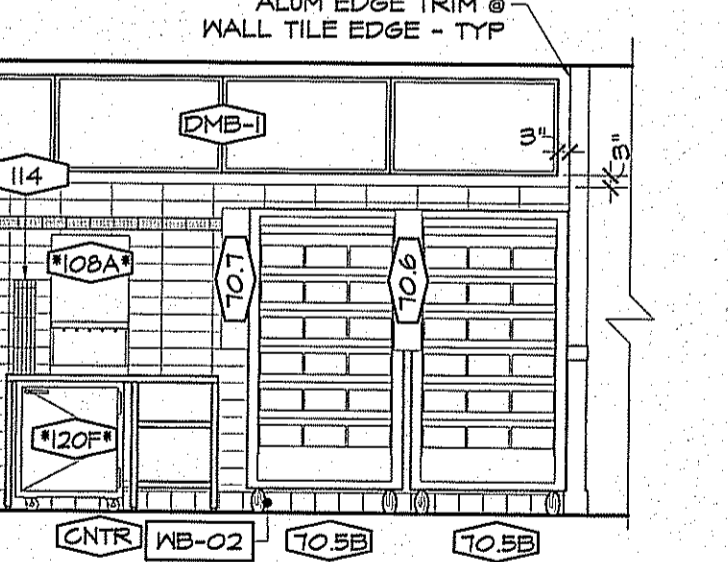
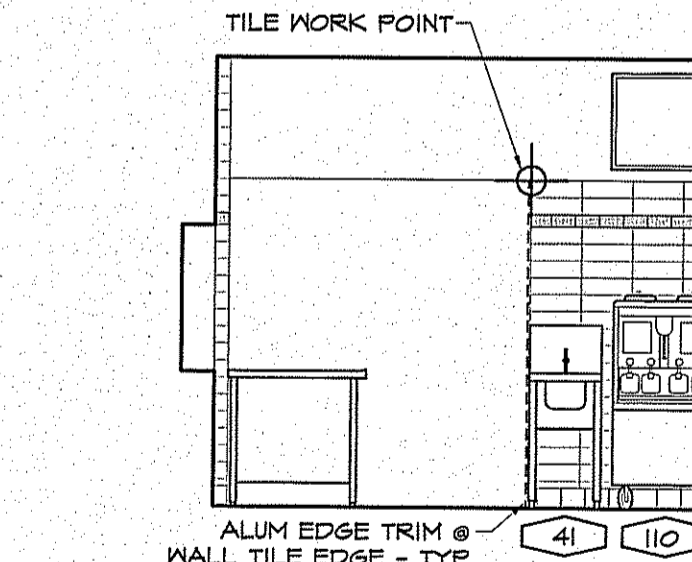
13 MENS RESTROOM ELEV A1.1 SCALE: 1/4" = 1'-0"

12 MENS RESTROOM ELEV A1.1 SCALE: 1/4" = 1'-0"

11 MENS RESTROOM ELEV A1.1 SCALE: 1/4" = 1'-0"

10 MENS RESTROOM ELEV A1.1 SCALE: 1/4" = 1'-0"

9 SERVICE AREA ELEV A1.1 SCALE: 1/4" = 1'-0"

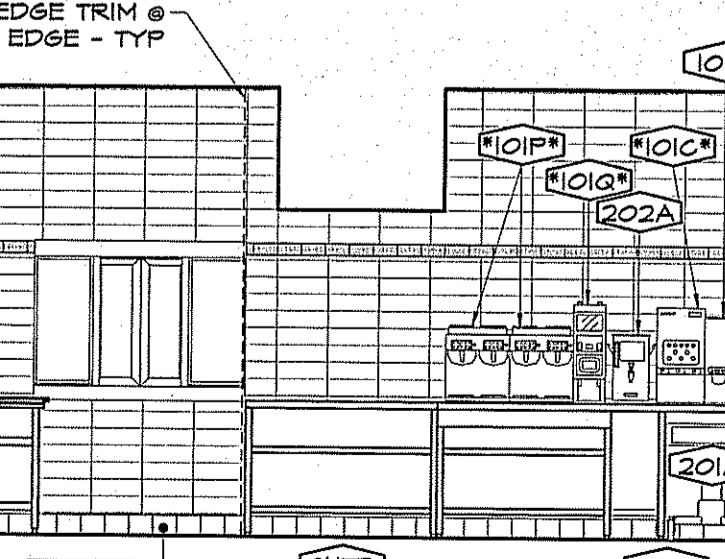
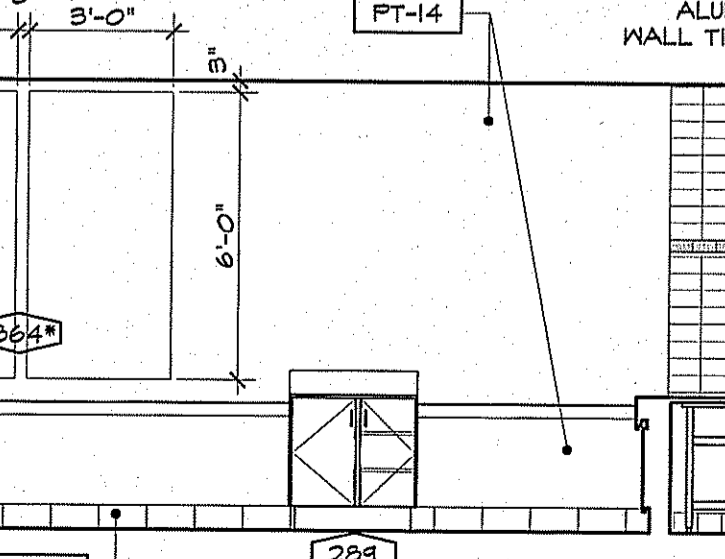
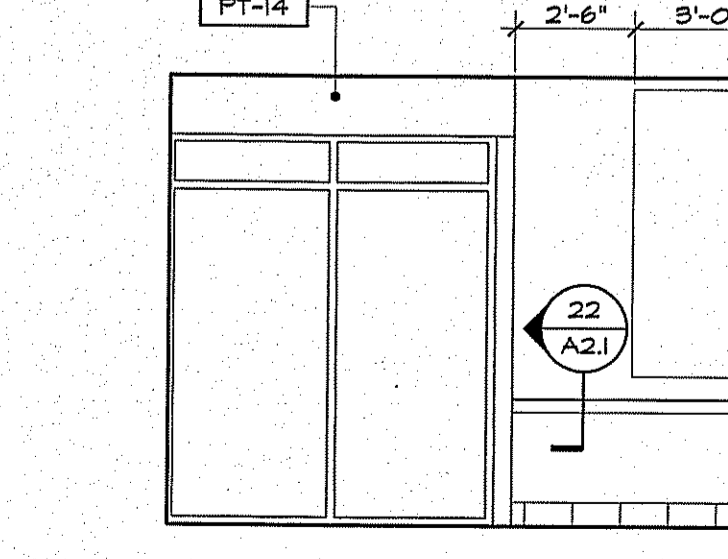
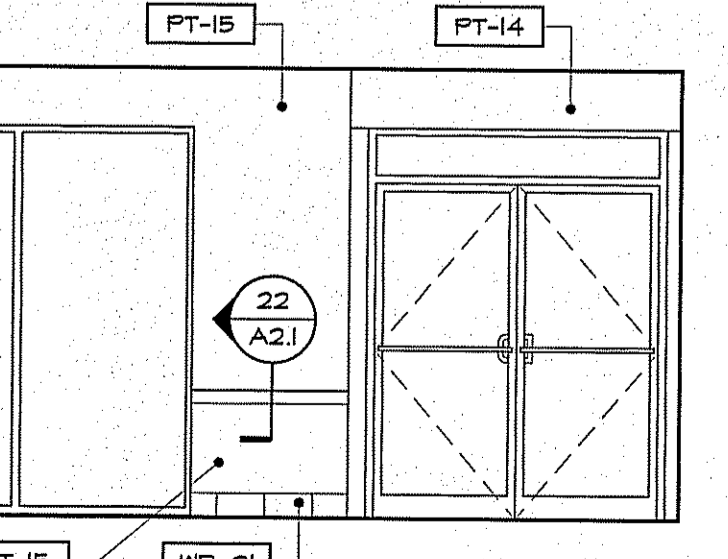
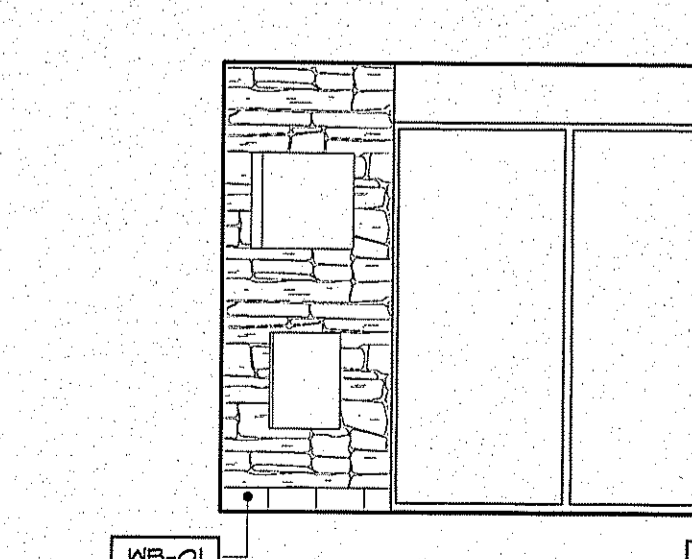


7 SERVICE AREA ELEV A1.1 SCALE: 1/4" = 1'-0"

6 ALCOVE ELEV A1.1 SCALE: 1/4" = 1'-0"

5 ALCOVE ELEV A1.1 SCALE: 1/4" = 1'-0"

4 DINING ROOM ELEV A1.1 SCALE: 1/4" = 1'-0"



3 DINING ROOM ELEV A1.1 SCALE: 1/4" = 1'-0"

2 DINING ROOM/SERVICE AREA ELEV A1.1 SCALE: 1/4" = 1'-0"

1 SALES AREA ELEV A1.1 SCALE: 1/4" = 1'-0"

WALL FINISH SCHEDULE NOTES

- 1) THIS INSTALLATION SHALL BE CONSTRUCTED IN ACCORDANCE WITH THE "FRESH BREW" - CAPPUCCINO BLEND" IMAGE
- 2) EQUIPMENT TAGS SEE EQUIPMENT SCHEDULE
- 3) IN ALL BACK ROOM AREAS, EXIST FRP TO REMAIN. CLEAN ALL FRP. REPLACE DAMAGED FRP WITH FRP-01 AS REQD.

AHARONIAN & ASSOCIATES INC.
ARCHITECTS

MAINE LICENSED ARCHITECT
310 George Washington Highway
Suite 100
Smithfield, Rhode Island
0 2 9 1 7

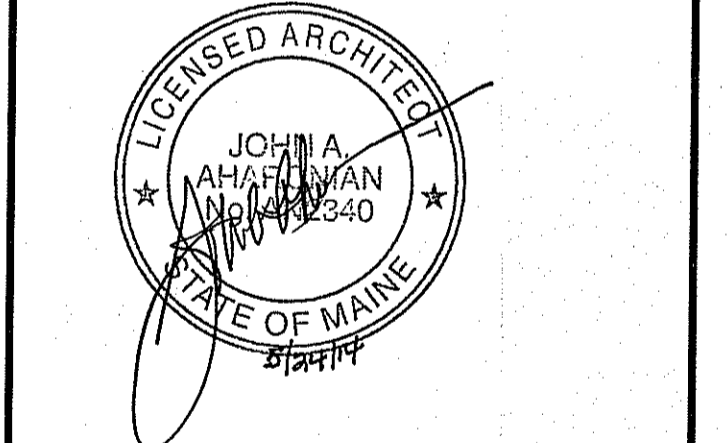
T 401-232-5010
F 401-232-5080
WWW.ARCH-ENG.COM

DISCLAIMER

OWNERSHIP AND USE OF DOCUMENTS, DRAWINGS AND SPECIFICATIONS ARE INSTRUMENTS OF PROFESSIONAL SERVICE AND SHALL REMAIN THE PROPERTY OF THE ARCHITECT. THESE DOCUMENTS ARE NOT TO BE USED, IN WHOLE OR IN PART, FOR ANY OTHER PROJECTS OR PURPOSES OR BY ANY OTHER PARTIES THAN THOSE PROPERLY AUTHORIZED BY CONTRACT WITHOUT THE EXPRESS WRITTEN AUTHORIZATION OF THE ARCHITECT.

REVISIONS

NUMBER	REMARKS	DATE
1	LAV RELOCATED	05-23-14



FOR CONSTRUCTION

PROJECT TITLE
DUNKIN' BRANDS
[eatdrinkthink]

PC# NEW
FRESH BREW IMAGE:
CAPPUCCINO BLEND

1412 CONGRESS STREET
PORTLAND, ME
Cumberland County

DRAWING TITLE
INTERIOR ELEVATIONS, SCHEDULES & DTLs

DATE
MAY 12, 2014

PROJ NO
14016

DRAWN BY
MD

CHECKED BY
MH

DRAWING NUMBER

A2.1