

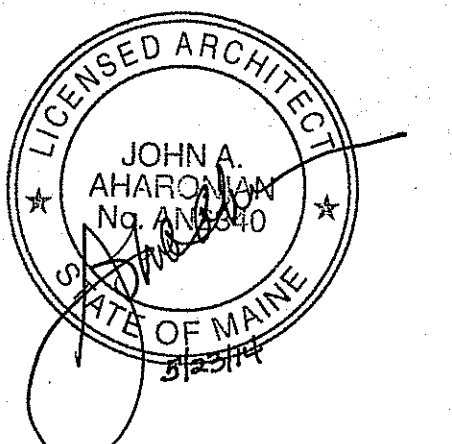
AHARONIAN & ASSOCIATES INC.
ARCHITECTS
 MAINE LICENSED ARCHITECT
 310 George Washington Highway
 Suite 100
 Smithfield, Rhode Island
 02917
 T 401-232-5010
 F 401-232-5080
 WWW.ARCH-ENG.COM

DISCLAIMER

OWNERSHIP AND USE OF DOCUMENTS, DRAWINGS AND SPECIFICATIONS ARE INSTRUMENTS OF PROFESSIONAL SERVICE AND SHALL REMAIN THE PROPERTY OF THE ARCHITECT. THESE DOCUMENTS ARE NOT TO BE USED, IN WHOLE OR IN PART, FOR ANY OTHER PROJECTS OR PURPOSES OR BY ANY OTHER PARTIES THAN THOSE PROPERLY AUTHORIZED BY CONTRACT WITHOUT THE EXPRESS WRITTEN AUTHORIZATION OF THE ARCHITECT.

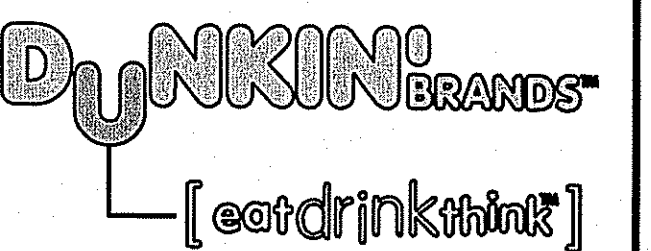
REVISIONS

NUMBER	REMARKS	DATE



FOR CONSTRUCTION

PROJECT TITLE



PC# NEW
 FRESH BREW IMAGE:
 CAPPUCCINO BLEND

1412 CONGRESS STREET
 PORTLAND, ME
 Cumberland County

DRAWING TITLE

**REFLECTED
 CEILING PLAN
 SCHEDULES & DTLs**

DATE MAY 12, 2014	PROJ NO 14016
DRAWN BY JN	CHECKED BY MH

DRAWING NUMBER

A1.3

REFLECTED CEILING PLAN LEGEND

	ETR 2x4 CEILING GRID		PENDANT LIGHT AT SUSPENDED CLOUD
	PATCHED 2x4 CEILING GRID TO MATCH EXISTING		LED RECESSED LIGHT FIXTURE
	2x4 CEILING GRID		PENDANT LIGHT
	GYP BD		HOOD LIGHT
	REINSTALLED SUPPLY AIR DIFFUSER		WALL PACK
	RELOCATED EXIST SUPPLY AIR DIFFUSER		WALL SPOT LIGHT FIXTURE
	REINSTALLED EXIST RETURN AIR GRILLE		REINSTALLED EXIST SMOKE DETECTOR
	RELOCATED EXIST RETURN AIR GRILLE		RELOCATED EXIST SMOKE DETECTOR
	EXHAUST HOOD DUCT		REINSTALLED EXIST WALL MTD EMERG LIGHT
	2x2 LAY-IN LED LIGHT FIXTURE		ETR CL6 MTD EMERG LIGHT
	AWNING LIGHT FIXTURE		REINSTALLED EXIST CL6 MTD EMERG LIGHT
	TRACK LIGHT		RELOCATED EXIST CL6 MTD EMERG LIGHT
			ETR EXIT SIGN
			REINSTALLED EXIST EMERGENCY LIGHT REMOTE HEAD
			SPEAKER
			ETR FLAT SCREEN TV
			CEILING MATERIAL
			CEILING FINISH
			CEILING ELEVATION

XX-XX CEILING FINISH SCHEDULE

CODE	MATERIAL	MANUF	PRODUCT #	DESCRIPTION/REMARKS
CG-X	CEILING GRID			MATCH EXISTING
CT-X	CEILING TILE			MATCH EXISTING
CT-01	ACOUSTIC CEILING TILE	ARMSTRONG	#1761 WH (2' x 4')	WHITE, FINE FIGURED, SECONDLOOK 2
CT-03	VINYL FACED CL6 TILE	ARMSTRONG	#870 (2' x 4')	
CT-04	CEILING GRID	ARMSTRONG	7800 WH	WHITE GRID, 15/16"
ETR GB	ETR GYPSUM BOARD			
PX-30	PAINT	SHERWIN WILLIAMS	SW 7006	EXTRA WHITE; FLAT

MUSIC SYSTEM NOTES

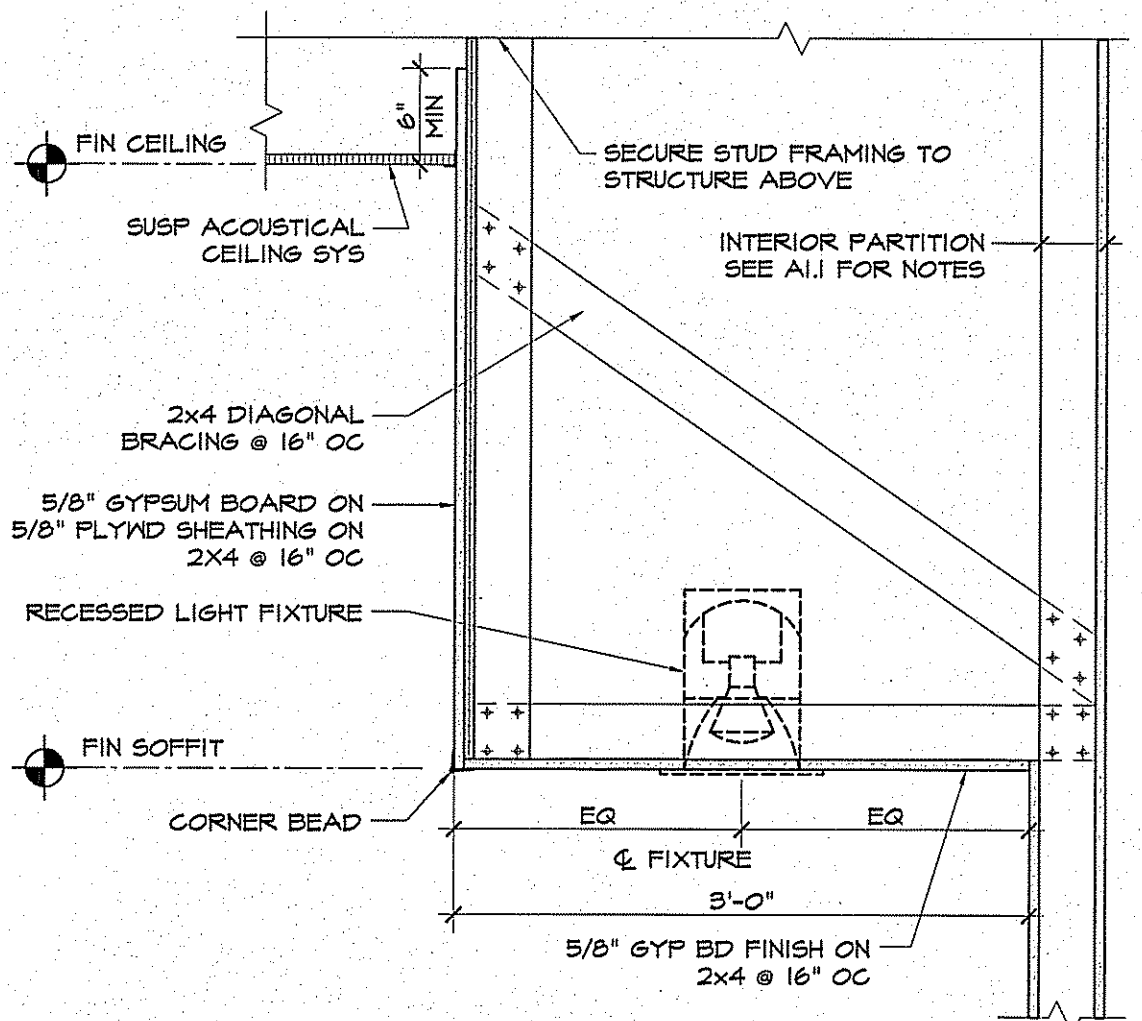
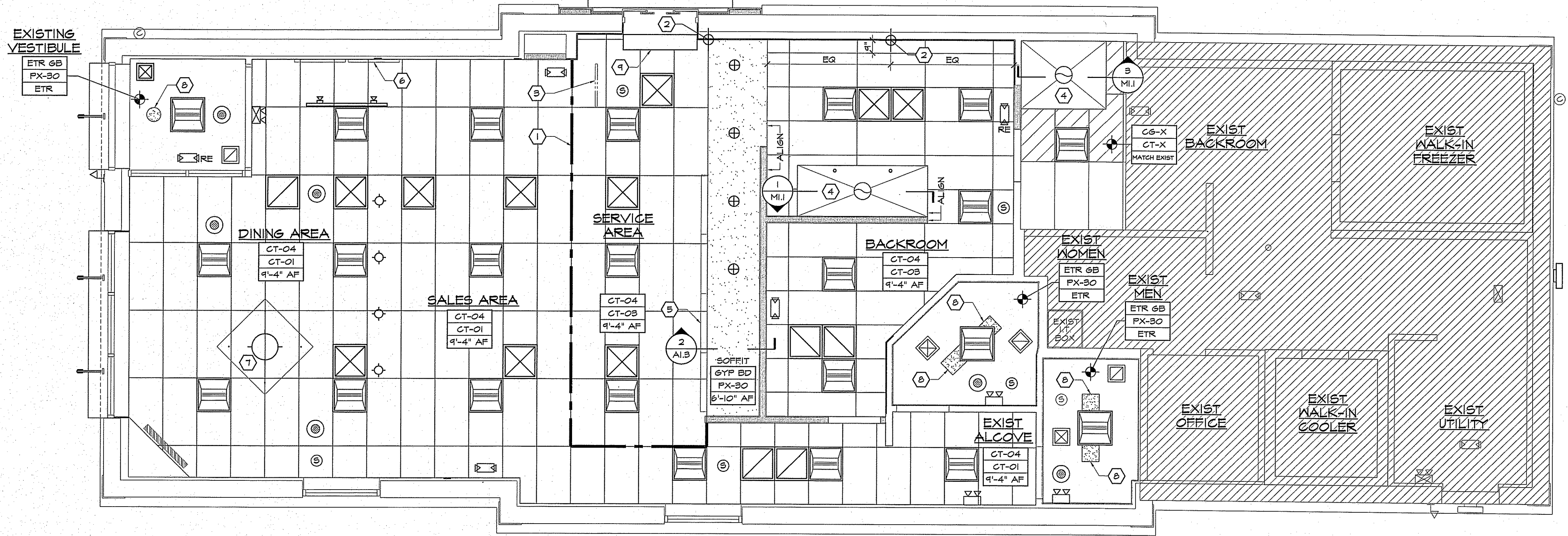
- MUSIC SYSTEM IS REQUIRED IN ALL NEW AND REMODEL STORES.
- ALL CEILING SPEAKERS TO BE FLUSH MOUNTED. COLOR: WHITE.
- A MINIMUM OF TWO SPEAKERS IN THE SEATING AREA, ONE IN EACH RESTROOM & ONE IN THE VESTIBULE. NO SPEAKERS IN THE SERVICE AREA.
- HARDWARE TO BE INSTALLED IN THE OFFICE. FIELD VERIFY AND COORDINATE WITH FRANCHISE FOR THE EXACT LOCATION OF THE UNIT AND VOLUME CONTROLS.
- DUNKIN' BRANDS RECOMMENDS MUZAK AS THE MUSIC & SYSTEM SUPPLIER. MUZAK CONTACT INFO:
 NATIONAL ACCOUNT REP: KELLY RISHTE
 P: 708-301-1200
 F: 708-318-8018
 EMAIL: KRISHTY@MUZAK.COM
 WWW.MUZAK.COM

CEILING FINISH NOTES

- ANY EXISTING DIFFUSERS/RETURNS, SMOKE DETECTORS, EMERGENCY LIGHTING, SECURITY CAMERAS & ALL RELATED EQUIPMENT THAT ARE REMOVED DURING CONSTRUCTION SHALL BE RE-INSTALLED IN SAME/SIMILAR LOCATIONS TO COMPLY WITH APPLICABLE CODES. IF A FIXTURE IS DEEMED UNACCEPTABLE FOR REUSE, A NEW FIXTURE SHALL BE PROVIDED TO MATCH EXISTING.
- SEE A2.1 FOR FINISHES NOT LISTED HERE.

KEYED PLAN NOTES

- CEILING FINISH TRANSITION.
- CEILING GRID WORK POINT.
- PICK-UP SIGN SUPPLIED BY MILLWORK SUPPLIER & INSTALLED BY GC. BOT SIGN MTD @ 8'-0" AF.
- EXHAUST HOOD.
- MENU BOARDS MTD ON FACE OF SOFFIT SEE A2.1, K1.1 & K1.2.
- GRAPHIC PANELS - SEE A2.1.
- 'ORANGE' CEILING CLOUD SUPPLIED BY D65 RETAIL & INSTALLED BY GC. MOUNT BOT @ 12" BELOW CEILING. SEE NATIONAL ACCOUNTS.
- PATCH GYPSUM BOARD CEILING TO MATCH EXISTING ADJACENT.
- PROVIDE ELECTRIC AIR CURTAIN ABOVE DRIVE-THRU WINDOW UNIT, MOUNTED 2" ABOVE WINDOW, CENTERED ON WINDOW OPENING. MARS AIR SYSTEMS MODEL LPV248-IECC-0B



2 SOFFIT DETAIL
 SCALE: 1" = 1'-0"

1 REFLECTED CEILING PLAN
 SCALE: 1/4" = 1'-0"

© AHARONIAN & ASSOCIATES INC 2014