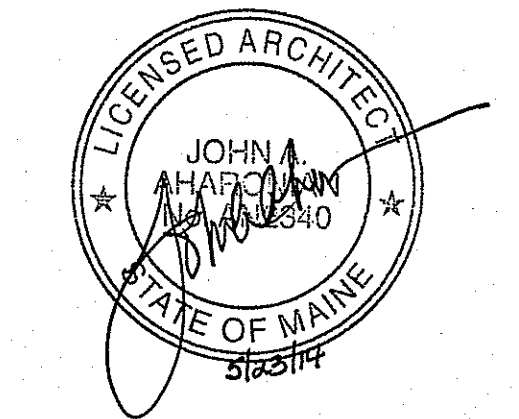


AHARONIAN & ASSOCIATES INC.
 ARCHITECTS
 MAINE LICENSED ARCHITECT
 310 George Washington Highway
 Suite 100
 Smithfield, Rhode Island
 0 2 9 1 7
 T 401-232-5010
 F 401-232-5080
 WWW.ARCH-ENG.COM

DISCLAIMER
 OWNERSHIP AND USE OF DOCUMENTS, DRAWINGS AND SPECIFICATIONS ARE INSTRUMENTS OF PROFESSIONAL SERVICE AND SHALL REMAIN THE PROPERTY OF THE ARCHITECT. THESE DOCUMENTS ARE NOT TO BE USED, IN WHOLE OR IN PART, FOR ANY OTHER PROJECTS OR PURPOSES OR BY ANY OTHER PARTIES THAN THOSE PROPERLY AUTHORIZED BY CONTRACT WITHOUT THE EXPRESS WRITTEN AUTHORIZATION OF THE ARCHITECT.

| REVISIONS | NUMBER | REMARKS | DATE |
|-----------|--------|---------|------|
| △ | | | |
| | | | |
| | | | |
| | | | |
| | | | |

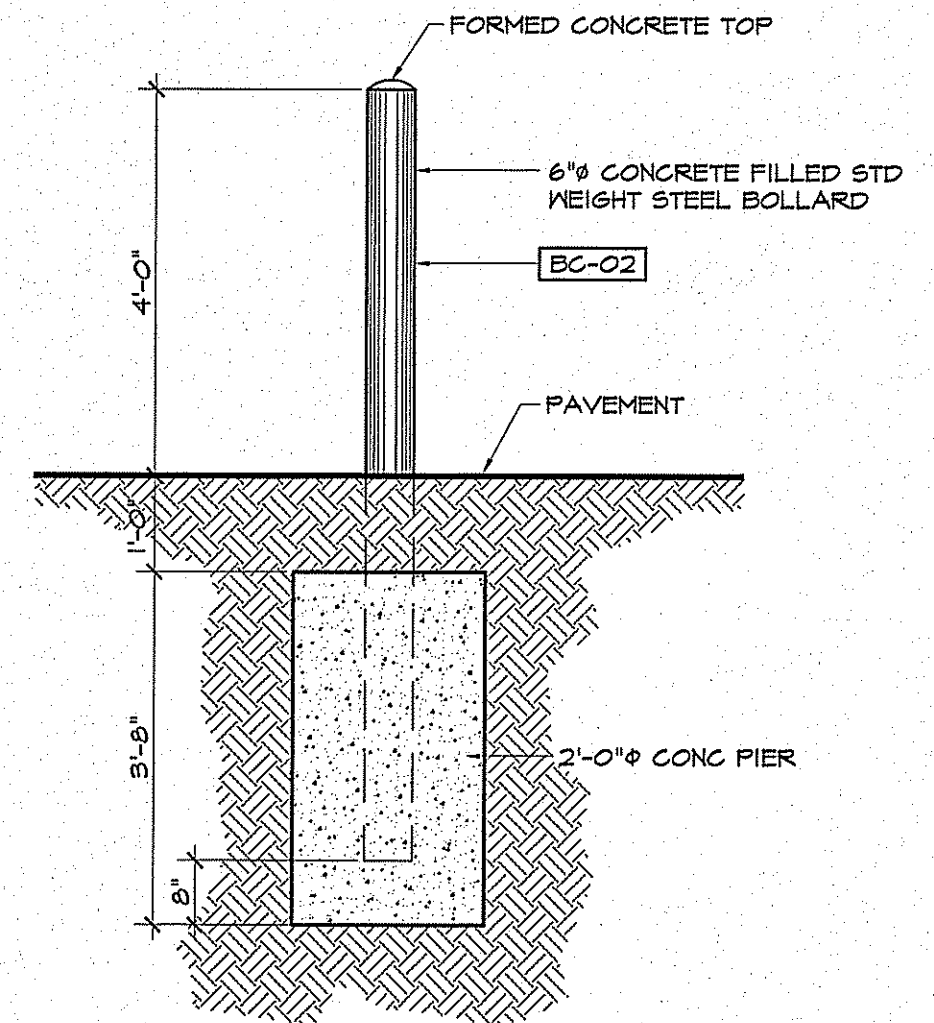


FOR CONSTRUCTION
 PROJECT TITLE
DUNKIN' BRANDS
 [eatdrinkthink]
 PC# NEW
 FRESH BREW IMAGE:
 CAPPUCCINO BLEND
 1412 CONGRESS STREET
 PORTLAND, ME
 Cumberland County

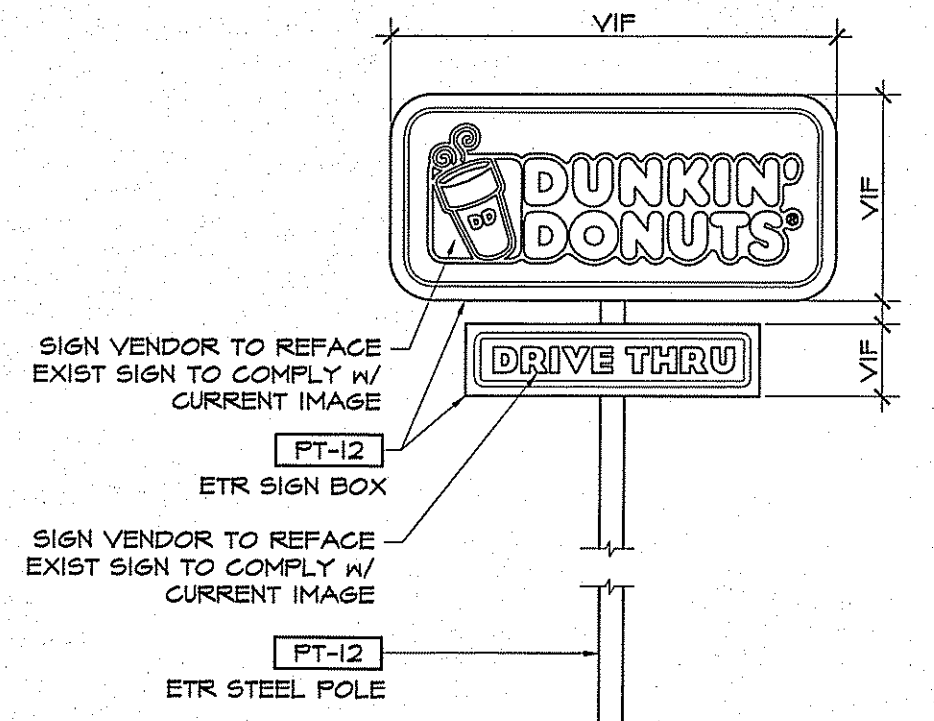
SCHEMATIC SITE PLAN & DETAILS
 DATE: MAY 12, 2014
 PROJ NO: 14016
 DRAWN BY: JN
 CHECKED BY: MH

DRAWING NUMBER
A0.2

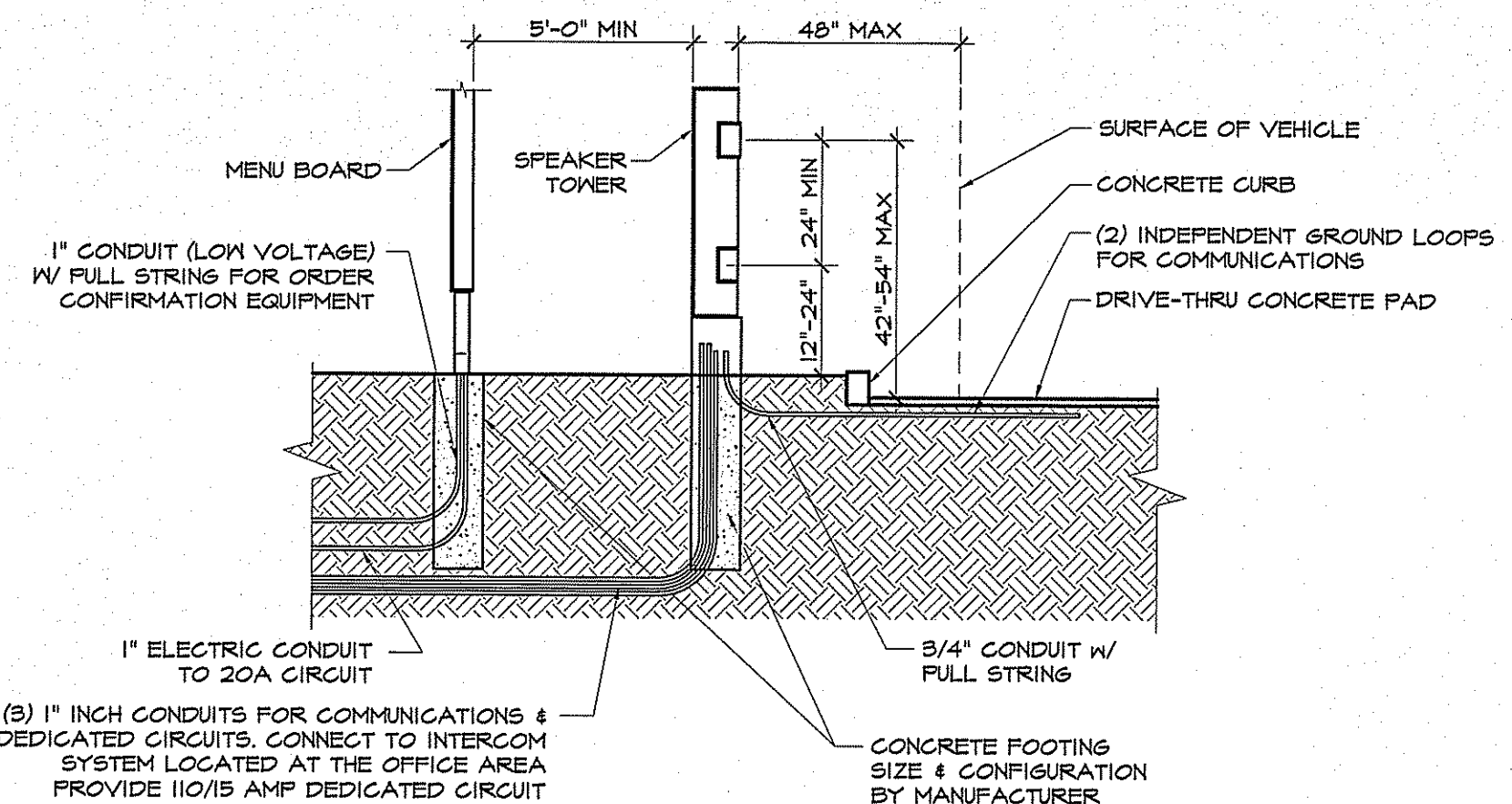
- PYLON SIGN NOTES**
- 1) FACE TO BE FORMED CLEAR POLYCARBONATE, DECORATED SECOND SURFACE VINYL.
 - 2) COFFEE CUP PORTION OF LOGO TO BE EMBOSSED - BALANCE OF LETTERS TO BE FLAT (NOT EMBOSSED).
 - 3) VINYL COLORS TO BE: DD ORANGE 3M #3630-3123; DD MAGENTA 3M #3630-1374; DARK BROWN (ON CUP LOGO) 3M #3630-34.
 - 4) FORMED "CAP-OVER" FACE FITS OVER ALUMINUM RETURNS FTD, TO MATCH BENJAMIN MOORE 2116-10 NIGHTSHADE SEMI-GLOSS FINISH.
 - 5) ILLUMINATION: HO/CFL FLUORESCENT LAMPS OR WHITE NICHIA LEDS. CONSULT LOCAL ZONING CODE FOR INTERNAL ILLUMINATION ALLOWANCE.
 - 6) SEE NATIONAL ACCOUNTS FOR ORDERING INFORMATION.
 - 7) SEE A3.1 FOR FINISH INFORMATION.
 - 8) CONSULT FRANCHISEE FOR FINAL PYLON OPTION.



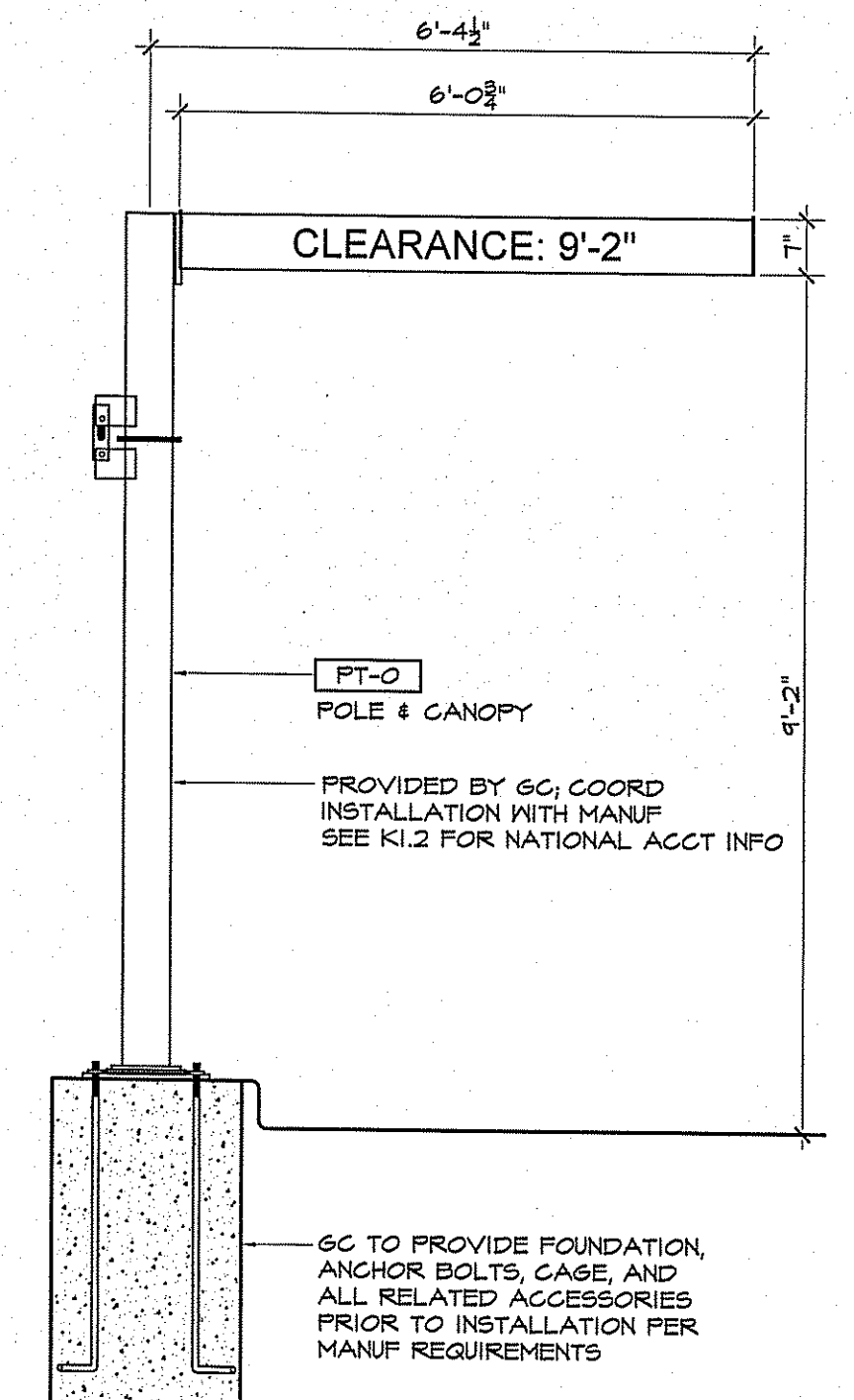
7 BOLLARD DETAIL
 A0.2 SCALE: 1/2" = 1'-0"



6 PYLON SIGN DETAIL
 A0.2 SCALE: 1/4" = 1'-0"



5 MENU BOARD DETAIL
 A0.2 SCALE: 1/4" = 1'-0"



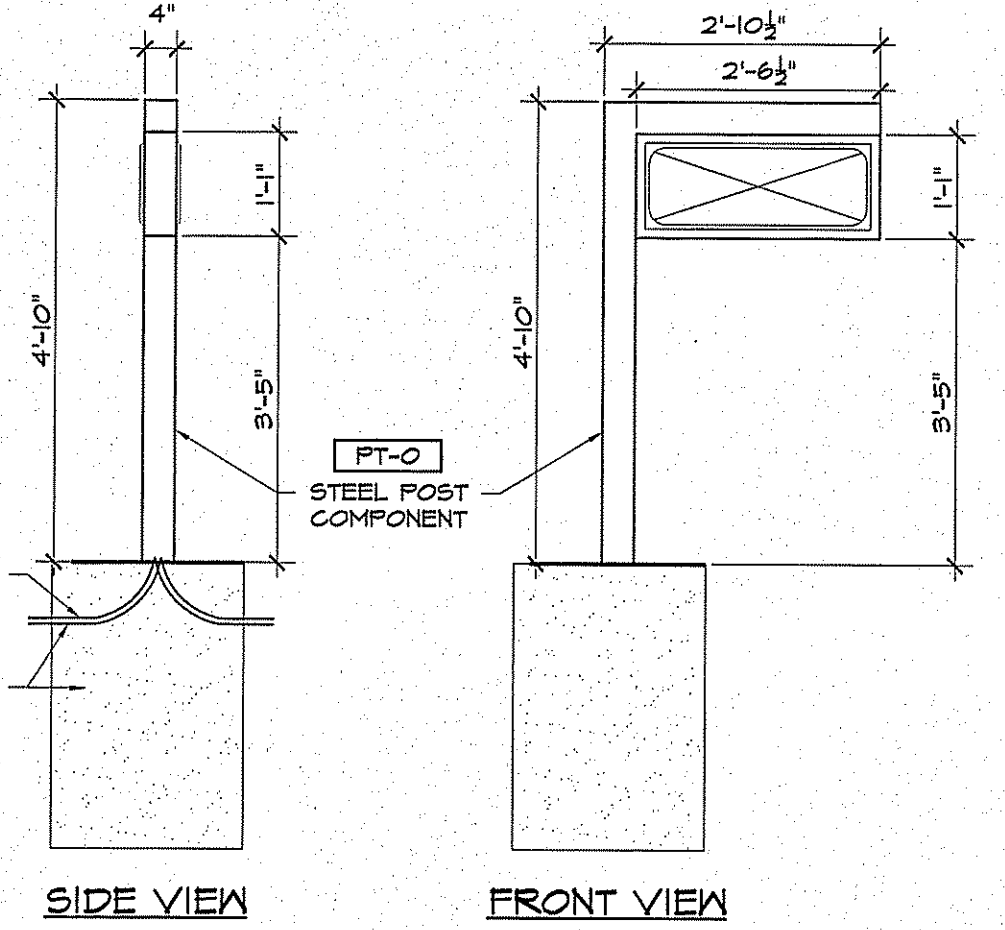
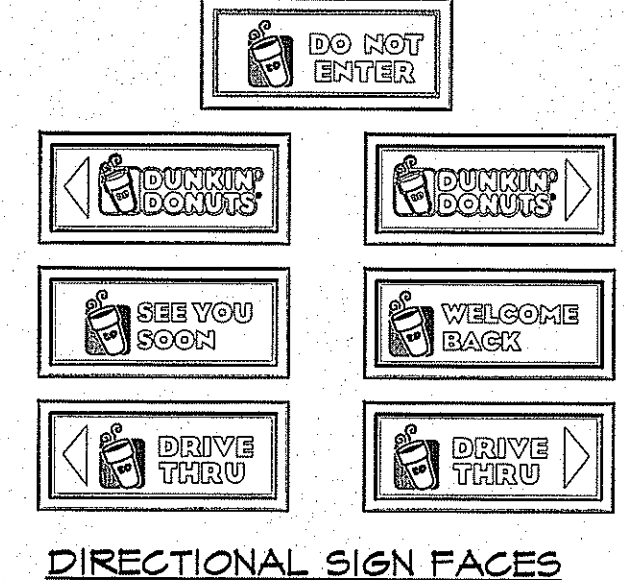
4 LIMIT BAR DETAIL
 A0.2 SCALE: 1/2" = 1'-0"

SITE SIGN SCHEDULE

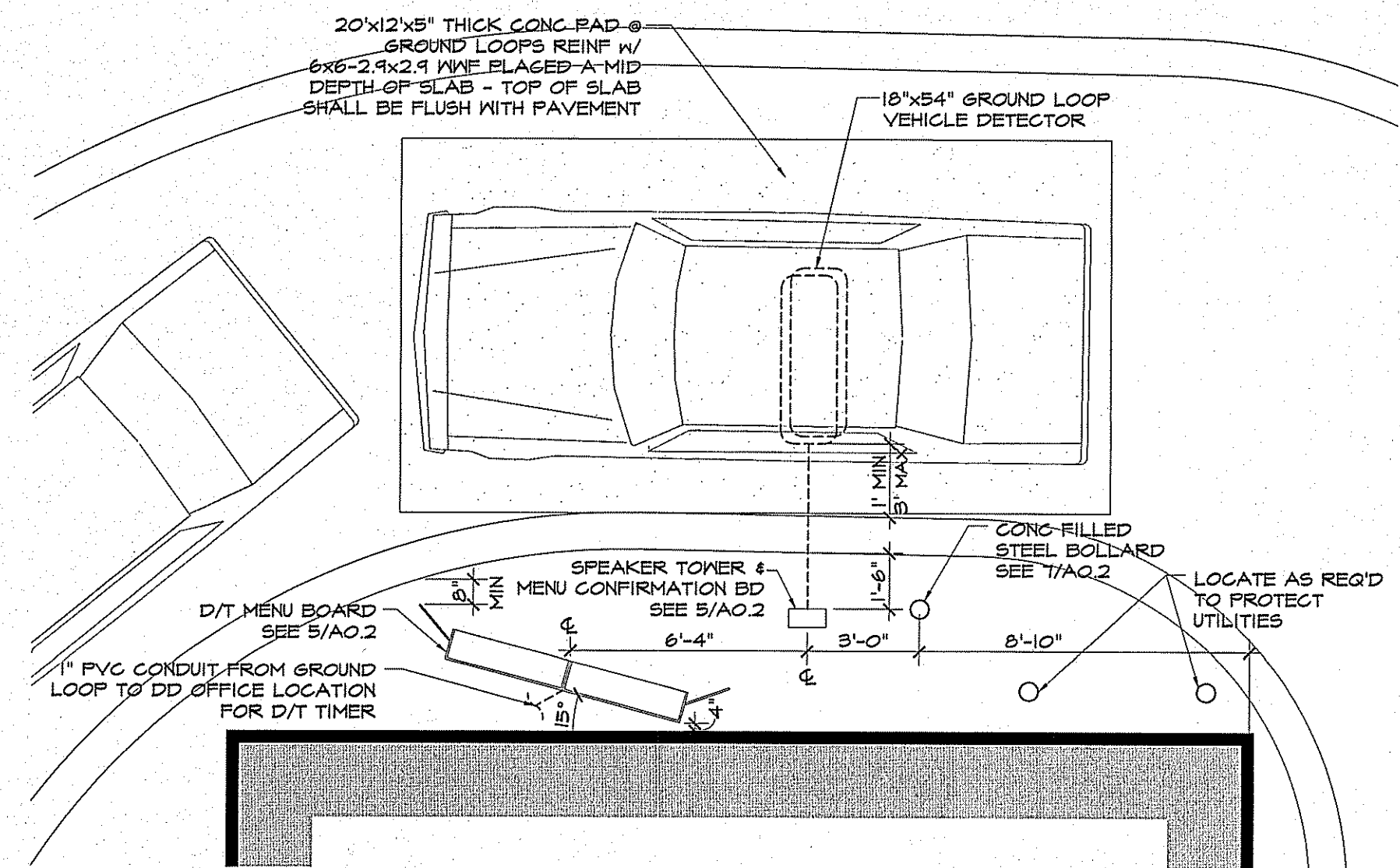
| QTY | LOCATION | OVERALL DIMENSIONS | LETTERS | AREA |
|-----|--------------------|-----------------------------|---------|------|
| 1 | PYLON | VERIFY IN FIELD | VIF | VIF |
| 6 | SITE (DIRECTIONAL) | 2'-6 1/2" x 1'-1 1/4" x 5'D | 5" H | |

- SITE NOTES**
- 1) CLEAN & PREP ALL SURFACES AS REQD PER PAINT MANUF SPECIFICATIONS PRIOR TO PAINTING. VERIFY CONDITION OF EXISTING MATERIALS - REPAIR / REPLACE MATERIALS TO MATCH EXISTING AS REQD. APPLY PAINT IN STRICT ACCORDANCE WITH PAINT MANUF SPECIFICATIONS.
 - 2) SITE & SIGN DETAILS SHOWN ARE SCHEMATIC ONLY. COORDINATE LOCATIONS IN FIELD WITH FRANCHISEE AND DD CONSTRUCTION MANAGER.
 - 3) RESTRIPIING BY LANDLORD.
 - 4) CLEAN & REPAIR/REPLACE SITE LIGHTING FIXTURES, LENS & LAMPS AS REQUIRED.

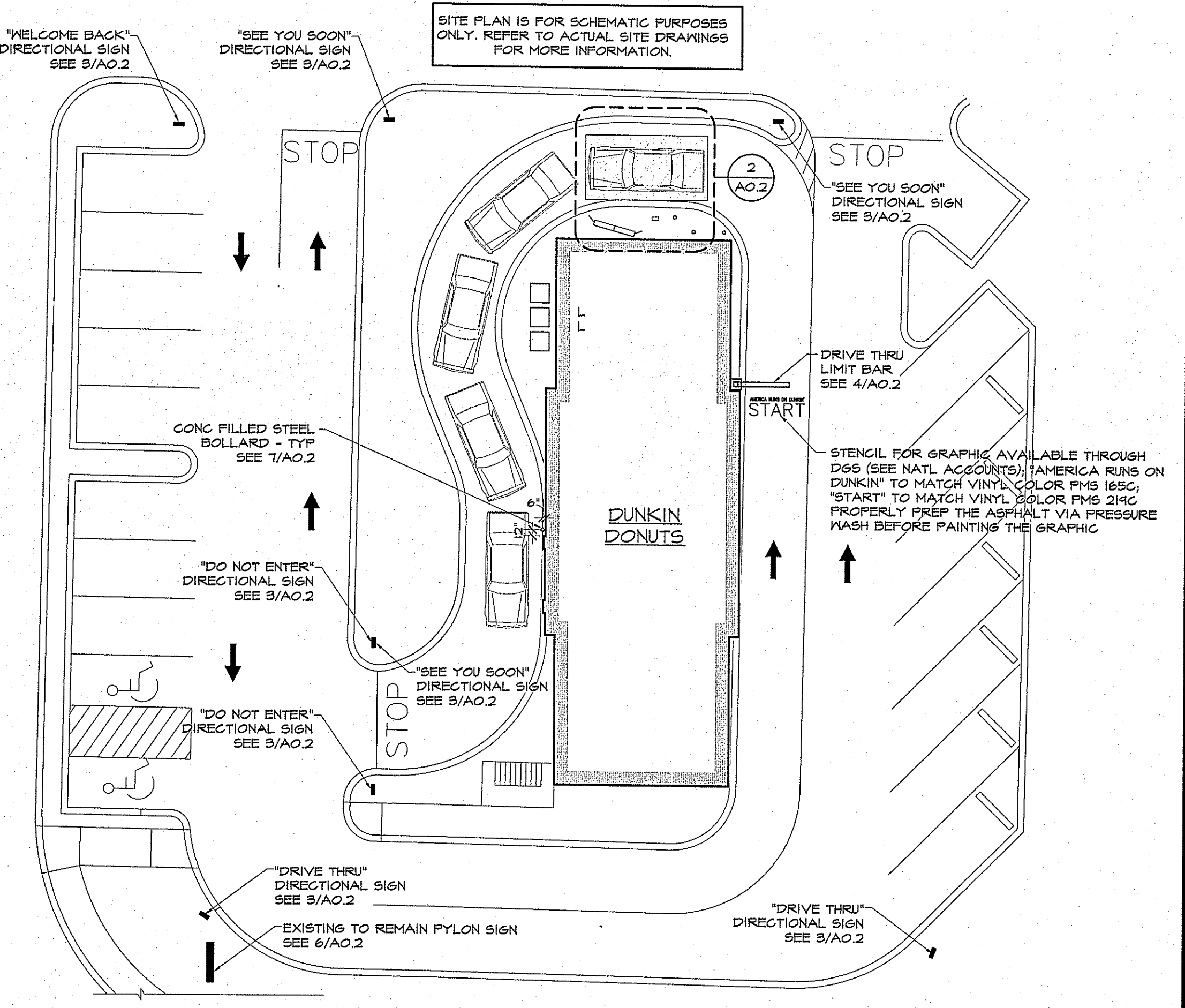
- DIRECTIONAL SIGN NOTES**
- 1) SEE DUNKIN' BRANDS WEBSITE: www.ddris.com/extranet FOR COMPLETE INFORMATION AND DETAILS.
 - 2) AREA OF SIGN = 2.98 SF
 - 3) LIGHTING = INTERNALLY ILLUMINATED. VERIFY WITH TOWN CODE & PROVIDE NON-INTERNAL ILLUMINATED SIGNS AS REQD.
 - 4) LOCATE DIRECTIONAL SIGNS PER SITE PLAN. VERIFY FINAL LOCATIONS W/ OWNER PRIOR TO ORDERING.



3 DIRECTIONAL SIGN DETAILS
 A0.2 SCALE: 1/2" = 1'-0"



2 MENU BOARD LOCATION
 A0.2 SCALE: 1/4" = 1'-0"



1 SCHEMATIC SITE PLAN
 A0.2 SCALE: 1/4" = 1'-0"

© AHARONIAN & ASSOCIATES INC 2014