

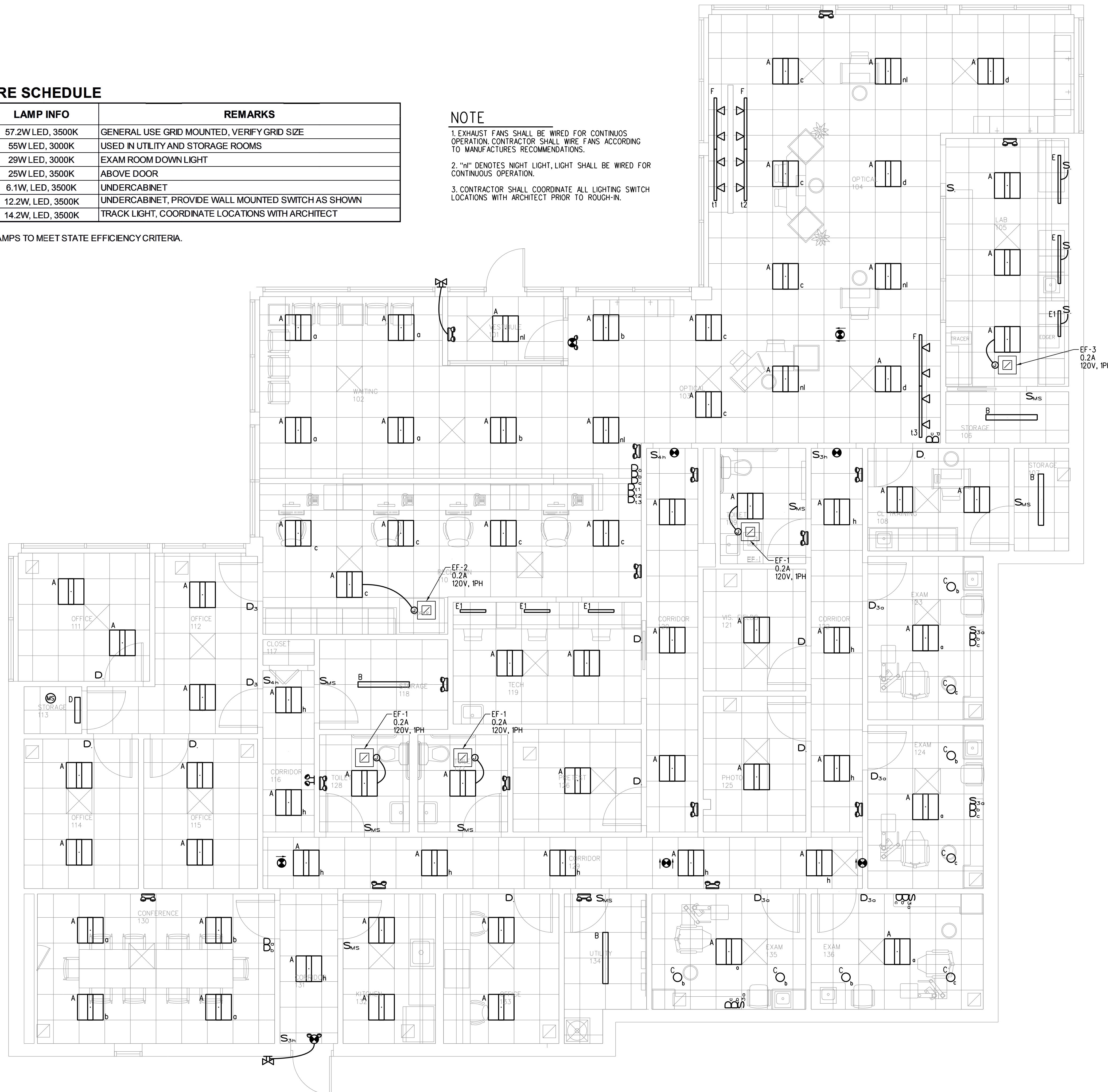
**LIGHT FIXTURE SCHEDULE**

TYPE	MANUFACTURER AND MODEL NUMBER	LAMP INFO	REMARKS
A	FINELITE No HPR-LED-F-2x2-RCO-HO-3500K-120V-SC (DIMMING)	57.2W LED, 3500K	GENERAL USE GRID MOUNTED, VERIFY GRID SIZE
B	COLUMBIA No LCS4-30HL-EDU-GLR	55W LED, 3000K	USED IN UTILITY AND STORAGE ROOMS
C	FOCAL POINT No FLC6D-RF-2500L-277-LD1-T-BH-LC6-RD-2500L-30K-DN-WD-WP	29W LED, 3000K	EXAM ROOM DOWN LIGHT
D	COLUMBIA LCL2-35ML-ESDU-GLR	25W LED, 3500K	ABOVE DOOR
E	FINELITE No UC-E-22"-S-PS-8W-ES2	6.1W, LED, 3500K	UNDERCABINET
E1	FINELITE No UC-E-45"-S-PS-8W-ES2	12.2W, LED, 3500K	UNDERCABINET, PROVIDE WALL MOUNTED SWITCH AS SHOWN
F	PRESCOLITE No AKTMNLED9L35K8XFL55WH	14.2W, LED, 3500K	TRACK LIGHT, COORDINATE LOCATIONS WITH ARCHITECT

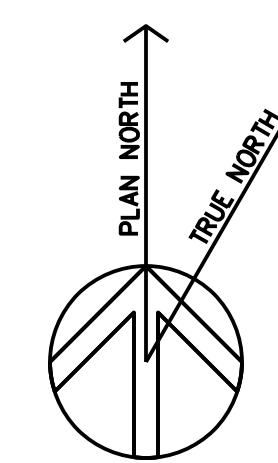
NOTES:  
1. FIXTURES SHALL BE ENERGY STAR RATED OR HAVE HIGH PERFORMANCE BALLASTS AND LAMPS TO MEET STATE EFFICIENCY CRITERIA.  
2. CONTRACTOR SHALL APPLY FOR ALL STATE EFFICIENCY INSENTVMS ON OWNERS BEHALF.

**NOTE**

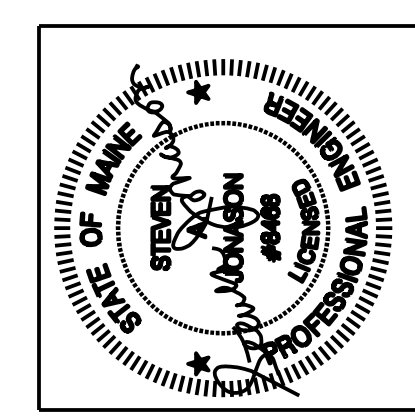
1. EXHAUST FANS SHALL BE WIRED FOR CONTINUOUS OPERATION. CONTRACTOR SHALL WIRE FANS ACCORDING TO MANUFACTURER'S RECOMMENDATIONS.  
2. "nl" DENOTES NIGHT LIGHT, LIGHT SHALL BE WIRED FOR CONTINUOUS OPERATION.  
3. CONTRACTOR SHALL COORDINATE ALL LIGHTING SWITCH LOCATIONS WITH ARCHITECT PRIOR TO ROUGH-IN.



**LIGHTING PLAN**  
SCALE: 1/4" = 1'-0"



Michael Charek Architects  
25 Hanley Street  
Portland, Maine 04105  
(207) 761-0556



Offices for Casco Bay Eyecare  
1440 Congress Street  
Portland, ME 04102

Title  
LIGHTING PLAN

Scale: 1/4" = 1'-0"

Date: 5/17/16

Revisions  
05/17/16 ISSUED FOR CONSTRUCTION

Sheet

E1