

DOOR SCHEDULE												
NO.	DOOR TYPE	MAT.	FIN.	WIDTH	HEIGHT	THICK.	FRAME TYPE	MAT.	FIN.	HDWR.	FIRE RATING	NOTES
101	EXG.	--	--	--	--	--	--	--	--	--	--	1
102	1	ALUM	FF	3'-0"	7'-0"	1 3/4"	A	ALUM	FF	HW-1	--	2
103	NOT USED	--	--	--	--	--	--	--	--	--	--	
104	NOT USED	--	--	--	--	--	--	--	--	--	--	
105	--	--	--	3'-0"	7'-0"	--	B	HM	PT	--	--	3
106	3	WD-SC	NAT	3'-0"	7'-0"	1 3/4"	B	WD	PT	HW-2	--	4
107	2	WD-SC	NAT	3'-0"	7'-0"	1 3/4"	B	HM	PT	HW-3	--	
108	6	WD-SC	NAT	3'-0"	7'-0"	1 3/4"	B	HM	PT	HW-4	--	
109	2	WD-SC	NAT	3'-0"	7'-0"	1 3/4"	B	HM	PT	HW-5	--	
110	5	WD-SC	NAT	3'-0"	7'-0"	1 3/4"	B	HM	PT	HW-4	--	
111	2	WD-SC	NAT	3'-0"	7'-0"	1 3/4"	B	HM	PT	HW-4	--	
112	6	WD-SC	NAT	3'-0"	7'-0"	1 3/4"	B	HM	PT	HW-4	--	
113	2	WD-SC	NAT	3'-0"	7'-0"	1 3/4"	B	HM	PT	HW-4	--	
114	6	WD-SC	NAT	3'-0"	7'-0"	1 3/4"	B	HM	PT	HW-4	--	
115	6	WD-SC	NAT	3'-0"	7'-0"	1 3/4"	B	HM	PT	HW-4	--	
116	NOT USED	--	--	--	--	--	--	--	--	--	--	
117	4	WD-SC	NAT	3'-0"	7'-0"	1 3/4"	B	WD	PT	HW-6	--	5
118	2	WD-SC	NAT	3'-0"	7'-0"	1 3/4"	B	HM	PT	HW-4	--	
119	3	WD-SC	NAT	3'-0"	7'-0"	1 3/4"	B	WD	PT	HW-2	--	4
120	--	--	--	3'-0"	7'-0"	--	B	HM	PT	--	--	3
121	5	WD-SC	NAT	3'-0"	7'-0"	1 3/4"	B	HM	PT	HW-4	--	
122	--	--	--	3'-0"	7'-0"	--	B	HM	PT	--	--	3
123	2	WD-SC	NAT	3'-0"	7'-0"	1 3/4"	B	HM	PT	HW-4	--	
124	2	WD-SC	NAT	3'-0"	7'-0"	1 3/4"	B	HM	PT	HW-4	--	
125	2	WD-SC	NAT	3'-0"	7'-0"	1 3/4"	B	HM	PT	HW-4	--	
126	5	WD-SC	NAT	3'-0"	7'-0"	1 3/4"	B	HM	PT	HW-4	--	
127	2	WD-SC	NAT	3'-0"	7'-0"	1 3/4"	B	HM	PT	HW-5	--	
128	2	WD-SC	NAT	3'-0"	7'-0"	1 3/4"	B	HM	PT	HW-5	--	
129	NOT USED	--	--	--	--	--	--	--	--	--	--	
130	5	WD-SC	NAT	3'-0"	7'-0"	1 3/4"	B	HM	PT	HW-4	--	
131	2	HM	PT	3'-0"	6'-8"	1 3/4"	B	HM	PT	HW-7	--	3
132	5	WD-SC	NAT	3'-0"	7'-0"	1 3/4"	B	HM	PT	HW-4	--	
133	5	WD-SC	NAT	3'-0"	7'-0"	1 3/4"	B	HM	PT	HW-4	--	
134	2	WD-SC	NAT	3'-0"	7'-0"	1 3/4"	B	HM	PT	HW-4	45 MIN.	
135	2	WD-SC	NAT	3'-0"	7'-0"	1 3/4"	B	HM	PT	HW-4	--	
136	2	WD-SC	NAT	3'-0"	7'-0"	1 3/4"	B	HM	PT	HW-4	--	

**MATERIAL/FINISH ABBREVIATIONS**

EXG EXISTING  
 FF FACTORY FINISH  
 NAT NATURAL FINISH  
 PT PAINT  
 SC SOLID CORE  
 WD WOOD

**HARDWARE**

HW-1 3 HINGES  
 1 PUSH-PULL SET  
 1 POWER OPERATOR  
 1 SET WEATHERSTRIP  
 1 THRESHOLD  
 HW-2 1 SET POCKET DOOR HARDWARE  
 HW-3 3 HINGES  
 1 PASSAGE SET  
 1 STOP  
 3 SILENCERS  
 HW-4 3 HINGES  
 1 LOCK SET  
 1 STOP  
 3 SILENCERS  
 HW-5 3 HINGES  
 1 PRIVACY SET  
 1 STOP  
 3 SILENCERS  
 HW-6 1 SET BIFOLD DOOR HARDWARE  
 HW-7 3 HINGES  
 1 EXIT DEVICE  
 1 CLOSER  
 1 SET WEATHERSTRIP  
 1 THRESHOLD

**NOTES**

1. PROVIDE POWER OPERATOR AT EXISTING DOOR.
2. MATCH EXISTING STOREFRONT SYSTEM.
3. HM CASING FRAME
4. POCKET DOOR. WOOD JAMBS AND CASINGS.
5. BIFOLD DOOR. WOOD JAMBS AND CASINGS.
6. INSULATED DOOR & FRAME

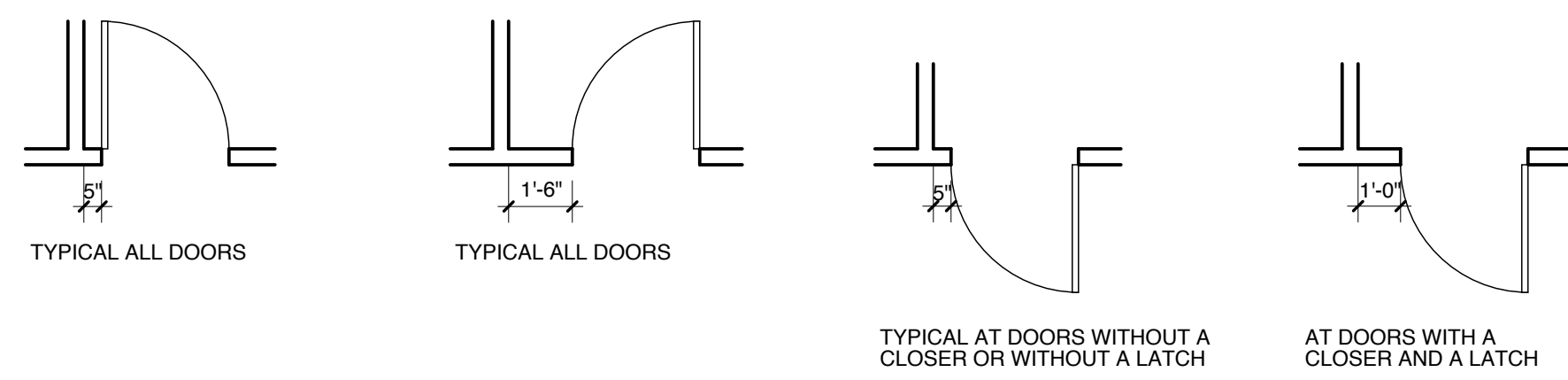
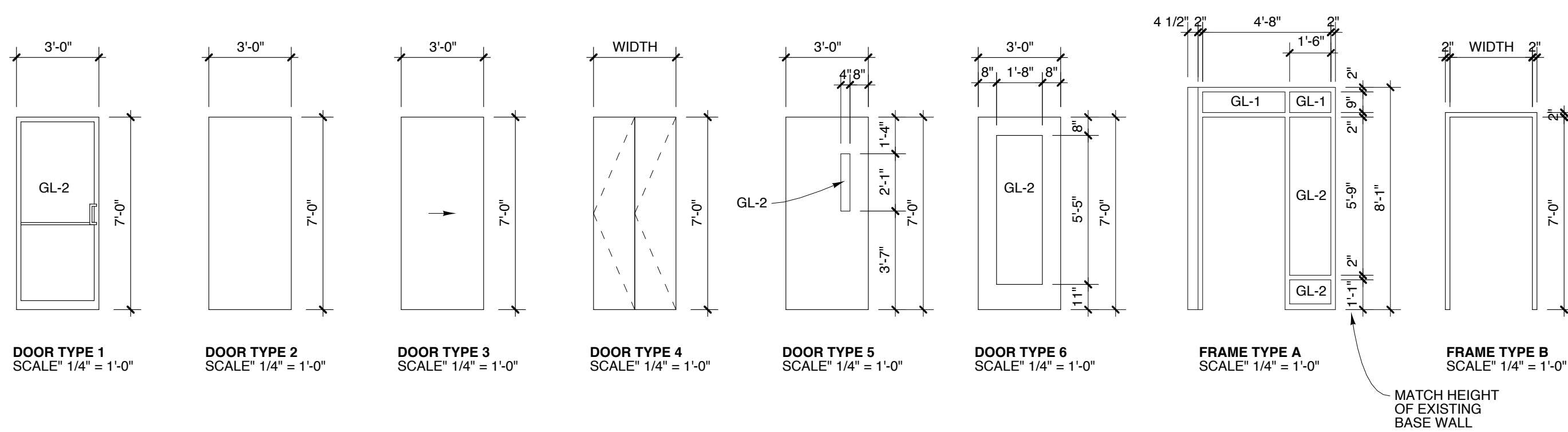
ROOM FINISH SCHEDULE									
NO.	NAME	FLOORS	BASE	WALLS	TRIM	CEILING	MAT.	NOTES	
101	VESTIBULE	MAT	VB2	PT	PT	9'-0"	ACT		
102	WAITING	CPT1	VB1	PT	PT	10'-0"	ACT	4	
103	OPTICAL	CPT1	VB1	PT	PT	10'-0"	ACT	4	
104	OPTICAL	CPT1	VB1	PT	PT	10'-0"	ACT		
105	LAB	PLK	VB2	PT	PT	9'-0"	ACT		
106	STORAGE	PLK	VB2	PT	PT	9'-0"	ACT		
107	STORAGE	PLK	VB2	PT	PT	9'-0"	ACT		
108	CL TRAINING	PLK	VB1	PT	PT	9'-0"	ACT		
109	TOILET	PLK	VB1	PT	PT	9'-0"	ACT		
110	RECEPTION	CPT1	VB1	PT	PT	8'-6"	ACT	4	
111	OFFICE	CPT1	VB1	PT	PT	9'-0"	ACT		
112	OFFICE	CPT1	VB1	PT	PT	9'-0"	ACT		
113	STORAGE	CPT1	VB1	PT	PT	9'-0"	ACT		
114	OFFICE	CPT1	VB1	PT	PT	9'-0"	ACT		
115	OFFICE	CPT1	VB1	PT	PT	9'-0"	ACT		
116	CORRIDOR	CPT1	VB1	PT	PT	9'-0"	ACT		
117	CLOSET	CPT1	VB2	PT	PT	9'-0"	ACT		
118	STORAGE	CPT1	VB2	PT	PT	9'-0"	ACT		
119	TECH	PLK	VB2	PT	PT	9'-0"	ACT		
120	CORRIDOR	CPT1	VB1	PT	PT	9'-0"	ACT		
121	VISUAL FIELDS	CPT1	VB1	PT	PT	9'-0"	ACT		
122	CORRIDOR	CPT1	VB1	PT	PT	9'-0"	ACT		
123	EXAM	CPT2	VB1	PT	PT	9'-0"	ACT		
124	EXAM	CPT2	VB1	PT	PT	9'-0"	ACT		
125	PHOTO	CPT1	VB2	PT	PT	9'-0"	ACT		
126	PRETEST	CPT1	VB2	PT	PT	9'-0"	ACT		
127	TOILET	PLK	VB1	PT	PT	9'-0"	ACT		
128	TOILET	PLK	VB1	PT	PT	9'-0"	ACT		
129	CORRIDOR	CPT1	VB1	PT	PT	9'-0"	ACT		
130	CONFERENCE	CPT2	VB1	PT	PT	9'-0"	ACT		
131	CORRIDOR	MAT	VB1	PT	PT	9'-0"	ACT	4	
132	KITCHEN	PLK	VB2	PT	PT	9'-0"	ACT		
133	OFFICE	CPT2	VB1	PT	PT	9'-0"	ACT		
134	UTILITY	VCT	VB2	PT	PT	9'-0"	ACT	1	
135	EXAM	CPT2	VB1	PT	PT	9'-0"	ACT		
136	EXAM	CPT2	VB1	PT	PT	9'-0"	ACT		

**MATERIAL/FINISH ABBREVIATIONS**

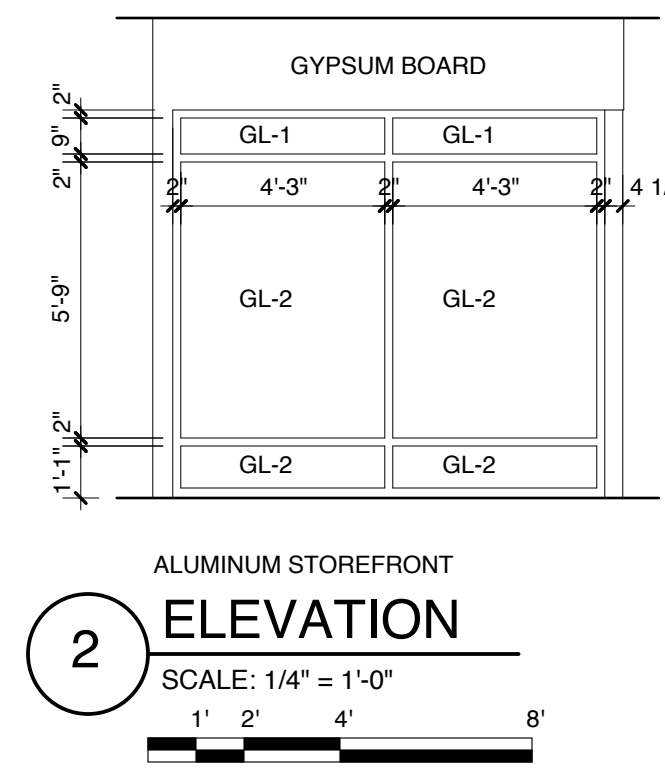
ACT ACOUSTICAL SUSPENDED CEILING  
 CPT1 PATCRAFT BIG SPLASH BROADLOOM CARPET  
 CPT2 PATCRAFT RAISE THE BAR BROADLOOM CARPET  
 MAT MATSINC MAT COLOR #86 TWEED  
 PLK PATCRAFT VINYL PLANK 1200V / 20260  
 PT PAINT - SEE COLOR PLAN FOR COLORS AND LOCATIONS  
 VB1 JOHNSONITE MILLWORK INFLECTION BASE #49 BEIGE  
 VB2 JOHNSONITE STANDARD VINYL BASE #49 BEIGE  
 VCT MANNINGTON ESSENTIALS VCT #167 ALMOND BUFF  
 VVC VINYL COVERING - SEE COLOR PLAN FOR COLORS AND LOCATIONS

**NOTES**

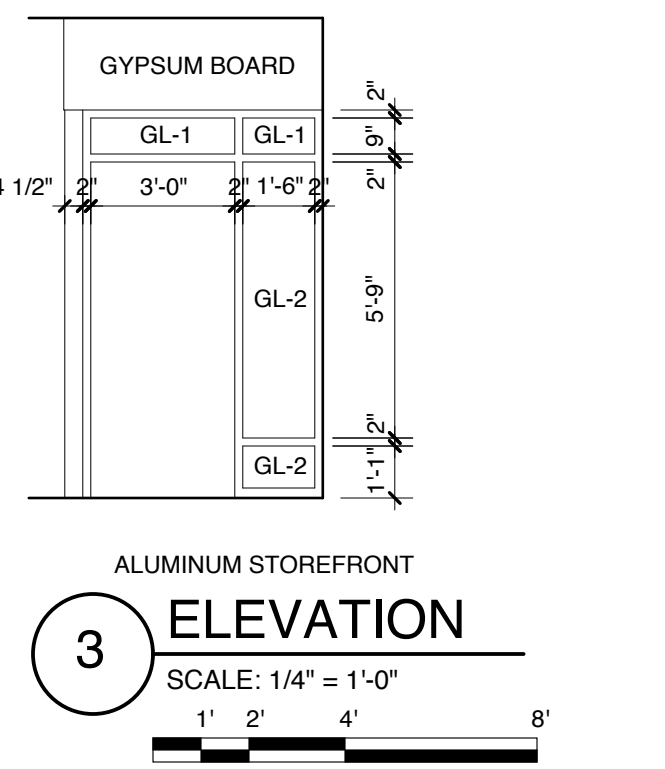
1. PROVIDE FRP ON WALL ADJACENT TO MOP SINK EXTENDING 48" ABOVE AND 12" PAST SIDES OF SINK.
2. NEW WALL AND CEILING FINISHES MUST BE CLASS A OR CLASS B IN EXIT ACCESS CORRIDORS. NEW WALL AND CEILING FINISHES MUST BE CLASS A, CLASS B, OR CLASS C IN ALL OTHER AREAS.
3. ALL CARPET MATERIALS SHALL HAVE A MINIMUM CRITICAL RADIANT FLUX OF 0.1 W / CM<sup>2</sup>
4. SEE FLOORING PLAN FOR FLOORING LAYOUT.



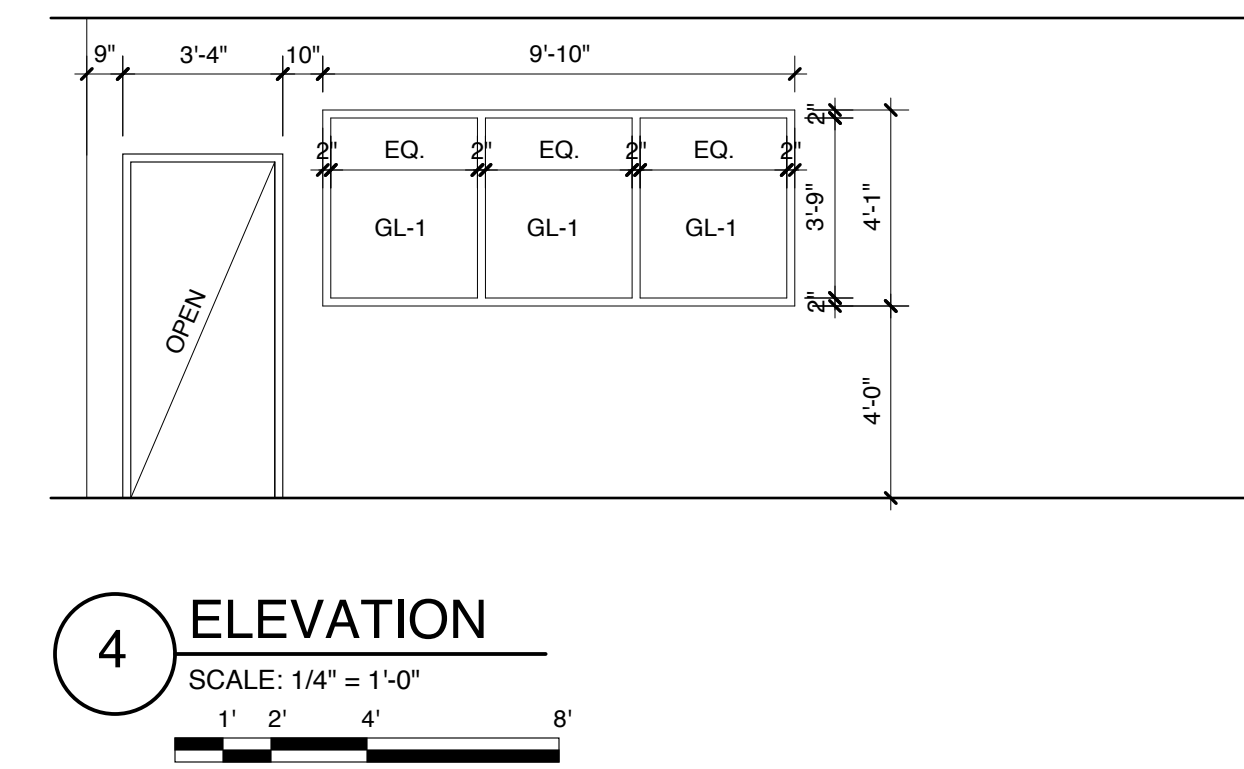
**1 TYPICAL DOOR JAMB CLEARANCES**  
 SCALE: 1/4" = 1'-0"



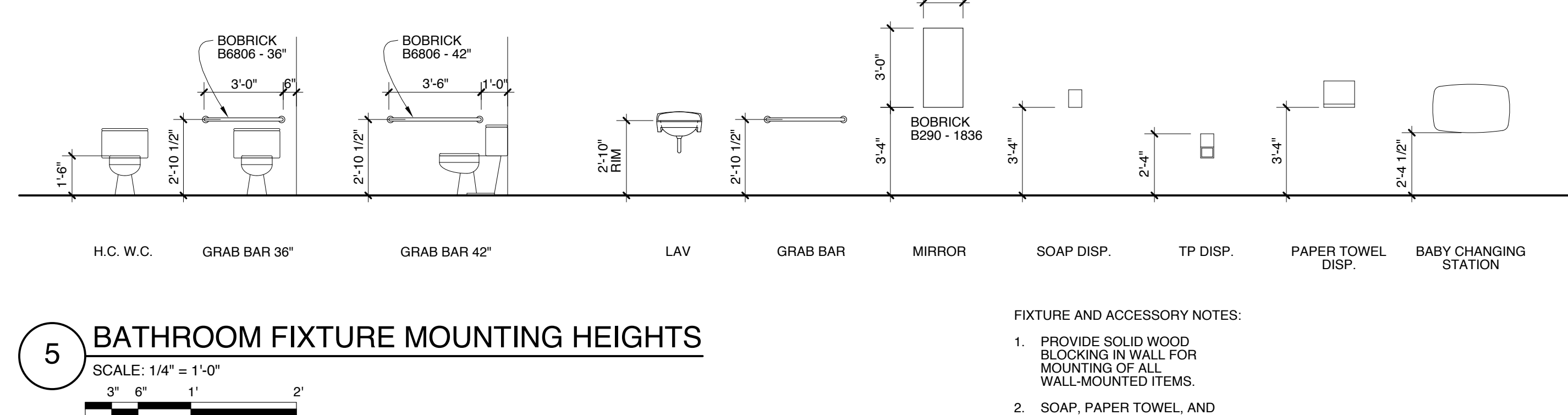
**2 ALUMINUM STOREFRONT ELEVATION**  
 SCALE: 1/4" = 1'-0"



**3 ALUMINUM STOREFRONT ELEVATION**  
 SCALE: 1/4" = 1'-0"

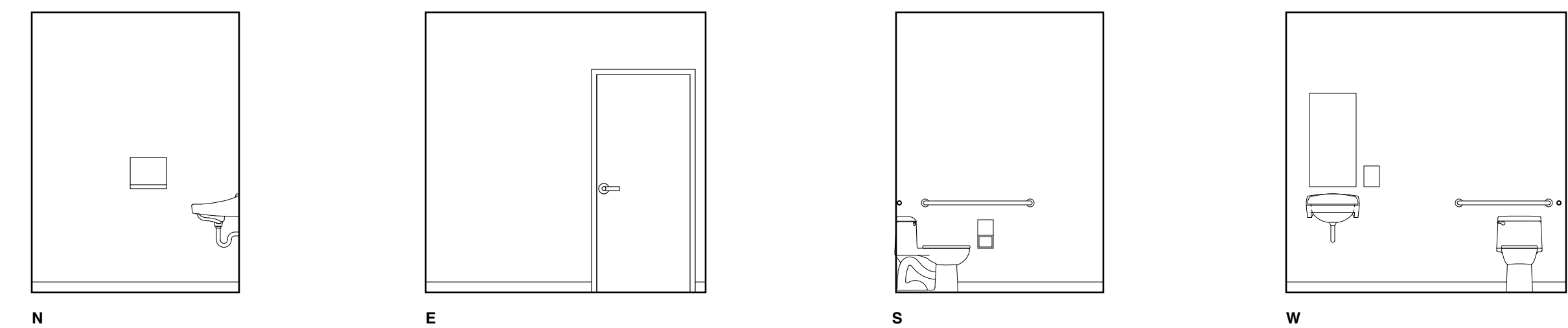


**4 ELEVATION**  
 SCALE: 1/4" = 1'-0"

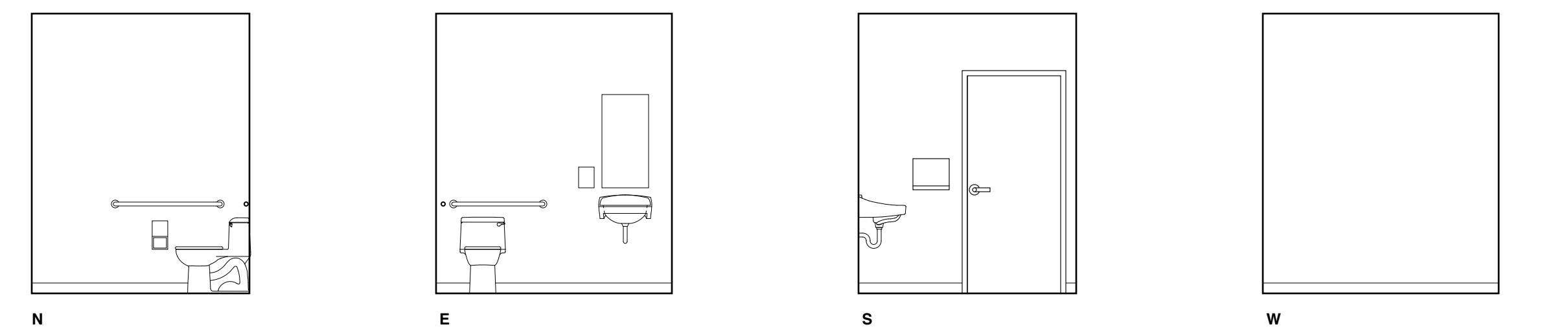


**5 BATHROOM FIXTURE MOUNTING HEIGHTS**  
 SCALE: 1/4" = 1'-0"

**FIXTURE AND ACCESSORY NOTES:**  
 1. PROVIDE SOLID WOOD BLOCKING IN WALL FOR MOUNTING OF ALL WALL-MOUNTED ITEMS.  
 2. SOAP, PAPER TOWEL, AND TOILET PAPER DISPENSERS FURNISHED BY OWNER, INSTALLED BY G.C.



**6 TOILET ROOM ELEVATIONS**  
 SCALE: 1/4" = 1'-0"



**7 TOILET ROOM ELEVATIONS**  
 SCALE: 1/4" = 1'-0"

**8 SAME BUT OPPOSITE HAND**  
 SCALE: 1/4" = 1'-0"

**Michael Charek Architects**

25 Hartley Street  
 Portland, Maine 04103  
 (207) 761-0556



**Offices for Casco Bay Eyecare**

1440 Congress Street  
 Portland, ME 04102

**Title**  
 SCHEDULES AND DETAILS

**Scale:** AS NOTED

**Date:** 5/17/16

**Revisions**  
**ISSUED FOR CONSTRUCTION**

**Sheet**  
**A3**