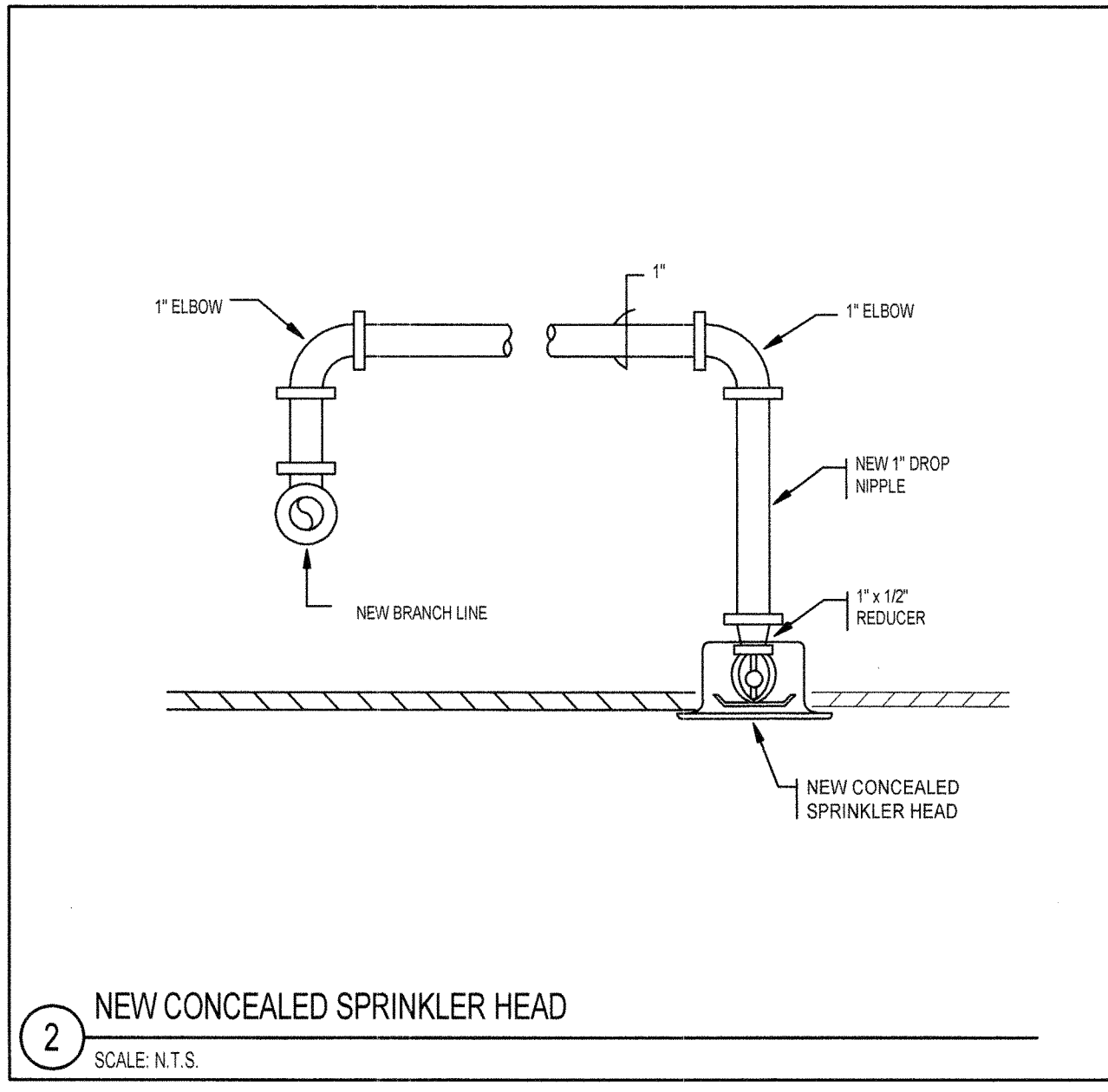
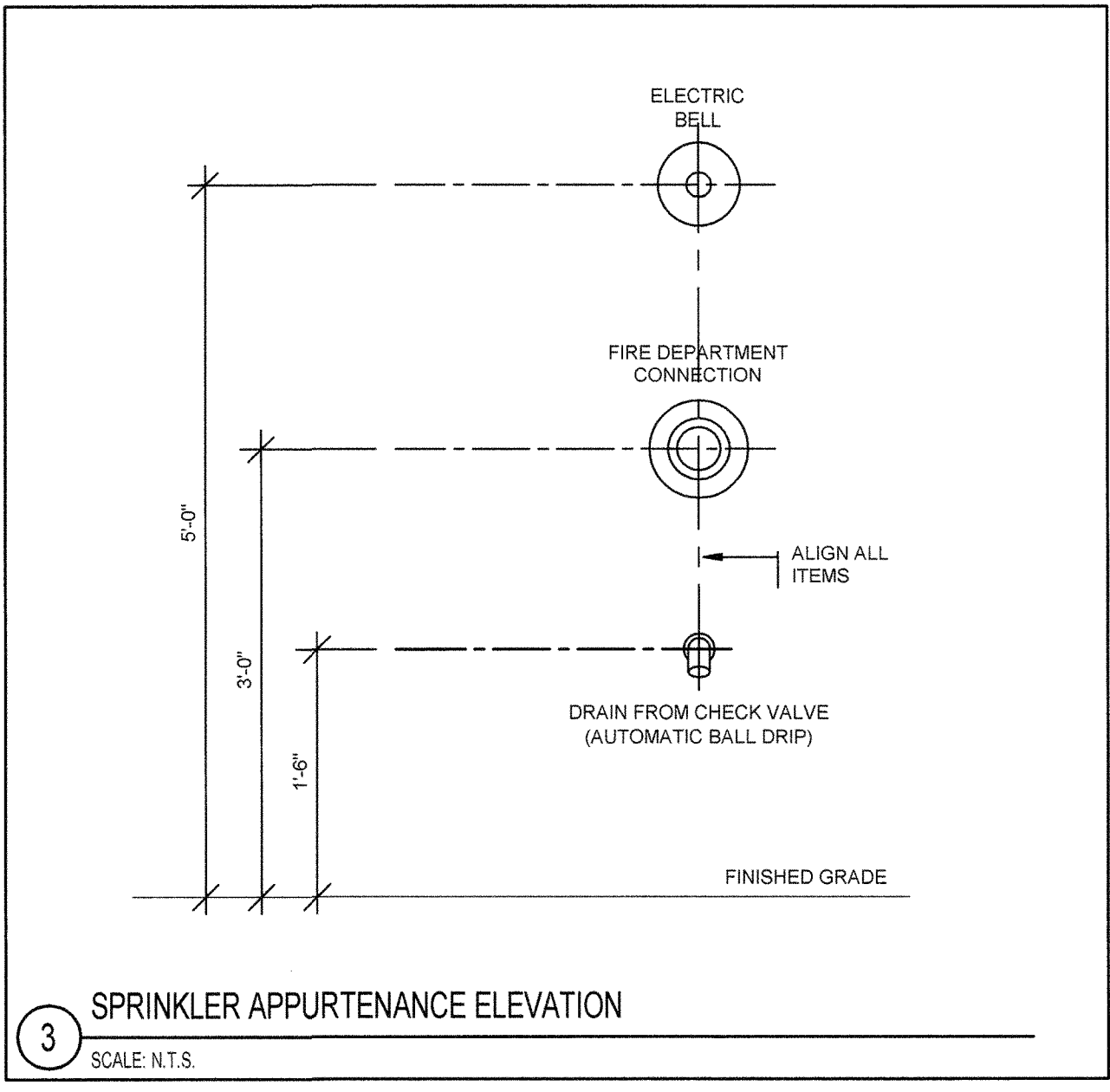


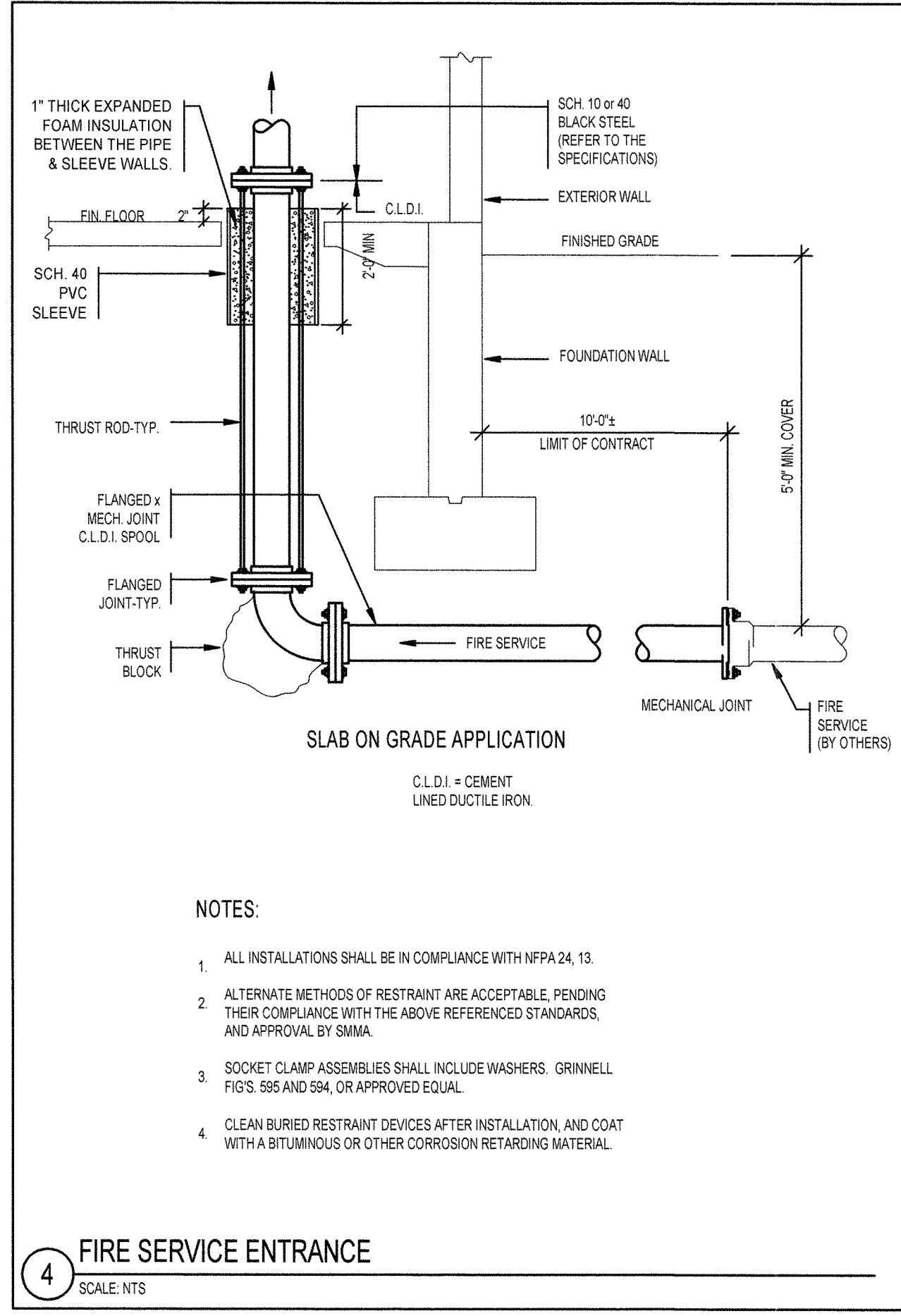
1 WET SYSTEM RISER DETAIL  
SCALE: N.T.S.



2 NEW CONCEALED SPRINKLER HEAD  
SCALE: N.T.S.

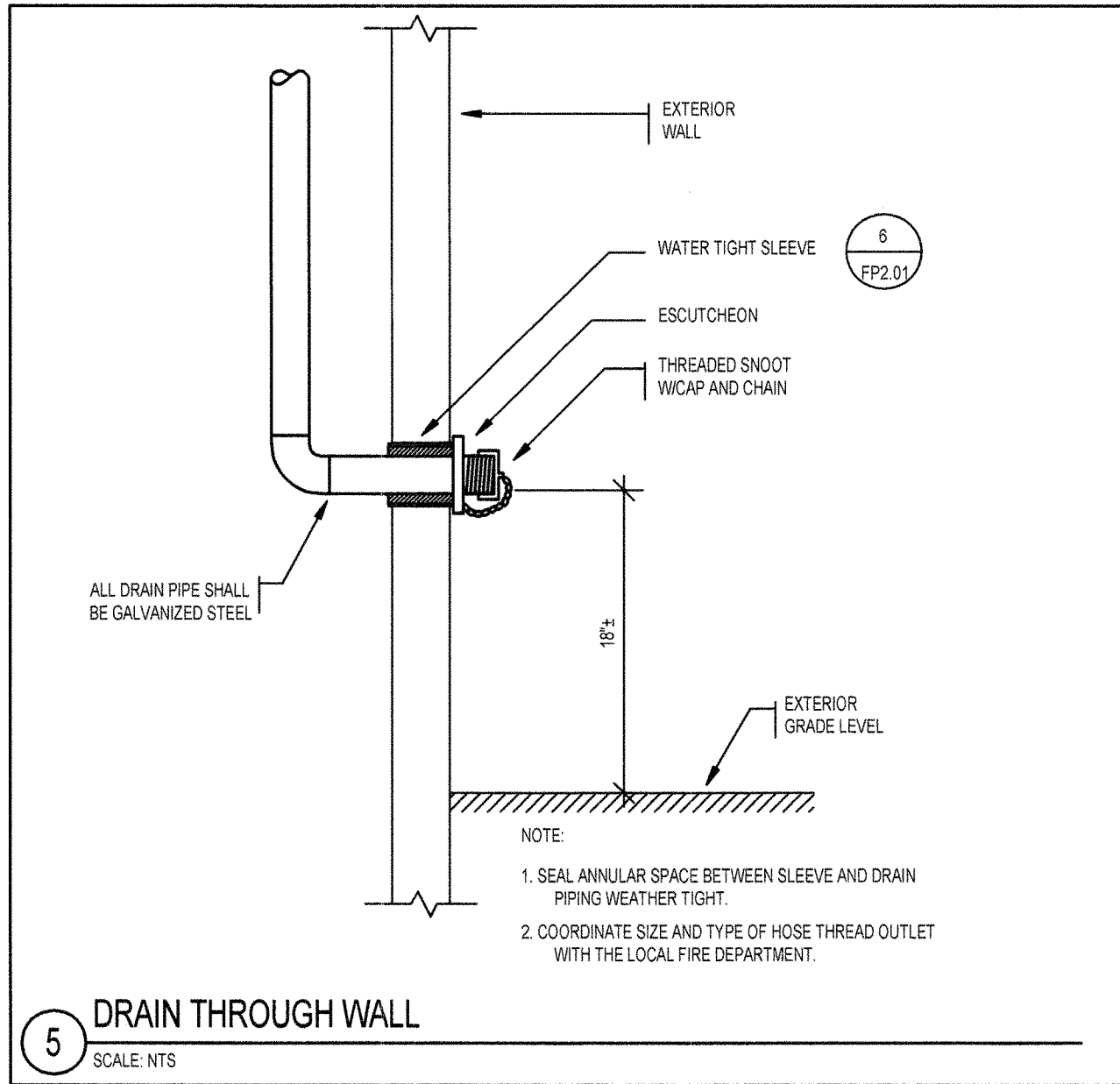


3 SPRINKLER APPURTENANCE ELEVATION  
SCALE: N.T.S.

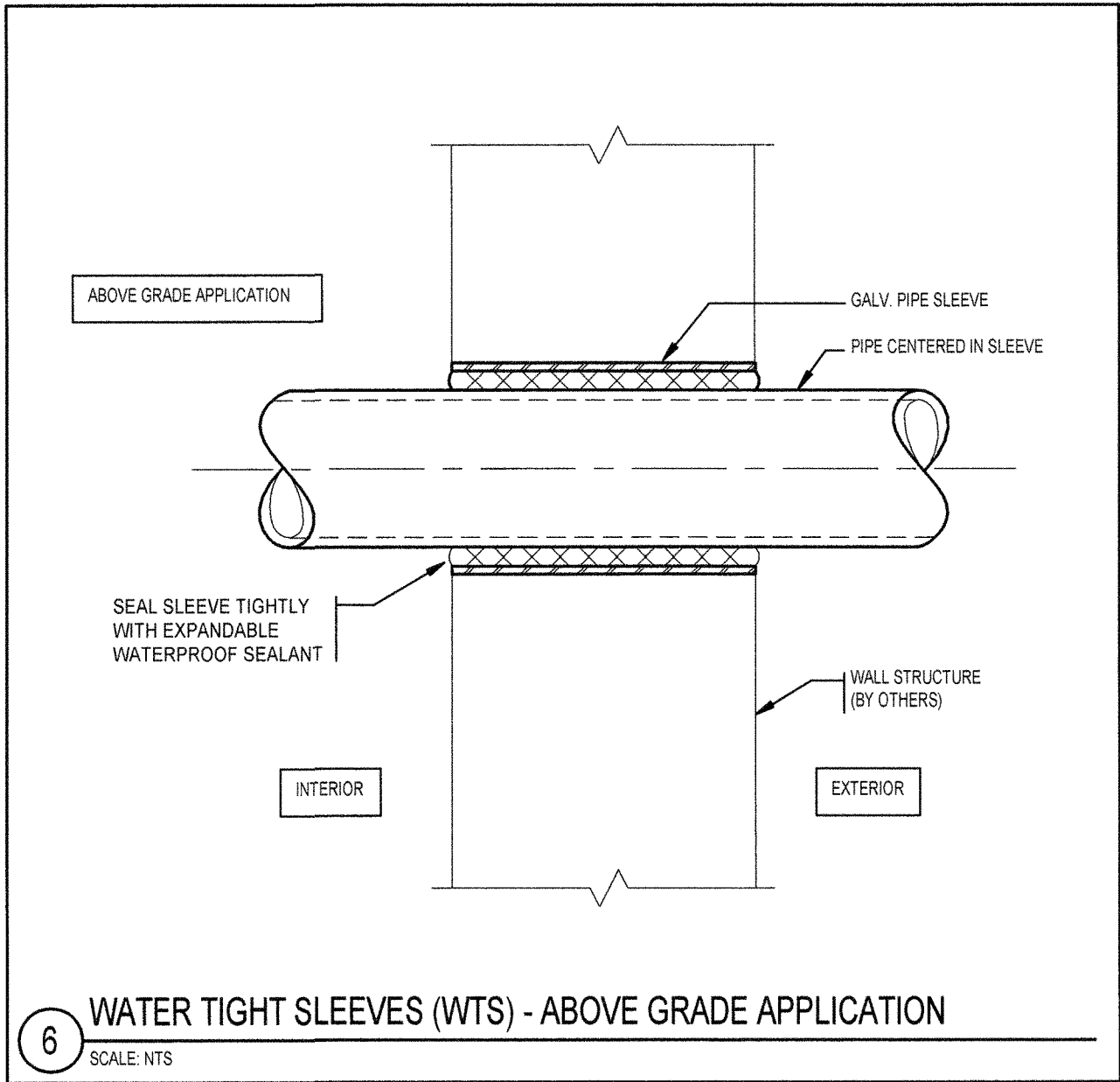


4 FIRE SERVICE ENTRANCE  
SCALE: N.T.S.

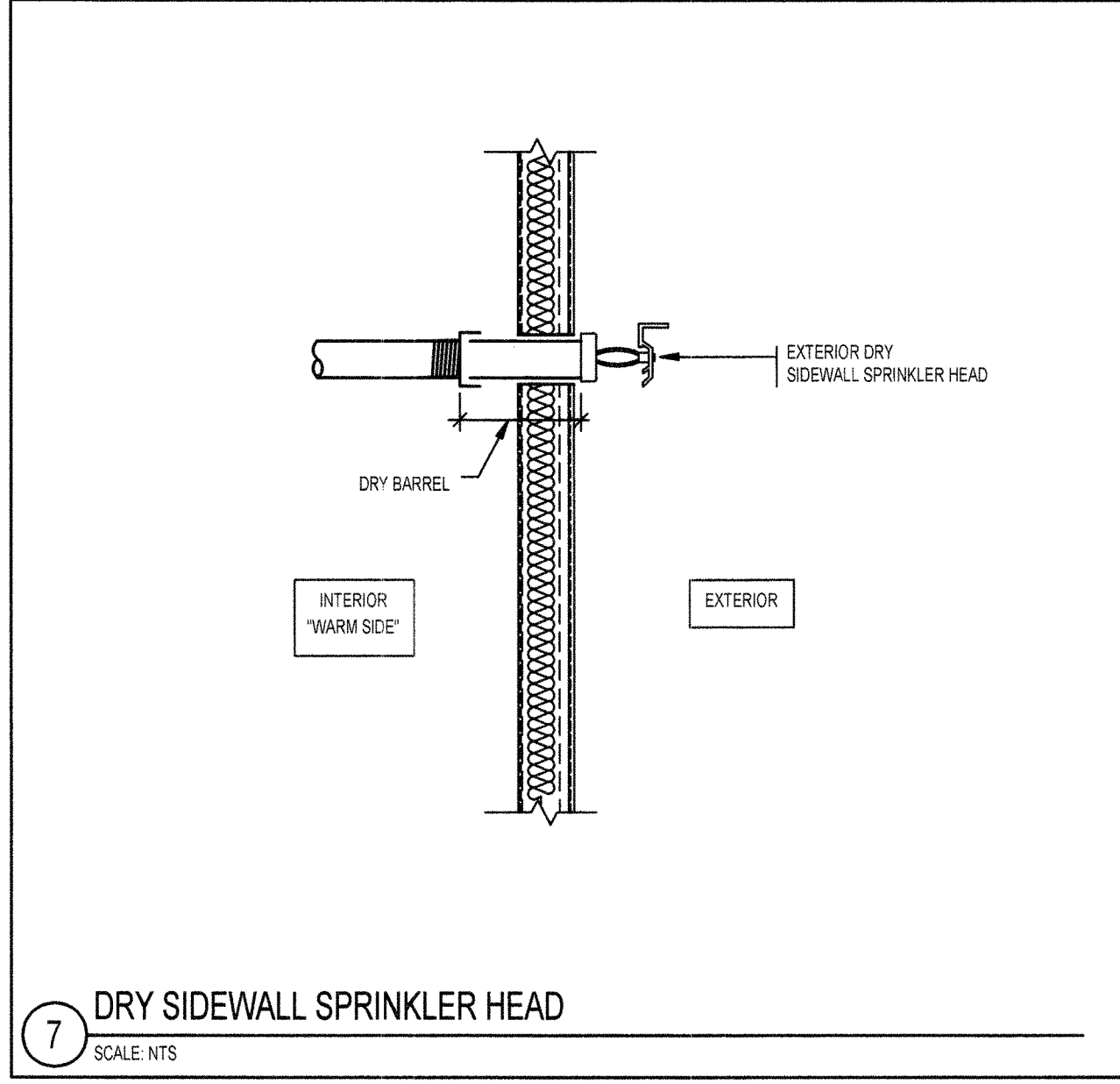
- NOTES:
1. ALL INSTALLATIONS SHALL BE IN COMPLIANCE WITH NFPA 24, 13.
  2. ALTERNATE METHODS OF RESTRAINT ARE ACCEPTABLE, PENDING THEIR COMPLIANCE WITH THE ABOVE REFERENCED STANDARDS, AND APPROVAL BY SMMA.
  3. SOCKET CLAMP ASSEMBLIES SHALL INCLUDE WASHERS, GRINNELL FIGS. 595 AND 594, OR APPROVED EQUAL.
  4. CLEAN BURIED RESTRAINT DEVICES AFTER INSTALLATION, AND COAT WITH A BITUMINOUS OR OTHER CORROSION RETARDING MATERIAL.



5 DRAIN THROUGH WALL  
SCALE: N.T.S.



6 WATER TIGHT SLEEVES (WTS) - ABOVE GRADE APPLICATION  
SCALE: N.T.S.



7 DRY SIDEWALL SPRINKLER HEAD  
SCALE: N.T.S.

OWNER REVIEW  
NAME \_\_\_\_\_ Date \_\_\_\_\_

NO.	DATE	DESCRIPTION

ISSUE LOG  
= CLOUDED CHANGE

**Banknorth**  
1410 Congress Street  
Portland, ME 04102

**DETAILS**

SCALE: N.T.S.  
DRAWN BY: MVR  
CHECK BY: TGW  
PROJ. ARCH./ENGR.: JRM/MVR  
PROJ. MRG.: PJB  
JOB NO.: 07133.01  
© SYMMES, MAINI & MCKEE ASSOCIATES, INC. 2008

FP2.01