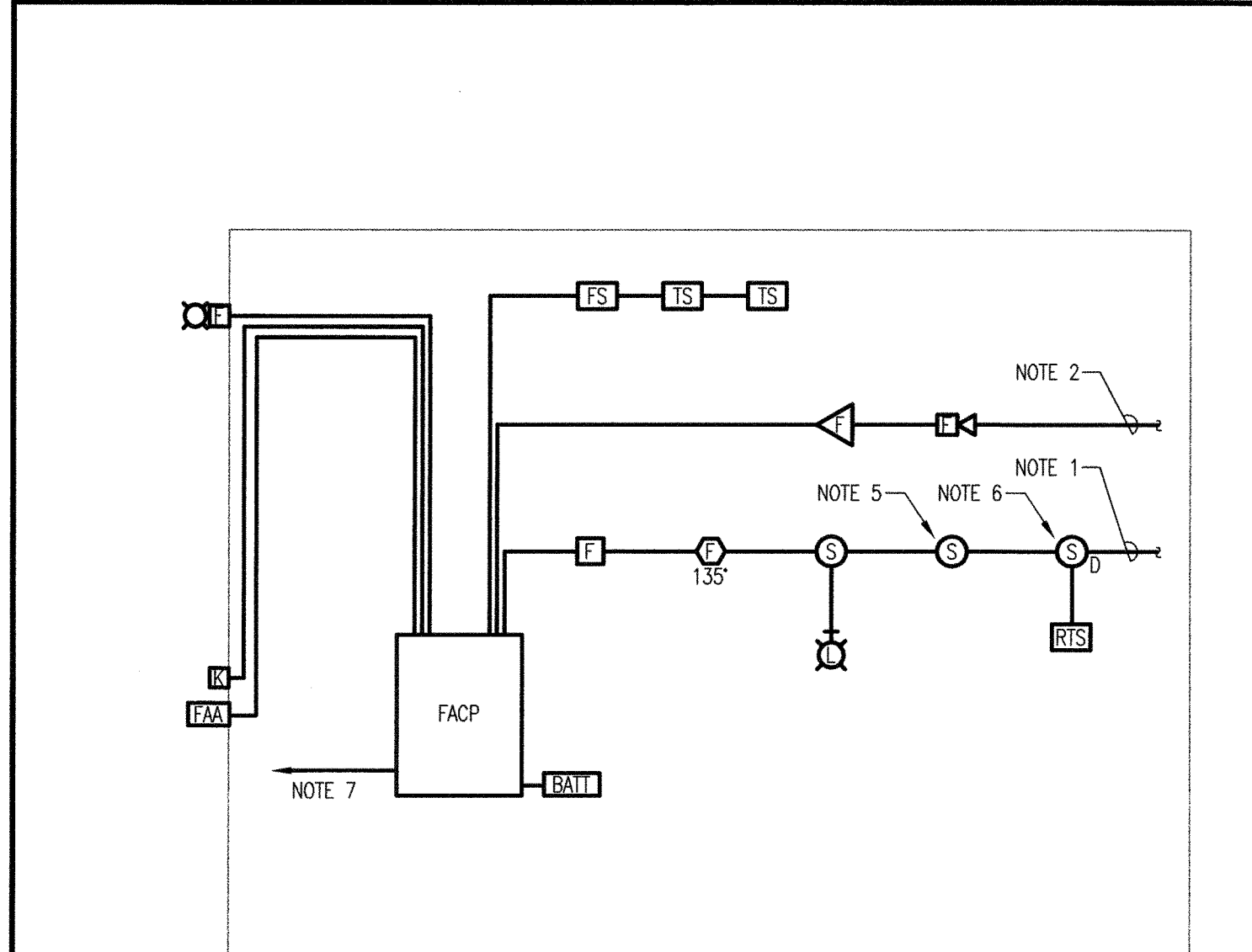
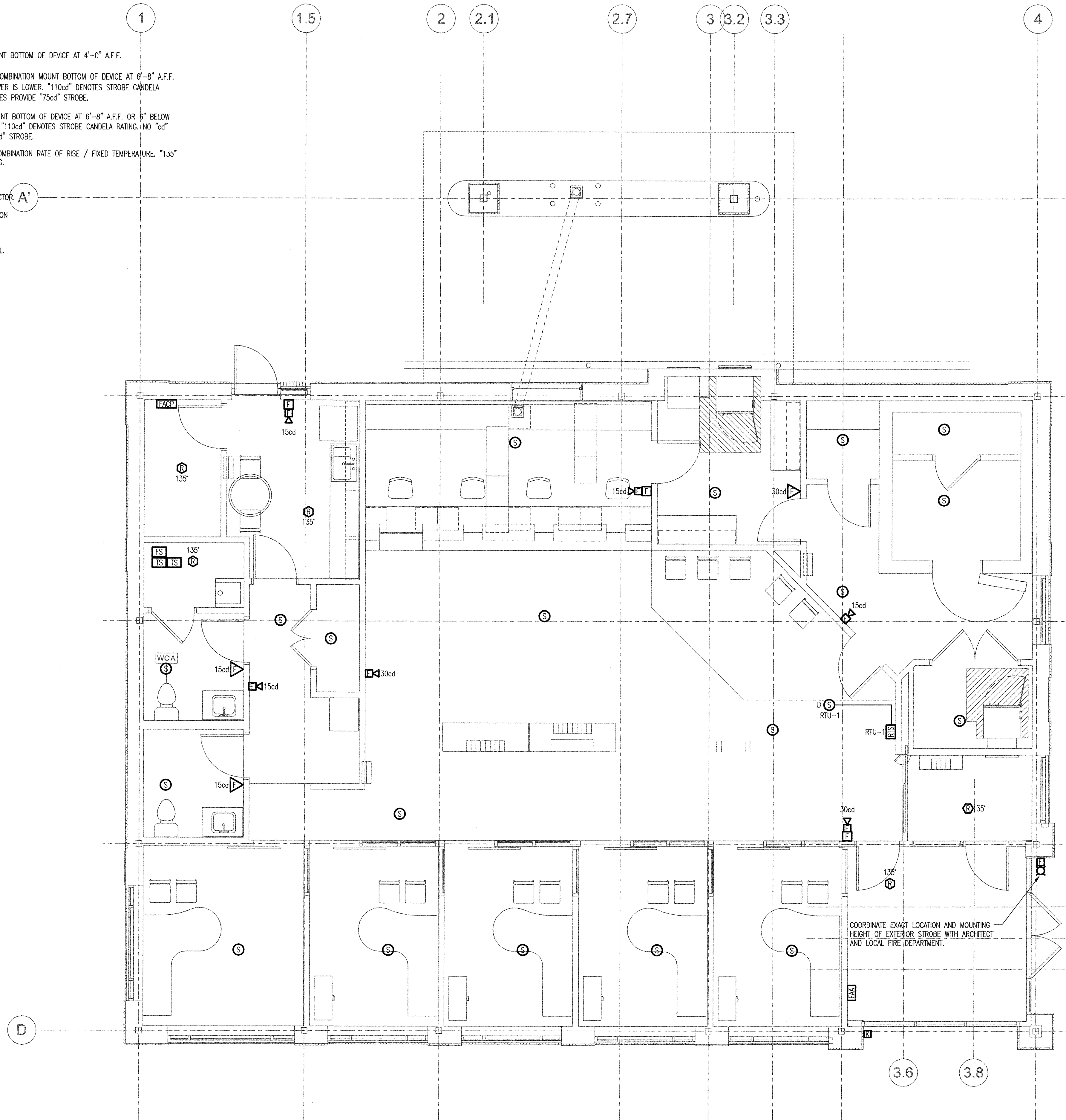


**FIRE ALARM LEGEND:**

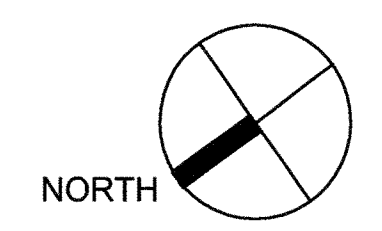
SYMBOL	DESCRIPTION
[F]	FIRE ALARM PULL STATION MOUNT BOTTOM OF DEVICE AT 4'-0" A.F.F.
110cd [H]	FIRE ALARM HORN / STROBE COMBINATION MOUNT BOTTOM OF DEVICE AT 6'-8" A.F.F. OR 6" BELOW CEILING, WHICHEVER IS LOWER. "110cd" DENOTES STROBE CANDELA RATING. NO "cd" VALUE INDICATES PROVIDE "75cd" STROBE.
110cd [S]	FIRE ALARM STROBE ONLY. MOUNT BOTTOM OF DEVICE AT 6'-8" A.F.F. OR 6" BELOW CEILING, WHICHEVER IS LOWER. "110cd" DENOTES STROBE CANDELA RATING. NO "cd" VALUE INDICATES PROVIDE "75cd" STROBE.
135° [H]	FIRE ALARM HEAT DETECTOR, COMBINATION RATE OF RISE / FIXED TEMPERATURE. "135°" INDICATES TEMPERATURE SETTING.
[S]	FIRE ALARM SMOKE DETECTOR.
[D]	FIRE ALARM DUCT SMOKE DETECTOR.
[RTS]	FIRE ALARM REMOTE TEST STATION
[FACP]	FIRE ALARM CONTROL PANEL.
[FAA]	FIRE ALARM ANNUNCIATOR PANEL.
[L]	REMOTE (LED) INDICATOR LIGHT.
[E]	EXTERIOR STROBE LIGHT.
[M]	FIRE ALARM MASTER BOX.
[K]	FIRE ALARM KEY LOCK BOX.
[TS]	FIRE ALARM TAMPER SWITCH.
[FS]	FIRE ALARM FLOW SWITCH.



**NOTES:**

- CONNECT TO REMAINING DEVICES ON DATA CABLE LOOP IN ACCORDANCE WITH EQUIPMENT SUPPLIERS APPROVED POINT TO POINT AND DEVICE ADDRESS DIAGRAMS.
- CONNECT TO REMAINING FIRE ALARM SIGNAL DEVICES IN ACCORDANCE WITH EQUIPMENT SUPPLIERS APPROVED POINT TO POINT WIRING DIAGRAMS. PROVIDE TWO CIRCUITS FOR AUDIO/VISUAL SIGNALS PER FLOOR. SIGNALS SHALL BE ALTERNATELY WIRED.
- MINIMUM SIZE CONDUIT SHALL BE 3/4" UNLESS NOTED OTHERWISE.
- SYSTEM WIRING SHALL BE INSTALLED IN ACCORDANCE WITH EQUIPMENT SUPPLIERS APPROVED SHOP DRAWINGS AND WIRING DIAGRAMS.
- CEILING MOUNTED SMOKE DETECTORS SHALL NOT BE LOCATED CLOSER THAN 3 FT. FROM AIR SUPPLY DIFFUSERS.
- AUXILIARY CONTACT TO AIR HANDLING UNIT STARTER FOR UNIT SHUTDOWN ON ALARM.
- 120V POWER TO LP1-36. PROVIDE HANDLE LOCK ON CIRCUIT BREAKER.

**1 ADDRESSABLE FIRE ALARM RISER DIAGRAM**  
REFER TO FLOOR PLAN FOR QUANTITIES AND LOCATIONS OF SYSTEM DEVICES AND EQUIPMENT.



OWNER REVIEW  
NAME \_\_\_\_\_ DATE \_\_\_\_\_

05.30.08 ISSUED FOR BID  
NO. DATE DESCRIPTION  
ISSUE LOG  
△ = CLOUDED CHANGE  
**Banknorth**  
1410 Congress Street  
Portland, ME 04102

**FIRST FLOOR PLAN  
FIRE ALARM**

SCALE 1/4" = 1'-0"  
DRAWN BY SFM  
CHECKED BY [Signature]  
PROJ. ARCH./ ENGR. SFM  
PROJ. MGR. PJB  
JOB NO. 07133.01  
© SYMMES, MAINI & MCKEE ASSOCIATES, INC. 2008

