

NOTES:
1. SEE EROSION CONTROL NOTES FOR MATERIAL, INSTALLATION AND MAINTENANCE REQUIREMENTS.

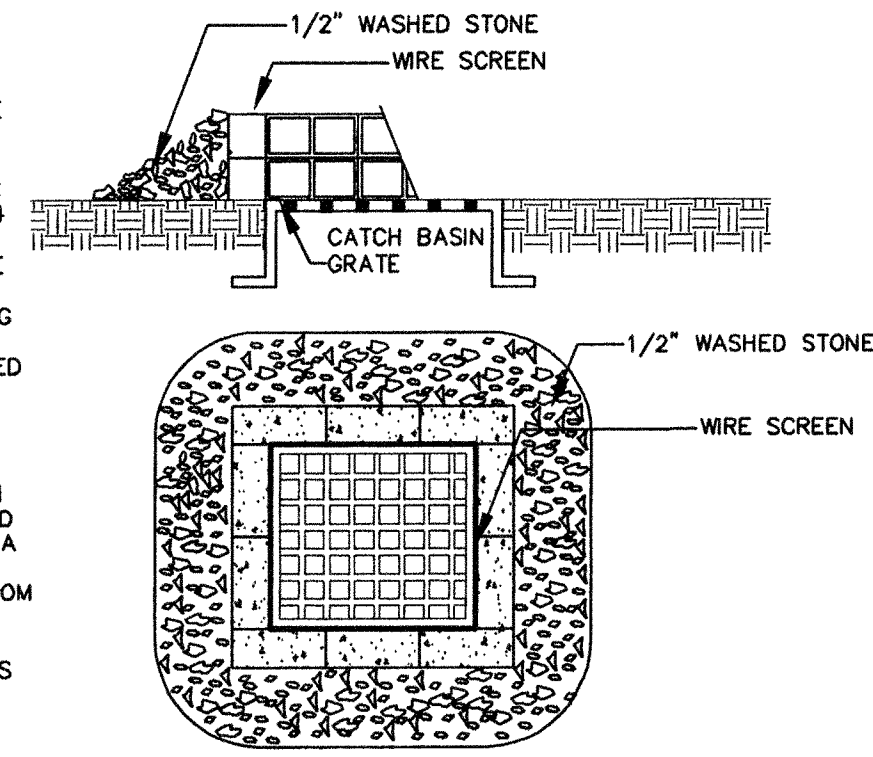
SILT FENCE
NOT TO SCALE

CONSTRUCTION SPECIFICATIONS:

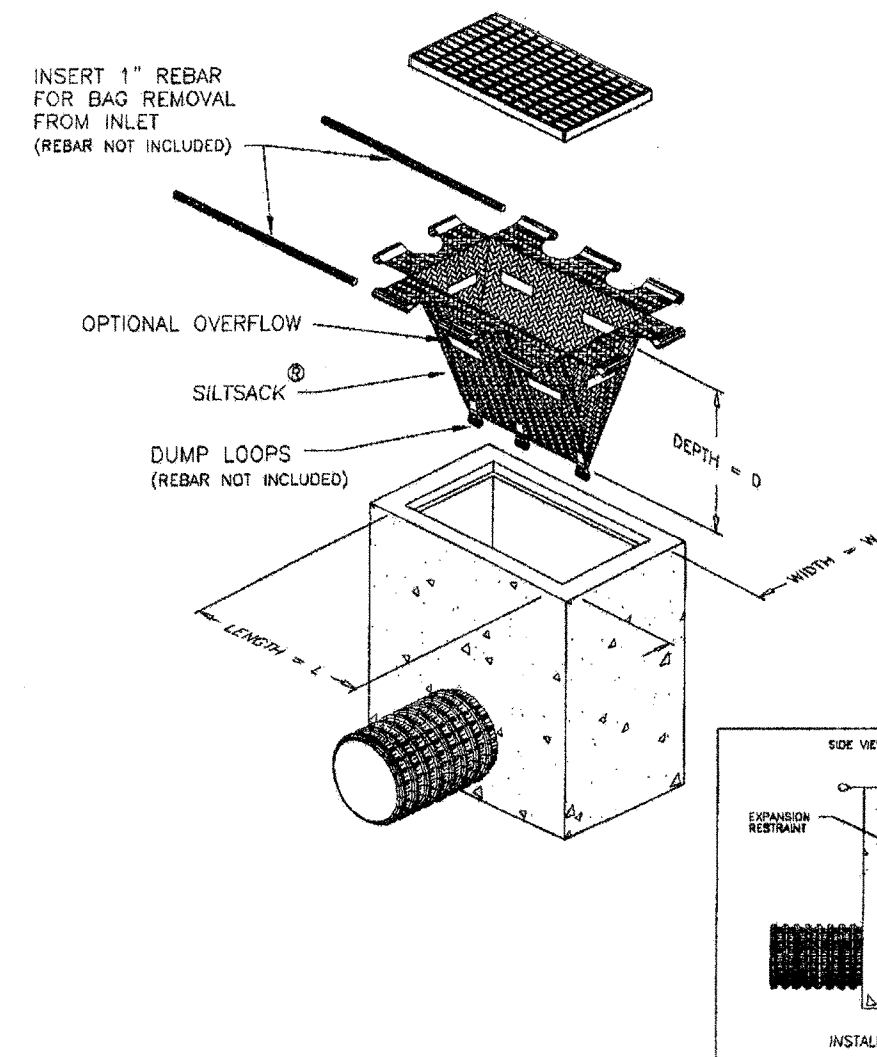
1. CONCRETE BLOCKS SHOULD BE PLACED LENGTHWISE ON THEIR SIDE IN A SINGLE ROW AROUND THE PERIMETER OF THE INLET. THE ENDS OF EACH BLOCK SHOULD BE ABUTTING. THE HEIGHT OF THE BARRIER CAN BE VARIED DEPENDING ON THE DESIGN BY STACKING VARIOUS COMBINATIONS OF DIFFERENT SIZED BLOCKS. THE BARRIER SHOULD BE A MINIMUM OF 12 INCHES HIGH AND A MAXIMUM OF 24 INCHES HIGH.
2. HARDWARE CLOTH OR WIRE MESH SHOULD BE PLACED OVER THE OPENINGS OF THE CONCRETE BLOCKS AND EXTENDED AT LEAST 12 INCHES AROUND THE OPENING TO PREVENT AGGREGATE FROM BEING TRANSPORTED THROUGH THE OPENINGS IN THE BLOCK.
3. SEWER STONE OR CLEAN COARSE AGGREGATE SHOULD BE PLACED AGAINST THE BLOCK TO THE TOP OF THE BARRIER.

MAINTENANCE:

ALL STRUCTURES SHOULD BE INSPECTED AFTER EVERY RAIN STORM AND REPAIRS MADE AS NECESSARY. SEDIMENT SHOULD BE REMOVED FROM THE TRAPPING DEVICES AFTER THE SEDIMENT HAS REACHED A MAXIMUM OF ONE HALF THE DEPTH OF THE TRAP. THE SEDIMENT SHOULD BE DISPOSED OF IN A SUITABLE AREA AND PROTECTED FROM EROSION BY EITHER STRUCTURAL OR VEGETATIVE MEANS. THE TEMPORARY TRAPS SHOULD BE REMOVED AND THE AREA REPAIRED AS SOON AS THE CONTRIBUTING DRAINAGE AREA TO THE INLET HAS BEEN COMPLETELY STABILIZED.



INLET PROTECTION BARRIER
NOT TO SCALE



SILT SACK

- A. SACK SHALL BE INSTALLED WITHIN CATCHBASIN, MAKING SURE EMPTY STRAPS ARE LAID FLAT OUTSIDE THE BASIN.
- B. SACK SHALL FIT TIGHTLY WITHIN THE BASIN TO PREVENT SEDIMENT FROM GOING THROUGH ANY GAPS.
- C. ALL STRUCTURES SHOULD BE INSPECTED AFTER EVERY RAINSTORM AND REPAIRS MADE AS NECESSARY.
- D. SEDIMENT SHOULD BE REMOVED FROM THE DEVICES AFTER THE SEDIMENT HAS REACHED MAXIMUM OF ONE-THIRD THE DEPTH OF THE TRAP.
- E. SILT SACK SHALL BE REMOVED UPON THE COMPLETION OF PROJECT.

NOTES:

1. COORDINATE INLET PROTECTION WITH APPROVED MANUFACTURER AND SITE ENGINEER.
2. SILT SACKS SHALL BE USED IN CATCHBASIN WHERE PATH IS WITHIN VEHICULAR TRAVEL WAY.

SILT SACK
NOT TO SCALE

No.	Description	Appd	Date
REVISIONS			

DATE: JUNE 23, 2008
SCALE: AS SHOWN
DESIGNED BY: BLM/GY
DRAWN BY: SAM
APPROVED BY: BLM
PROJECT NO: 2256
FILE NO: 2256-CDETAILS-BANK

**TD BANKNORTH
CONGRESS STREET
PORTLAND, ME**

APPLEDORE ENGINEERING
177 CORPORATE DRIVE
PORTSMOUTH, NEW HAMPSHIRE 03801
(603) 433-8818
ae@appledoreeng.com