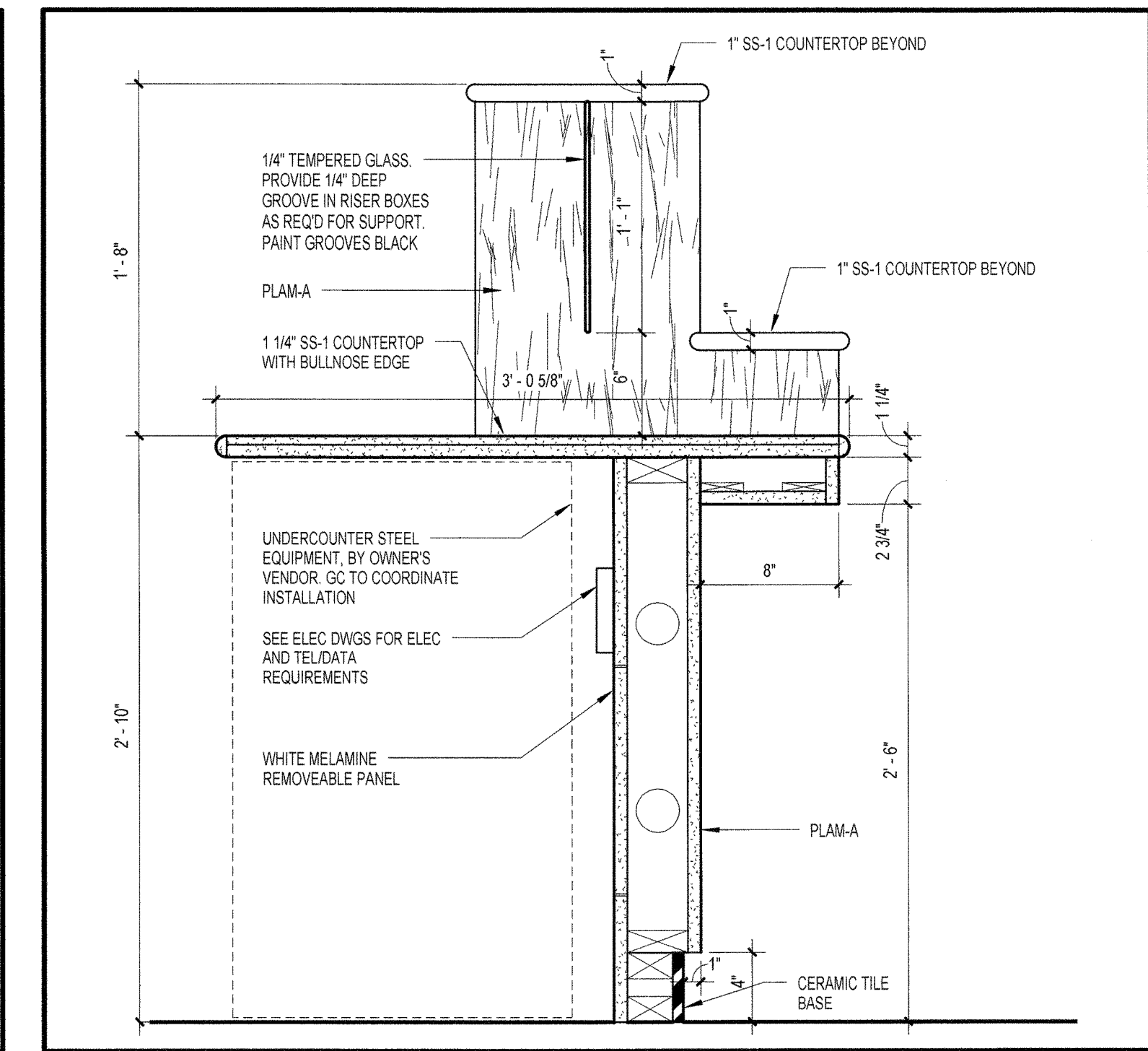
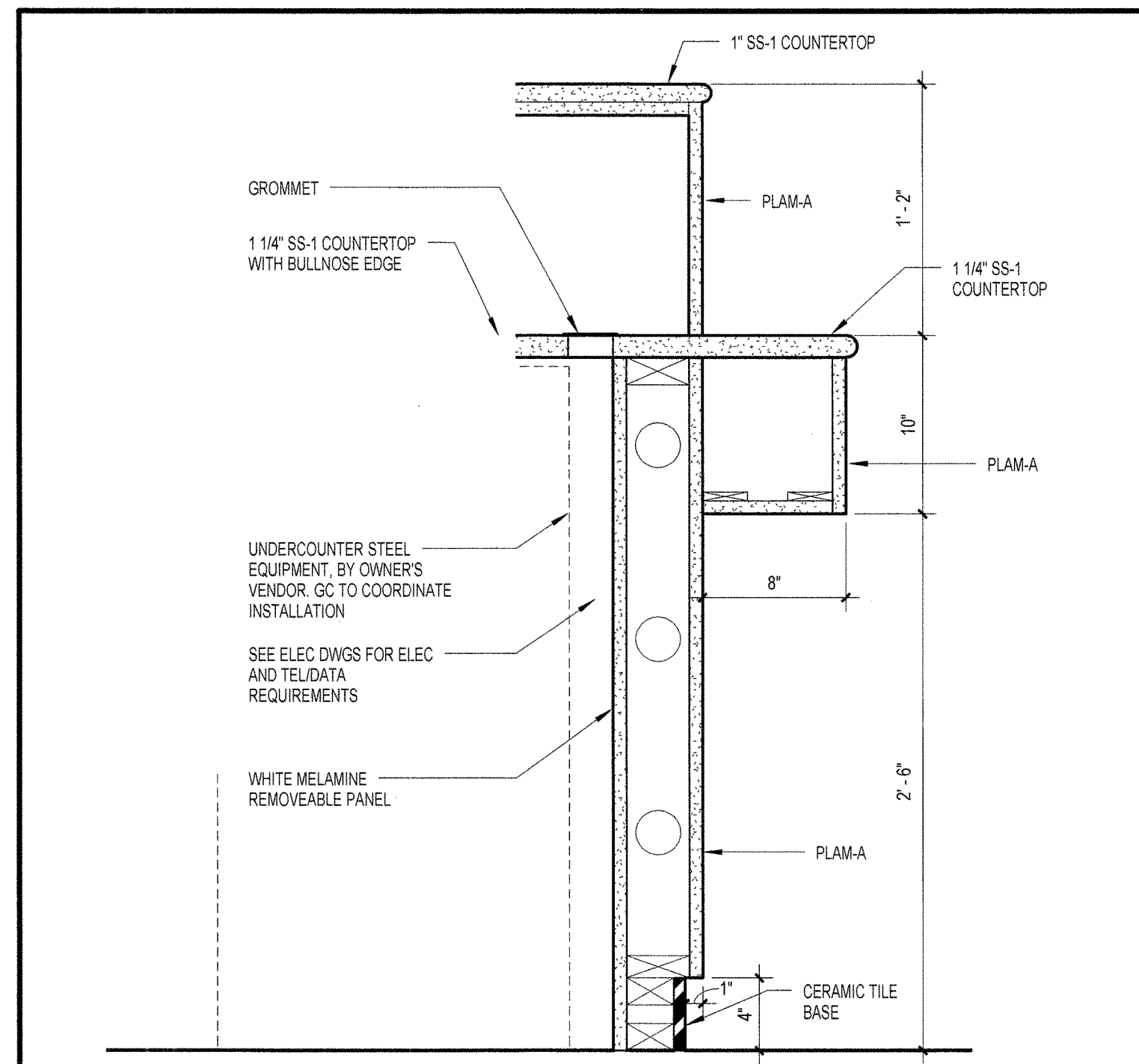


OWNER REVIEW

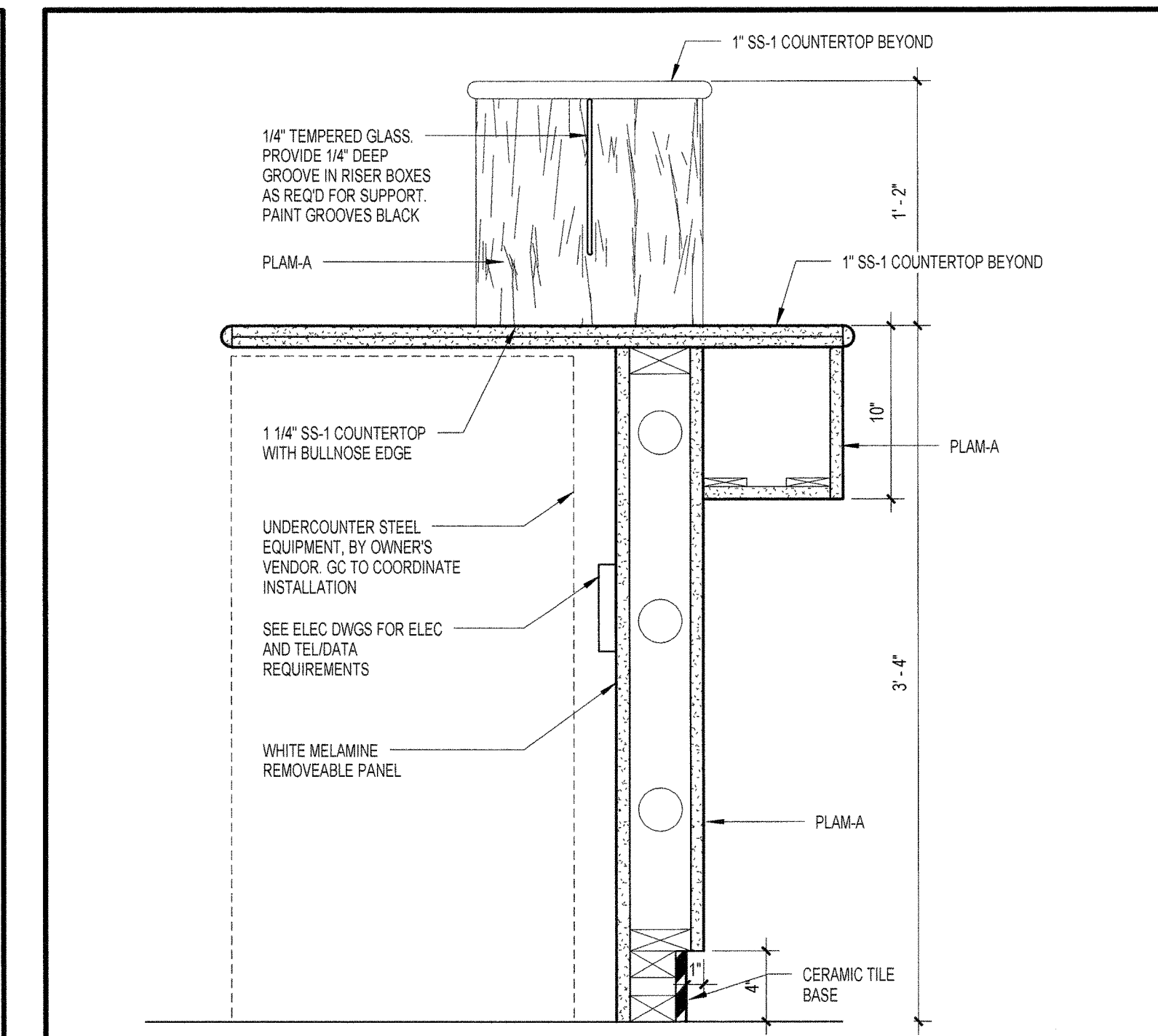
NAME _____ Date _____



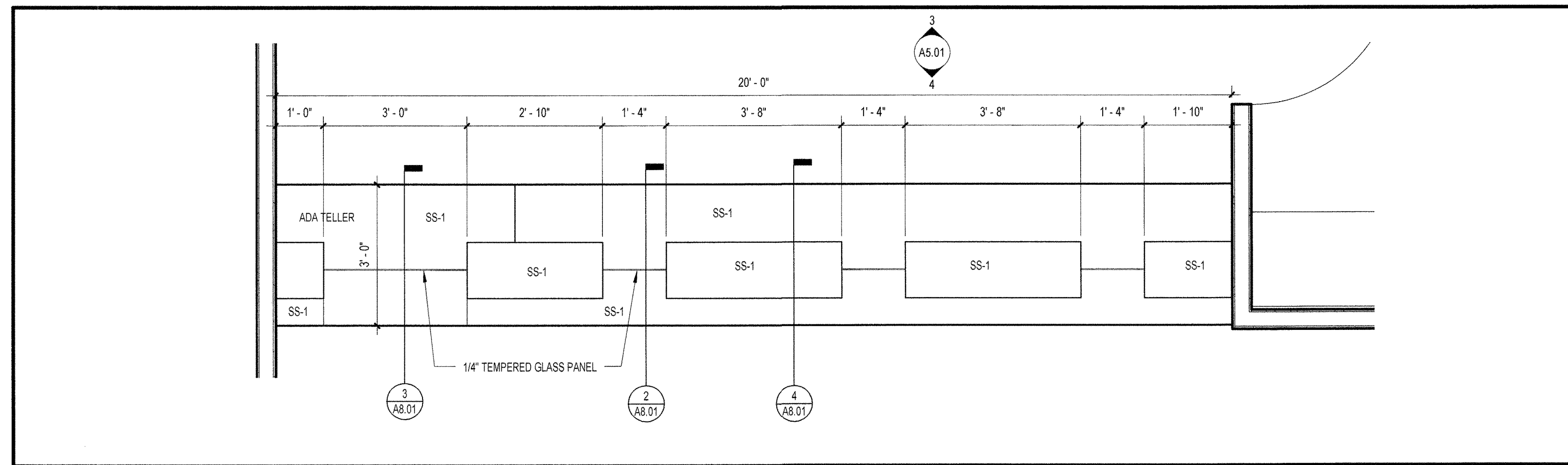
SECTION AT ADA TELLER STATION
1 1/2" = 1'-0"



SECTION THROUGH COUNTER AT TELLER STATION
1 1/2" = 1'-0"



SECTION THROUGH WINDOW AT TELLER STATION
1 1/2" = 1'-0"



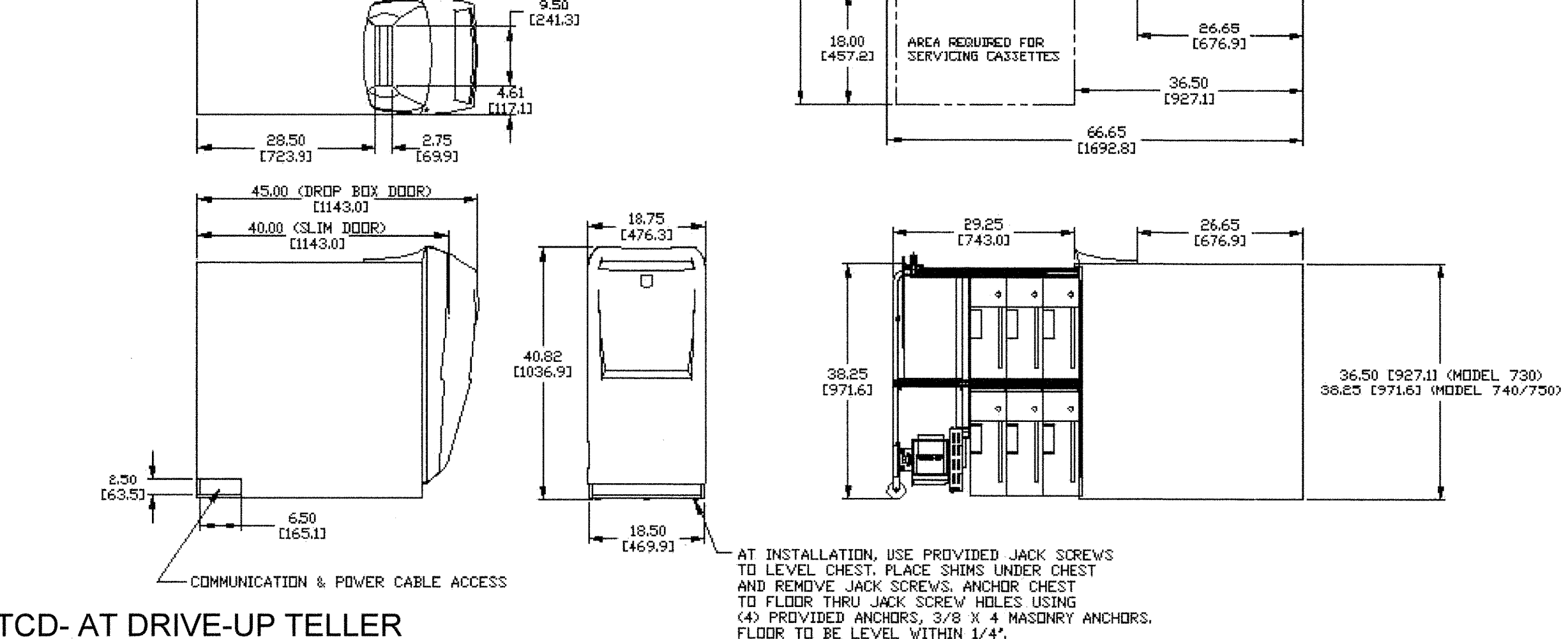
PLAN AT TELLER STATIONS
1/2" = 1'-0"

REV	ACTIVITY	RELEASE	PROCESSED BY / DATE	UNLESS OTHERWISE SPECIFIED: DIMENSIONS ARE IN INCHES AND DECIMALS ARE AS FOLLOWS: 1/8\"	<p>DE LA RUE CASH SYSTEMS WATER TOWN VT USA</p>	DRAWN BY / DATE	SHEET	ITEM NO.
1	REL	0042888	MP	11/21/02		MP	1 of 1	0042888
2	PCD	09-0426	CAV/12-JAN-02			CHECKED BY / DATE		
3	PCD	05-0161	DG/11-MAY-05			APPROVED BY / DATE		
				ITEM DESCRIPTION	DWG. NO.	DWG. SIZE	EXP. NO.	
				DRAWING, INSTALL TCD 730,740,750	NONE	C	NONE	
				CAD FILE: U:\TCD INSTALL\0042888-01	CONFIDENTIAL PROPRIETARY INFORMATION			
				DRAWING IS PREPARED IN ACCORDANCE WITH ANSI "ENGINEERING DRAWING AND RELATED DOCUMENTATION PRACTICES"				

SPECIFICATIONS

1. INSTALLATION OF TCD SHOULD BE DONE BY QUALIFIED DELARUE TRAINED PERSONNEL.
2. PLUGGABLE EQUIPMENT, THE SOCKET-OUTLET SHALL BE INSTALLED NEAR THE EQUIPMENT AND SHALL BE EASILY ACCESSIBLE.
3. WEIGHT WITHOUT CASSETTES - APPROXIMATELY 1300 LBS.
4. OPERATING ENVIRONMENT - INDOORS
5. OPERATING TEMPERATURE - 50° - 80°F
6. OPERATING HUMIDITY - 10% - 90% NON-CONDENSING
7. POWER CORDAGE - PROVIDED WITH UL LISTED CORDAGE WITH NEMA 5-15P
8. POWER REQUIREMENTS - SPECIFIED PERFORMANCE MAINTAINED WITH INPUT POWER OF: VOLTAGE - 115 - 230VAC ± 10% SINGLE PHASE FREQUENCY - 50 - 60Hz ± 1% NOMINAL POWER RATING - 230VA MAXIMUM DROP OUT - LESS THAN 40ms
9. DELARUE APPROVED LINE CONDITIONER REQUIRED. NON-SYSTEM EQUIPMENT SHALL NOT CONNECT TO SAME CIRCUIT.

DELARUE RESERVES THE RIGHT TO CHANGE SPECIFICATIONS WITHOUT NOTICE.



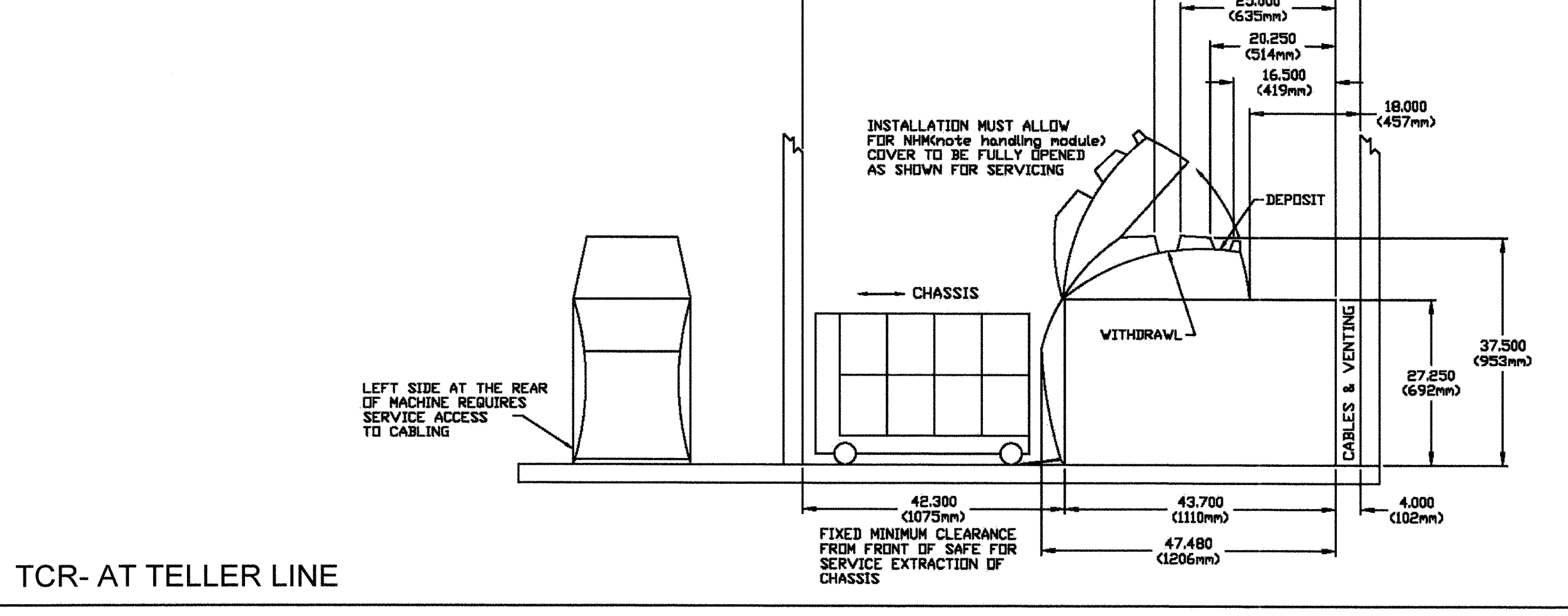
TCD- AT DRIVE-UP TELLER

REV	ACTIVITY	RELEASE	PROCESSED BY / DATE	UNLESS OTHERWISE SPECIFIED: DIMENSIONS ARE IN INCHES AND DECIMALS ARE AS FOLLOWS: 1/8\"	<p>DE LA RUE CASH SYSTEMS WATER TOWN VT USA</p>	DRAWN BY / DATE	SHEET	ITEM NO.
1	REL	0042880	MP	11/15/02		MP	1 of 1	0042880
				ITEM DESCRIPTION		DWG. NO.	DWG. SIZE	EXP. NO.
				DRAWING, INSTALL TCR TWIN SAFE		NONE	C	NONE
				CAD FILE: U:\TCD INSTALL\0042880-00	CONFIDENTIAL PROPRIETARY INFORMATION			
				DRAWING IS PREPARED IN ACCORDANCE WITH ANSI "ENGINEERING DRAWING AND RELATED DOCUMENTATION PRACTICES"				

SPECIFICATIONS

1. INSTALLATION OF TCR TWIN SAFE SHOULD BE DONE BY QUALIFIED DELARUE TRAINED PERSONNEL.
2. PLUGGABLE EQUIPMENT, THE SOCKET-OUTLET SHALL BE INSTALLED NEAR THE EQUIPMENT AND SHALL BE EASILY ACCESSIBLE.
3. WEIGHT WITHOUT CURRENTLY - APPROXIMATELY 1025 LBS.
4. OPERATING ENVIRONMENT - INDOORS
5. OPERATING TEMPERATURE - 50° - 80°F
6. OPERATING HUMIDITY - 20% - 70% NON-CONDENSING
7. POWER CORDAGE - PROVIDED WITH UL LISTED CORDAGE WITH NEMA 5-15P
8. POWER REQUIREMENTS - SPECIFIED PERFORMANCE MAINTAINED WITH INPUT POWER OF: VOLTAGE - 115 - 230VAC ± 10% SINGLE PHASE FREQUENCY - 50 - 60Hz ± 1% NOMINAL POWER RATING - 400VA/255W
9. DELARUE APPROVED LINE CONDITIONER REQUIRED. NON-SYSTEM EQUIPMENT SHALL NOT CONNECT TO SAME CIRCUIT.

DELARUE RESERVES THE RIGHT TO CHANGE SPECIFICATIONS WITHOUT NOTICE.



TCR- AT TELLER LINE

TELLER EQUIPMENT SPECIFICATIONS

FOR REFERENCE ONLY- EQUIPMENT TO BE SUPPLIED BY OWNER

TELLER STATION MILLWORK DETAILS

SCALE	As indicated
DRAWN BY	PG
CHECK BY	
PROJ ARCH/ENGR.	JR
PROJ. MGR.	PJB
JOB NO.	07133.01
© SYMMES, MAINI & MCKEE ASSOCIATES, INC. 2006	

