

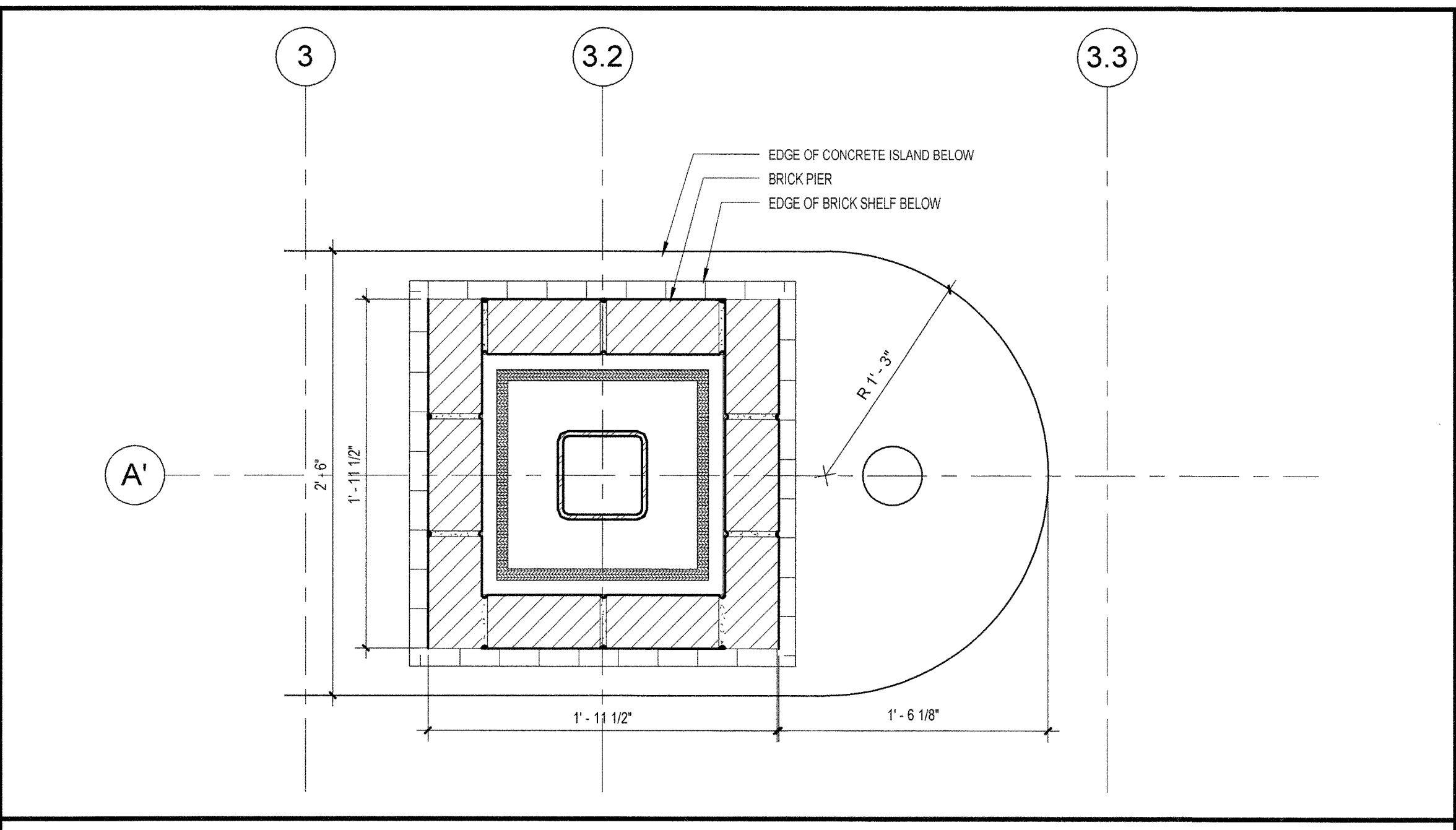
OWNER REVIEW
 NAME _____ Date _____

NO.	DATE	DESCRIPTION
5/30/08		ISSUE FOR BID

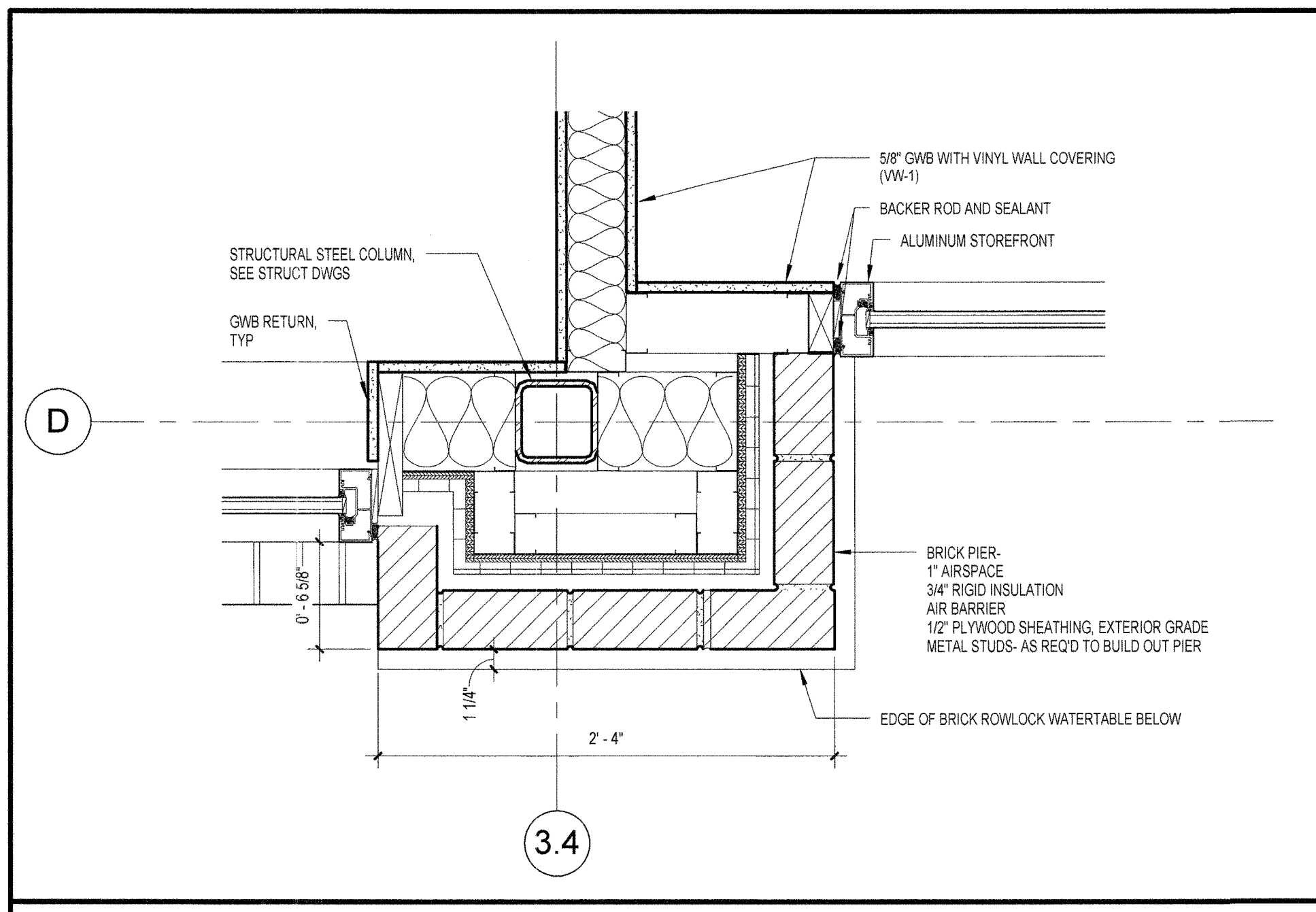
ISSUE LOG
 ▲ = CLOUDED CHANGE
TD Banknorth
 1410 Congress Street
 Portland, ME 04101

EXTERIOR DETAILS

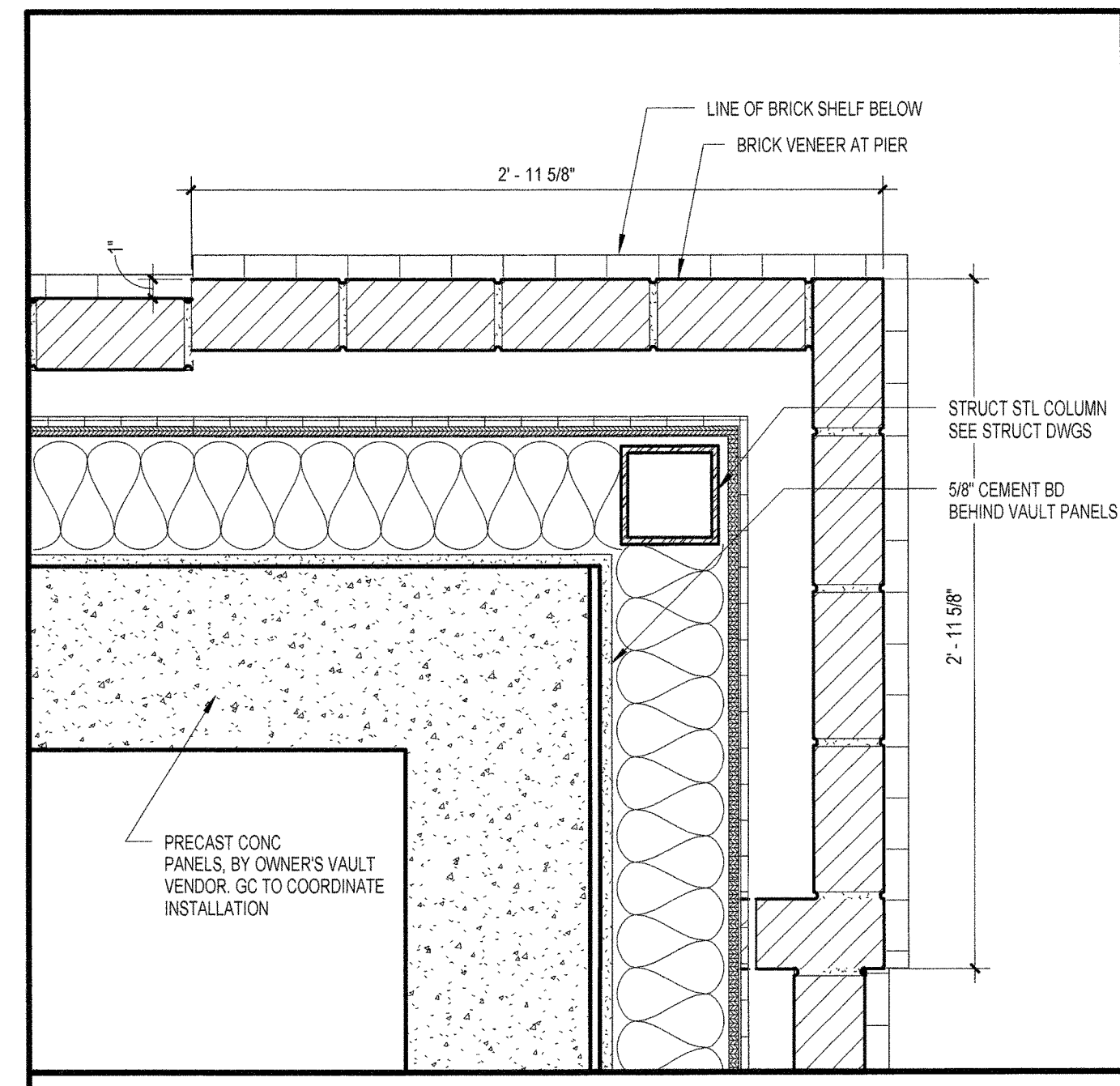
SCALE 1 1/2" = 1'-0"
 DRAWN BY _____ Author
 CHECK BY _____
 PROJ. ARCH./ENGR. _____ JR
 PROJ. MRG. _____ PJB
 JOB NO. 07133.01
 © SYMMES, MAINI & MCKEE ASSOCIATES, INC. 2006



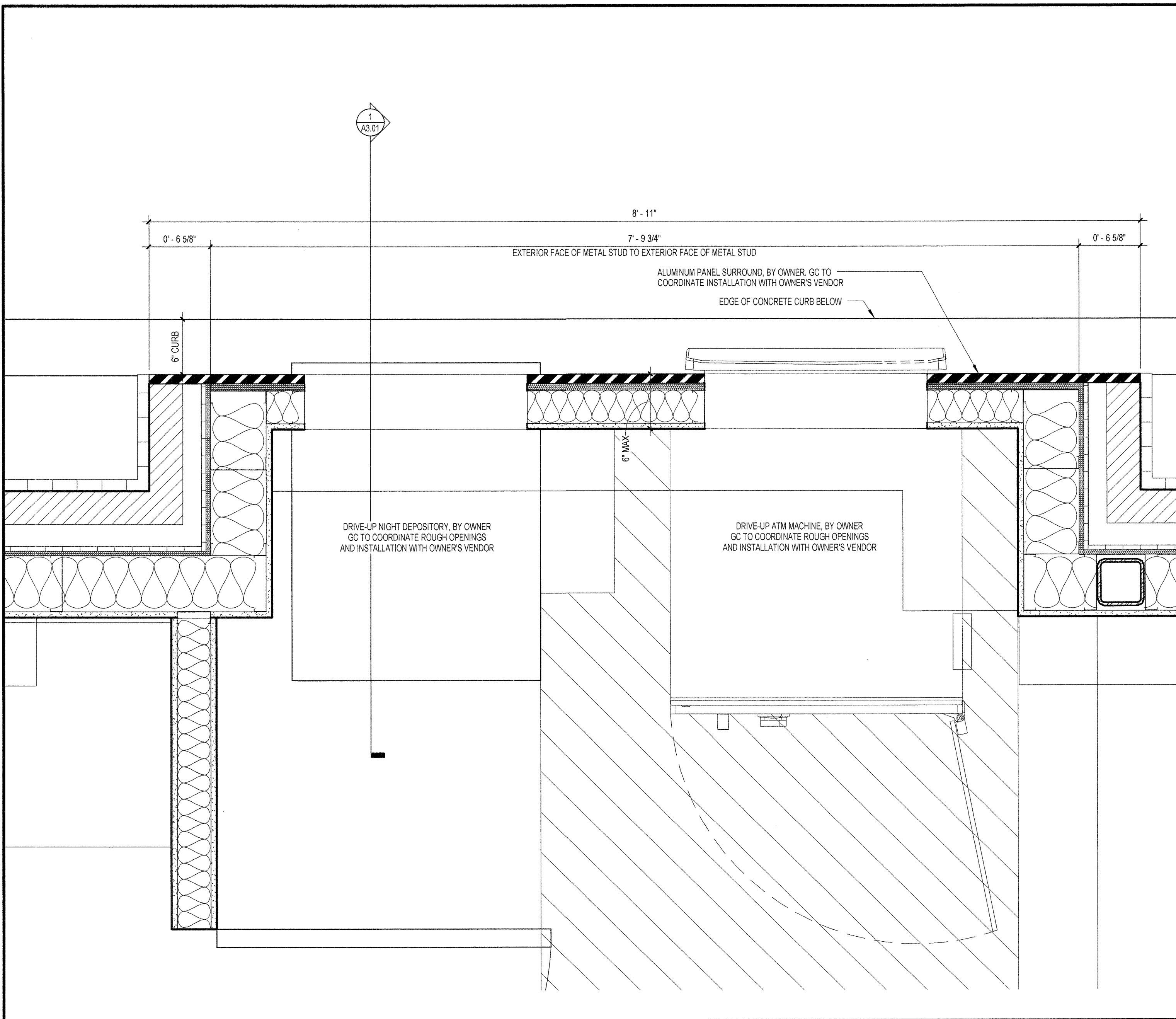
④ PLAN DETAIL OF DRIVE-UP BRICK PIER
 1 1/2" = 1'-0"



③ PLAN DETAIL OF BRICK PIER AT NORTH FACADE
 1 1/2" = 1'-0"



② PLAN DETAIL AT TYPICAL BRICK CORNER PIER
 1 1/2" = 1'-0"



① PLAN DETAIL AT DRIVE-UP ATM BUMPOUT
 1 1/2" = 1'-0"