



Submitted 10/30/16



Prepared For:

Verizon Wireless and Dewberry

Site Name:

Portland, ME ~ Head End

Site Address:

**1531 Congress Street
Portland, ME 04102**

Prepared By:

Caron & Associates Design

Benjamin E. Caron

301 Concord Street

Haverhill, MA 01830

(978) 360-3671

ben@cadsim.com



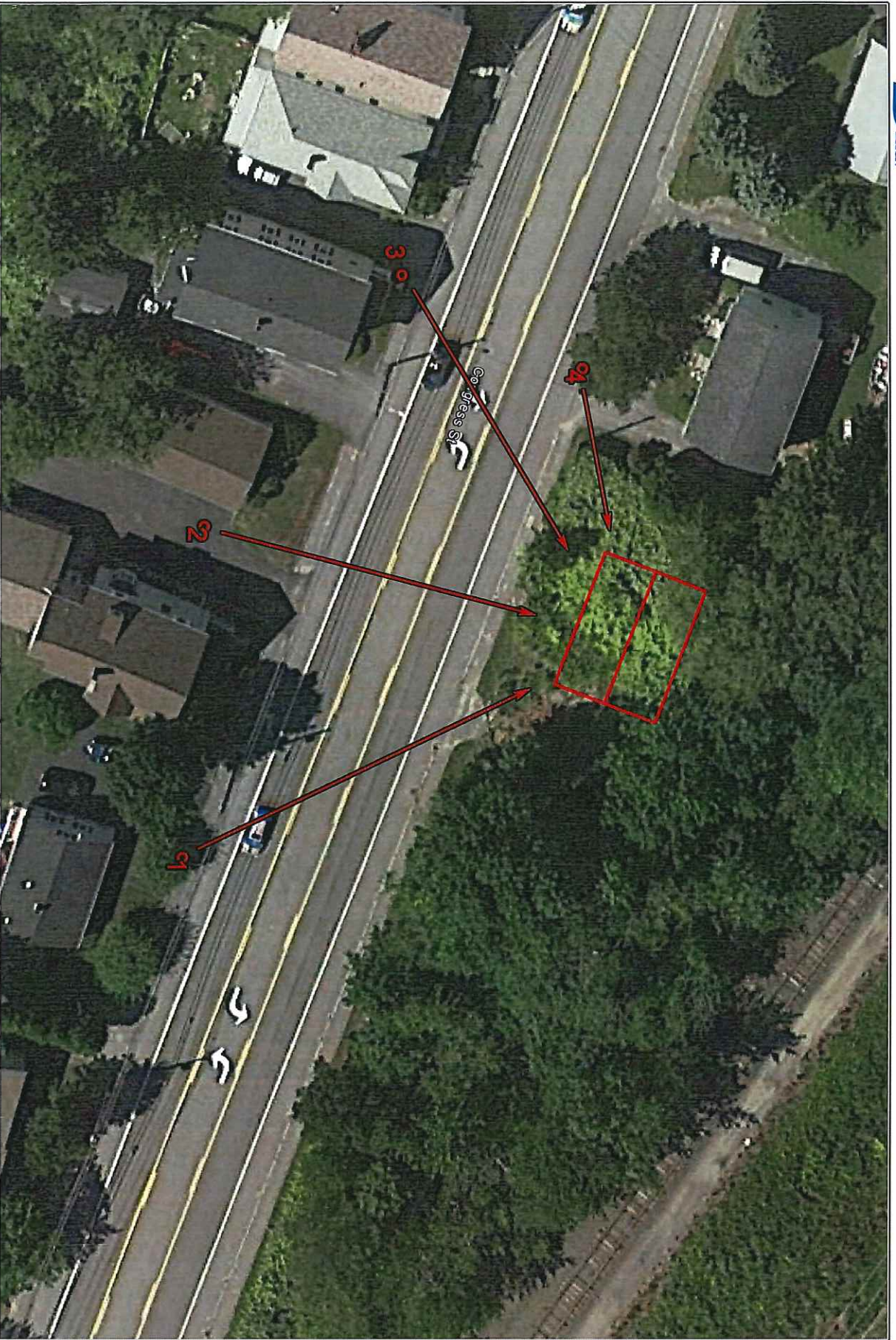
For visual reference only. Actual visibility is dependent upon weather conditions, season, sunlight, and viewer location.

Based upon Rev'd Submittal Dwg's by Dewberry dated: 9/28/2016

Portland, ME ~ Head End ~ (10/11/2016)

Photographic Renderings

Created By: Ben Caron & Mike Barreiros
CA Caron & Associates Design
(978) 360-3671 info@cadsim.com



For visual reference only. Actual visibility is dependent upon weather conditions, season, sunlight, and viewer location. Based upon Rev'd Submittal Drawg by Dewberry, dated: 9/28/2016

Portland, ME ~ Head End ~ (10/11/2016)

Photo Location Map

Created By: Ben Caron & Mike Barreiros
CAD Caron & Associates Design
(978) 360-3671 info@cadsim.com



Existing Conditions



For visual reference only. Actual visibility is dependent upon weather conditions, season, sunlight, and viewer location.

Based upon Rev'd Submittal Drawings by Dewberry dated: 9/28/2016

Portland, ME ~ Head End ~ (10/11/2016)

Photo Location 1 ~ 50mm ~ 148'+/- Away
From the sidewalk in front of #1524 Congress Street

Created By: Ben Caron & Mike Barreiro

 Caron & Associates Design
(978) 360-3671 info@cadsim.com



Proposed
Conditions



For visual reference only. Actual visibility is dependent upon weather conditions, season, sunlight, and viewer location.

Based upon Road Submittal Drawings by Dewberry, dated: 9/28/2016

Portland, ME ~ Head End ~ (10/11/2016)

Photo Location 1 ~ 50mm ~ 148'+/- Away
From the sidewalk in front of #1524 Congress Street

Created By: Ben Caron & Mike Barreiros

 Caron & Associates Design
(978) 360-3671 info@cadsimms.com



Existing
Conditions



For visual reference only. Actual visibility is dependent upon weather conditions, season, sunlight, and viewer location.

Based upon Road Submittal Draw's by Dewberry, dated: 9/28/2016

Portland, ME ~ Head End ~ (10/11/2016)

Photo Location 2 ~ 35mm ~ 131'+/- Away
From in the driveway of #1530 Congress Street

Created By: Ben Caron & Mike Barreiros

 Caron & Associates Design
(978) 360-3671 info@cadsim.com



Proposed
Conditions



For visual reference only. Actual visibility is dependent upon weather conditions, season, sunlight, and viewer location.

Based upon Re-0 Submittal Drawings by Dewberry dated: 9/28/2016

Portland, ME ~ Head End ~ (10/11/2016)

Photo Location 2 ~ 35mm ~ 131' +/- Away
From in the driveway of #1530 Congress Street

Created By: Ben Caron & Mike Barreiros
CD Caron & Associates Design
(978) 360-3671 info@cadsim.com



Existing Conditions



For visual reference only. Actual visibility is dependent upon weather conditions, season, sunlight, and viewer location.

Based upon Rev'd Submittal Drawings by Dewberry, dated: 9/28/2016

Portland, ME ~ Head End ~ (10/11/2016)

Photo Location 3 ~ 35mm ~ 128'+/- Away
From the edge of the driveway at the sidewalk of #1538 Congress Street

Created By: Ben Caron & Mike Barreiros

 Caron & Associates Design
(978) 360-3671 info@cadsim.com



Proposed
Conditions



For visual reference only. Actual visibility is dependent upon weather conditions, season, sunlight, and viewer location.

Based upon Rev-0 Submittal Drawings by Dewberry, dated: 9/28/2016

Portland, ME ~ Head End ~ (10/11/2016)

Photo Location 3 ~ 35mm ~ 128'+/- Away
From the edge of the driveway at the sidewalk of #1538 Congress Street

Created By: Ben Caron & Mike Barreiros

CD Caron & Associates Design
(978) 360-3671 info@cadsim.com



Existing Conditions



For visual reference only. Actual visibility is dependent upon weather conditions, season, sunlight, and viewer location. Based upon Road Submittal Drawings by Dewberry dated: 9/28/2016

Portland, ME ~ Head End ~ (10/11/2016)
Photo Location 4 ~ 28mm ~ 81' +/- Away
From the driveway/sidewalk intersection of #1537 Congress Street

Created By: Ben Caron & Mike Barreiros
CD Caron & Associates Design
(978) 360-3671 info@cadsim.com



Proposed
Conditions



For visual reference only. Actual visibility is dependent upon weather conditions, season, sunlight, and viewer location.
Based upon Road Submittal Drawings by Dewberry dated: 9/28/2016

Portland, ME ~ Head End ~ (10/11/2016)
Photo Location 4 ~ 28mm ~ 81' +/- Away
From the driveway/sidewalk intersection of #1537 Congress Street

Created By: Ben Caron & Mike Barreiros
 Caron & Associates Design
(978) 360-3671 info@cadsim.com