

EROSION AND SEDIMENT CONTROL PLAN:

DURING CONSTRUCTION AND THEREAFTER, EROSION CONTROL MEASURES ARE TO BE IMPLEMENTED AS NOTED:

- ALL EROSION CONTROL SHALL BE INSTALLED AND IMPLEMENTED ACCORDING TO THE MAINE EROSION AND SEDIMENT CONTROL BEST MANAGEMENT PRACTICES MANUAL (OCTOBER 2016 VERSION).
- INSTALLATION OF SILTATION FENCES AND OTHER EROSION CONTROL MEASURES SHALL BE COMPLETED PRIOR TO THE START OF SITE WORK IN ANY GIVEN AREA.
- SILTATION FENCES AND OTHER EROSION CONTROL MEASURES SHALL BE KEPT CLEAN DURING CONSTRUCTION AND REMOVED WHEN ALL SLOPES HAVE A VEGETATIVE COVER OF GREATER THAN 85%. EROSION CONTROL MEASURES SHALL BE INSPECTED ON A WEEKLY BASIS AND AFTER RAINFALL.
- EXISTING VEGETATION IS TO REMAIN UNDISTURBED WHEREVER POSSIBLE.
- INSPECT DISTURBED AND IMPERVIOUS AREAS, EROSION CONTROL MEASURES, MATERIALS STORAGE AREAS THAT ARE EXPOSED TO PRECIPITATION, AND LOCATIONS WHERE VEHICLES ENTER OR EXIT THE SITE. INSPECT THESE AREAS AT LEAST ONCE A WEEK AS WELL AS BEFORE AND WITHIN 24 HOURS AFTER A STORM EVENT (RAINFALL), AND PRIOR TO COMPLETING PERMANENT STABILIZATION MEASURES. A PERSON WITH KNOWLEDGE OF EROSION AND STORMWATER CONTROL, INCLUDING THE STANDARDS AND CONDITIONS IN THE PERMIT, SHALL CONDUCT THE INSPECTIONS.
- IF BEST MANAGEMENT PRACTICES (BMPs) NEED TO BE REPAIRED, THE REPAIR WORK SHOULD BE INITIATED UPON DISCOVERY OF THE PROBLEM BUT NO LATER THAN THE END OF THE NEXT WORKDAY. IF ADDITIONAL BMPs OR SIGNIFICANT REPAIR OF BMPs ARE NECESSARY, IMPLEMENTATION MUST BE COMPLETED WITHIN 7 CALENDAR DAYS AND PRIOR TO ANY STORM EVENT (RAINFALL). ALL MEASURES MUST BE MAINTAINED IN EFFECTIVE OPERATING CONDITION UNTIL AREAS ARE PERMANENTLY STABILIZED.
- KEEP A LOG (REPORT) SUMMARIZING THE INSPECTIONS AND ANY CORRECTIVE ACTION TAKEN. THE LOG MUST INCLUDE THE NAME(S) AND QUALIFICATIONS OF THE PERSON MAKING THE INSPECTIONS, THE DATE(S) OF THE INSPECTIONS, AND MAJOR OBSERVATIONS ABOUT THE OPERATION AND MAINTENANCE OF EROSION AND SEDIMENTATION CONTROLS, MATERIALS STORAGE AREAS, AND VEHICLES ACCESS POINTS TO THE PARCEL. MAJOR OBSERVATIONS MUST INCLUDE BMPs THAT NEED MAINTENANCE, BMPs THAT FAILED TO OPERATE AS DESIGNED OR PROVED INADEQUATE FOR A PARTICULAR LOCATION, AND LOCATION(S) WHERE ADDITIONAL BMPs ARE NEEDED. FOR EACH BMP REQUIRING MAINTENANCE, BMP NEEDING REPLACEMENT, AND LOCATION NEEDING ADDITIONAL BMPs, NOTE IN THE LOG THE CORRECTIVE ACTION TAKEN AND WHEN IT WAS TAKEN.
- THE LOG MUST BE MADE ACCESSIBLE TO DEPARTMENT STAFF AND A COPY MUST BE PROVIDED UPON REQUEST. THE PERMITTEE SHALL RETAIN A COPY OF THE LOG FOR A PERIOD OF AT LEAST THREE YEARS FROM THE COMPLETION OF PERMANENT STABILIZATION.
- MINIMIZE THE EXPOSURE OF CONSTRUCTION DEBRIS, BUILDING AND LANDSCAPING MATERIALS, TRASH, FERTILIZERS, PESTICIDES, HERBICIDES, DETERGENTS, SANITARY WASTE AND OTHER MATERIALS TO PRECIPITATION AND STORMWATER RUNOFF. THESE MATERIALS MUST BE PREVENTED FROM BECOMING A POLLUTANT SOURCE.
- EXCAVATION DE-WATERING SHALL BE COMPLETED IN ACCORDANCE TO MAINE EROSION AND SEDIMENT CONTROL BEST MANAGEMENT PRACTICES MANUAL AND MAINE CHAPTER 500 STANDARDS.

INFILTRATION REQUIREMENTS:

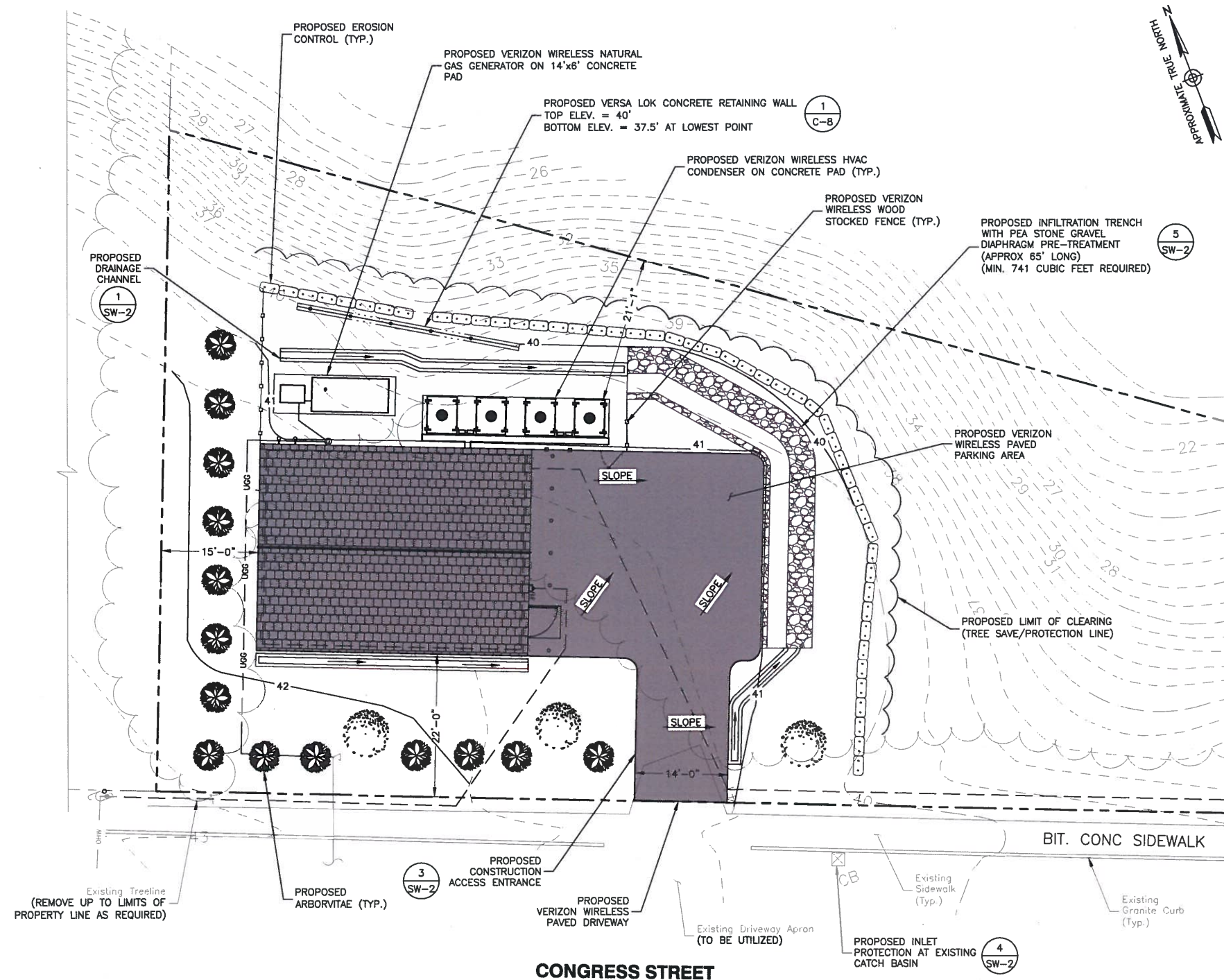
- SNOW REMOVED FROM ANY ON-SITE OR OFF-SITE AREAS MAY NOT BE STORED OVER AN INFILTRATION AREA.
- OBSERVATION WELLS TO DETERMINE THE SYSTEM'S PERFORMANCE AND ACCESS POINTS TO ALLOW FOR THE REMOVAL OF ACCUMULATED SEDIMENT MUST BE INCLUDED IN THE DESIGN OF SUBSURFACE FLUID DISTRIBUTION SYSTEMS. DRY WELLS AND INFILTRATION BASINS MUST HAVE STAFF GAUGES, MARKED RODS, OR SIMILAR INSTRUMENTATION TO MEASURE THE ACCUMULATION OF SEDIMENT AND DETERMINE HOW QUICKLY THE SYSTEM DRAINS AFTER A STORM.
- THE BOTTOM OF THE INFILTRATION SYSTEM, INCLUDING ANY STONE LAYER OR OTHER MATERIAL BELOW THE DEPTH OF ANY MANUFACTURED COMPONENTS OF THE SYSTEM, MUST BE AT LEAST THREE FEET ABOVE THE ELEVATION OF THE SEASONAL HIGH WATER TABLE.
- SEDIMENT MUST BE REMOVED FROM THE SYSTEM TO PREVENT DETERIORATION OF SYSTEM PERFORMANCE. THE SYSTEM MUST BE REHABILITATED OR REPLACED IF ITS PERFORMANCE IS DEGRADED TO THE POINT THAT APPLICABLE STORMWATER STANDARDS ARE NOT MET.

MULCHING REQUIREMENTS:

- REQUIRE MULCHING PER WEATHER PREDICTION, SOIL ERODIBILITY, SEASON, EXTENT OF DISTURBANCE, ETC. WITHIN 7 DAYS IN SENSITIVE AREAS (WITHIN 100 FEET OF A NATURAL RESOURCE) OR WITHIN 14 TO 30 DAYS IN OTHER AREAS.
- MULCH SHOULD BE USED WITH TREES, SHRUBS, VINES AND FOR ALL GROUND COVER PLANTINGS.
- ANCHOR HAY MULCH WITH STAPLED MESH NETTING OR BY STRETCHING TWINE IN A CRISSCROSS PATTERN BETWEEN PEGS (4-6 PEGS PER SQUARE YARD, 2-3 INCH DEEP). DRIVE THE PEGS FLUSH WITH SOIL WHERE MOWING IS PLANNED.
- A TEMPORARY ROAD OR AN UNFINISHED ROAD (WITHOUT ITS FINAL DRIVING SURFACE OF GRAVEL) MAY REQUIRE MULCHING PRIOR TO A RAIN EVENT.

EROSION CONTROL MULCH MIX SPECIFICATIONS:

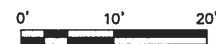
- THE RECOMMENDED THICKNESS FOR EROSION CONTROL MIX IS 4 INCH PLUS AN ADDITIONAL 1/2 INCH PER 20 FEET OF SLOPE UP TO 100 FEET IF THE SLOPE IS STEEPER THAN 3:1.
- EROSION CONTROL MIX SHOULD CONTAIN A WELL-GRADED MIXTURE OF PARTICLE SIZES AND MAY CONTAIN ROCKS LESS THAN 4" IN DIAMETER. EROSION CONTROL MIX SHOULD BE FREE OF REFUSE, PHYSICAL CONTAMINANTS, AND MATERIAL TOXIC TO PLANT GROWTH SUCH AS FLY ASH OR YARD SCRAPING. LARGE PORTIONS OF SILTS, CLAYS OR FINE SANDS ARE NOT ACCEPTABLE IN THE MIX. THE MIX COMPOSITION SHOULD MEET THE FOLLOWING STANDARDS:
- THE ORGANIC MATTER CONTENT SHOULD BE BETWEEN 80% AND 100%, DRY WEIGHT BASIS.
- PARTICLE SIZE BY WEIGHT SHOULD BE 100% PASSING A 6" SCREEN AND 70% TO 85% PASSING A 0.75" SCREEN.
- THE ORGANIC PORTION NEEDS TO BE FIBROUS AND ELONGATED.
- SOLUBLE SALTS CONTENT SHALL BE < 4.0 MMHOS/CM.
- THE PH SHOULD BE BETWEEN 5.0 AND 8.0.
- EROSION CONTROL MIX 2 INCHES FOR SLOPES FLATTER THAN 3:1 OR 4 INCHES FOR SLOPES GREATER THAN 3:1
- THE MIX MUST CONTAIN SOME SOIL.



CONGRESS STREET

STORMWATER MANAGEMENT PLAN

SCALE: 1"=20' FOR 11"x17"
1"=10' FOR 22"x34"



- THE MIX MUST BE WELL-GRADED WITH AN ORGANIC COMPONENT THAT IS BETWEEN 50 AND 100% OF DRY WEIGHT, AND THAT IS COMPOSED OF FIBROUS AND ELONGATED FRAGMENTS. THE MINERAL PORTION OF THE MIX SHOULD BE NATURALLY INCLUDED IN THE PRODUCT WITH NO LARGER ROCKS (>4") OR LARGE AMOUNTS OF FINES (SILTS AND CLAYS). IN STUMP GRINDING, THE MINERAL SOIL ORIGINATES FROM THE ROOT BALL AND SHOULD NOT BE REMOVED BEFORE GRINDING. THE MIX SHOULD BE FREE OF REFUSE, MATERIAL TOXIC TO PLANT GROWTH OR UNSUITABLE MATERIAL (BARK CHIPS, GROUND CONSTRUCTION DEBRIS OR REPROCESSED WOOD PRODUCTS).
- EROSION CONTROL MIX CAN BE USED ON FROZEN GROUND, FORESTED AREAS, ON CUT AND FILL SLOPES, AND ON ROADSIDE EMBANKMENTS.
- APPLY A THICKNESS OF 2 INCHES ON 3:1 SLOPES OR LESS AND ADD AN ADDITIONAL 1/2 INCH PER 20 FEET OF SLOPE OR UP TO 4 INCHES FOR A 100 FOOT SLOPE.
- ON SLOPES GREATER THAN 3:1, 4 INCHES OR MORE OF MATERIAL IS RECOMMENDED; AND IF SLOPES ARE GREATER THAN 60 FEET LONG, 5 INCHES ARE NEEDED.
- EROSION CONTROL MIX IS NOT RECOMMENDED FOR SLOPES STEEPER THAN 1:1.
- THE MIX MUST BE DISTRIBUTED EVENLY WITH A HYDRAULIC BUCKET, PNEUMATIC BLOWER, OR BY HAND.
- OTHER REINFORCEMENT BMPs (I.E. RIPRAP) SHOULD BE USED ON SLOPES WITH GROUNDWATER SEEPAGE, WITHIN DRAINAGE CHANNELS AND THEIR OUTLETS, OR IN GULLIES.

verizon
WIRELESS

VERIZON WIRELESS
118 FLANDERS ROAD
WESTBOROUGH, MA 01581-3956

**PORTLAND ME
HEAD END**

CONSTRUCTION DRAWINGS

O	11/27/17	FOR CONSTRUCTION
C	10/30/17	90% SUBMITTAL
B	10/04/17	80% SUBMITTAL
A	04/14/17	50% SUBMITTAL

Dewberry

Dewberry Engineers Inc.
280 SUMMER STREET
10TH FLOOR
BOSTON, MA 02210
PHONE: 617.665.3400
FAX: 617.665.3310



DRAWN BY: SK

REVIEWED BY: MFT

CHECKED BY: BBR

PROJECT NUMBER: 50002925

JOB NUMBER: 50080012

SITE ADDRESS:

1531 CONGRESS ST.
PORTLAND, ME 04102

SHEET TITLE

STORMWATER MANAGEMENT
PLAN

SHEET NUMBER

SW-1