

**PORTLAND ME
HEAD END**

CONSTRUCTION DRAWINGS

O	11/27/17	FOR CONSTRUCTION
C	10/30/17	90% SUBMITTAL
B	10/04/17	80% SUBMITTAL
A	04/14/17	50% SUBMITTAL

Dewberry Engineers Inc.
280 SUMMER STREET
10TH FLOOR
BOSTON, MA 02210
PHONE: 617.885.3400
FAX: 617.885.3310



DRAWN BY:	SK
REVIEWED BY:	MFT
CHECKED BY:	BBR
PROJECT NUMBER:	50002925
JOB NUMBER:	50080012
SITE ADDRESS:	

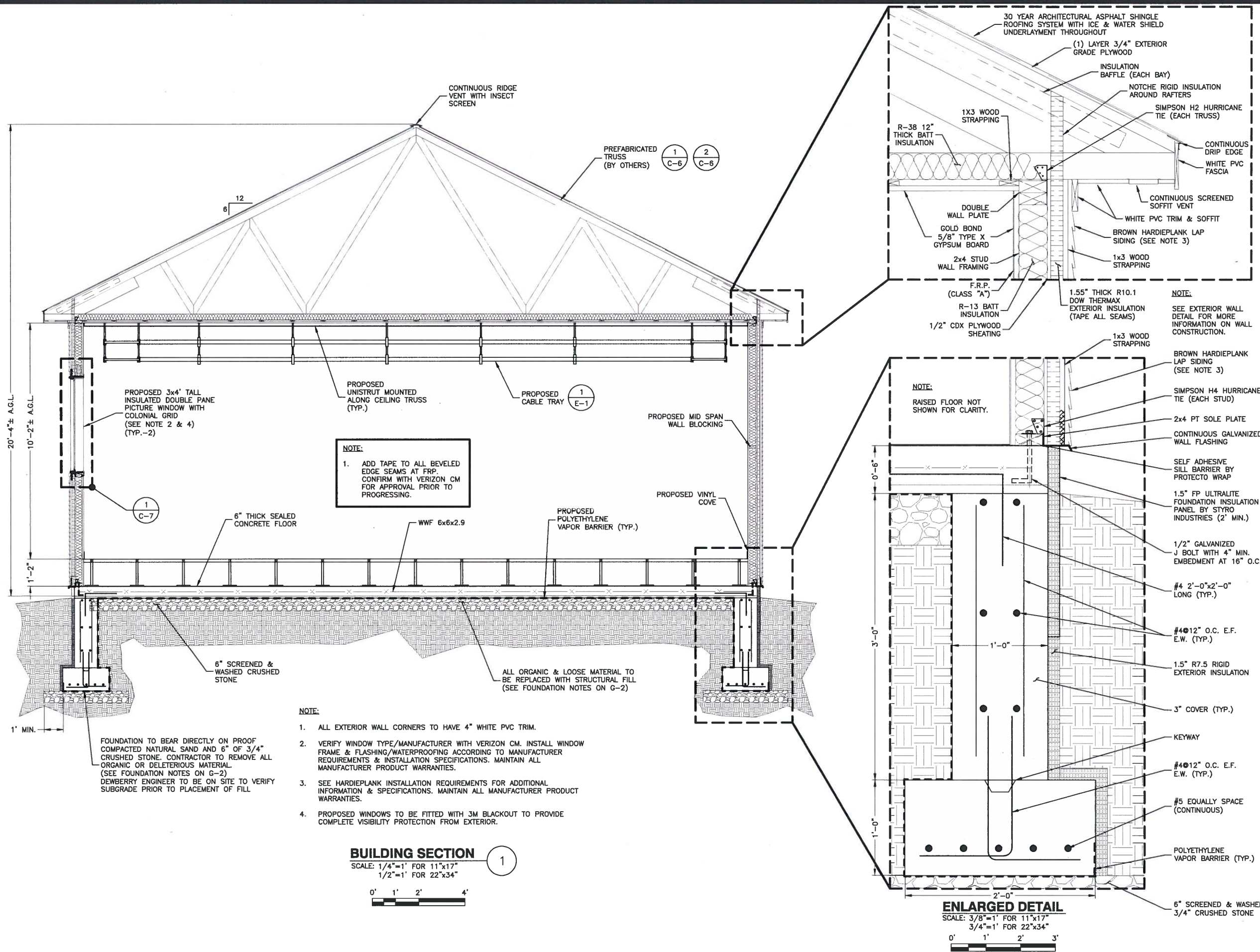
1531 CONGRESS ST.
PORTLAND, ME 04102

SHEET TITLE

SHELTER SECTION

SHEET NUMBER

C-5



NOTE:
1. ADD TAPE TO ALL BEVELED EDGE SEAMS AT FRP. CONFIRM WITH VERIZON CM FOR APPROVAL PRIOR TO PROGRESSING.

- NOTE:**
1. ALL EXTERIOR WALL CORNERS TO HAVE 4" WHITE PVC TRIM.
 2. VERIFY WINDOW TYPE/MANUFACTURER WITH VERIZON CM. INSTALL WINDOW FRAME & FLASHING/WATERPROOFING ACCORDING TO MANUFACTURER REQUIREMENTS & INSTALLATION SPECIFICATIONS. MAINTAIN ALL MANUFACTURER PRODUCT WARRANTIES.
 3. SEE HARDIEPLANK INSTALLATION REQUIREMENTS FOR ADDITIONAL INFORMATION & SPECIFICATIONS. MAINTAIN ALL MANUFACTURER PRODUCT WARRANTIES.
 4. PROPOSED WINDOWS TO BE FITTED WITH 3M BLACKOUT TO PROVIDE COMPLETE VISIBILITY PROTECTION FROM EXTERIOR.

BUILDING SECTION
SCALE: 1/4"=1' FOR 11"x17"
1/2"=1' FOR 22"x34"
1

ENLARGED DETAIL
SCALE: 3/8"=1' FOR 11"x17"
3/4"=1' FOR 22"x34"
1