

**PORTLAND ME
HEAD END**

CONSTRUCTION DRAWINGS

O	11/27/17	FOR CONSTRUCTION
C	10/30/17	90% SUBMITTAL
B	10/04/17	80% SUBMITTAL
A	04/14/17	50% SUBMITTAL



Dewberry Engineers Inc.
280 SUMMER STREET
10TH FLOOR
BOSTON, MA 02210
PHONE: 617.695.3400
FAX: 617.695.3310



DRAWN BY:	SK
REVIEWED BY:	MFT
CHECKED BY:	BBR
PROJECT NUMBER:	50002925
JOB NUMBER:	50080012
SITE ADDRESS:	

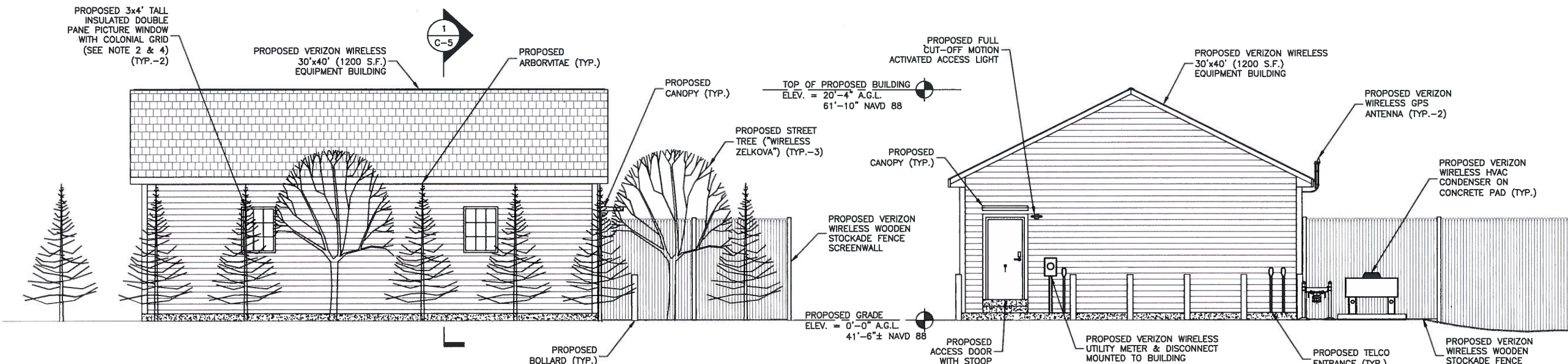
1531 CONGRESS ST.
PORTLAND, ME 04102

SHEET TITLE

ELEVATIONS

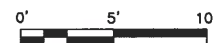
SHEET NUMBER

C-4



SOUTH ELEVATION

SCALE: 1"=10' FOR 11"x17"
1"=5' FOR 22"x34"



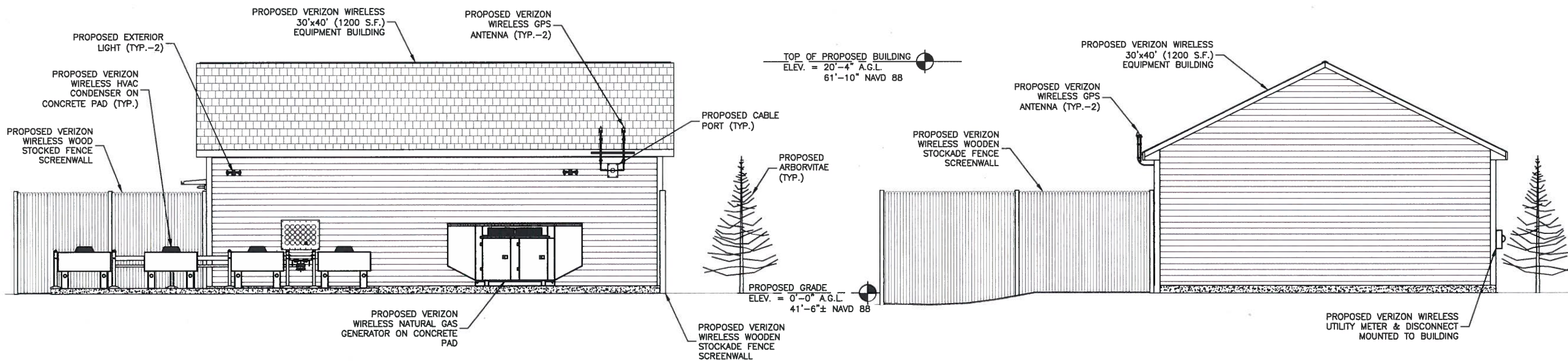
EAST ELEVATION

SCALE: 1"=10' FOR 11"x17"
1"=5' FOR 22"x34"



NOTE:

- GROUND ELEVATIONS VARY & ARE SHOWN AS APPROXIMATE. SEE GRADING PLAN FOR FINISH GRADE INFORMATION.
- VERIFY WINDOW TYPE/MANUFACTURER WITH VERIZON CM. INSTALL WINDOW FRAME & FLASHING/WATERPROOFING ACCORDING TO MANUFACTURER REQUIREMENTS & INSTALLATION SPECIFICATIONS. MAINTAIN ALL MANUFACTURER PRODUCT WARRANTIES.
- SEE HARDIEPLANK INSTALLATION REQUIREMENTS FOR ADDITIONAL INFORMATION & SPECIFICATIONS. MAINTAIN ALL MANUFACTURER PRODUCT WARRANTIES.
- PROPOSED WINDOWS TO BE FITTED WITH 3M BLACKOUT TO PROVIDE COMPLETE VISIBILITY PROTECTION FROM EXTERIOR.



NORTH ELEVATION

SCALE: 1"=10' FOR 11"x17"
1"=5' FOR 22"x34"



WEST ELEVATION

SCALE: 1"=10' FOR 11"x17"
1"=5' FOR 22"x34"

