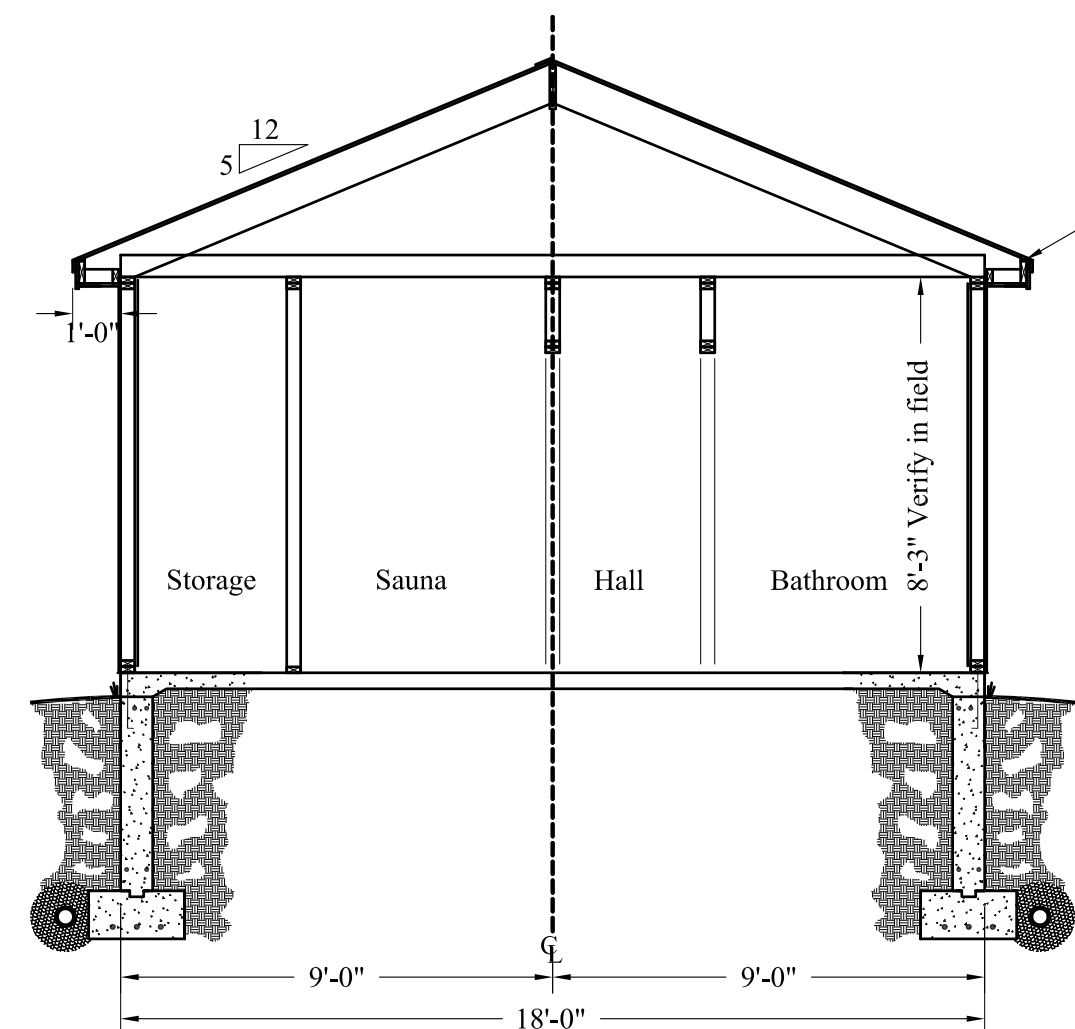
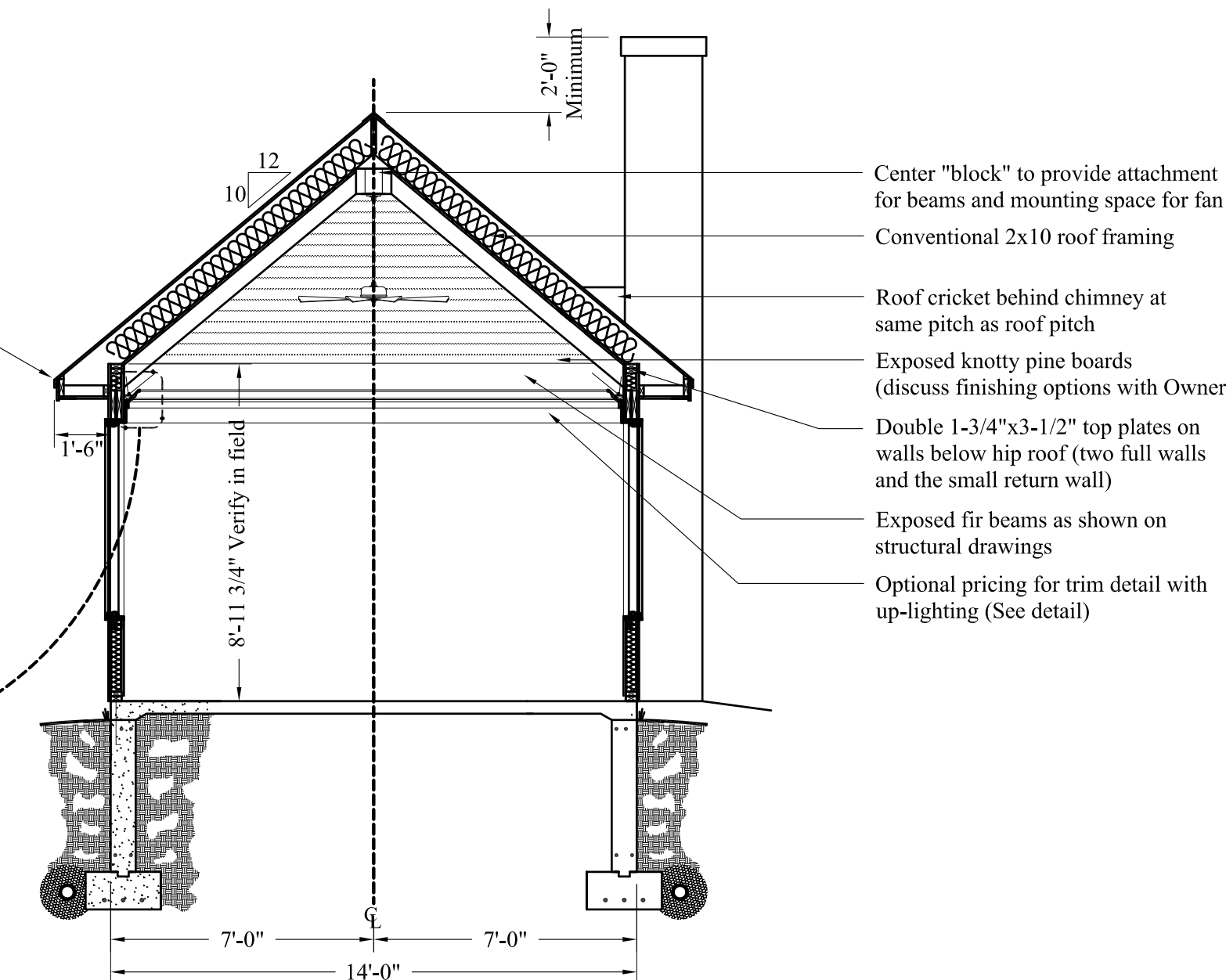


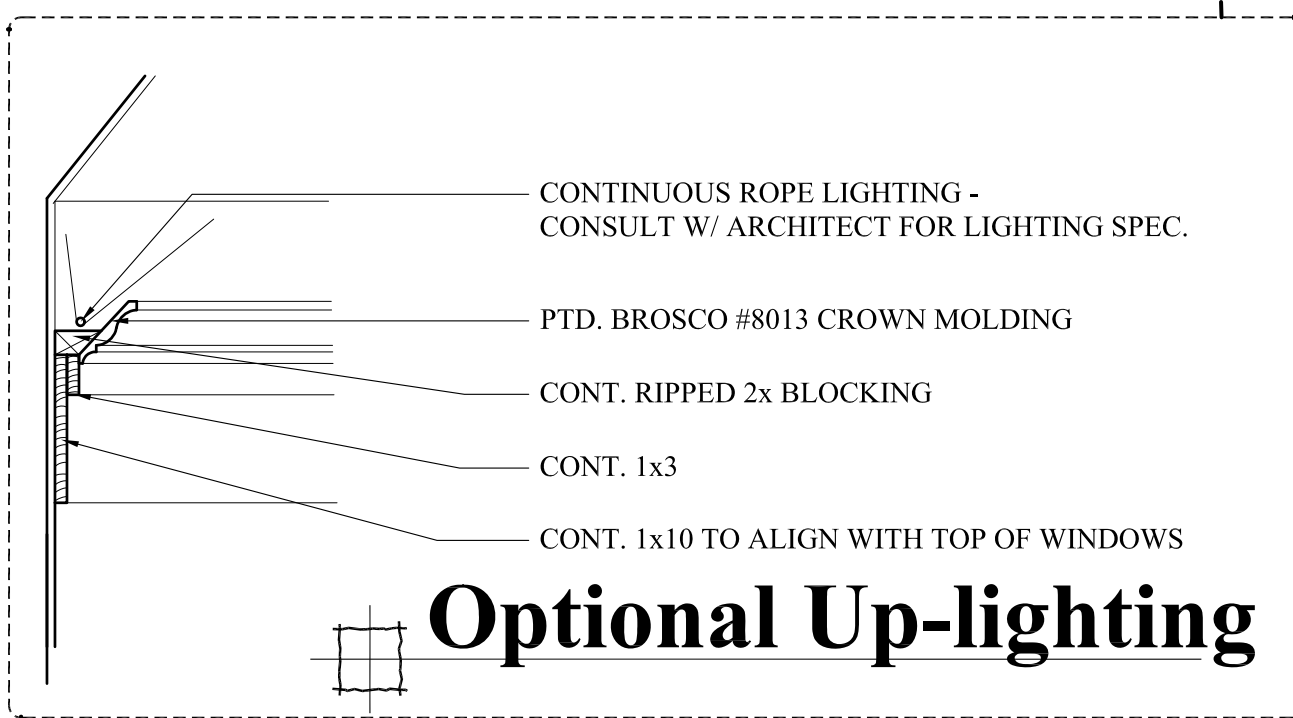
**Foundation Plan**  
Scale 1/4" = 1'-0"



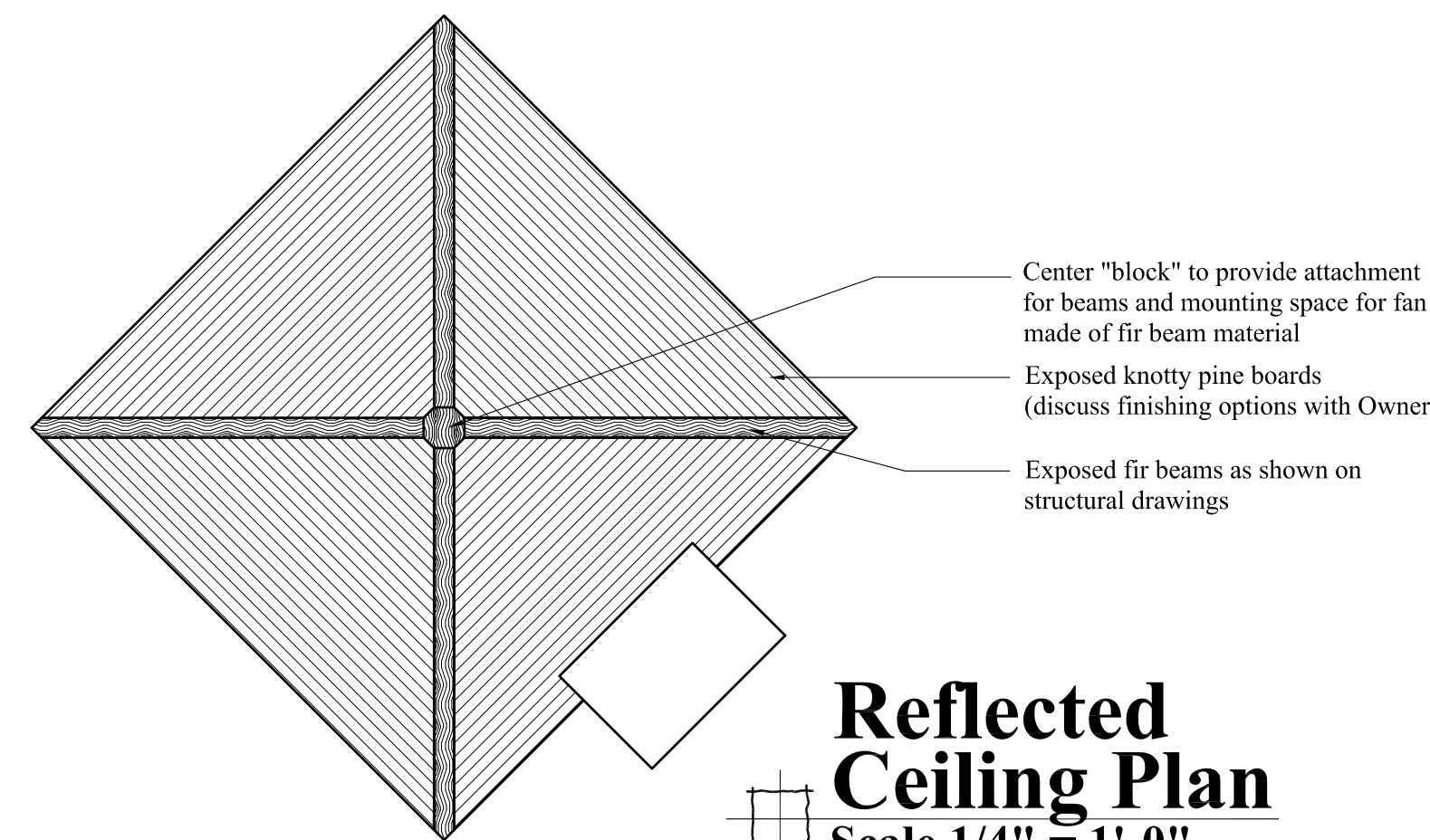
**Section A**  
Scale 1/4" = 1'-0"



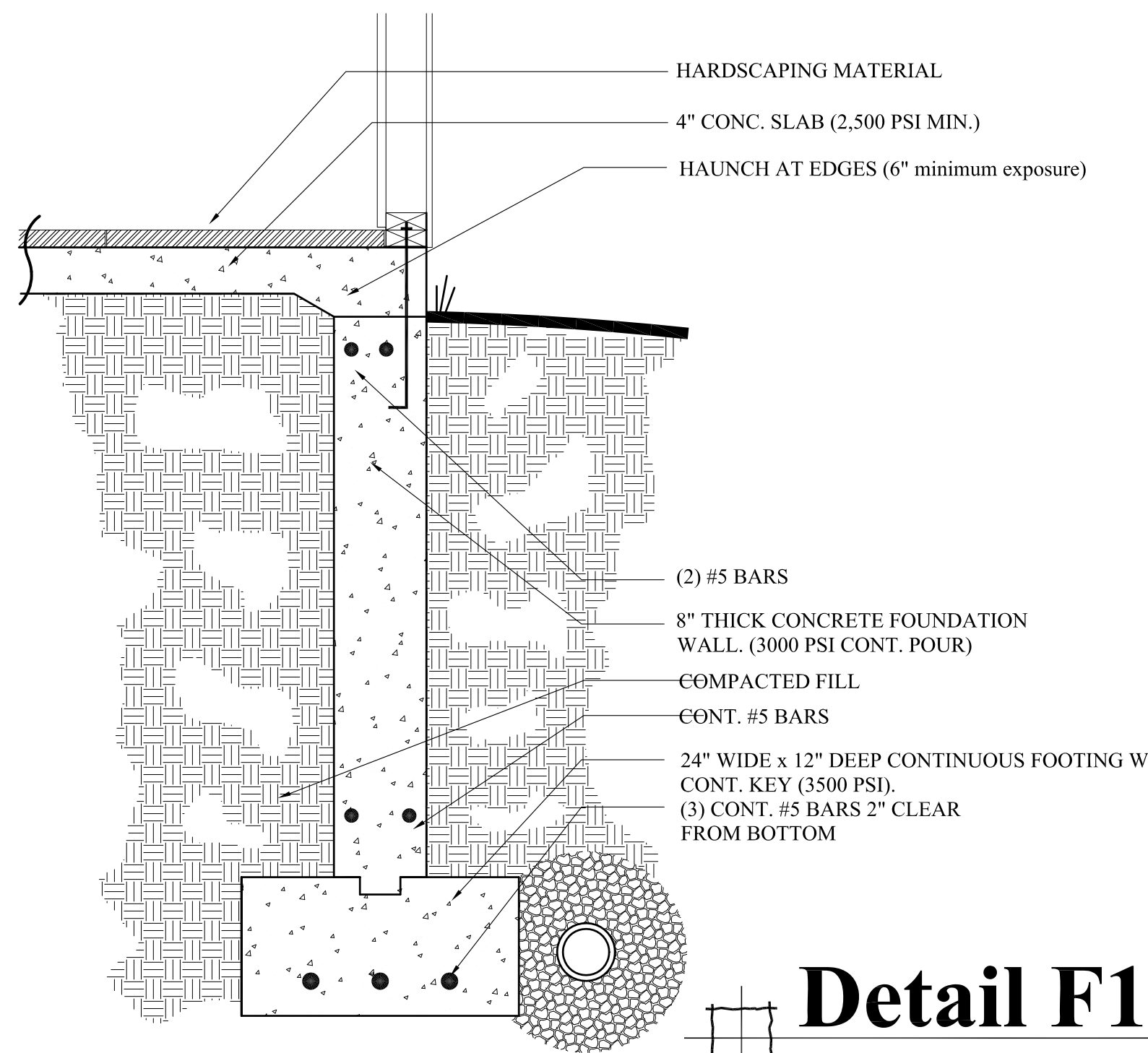
**Section B**  
Scale 1/4" = 1'-0"



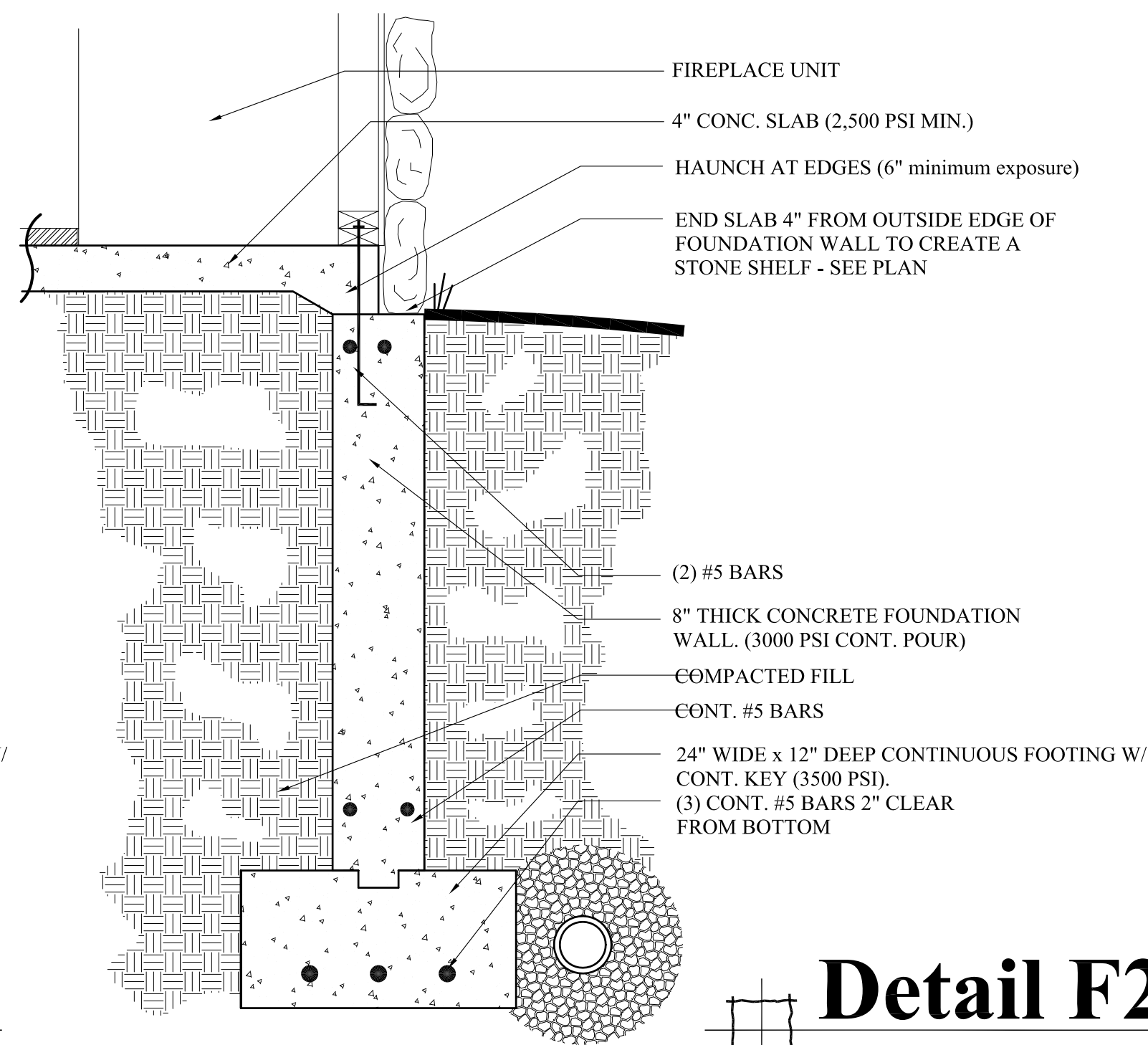
**Optional Up-lighting**



**Reflected Ceiling Plan**  
Scale 1/4" = 1'-0"



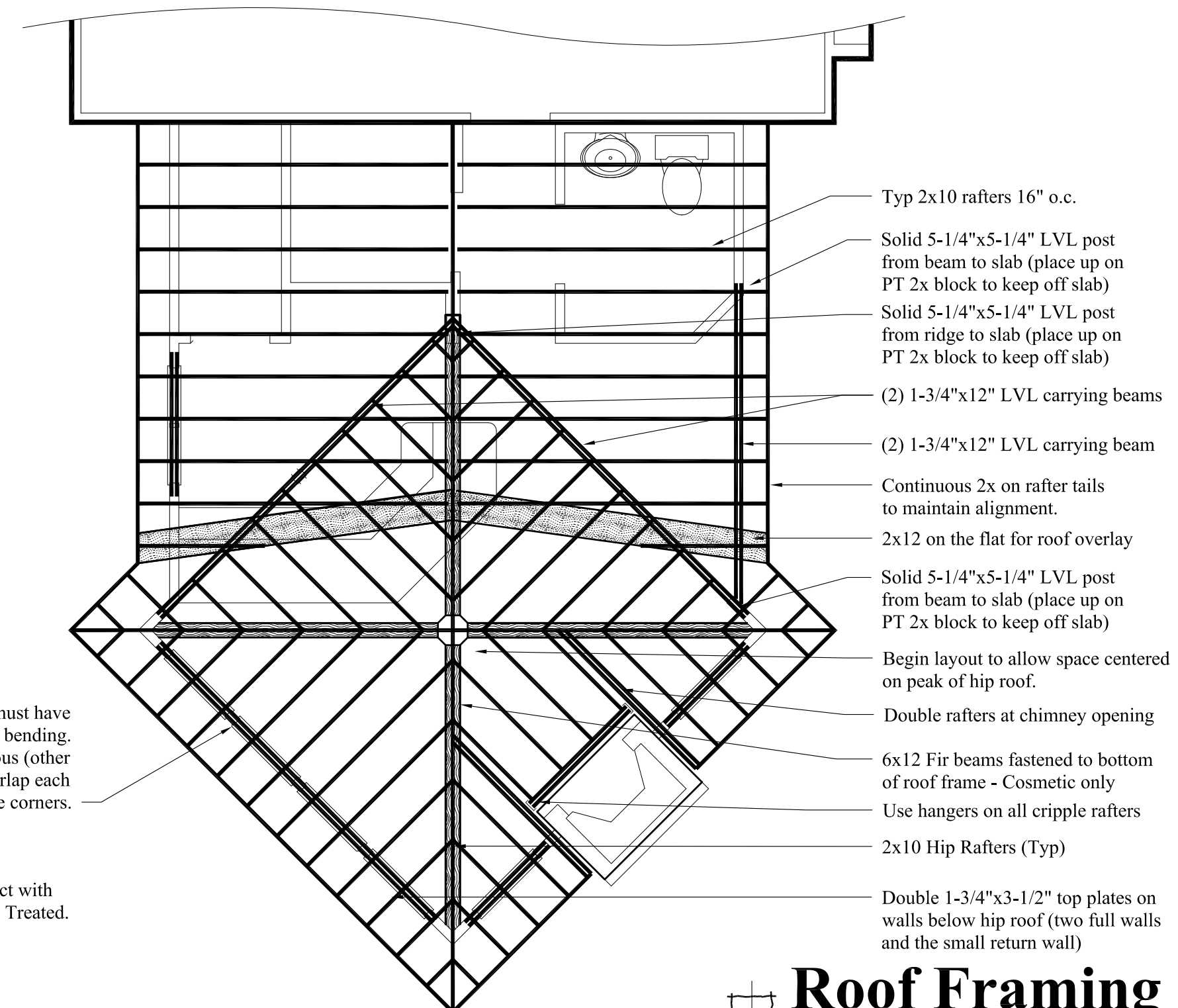
**Detail F1**



**Detail F2**

Top plates of walls below hip roof must have (2) 1-3/4"x3-1/2" LVL's to resist bending. These top plates must be continuous (other than chimney opening) and must overlap each other at the corners.

All lumber in direct contact with concrete must be Pressure Treated.



**Roof Framing**  
Scale 1/4" = 1'-0"

DESCRIPTION	
NO.	DATE
REVISIONS	

CUSTOM CONCEPTS, INC.  
ARCHITECTS

383 U.S. ROUTE 1, SUITE 14 - SCARBOROUGH, MAINE 04074  
Phone: (207) 883-0083 WWW.CUSTOMCONCEPTS.COM

PROJECT: Addition to the Russo Residence  
JOB NUMBER: 9170-11  
DRAWN BY: MER  
SCALE: 1/4" = 1'-0" U.N.C.

OWNER APPROVAL:

DATE: July 28, 2011

**A2**