

# 12 Frost St. Plot Plan

158.5 ft.

25 x 42  
Asphalt

30 x 50  
Asphalt

31 x 25  
Garage

9 x 29  
Mud  
Room

32 x 65  
Main  
House

9 x 5  
Entry

132 ft.

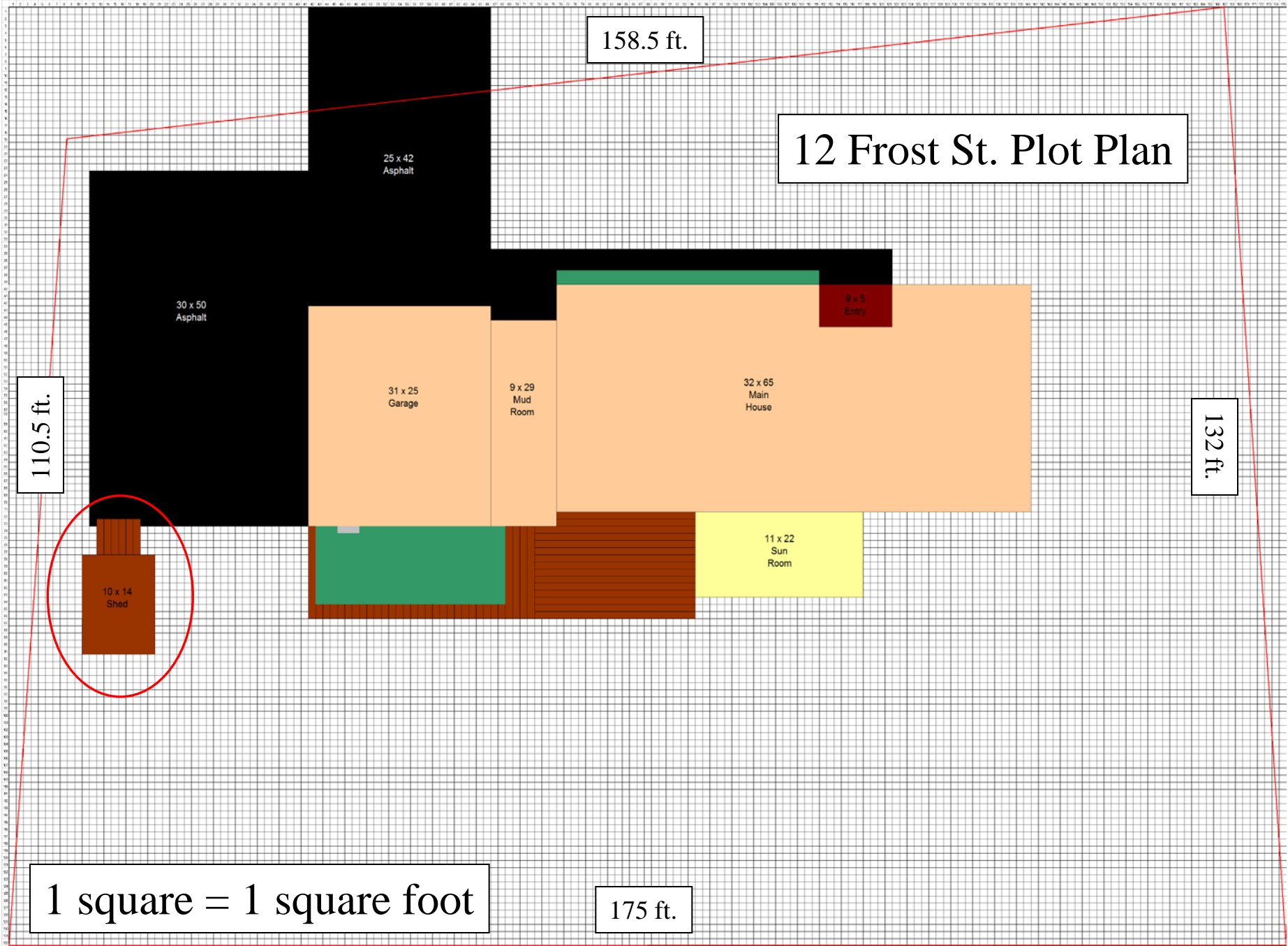
110.5 ft.

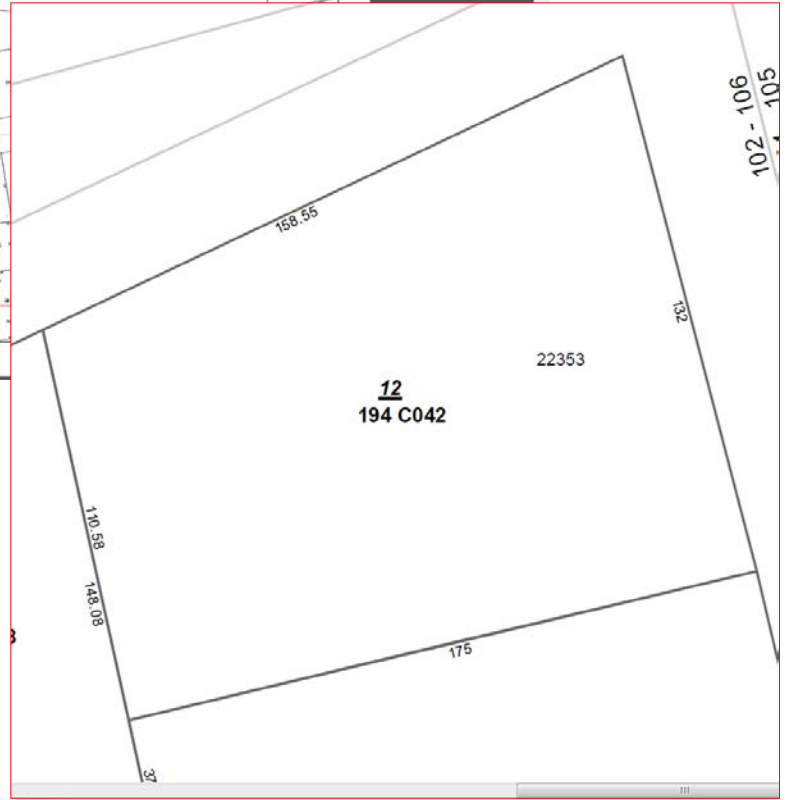
10 x 14  
Shed

11 x 22  
Sun  
Room

1 square = 1 square foot

175 ft.





12 Frost St., Portland, Me 04102

Portland Assessor Map  
Index Number - G6SW