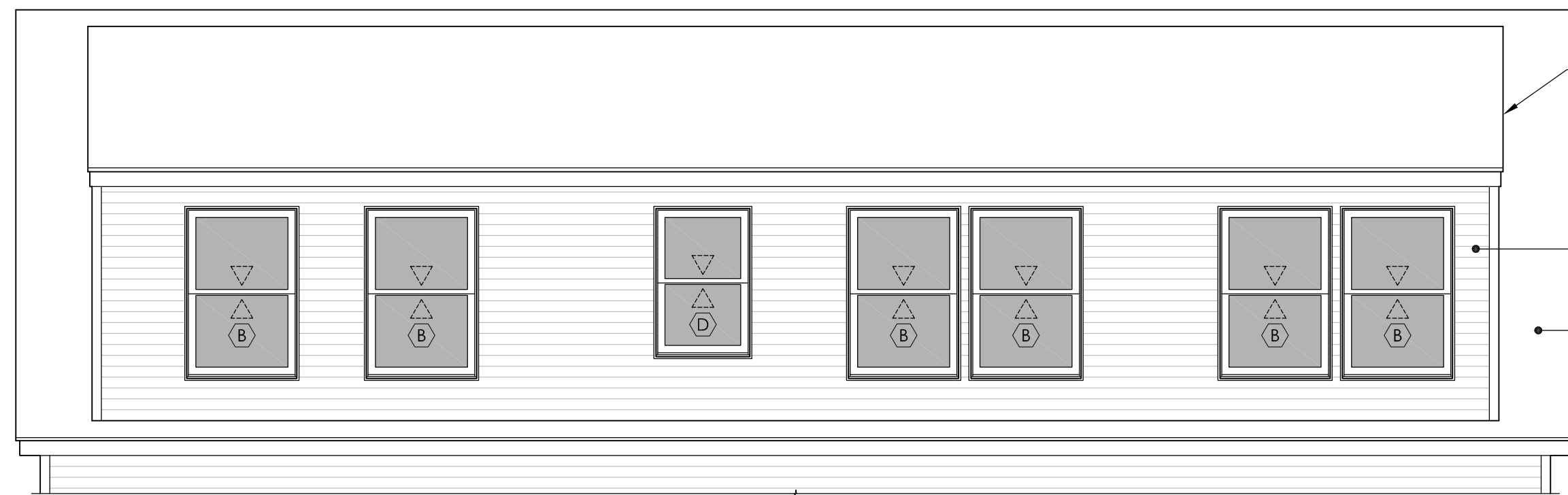




EXISTING EAST ELEVATION
(NOT TO SCALE)

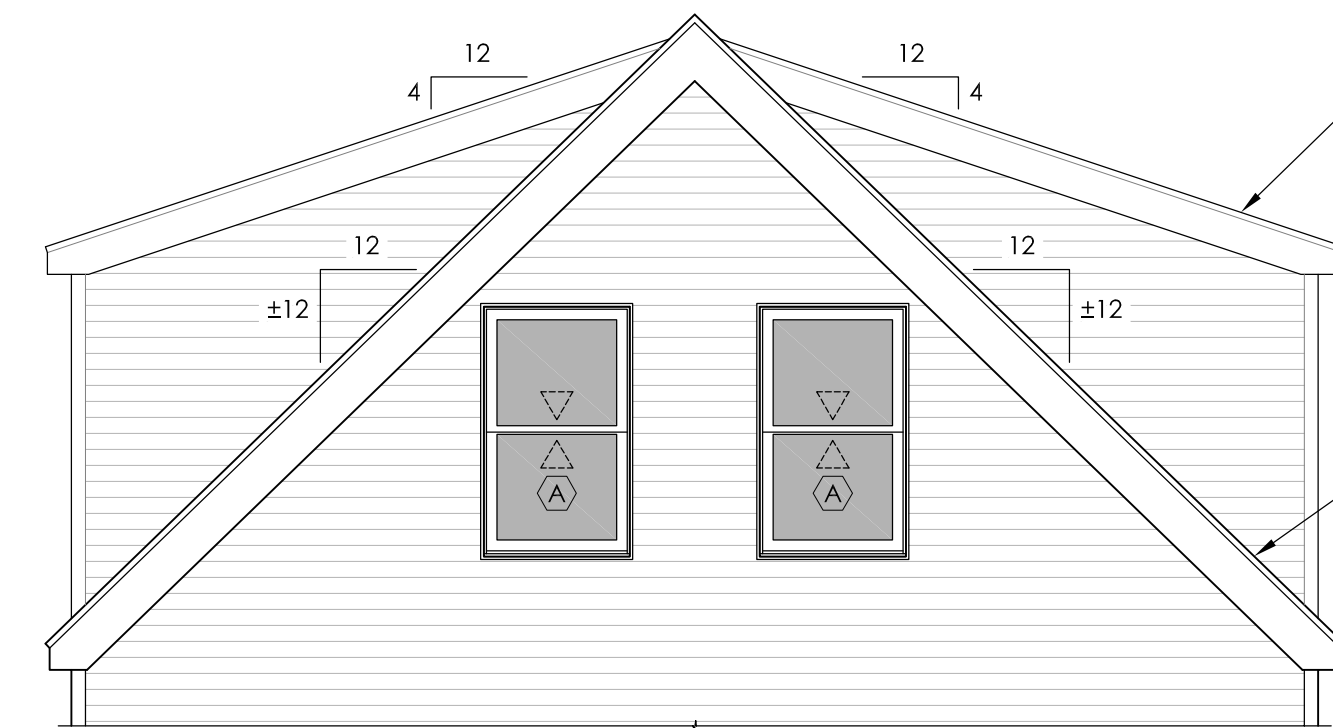


SHED DORMER, TYP.

CLAPBOARD WALL FINISH
TO MATCH EXISTING

COMMON ROOF, TYP.

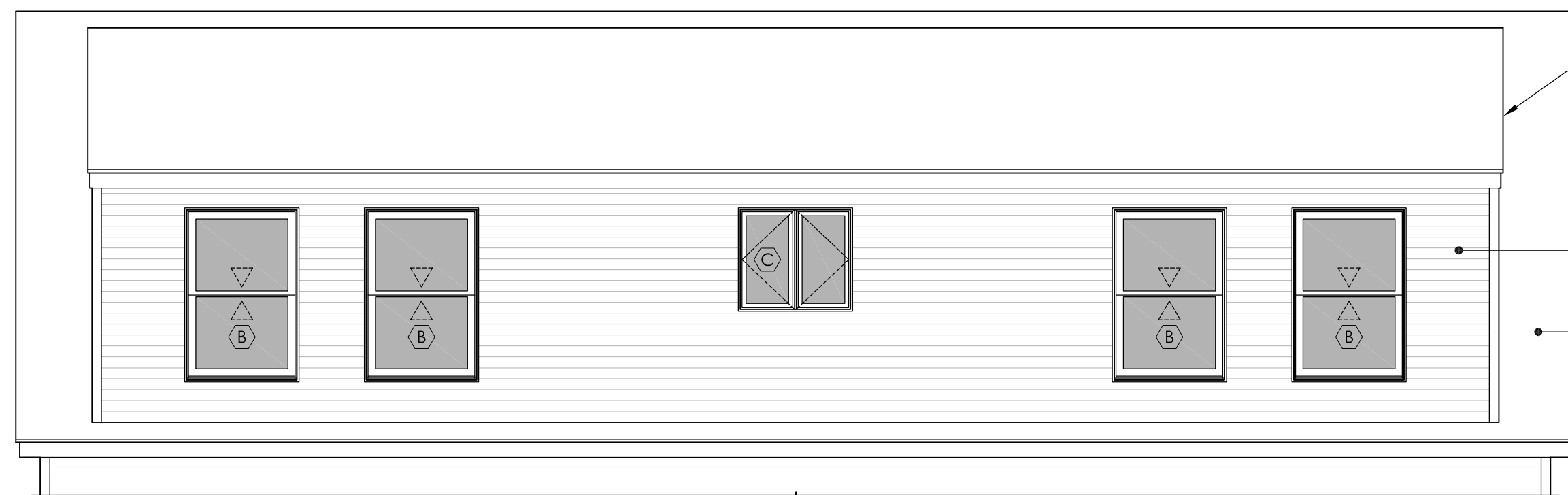
1 EAST ELEVATION
Scale: 1/4" = 1'-0"



SHED DORMER, TYP.

COMMON ROOF, TYP.

2 SOUTH ELEVATION
Scale: 1/4" = 1'-0"

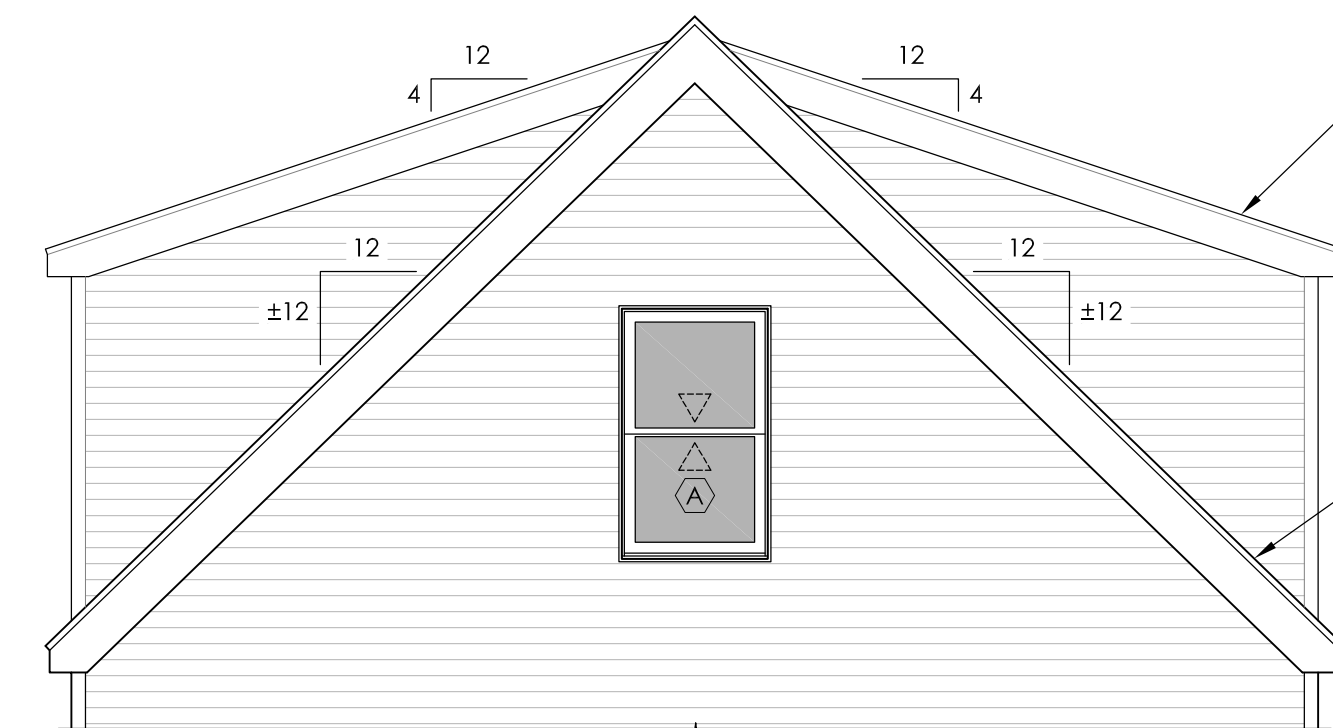


SHED DORMER, TYP.

CLAPBOARD WALL FINISH
TO MATCH EXISTING

COMMON ROOF, TYP.

3 WEST ELEVATION
Scale: 1/4" = 1'-0"



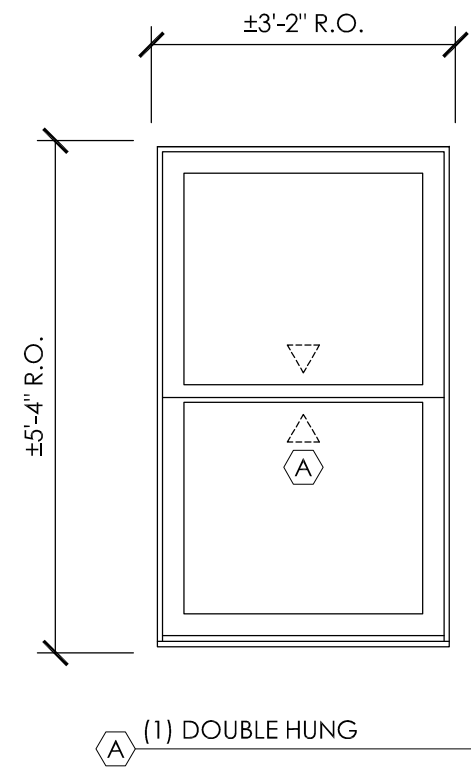
SHED DORMER, TYP.

COMMON ROOF, TYP.

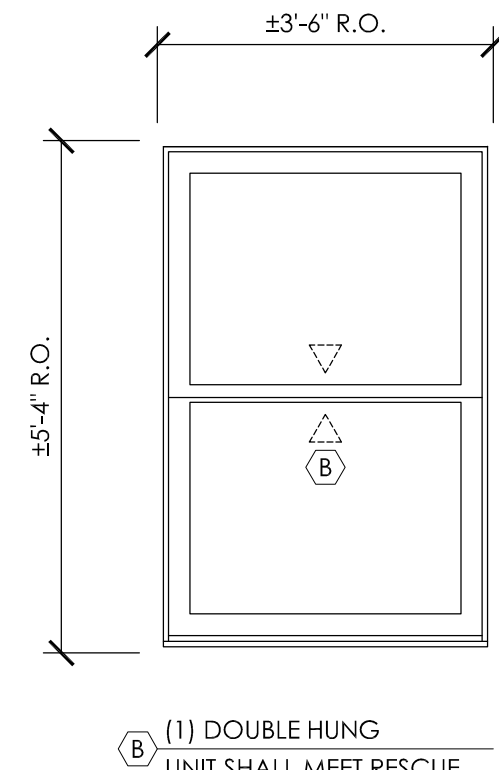
4 NORTH ELEVATION
Scale: 1/4" = 1'-0"

WINDOW NOTES:

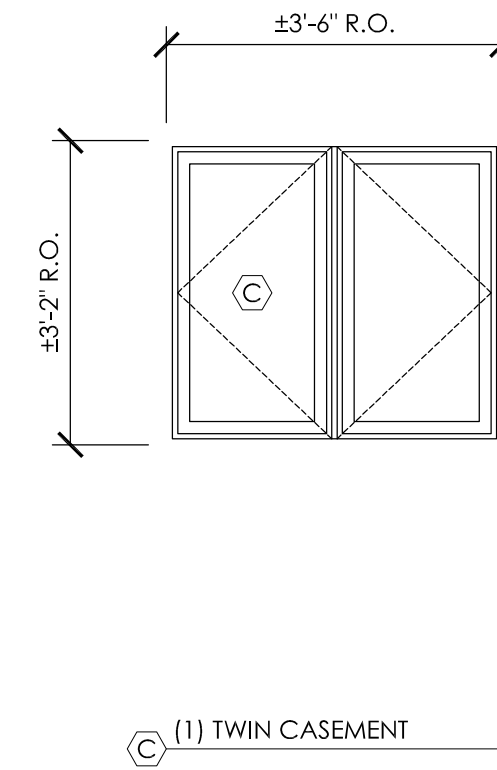
1. WINDOW MANUFACTURER TO BE DETERMINED.
2. ALL BEDROOMS SHALL CONTAIN A WINDOW MEETING RESCUE OPENING REQUIREMENTS. SEE UNIT 'B'.
3. WINDOW LAYOUT, TYPES, SIZES, MATERIAL, COLOR, FINISH, HARDWARE, TRIM TO BE CONFIRMED WITH BUILDING OWNER.
4. GLAZING: INSULATED GLASS WITH LOW-E COATING, TEMPERED GLAZING WHERE REQUIRED BY CODE, TYP.
5. EXTENSION JAMBS: FIELD BUILT BY GC AS REQUIRED.
6. SCREENS: ALL OPERABLE WINDOWS SHALL HAVE FULL SCREENS.
7. TYPICAL FLASHING: PAN FLASHING AT SILLS, DRIP FLASHING AT HEAD, SELF-ADHERED JAMB FLASHING.
8. SEE EXTERIOR ELEVATIONS FOR ALL WINDOW OPERATION.



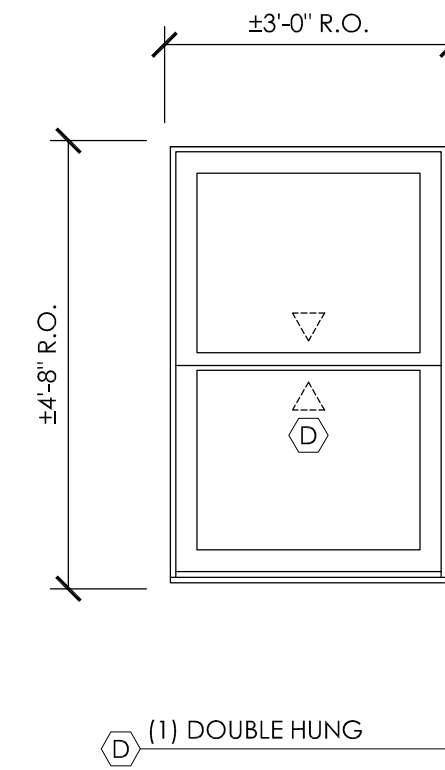
(A) (1) DOUBLE HUNG



(B) (1) DOUBLE HUNG
UNIT SHALL MEET RESCUE
OPENING REQUIREMENTS:
• SILL HEIGHT - 44" MAX.
• NET CLEAR OPENING AREA - 5.7 SF MIN.
• NET CLEAR OPENING HEIGHT - 24" MIN.
• NET CLEAR OPENING WIDTH - 20" MIN.



(C) (1) TWIN CASEMENT



(D) (1) DOUBLE HUNG

5 WINDOW SCHEDULE
Scale: 1/2" = 1'-0"