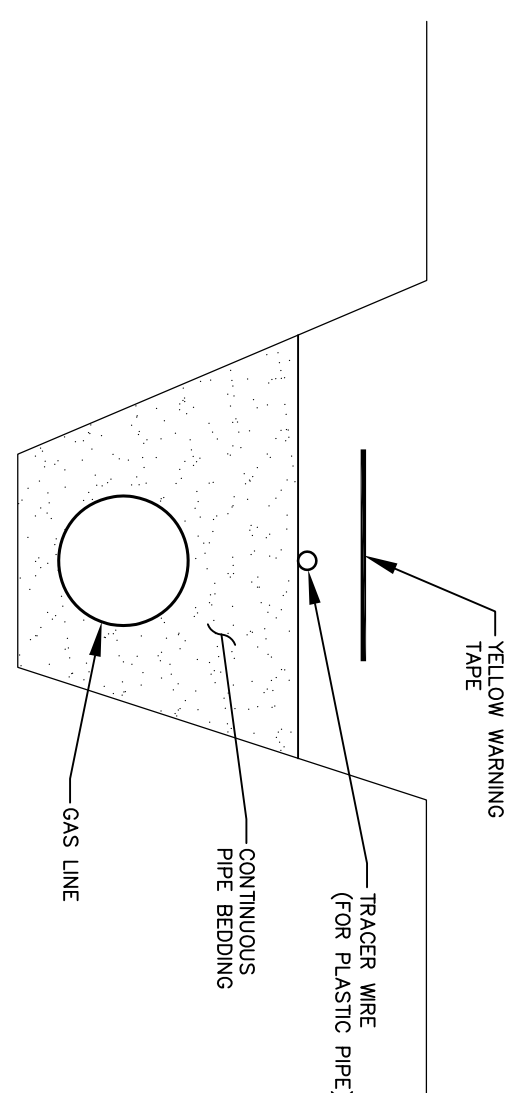
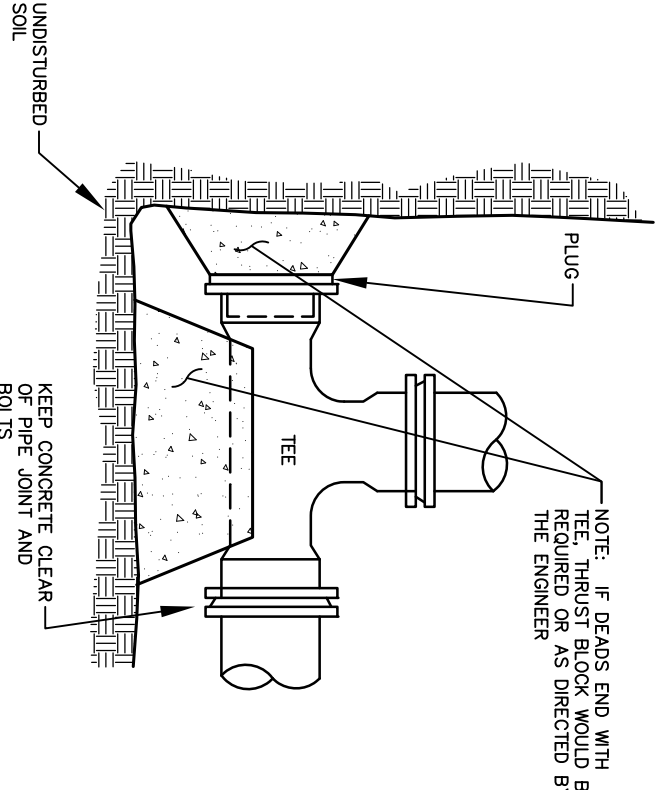


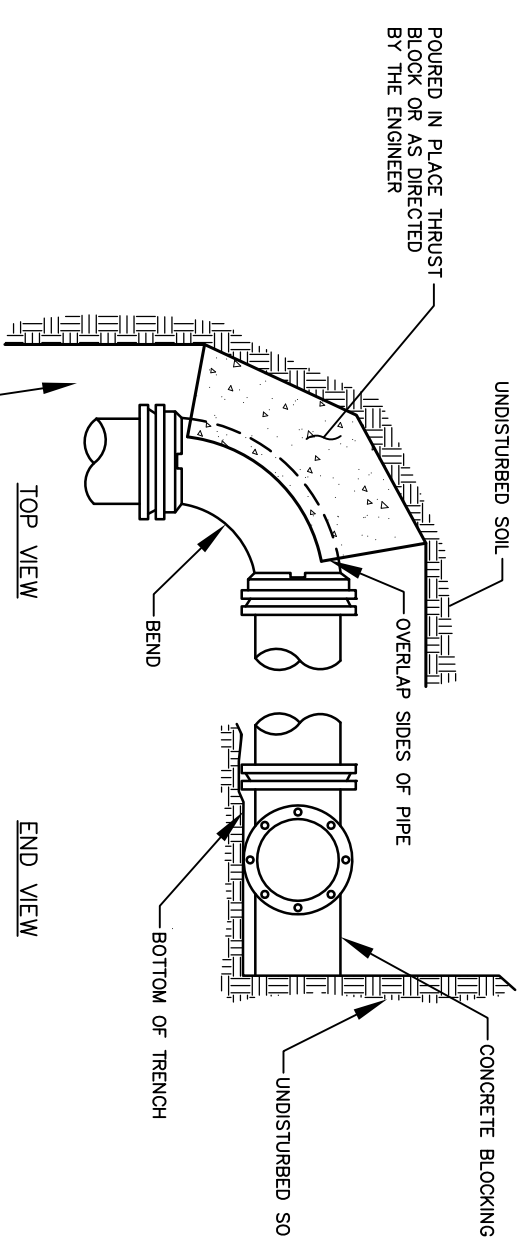
UNDERGROUND GAS BEING INSTALLATION NOTE:
 COVER DEPTH - SHOULD BE INSTALLED AT LEAST 18" OF COVER CAN BE 12" IN AREAS WHERE EXTERNAL DAMAGE IS NOT LIKELY. IF LESS THAN 12" PROVIDE A PROTECTIVE CONDUIT OR BRIDGING. ALWAYS USE WARNING TAPE AND TRACER WIRE FOR PLASTIC PIPING.
 BACK FILLING TRENCHES - PIPE SHOULD HAVE A FIRM CONTINUOUS BEARING ON TRENCH BED. TRENCHES SHOULD BE BACKFILLED WITH SAND OR GRAVEL. BACKFILLING OPERATIONS SHOULD BE TAKEN TO PREVENT THE PIPE FROM FLOATING UP IN THE TRENCH. COORDINATE ALL INSTALLATIONS WITH UTIL.



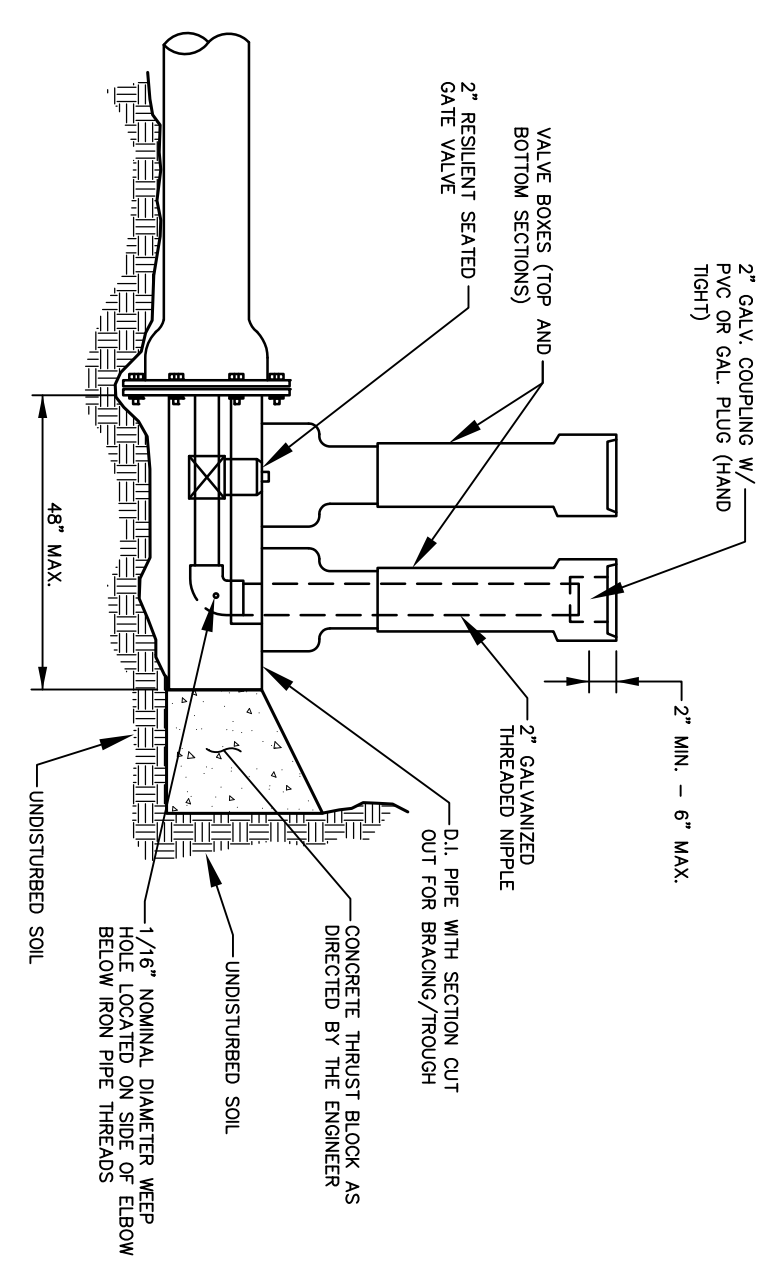
GAS LINE TRENCH DETAIL
NOT TO SCALE



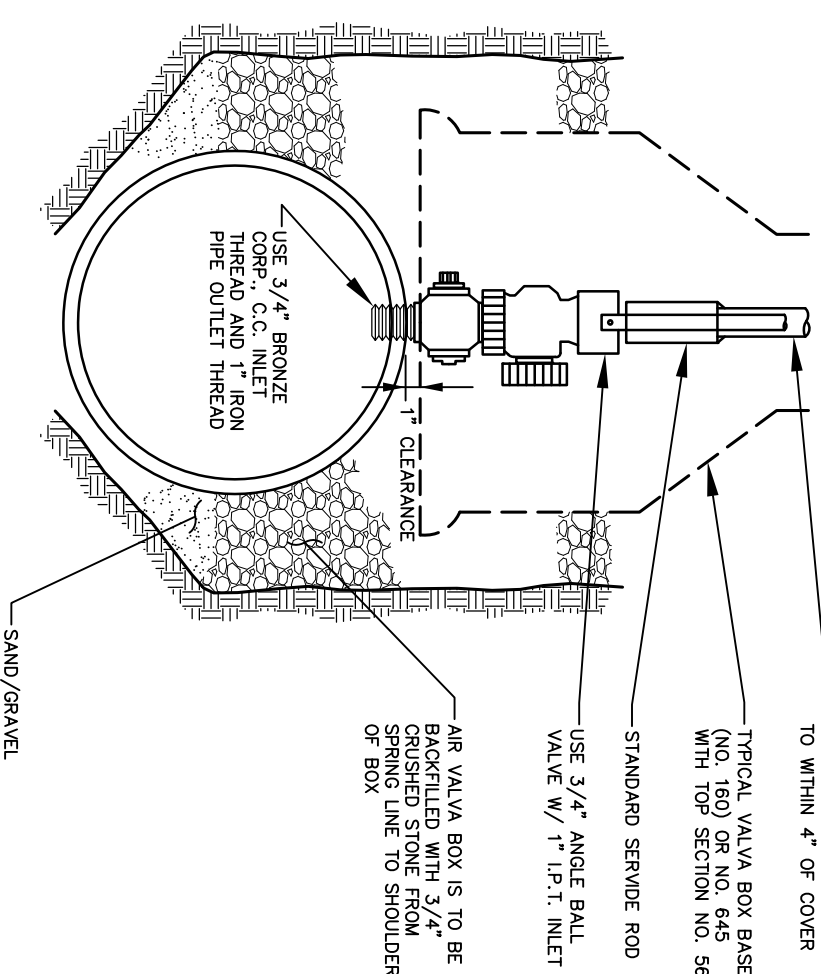
STANDARD TEE BLOCKING
NOT TO SCALE



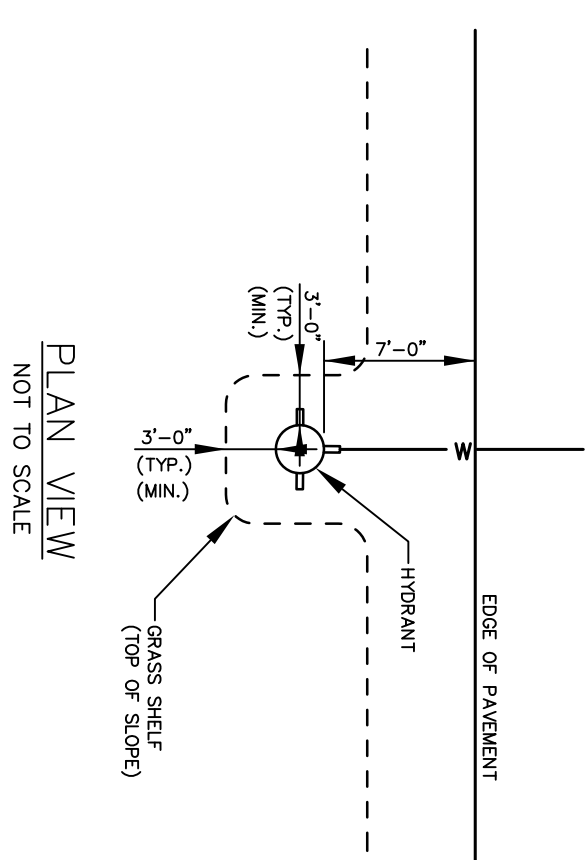
STANDARD BEND BLOCKING
NOT TO SCALE



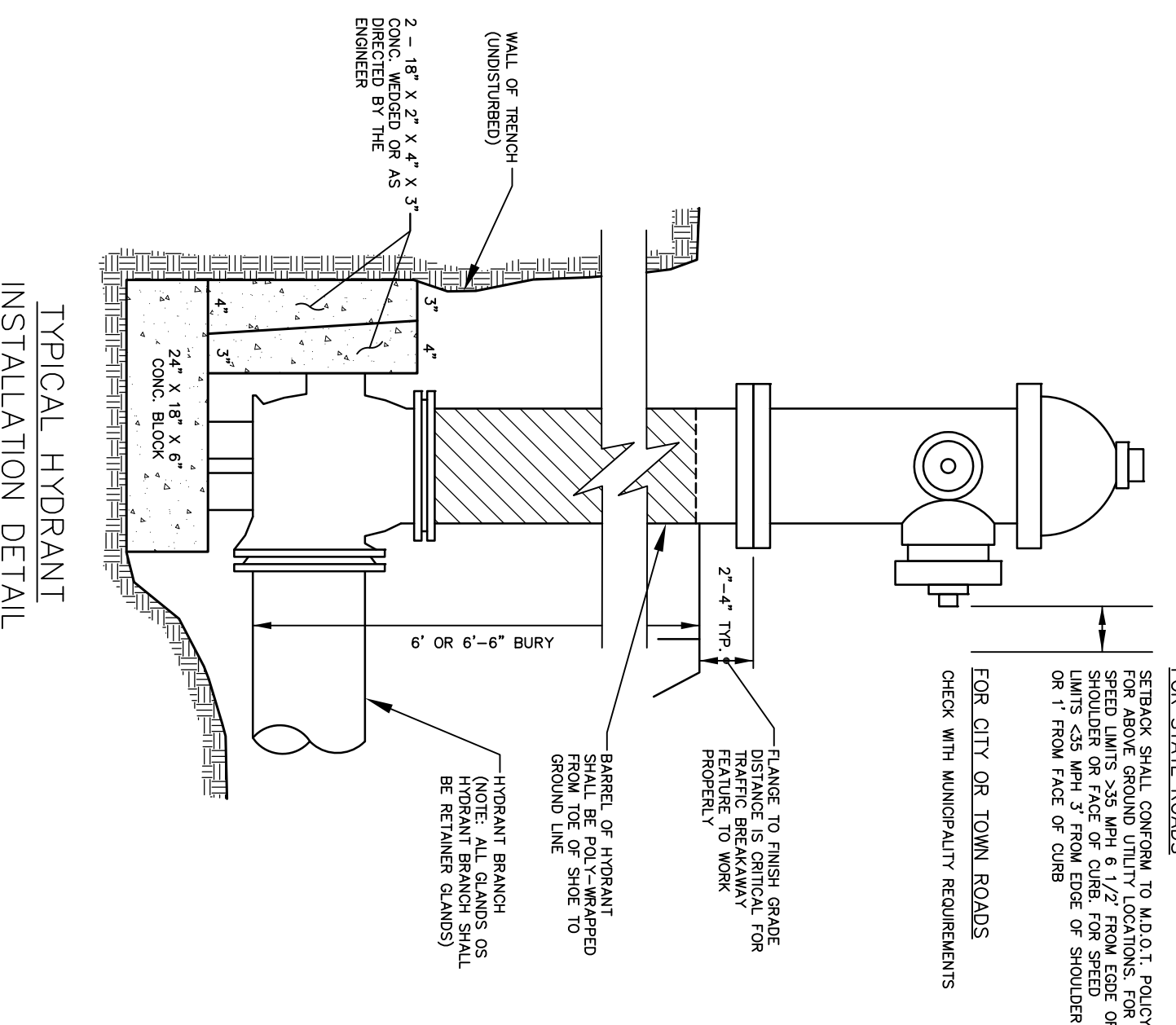
STANDARD 2" BLOW OFF
NOT TO SCALE



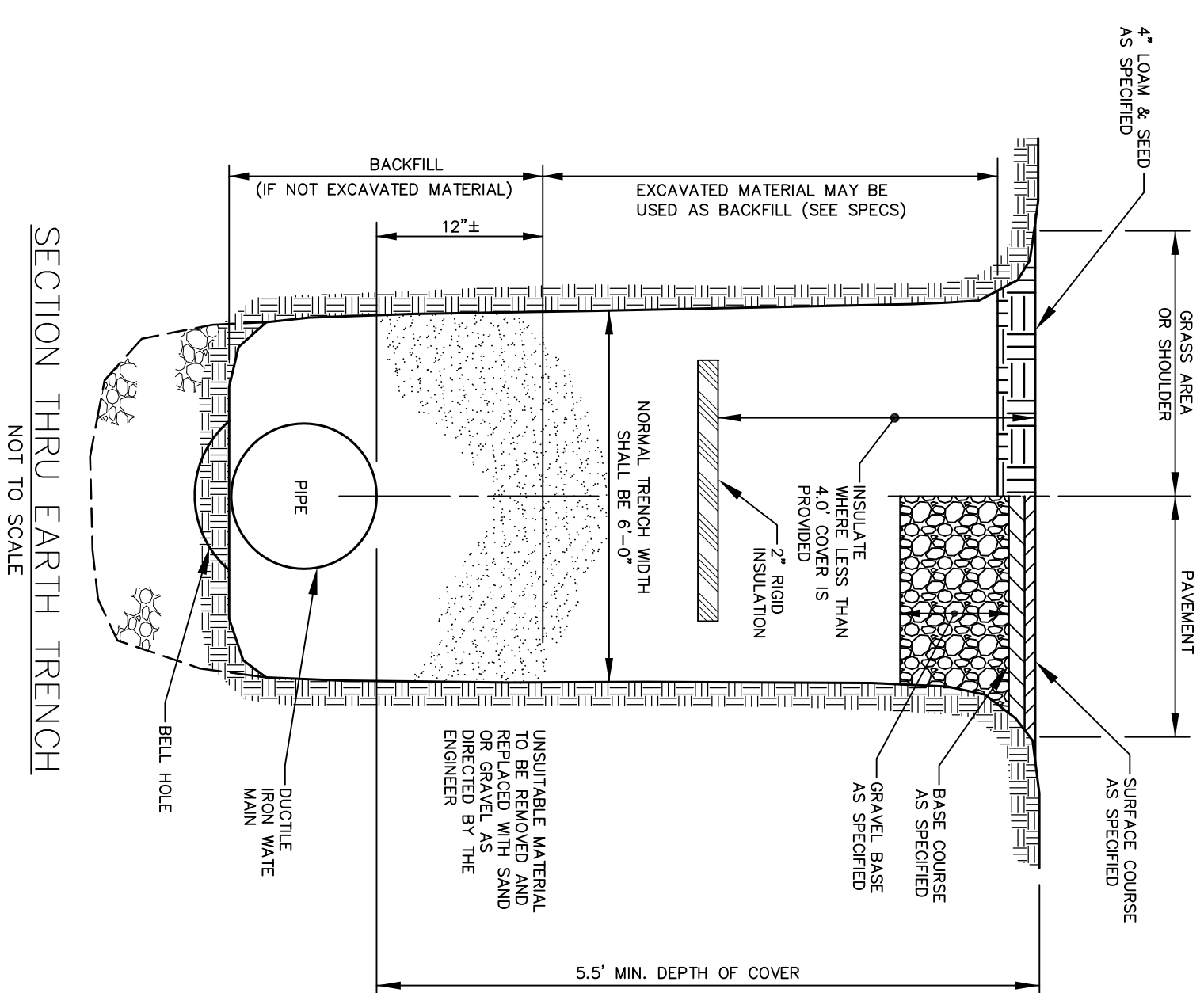
TYPICAL AIR VALVE (1")
NOT TO SCALE



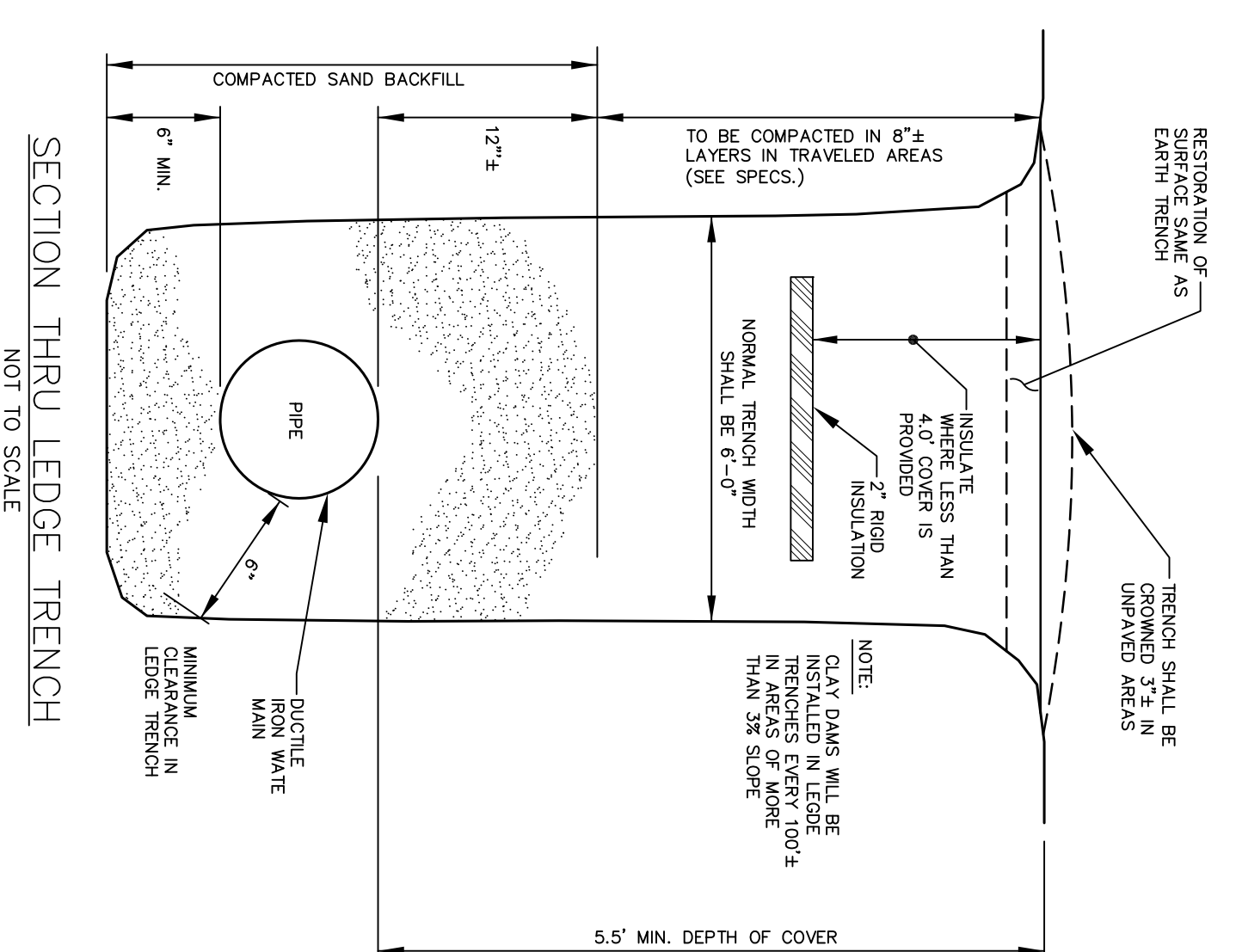
PLAN VIEW
NOT TO SCALE



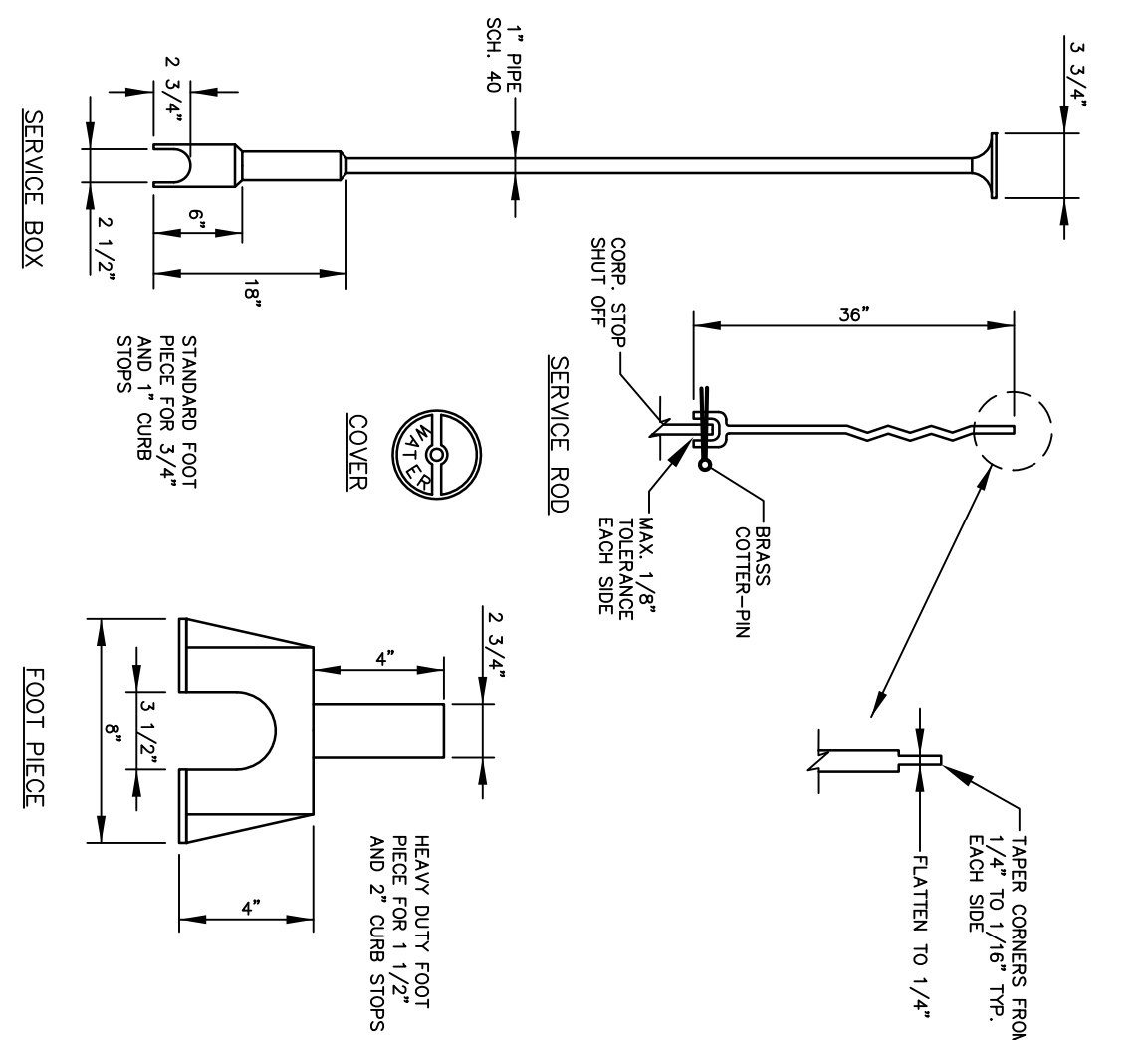
TYPICAL HYDRANT INSTALLATION DETAIL
NOT TO SCALE



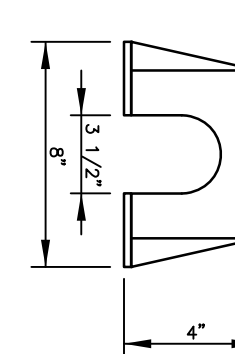
SECTION THRU EARTH TRENCH
NOT TO SCALE



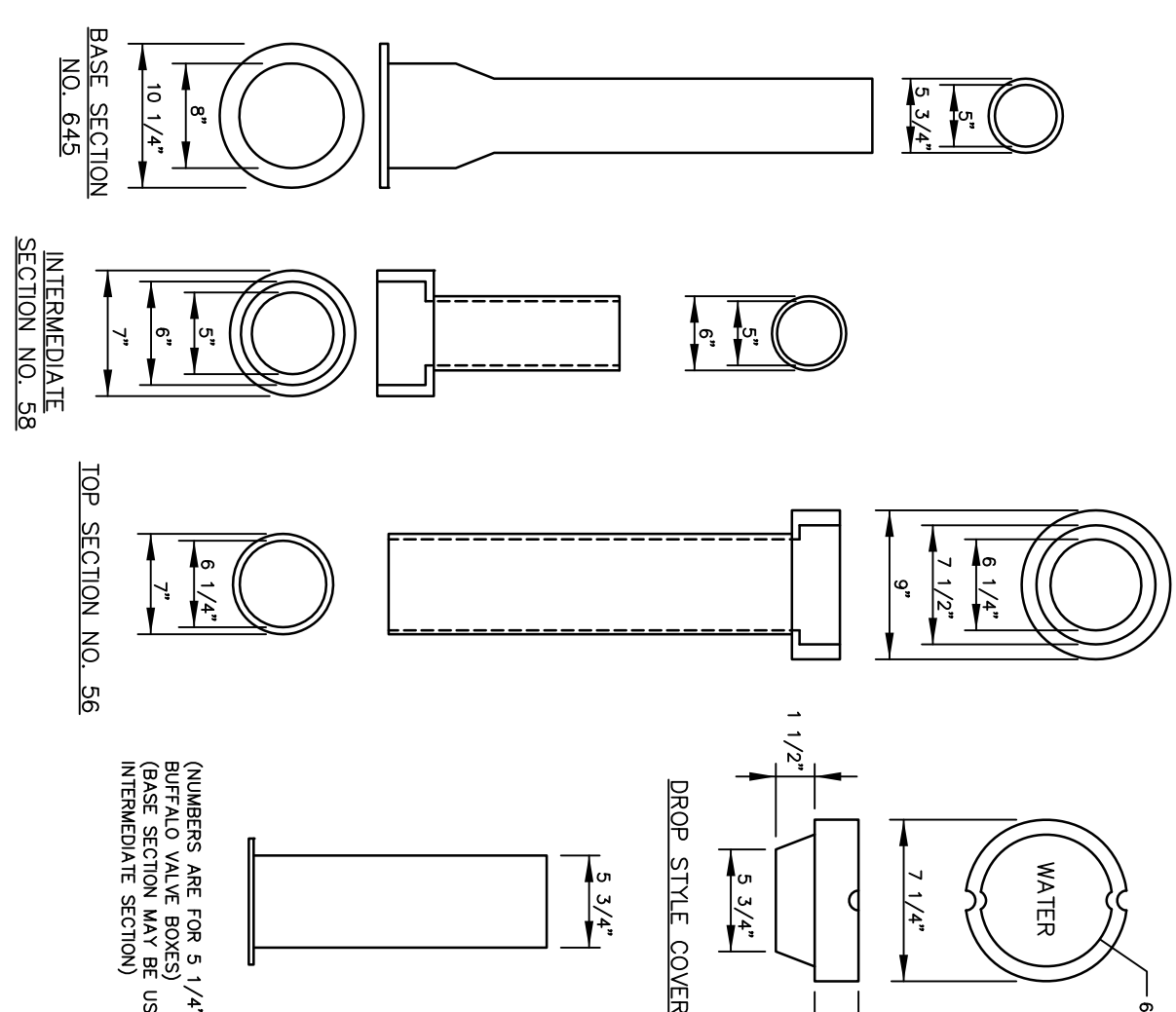
SECTION THRU LEDGE TRENCH
NOT TO SCALE



SERVICE BOX
NOTE: ANY DESIGN OF SERVICE BOX REQUIRES A COMPANING & T. THREADED PIPE



FOOT PIECE



VALVE BOX & COVER
NOT TO SCALE

ALL WATER LINE WORK TO MEET PORTLAND WATER DISTRICT STANDARDS

THIS PLAN IS FOR REVIEW PURPOSES ONLY AND IS NOT INTENDED FOR CONSTRUCTION OR RECORDING

PROJECT NUMBER:	41041
DATE:	5/1/18
SCALE:	AS NOTED
DATE:	MAY 1, 2018
PROJECT NAME:	PROPOSED CAPSIC MEADOWS SUBDIVISION
PROJECT ADDRESS:	130 BANCROFT STREET, PORTLAND, MAINE 04102
DESIGNED BY:	WB GROUP, INC
PROJECT LOCATION:	130 BANCROFT STREET, PORTLAND, MAINE 04102

NCS
 SURVEYING • ENGINEERING • LAND PLANNING
 INCORPORATED
 381 PANE ROAD, SCARBOROUGH, MAINE 04074
 207.883.1000
 www.northeastcivilsolutions.com

WB GROUP, INC
 130 BANCROFT STREET, PORTLAND, MAINE 04102