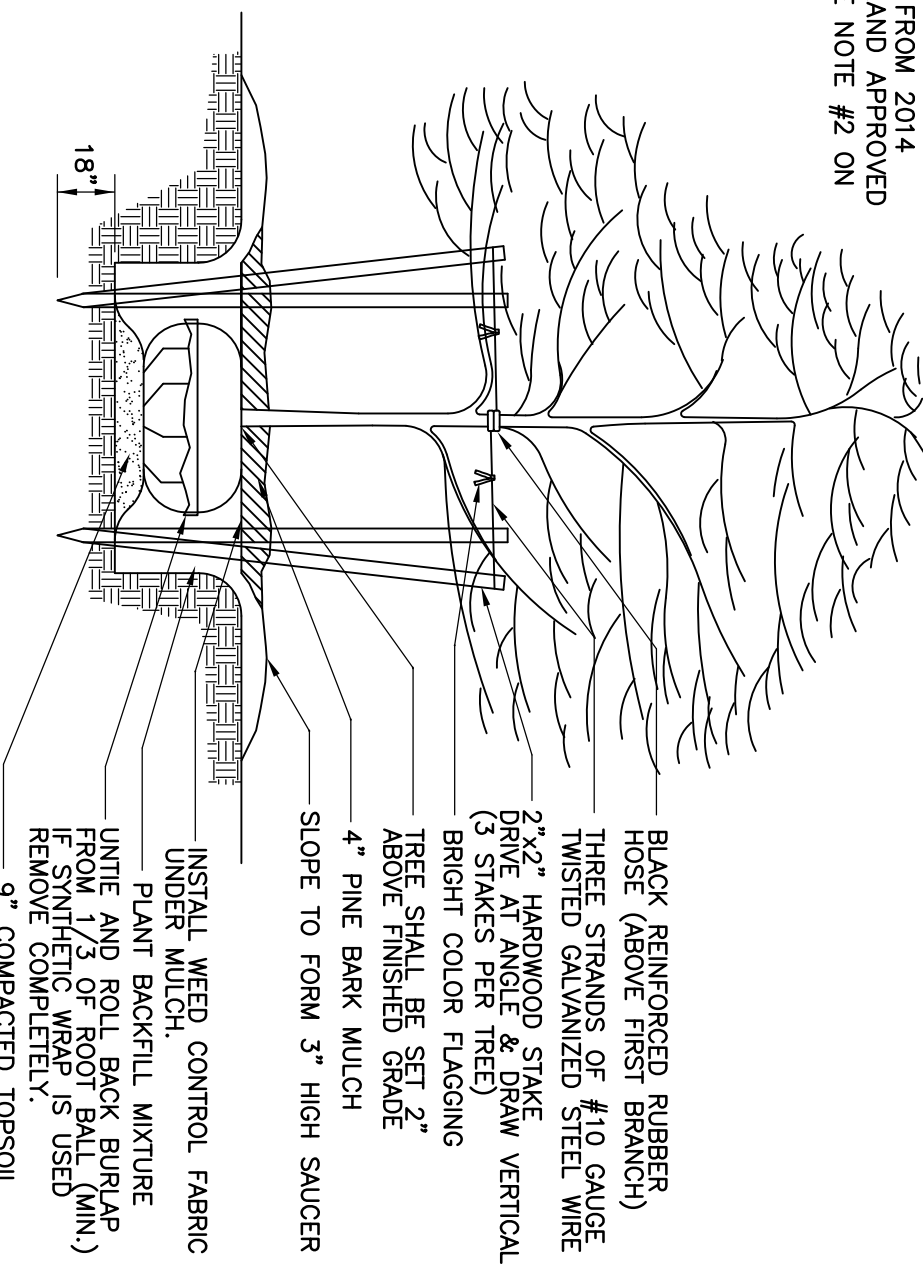


TYPE "B" UNDERDRAIN INSTALLATION DETAIL - ALTERNATIVE "A"

PLANTING SCHEDULE			
QUANTITY	BOTANICAL NAME	COMMON NAME	SIZE
14*	ACER RUBRUM 'RED SUNSET'*	RED SUNSET MAPLE*	6'-7"

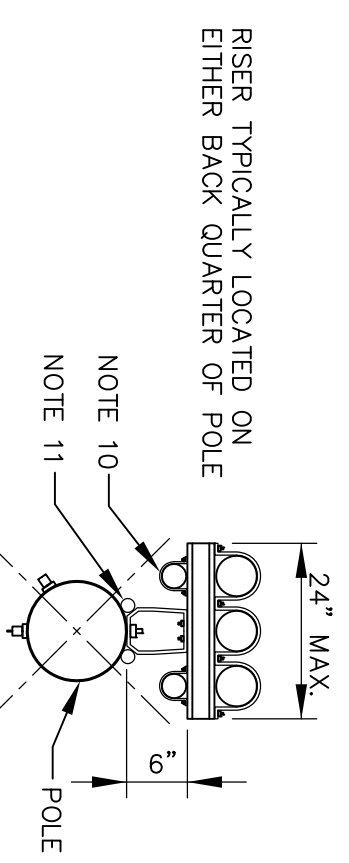
\* VARY SPECIES FROM 2014 CITY OF PORTLAND APPROVED TREE LIST (SEE NOTE #2 ON SITE PLAN)



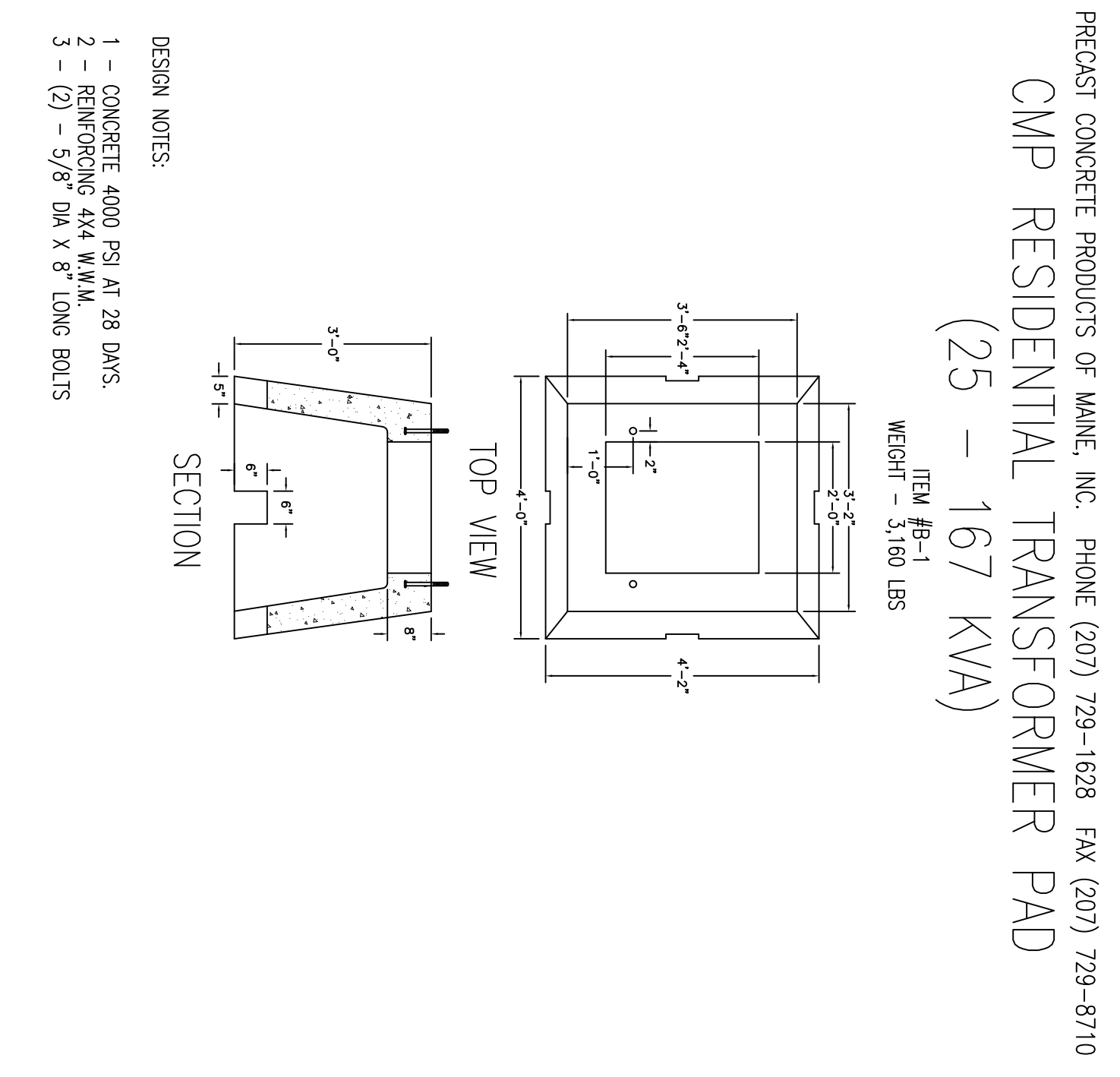
TYPICAL STREET TREE PLANTING

TRAFFIC SIGNS							
IDENTIFICATION NUMBER	SIGN HEIGHT	SIGN WIDTH	POST PER SIGN	TEXT	NUMBER OF SIGNS REQ'D.	NOV. AREA TOTAL AREA	REMARKS
R1-1	30"	30"	1	STOP	1	6.25	6.25 PER MUTCD

NOTE: ALL SIGNS SHALL CONFORM TO MUTCD STANDARDS



TYPICAL RISER DETAIL

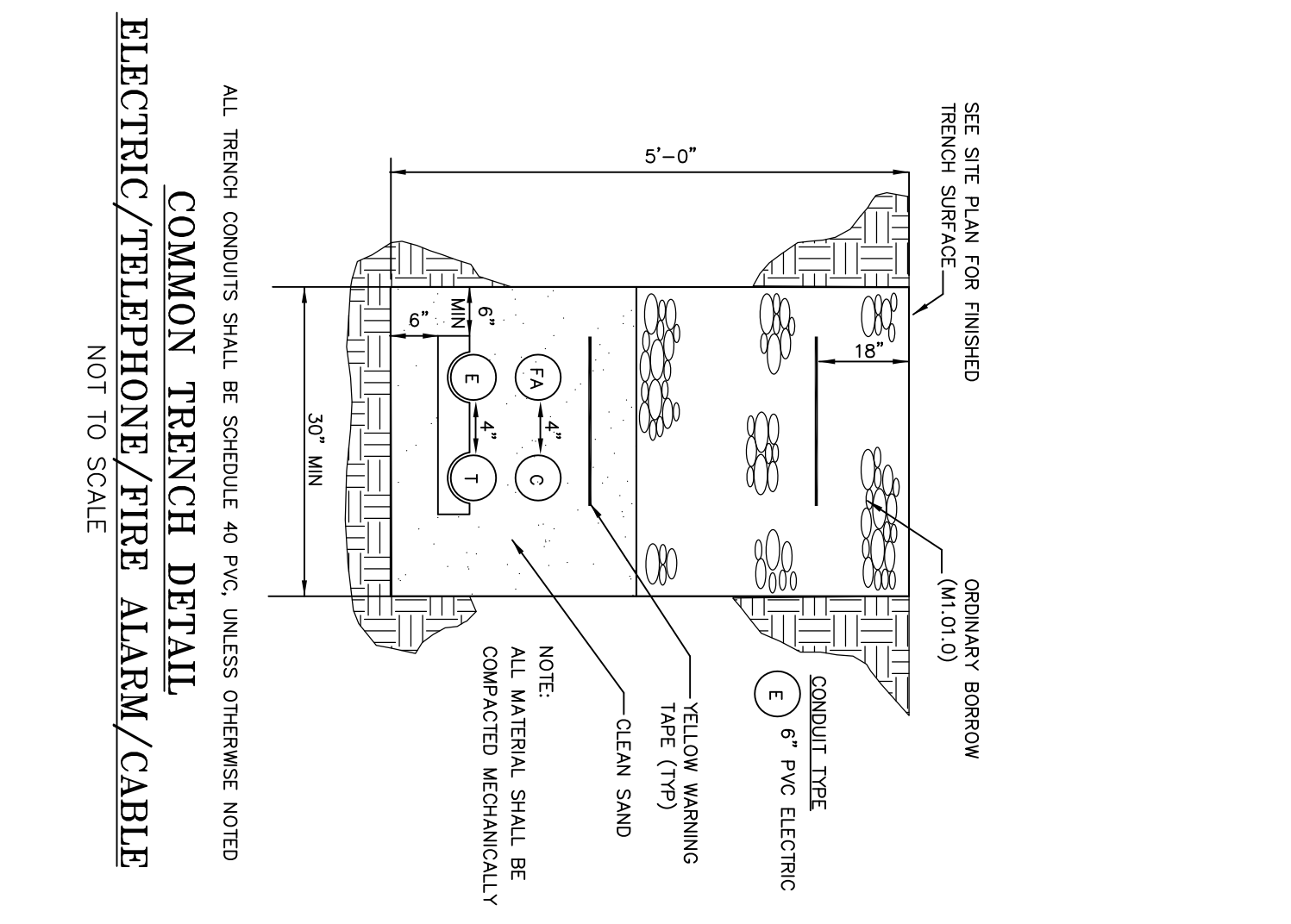
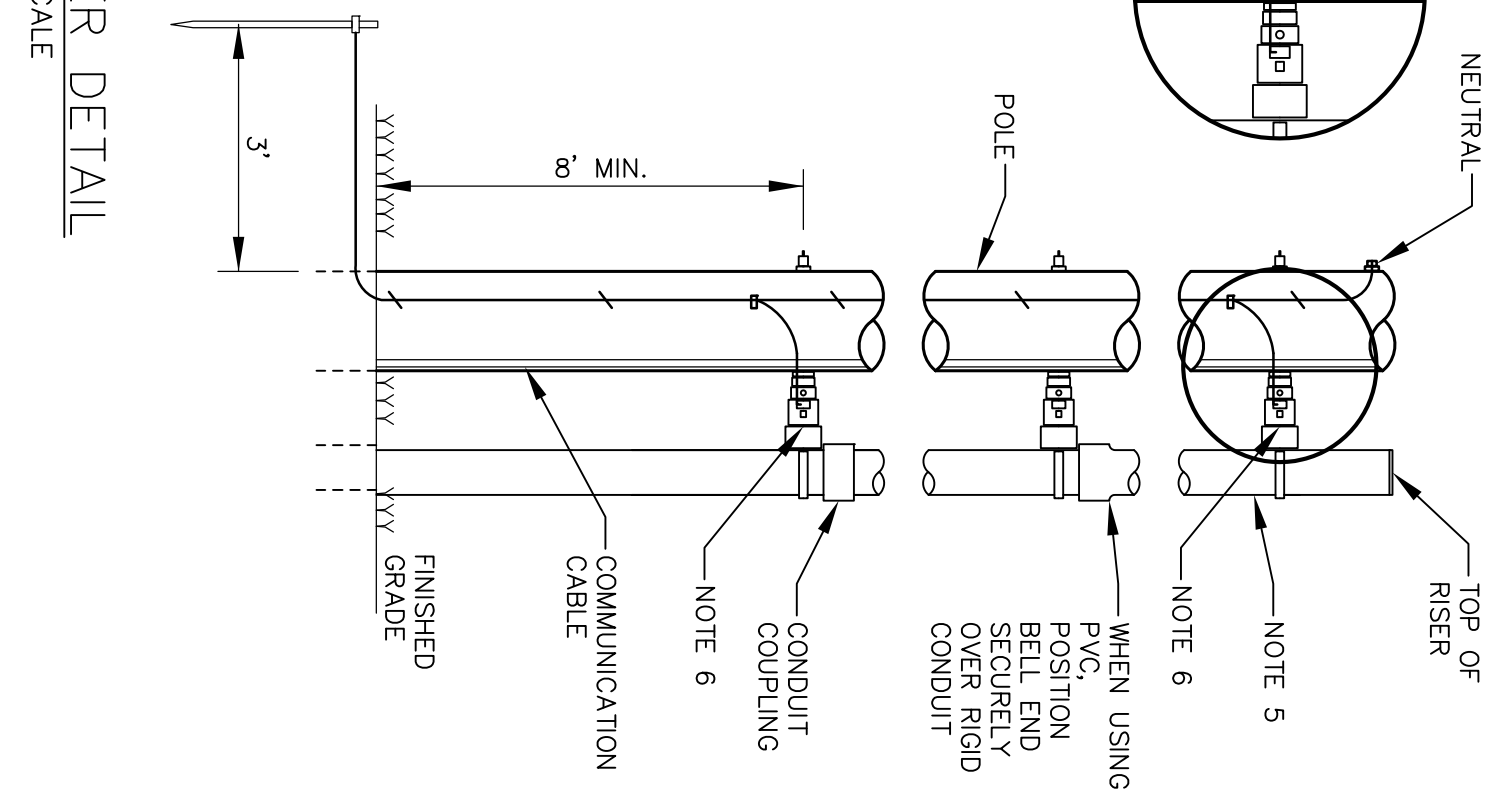


PRECAST CONCRETE PRODUCTS OF MAINE, INC. PHONE (207) 729-1628 FAX (207) 729-8710  
CMP RESIDENTIAL TRANSFORMER PAD  
(25 - 167 KVA)  
ITEM #B-1  
WEIGHT - 3,160 LBS

DESIGN NOTES:  
1 - CONCRETE 4000 PSI AT 28 DAYS.  
2 - REINFORCING 4X4 W.W.M.  
3 - (2) - 5/8" DIA X 8" LONG BOLTS

- NOTES:
- STAND OFF BRACKETS ARE REQUIRED WHEN MORE THAN ONE CONDUIT PER UTILITY IS TO BE INSTALLED ON A POLE.
  - ALL THREE PHASE PRIMARY RISERS, WHETHER STAND OFF BRACKETS ARE USED OR NOT, SHALL BE RIGID STEEL FOR THE FIRST SECTION.
  - ON SINGLE PHASE PRIMARY, SECONDARY AND SERVICE URD RISERS USING STAND OFF BRACKETS, RIGID STEEL OR SCHEDULE 80 MAY BE USED.
  - WHERE RIGID STEEL OR SCHEDULE 80 PVC IS USED FOR THE RISER, ONE BRACKET SHALL BE USED TO SUPPORT EACH SECTION OF CONDUIT UP TO 10 FEET IN LENGTH. EACH BRACKET IS TO BE PLACED JUST BELOW THE RISER CONDUIT COUPLING.
  - CONDUIT SECTIONS FOR A SINGLE PHASE OR THREE PHASE RISERS USING STAND OFF BRACKETS SHALL BE RIGID STEEL OR SCHEDULE 80 PVC CONDUIT ONLY (SEE NOTE #2), WITH THE EXCEPTION THAT SCHEDULE 40 PVC SUNLIGHT RESISTANT CONDUIT MAY BE USED FOR THE TOP SECTION OF THE RISER (NOT LONGER THAN 10'). IF TOP SECTION IS LONGER THAN 24' IT MUST BE SUPPORTED WITH A MINIMUM OF ONE BRACKET AND MUST BE SUPPORTED WITH A MINIMUM SCHEDULE 40 PVC AND LONGER THAN 72' IT MUST BE SUPPORTED BY NO FEWER THAN TWO STAND OFF BRACKETS.
  - WHERE PVC IS USED FOR THE RISER, EACH STAND OFF BRACKET SHALL BE RIGID STEEL OR SCHEDULE 80 PVC CONDUIT. WHERE STEEL IS USED FOR THE RISER ONE STAND OFF BRACKET SUPPORTING THE STEEL IS REQUIRED TO BE GROUNDED.
  - SWEEPS, WHEN USED, ARE REQUIRED TO BE STEEL.
  - IF RISER IS ALL STEEL CONDUIT, INSTALL INSULATED GROUNDING BUSHING AT TOP OF RISER.
  - LOWEST BRACKET SHALL BE A MINIMUM OF 8 FEET ABOVE FINISHED GRADE.
  - ALTERNATE LOCATION FOR COMMUNICATION CABLE IF RUN IN METAL CONDUIT OR SCHEDULE 80.
  - COMMUNICATION CABLE MAY BE ATTACHED DIRECTLY TO POLE ADJACENT TO BRACKETS.

TYPICAL RISER DETAIL



COMMON TRENCH DETAIL  
ELECTRIC/TELEPHONE/FIRE ALARM/CABLE  
ALL TRENCH CONDUITS SHALL BE SCHEDULE 40 PVC UNLESS OTHERWISE NOTED  
NOTE: ALL MATERIAL SHALL BE COMPACTED MECHANICALLY  
YELLOW WARNING TAPE (TYP)  
CLEAN SAND  
NOTE: ALL MATERIAL SHALL BE COMPACTED MECHANICALLY

PAVEMENT MARKING NOTES :

- ALL PAVEMENT MARKING WORDS AND SYMBOLS SHALL BE RETROREFLECTIVE WHITE AND SHALL CONFORM TO THE MUTCD AND MOTI ITEM 627.
- WORDS AND SYMBOLS SHALL BE CENTERED LATERALLY WITHIN THE LANE. THE LONGITUDINAL DIMENSION SHALL BE PARALLEL TO THE LANE.
- MULTI-WORD MESSAGES SHALL READ "UP"; THAT IS, THE FIRST WORD SHALL BE NEAREST THE APPROACHING DRIVER.
- THE WORD "ONLY" SHALL NOT BE USED WITH THROUGH OR COMBINATION ARROWS, AND SHALL NOT BE USED ADJACENT TO A BROKEN LANE LINE. A TURN ARROW SHALL PRECEDE THE WORD "ONLY". HOWEVER, THE SHAFTS OF THE ARROWS SHALL CONCOIDE.
- PREFORMED TAPE WORDS AND SYMBOLS SHALL BE PRE-CUT, EITHER BY THE MANUFACTURER OR THE CONTRACTOR.
- WRONG-WAY ARROWS SHALL NOT BE SUBSTITUTED FOR THROUGH ARROWS.
- LONGITUDINAL SPACING BETWEEN SUCCESSIVE WORDS AND/OR SYMBOLS SHOULD BE AT LEAST 4 TIMES THE HEIGHT OF THE LARGEST CHARACTER.

THIS PLAN IS FOR REVIEW PURPOSES ONLY AND IS NOT INTENDED FOR CONSTRUCTION OR RECORDING

Number	By	Date	Change
2	SJA	5/11/18	SUBMITTED FOR PRELIMINARY SITE PLAN/SUBDIVISION REVIEW
1	SJA	5/4/18	SUBMITTED FOR WEP TIER 1 REVIEW

CONSTRUCTION DETAILS - SHEET 4

Project Name and Location:  
PROPOSED CAPSIC MEADOWS SUBDIVISION  
130 BANCROFT STREET, PORTLAND, MAINE 04102

Prepared For:  
WB GROUP, INC  
130 BANCROFT STREET, PORTLAND, MAINE 04102

Surveying • Engineering • Land Planning  
Northeast Civil Solutions, Inc.  
381 PANE ROAD, SCARBOROUGH, MAINE 04074  
Tel: 207.853.1000 Fax: 207.853.1001  
www.northeastcivilsolutions.com