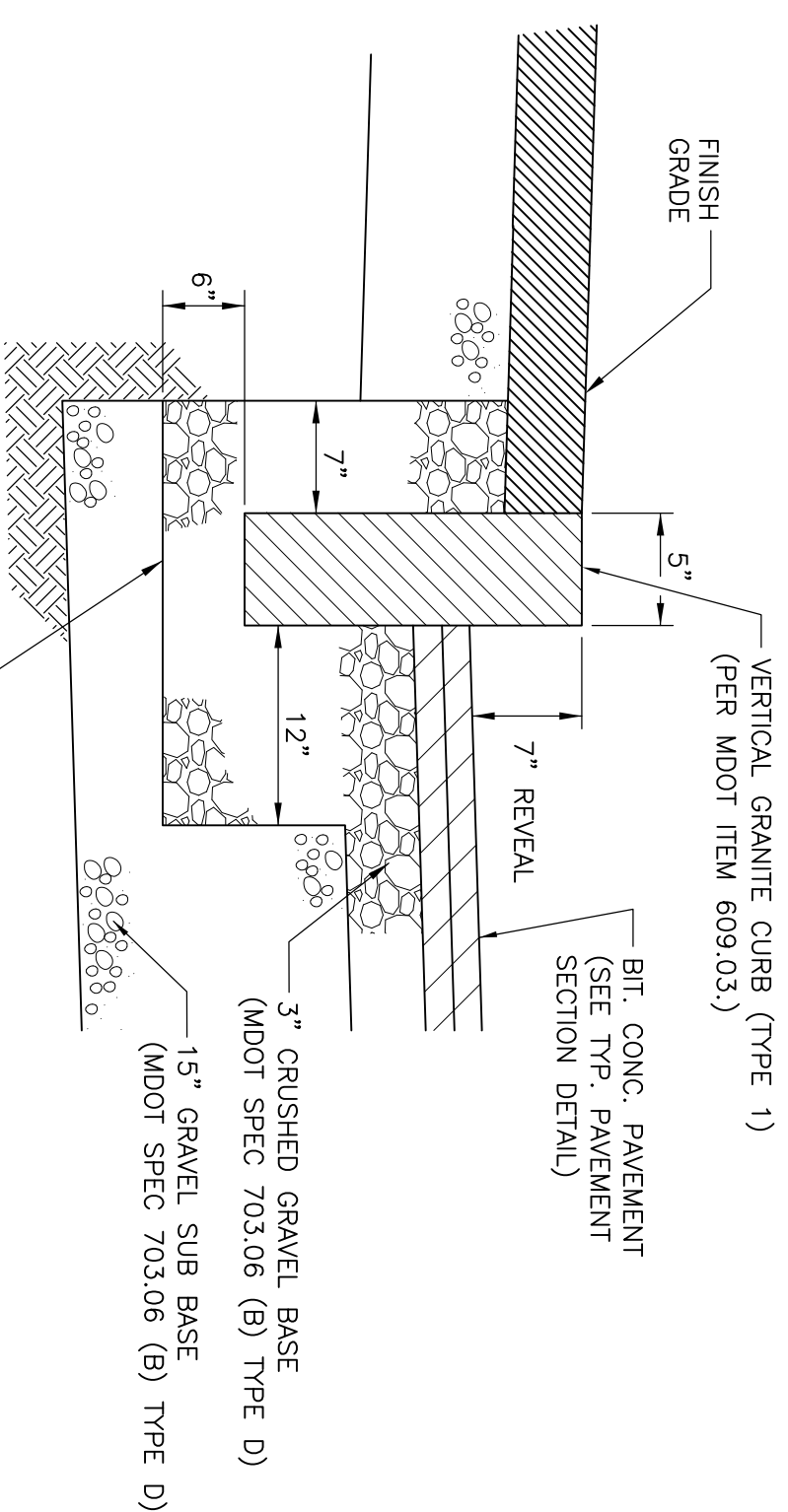
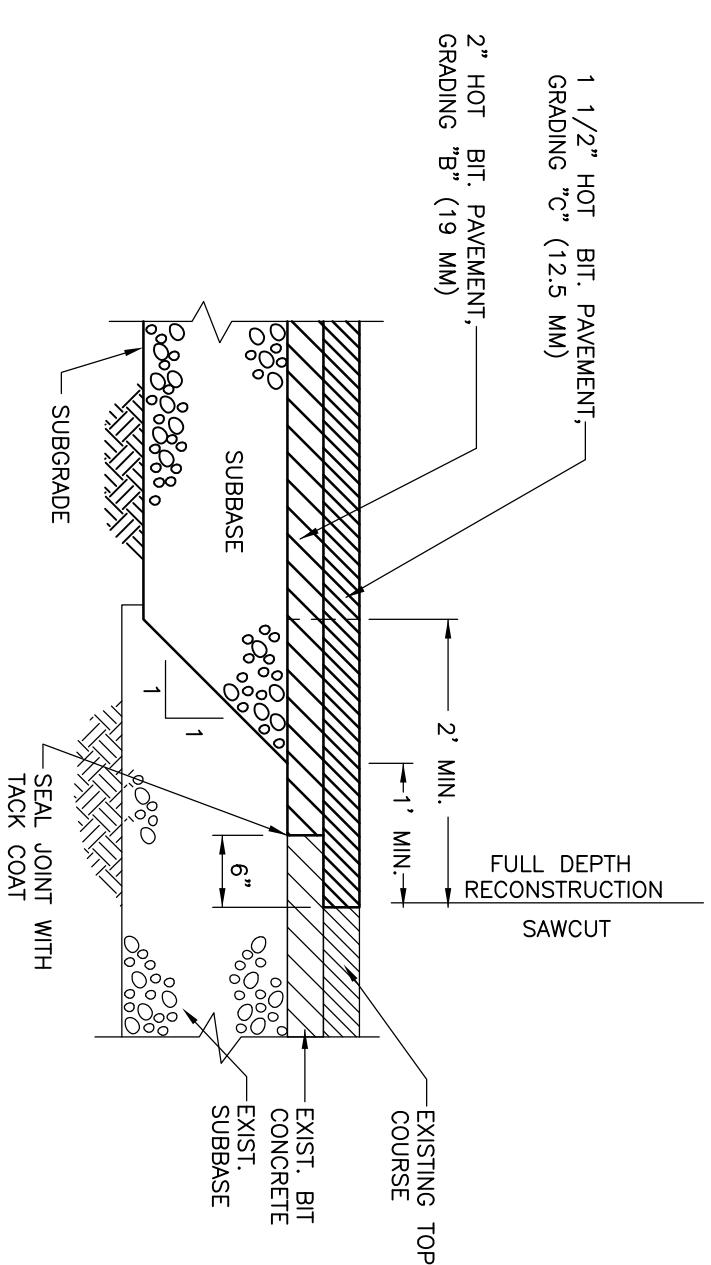


PLAN VIEW



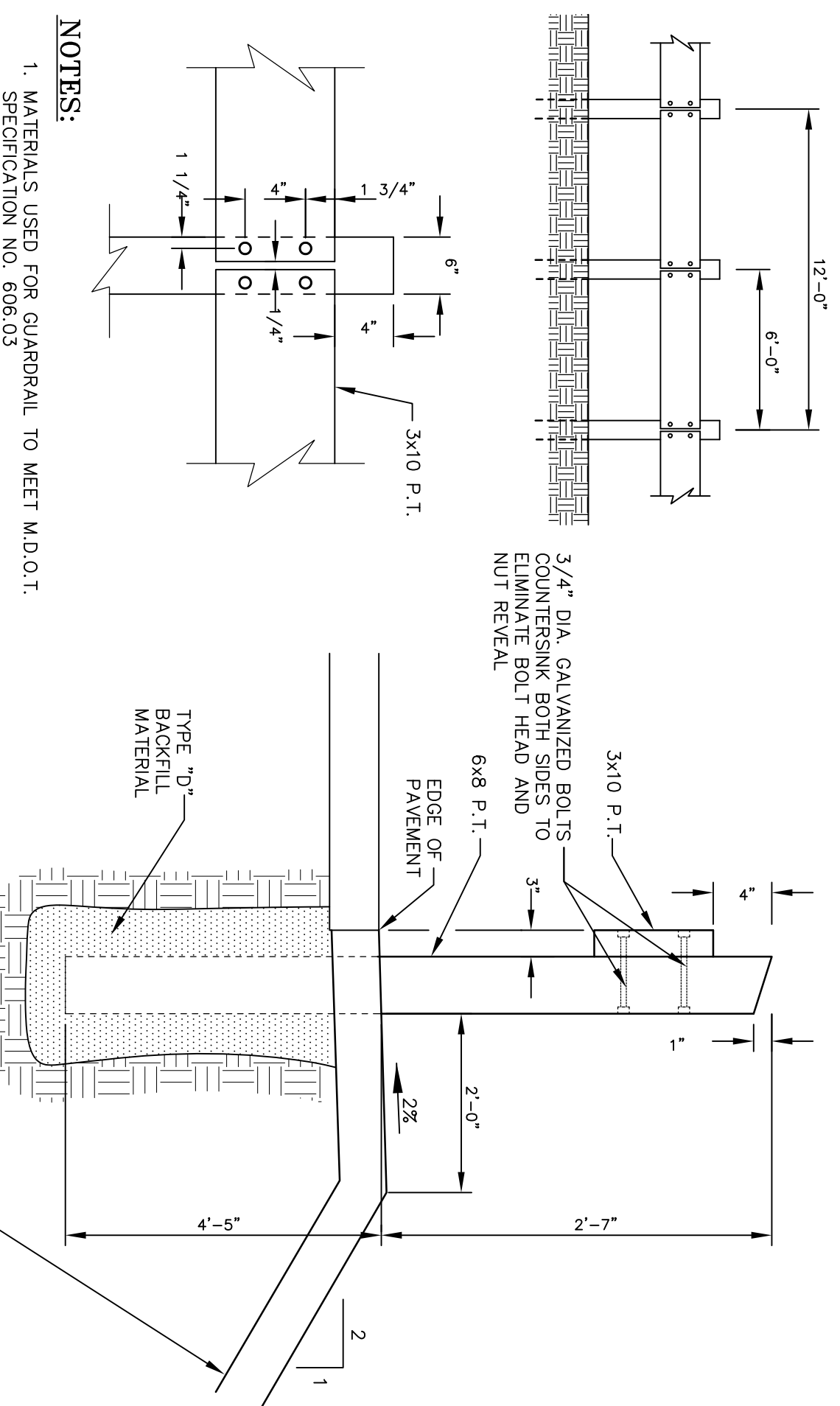
VERTICAL GRANITE CURB DETAIL

N.T.S.



SAWCUT & PAVEMENT MATCH DETAIL

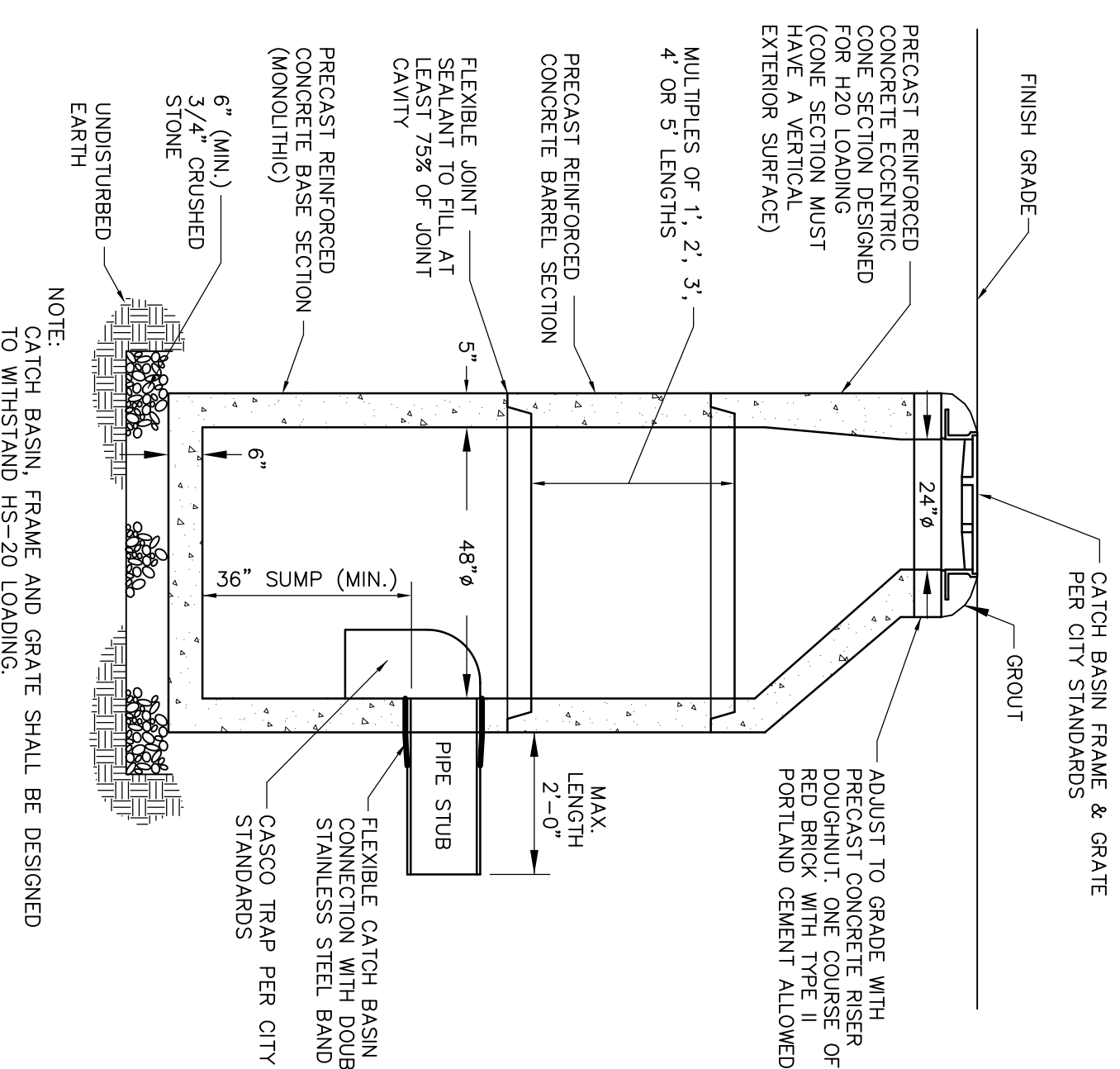
N.T.S.



PRESSURE TREATED WOOD GUARDRAIL

N.T.S.

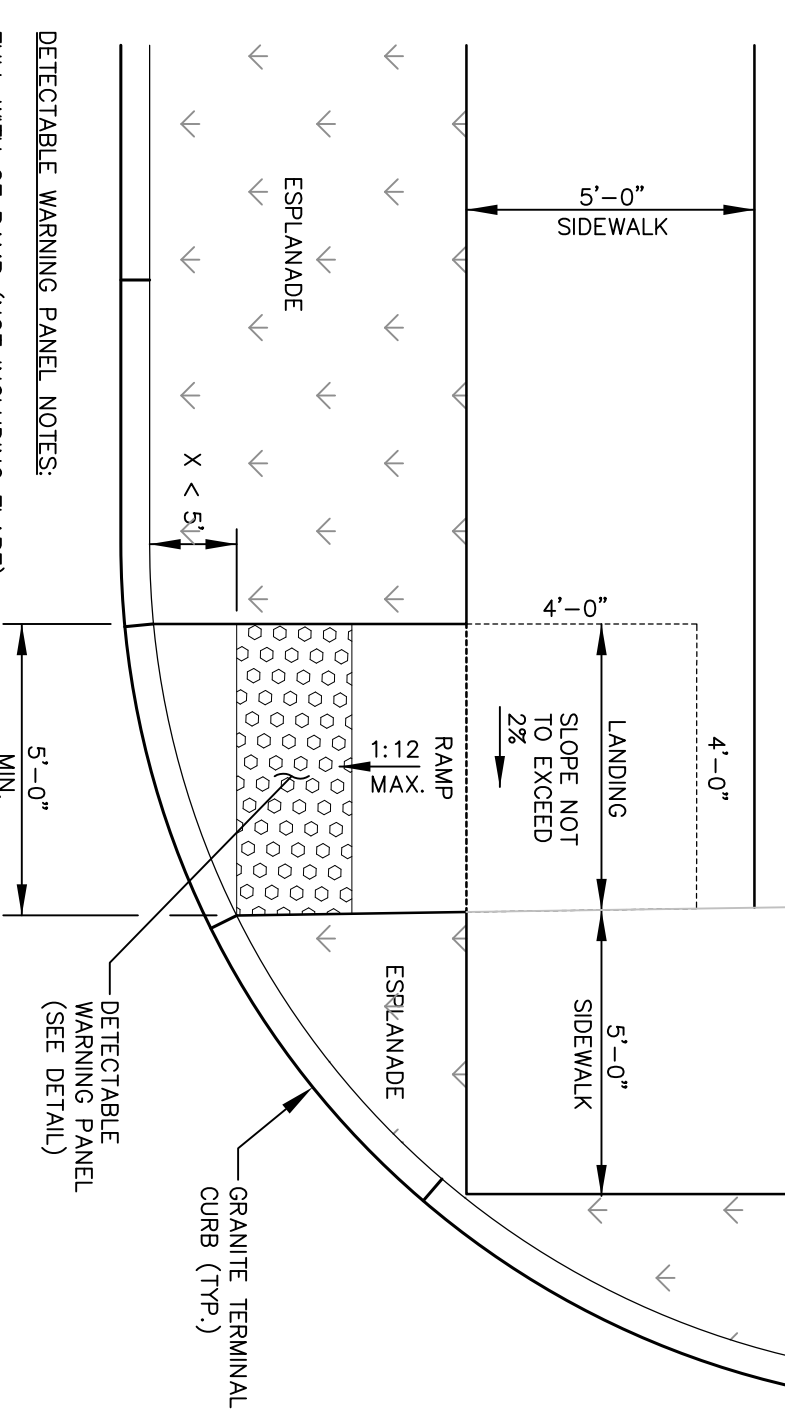
- NOTES:**
1. MATERIALS USED FOR GUARDRAIL TO MEET M.D.O.T. SPECIFICATION NO. 606.03
 2. WHEN SET IN HOLES, POSTS SHALL BE ON A STABLE FOUNDATION AND THE SPACE AROUND THE POSTS BACKFILLED WITH SUITABLE MATERIAL, THROUGHLY TAMPED.



PRECAST CONCRETE CATCH BASIN DETAIL

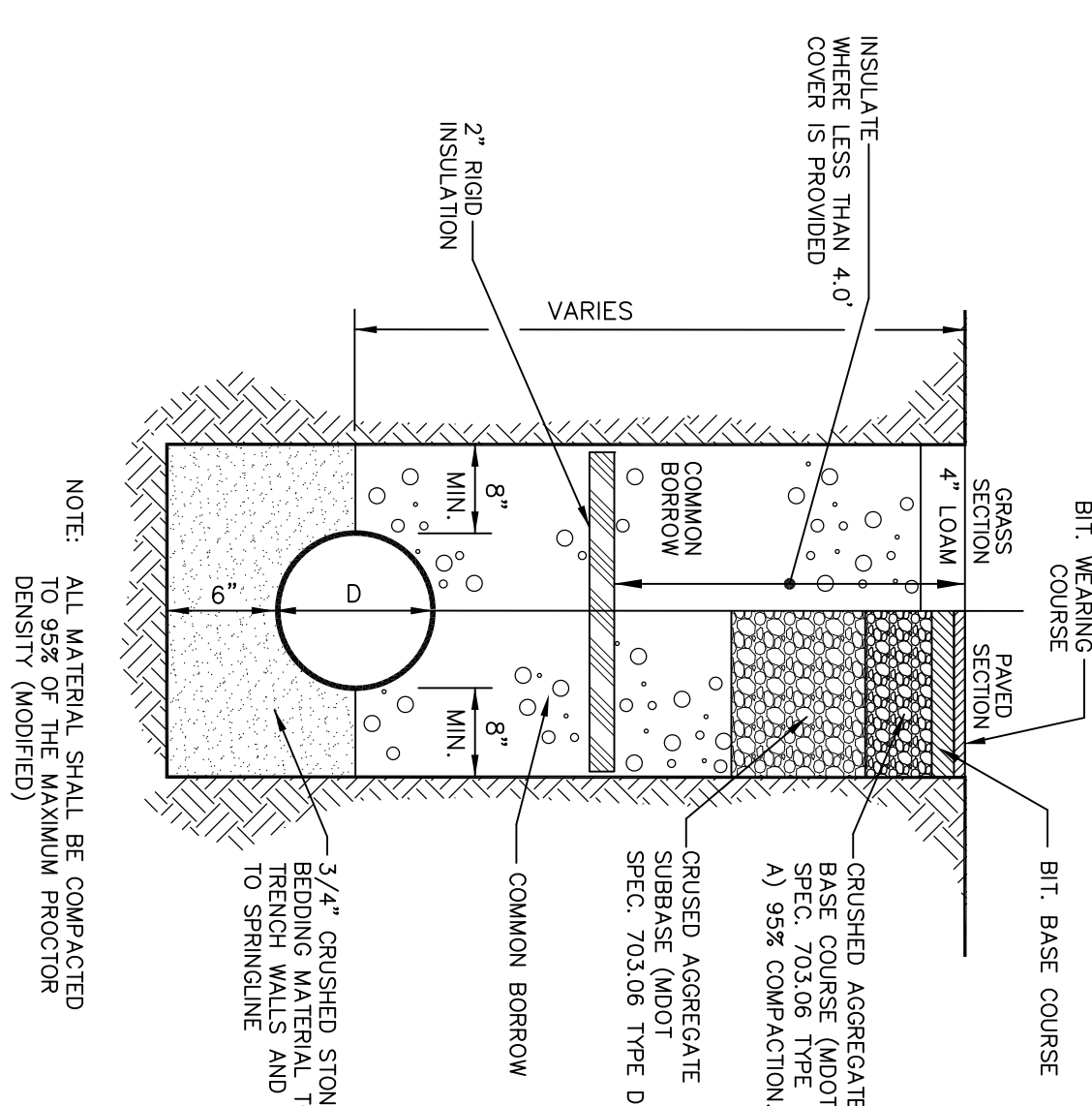
N.T.S.

- NOTES:**
- ALL RAMPS SHALL COMPLY WITH ADA STANDARDS.
 - LANDING AREA MAY BE REQUIRED BASED ON SIDEWALK DIMENSIONS.
 - GRANITE CURB ADJACENT TO RAMP SHALL BE FLUSH WITH STREET.
 - SEWAGE MATERIAL PER CITY SIDEWALK MATERIAL POLICY.



SIDEWALK LAYOUT DETAIL

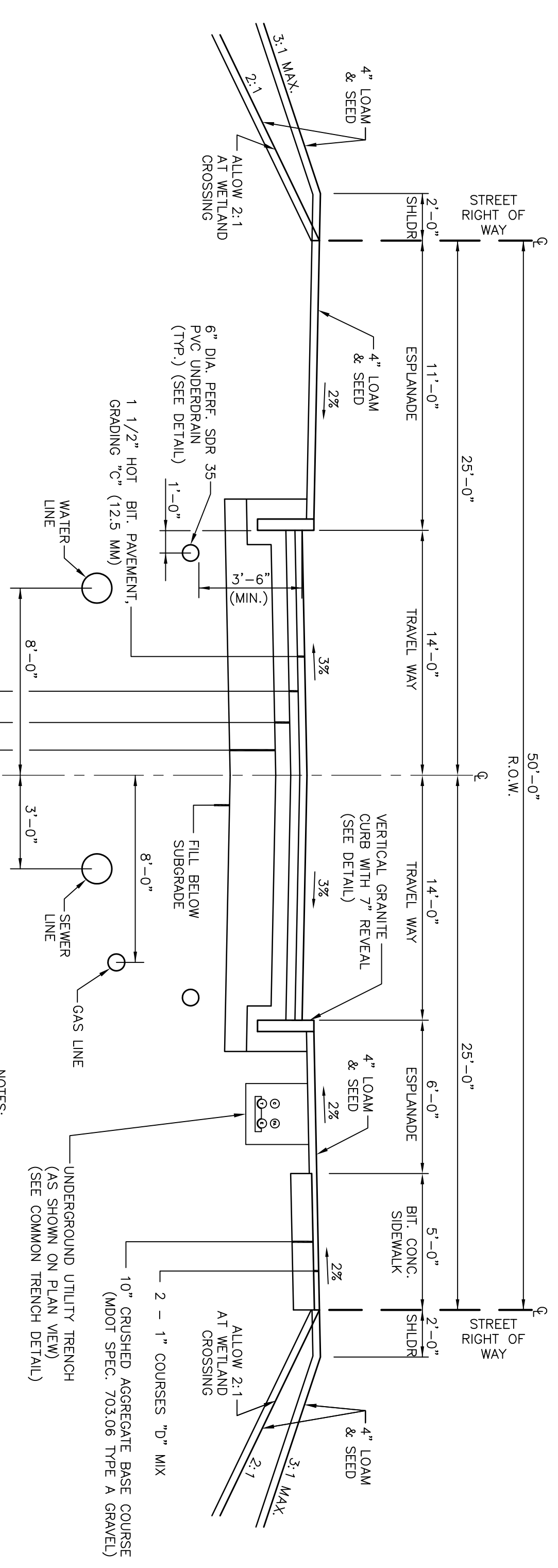
N.T.S.



TYPICAL STORMWATER TRENCH SECTION

NOT TO SCALE

THIS PLAN IS FOR REVIEW PURPOSES ONLY AND IS NOT INTENDED FOR CONSTRUCTION OR RECORDING



TYPICAL ROAD CROSS SECTION

NOT TO SCALE

NOTES:

- 1) LOAM AND SEED SHALL BE IN ACCORDANCE WITH MDOT SPECIFICATIONS 615 AND 618, METHOD #1.
- 2) AGGREGATE SUBBASE SHALL BE IN ACCORDANCE WITH MDOT SPECIFICATIONS, SECTION 403 AND SHALL NOT CONTAIN PARTICLES OF ROCK EXCEEDING 6\"/>

PROJECT NUMBER:	41041
DATE:	5/1/18
SCALE:	AS NOTED
DATE:	MAY 1, 2018

CONSTRUCTION DETAILS - SHEET 2

Prepared For: **WB GROUP, INC**
130 BANCROFT STREET, PORTLAND, MAINE 04102

Project Name and Location: **PROPOSED CAPSIC MEADOWS SUBDIVISION**
130 BANCROFT STREET, PORTLAND, MAINE 04102

NCS
SURVEYING • ENGINEERING • LAND PLANNING
Northeast Civil Solutions
INCORPORATED
381 PINE ROAD, SCARBOROUGH, MAINE 04074
207.853.1000
207.853.1001
www.northeastcivilsolutions.com