

NOTES:
 1. OWNER/APPLICANT: CHABAD LUBAVITCH OF MAINE INC. POMEROY STREET PORTLAND, MAINE
 2. ENGINEER: LESTER S. BERRY, PE#3341 BH2M
 3. SURVEYOR: ROBERT LIBBY JR., PLS#2190 BH2M
 4. WETLAND DELINEATION: MARK HAMPTON, C.S.S. #216 MARK HAMPTON & ASSOCIATES PORTLAND, MAINE
 A TIER ONE WETLAND PERMIT WAS GRANTED BY THE MAINE DEP (L22414-TB-A-N) FOR 13,028 S.F. ON AUG. 16, 2005 FOR THIS PROJECT. CURRENT PROJECT RESULTS IN FOLLOWING WETLAND IMPACTS:
 WETLAND IMPACT #1 2,466 S.F.
 WETLAND IMPACT #2 5,486 S.F.
 WETLAND IMPACT #3 1,978 S.F.
 WETLAND IMPACT #4 50 S.F.
 TOTAL IMPACTS 9,980 S.F.

5. TAX MAP REFERENCE: MAP 193, BLOCK E, LOT 1
 6. DEED REFERENCES: BK. 21417, PG. 198
 7. ZONING: R-3
 8. PROPOSED USE: SINGLE FAMILY RESIDENCE
 9. MINIMUM STANDARDS: MINIMUM LOT AREA = 6500 S.F.
 MINIMUM FRONTAGE = 50'
 MINIMUM SETBACKS: FRONT & REAR = 25'
 SIDE (SIDE ST.) = 20'

10. PROJECT AREAS:
 ORIGINAL LOT=87,924 S.F. (2.02 AC.)
 OUTSALE LOT=14,103 S.F. (0.32 AC.)
 CHABAD LOT=73,821 S.F. (1.70 AC.)
 11. PLAN REFERENCE:
 A. INFORMATION PROVIDED BY APPLICANT AND FROM PLAN OF PROPERTY MADE FOR STUART B. HERRICK JR., BANCROFT STREET, PORTLAND, MAINE JULY 31, 1986, R.P. TITCOMB ASSOC. INC.
 B. "SITE PLANS FOR CHABAD LUBAVITCH OF MAINE INC., POMEROY STREET, PORTLAND", BY BH2M DATED MARCH 2004 WITH REVISIONS THROUGH JULY 2, 2007.

12. SOLID WASTE: CURBSIDE BY CITY OF PORTLAND
 13. PARKING: PRIVATE RESIDENCE = 2 SPACES
 14. IF LEDGE IS ENCOUNTERED DURING CONSTRUCTION A PRE-BLAST INVENTORY SHALL BE CONDUCTED AND SUBMITTED TO THE ENGINEERING DEPARTMENT.
 15. ALL CONSTRUCTION AND SITE ALTERATIONS SHALL BE DONE IN ACCORDANCE WITH THE MAINE EROSION AND SEDIMENTATION CONTROL BMP'S, LATEST REVISION.

16. WAIVERS:
 A. A WAIVER IS REQUESTED TO ELIMINATE ALL OF THE SIDEWALK ALONG POMEROY STREET.
 B. A WAIVER IS REQUESTED TO ELIMINATE CURBING ALONG THE ENTIRE LENGTH OF POMEROY STREET.
 17. ALL PERMITS FOR BLASTING MUST BE COORDINATED WITH BOTH THE FIRE AND ENGINEERING DEPARTMENTS.

18. PRIOR TO CONSTRUCTION, A PRE-CONSTRUCTION MEETING SHALL BE HELD AT THE PROJECT SITE WITH THE CONTRACTOR, DEVELOPMENT REVIEW COORDINATOR, PUBLIC WORKS REPRESENTATIVE AND OWNER TO REVIEW THE CONSTRUCTION SCHEDULE AND CRITICAL ASPECTS OF THE SITE WORK. AT THAT TIME, THE SITE/BUILDING CONTRACTOR SHALL PROVIDE THREE (3) COPIES OF A DETAILED CONSTRUCTION SCHEDULE TO THE ATTENDING CITY REPRESENTATIVES. IT SHALL BE THE CONTRACTOR'S RESPONSIBILITY TO ARRANGE A MUTUALLY AGREEABLE TIME FOR THE PRE-CONSTRUCTION MEETING.
 19. IF WORK WILL OCCUR WITHIN THE PUBLIC RIGHT-OF-WAY SUCH AS UTILITIES, CURB, SIDEWALK AND DRIVEWAY CONSTRUCTION, A STREET OPENING PERMIT(S) IS REQUIRED FOR SITE WORK. PLEASE CONTACT CAROL MERRITT AT 874-8300, EXT. 8828. (ONLY EXCAVATORS LICENSED BY CITY OF PORTLAND ARE ELIGIBLE.)
 20. ALL REQUIRED DIG SAFE REQUIREMENTS MUST BE FOLLOWED PRIOR TO THE CONSTRUCTION BEGINNING.

21. THE PROPOSED CITY OWNED STREET LIGHT (WITHIN THE POMEROY STREET ROW) WILL BE PROVIDED BY THE APPLICANT AND WILL MEET ALL APPLICABLE CITY OF PORTLAND STANDARDS. CONTRACTOR SHALL CONSULT WITH KEVIN THOMAS, CITY REPRESENTATIVE PRIOR TO INSTALLATION OF STREET LIGHT.
 22. BENCHMARK: SURVEY CONTROL POINT #9 PK NAIL SET IN PAVEMENT ON BANCROFT STREET, ELEVATION=58.89' CITY OF PORTLAND DATUM

I CERTIFY THAT THIS SURVEY CONFORMS TO THE MAINE BOARD OF LICENSES FOR PROFESSIONAL LAND SURVEYORS TECHNICAL STANDARDS OF PRACTICE FOR A STANDARD BOUNDARY SURVEY WITH THE FOLLOWING EXCEPTIONS:
 1. NO SURVEYORS REPORT

ROBERT C. LIBBY JR. PLS #2190

NO.	DATE	DESCRIPTION
1	1/24/12	Submitted Amended Site Plan
2	3/12/12	Submitted Level I & II Site Plans
3	8/29/12	Revisions for Level I & II Applications Per City Comments
4	11/22/12	Revisions for Level I & II Applications Per City Comments
5	4/15/13	Revisions for Level I & II Applications Per City Comments
6	5/24/13	Revisions for Level I & II Applications Per City Comments



BH2M
 Berry, Huff, MacDonald, Milligan Inc.
 Engineers, Surveyors
 28 Stone Street
 Portland, Maine 04108
 Tel. (207) 859-2771
 Fax (207) 859-8550

FOR
 Chabad Lubavitch
 Bancroft Street
 Portland, Maine

SITE PLAN
 LEVEL I-MINOR RESIDENTIAL DEV.
 LEVEL II-ROAD IMPROVEMENTS
 LAND OF
 CHABAD LUBAVITCH OF MAINE INC.
 POMEROY STREET
 PORTLAND, MAINE

DESIGNED W. Polkey	DATE Jan. 2012
DRAWN Dept.	SCALE As Noted
CHECKED W. Thompson	JOB. NO. 11093

SHEET
1

REPRODUCTION OR REUSE OF THIS DOCUMENT WITHOUT THE EXPRESSED WRITTEN CONSENT OF BH2M INC. IS PROHIBITED

MAINE STATE COORDINATES
 NAD 83 WEST ZONE

SYMBOL	NORTHING	EASTING
Ⓐ	302840.4940	2916858.2911
Ⓑ	302637.9662	2917060.2727
Ⓒ	302962.6936	2917190.8566
Ⓓ	302908.5890	2917258.3109
Ⓔ	302972.2611	2917339.2307
Ⓕ	303094.4798	2917099.1047

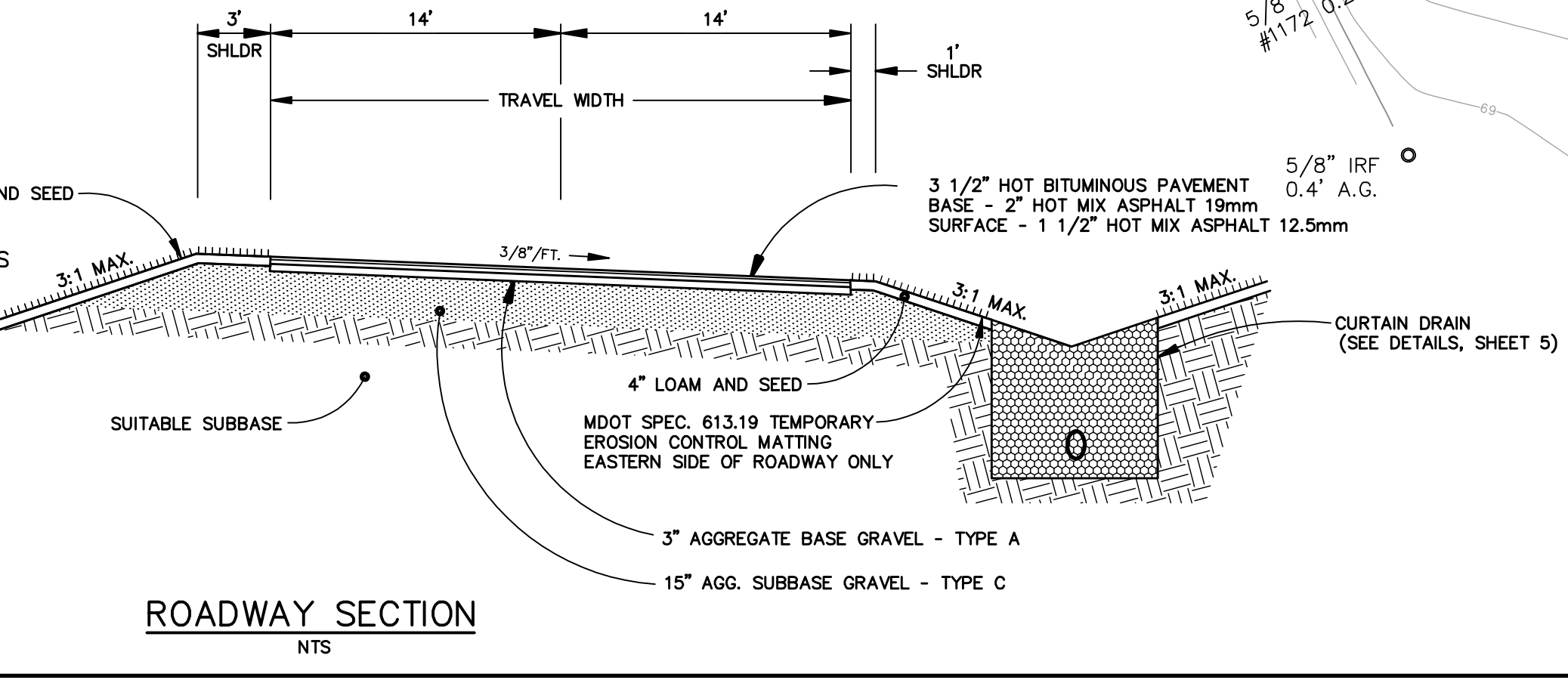
- AT LEAST 30% OF ALL TREES OVER 10" DBH WITHIN SETBACK SHALL BE PRESERVED BY THE CONTRACTOR ACCORDING TO SECTION 14.526(b)2.9 OF THE CITY OF PORTLAND ORDINANCE.
- AREA OF DISTURBANCE: 28,992 S.F.
- ALL EXISTING LANDSCAPING OUTSIDE THE LIMITS OF WORK ARE TO BE PRESERVED BY THE CONTRACTOR.
- ALL WORK WITHIN POMEROY STREET SHALL MEET THE CITY OF PORTLAND TECHNICAL MANUAL STANDARDS.
- ALL STORMDRAIN PIPE SHALL CONSIST OF ADS N-12 TRIPLE-WALL PIPE MEETING A MINIMUM PS-48 RATING. ALL SEWERMAIN PIPE SHALL CONSIST OF PVC RING TYPE SEWER (SDR 35 OR EQUIVALENT) MEETING A MINIMUM PS-48 RATING.
- STREET STATUS: BANCROFT STREET-ACCEPTED MOTLEY STREET-ACCEPTED POMEROY STREET-UNACCEPTED KENILWORTH STREET-VACATED
- COORDINATE POINTS SHOWN AT THE CORNERS OF PROPERTY ARE BASED UPON MAINE STATE COORDINATE SYSTEM-WEST ZONE (NAD 83) USING CITY OF PORTLAND POINTS L751-72-118 AND L751-75-125.
- BEARINGS AND NORTH ORIENTATION SHOWN ARE MAGNETIC NORTH 1986 AND ARE BASED UPON PLAN REFERENCE #11A.
- CONTRACTOR SHALL INSTALL A STABILIZED CONSTRUCTION ENTRANCE AT THE INTERSECTION OF POMEROY STREET AND BANCROFT STREET AS SHOWN ON DETAILS (SHEET 5).

STREET TREES LEGEND

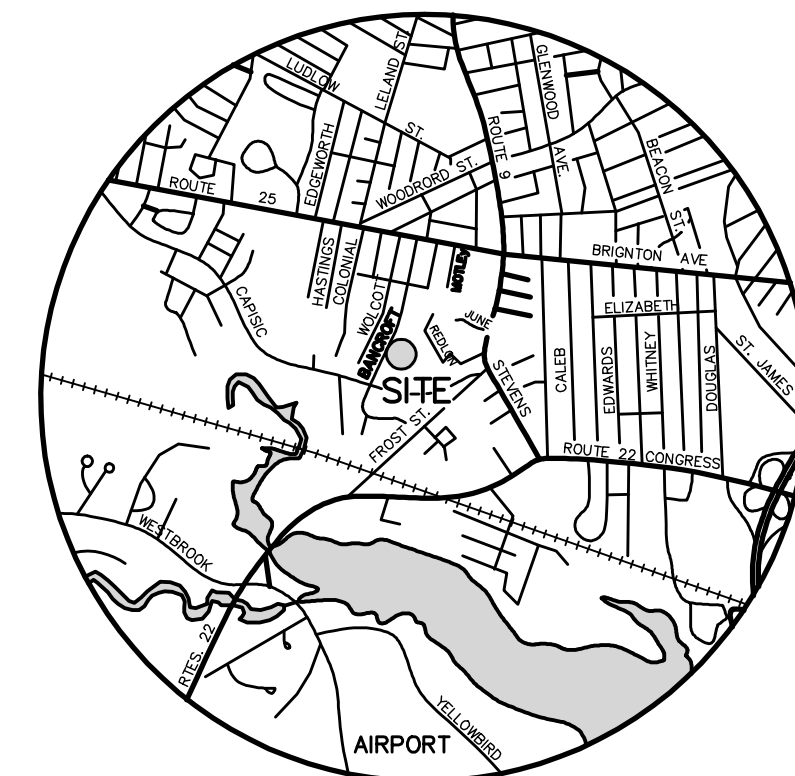
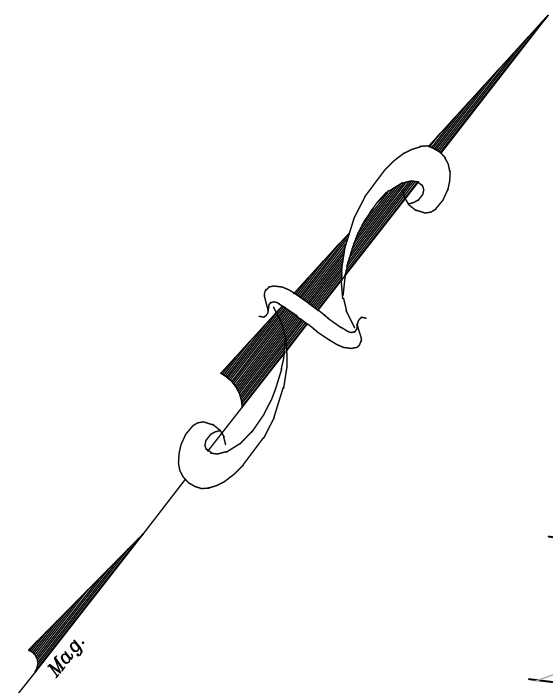
SYMBOL	QUANTITY	BOTANICAL NAME	COMMON NAME	SIZE
⊙	8	CORYLUS COLUMNNA	TURKISH FILBERT	2 1/2" CAL.

LEGEND

SYMBOL	DESCRIPTION
⊙	PROPOSED PUBLICLY OWNED STREET LIGHTS
---	PROPOSED STORM DRAIN
---	PROPOSED UNDERGROUND ELECTRIC
---	PROPOSED UNDERDRAIN
---	PROPOSED SETBACK
---	PROPOSED SANITARY SEWER
---	PROPOSED WATERMAIN
---	EXISTING CONTOUR
---	EASEMENT LINE
---	LIMIT OF WETLANDS
---	TREE LINE
⊙	UTILITY POLE
---	SANITARY SEWER
---	WATER LINE
---	DRAIN MANHOLE
---	SANITARY SEWER MANHOLE



C:\land\Projects\2005\W007\Main\SitePlan.dwg 9/27/2011 10:34 AM



LOCATION MAP
SCALE: 1" = .5 MILES

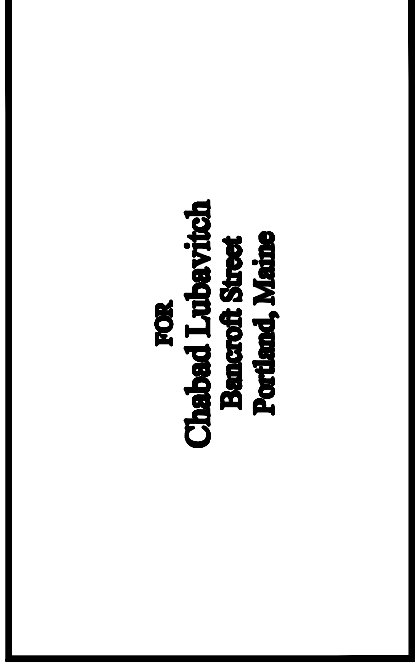
NO.	DATE	REVISION DESCRIPTION
1	1/24/12	Submitted Amended Site Plan
2	3/12/12	Submitted Level I & II Site Plans
3	8/29/12	Revisions for Level I & II Applications
4	11/27/12	Revisions for Level I & II Applications Per City Comments
5	4/15/13	Revisions for Level I & II Applications Per City Comments
6	5/24/13	Revisions for Level I & II Applications Per City Comments



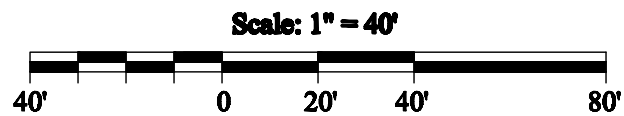
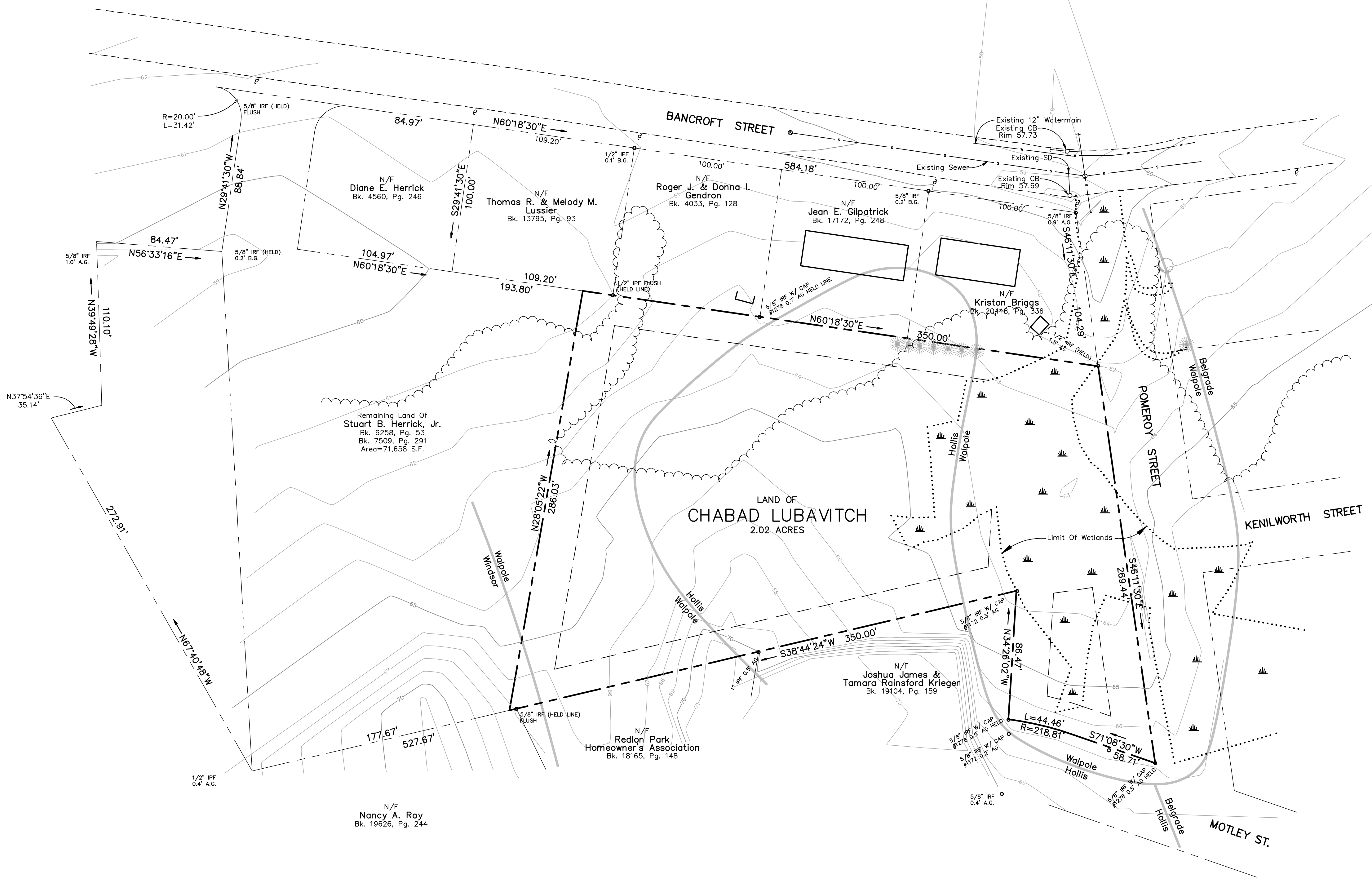
BH2M
 Berry, Huff, McDonald, Milligan Inc.
 Engineers, Surveyors
 28 State Street
 Portland, Maine 04108
 Tel: (207) 859-2771
 Fax: (207) 859-8550

NOTES:

- OWNER/APPLICANT: CHABAD LUBAVITCH OF MAINE INC. POMEROY STREET PORTLAND, MAINE
- SURVEYOR: ROBERT LIBBY JR., PLS#2190 BH2M INC.
- WETLAND MAPPING: MARK HAMPTON ASSOCIATES PORTLAND, MAINE
- TAX MAP REFERENCE: MAP 193, BLOCK E, LOT 1
- DEED REFERENCES: BK. 21417, PG. 198
- ZONING: R-3
- PLAN REFERENCE: INFORMATION FOR THIS PLAN WAS PROVIDED BY APPLICANT AND FROM PLAN OF PROPERTY MADE FOR STUART B. HERRICK JR., BANCROFT STREET, PORTLAND, MAINE, JULY 31 1986, R.P. TITCOMB ASSOCIATES INC.
- SOIL MAPPING FROM CUMBERLAND COUNTY MEDIUM INTENSITY SOIL MAP.
- BENCHMARK: SURVEY CONTROL POINT #9 PK NAIL SET IN PAVEMENT ON BANCROFT STREET, ELEVATION=58.89' CITY OF PORTLAND DATUM



STANDARD BOUNDARY SURVEY AND EXISTING CONDITIONS PLAN
 LAND OF CHABAD LUBAVITCH OF MAINE INC.
 POMEROY STREET
 PORTLAND, MAINE



I CERTIFY THAT THIS SURVEY CONFORMS TO THE MAINE BOARD OF REGISTRATION FOR LAND SURVEYORS STANDARD BOUNDARY SURVEY CATEGORY I, CONDITION I, WITH THE FOLLOWING EXCEPTIONS:

- NO SURVEYOR'S REPORT



ROBERT C. LIBBY JR. PLS #2190

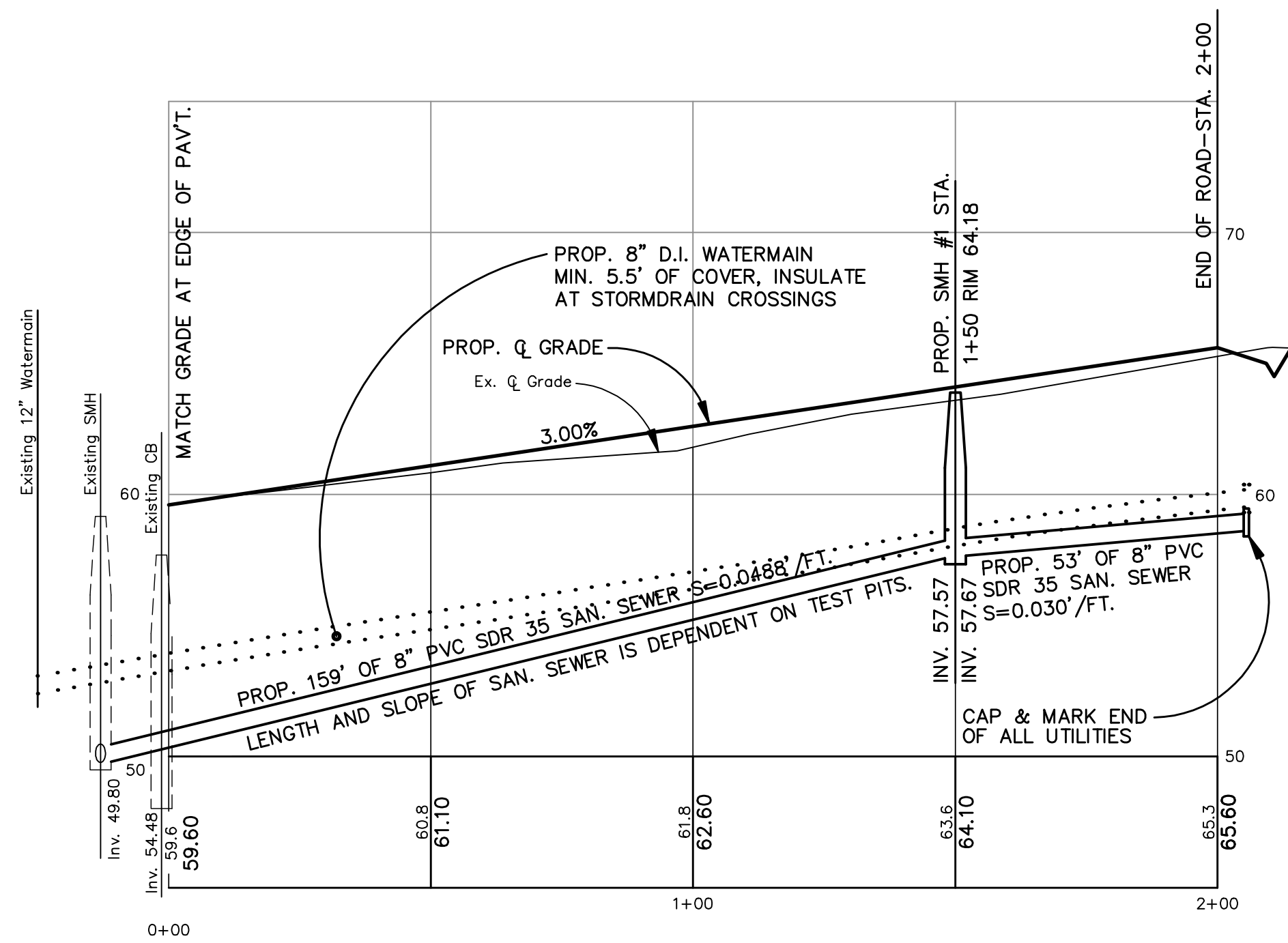
LEGEND

SYMBOL	DESCRIPTION
○ IRF	IRON ROD FOUND
○ IPF	IRON PIPE FOUND
□ GMF	GRANITE MONUMENT FOUND
● IRS	5/8" IRON ROD W/ CAP TO BE SET
□ GMS	GRANITE MONUMENT SET
- - - - -	LIMIT OF WETLANDS
- - - - -	EXISTING CONTOUR
- - - - -	SOIL BOUNDARY
N/F	NOW OR FORMERLY

DESIGNED Survey	DATE Jan. 2012
DRAWN Dept.	SCALE As Noted
CHECKED R. Libby Jr.	JOB. NO. 11093

SHEET
2

REPRODUCTION OR REUSE OF THIS DOCUMENT WITHOUT THE EXPRESSED WRITTEN CONSENT OF BH2M INC. IS PROHIBITED

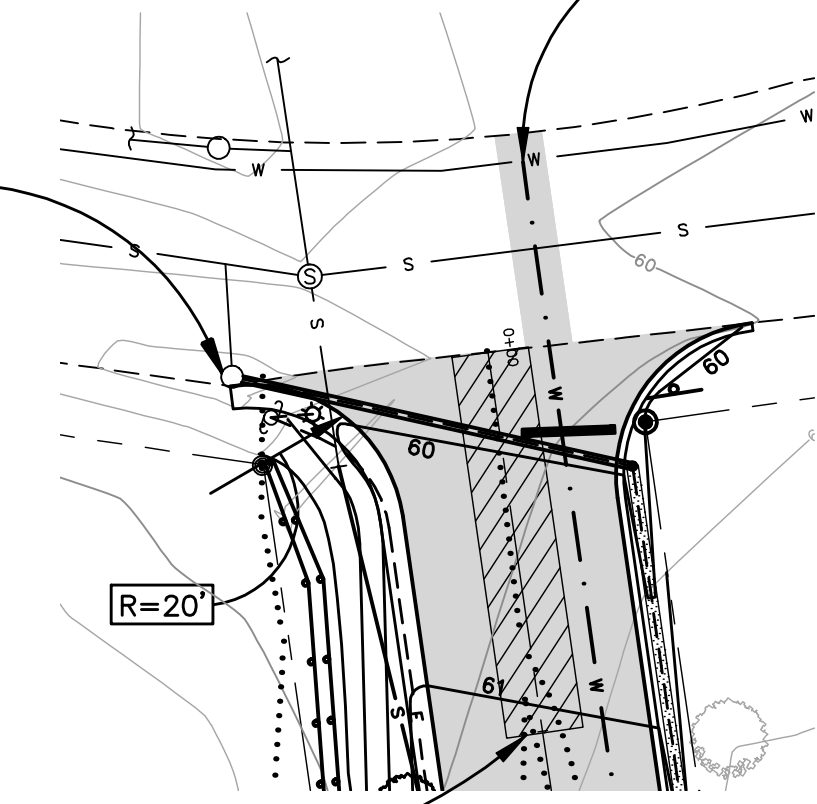


**POMEROY STREET
PROFILE**

SCALE
VERTICAL: 1" = 5'
HORIZONTAL: 1" = 25'

SAWCUT EX. PAVT AT TRENCH
LOCATION AND PAVT JOINT
SEE DETAIL

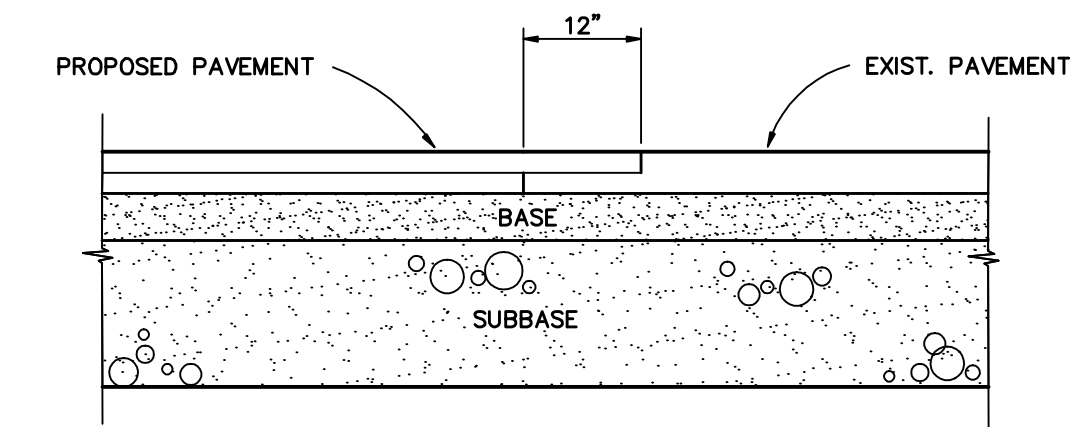
CORE HOLES AT UTILITY
ENTRANCES AND INSTALL
RUBBER BOOT PER CITY
TECHNICAL MANUAL, SEE
DETAILS



20' STABILIZED CONSTRUCTION
ENTRANCE, SEE DETAIL SHT 5

ENTRANCE PLAN

SCALE: 1" = 25'



SAWCUT EXIST. PAVEMENT ALONG A SMOOTH LINE TO
A NEAT EVEN VERTICAL JOINT, APPLY TACK
PRIOR TO PROPOSED PAVING (AS REQ'D)

PAVEMENT JOINT DETAIL

N.T.S.

NO.	DATE	REVISION DESCRIPTION
1	1/24/12	Submitted Amended Site Plan
2	3/12/12	Submitted Level I & II Site Plans
3	8/29/12	Revisions for Level I & II Applications
4	11/27/12	Revisions for Level I & II Applications Per City Comments
5	4/15/13	Revisions for Level I & II Applications Per City Comments
6	5/24/13	Revisions for Level I & II Applications Per City Comments



BH2M
Berry, Huff, MacDonald, Milligan Inc.
Engineers, Surveyors
28 State Street
Columbia, Maine 04008
Tel. (207) 859-2771
Fax (207) 859-6550

FOR
Chabed Libavitch Of Maine Inc.
Pomeroy Street
Portland, Maine

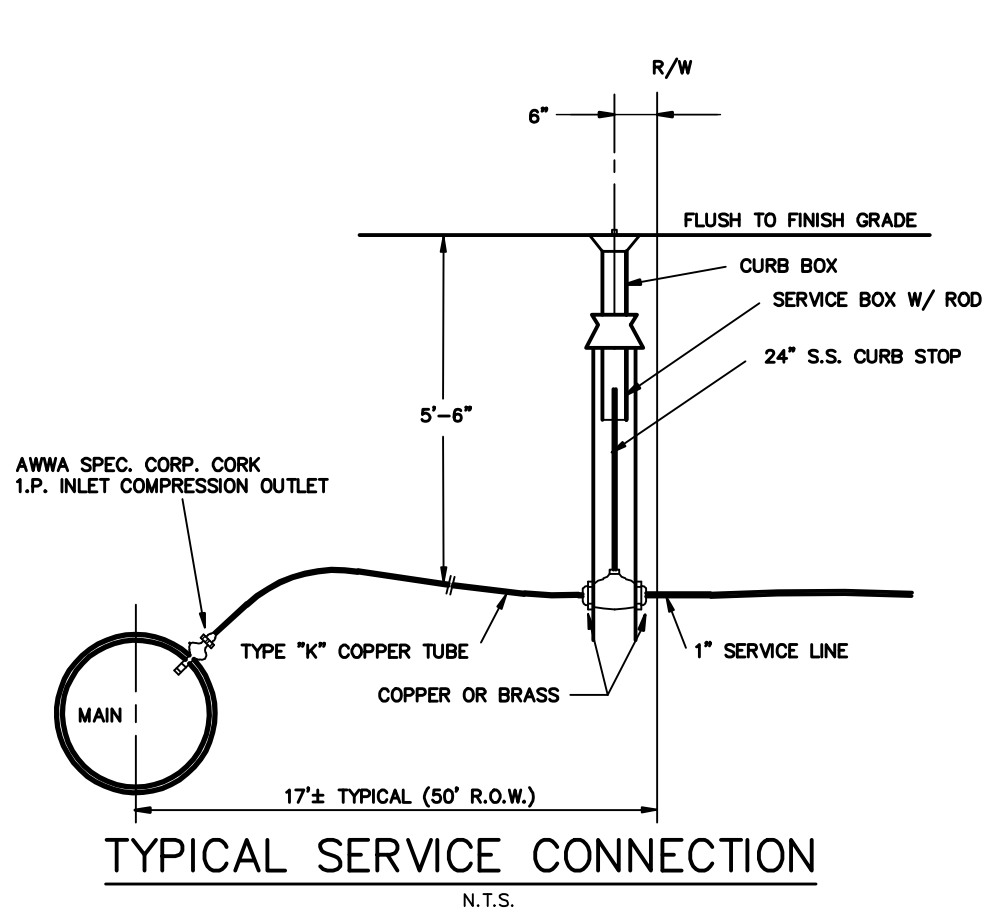
**MINOR STREET
CONSTRUCTION**

POMEROY STREET
PORTLAND, MAINE

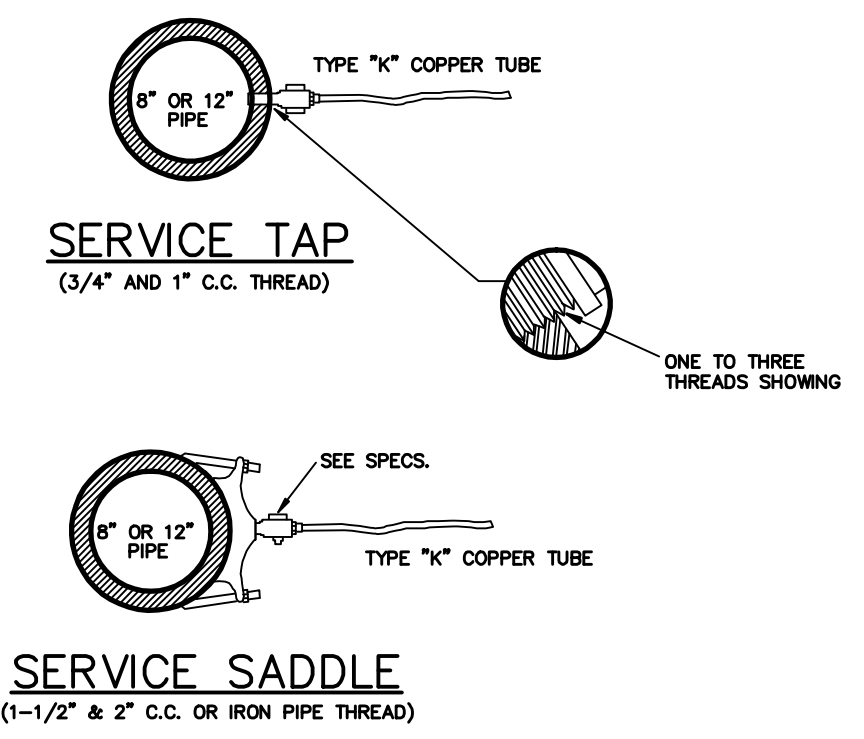
DESIGNED W. Thompson	DATE Jan. 2012
DRAWN Dept.	SCALE As Noted
CHECKED W. Thompson	JOB. NO. 11093

SHEET
3

REPRODUCTION OR REUSE OF THIS
DOCUMENT WITHOUT THE
EXPRESSED WRITTEN CONSENT
OF BH2M INC. IS PROHIBITED

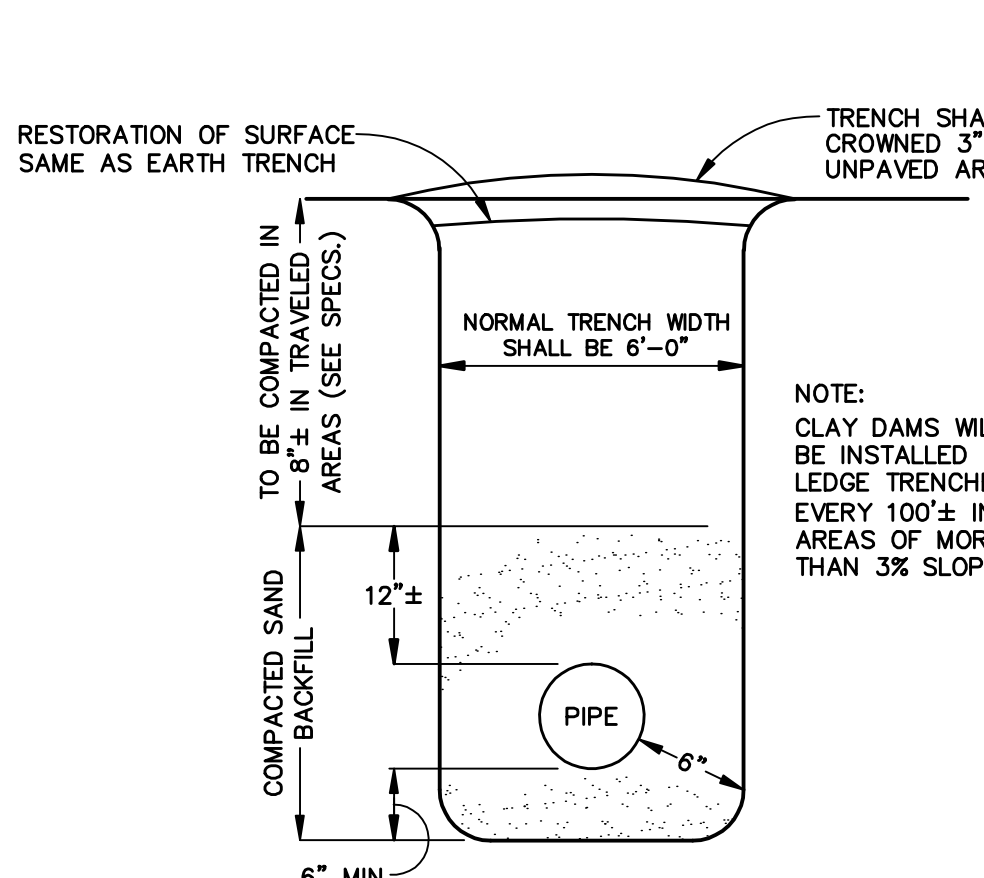


TYPICAL SERVICE CONNECTION
N.T.S.

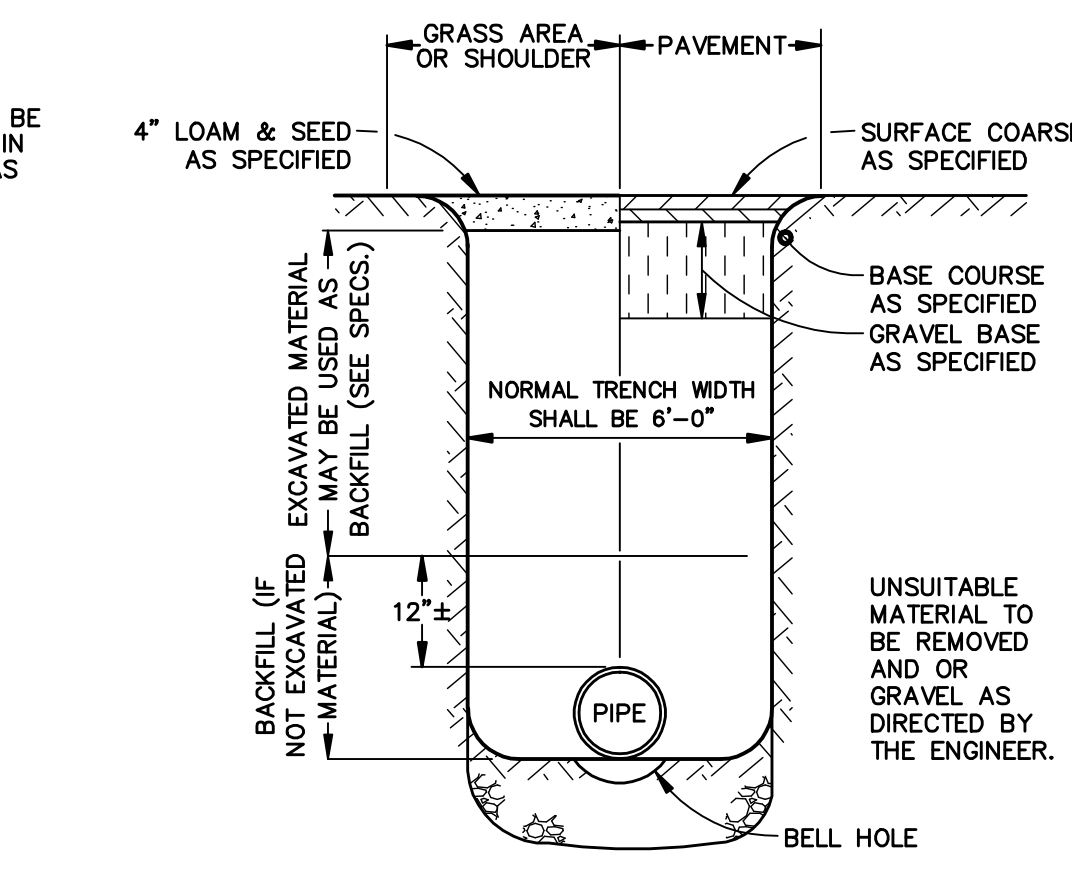


SERVICE SADDLE
(1-1/2" & 2" C.C. OR IRON PIPE THREAD)

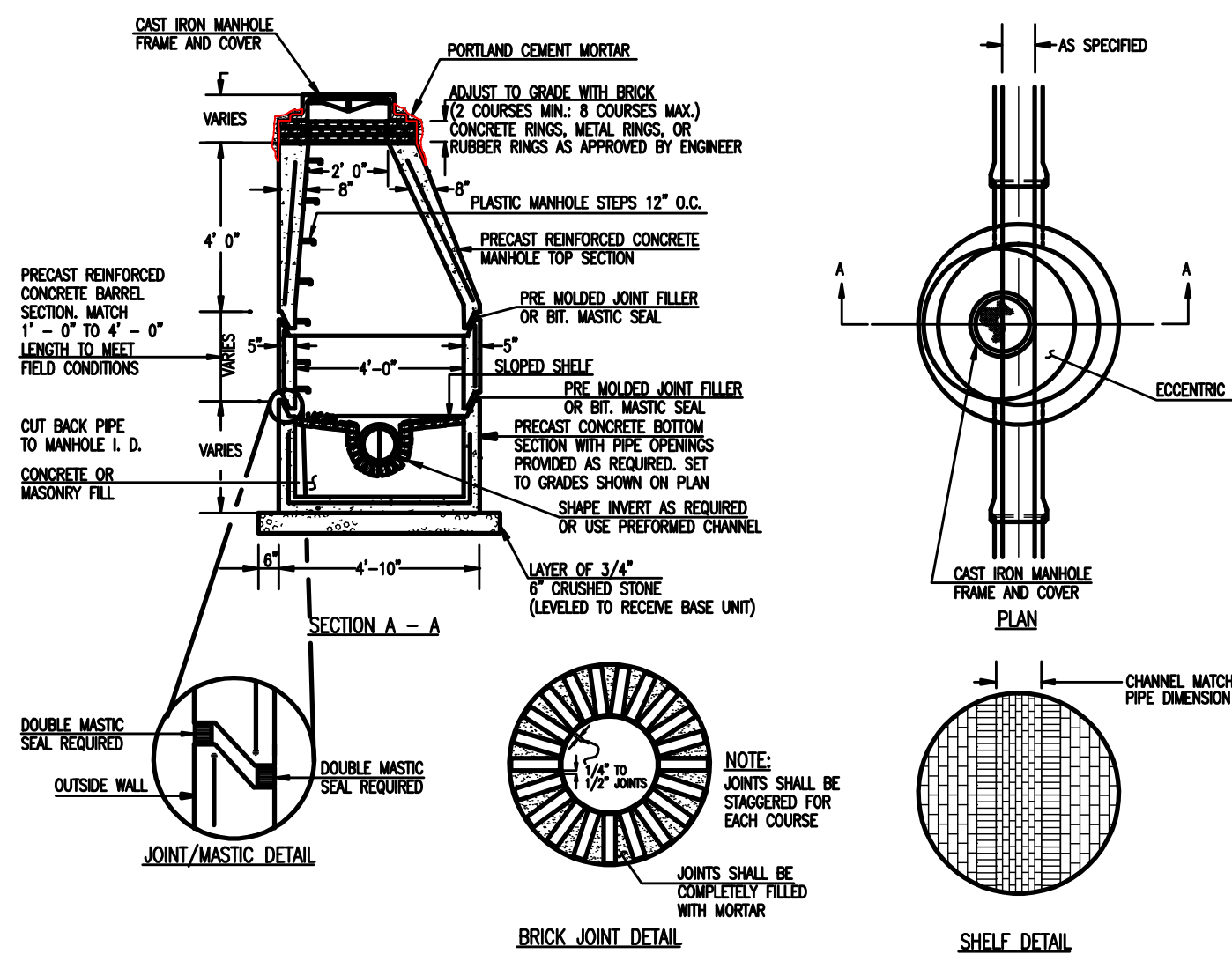
NOTE: SERVICE CONNECTIONS (DIRECT TAPS AND SERVICE CLAMPS) WILL BE INSTALLED SO THAT THE OUTLET IS AT AN ANGLE OF NOT MORE THAN 45° ABOVE THE HORIZONTAL. ALWAYS PUT A BEND OR "GOOSENECK" IN THE SERVICE LINE PRIOR TO CONNECTING TO PROVIDE FLEXIBILITY AND "SNUG" TO COUNTERACT THE EFFECTS OF A LOAD DUE TO SETTLEMENT OR EXPANSION AND/OR CONTRACTION (SEE DETAILS).



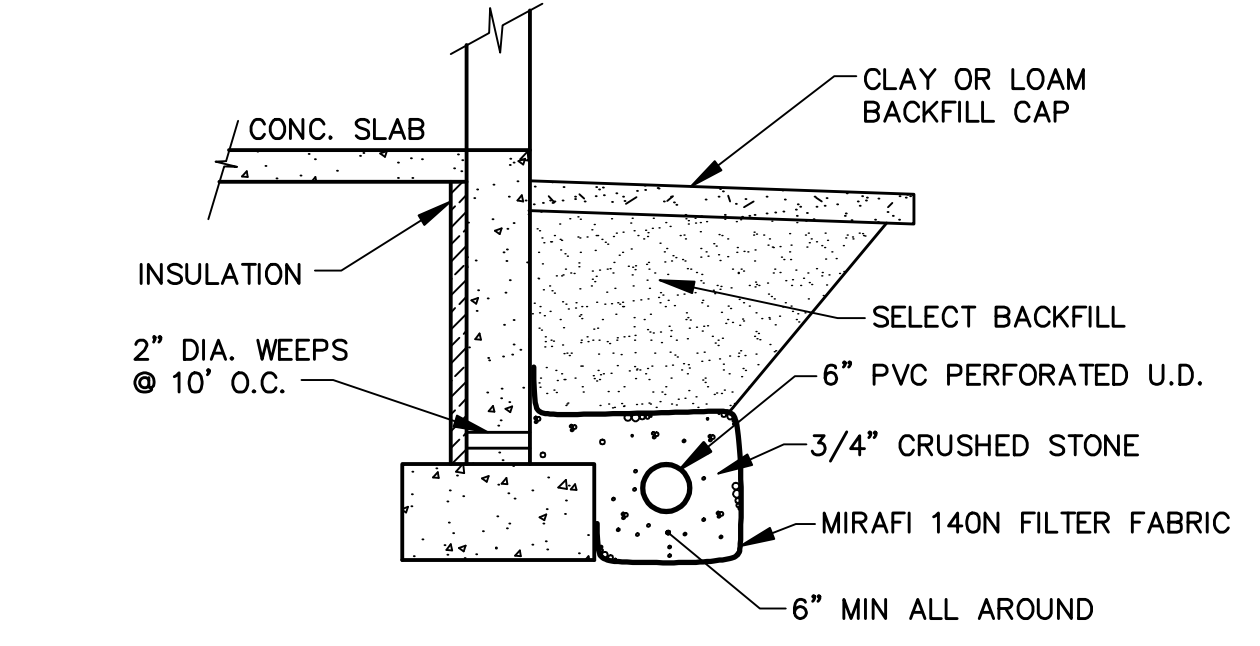
WATER THROUGH LEDGE TRENCH
N.T.S.



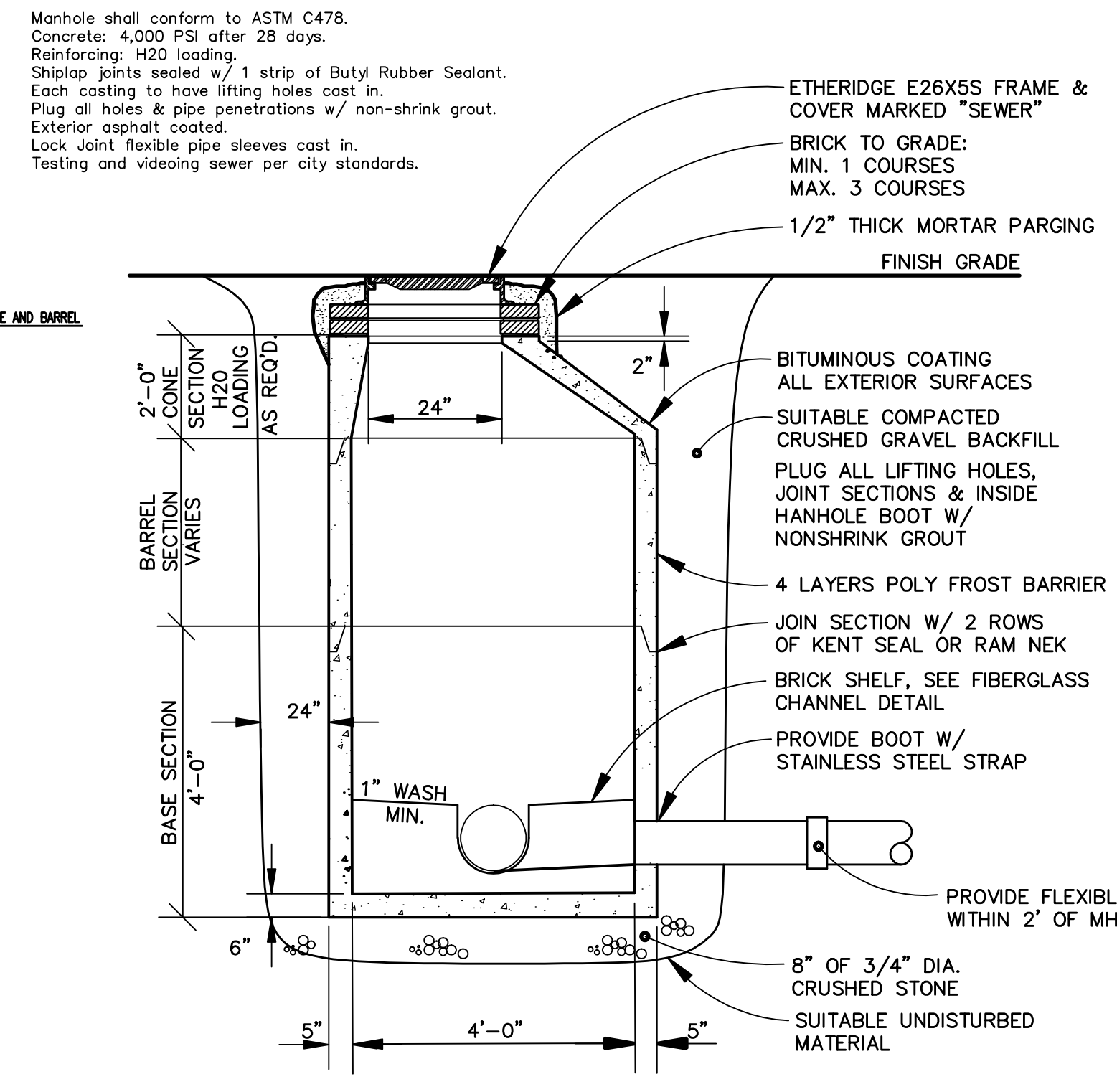
WATER THROUGH EARTH TRENCH
N.T.S.



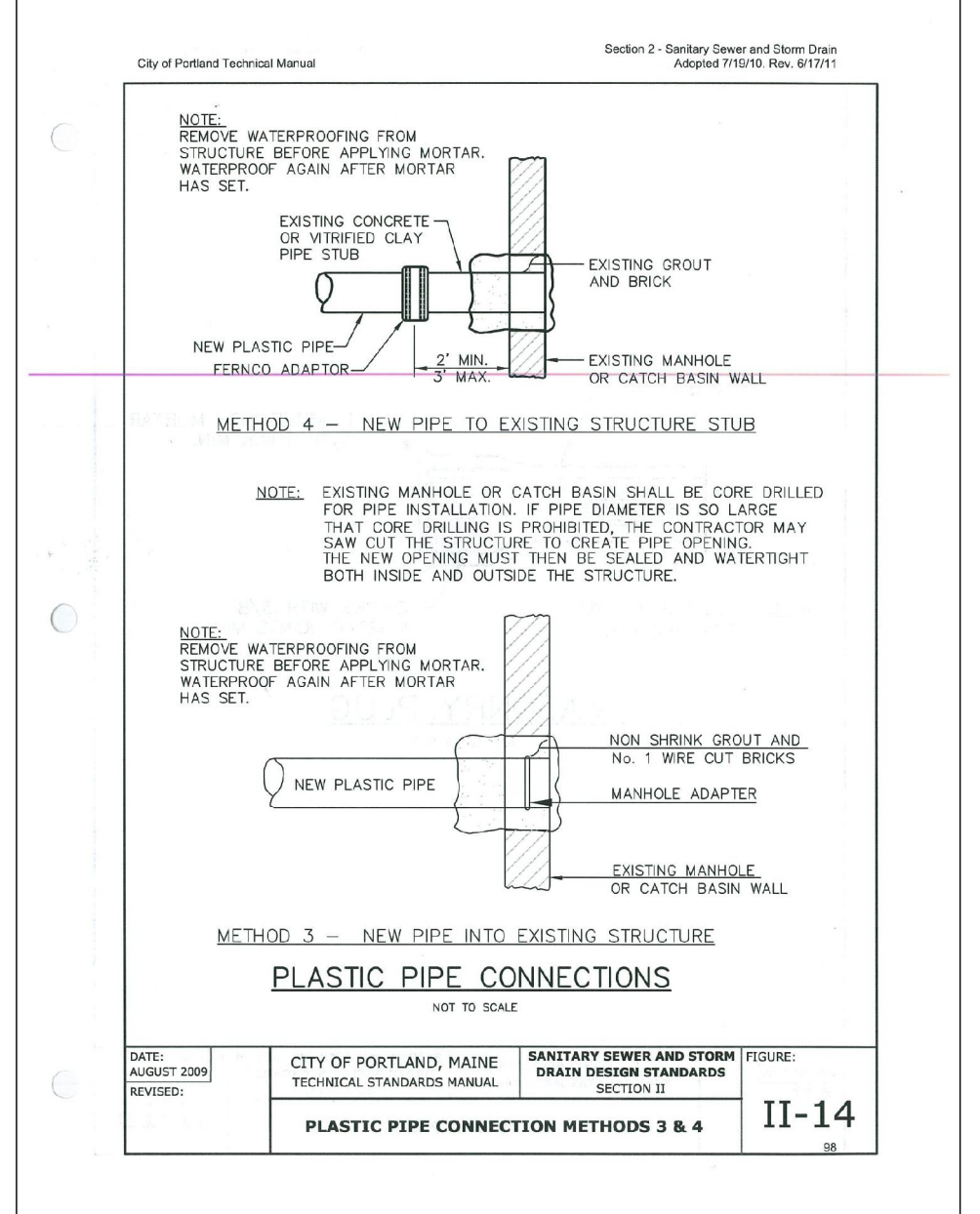
PRECAST CONCRETE MANHOLE TYPE "A"
NOT TO SCALE



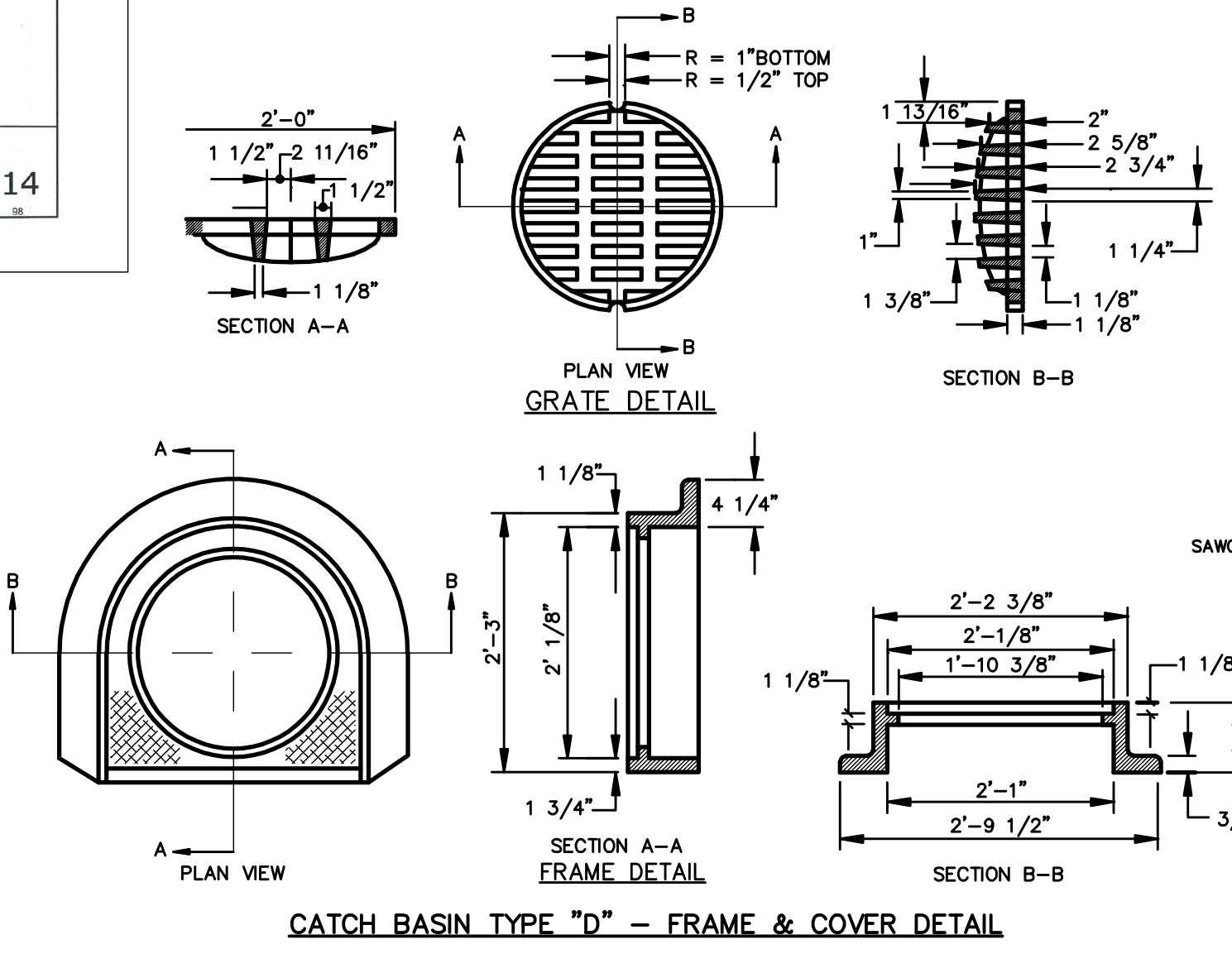
FOUNDATION DRAIN DETAIL
N.T.S.



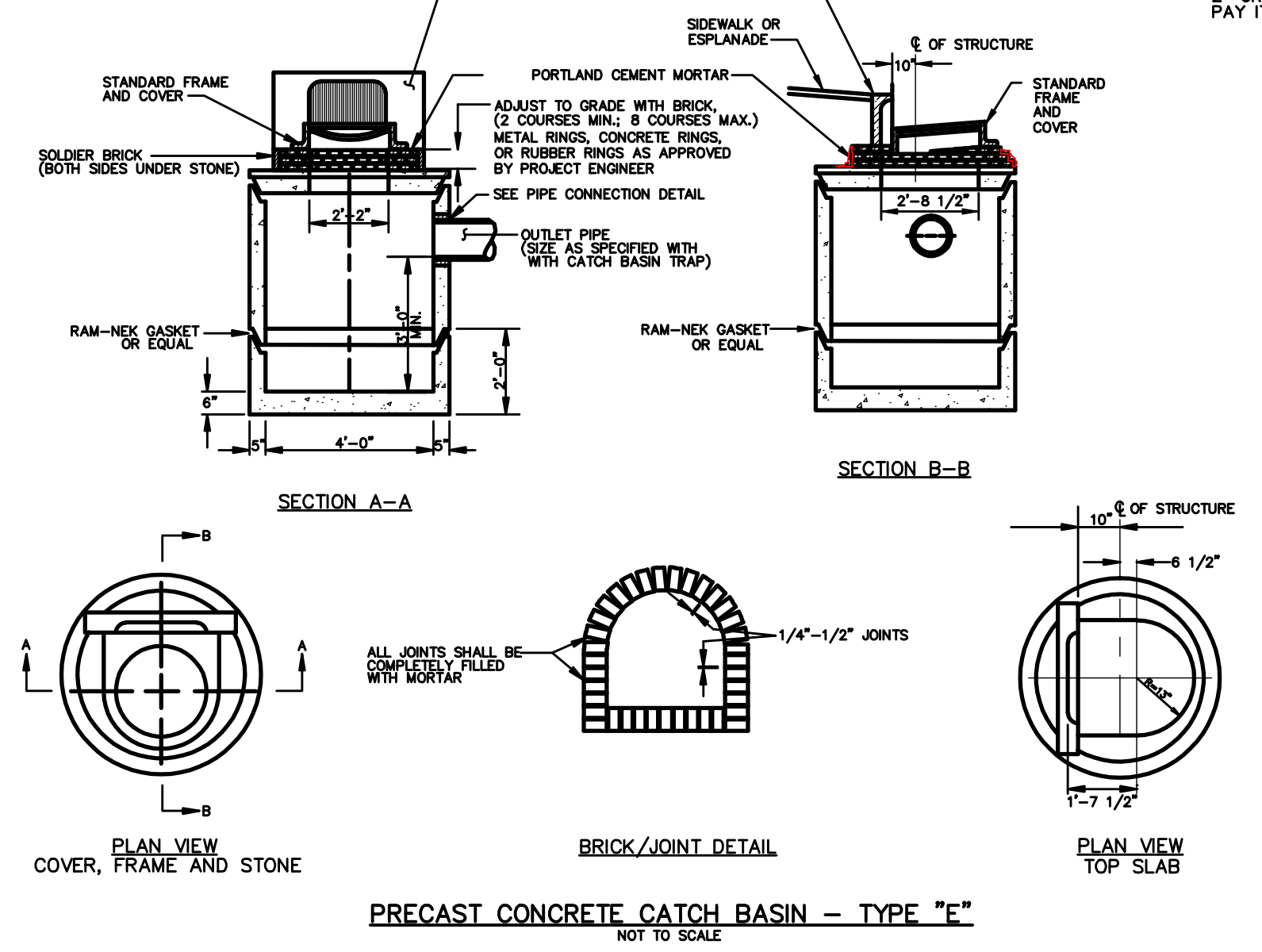
PRECAST CONCRETE SANITARY SEWER MANHOLE
N.T.S.



PIPE CONNECTION DETAILS
N.T.S.



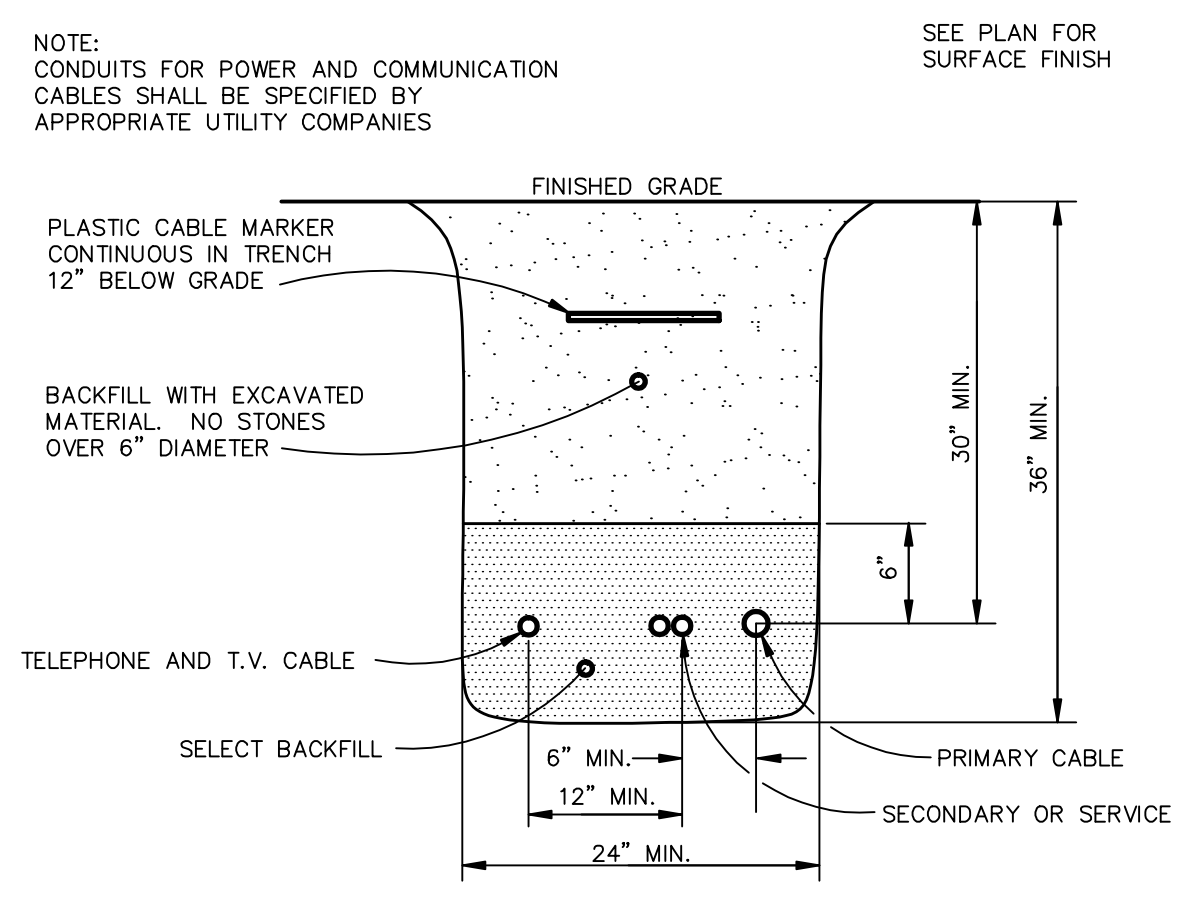
CATCH BASIN TYPE "D" - FRAME & COVER DETAIL



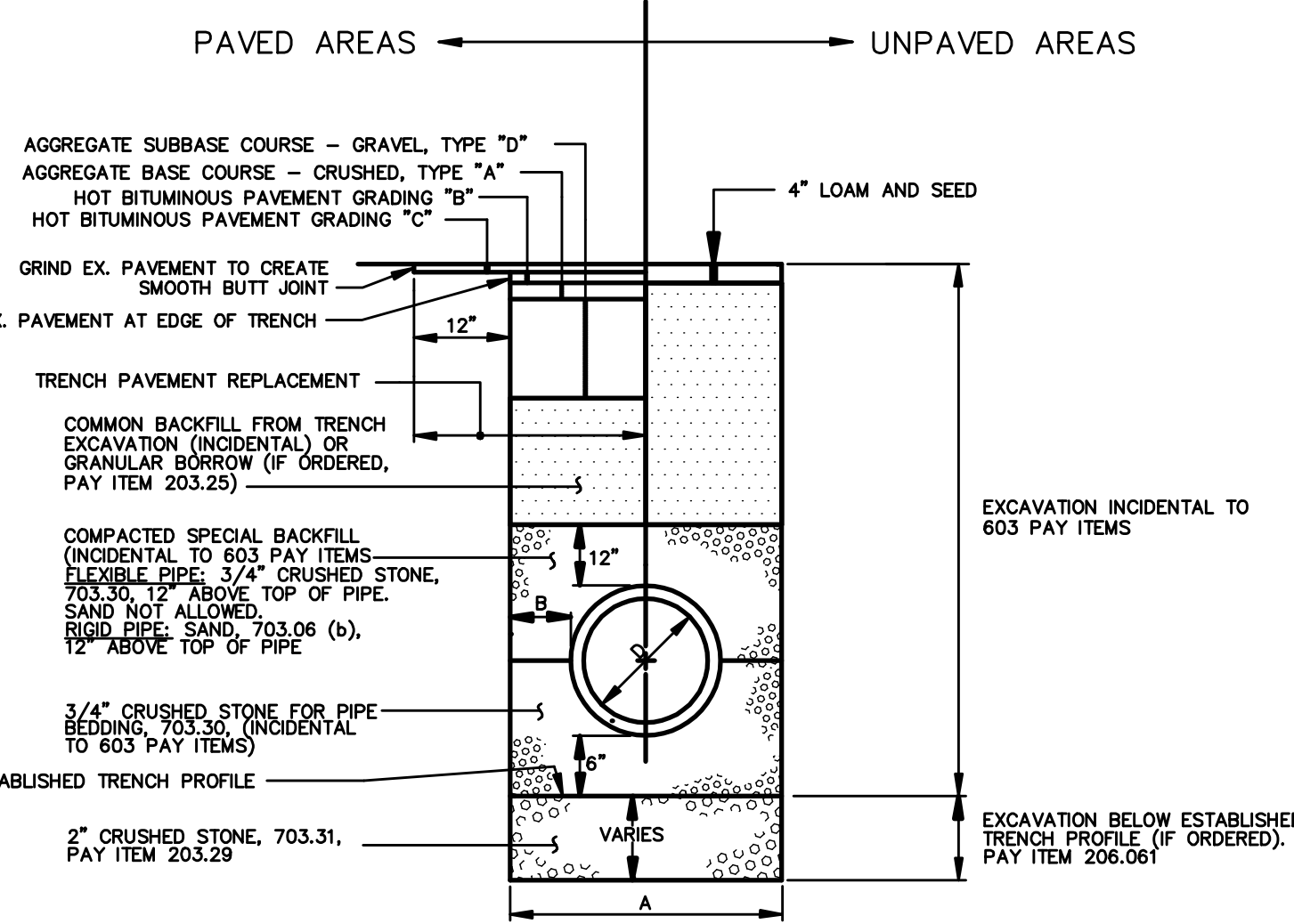
PRECAST CONCRETE CATCH BASIN - TYPE "E"
NOT TO SCALE

- GENERAL NOTES FOR MANHOLES AND CATCH BASINS
1. ALL CONCRETE SHALL BE CLASS "A" AND HAVE A MINIMUM ULTIMATE COMPRESSIVE STRENGTH OF 4000 LBS. PER SQ. INCH AT THE END OF 28 DAYS, UNLESS OTHERWISE NOTED.
 2. PRECAST REINFORCED CONE BARREL MANUFACTURED PER ASTM SPEC. C-478-67
 3. SEWER BRICK SHALL CONFORM TO ASTM SPEC. DESIGNATE ON C-32-63, GRADE MA AND SA.
 4. ALL MANHOLES SHALL HAVE A BITUMINOUS WATERPROOFING APPLIED TO THE EXTERIOR SURFACE. IF CONSTRUCTED OF BRICK MASONRY, SURFACE SHALL BE PLASTERED WITH A SMOOTH MORTAR FINISH 3/8" THICK. AFTER THE MORTAR HAS SET, THE SURFACE SHALL BE WATERPROOFED AS REQUIRED BY SUPPLEMENTAL SPECIFICATIONS SECTION 604.
 5. CASTINGS SHALL CONFORM TO ASTM DESIGNATION A48-CLASS 35. ALL PARTS OF CASTINGS, EXCEPT FINISHED SURFACE, SHALL RECEIVE A COAT OF COAL TAR PITCH VARNISH OR ASPHALTUM PAINT WHICH SHALL BE SMOOTH AND TOUGH BUT NOT BRITTLE.
 6. MANHOLES MAY BE CONSTRUCTED OF MASONRY, PRECAST REINFORCED CONCRETE, OR CAST IN PLACE.

7. ALL PRECAST MANHOLES AND CATCH BASINS SHALL BE IDENTIFIED BY STATION AND OFFSET, PAINTED ON THE SIDE OF THE STRUCTURE BY THE MANUFACTURER.
8. STORM AND SEWER MANHOLES SHALL HAVE SOLID COVERS WITH ONE DRILLED PICK HOLE.
9. EXISTING MANHOLES, CATCH BASINS, FRAMES, AND COVERS SHALL BE SALVAGED BY THE CONTRACTOR, AND SHALL REMAIN THE PROPERTY OF THE CITY OF PORTLAND.
10. WHEN THE FLOW CHANGES DIRECTION IN A MANHOLE, THE CHANNEL ALIGNMENT SHALL FOLLOW A SMOOTH RADIUS. CHANNELS SHALL BE FORMED TO ACCEPT ALL INLET PIPES.
11. THE MANHOLE SHELF AND CHANNEL SHALL BE LINED WITH BRICK SET IN CEMENT MORTAR ON ALL SANITARY SEWER MANHOLES. BRICKS SHALL BE LAID FLAT ON THE SHELF AND ON EDGE IN THE CHANNEL.



UNDERGROUND CABLE TRENCH
N.T.S.



PIPE INSTALLATION DETAIL
NOT TO SCALE

1. ALTERNATIVE CONSTRUCTION METHODS OR PAYMENT METHODS SHALL BE APPROVED IN ADVANCE BY THE CITY.
2. IN PAVED AREAS, DEPTHS OF GRAVEL AND HOT MIX ASPHALT PAVEMENT SHALL MATCH THE GREATER OF EXISTING CONDITIONS OR THE REQUIREMENTS FOR THE CORRESPONDING STREET CLASSIFICATION.
3. DIMENSION "B" SHALL BE SUFFICIENT TO ALLOW CRUSHED STONE BEDDING TO BE PLACED AND COMPACTED UNDER THE HAUNCHES OF THE PIPE; BUT IN ALL CASES "B" SHALL BE AT LEAST 9".
4. DIMENSION "A" IS THE MAXIMUM WIDTH ALLOWED FOR CALCULATING PAY QUANTITIES UNDER ITEMS 203.25 GRANULAR BORROW, 203.29 CRUSHED STONE, 206.06 STRUCTURAL EARTH EXCAVATION, AND 206.17 STRUCTURAL ROCK EXCAVATION. DIMENSION "A" SHALL BE BASED ON PIPE DIAMETER, AS SET FORTH IN THE FOLLOWING TABLE.

PIPE DIAMETER, "D" (INCHES)	MAX. TRENCH WIDTH, "A" (FEET)
6	4.0
8	4.0
10	4.0
12	5.0
15	5.0
18	5.0
21	6.0
24	6.0
27	6.0
30	7.0
36	7.0
42	8.0
48	8.0

PIPE INSTALLATION DETAIL - NOTES
NOT TO SCALE

NO.	DATE	DESCRIPTION
1	1/24/12	Submitted America Site Plan
2	3/12/12	Revisions for Level I & II Applications
3	8/29/12	Revisions for Level I & II Applications
4	11/02/12	Revisions for Level I & II Applications
5	4/15/13	Revisions for Level I & II Applications
6	5/24/13	Revisions for Level I & II Applications



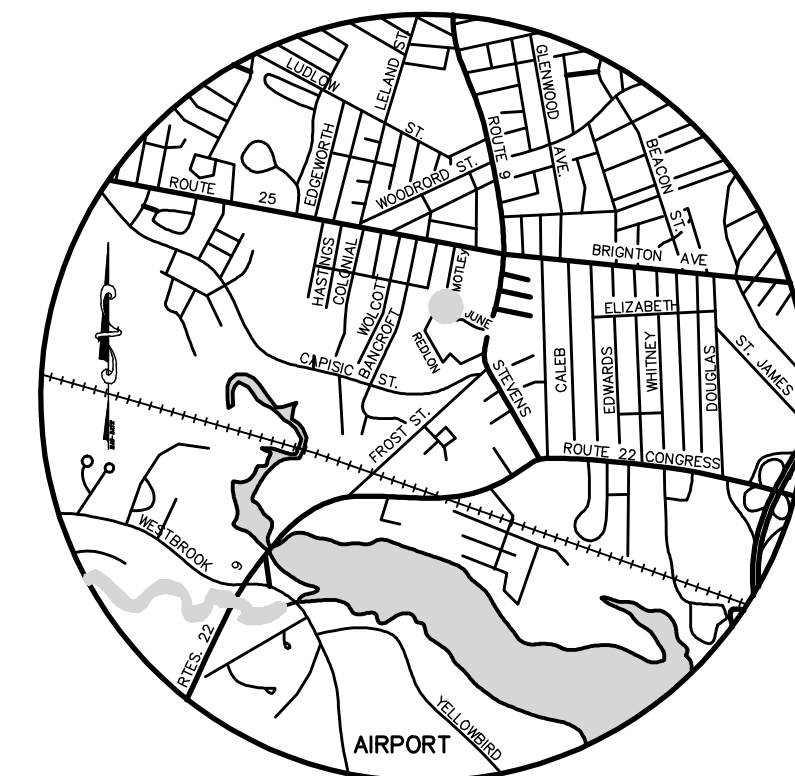
BH2M
Berry, Huff, MacDonald, Milligan Inc.
Engineers, Surveyors
28 State Street
Portland, Maine 04108
Tel: (207) 859-2771
Fax: (207) 859-4550

FOR
Chabad Lubavitch
Bancroft Street
Portland, Maine

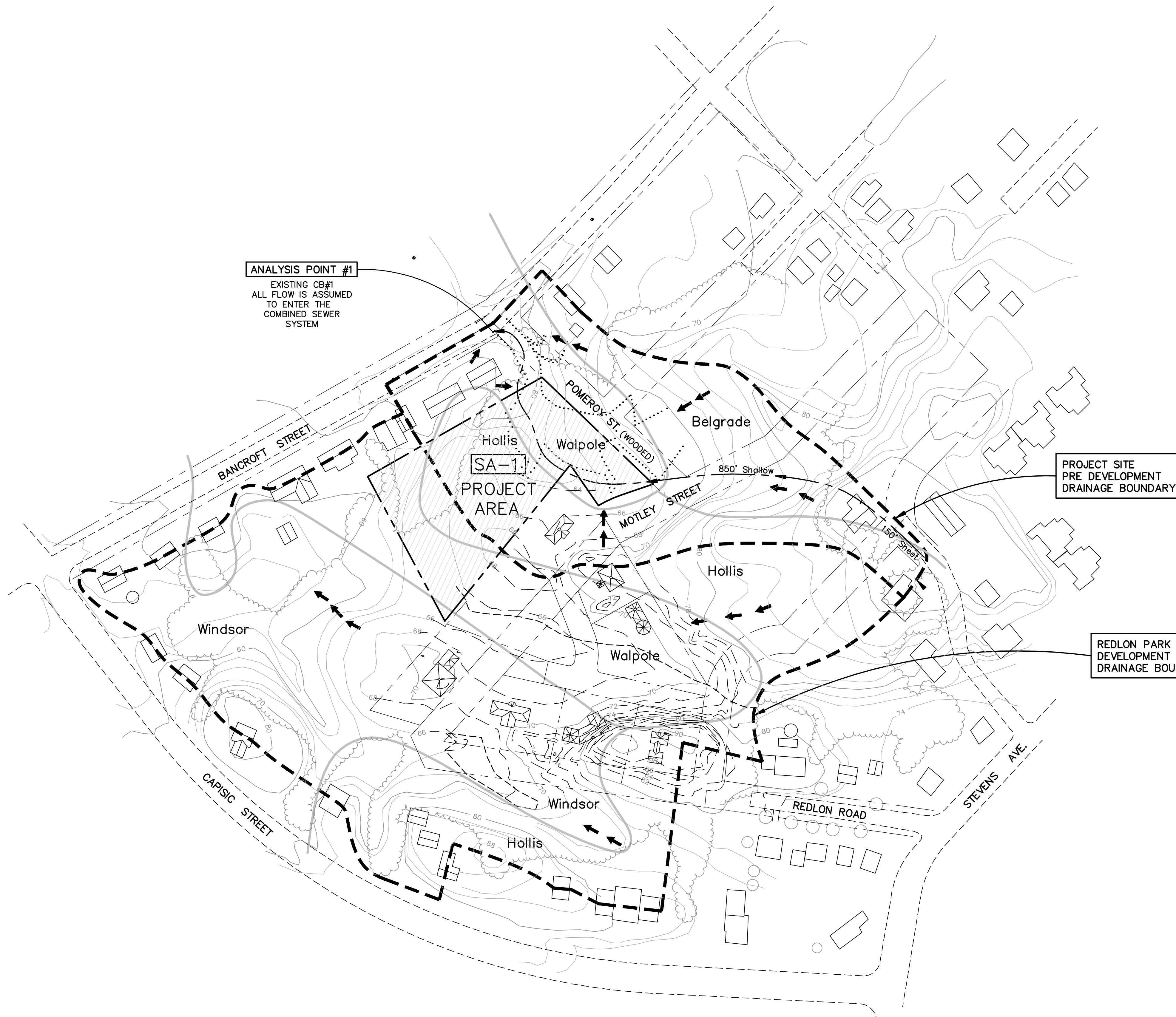
LAND OF
CHABAD LUBAVITCH OF MAINE INC.
POMEROY STREET
PORTLAND, MAINE

DESIGNED	DATE
W. Thompson	Jan. 2012
DRAWN	SCALE
Dept.	As Noted
CHECKED	JOB. NO.
W. Thompson	11093

SHEET
4
REPRODUCTION OR REUSE OF THIS DOCUMENT WITHOUT THE EXPRESSED WRITTEN CONSENT OF BH2M INC. IS PROHIBITED



LOCATION MAP
SCALE: 1" = .5 MILES



ANALYSIS POINT #1
EXISTING CB#1
ALL FLOW IS ASSUMED
TO ENTER THE
COMBINED SEWER
SYSTEM

PROJECT SITE
PRE DEVELOPMENT
DRAINAGE BOUNDARY

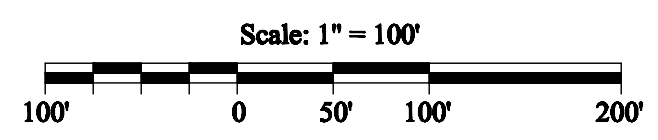
REDLON PARK POST
DEVELOPMENT
DRAINAGE BOUNDARY

SOILS LEGEND

SYMBOL	DESCRIPTION
—	SOIL BOUNDARY LINES
- - -	LIMIT OF WETLANDS
- - - - -	DRAINAGE BOUNDARY
←	FLOW DIRECTION

HYDROLOGIC SOIL GROUP

SOIL	GROUP
HOLLIS	C/D
WINDSOR	A
WALPOLE	C
BELGRADE	B



NOTES:

- TOPOGRAPHY: PLAN ENTITLED "DRAINAGE ANALYSIS, REDLON PARK" DATED JUNE 4, 1997, BY PINKHAM & GREER.
- BOUNDARY: BH2M
ROBER C. LIBBY JR. PLS #2190
28 STATE STREET
GORHAM, MAINE
- WETLAND DELINEATION: MARK HAMPTON & ASSOCIATES
PORTLAND, MAINE
- BENCHMARK: SURVEY CONTROL POINT #9
PK NAIL SET IN PAVEMENT ON BANCROFT STREET, ELEVATION=58.89'
CITY OF PORTLAND DATUM
- SOILS: CUMBERLAND COUNTY SOILS SURVEY, MEDIUM INTENSITY SOILS MAPS.

NO.	DATE	REVISION DESCRIPTION
1	3/12/12	Submitted Level I & II Site Plans
2	8/29/12	Revisions for Level I & II Applications
3	11/12/12	Revisions for Level I & II Applications Per City Comments
4	4/15/13	Revisions for Level I & II Applications Per City Comments
5	5/24/13	Revisions for Level I & II Applications Per City Comments



BH2M
Berry, Huff, MacDonald, Milligan Inc.
Engineers, Surveyors
28 State Street
Covington, Maine 04038
Tel: (207) 859-2771
Fax: (207) 859-8550

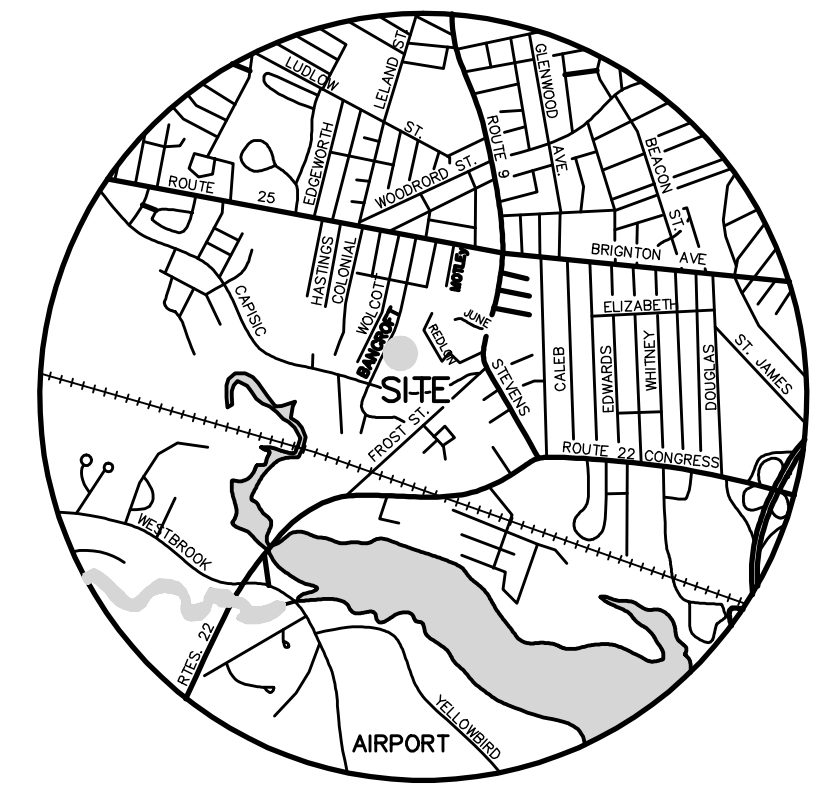
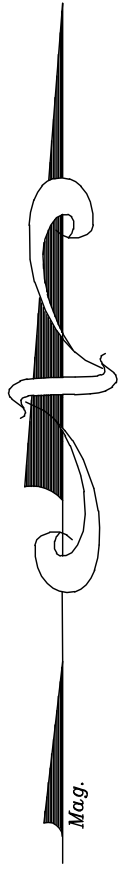
FOR
Chabad Lubobitch
Bancroft Street
Portland, Maine

PRE DEVELOPMENT DRAINAGE PLAN
LAND OF
CHABAD LUBOBITCH OF MAINE INC.
POMEROY STREET
PORTLAND, MAINE

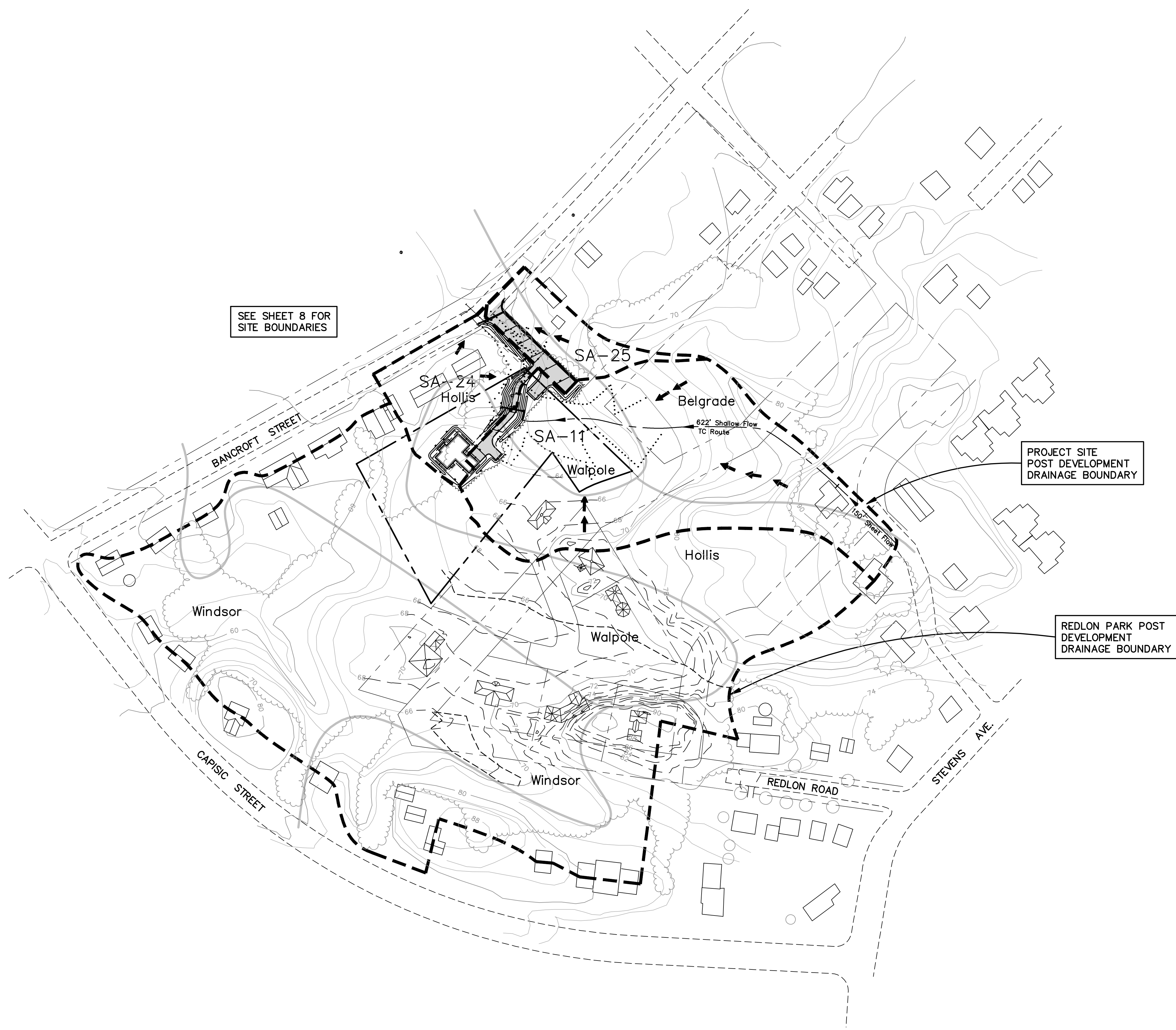
DESIGNED L. Berry	DATE Jan. 2012
DRAWN Dept.	SCALE As Noted
CHECKED L. Berry	JOB. NO. 11093

SHEET
6

REPRODUCTION OR REUSE OF THIS DOCUMENT WITHOUT THE EXPRESSED WRITTEN CONSENT OF BH2M INC. IS PROHIBITED



LOCATION MAP
SCALE: 1" = .5 MILES



SEE SHEET 8 FOR
SITE BOUNDARIES

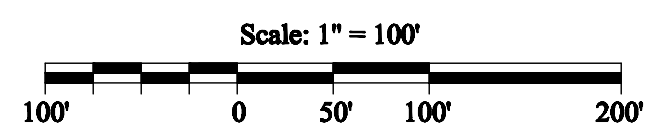
PROJECT SITE
POST DEVELOPMENT
DRAINAGE BOUNDARY

REDLON PARK
POST DEVELOPMENT
DRAINAGE BOUNDARY

SOILS LEGEND

SYMBOL	DESCRIPTION
—	SOIL BOUNDARY LINES
- - -	LIMIT OF WETLANDS
- - - - -	DRAINAGE BOUNDARY
←	FLOW DIRECTION

HYDROLOGIC SOIL GROUP	
SOIL	GROUP
HOLLIS	C/D
WINDSOR	A
WALPOLE	C
BELGRADE	B



NOTES:

- TOPOGRAPHY: PLAN ENTITLED "DRAINAGE ANALYSIS, REDLON PARK" DATED JUNE 4, 1997, BY PINKHAM & GREER.
- BOUNDARY: BH2M
ROBER C. LIBBY JR. PLS #2190
28 STATE STREET
GORHAM, MAINE
- WETLAND DELINEATION: MARK HAMPTON & ASSOCIATES
PORTLAND, MAINE
- BENCHMARK: SURVEY CONTROL POINT #9
PK NAIL SET IN PAVEMENT ON BANCROFT STREET, ELEVATION=58.89'
CITY OF PORTLAND DATUM
- SOILS: CUMBERLAND COUNTY SOILS SURVEY, MEDIUM INTENSITY SOILS MAPS.

NO.	DATE	REVISION DESCRIPTION
*	3/12/12	Submitted Level I & II Site Plans
*	8/29/12	Revisions for Level I & II Applications
*	11/12/12	Revisions for Level I & II Applications Per City Comments
*	4/15/13	Revisions for Level I & II Applications Per City Comments
*	5/24/13	Revisions for Level I & II Applications Per City Comments



BH2M
 Berry, Huff, McDonald, Milligan Inc.
 Engineers, Surveyors
 28 State Street
 Gorham, Maine 04038
 Tel: (207) 859-2771
 Fax: (207) 859-8550

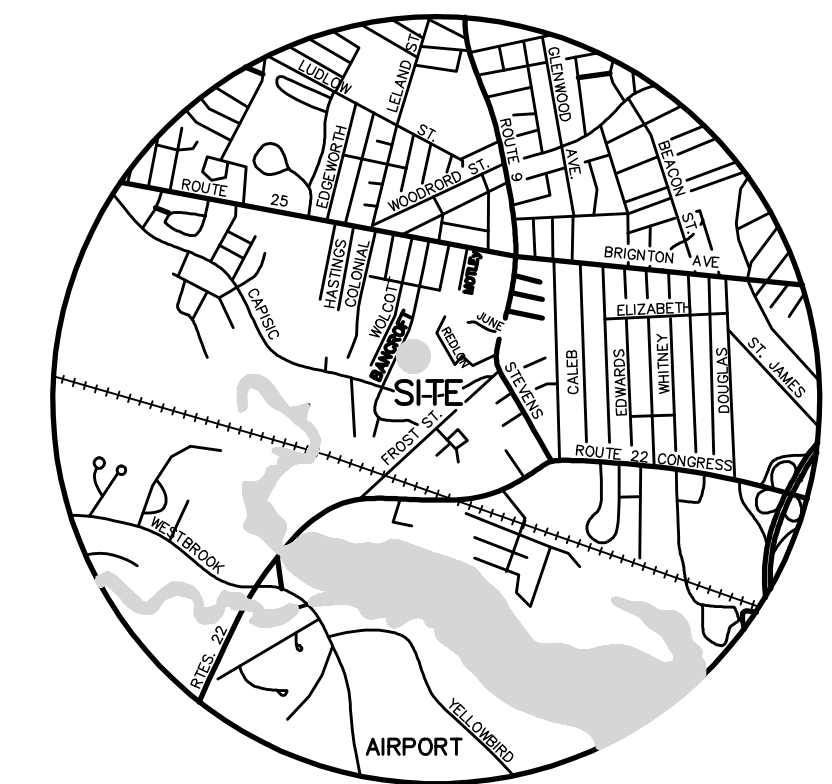
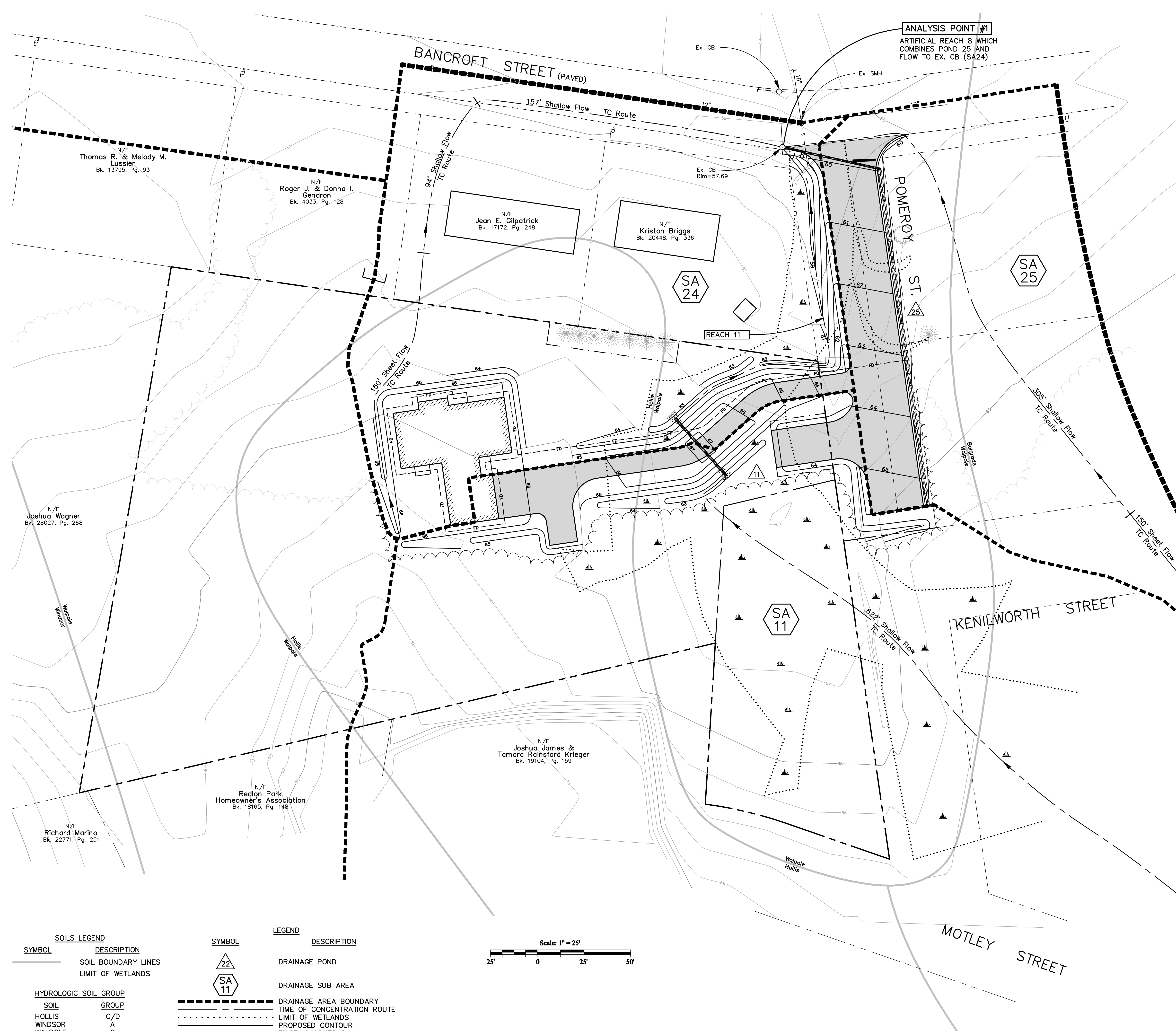
FOR
 Chabad Lubovitch
 Bancroft Street
 Portland, Maine

VICINITY
 POST DEVELOPMENT
 LAND OF
 CHABAD LUBOVITCH OF MAINE INC.
 POMEROY STREET
 PORTLAND, MAINE

DESIGNED L. Berry	DATE Jan. 2012
DRAWN Dept.	SCALE As Noted
CHECKED L. Berry	JOB. NO. 11093

SHEET
7

REPRODUCTION OR REUSE OF THIS DOCUMENT WITHOUT THE EXPRESSED WRITTEN CONSENT OF BH2M INC. IS PROHIBITED



LOCATION MAP
SCALE: 1" = .5 MILES

NO.	DATE	DESCRIPTION
1	3/12/12	Submitted Level I & II Site Plans
2	8/29/12	Revisions for Level I & II Applications
3	11/22/12	Revisions for Level I & II Applications Per City Comments
4	4/15/13	Revisions for Level I & II Applications Per City Comments
5	5/24/13	Revisions for Level I & II Applications Per City Comments



BH2M
 Berry, Huff, McDonald, Milligan Inc.
 Engineers, Surveyors
 28 State Street
 Gorham, Maine 04038
 Tel: (207) 859-2771
 Fax: (207) 859-8550

FOR
 Chabad Lubbovitch
 Bancroft Street
 Portland, Maine

**POST DEVELOPMENT
 DRAINAGE PLAN**
 LAND OF
 CHABAD LUBBOVITCH OF MAINE INC.
 POMEROY STREET
 PORTLAND, MAINE

DESIGNED L. Berry	DATE Jan. 2012
DRAWN Dept.	SCALE As Noted
CHECKED L. Berry	JOB. NO. 11093

SHEET
8

REPRODUCTION OR REUSE OF THIS DOCUMENT WITHOUT THE EXPRESSED WRITTEN CONSENT OF BH2M INC. IS PROHIBITED

- NOTES:
- TOPOGRAPHY: BH2M ROBER C. LIBBY JR. PLS #2190 28 STATE STREET GORHAM, MAINE
 - BOUNDARY: BH2M ROBER C. LIBBY JR. PLS #2190 28 STATE STREET GORHAM, MAINE
 - WETLAND DELINEATION: MARK HAMPTON & ASSOCIATES PORTLAND, MAINE
 - BENCHMARK: SURVEY CONTROL POINT #9 PK NAIL SET IN PAVEMENT ON BANCROFT STREET, ELEVATION=58.89' CITY OF PORTLAND DATUM
 - SOILS: CUMBERLAND COUNTY SOILS SURVEY, MEDIUM INTENSITY SOILS MAPS.
 - PROPOSED IMPERVIOUS: 12,451 S.F.

SOILS LEGEND

SYMBOL	DESCRIPTION
---	SOIL BOUNDARY LINES
- - - -	LIMIT OF WETLANDS

HYDROLOGIC SOIL GROUP

SOIL	GROUP
HOLLIS	C/D
WINDSOR	A
WALPOLE	C
BELGRADE	B

LEGEND

SYMBOL	DESCRIPTION
△ 22	DRAINAGE POND
△ SA 11	DRAINAGE SUB AREA
---	DRAINAGE AREA BOUNDARY
- - - -	TIME OF CONCENTRATION ROUTE
.....	LIMIT OF WETLANDS
---	PROPOSED CONTOUR
---	EXISTING CONTOUR
←	FLOW DIRECTION

