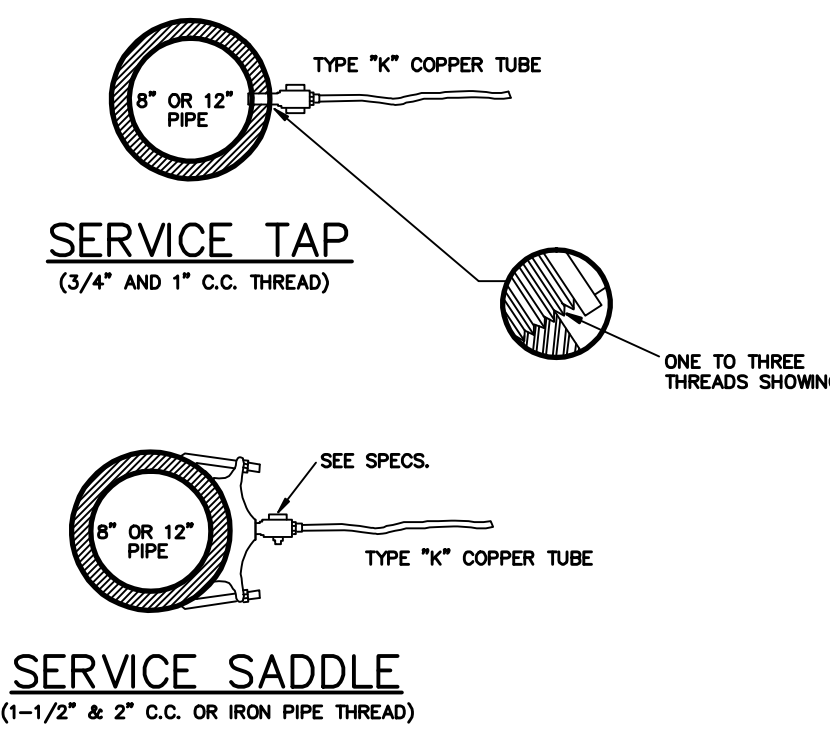
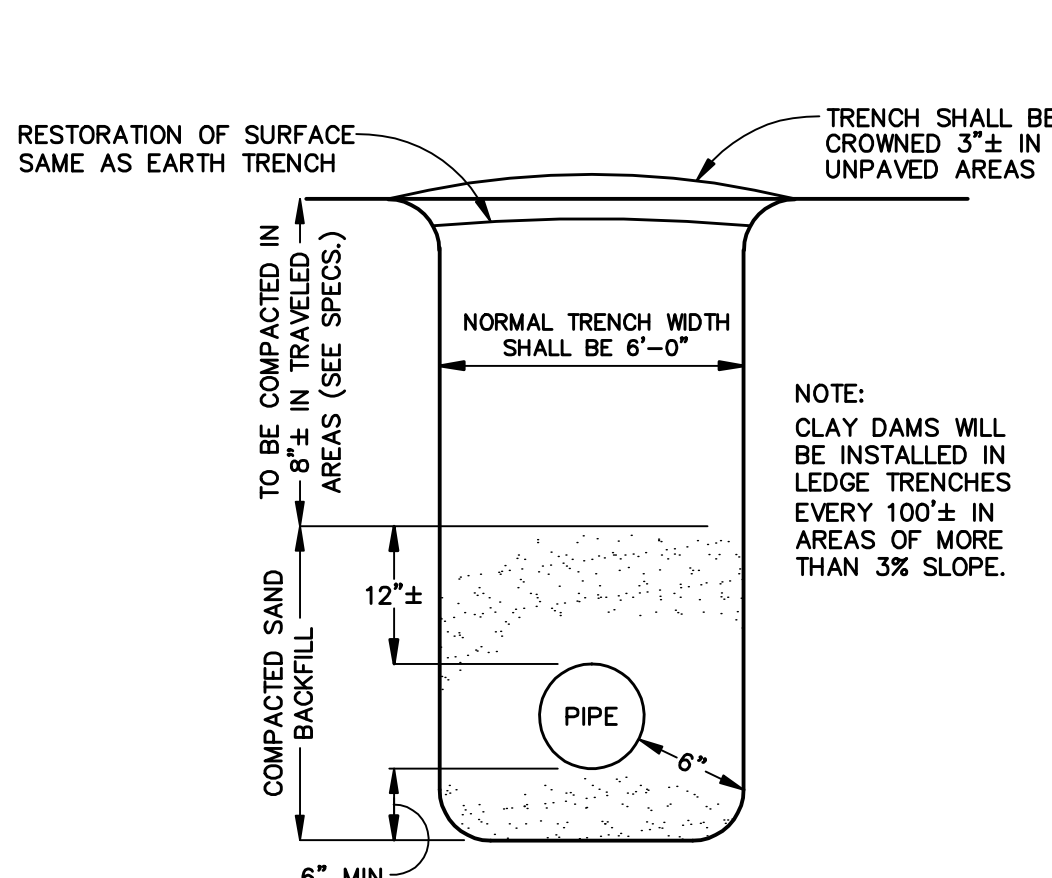


TYPICAL SERVICE CONNECTION
N.T.S.

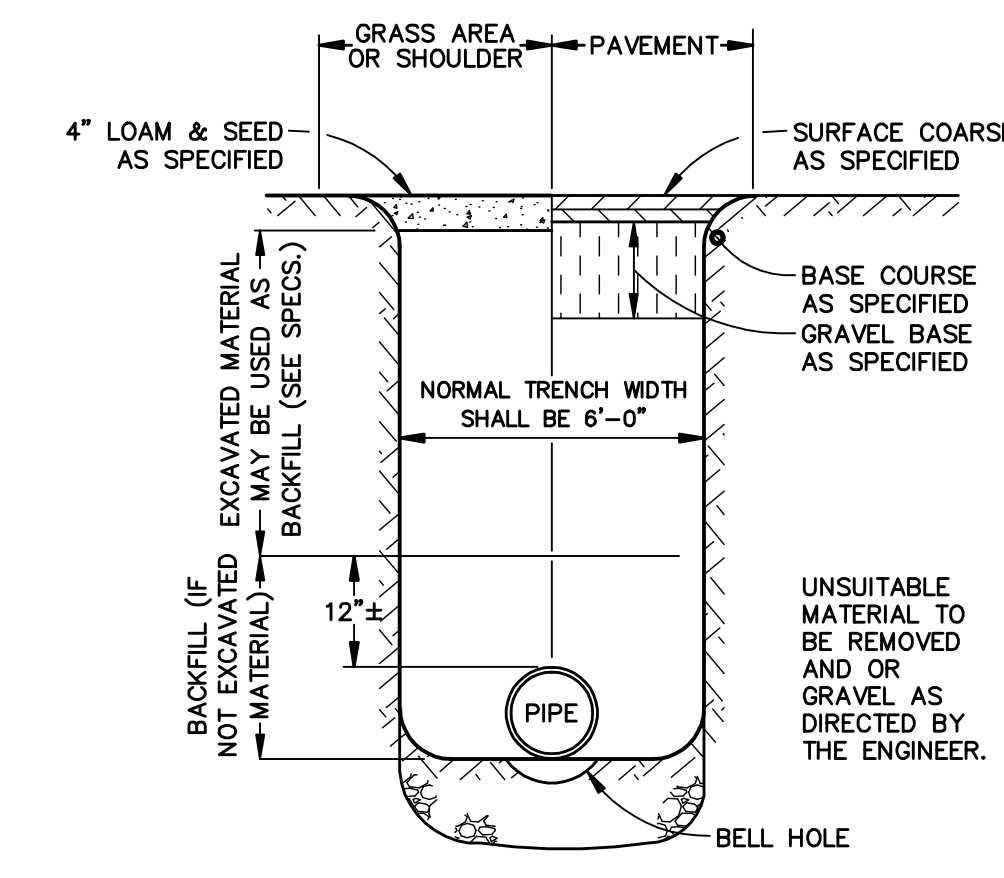


SERVICE SADDLE
(1-1/2\"/>

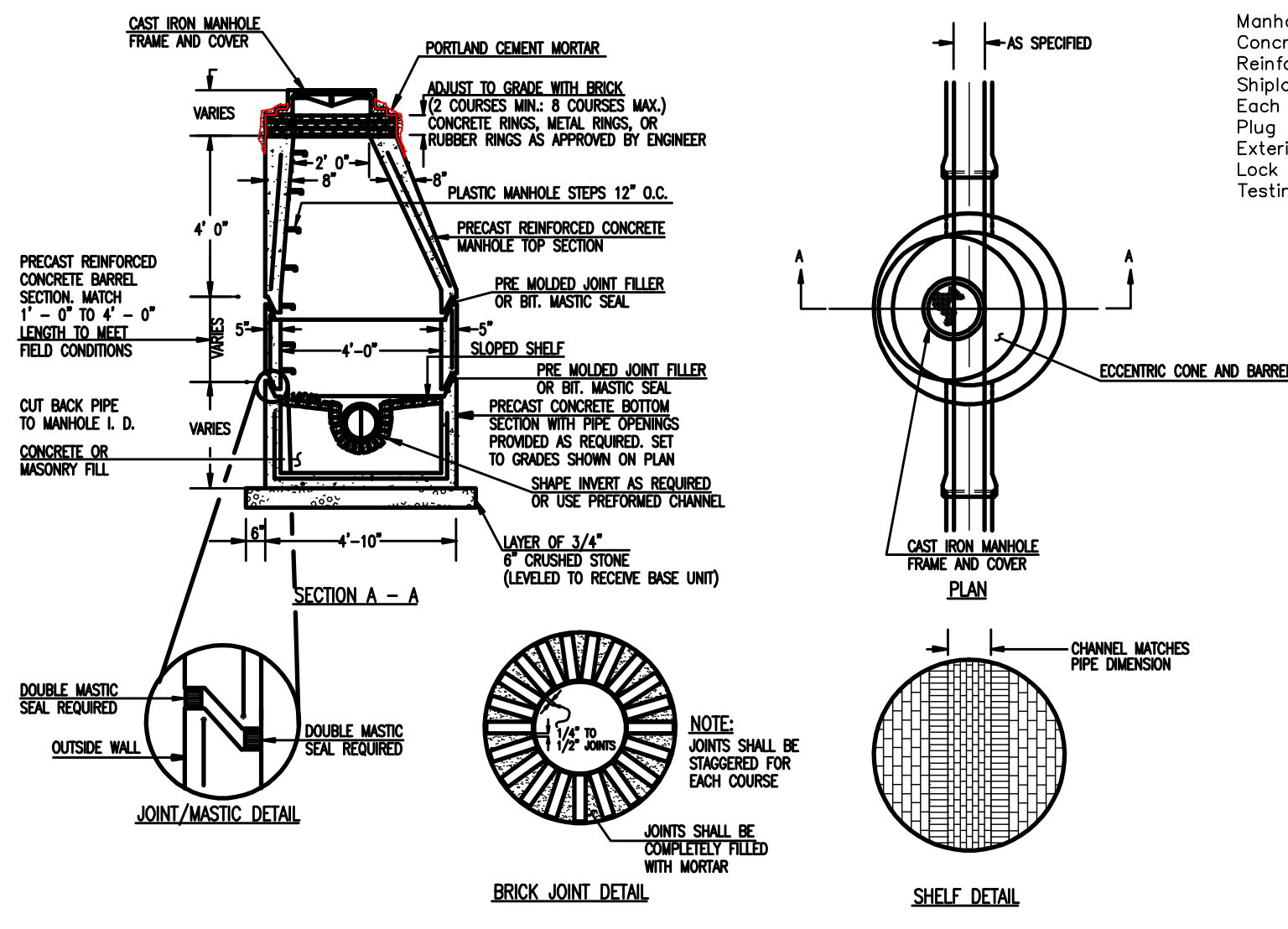
NOTE: SERVICE CONNECTIONS (DIRECT TAPS AND SERVICE CLAMPS) WILL BE INSTALLED SO THAT THE OUTLET IS AT AN ANGLE OF NOT MORE THAN 45° ABOVE THE HORIZONTAL. ALWAYS PUT A BEND OR "GOOSENECK" IN THE SERVICE LINE PRIOR TO CONNECTING TO PROVIDE FLEXIBILITY AND "SNUG" TO COUNTERACT THE EFFECTS OF A LOAD DUE TO SETTLEMENT OR EXPANSION AND/OR CONTRACTION (SEE DETAILS).



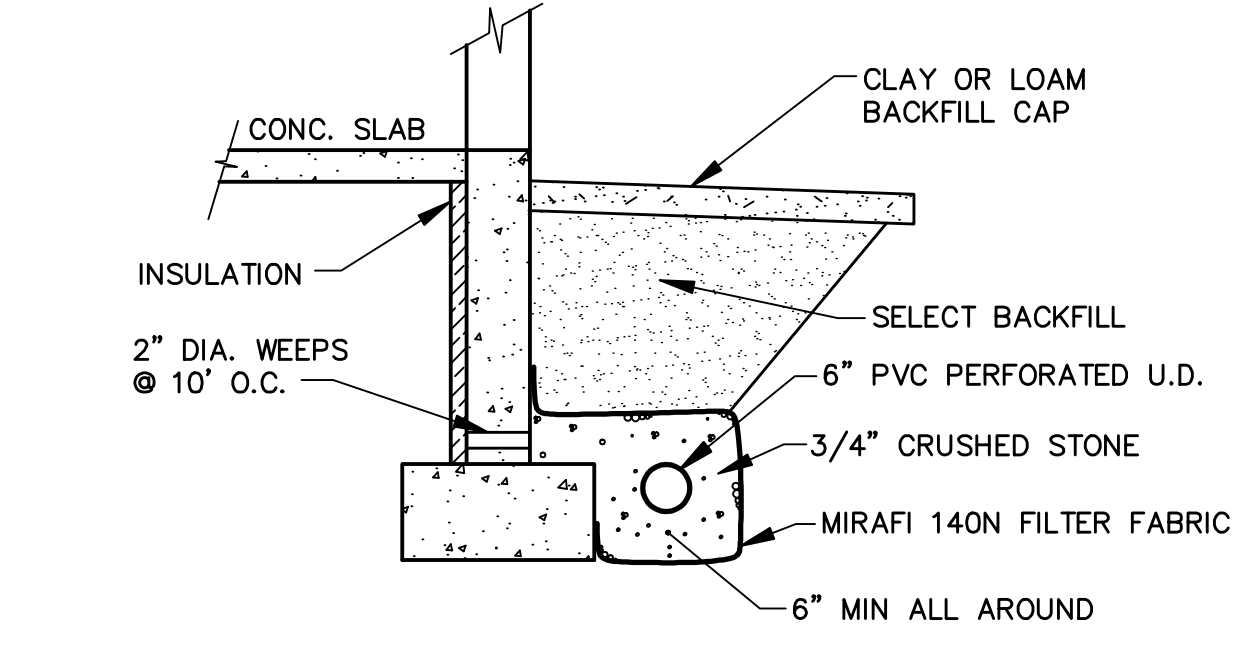
WATER THROUGH LEDGE TRENCH
N.T.S.



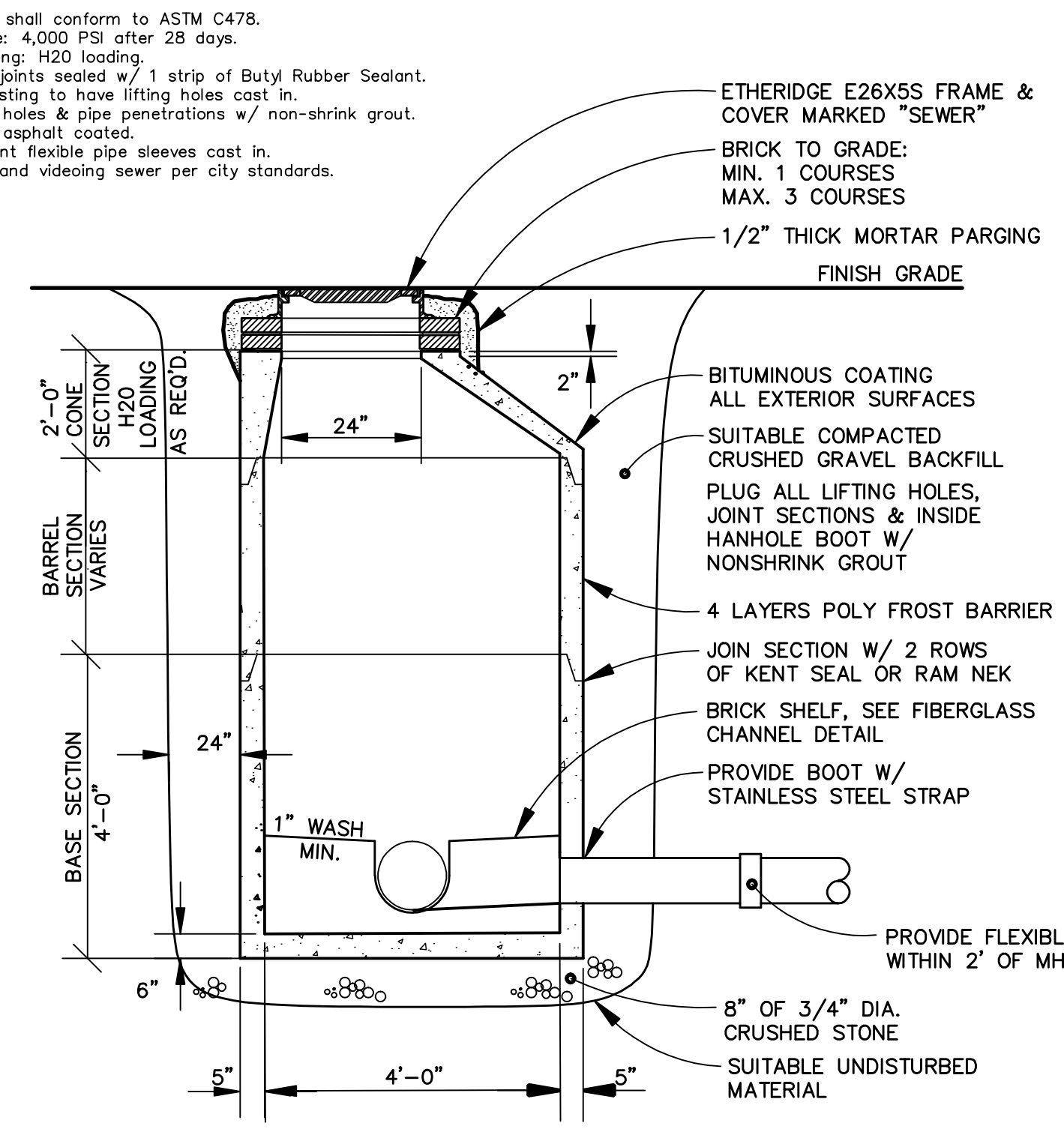
WATER THROUGH EARTH TRENCH
N.T.S.



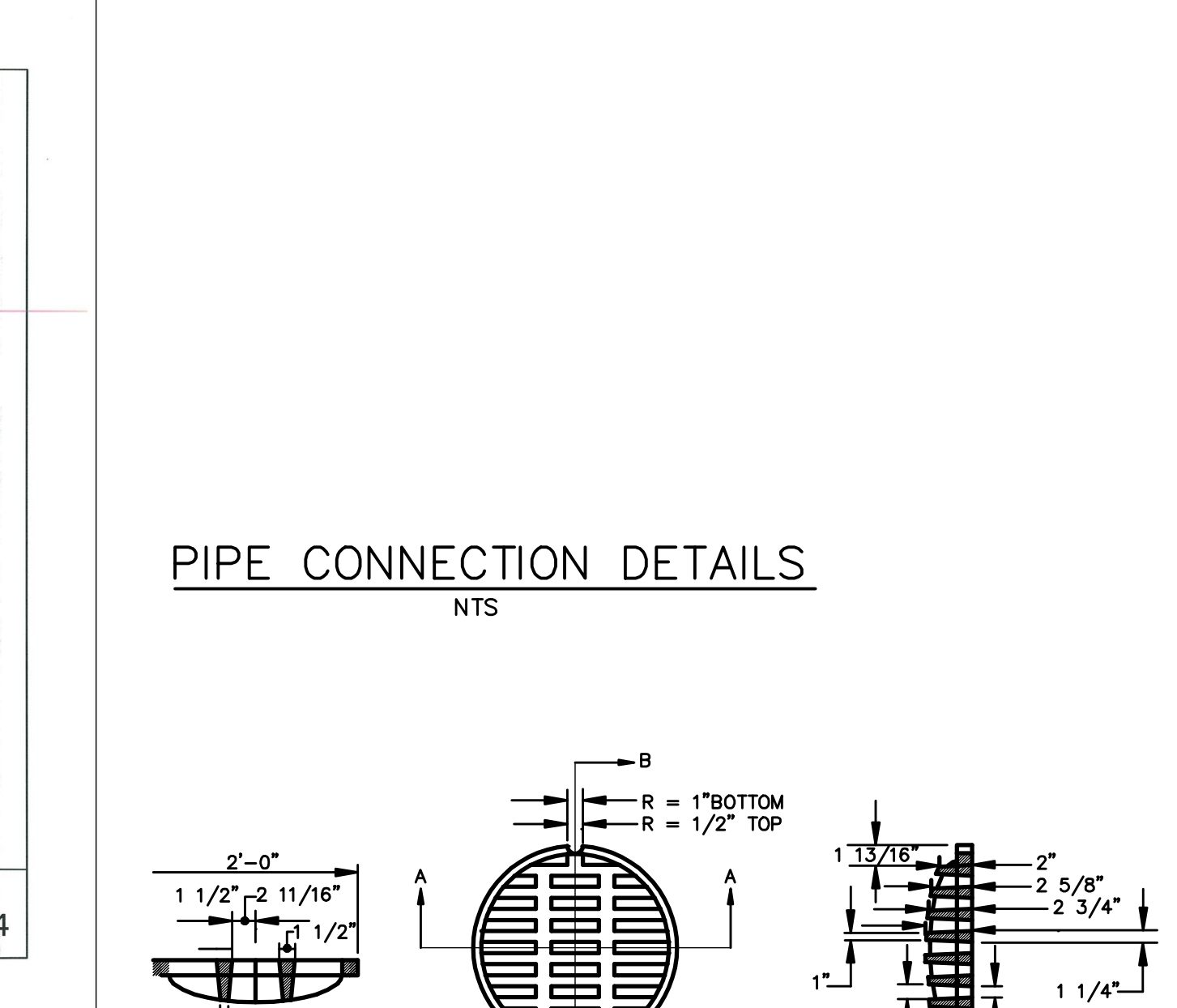
PRECAST CONCRETE MANHOLE TYPE "A"
NOT TO SCALE



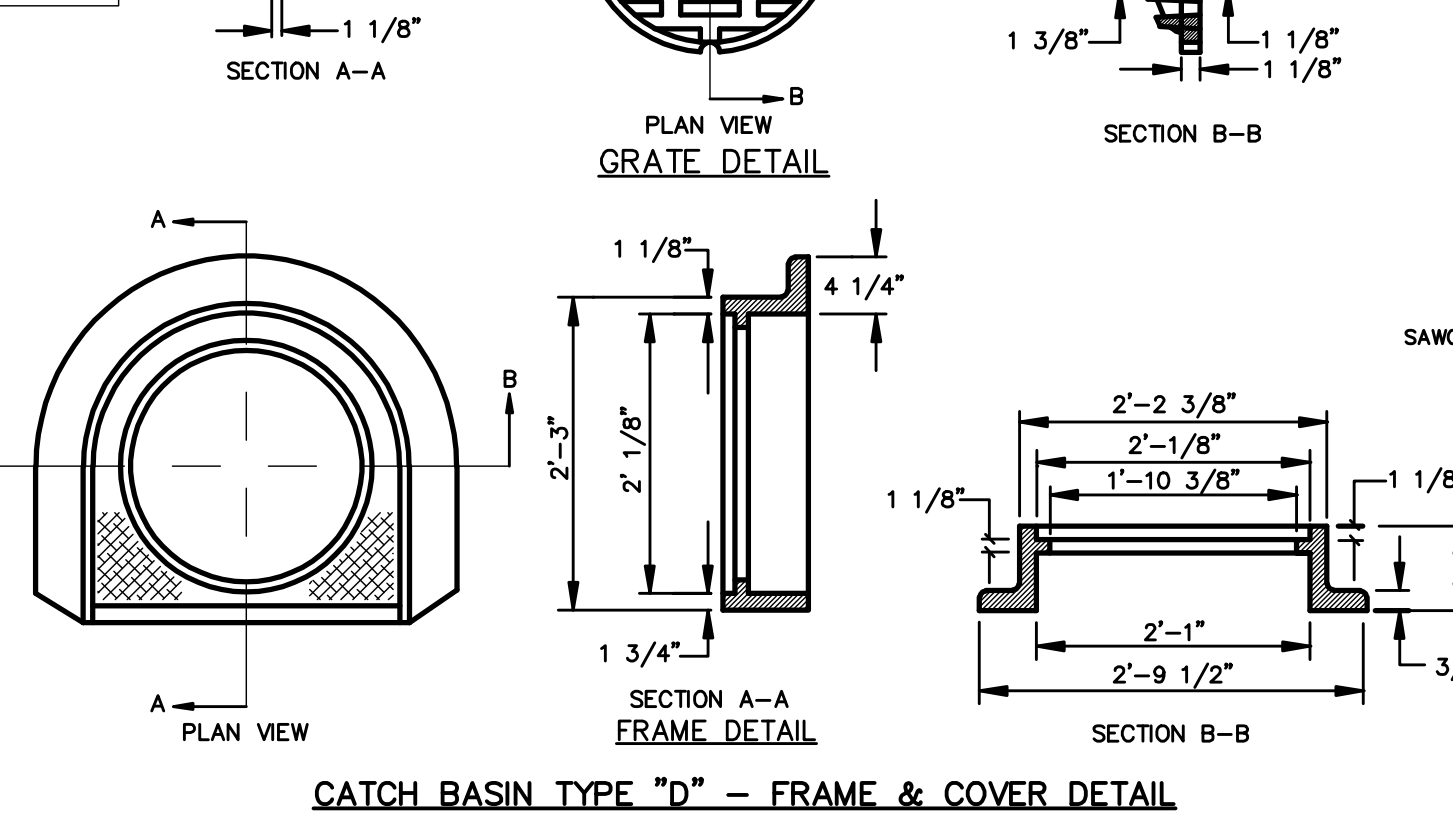
FOUNDATION DRAIN DETAIL
N.T.S.



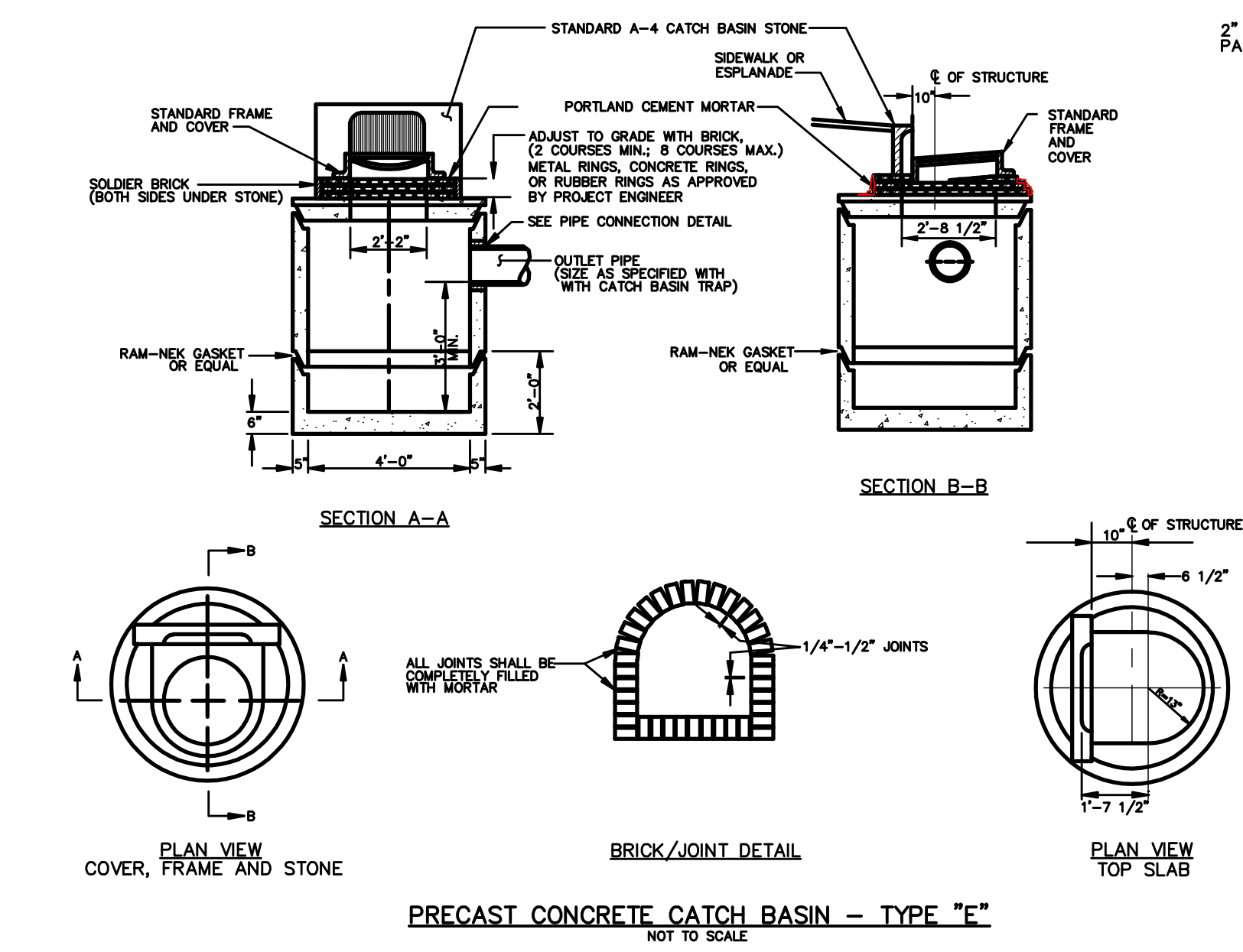
PRECAST CONCRETE SANITARY SEWER MANHOLE
N.T.S.



PIPE CONNECTION DETAILS
N.T.S.

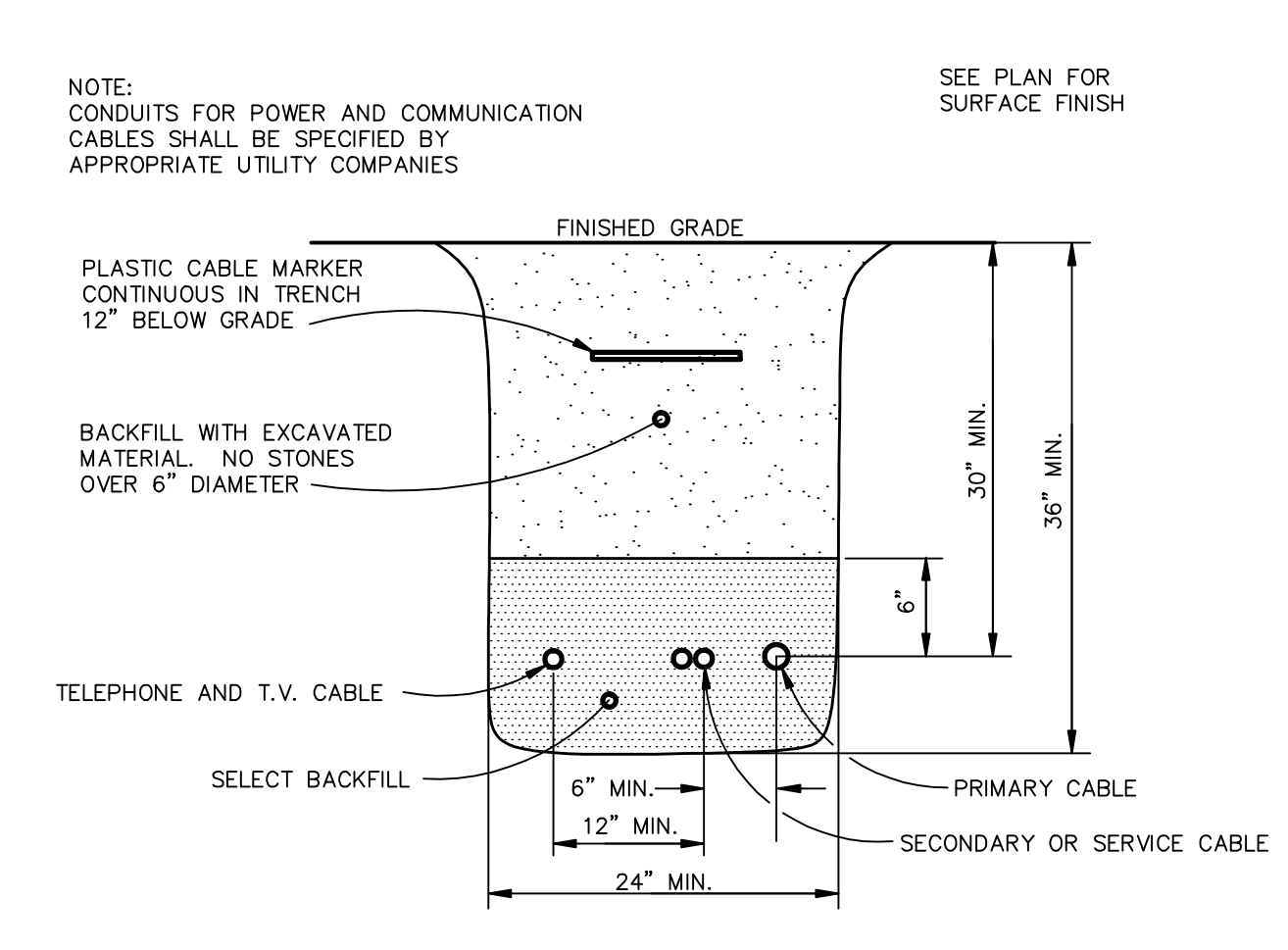


CATCH BASIN TYPE "D" - FRAME & COVER DETAIL

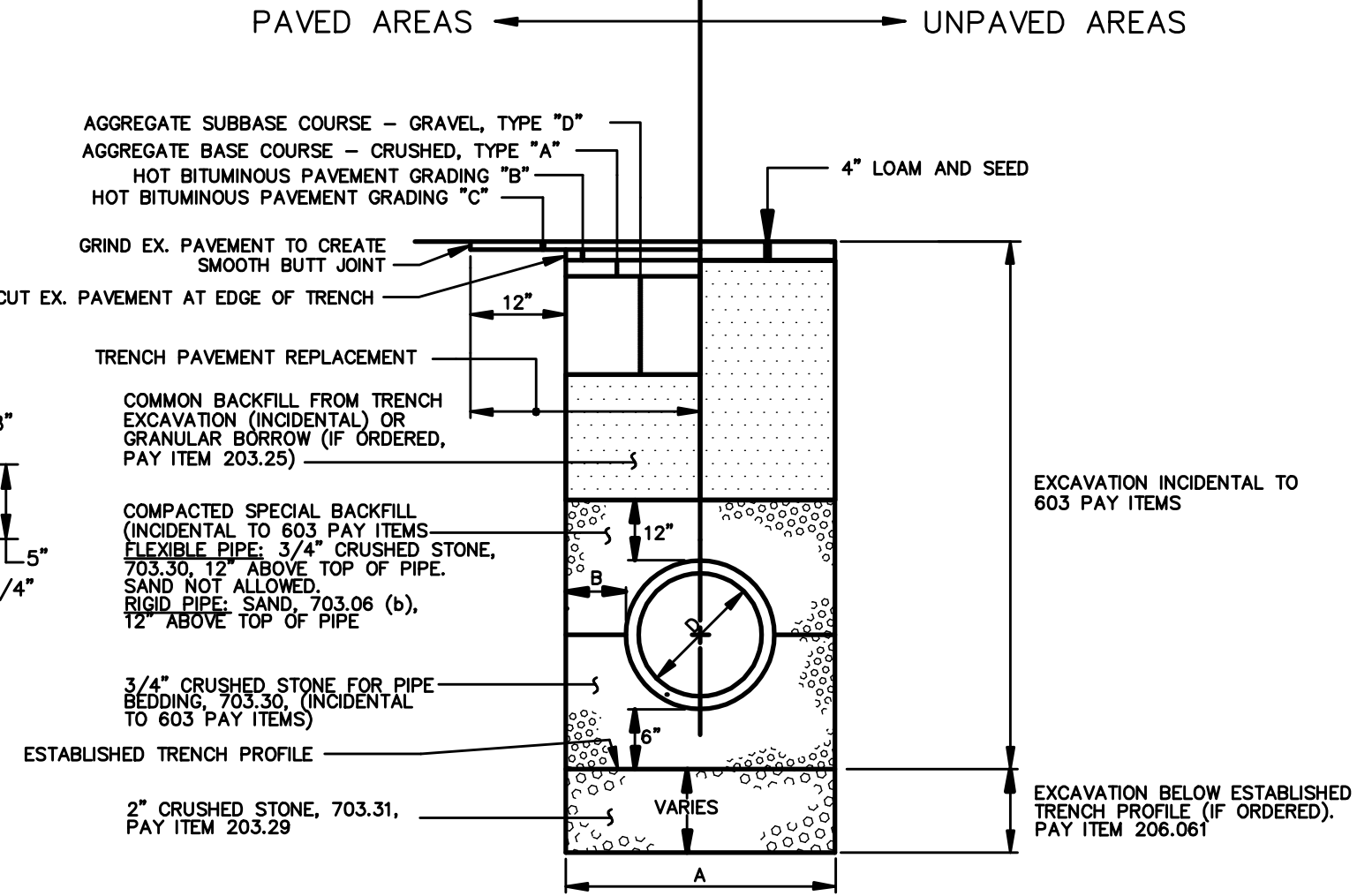


PRECAST CONCRETE CATCH BASIN - TYPE "E"
NOT TO SCALE

- GENERAL NOTES FOR MANHOLES AND CATCH BASINS**
- ALL CONCRETE SHALL BE CLASS "A" AND HAVE A MINIMUM ULTIMATE COMPRESSIVE STRENGTH OF 4000 LBS. PER SQ. INCH AT THE END OF 28 DAYS, UNLESS OTHERWISE NOTED.
 - PRECAST REINFORCED CONE BARREL MANUFACTURED PER ASTM SPEC. C-478-67
 - SEWER BRICK SHALL CONFORM TO ASTM SPEC. DESIGNATE ON C-32-63, GRADE MA AND SA.
 - ALL MANHOLES SHALL HAVE A BITUMINOUS WATERPROOFING APPLIED TO THE EXTERIOR SURFACE. IF CONSTRUCTED OF BRICK MASONRY, SURFACE SHALL BE PLASTERED WITH A SMOOTH MORTAR FINISH 3/8" THICK. AFTER THE MORTAR HAS SET, THE SURFACE SHALL BE WATERPROOFED AS REQUIRED BY SUPPLEMENTAL SPECIFICATIONS SECTION 604.
 - CASTINGS SHALL CONFORM TO ASTM DESIGNATION A48-CLASS 35. ALL PARTS OF CASTINGS, EXCEPT FINISHED SURFACE, SHALL RECEIVE A COAT OF COAL TAR PITCH VARNISH OR ASPHALTUM PAINT WHICH SHALL BE SMOOTH AND TOUGH BUT NOT BRITTLE.
 - MANHOLES MAY BE CONSTRUCTED OF MASONRY, PRECAST REINFORCED CONCRETE, OR CAST IN PLACE.
 - ALL PRECAST MANHOLES AND CATCH BASINS SHALL BE IDENTIFIED BY STATION AND OFFSET, PAINTED ON THE SIDE OF THE STRUCTURE BY THE MANUFACTURER.
 - STORM AND SEWER MANHOLES SHALL HAVE SOLID COVERS WITH ONE DRILLED PICK HOLE.
 - EXISTING MANHOLES, CATCH BASINS, FRAMES, AND COVERS SHALL BE SALVAGED BY THE CONTRACTOR, AND SHALL REMAIN THE PROPERTY OF THE CITY OF PORTLAND.
 - WHEN THE FLOW CHANGES DIRECTION IN A MANHOLE, THE CHANNEL ALIGNMENT SHALL FOLLOW A SMOOTH RADIUS. CHANNELS SHALL BE FORMED TO ACCEPT ALL INLET PIPES.
 - THE MANHOLE SHELF AND CHANNEL SHALL BE LINED WITH BRICK SET IN CEMENT MORTAR ON ALL SANITARY SEWER MANHOLES. BRICKS SHALL BE LAID FLAT ON THE SHELF AND ON EDGE IN THE CHANNEL.



UNDERGROUND CABLE TRENCH
N.T.S.



PIPE INSTALLATION DETAIL
NOT TO SCALE

- ALTERNATIVE CONSTRUCTION METHODS OR PAYMENT METHODS SHALL BE APPROVED IN ADVANCE BY THE CITY.
- IN PAVED AREAS, DEPTHS OF GRAVEL AND HOT MIX ASPHALT PAVEMENT SHALL MATCH THE GREATER OF EXISTING CONDITIONS OR THE REQUIREMENTS FOR THE CORRESPONDING STREET CLASSIFICATION.
- DIMENSION "B" SHALL BE SUFFICIENT TO ALLOW CRUSHED STONE BEDDING TO BE PLACED AND COMPACTED UNDER THE HAUNCHES OF THE PIPE; BUT IN ALL CASES "B" SHALL BE AT LEAST 9".
- DIMENSION "A" IS THE MAXIMUM WIDTH ALLOWED FOR CALCULATING PAY QUANTITIES UNDER ITEMS 203.25 GRANULAR BORROW, 203.29 CRUSHED STONE, 206.06 STRUCTURAL EARTH EXCAVATION, AND 206.17 STRUCTURAL ROCK EXCAVATION. DIMENSION "A" SHALL BE BASED ON PIPE DIAMETER, AS SET FORTH IN THE FOLLOWING TABLE.

PIPE DIAMETER, "D" (INCHES)	MAX. TRENCH WIDTH, "A" (FEET)
6	4.0
8	4.0
10	4.0
12	5.0
15	5.0
18	5.0
21	6.0
24	6.0
27	6.0
30	7.0
36	7.0
42	8.0
48	8.0

PIPE INSTALLATION DETAIL - NOTES
NOT TO SCALE

NO.	DATE	DESCRIPTION
1	1/24/12	Submitted America Site Plan
2	3/12/12	Submitted Level I & II Site Plans
3	8/29/12	Revisions for Level I & II Applications
4	11/02/12	Revisions for Level I & II Applications Per City Comments
5	4/15/13	Revisions for Level I & II Applications Per City Comments



BH2M
Berry, Huff, MacDonald, Milligan Inc.
Engineers, Surveyors
28 State Street
Portland, Maine 04108
Tel: (207) 859-2771
Fax: (207) 859-4550

FOR
Chabad Lubavitch
Bancroft Street
Portland, Maine

DETAIL SHEET
LAND OF
CHABAD LUBAVITCH OF MAINE INC.
POMEROY STREET
PORTLAND, MAINE

DESIGNED W. Thompson	DATE Jan. 2012
DRAWN Dept.	SCALE As Noted
CHECKED W. Thompson	JOB. NO. 11093

SHEET
4
REPRODUCTION OR REUSE OF THIS DOCUMENT WITHOUT THE EXPRESSED WRITTEN CONSENT OF BH2M INC. IS PROHIBITED