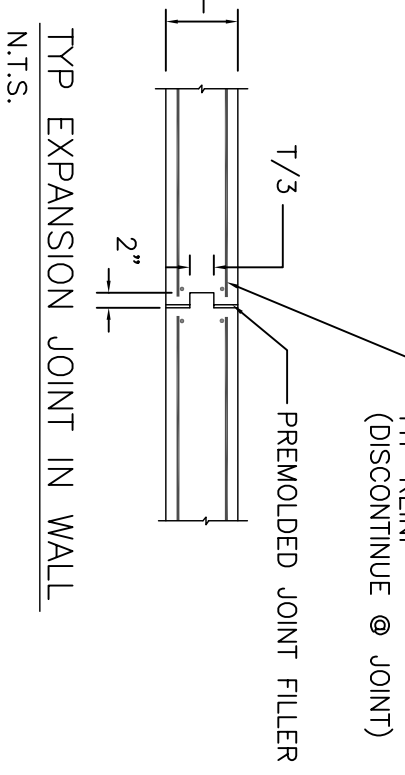
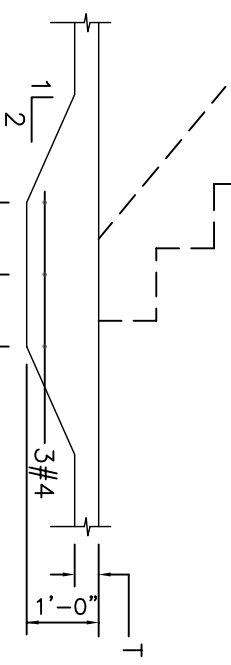


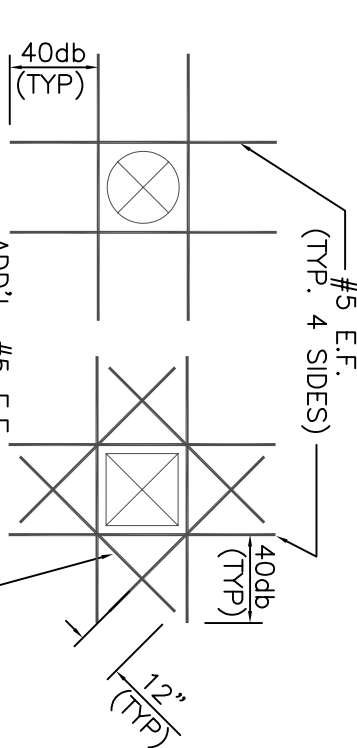
TYP. DETAIL @ DOOR OPNG.  
N.T.S.



TYP. EXPANSION JOINT IN WALL.  
N.T.S.



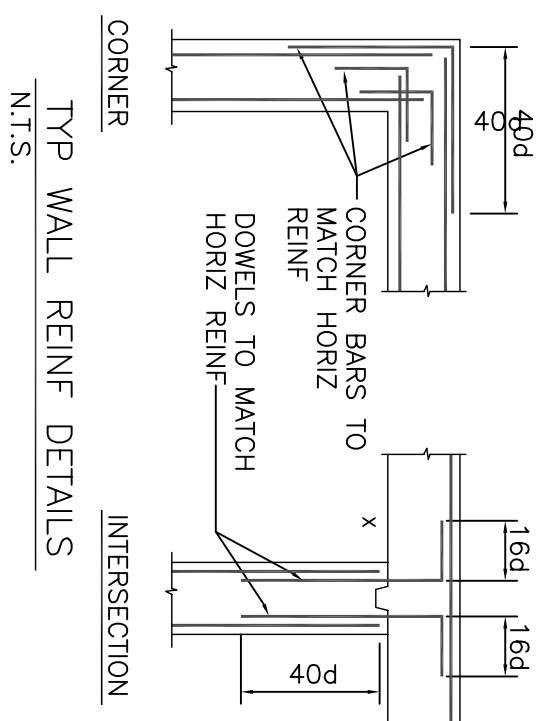
THICKENED SLAB AT STAIR DETAIL.  
N.T.S.



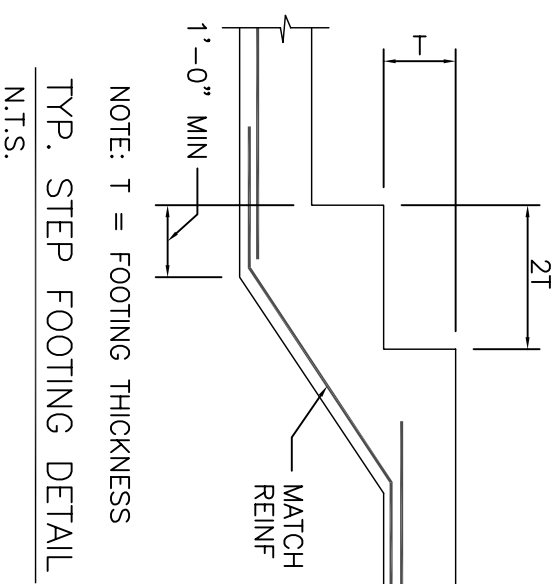
TYP. OPENING IN WALL OR SLAB.  
N.T.S.



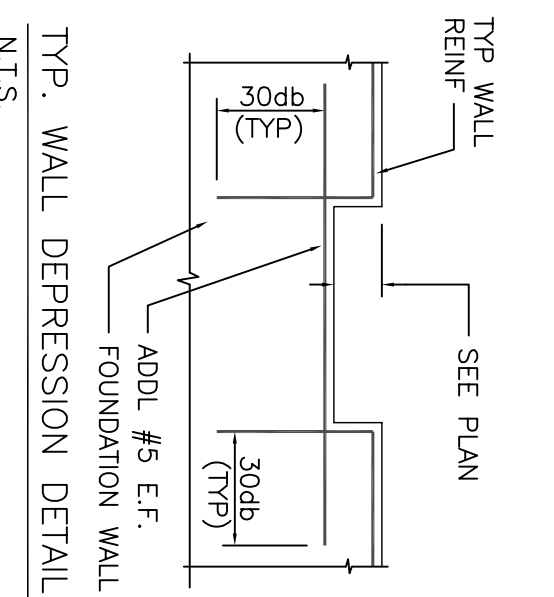
TYP. CONSTRUCTION JOINT IN WALL.  
N.T.S.



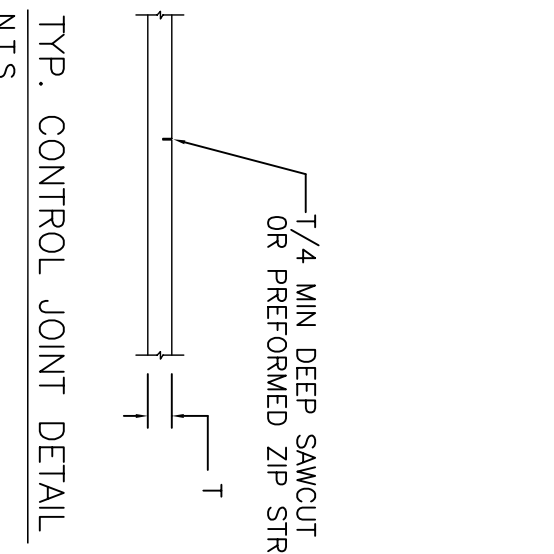
CORNER TYP. WALL REINF DETAILS.  
N.T.S.



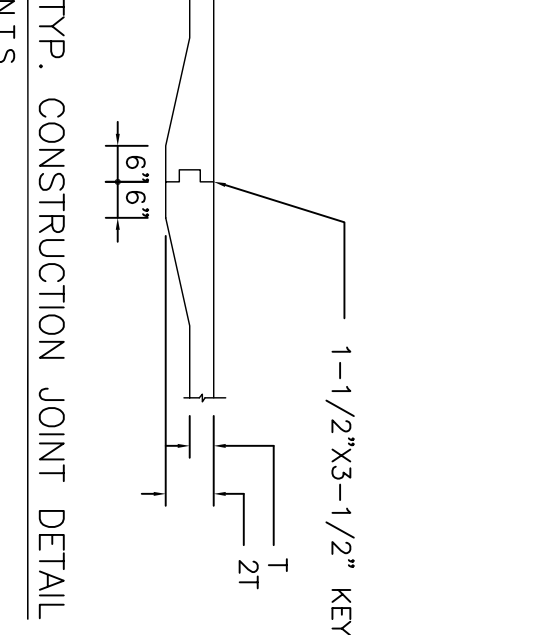
TYP. SLAB CORNER DETAIL @ DOOR.  
N.T.S.



TYP. WALL DEPRESSION DETAIL.  
N.T.S.



TYP. CONTROL JOINT DETAIL.  
N.T.S.

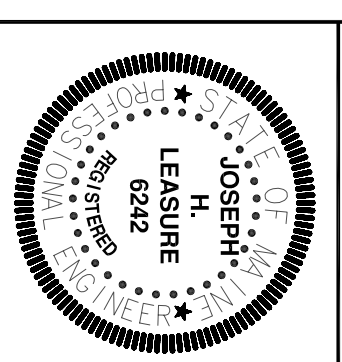


TYP. CONSTRUCTION JOINT DETAIL.  
N.T.S.

THESE DRAWINGS HAVE BEEN PREPARED BY L&L STRUCTURAL ENGINEERING SERVICES, INC. FOR THE PERMIT SET ONLY. THE DRAWINGS AND SPECIFICATIONS ARE THE PROPERTY OF L&L STRUCTURAL ENGINEERING SERVICES, INC. AND ARE NOT TO BE REPRODUCED OR ALTERED WITHOUT THE WRITTEN CONSENT OF L&L STRUCTURAL ENGINEERING SERVICES, INC.

**S3**  
**CHABAD HOUSE**  
 POMEROY STREET  
 PORTLAND, MAINE  
 SECTIONS & DETAILS

designed by:	rev.	date	description	appr'd
JHL	A	06/28/07	PERMIT SET ONLY FOR REVIEW BY AUTHORITIES HAVING JURISDICTION	JHL
drawn by: KSP	0	06/30/07	GENERAL REVISIONS AND FOR CONSTRUCTION	JHL
checked by: MFL				
scale: AS NOTED				
date: 06/28/08				
plot date: 06/28/08				
project #: 27046				



**L & L STRUCTURAL ENGINEERING SERVICES, INC.**  
 SIX Q STREET  
 SOUTH PORTLAND, MAINE 04106  
 PHONE: (207) 767-4830  
 FAX: (207) 799-5432