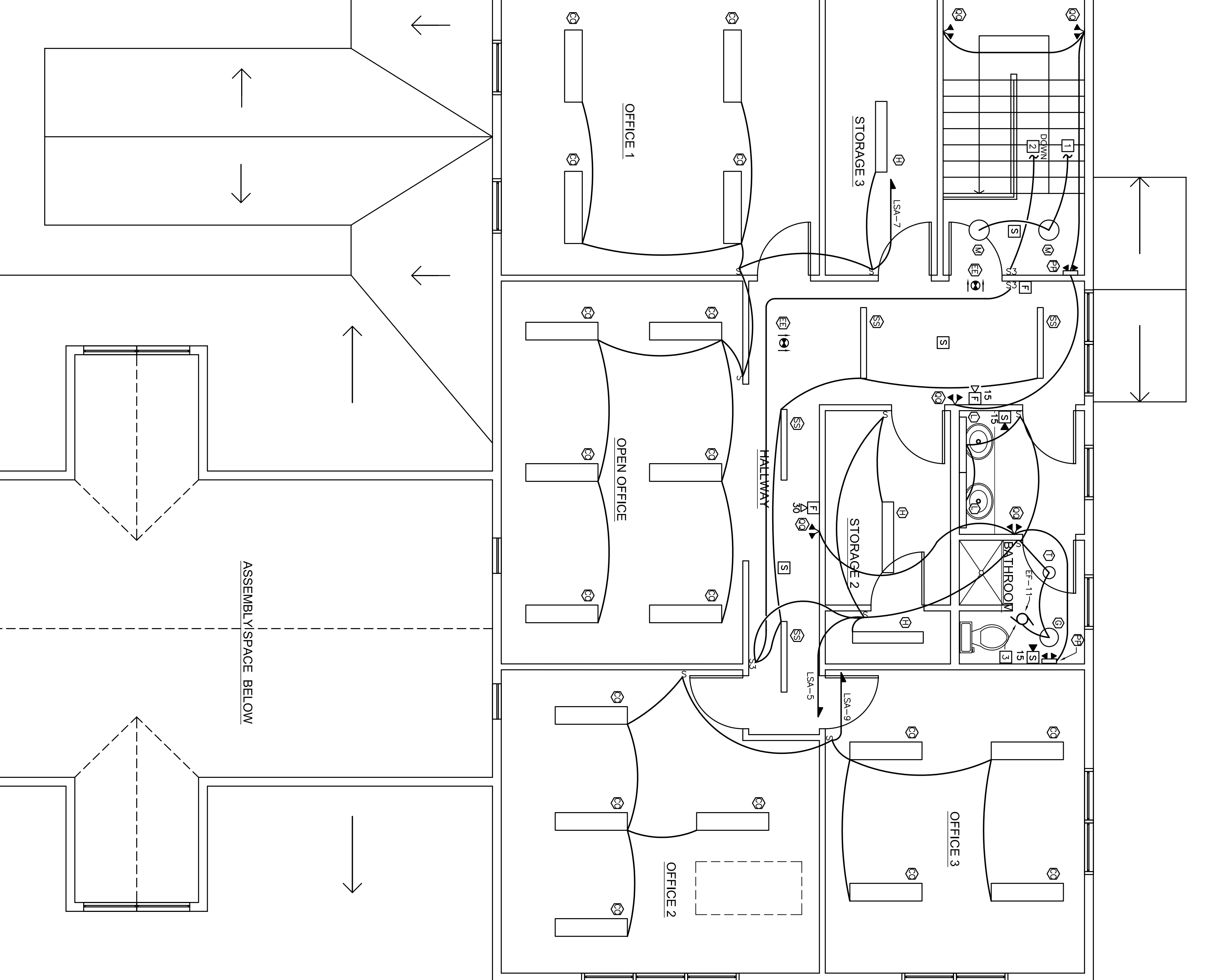


SECOND FLOOR LIGHTING AND FIRE ALARM PLAN  
SCALE: 1/4" = 1'-0"

CONSTRUCTION NOTES:  
 □ MOUNT CLOSET LIGHT ON CEILING AT WALL CENTERED ABOVE DOOR.



CONSTRUCTION NOTES:  
 1 CONTINUE TO LIGHT BELOW.  
 2 CONTINUE TO S3 BELOW.  
 3 SEE MECHANICAL ENGINEER'S DRAWING FOR EXACT LOCATION.  
 4 WALL MOUNT TYPE □ ABOVE MIRROR.  
 5 REAR/ CORRECT LOCATION OF TYPE □ WALL MOUNTED LIGHTS WITH REARHITCH.  
 6 CONTINUE TO BEDROOM RECEPTACLE.  
 7 MOUNT CLOSET LIGHT ON CEILING AT WALL CENTERED ABOVE DOOR.  
 8 CONTINUE TO S3 ABOVE.

PROGRESS SET ONLY  
 FOR REVIEW BY AUTHORITIES  
 HAVING JURISDICTION

CHABAD LUBAYTCH OF  
 MAINE, INC.  
 101 CRAIGIE STREET  
 PORTLAND, ME 04102

SECOND FLOOR LIGHTING AND FIRE ALARM PLAN

|                  |                        |
|------------------|------------------------|
|                  |                        |
| DESIGNED BY: RFS | FILENAME: CHA-LIGHTING |
| DRAWN BY: BMC    | REVISION: DATE:        |
| DATE: 6-28-07    | SCALE: 1/4" = 1'-0"    |
|                  |                        |

THIS DOCUMENT IS THE PROPERTY OF ELECTRICAL DESIGN CONSULTANTS, INC. IT IS TO BE USED ONLY FOR THE PROJECT AND SITE SPECIFICALLY IDENTIFIED HEREIN. IT IS NOT TO BE REPRODUCED, COPIED, OR TRANSMITTED IN ANY FORM OR BY ANY MEANS, ELECTRONIC OR MECHANICAL, INCLUDING PHOTOCOPYING, RECORDING, OR BY ANY INFORMATION STORAGE AND RETRIEVAL SYSTEM, WITHOUT THE WRITTEN PERMISSION OF ELECTRICAL DESIGN CONSULTANTS, INC.