

N/F
Thomas R. & Melody M. Lussier
Bk. 13795, Pg. 93

N/F
Roger J. & Donna I. Gendron
Bk. 4033, Pg. 128

N/F
Jean E. Gilpatrick
Bk. 17712, Pg. 248

N/F
Kriston Briggs
Bk. 20448, Pg. 336

Remaining Land Of
Stuart B. Herrick, Jr.
Bk. 6258, Pg. 53
Bk. 7509, Pg. 291

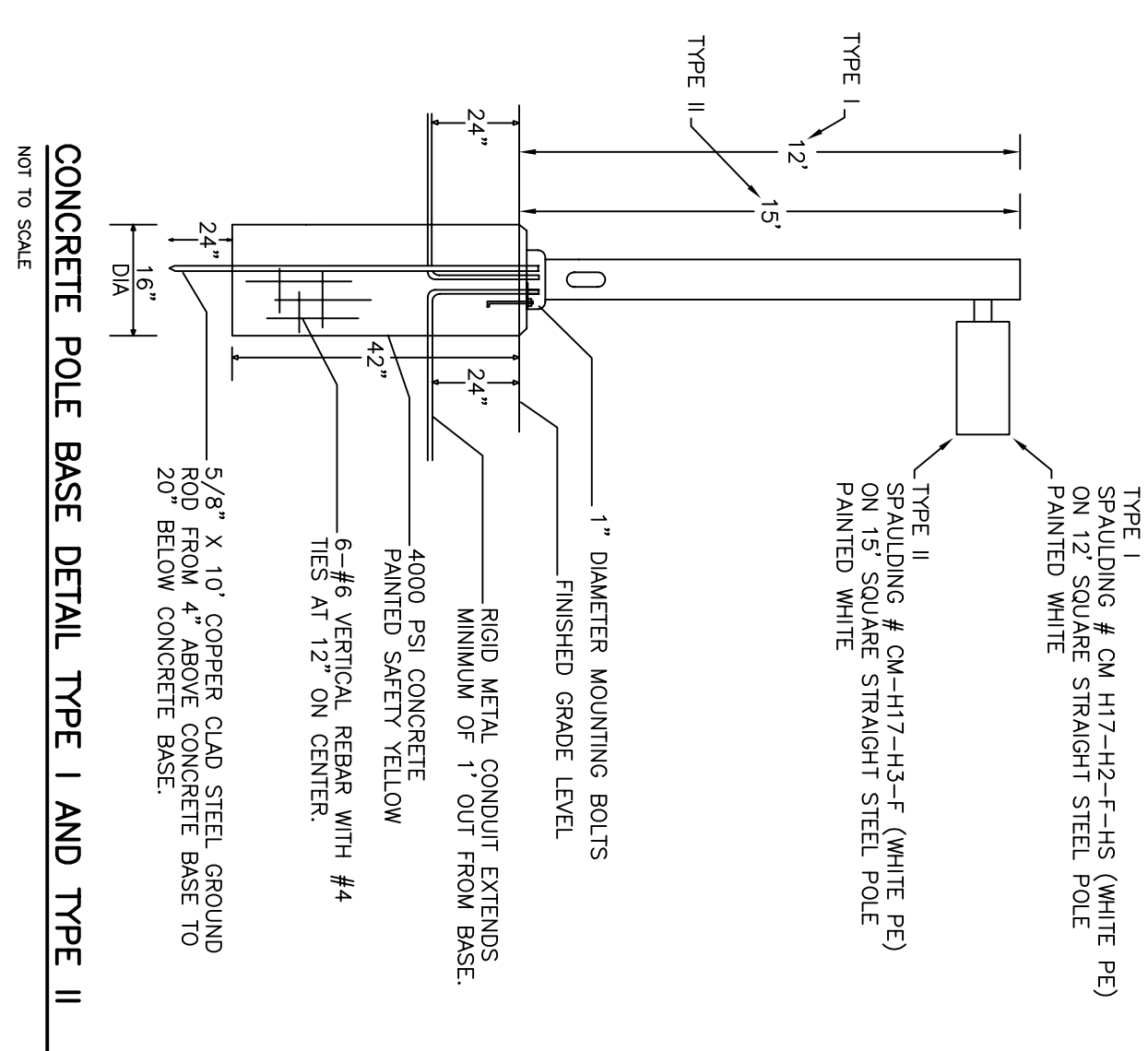
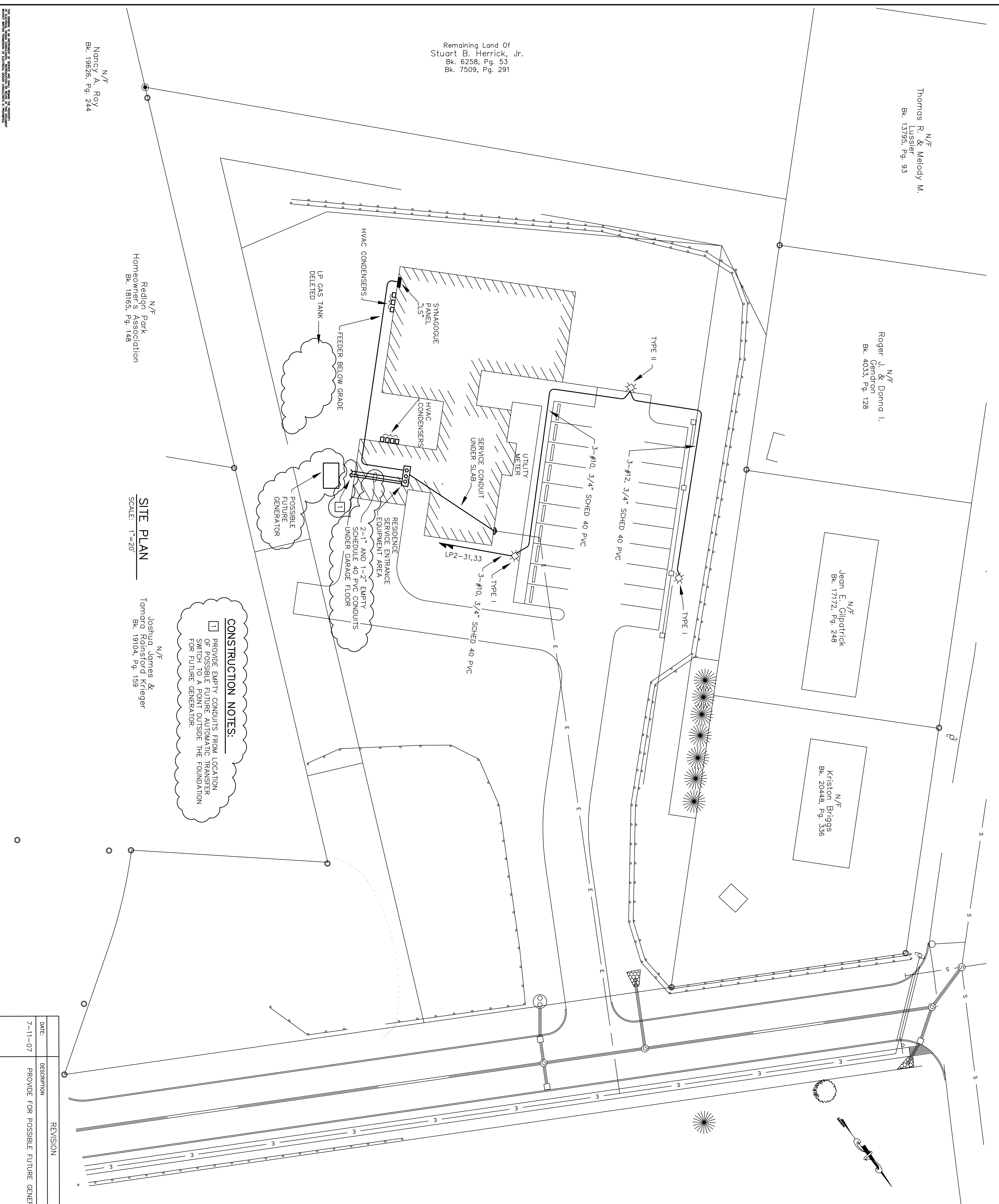
N/F
Nancy A. Roy
Bk. 19626, Pg. 244

N/F
Redion Park
Homeowner's Association
Bk. 18165, Pg. 148

SITE PLAN
SCALE: 1"=20'

N/F
Joshua, James & Tamara Robinson & Krueger
Bk. 19104, Pg. 159

CONSTRUCTION NOTES:
1 PROVIDE EMPTY CONDUITS FROM LOCATION OF POSSIBLE FUTURE AUTOMATIC TRANSFER SWITCH TO A POINT OUTSIDE THE FOUNDATION FOR FUTURE GENERATOR.



DATE	DESCRIPTION	REVISION
7-11-07	PROVIDE FOR POSSIBLE FUTURE GENERATOR	

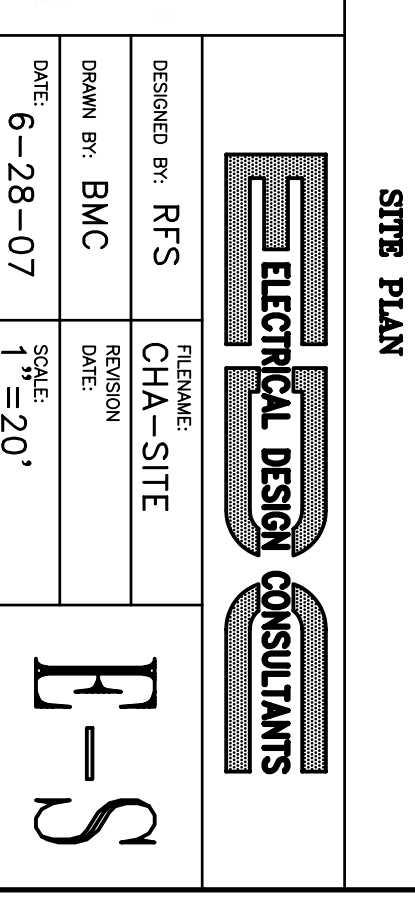
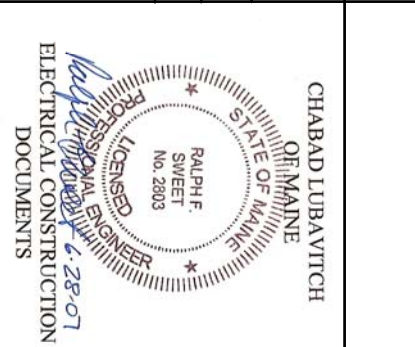
CHABAD LIBAYTCH OF MAINE, INC.
101 CRAIGIE STREET
PORTLAND, ME 04102

SITE PLAN

DESIGNED BY: RFS
DRAWN BY: BMC
DATE: 6-28-07

FILENAME: CHA-SITE
REVISION:
DATE:

SCALE: 1"=20'



PROGRESS SET ONLY
FOR REVIEW BY AUTHORITIES
HAVING JURISDICTION