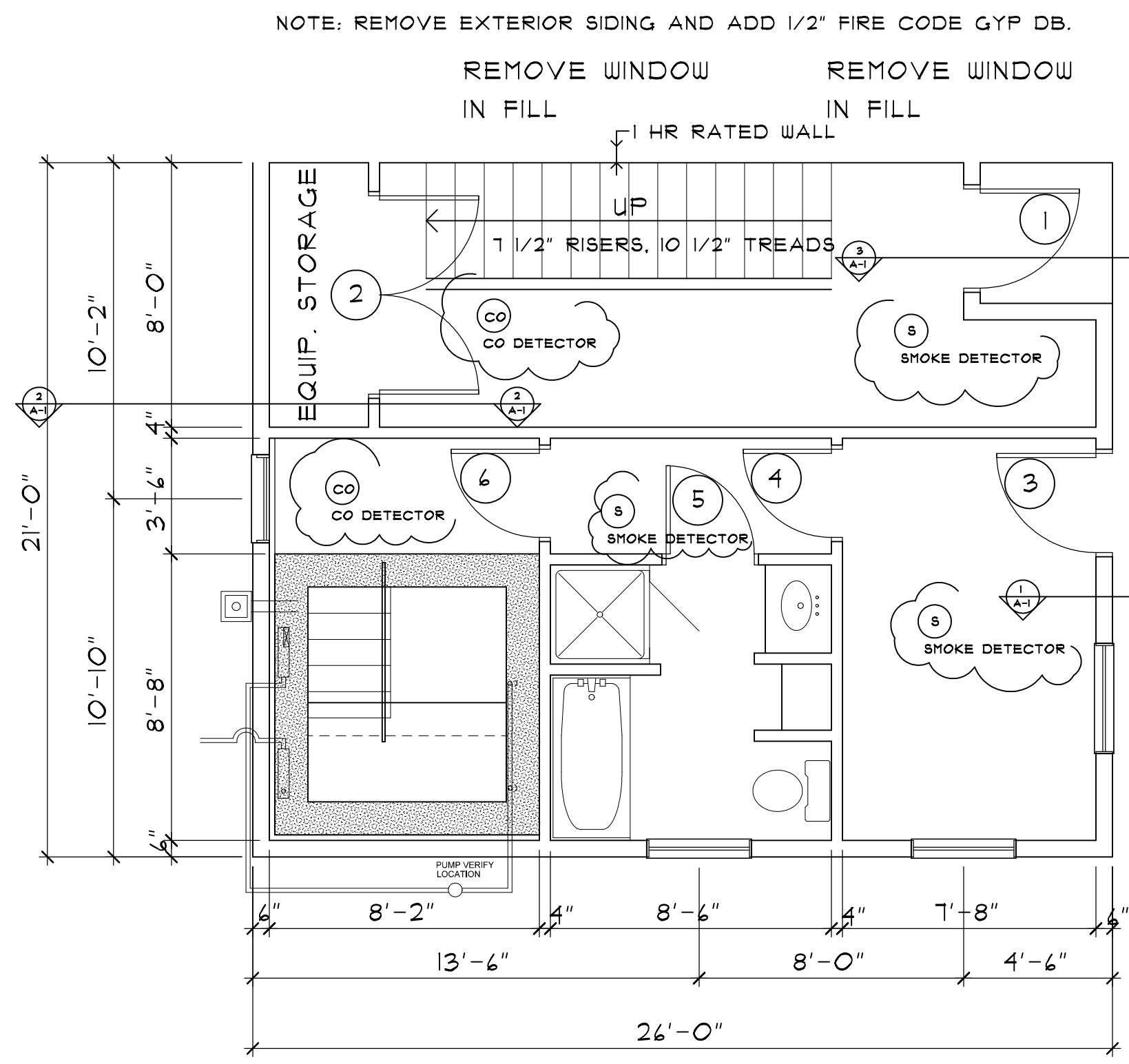


SECOND FLOOR PLAN

SCALE: 1/4" = 1'-0"

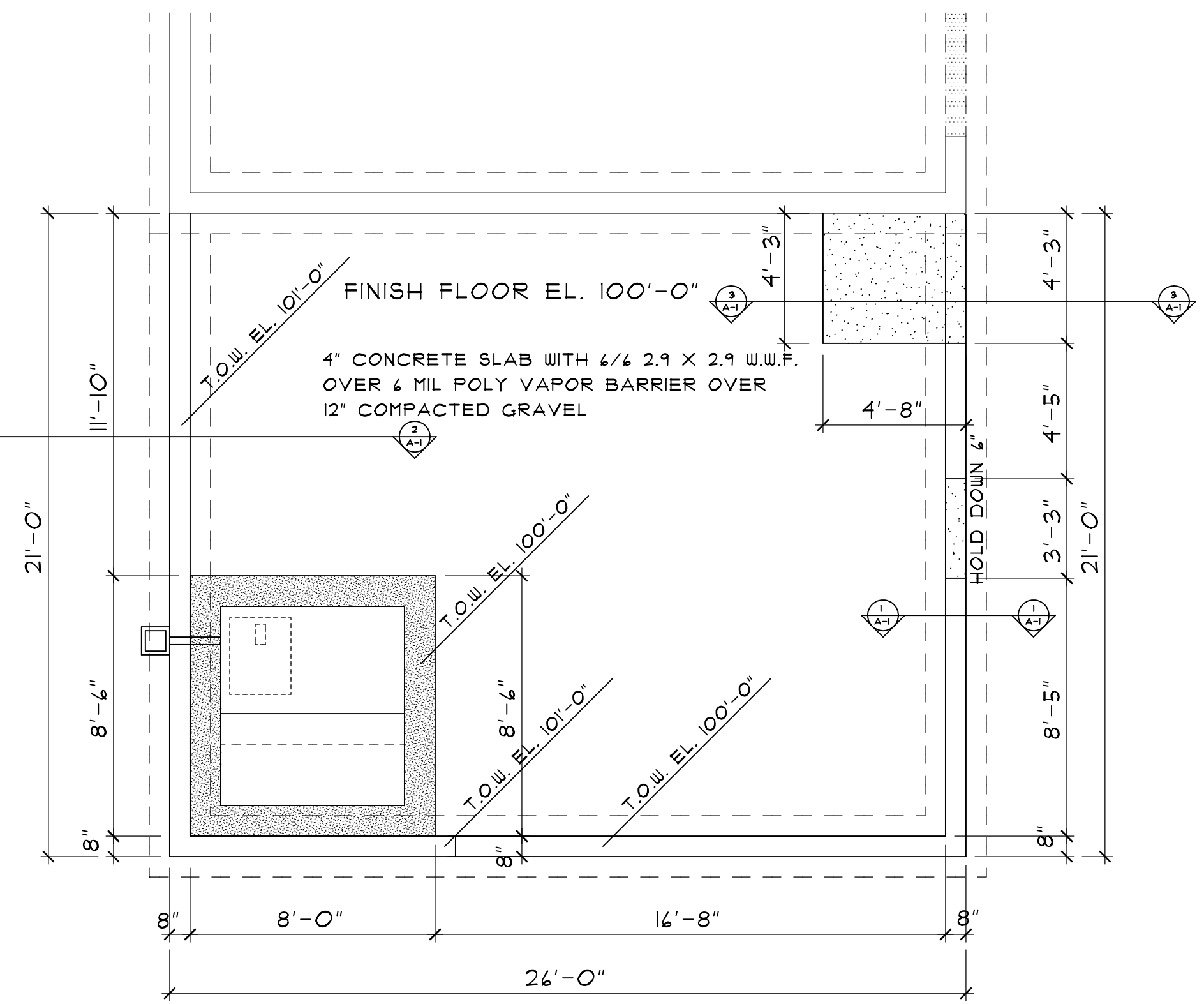


FIRST FLOOR PLAN

SCALE: 1/4" = 1'-0"

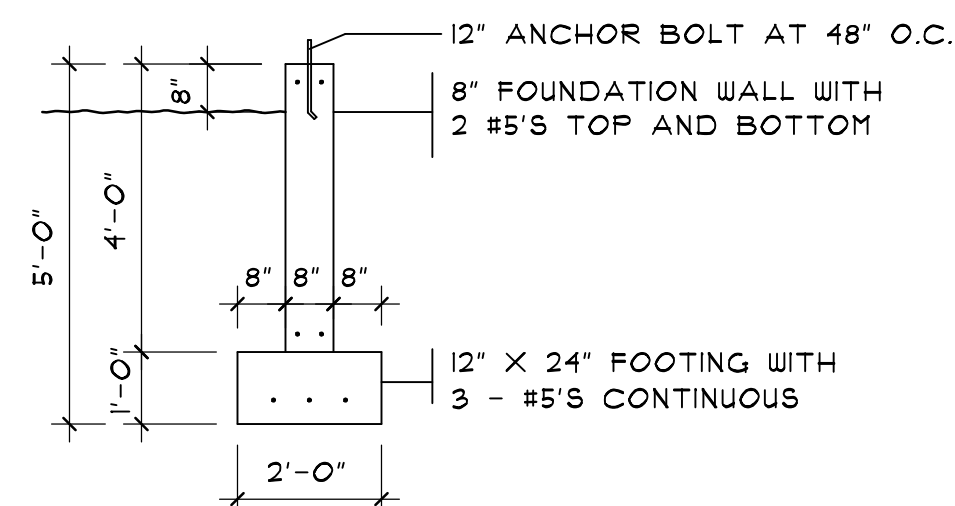
NOTES:

1. THE HEADERS FOR THE WINDOWS TO BE 3 - 2X8'S WITH TWO JACK STUDS EACH SIDE.
2. THE DOOR HEADER WILL BE 3 - 2X10'S WITH TWO JACK STUDS EACH SIDE.



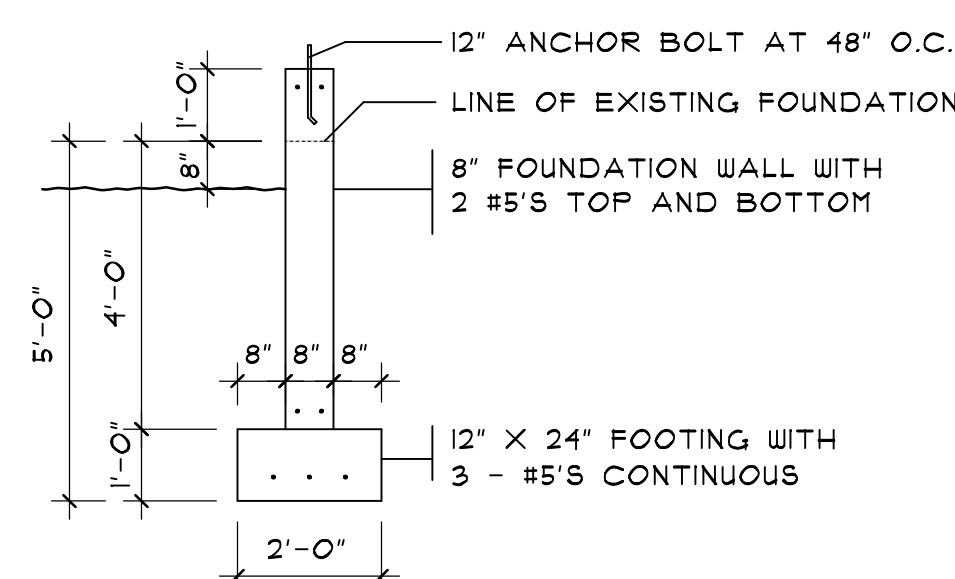
FOUNDATION PLAN

SCALE: 1/4" = 1'-0"



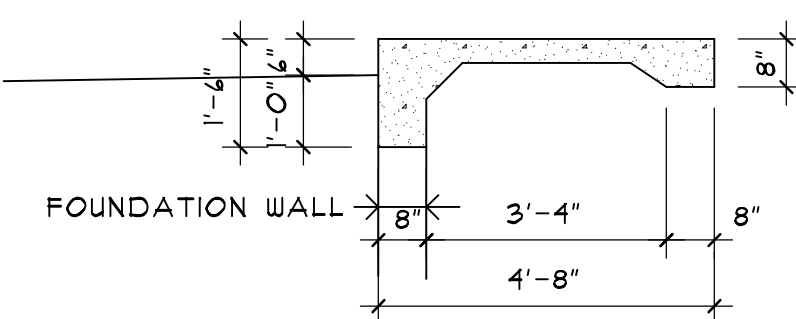
FOUNDATION DETAIL

SCALE: 3/8" = 1'-0"



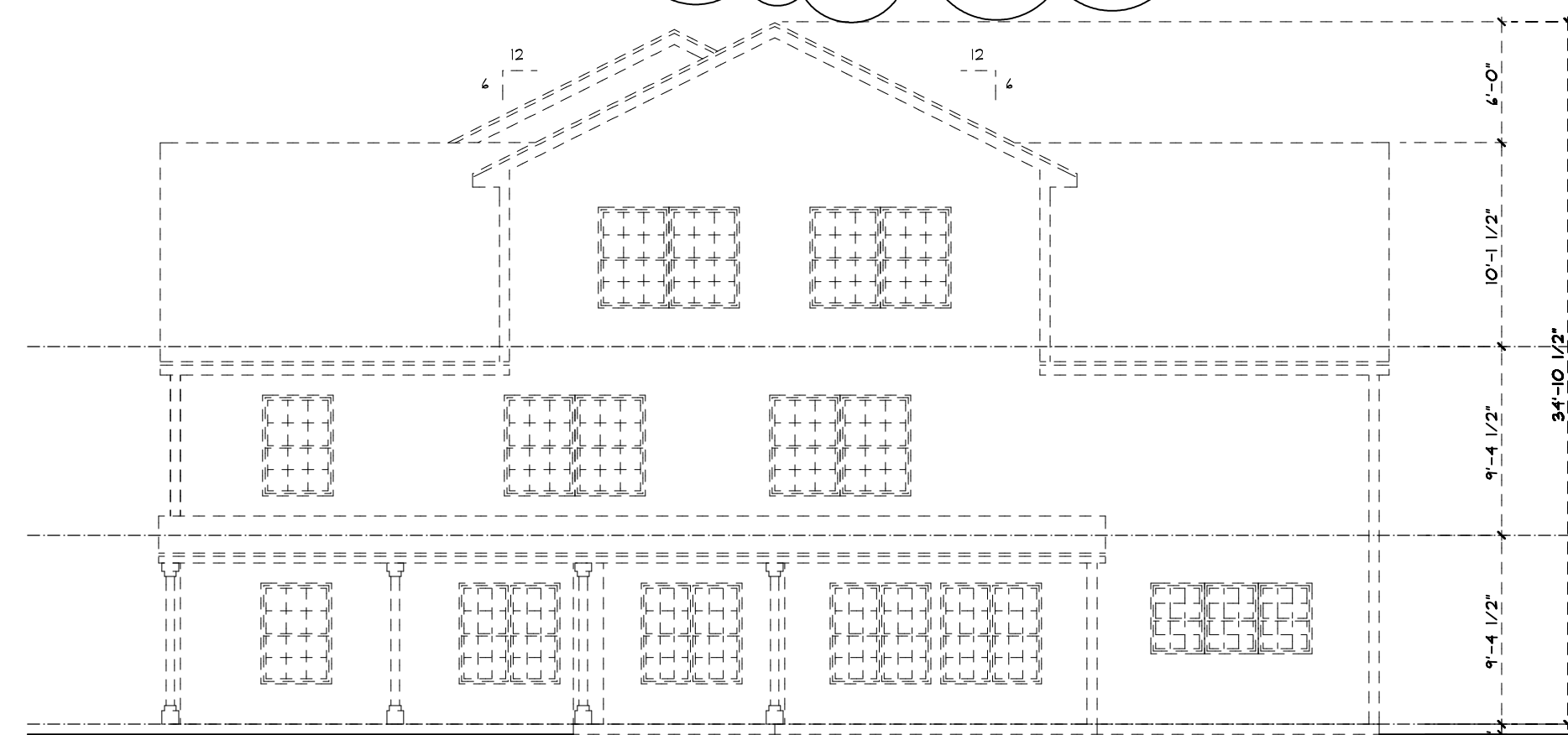
FOUNDATION DETAIL AT MIKVAH

SCALE: 3/8" = 1'-0"



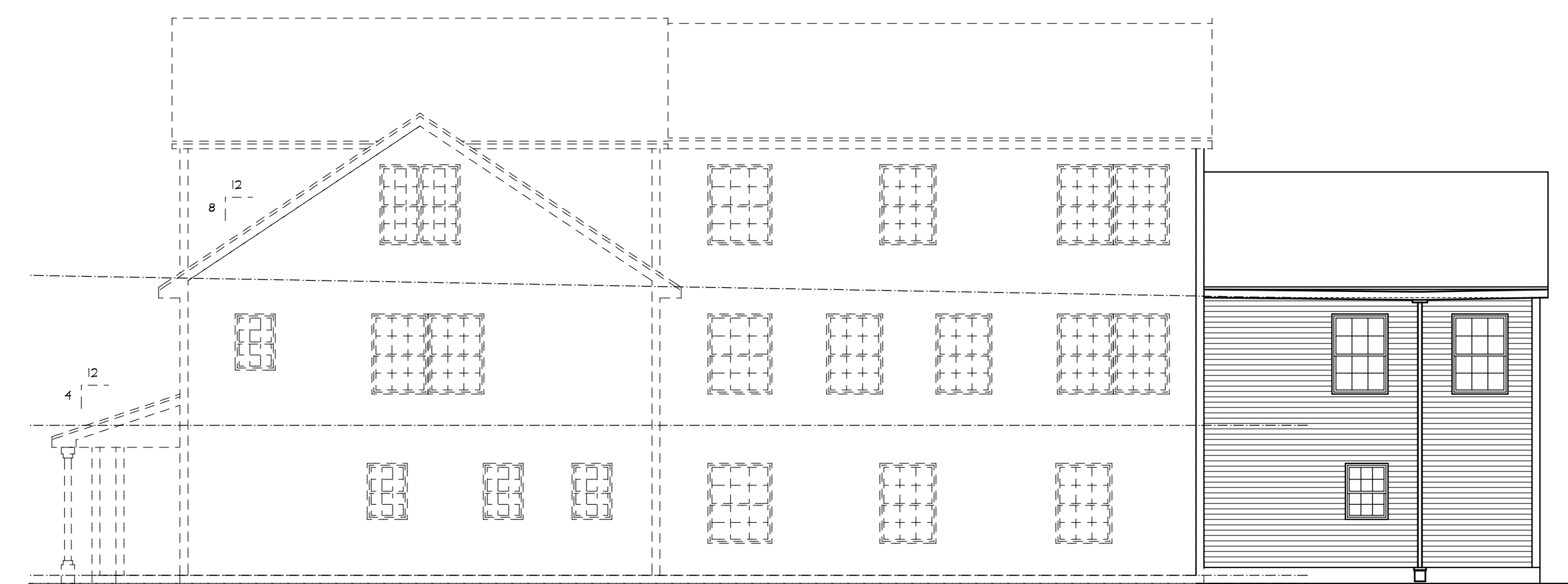
FOUNDATION DETAIL AT ENTRY

SCALE: 3/8" = 1'-0"



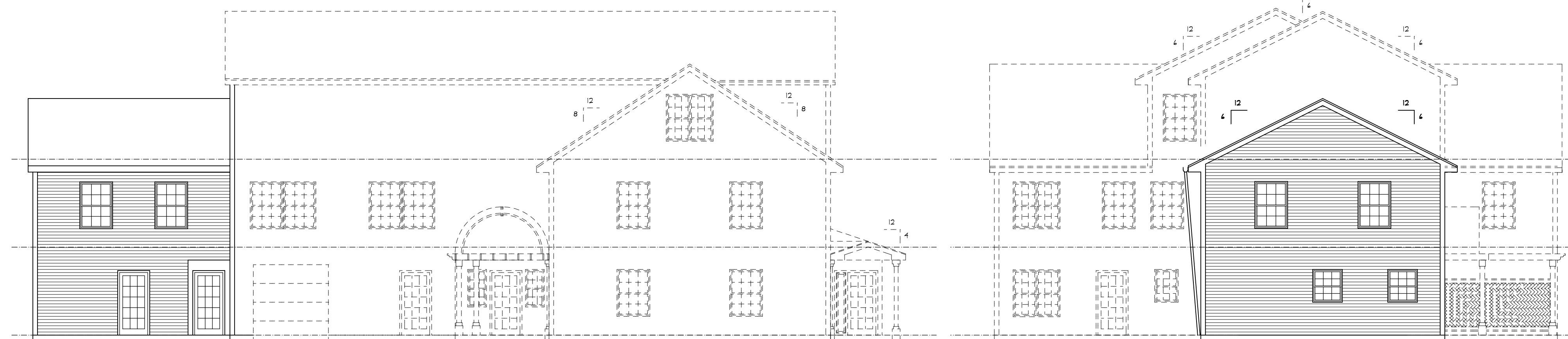
FRONT ELEVATION

SCALE: 1/8" = 1'-0"



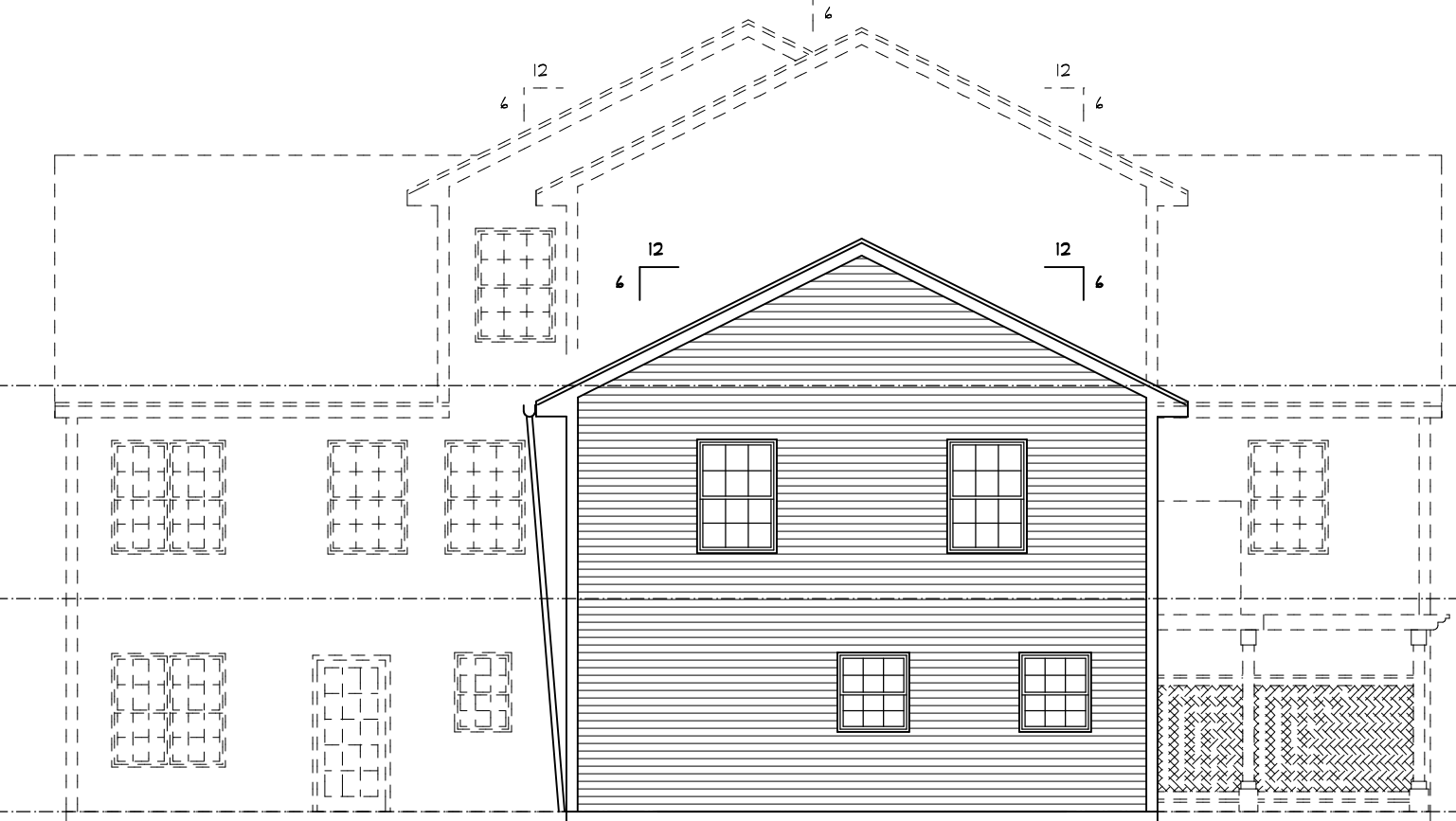
RIGHT SIDE ELEVATION

SCALE: 1/8" = 1'-0"



LEFT SIDE ELEVATION

SCALE: 1/8" = 1'-0"



REAR ELEVATION

SCALE: 1/8" = 1'-0"

NO.	DESCRIPTION OF REVISION	DATE
1	REVISED PER CODE	04/20/17

NEW RESIDENCE

11 POMEROY STREET
PORTLAND, MAINE

Gleason Architects

P.O. BOX 596
STRATHAM, NEW HAMPSHIRE 03885
603 772-7370

ARCHITECT

ENGINEER

DATE: 02/15/17

PROJECT NO. 201618

SHEET NO.

A-1

OF SHEETS