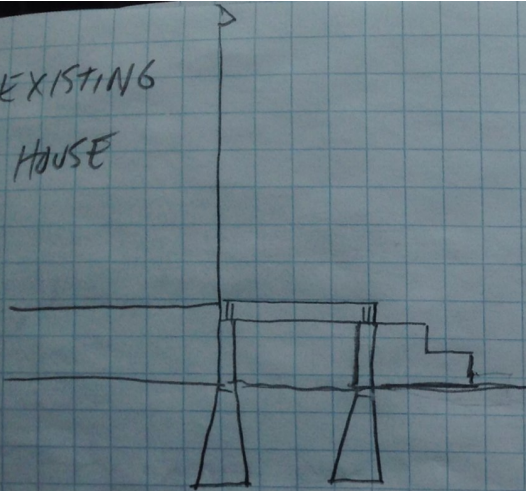


EXISTING
HOUSE



FREE STANDING FRONT STEPS 24" OFF GROUND

4' X 5' LANDING

2X8 PT CONSTRUCTION 12" O.C.

DOUBLE 2X8 BEAM

6X6 POST W/ POST BASE 6X6'S NOTCHED TO ACCEPT 2X8 BEAM

4' CONCRETE PIERS (4) TOTAL 5' O.C.

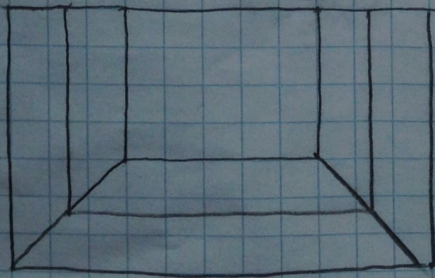
COMPOSITE DECKING

STAIRS 7³/₄" RISE 14¹/₂" RUN

6X6 POST LAG BOLTED TO BEAM 1/2" LAG GALV.

ALL FRAMING ATTACHED W/ JOIST HANGERS

TOP VIEW OF FRONT STEPS



SCALE 1/4" = 1'