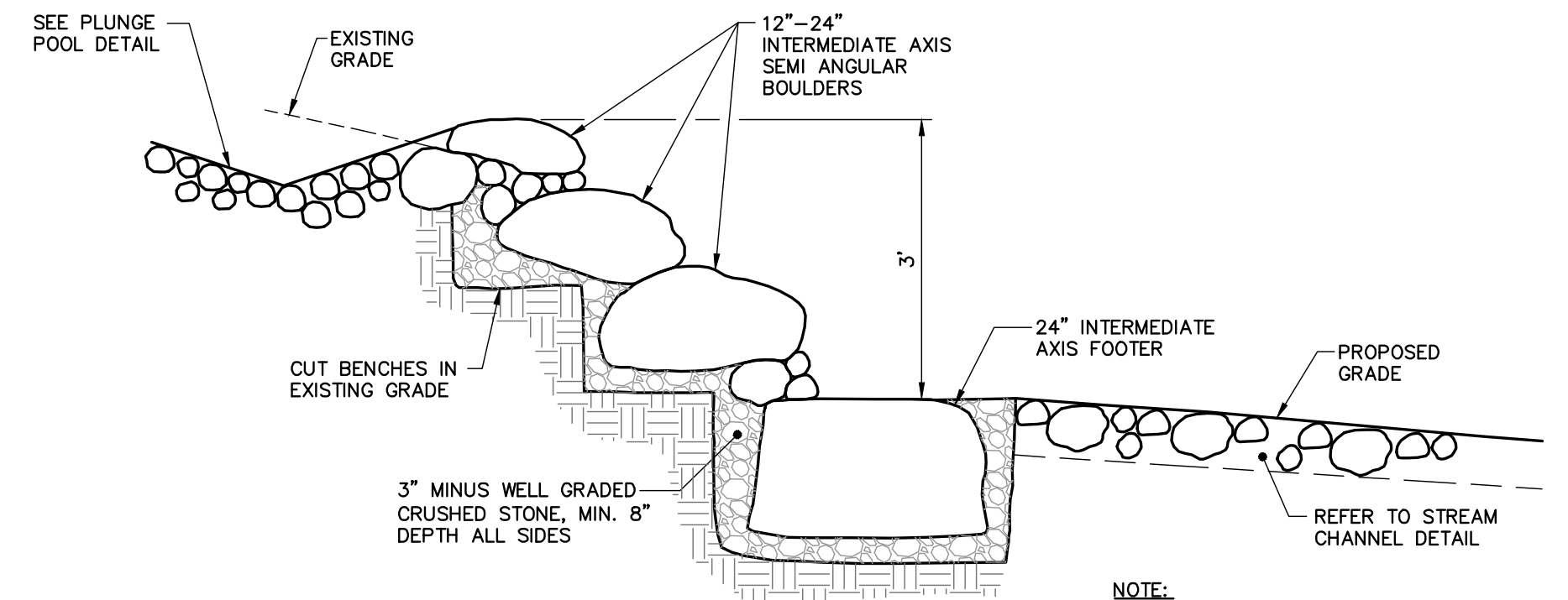


NOTES:

- INSTALL TEMPORARY EROSION CONTROL MATTING ON ALL SLOPES 2:1 OR GREATER OUTSIDE OF CHANNEL.

ROCKLAND AVE. OUTFALL PLUNGE POOL DETAIL*

*CROSS SECTION DETAIL ACROSS CHANNEL;
APPLICABLE STA. 1+65 TO 2+20
N.T.S.

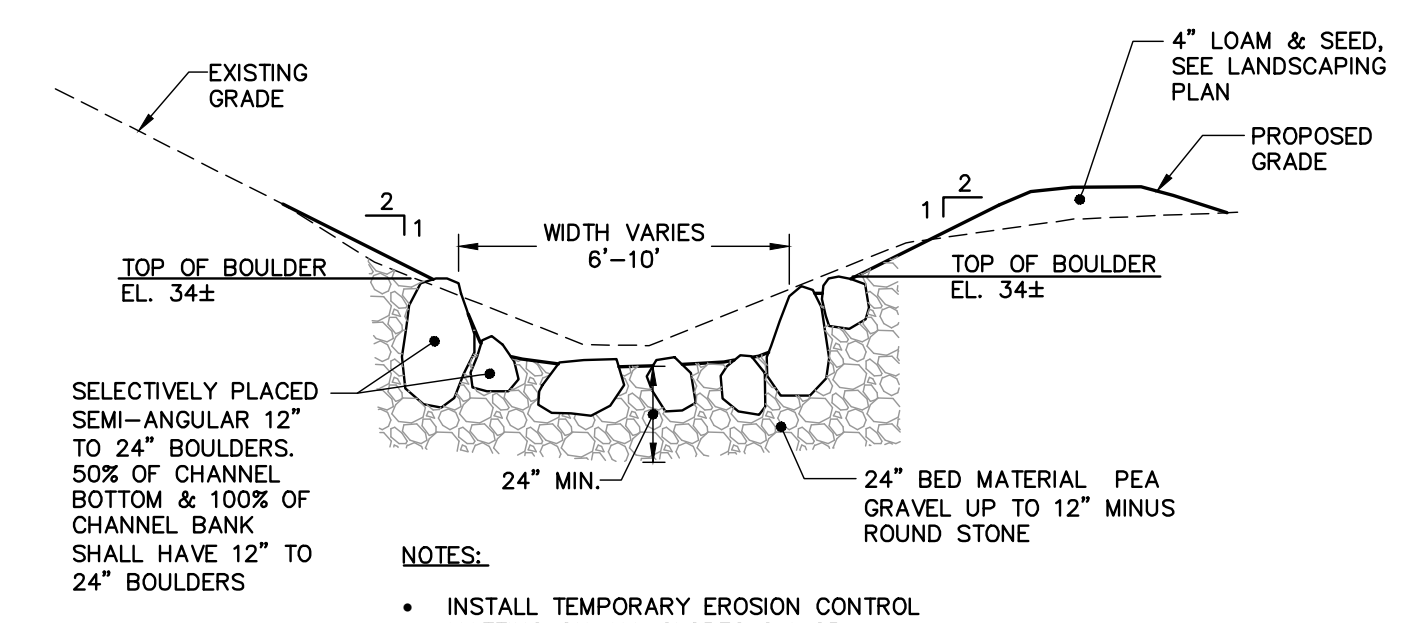


NOTE:

- INSTALL TEMPORARY EROSION CONTROL MATTING ON ALL SLOPES 2:1 OR GREATER OUTSIDE OF CHANNEL.
- INSTALL 12"-24" SEMI-ANGULAR BOULDERS OVER 8" OF 3" MINUS WELL GRADED CRUSHED STONE ON CHANNEL BANKS TO EL. 36 AT CASCADE.

ROCKLAND AVE. OUTFALL CASCADE DETAIL*

*CROSS SECTION DETAIL PATH OF CHANNEL;
APPLICABLE STA. 1+50 TO 1+65
N.T.S.

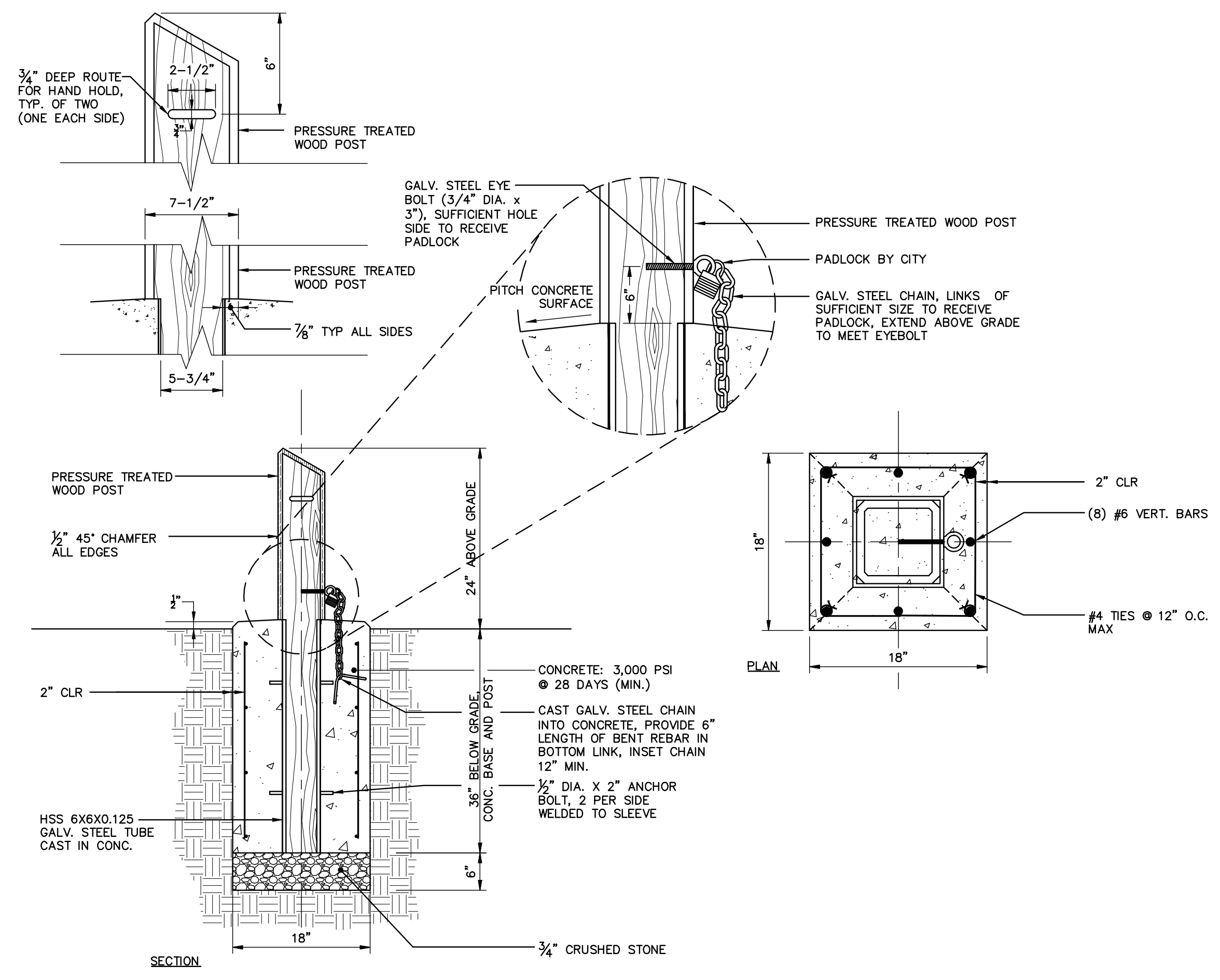


NOTES:

- INSTALL TEMPORARY EROSION CONTROL MATTING ON ALL SLOPES 2:1 OR GREATER OUTSIDE OF CHANNEL.

ROCKLAND AVE. OUTFALL STREAM CHANNEL DETAIL*

*CROSS SECTION DETAIL ACROSS CHANNEL;
APPLICABLE STA. 0+85 TO 1+50
N.T.S.



REMOVABLE WOOD BOLLARD

N.T.S.

41 HUTCHINS DRIVE
PORTLAND, MAINE 04102
800.426.4262 | www.woodardcurran.com

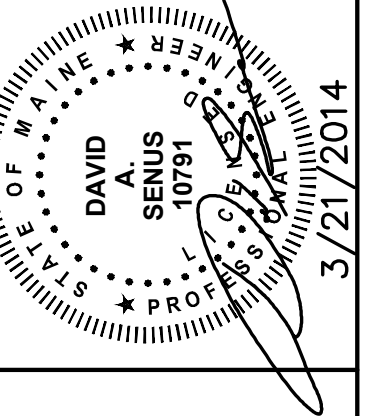


COMMITMENT & INTEGRITY DRIVE RESULTS

LDD PROJECT NAME:
N/A
DRAWING NAME:
225672.77 C20X 24X36.DWG
FIELD BOOK USED:
N/A

REFERENCES:

DESIGNED BY: BCM/JLS
DRAWN BY: BCM
CHECKED BY: DAS
SCALE: AS NOTED
DATE: MARCH 2014



ROCKLAND AVENUE OUTFALL
SITE DETAILS - 3

CITY OF PORTLAND, MAINE
PUBLIC SERVICES DEPARTMENT
ENGINEERING SECTION



SHEET #
7 OF 7
PLAN NUMBER
C-302

Z:\225672_portland-gen_eng_svec\wp_77_copsaic_pord.ph_in\Drawings\Design Drawings\225672.77 C20X 24x36.dwg, Mar 26, 2014 - 4:37pm