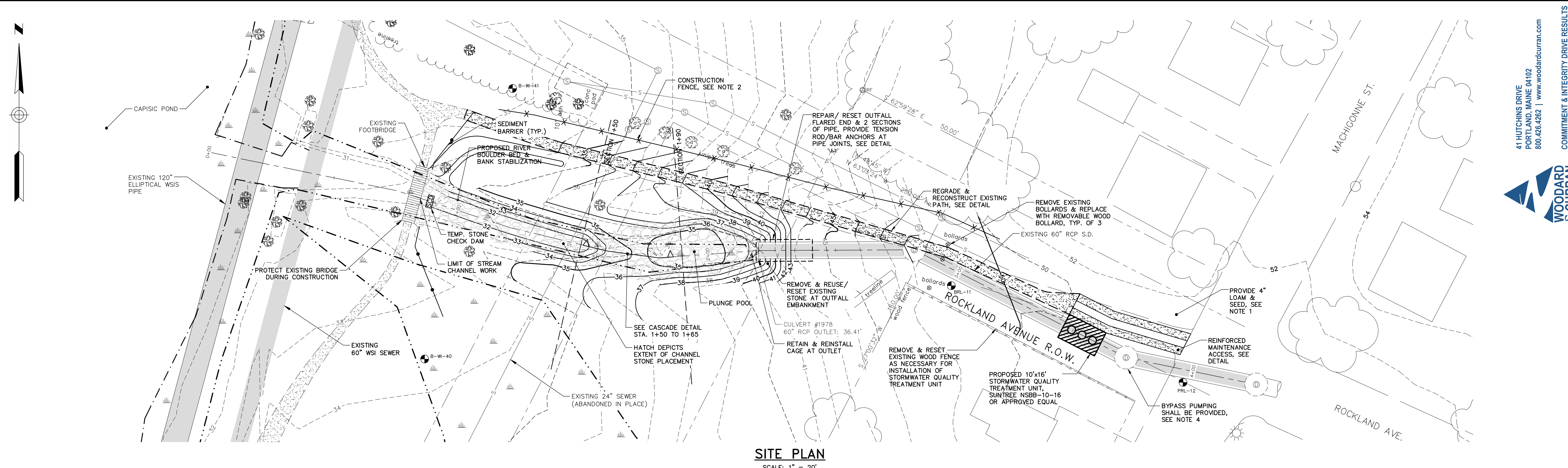


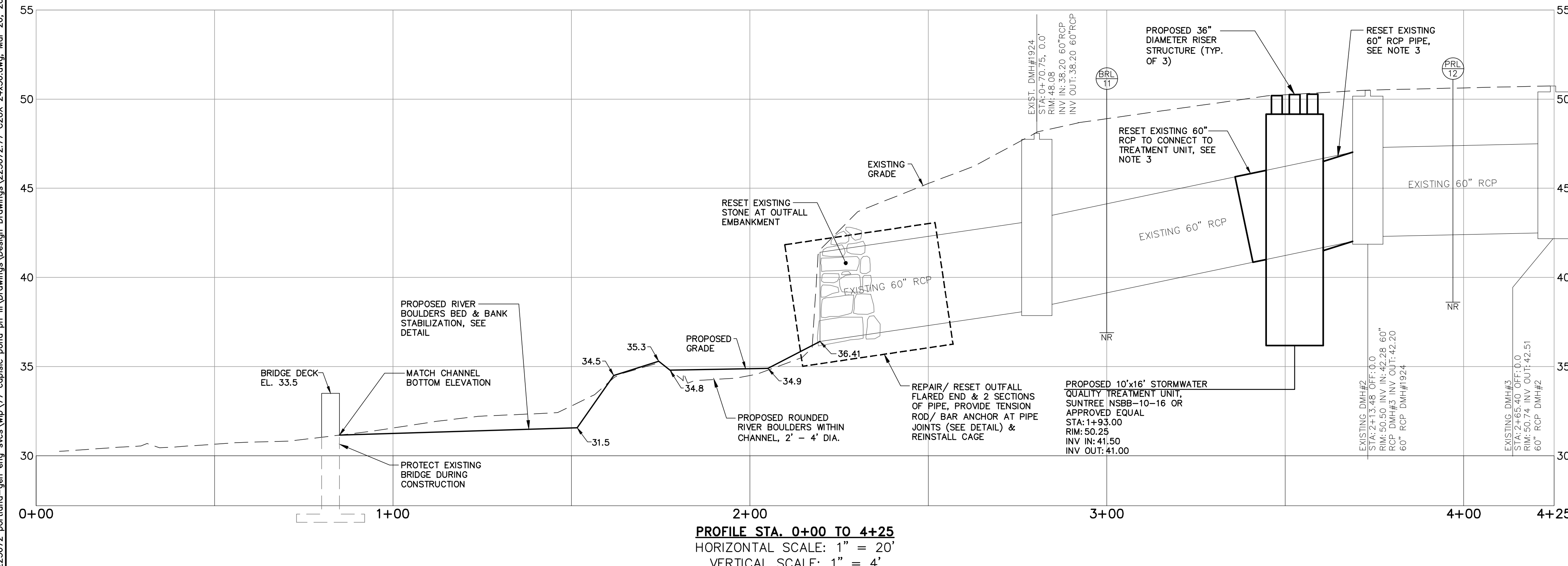
Z:\225672\portland-gen_eng_scs\wp_77_capisc_pond.plt\Drawings\Design Drawings\225672.77_C20X_24x36.dwg, Mar 26, 2014 - 4:36pm



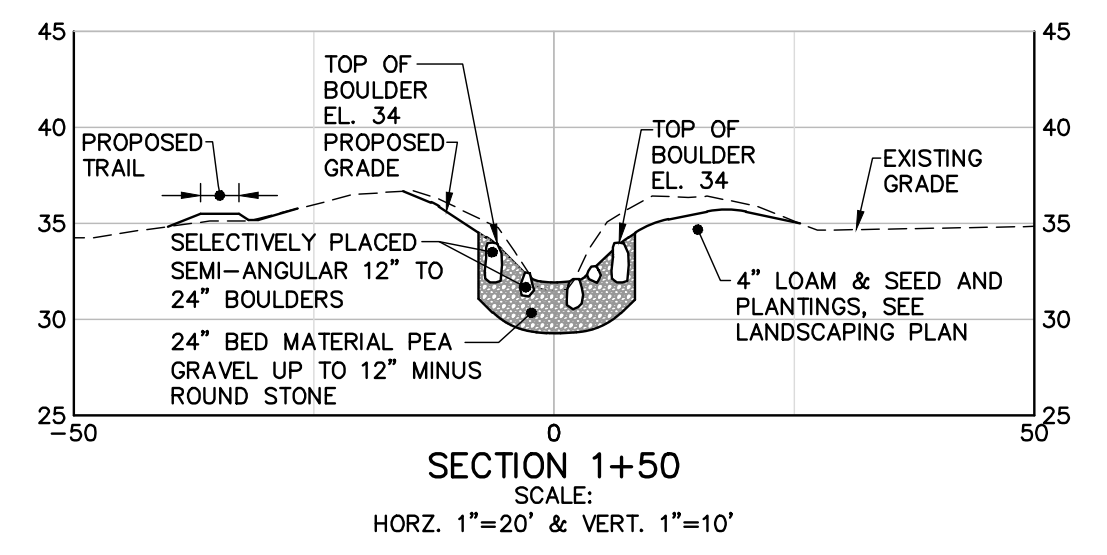
SITE PLAN
SCALE: 1" = 20'

NOTES:

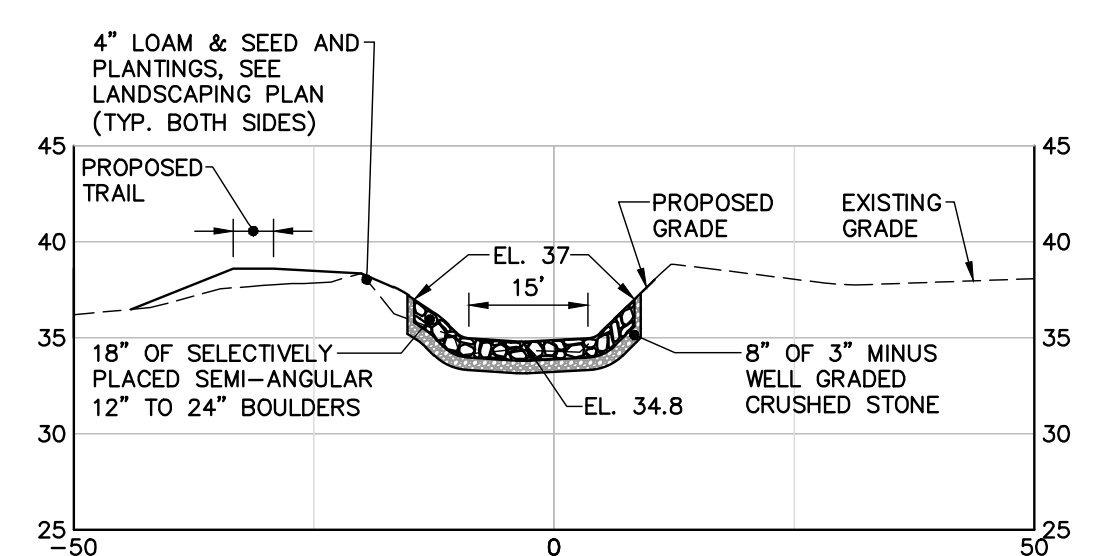
1. THE ENTRANCE TO THE ROCKLAND AVENUE OUTFALL AREA AT THE INTERSECTION OF ROCKLAND AVENUE AND MACHIGONNE STREET SHALL BE REVEGETATED WITH 4" LOAM AND SEED, EXCEPT IN AREAS IDENTIFIED FOR GRAVEL SURFACE PER THE DETAIL FOR REINFORCED MAINTENANCE ACCESS AND TRAIL. THE CITY SHALL PROVIDE ADDITIONAL PLANTING IN THE VICINITY OF THE MAINTENANCE ACCESS WAY, AS DETERMINED BY THE CITY ARBORIST, AFTER THE STORMWATER TREATMENT UNIT AND MAINTENANCE ACCESS WAY ARE COMPLETE.
2. THE CONTRACTOR MAY MODIFY THE LOCATION OF THE CONSTRUCTION FENCE, AND MAY MOVE THE FENCE DURING CONSTRUCTION TO PROVIDE FOR A SAFE CONSTRUCTION SITE. THE CONSTRUCTION SITE CONTAINS AN ACTIVE PEDESTRIAN TRAIL THAT MAY BE CLOSED DURING CONSTRUCTION AS NECESSARY. THE CONTRACTOR SHALL COORDINATE WITH THE CITY ON THE TIMING OF TRAIL CLOSURE SO THAT ADEQUATE NOTICE TO THE PUBLIC. CONSTRUCTION FENCE LOCATION AND TRAIL CLOSURE SHALL BE INCLUDED IN THE CONTRACTOR'S CONSTRUCTION MANAGEMENT PLAN.
3. CONTRACTOR MAY UTILIZE HDPE PIPE (N-12 SANITITE HP, BY ADS, OR EQUAL) TO CONNECT STORMWATER QUALITY UNIT TO EXISTING RCP PIPE. CONNECTION BETWEEN RCP AND HDPE PIPE MUST BE MAR-MAC POLYSEAL PIPE COUPLER, OR EQUAL.
4. CONTRACTOR SHALL BYPASS PUMP BASE FLOW FROM EXISTING DMH #3, UPSTREAM OF PROJECT TO CAPISC POND. A PUMPED DISCHARGE SEDIMENT CONTROL DEVICE SHALL BE UTILIZED (SEE DETAIL) AND MAY BE MOVED TO ACCOMMODATE CONSTRUCTION. WORK SHALL BE STOPPED DURING STORM EVENTS.



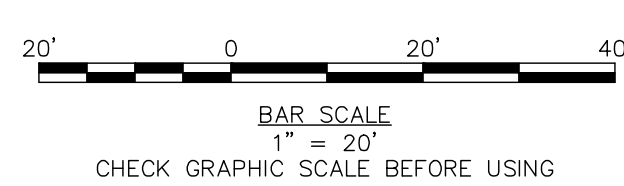
PROFILE STA. 0+00 TO 4+25
HORIZONTAL SCALE: 1" = 20'
VERTICAL SCALE: 1" = 4'



SECTION 1+50
SCALE: 1" = 20' HORIZ. & 1" = 10' VERT.



SECTION 1+90
SCALE: 1" = 20' HORIZ. & 1" = 10' VERT.



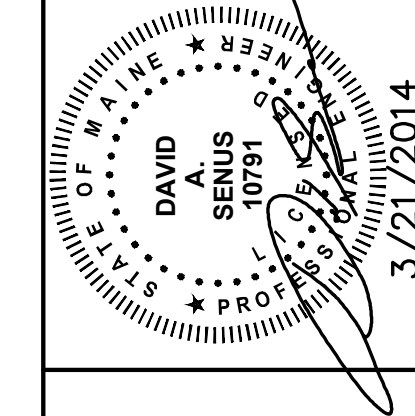
41 HUTCHINS DRIVE
PORTLAND, MAINE 04102
800.426.4262 | www.woodardcurran.com



LDD PROJECT NAME:
N/A
DRAWING NAME:
225672.77_C20X_24x36.DWG
FIELD BOOK USED:
N/A

REFERENCES:
DrawingSL_2012.dwg

DESIGNED BY:	BCM/JLS
DRAWN BY:	BCM
CHECKED BY:	DAS
SCALE:	AS NOTED
DATE:	MARCH 2014



ROCKLAND AVENUE OUTFALL
SITE PLAN & PROFILE,
SECTIONS

CITY OF PORTLAND, MAINE
PUBLIC SERVICES DEPARTMENT
ENGINEERING SECTION



SHEET #
3 OF 7
PLAN NUMBER
C-201

PERMITTING SET - NOT FOR CONSTRUCTION