

GENERAL NOTES:

- SITE AND TOPOGRAPHIC DATA COMPILED FROM NUMEROUS SOURCES INCLUDING A BASE PLAN PREPARED BY KAPPA MAPPING, INC., 6 STATE STREET, SUITE 301 BANGOR, MAINE 04401 UTILIZING AERIAL PHOTOGRAPHY FLOWN ON 4/16/2012. BASE PLAN DATA COMPILED FOR THE WEST SIDE INTERCEPTOR SEWER REPLACEMENT PROJECT (APRIL 19, 2010 BY WOODARD & CURRAN INC.) AND "BOUNDARY SURVEY OF CAPISIC POND PARK AT ROCKLAND AVENUE" BY GAILLE ALDEN, CITY OF PORTLAND, MAINE, PUBLIC SERVICES DEPARTMENT ENGINEERING DIVISION, DATED 3/16/2014. BORING INFORMATION AND SEWER AND DRAINAGE LOCATIONS AT ROCKLAND AND MACHICOUINE INTERSECTION TAKEN FROM ROCKLAND AVENUE SEWER SEPARATION PROJECT PLANS (AUGUST 2000, BY DELUCA-HOFFMAN)
- MAPPING CONTROL SYSTEMS PROJECTION: MAINE WEST ZONE SPCS HORIZONTAL DATUM, NAD83, VERTICAL DATUM: NAVD83, UNITS: US FEET
- ADJACENT PROPERTY AND STREET RIGHT OF WAY LINES ARE CITY OF PORTLAND TAX MAP G.I.S. DATA (APPROXIMATE).
- CAPISIC PARK PROPERTY LINE DERIVED FROM "PLAN OF CITY PROPERTY AT CAPISIC POND", BY J.M. ROBBINS, P.D.P.W. #473
- THE UTILITY LOCATIONS SHOWN IN PLAN AND PROFILE ARE APPROXIMATE AND REQUIRE FIELD VERIFICATION BY THE CONTRACTOR. CONTACT THE CITY IMMEDIATELY UPON DISCOVERING ANY CONFLICTS WITH EXISTING AND PROPOSED UTILITY LOCATIONS. NOT ALL EXISTING UTILITIES ARE SHOWN ON PLANS.
- COORDINATE CONSTRUCTION ACTIVITY WITH UTILITY COMPANIES, EMERGENCY SERVICES AND CITY. CONTACTS ARE LISTED IN SPECIFICATIONS. NOTIFY UTILITY COMPANIES WITHIN 48 HOURS OF WORK ACTIVITY ADJACENT TO THOSE UTILITIES.
- CONTRACTOR SHALL NOTIFY ALL UTILITIES PRIOR TO COMMENCING WORK, ALLOWING SUFFICIENT TIME TO LOCATE AND MARK THE LOCATION OF BURIED UTILITIES. CONTRACTOR SHALL CONTACT "DIG SAFE", TELEPHONE 811, PRIOR TO EXCAVATION.
- RESTORE ALL AREAS DISTURBED BY CONTRACTOR'S OPERATIONS TO ORIGINAL FINISH (GRAVEL, PAVEMENT, GRASS, ETC.). RESTORATION OF PAVED SURFACES, GRAVEL SURFACES, DRIVEWAYS, AND LAWNS DAMAGED BY CONSTRUCTION ACTIVITIES OUTSIDE OF LIMITS OF WORK INDICATED ON THE PLANS SHALL BE PERFORMED AT NO ADDITIONAL COST TO OWNER. ANY CURB DAMAGED BY CONSTRUCTION ACTIVITIES SHALL BE REPLACED IN KIND AND SHALL CONFORM TO CITY OF PORTLAND AND MAINE DOT SPECIFICATIONS AT NO ADDITIONAL COST TO OWNER.
- PROPERLY PROTECT AND DO NOT DISTURB PROPERTY IRONS AND MONUMENTS. IF DISTURBED, THE PROPERTY MONUMENT SHALL BE RESET AT THE CONTRACTOR'S EXPENSE BY A LICENSED LAND SURVEYOR ACCEPTABLE TO THE CITY.
- EXISTING FACILITIES (I.E. POLES, LIGHT POSTS, SIGNS, ETC.) SHALL BE REMOVED AND PROTECTED DURING CONSTRUCTION AND RESET IN KIND UPON COMPLETION OF WORK. CITY RETAINS RIGHT TO KEEP ANY AND ALL REMOVED FACILITIES. CONTRACTOR SHALL DISPOSE OF ANY REMOVED FACILITY AT THE REQUEST OF CITY AT CONTRACTOR'S EXPENSE.
- ALL TREES NOT NOTED TO BE REMOVED OR RELOCATED SHALL BE PROTECTED BY CONTRACTOR DURING CONSTRUCTION.
- ALL WORK WITHIN THE RIGHT OF WAY OF CITY STREETS SHALL BE PERFORMED IN ACCORDANCE WITH THE REQUIREMENTS OF THE CITY TRAFFIC ENGINEER. THE CONTRACTOR SHALL SUBMIT A PROPOSED TRAFFIC CONTROL PLAN TO THE TRAFFIC ENGINEER AT LEAST 7 DAYS BEFORE BEGINNING CONSTRUCTION IN ANY STREET. THE PROPOSED TRAFFIC CONTROL PLAN SHALL BE SUBJECT TO APPROVAL BY THE TRAFFIC ENGINEER, WHO MAY ATTACH SPECIAL CONDITIONS TO, OR REQUIRE MODIFICATIONS OF, THE TRAFFIC CONTROL PLAN. WORK SHALL NOT BEGIN UNTIL THE PLAN IS APPROVED BY THE TRAFFIC ENGINEER.
- DO NOT PARK, IMPEDE ACCESS TO, OR STORE EQUIPMENT ON ADJACENT CITY OR PRIVATELY OWNED LOTS, UNLESS PERMISSION HAS BEEN GRANTED IN WRITING BY CITY AND/OR LAND OWNER.
- COORDINATE DISRUPTION OF PRIVATE UTILITY SERVICES WITH LANDOWNERS AT LEAST TWO DAYS (48 HOURS) PRIOR TO DISRUPTION. ALL UTILITY COORDINATION IS RESPONSIBILITY OF CONTRACTOR.
- RESTRICT ACCESS TO SITE THROUGH THE USE OF APPROPRIATE SIGNAGE, BARRIERS, FENCES, ETC. SITE SHALL BE LEFT WITH APPROPRIATE SAFETY MEASURES IN PLACE DURING NON-WORKING HOURS. NO TRENCH SHALL BE LEFT OPEN DURING NON-WORKING HOURS. SITE SAFETY IS THE RESPONSIBILITY OF CONTRACTOR, DURING BOTH WORKING AND NON-WORKING HOURS.
- CONTRACTOR IS RESPONSIBLE FOR OBTAINING ALL NECESSARY CONSTRUCTION PERMITS. PERMIT APPLICATION SHALL BE SUBMITTED WITH ADEQUATE TIME SO AS NOT TO DELAY CONSTRUCTION.
- THE CONTRACTOR SHALL OBTAIN A CITY STREET OPENING PERMIT FOR ALL WORK IN THE CITY RIGHT OF WAY BEFORE BEGINNING CONSTRUCTION. THE FEE FOR THIS PERMIT WILL BE WAIVED BY THE CITY. THE CONTRACTOR WILL ALSO BE REQUIRED

ABBREVIATIONS

&	AND
A.G.	ABOVE GROUND
BIT	BITUMINOUS
B/W	BETWEEN
CB	CATCH BASIN
CI	CAST IRON
CMP	CENTRAL MAINE POWER
CMP	CORRUGATED METAL PIPE
CONC	CONCRETE
DI	DUCTILE IRON
DIA.	DIAMETER
DMH	DRAIN MANHOLE
DTL	DETAIL
E	UNDERGROUND ELECTRICAL
ELEV	ELEVATION
E.O.P.	EDGE OF PAVEMENT
EXIST.	EXISTING
FF	FINISH FLOOR
FT	FOOT/FEET
G	GAS MAIN
GS	GAS SERVICE
GALV.	GALVANIZED
GRAN.	GRANITE
HDPE	HIGH DENSITY POLYETHYLENE
HDPP	HIGH DENSITY POLYPROPYLENE
HYD	HYDRANT
INV.	INVERT
LF	LINEAR FEET
MAX.	MAXIMUM
MDOT	MAINE DEPARTMENT OF TRANSPORTATION
MIN.	MINIMUM
MON	MONUMENT
N.I.C.	NOT IN CONTRACT
NO.	NUMBER
NR	NO REFUSAL
N.T.S.	NOT TO SCALE
OE	OVERHEAD ELECTRICAL
OH	OVERHEAD
±	PLUS OR MINUS
LLS	LICENSED LAND SURVEYOR
PROP.	PROPOSED
PT.	POINT
PVC	POLYVINYL CHLORIDE
PWD	PORTLAND WATER DISTRICT
R.O.W.	RIGHT-OF-WAY
RCF	REINFORCED CONCRETE PIPE
REINF.	REINFORCED
REQ'D	REQUIRED
RFP	RIBBED PLASTIC PIPE
S	SLOPE (FT./FT.)
SD	SEWER
SD	STORM DRAIN
SMH	SEWER MANHOLE
SCH	SCHEDULE
STA.	STATION
TYP.	TYPICAL
UP	UTILITY POLE
VC	VITRIFIED CLAY
VIT.	VITRIFIED CLAY
W	WEST
W	WATER
W	WITH
WM	WATERMAIN
WS	WATER SERVICE
WV	WATER VALVE

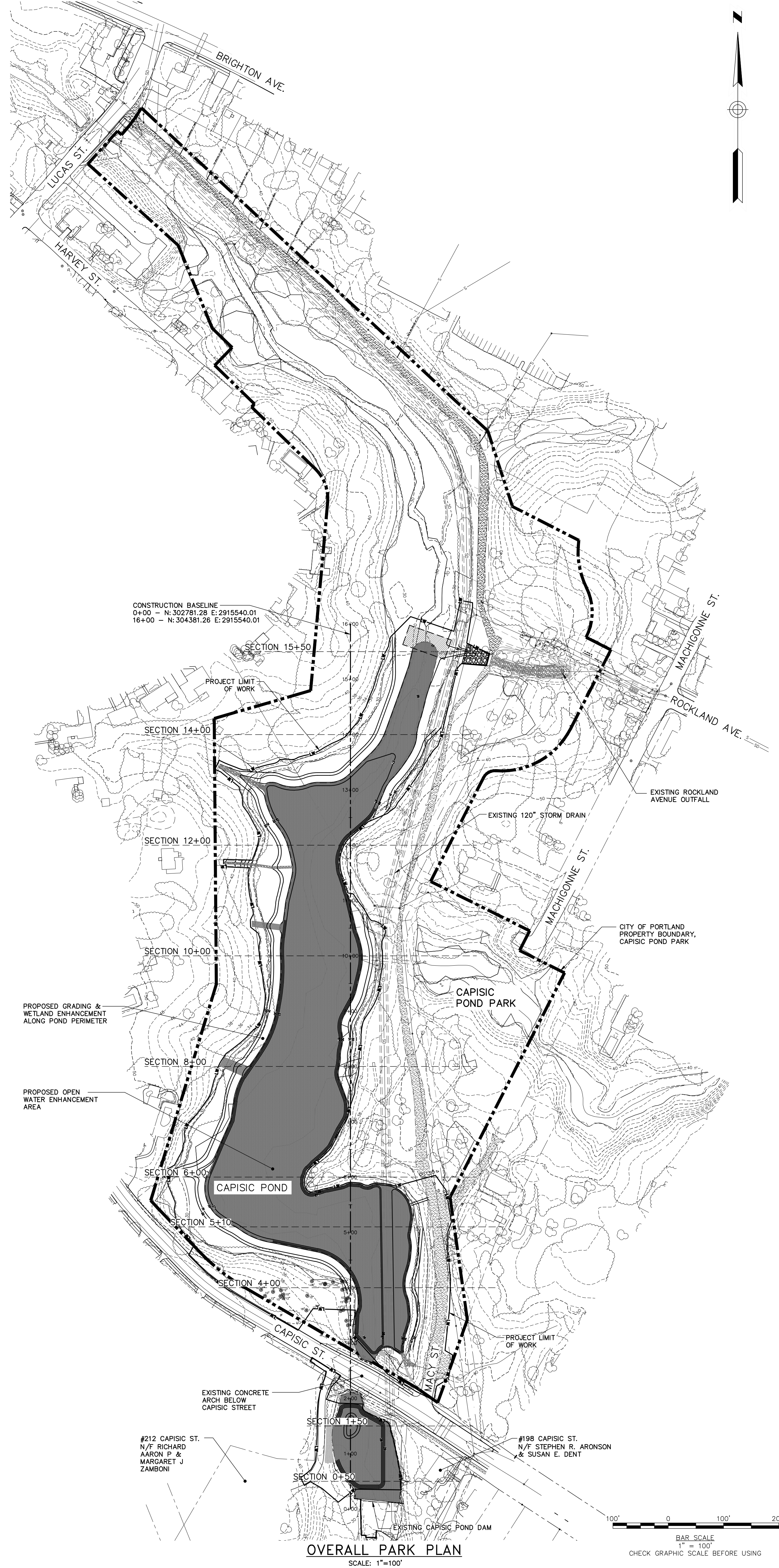
SYMBOLS

DESCRIPTION	EXISTING	PROPOSED
SANITARY SEWER MANHOLE		
STORM DRAIN MANHOLE		
CATCH BASIN W/ HEADSTONE		
CATCH BASIN, FIELD INLET		
DRAIN BASIN		
UTILITY POLE W/QUY		
UTILITY POLE		
WATER GATE		
WATER VALVE		
WATER SHUT OFF		
HYDRANT		
MAILBOX		
TREE		
IRON PIN (FOUND)		
MONUMENTS (FOUND)		
EXISTING GRAVEL		
EXISTING OPEN WATER		
PROPOSED OPEN WATER		
RIPRAP OR STONE ARMORING LINING		
STABILIZED CONSTRUCTION ENTRANCE / TEMPORARY ACCESS		

LINE TYPES

DESCRIPTION	EXISTING
CONTOUR (1" INTERVAL)	
CONTOUR (INDEX)	
SANITARY SEWER	
STORM DRAIN	
UNDERDRAN	
WATER MAIN	
UNDERGROUND ELECTRIC GAS LINE	
OVERHEAD ELECTRIC	
PROPERTY LINE	
PROJECT AREA	
RIGHT OF WAY	
EASEMENT	
EDGE OF VEGETATION	
FENCE	
CENTERLINE	
RETAINING WALL	
STONEWALL	
CURB	
EDGE OF PAVEMENT	
EDGE OF GRAVEL	

DESCRIPTION	PROPOSED
CONTOUR (1" INTERVAL)	
CONTOUR (INDEX)	
EDGE OF GRAVEL	
LIMIT OF WORK	



41 Hutchins Drive
Portland, Maine 04102
800.424.4242 | www.woodardcurran.com

WOODARD & CURRAN
COMMITMENT & INTEGRITY DRIVE RESULTS

REPRODUCTION OF THIS DRAWING WITHOUT WRITTEN PERMISSION IS PROHIBITED

DAVID A. SIBERT
REGISTERED PROFESSIONAL ENGINEER
NO. 10001

REV.	DESCRIPTION	DATE	CHECKED BY/DAS	DRAWN BY/SDA

CITY OF PORTLAND, MAINE

CAPISIC POND ENHANCEMENTS

JOB NO: 225672.77
DATE: JANUARY 8, 2016
SCALE: AS NOTED
SHEET: 1 OF 9

G-001

GENERAL NOTES, LEGEND & ABBREVIATIONS

OVERALL PARK PLAN
SCALE: 1"=100'

