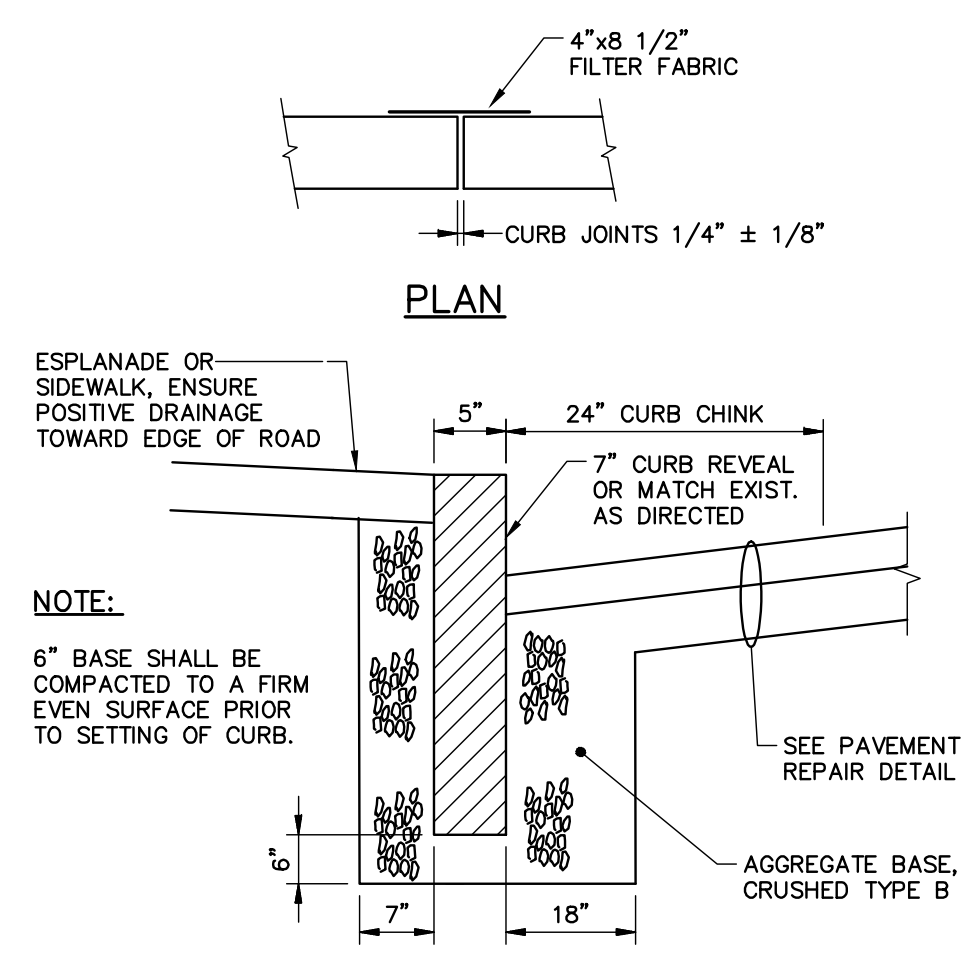


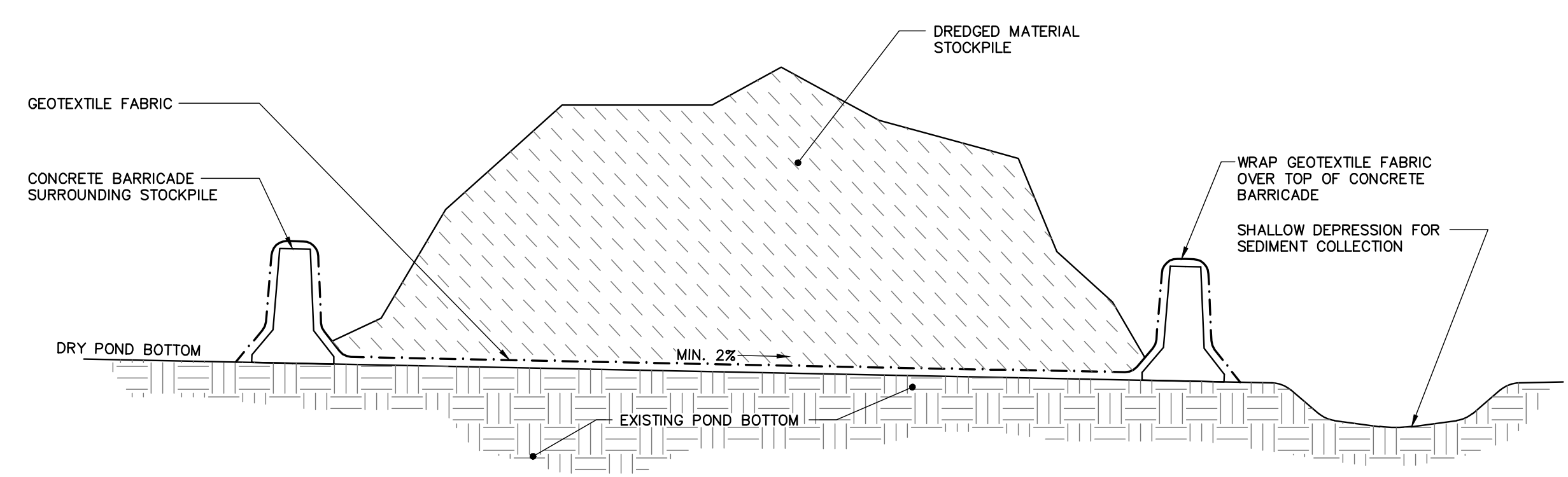
BITUMINOUS DRIVEWAY DETAIL
N.T.S.
NOTE: AGGREGATE TYPES PER MDT SECTION 304.02



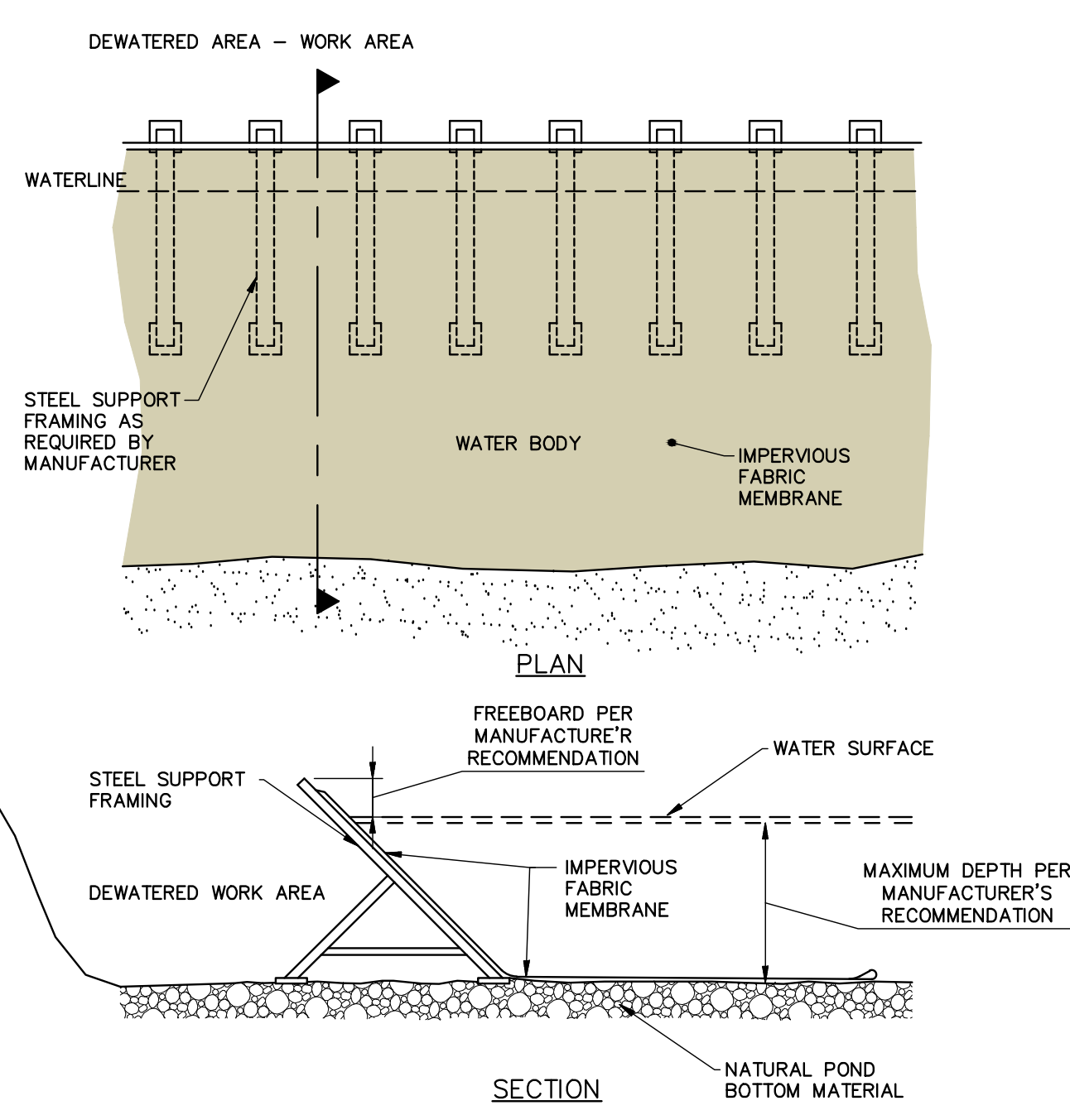
TYPICAL NEW AND RESET CURB INSTALLATION
N.T.S.
NOTE: AGGREGATE TYPES PER MDT SECTION 304.02

CURB TYPE 1 ON CURVES

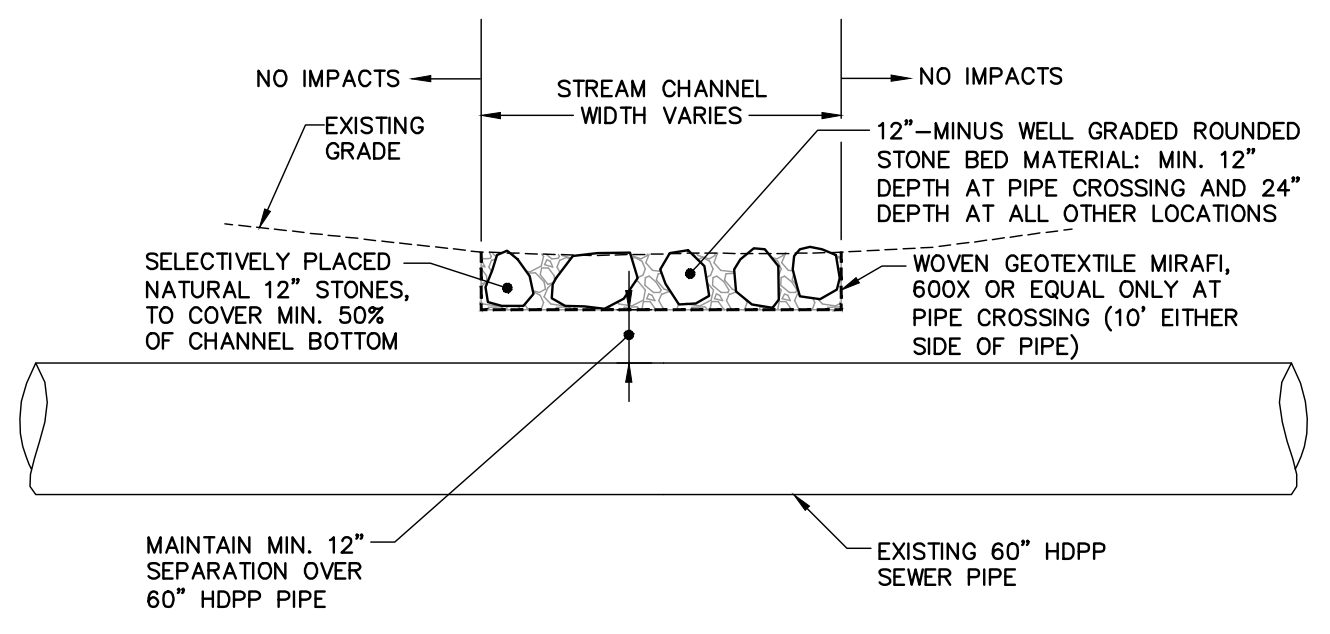
| TYPE | RADIUS OF CURVE | LENGTH | STONE IS CUT OR CAST |
|------|------------------|----------|----------------------|
| 1 | 0' TO 60' INCL. | 4' MIN. | ARC TO FIT CURVE |
| | OVER 60' TO 160' | 4' TO 6' | STRAIGHT PIECES |



TEMPORARY ON-SITE DREDGE DEWATERING AREA DETAIL
N.T.S.
NOTES:
1. DREDGE DEWATERING AREA SHALL BE LOCATED AS NOTED ON PLANS OR AS APPROVED BY ENGINEER. ALL COMPONENTS OF DEWATERING AREA SHALL BE CONTAINED WITHIN CAPSIC POND.
2. NO MECHANICAL DEWATERING SHALL BE ALLOWED ON SITE.
3. FOLLOWING REMOVAL OF ALL STOCKPILED DREDGED MATERIAL, GEOTEXTILE FABRIC SHALL BE REMOVED AND DISPOSED OF. AREA SHALL BE GRADED IN ACCORDANCE WITH PLANS.

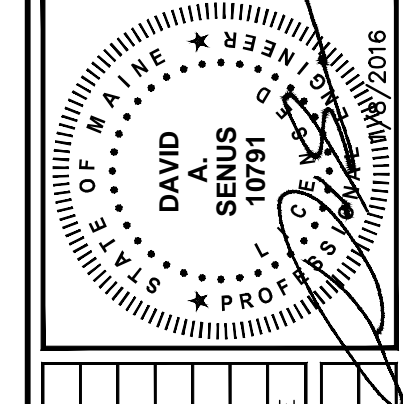


TEMPORARY FRAME & FABRIC COFFERDAM DETAIL
N.T.S.
NOTE: COFFERDAM DETAIL SHOWN FOR REFERENCE PURPOSES. CONTRACTOR SHALL PROVIDE DESIGN OF TEMPORARY COFFERDAMS, STAMPED BY A LICENSED PROFESSIONAL ENGINEER IN THE STATE OF MAINE.



ROCKLAND AVE. OUTFALL STREAM CHANNEL DETAIL
N.T.S.

41 Hutchins Drive
Portland, Maine 04102
800.428.4282 | www.woodardcurran.com
WOODARD & CURRAN
COMMITMENT & INTEGRITY DRIVE RESULTS
REPRODUCTION OF THIS DOCUMENT WITHOUT WRITTEN PERMISSION IS PROHIBITED



| REV | DESCRIPTION | DATE | DESIGNED BY | CHECKED BY | DRAWN BY |
|-----|-------------|------|-------------|------------|----------|
| | | | | | |

SITE DETAILS - 2

| | |
|-----------------------------------|--------------------------|
| CITY OF PORTLAND, PORTLAND, MAINE | CAPSIC POND ENHANCEMENTS |
| JOB NO: 225672.77 | |
| DATE: JANUARY 8, 2016 | |
| SCALE: AS NOTED | |
| SHEET: 7 OF 9 | |
| C-201 | |

V:\Users\jguyard\Projects\225672\Portland-Cap Pond\Drawings\Design\Drawings\225672.77_Capsic Pond.dwg, Job 05, 2016 - 10:53am