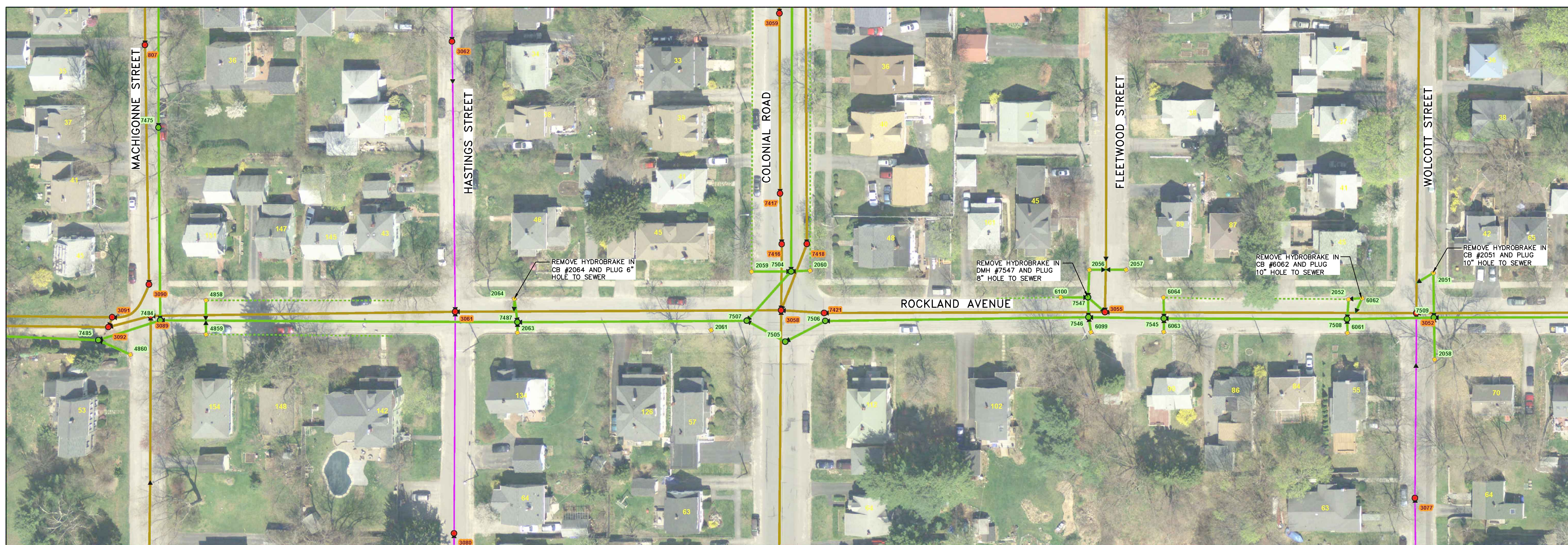
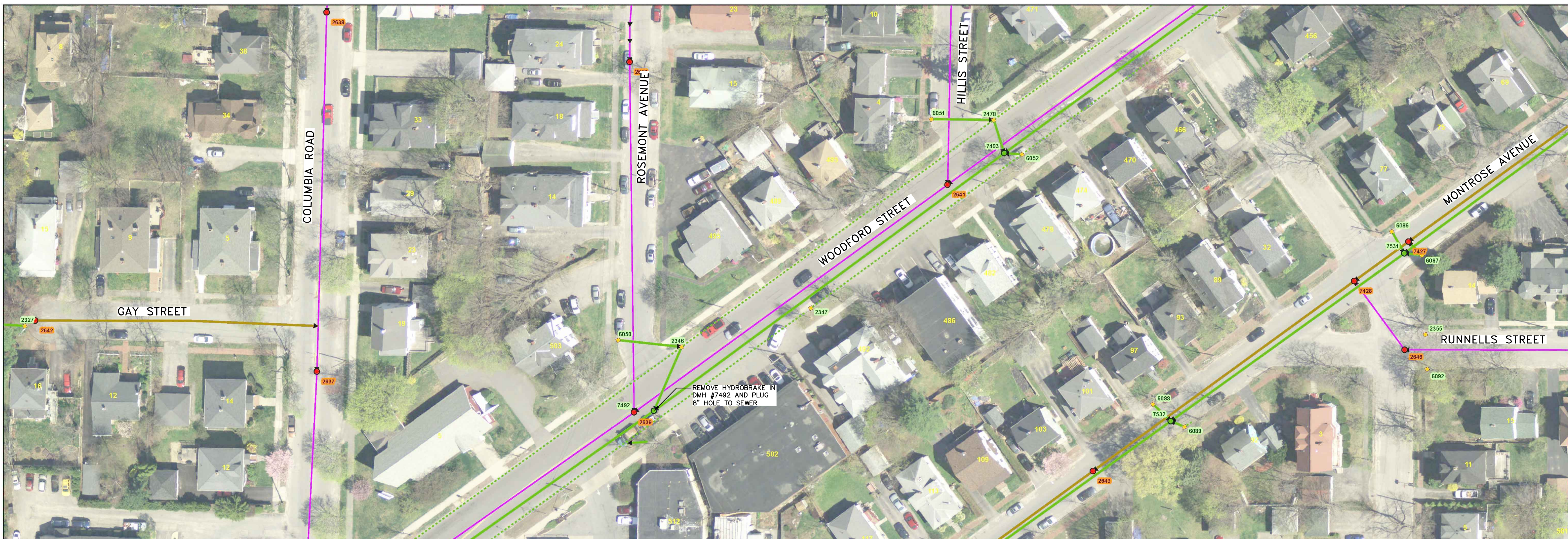


\\PORTLAND\Projects\225672 - Portland-Cen Eng Svcs\Wp\77 Capital Pond Ph II\Drawings\Design Drawings\225672.77 C20X 24x36.dwg, Jul 09, 2014 - 3:15pm



41 HUTCHINS DRIVE  
PORTLAND, MAINE 04102  
800.426.4262 | www.woodardcurran.com

COMMITMENT & INTEGRITY DRIVE RESULTS

LDD PROJECT NAME:  
N/A  
DRAWING NAME:  
225672.77 C20X 24x36.DWG  
FIELD BOOK USED:  
N/A

REFERENCES:  
Drawings\2012.dwg

DESIGNED BY:	BCM/JLS
DRAWN BY:	BCM
CHECKED BY:	DAS
SCALE:	N.T.S.
DATE:	JULY 9, 2014

ROCKLAND AVENUE OUTFALL  
HYDROBRAKE REMOVAL  
LOCATION PLAN

CITY OF PORTLAND, MAINE  
PUBLIC SERVICES DEPARTMENT  
ENGINEERING SECTION



SHEET #  
8 OF 8  
PLAN NUMBER  
FIG. 1

NOTE: PROVIDED BY CITY OF PORTLAND