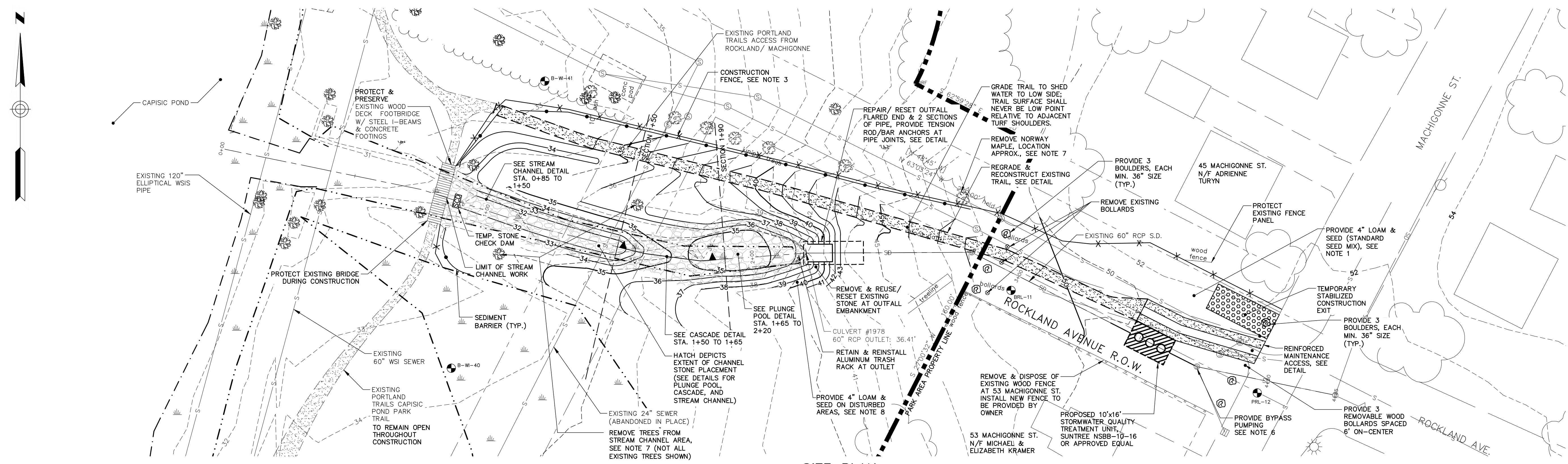


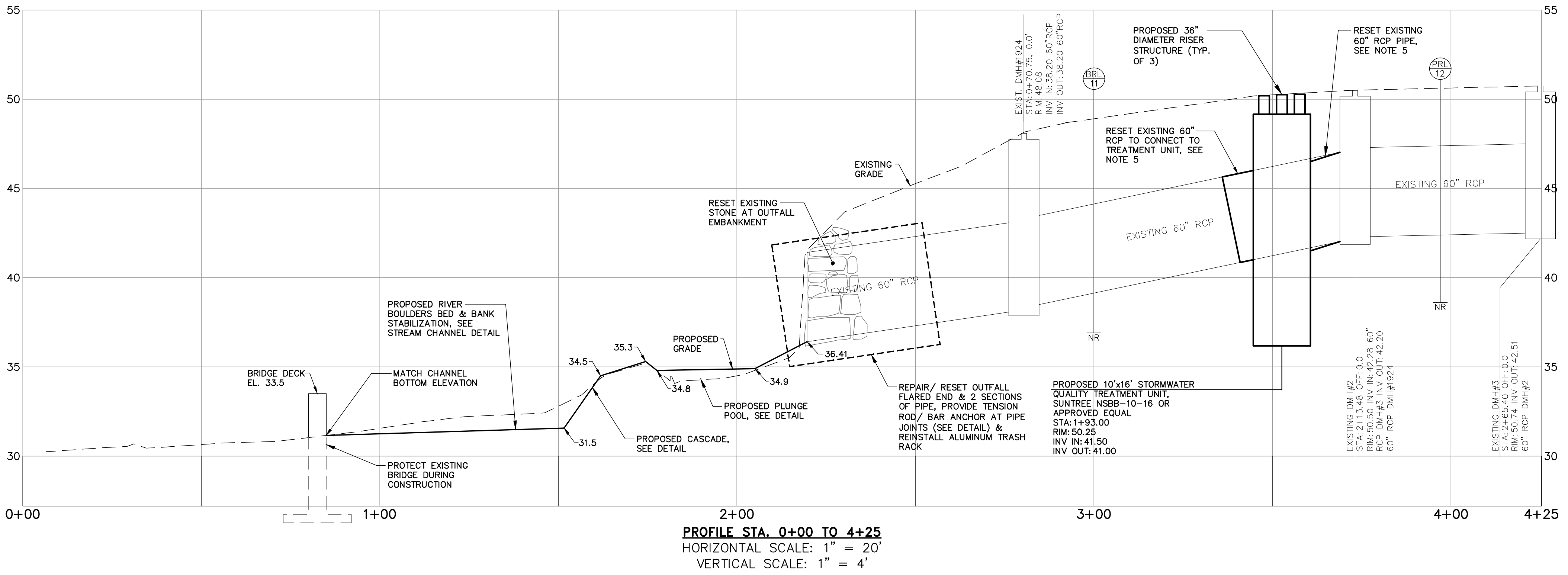
PORTLAND Projects\225672.77 C20X 24x36.dwg, Jul 09, 2014 - 3:15pm
 Portland-Cen Eng Svcs\wp 177 Capisic Pond Ph III Drawings\Design Drawings\225672.77 C20X 24x36.dwg



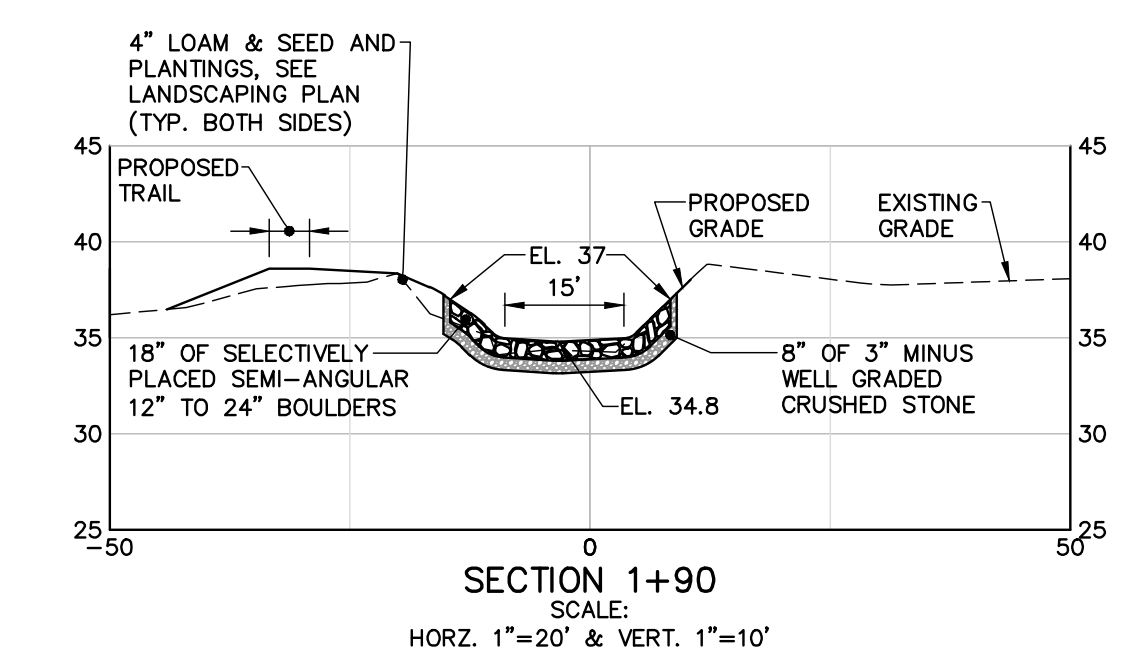
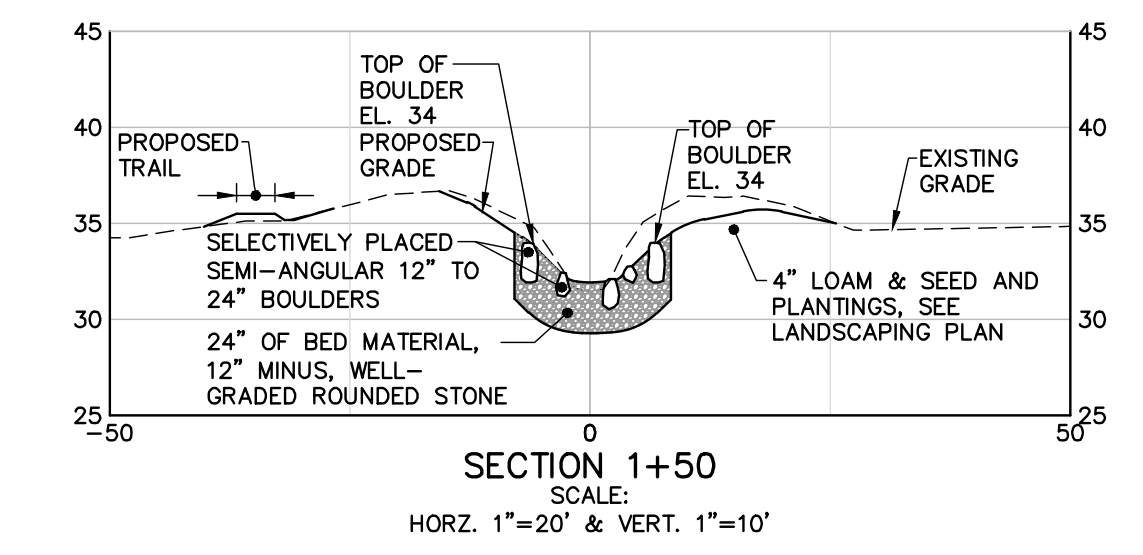
SITE PLAN
SCALE: 1" = 20'

NOTES:

- THE ENTRANCE TO THE ROCKLAND AVENUE OUTFALL AREA AT THE INTERSECTION OF ROCKLAND AVENUE AND MACHIGONNE STREET SHALL BE REVEGETATED WITH 4" LOAM AND SEED, EXCEPT IN AREAS IDENTIFIED FOR GRAVEL SURFACE PER THE DETAIL FOR REINFORCED MAINTENANCE ACCESS AND TRAIL.
- ADDITIONAL LANDSCAPING MAY BE INSTALLED IN THE VICINITY OF THE MAINTENANCE ACCESS WAY. QUANTITIES AND LOCATIONS OF PLANTINGS SHALL BE DETERMINED BY THE CITY, AND COST SHALL BE WITHIN ADDITIONAL LANDSCAPING ALLOWANCE AS IDENTIFIED IN THE CONTRACT DOCUMENTS. UPON COMPLETION OF CONSTRUCTION THE STORMWATER TREATMENT UNIT AND MAINTENANCE ACCESS WAY, CONTRACTOR SHALL CONTACT CITY OF PORTLAND ARBORIST JEFF TARLING (207-874-8801) TO COORDINATE TYPE AND LOCATION OF ADDITIONAL LANDSCAPING.
- THE CONTRACTOR MAY MODIFY THE LOCATION OF THE CONSTRUCTION FENCE, AND MAY MOVE THE FENCE DURING CONSTRUCTION TO PROVIDE FOR A SAFE CONSTRUCTION SITE.
- THE CONSTRUCTION SITE CONTAINS AN ACTIVE PEDESTRIAN TRAIL THAT MAY BE CLOSED DURING CONSTRUCTION AS NECESSARY. THE CONTRACTOR SHALL COORDINATE WITH THE CITY OF PORTLAND AND WITH PORTLAND TRAILS (JAIME PARKER 207-775-2411) PRIOR TO THE START OF CONSTRUCTION ON THE TIMING OF TRAIL CLOSURE SO THAT ADEQUATE NOTICE MAY BE PROVIDED TO THE PUBLIC. CONTRACTOR SHALL ALSO COORDINATE WITH JAIME PARKER FOR INSPECTION OF NEW TRAIL CONSTRUCTION.
- CONTRACTOR MAY UTILIZE PLASTIC PIPE (SANITITE HP, BY ADS, OR EQUAL) TO CONNECT STORMWATER QUALITY UNIT TO EXISTING RCP PIPE. CONNECTION BETWEEN RCP AND HDPE PIPE MUST BE MAR-MAC POLYSEAL PIPE COUPLER, OR EQUAL, SEE DETAIL.
- CONTRACTOR SHALL BYPASS PUMP BASE FLOW FROM EXISTING DMH #3, LOCATED UPSTREAM OF PROJECT AREA TO CAPISIC POND. A PUMPED DISCHARGE SEDIMENT CONTROL DEVICE SHALL BE UTILIZED (SEE DETAIL) AND MAY BE MOVED TO ACCOMMODATE CONSTRUCTION. WORK SHALL NOT OCCUR DURING STORM EVENTS THAT EXCEED CAPACITY OF THE BYPASS SYSTEM.
- NORWAY MAPLE LOCATED ADJACENT TO THE GRAVEL PATH SHALL BE REMOVED PER THE DIRECTION OF THE CITY OF PORTLAND. PROTECT ALL OTHER EXISTING TREES LOCATED NORTH OF THE GRAVEL PATH. EXISTING TREES ALONG STREAM CHANNEL SHALL BE REMOVED, AND SHALL BE REPLACED WITH VEGETATION IN ACCORDANCE WITH THE LANDSCAPE PLAN ON SHEET C-202. CONTRACTOR SHALL CONTACT THE CITY ARBORIST PRIOR TO ANY TREE REMOVAL AND CITY ARBORIST SHALL IDENTIFY SPECIFIC TREES FOR REMOVAL.
- ALL AREAS DISTURBED BY CONSTRUCTION AND NOT IDENTIFIED FOR OTHER SURFACE TREATMENT SHALL RECEIVE 4" LOAM AND SEED. ALL AREAS INSIDE PARK PROPERTY SHALL USE NEW ENGLAND CONSERVATION/WILDLIFE SEED MIX AND ALL AREAS OUTSIDE OF PARK SHALL USE STANDARD SEE MIX, PER SPECIFICATIONS.



PROFILE STA. 0+00 TO 4+25
HORIZONTAL SCALE: 1" = 20'
VERTICAL SCALE: 1" = 4'

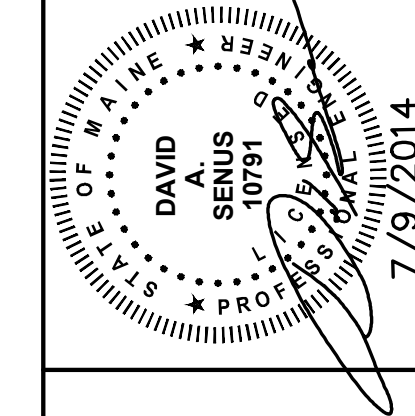


BAR SCALE
1" = 20'
CHECK GRAPHIC SCALE BEFORE USING

41 HUTCHINS DRIVE
 PORTLAND, MAINE 04102
 800.426.4262 | www.woodardcurran.com
WOODARD & CURRAN
 COMMITMENT & INTEGRITY DRIVE RESULTS

LDD PROJECT NAME:
 N/A
 DRAWING NAME:
 225672.77 C20X 24x36.DWG
 FIELD BOOK USED:
 N/A

DESIGNED BY:
 BCM/JLS
 DRAWN BY:
 BCM
 CHECKED BY:
 DAS
 SCALE:
 AS NOTED
 DATE:
 JULY 9, 2014



ROCKLAND AVENUE OUTFALL
 SITE PLAN & PROFILE,
 SECTIONS

CITY OF PORTLAND, MAINE
 PUBLIC SERVICES DEPARTMENT
 ENGINEERING SECTION



SHEET #
 3 OF 8
 PLAN NUMBER
 C-201