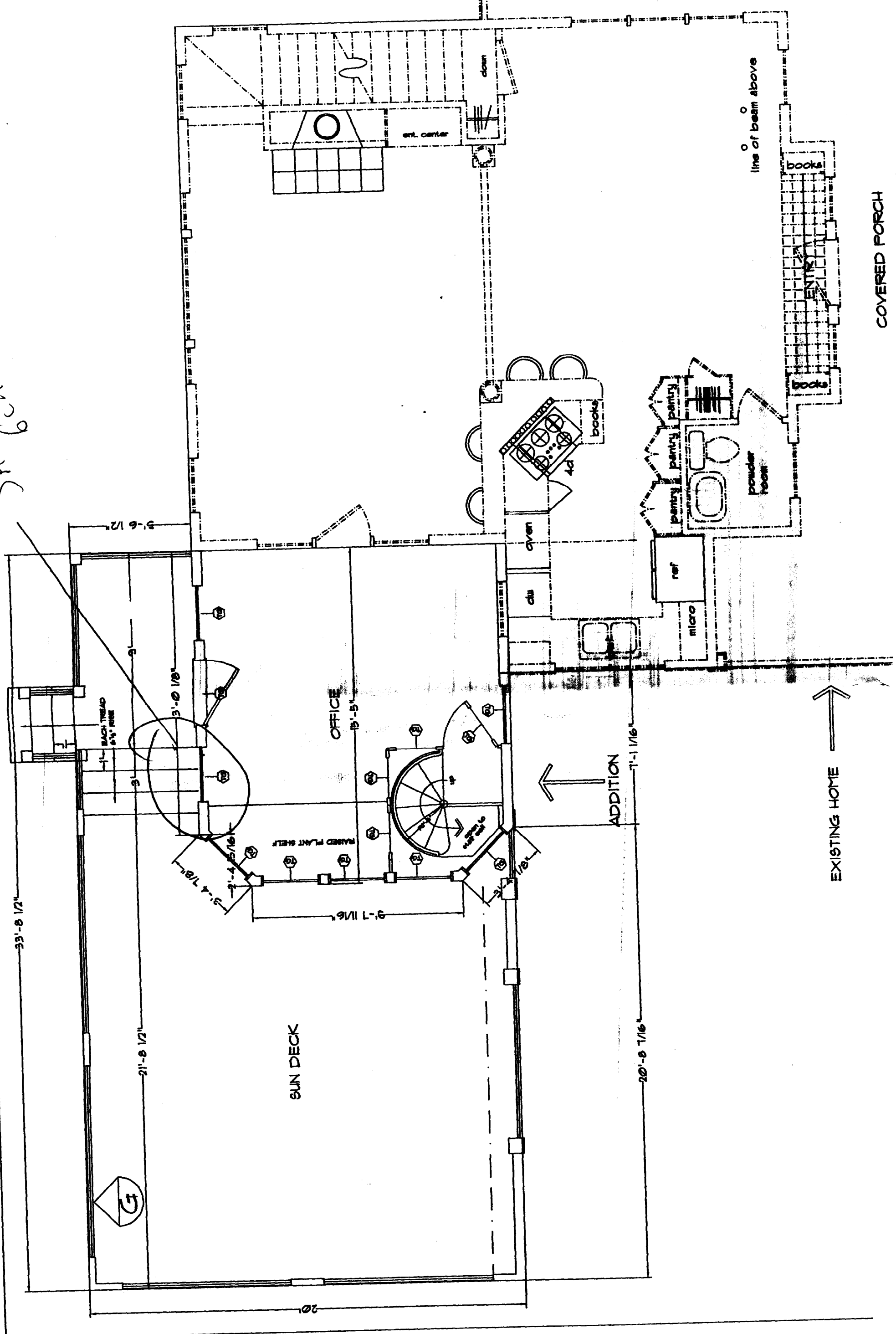


Sheet 2 of 4
S.A. 60



COVERED PORCH

EXISTING HOME

ADDITION

line of beam above

ent. center

OFFICE

SUN DECK

powder room

ref

micro

oven

cab

books

books

books

books

books

books

books

books

books

books

books

books

books

books

books

books

BACH TREAD
5 1/2" RISE

RAISED PLANT SHELF

1/2" x 1/2"

33'-8 1/2"

21'-8 1/2"

9'-7 1/16"

20'-8 7/16"

7'-1 1/16"

5'-6 1/2"

3'-0 1/8"

3'-4 7/8"

3'-4 5/16"

15'-5"

15'-5"

15'-5"

15'-5"

15'-5"

15'-5"

15'-5"

15'-5"

15'-5"

15'-5"

15'-5"

15'-5"

15'-5"

15'-5"

15'-5"

15'-5"

15'-5"

15'-5"

15'-5"

15'-5"

15'-5"

15'-5"

15'-5"

15'-5"

15'-5"

15'-5"

15'-5"

15'-5"

15'-5"

15'-5"

15'-5"

15'-5"

15'-5"

15'-5"

15'-5"

15'-5"

15'-5"

15'-5"

15'-5"

15'-5"

15'-5"

15'-5"

15'-5"

15'-5"

15'-5"

15'-5"

15'-5"

15'-5"

15'-5"

15'-5"

15'-5"

15'-5"

15'-5"

15'-5"

15'-5"

15'-5"

15'-5"

15'-5"

15'-5"

15'-5"

15'-5"

15'-5"

15'-5"

15'-5"

15'-5"

15'-5"

15'-5"

15'-5"

15'-5"

15'-5"

15'-5"

15'-5"

15'-5"

15'-5"

15'-5"

15'-5"

15'-5"

15'-5"

15'-5"

15'-5"

15'-5"

15'-5"

15'-5"

15'-5"

15'-5"

15'-5"

15'-5"

15'-5"

15'-5"

15'-5"

15'-5"

15'-5"

15'-5"

15'-5"

15'-5"

15'-5"

15'-5"

15'-5"

15'-5"

15'-5"

15'-5"

15'-5"

15'-5"

15'-5"

15'-5"

15'-5"

15'-5"

15'-5"

15'-5"

15'-5"

15'-5"

15'-5"

15'-5"

15'-5"

15'-5"

15'-5"

15'-5"

15'-5"

15'-5"

15'-5"

15'-5"

15'-5"

15'-5"

15'-5"

15'-5"

15'-5"

15'-5"

15'-5"

15'-5"

15'-5"

15'-5"

15'-5"

15'-5"

15'-5"

15'-5"

15'-5"

15'-5"

15'-5"

15'-5"

15'-5"

15'-5"

15'-5"

15'-5"

15'-5"

15'-5"

15'-5"

15'-5"

15'-5"

15'-5"

15'-5"

15'-5"

15'-5"

15'-5"

15'-5"

15'-5"

15'-5"

15'-5"

15'-5"

15'-5"

15'-5"

15'-5"

15'-5"

15'-5"

15'-5"

15'-5"

15'-5"

15'-5"

15'-5"

15'-5"

15'-5"

15'-5"

15'-5"

15'-5"

15'-5"

15'-5"

15'-5"

15'-5"

15'-5"

15'-5"

15'-5"

15'-5"

15'-5"

15'-5"

15'-5"

15'-5"

15'-5"

15'-5"

15'-5"

15'-5"

15'-5"

15'-5"

15'-5"

15'-5"

15'-5"

15'-5"

15'-5"

15'-5"

15'-5"

15'-5"

15'-5"

15'-5"

15'-5"

15'-5"

15'-5"

15'-5"

15'-5"

15'-5"

15'-5"

15'-5"

15'-5"

15'-5"

15'-5"

15'-5"

15'-5"

15'-5"

15'-5"

15'-5"

15'-5"

15'-5"

15'-5"

15'-5"

15'-5"

15'-5"

15'-5"

15'-5"

15'-5"

15'-5"

15'-5"

15'-5"

15'-5"

15'-5"

15'-5"

15'-5"

15'-5"

15'-5"

15'-5"

15'-5"

15'-5"

15'-5"

15'-5"

15'-5"

15'-5"

15'-5"

15'-5"

15'-5"

15'-5"

15'-5"

15'-5"

15'-5"

15'-5"

15'-5"

15'-5"

15'-5"

15'-5"

15'-5"

15'-5"

15'-5"

15'-5"

15'-5"

15'-5"

15'-5"

15'-5"

15'-5"

15'-5"

15'-5"

15'-5"

15'-5"

15'-5"

15'-5"

15'-5"

15'-5"

15'-5"

15'-5"

15'-5"

15'-5"

15'-5"

15'-5"

15'-5"

15'-5"

15'-5"

15'-5"

15'-5"

15'-5"

15'-5"

15'-5"

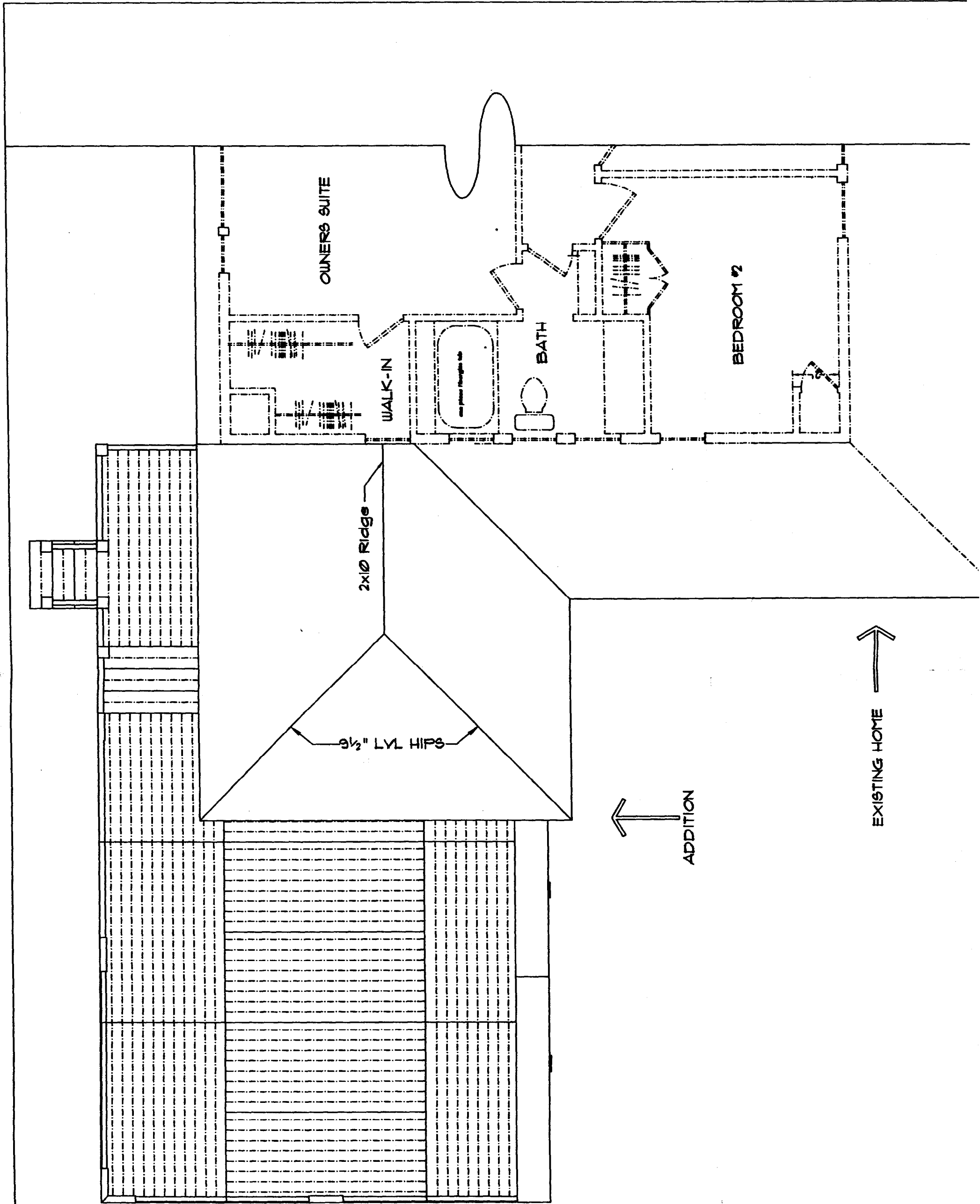
15'-5"

15'-5"

15'-5"

15'-5"

15'-5



OWNERS SUITE

WALK-IN

BATH

BEDROOM #2

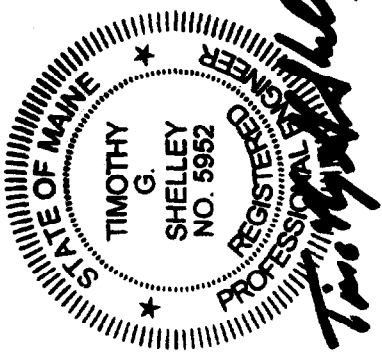
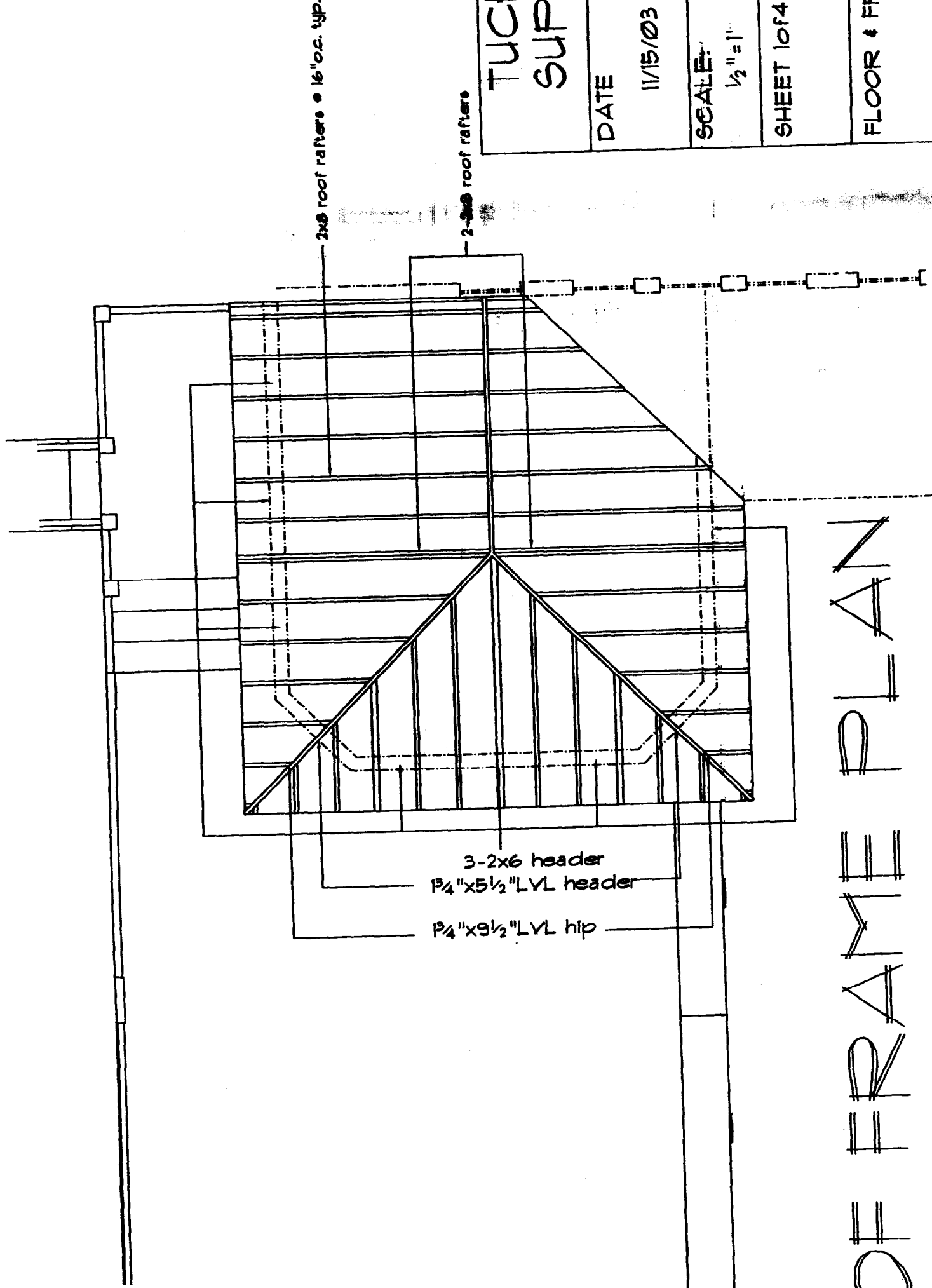
2x10 Ridge

9 1/2" LVL HIPS

ADDITION

EXISTING HOME

SECOND FLOOR PLAN



TUCKER/WEINSCHEK ADDITION SUPPLEMENTAL DRAWINGS

DATE	11/15/03	The Cottage Design Company 46 Torrington Point, Peaks Island Maine 04062 (207) 766-2900 Do not reproduce Cottage Design Co. 2003. All rights. Printed in United States
SCALE	1/2" = 1'	
SHEET	1 of 4	
FLOOR & FRAME PLANS		These plans have been prepared to meet top professional standards and practices. However, local variations may require changes. Local code requirements vary with location and change from time to time. Starting construction, your contractor should check and be responsible for all dimensions and other details, and should review the plans to ensure they meet current governmental requirements in your area.

DE FRAME PLAN

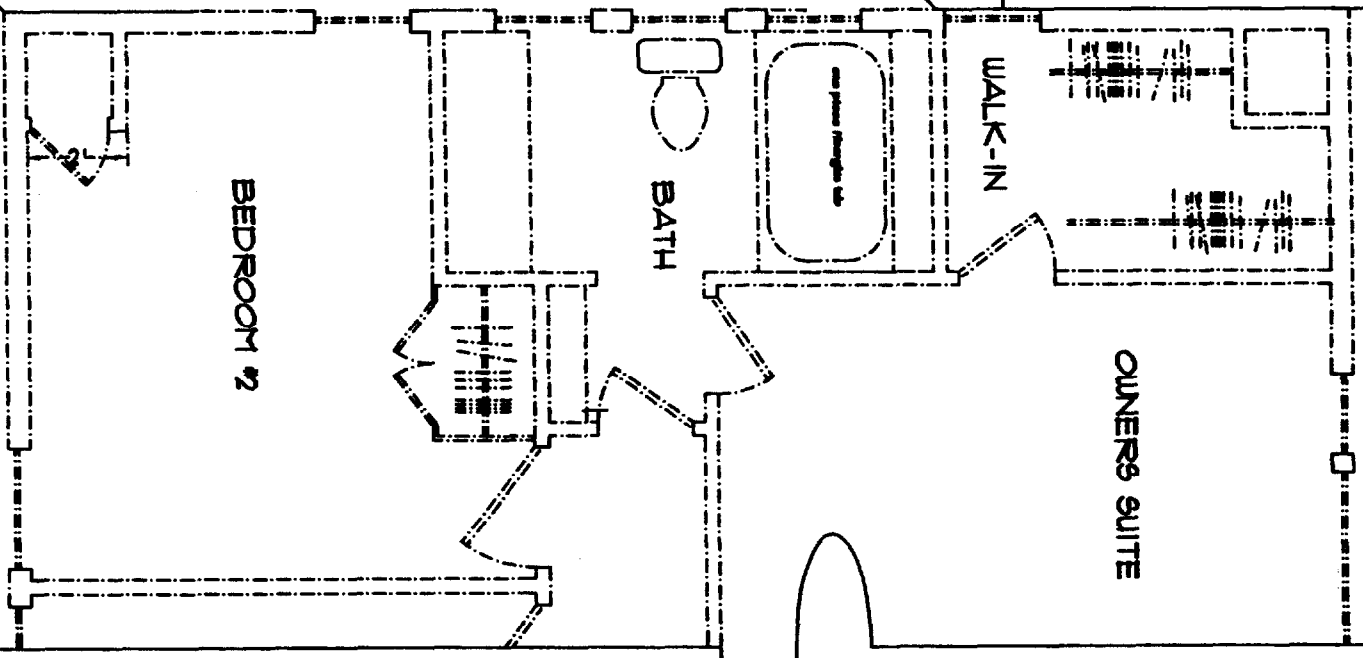
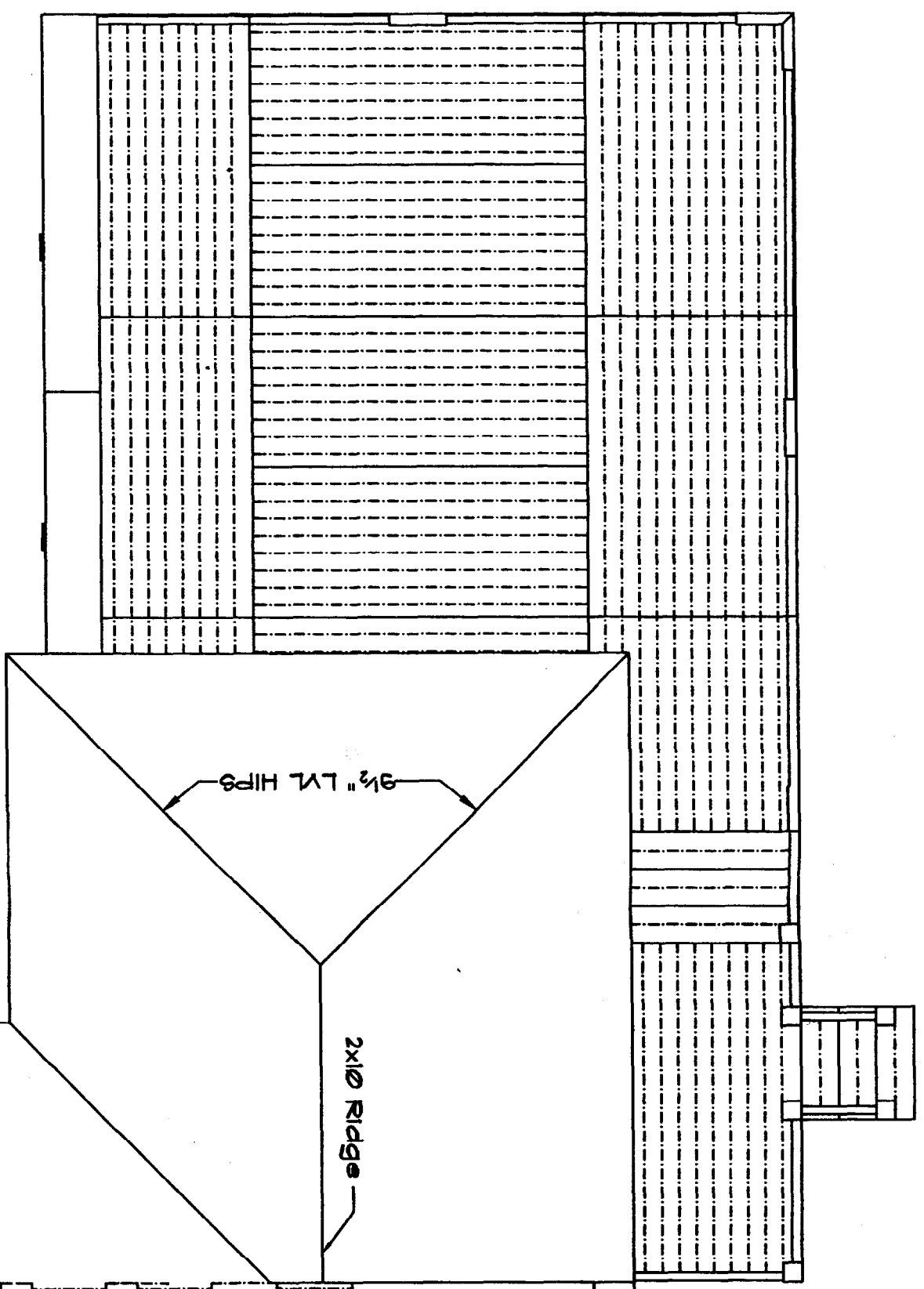
Roof Loads = 42 # / sq'
 Floor Loads = 40 # / sq' all other rooms
 = 30 # / sq' for bedrooms

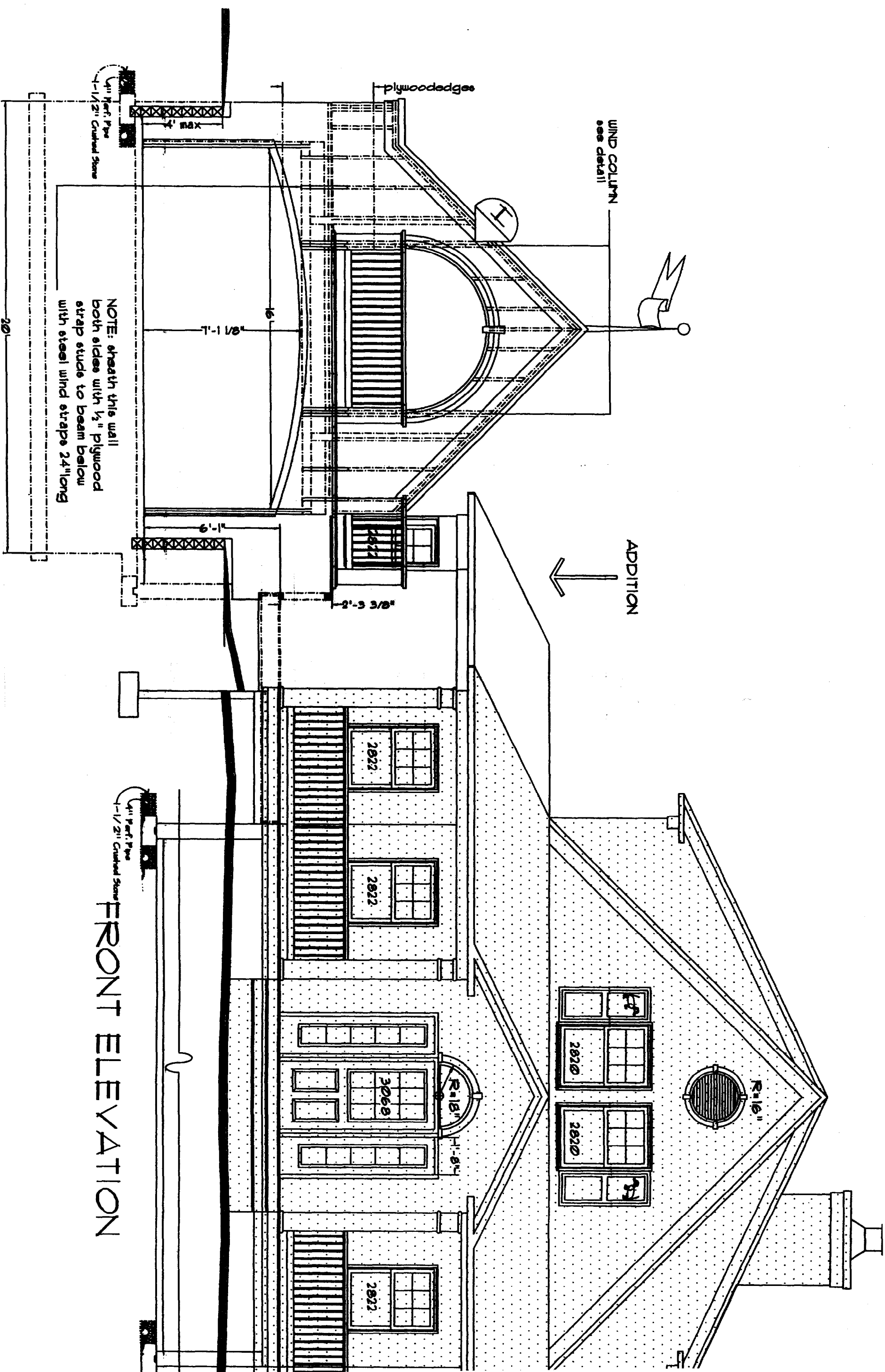
Codes govern over drawings
 Dimensions govern over scale.
 Verify all mechanical requirements, before framing.
 Verify topographic and subsurface conditions, and adapt foundation plans accordingly.

time to time.
 architect
 red on

EXISTING HOME →

ADDITION →





NOTE: sheath this wall
both sides with 1/2" plywood
strap studs to beam below
with steel wind straps 24" long

WIND COLUMN
see detail

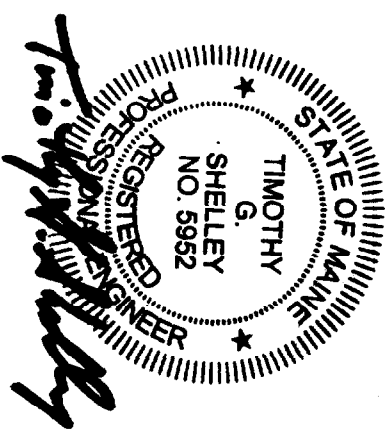
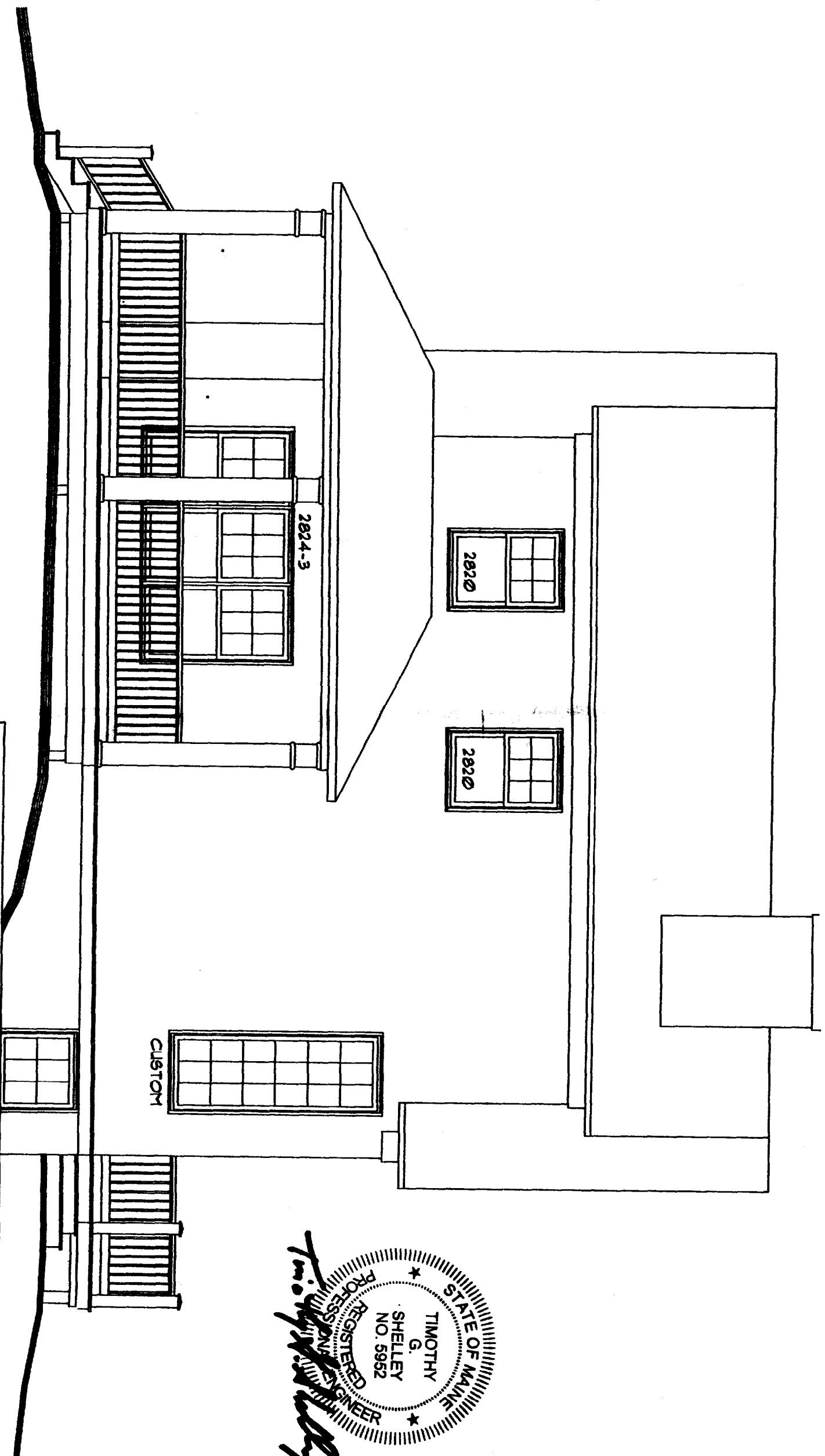
ADDITION
↑

FRONT ELEVATION

GENERAL NOTES AND DISCLAIMERS: These drawings have been prepared to meet generally accepted professional standards. However, local variations may require changes. Likewise, building code requirements vary with location and change. Before starting construction, the builder must review and be responsible for all details and dimensions, and ensure that these plans meet all current requirements in your area. It is also suggested that a professional engineer be retained to review and make any changes necessary to ensure that plans meet all requirements, and that you check with your local building department to see if a professional stamp is required for permit purposes. All applicable construction shall conform to the latest editions of either "Uniform Building Code" or the "BOCA Basic Building Code," or any other locally required code.

NG HOME

RIGHT ELEVATION
no change proposed



TUCKERWEINSCHEK ADDITION
SUPPLEMENTAL DRAWINGS

DATE

11/15/03

The Cottage Design Company

SCALE:

1/2" = 1'

46 Torrington Point, Peaks Island Maine 04108
(207) 766-2900

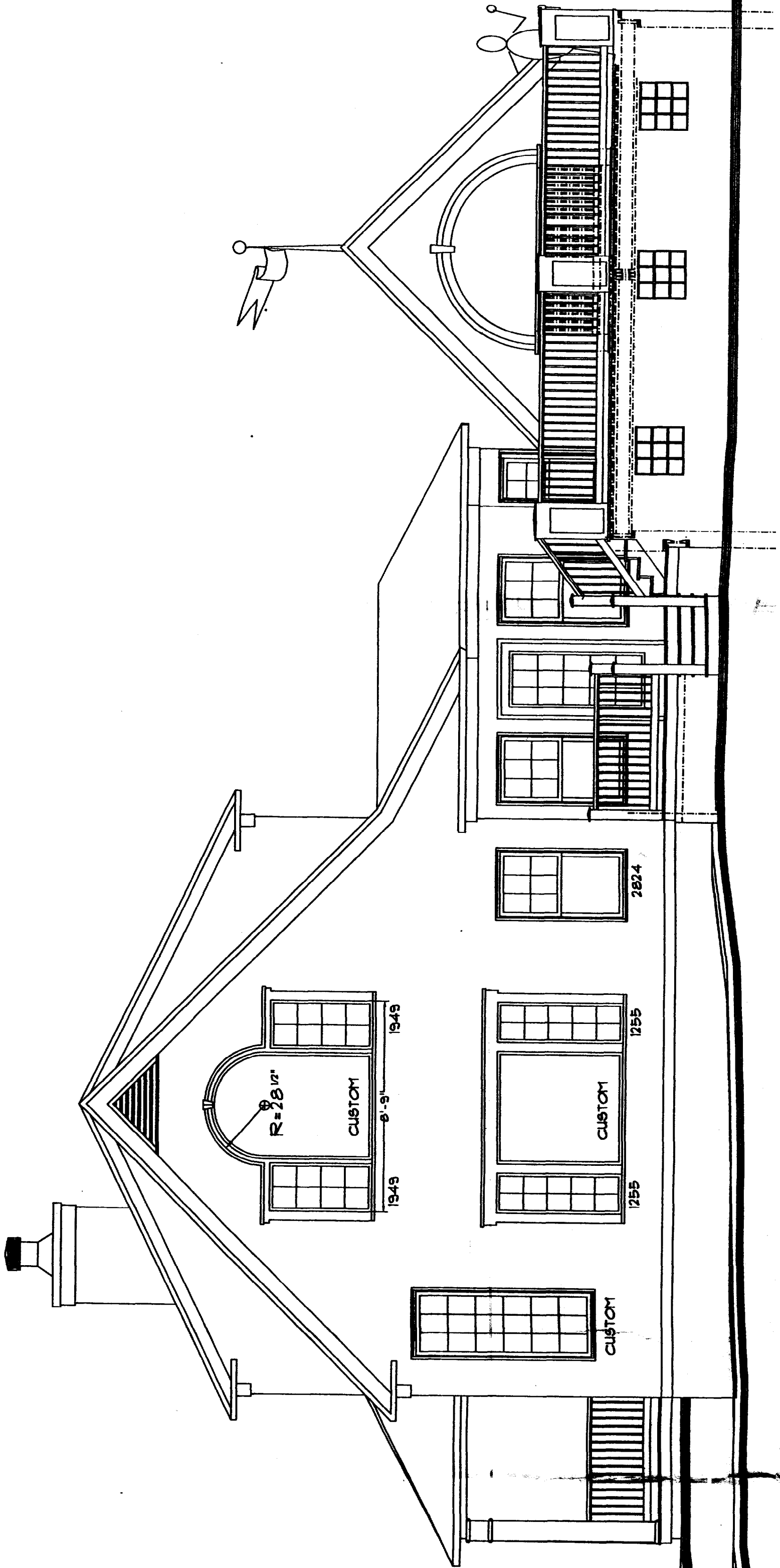
SHEET 2014

Do not reproduce

©Cottage Design Co. 2003. All rights. Printed in United States of America

ELEVATIONS

These plans have been prepared to meet top professional standards and practices. However, local variations may require changes. Likewise, building

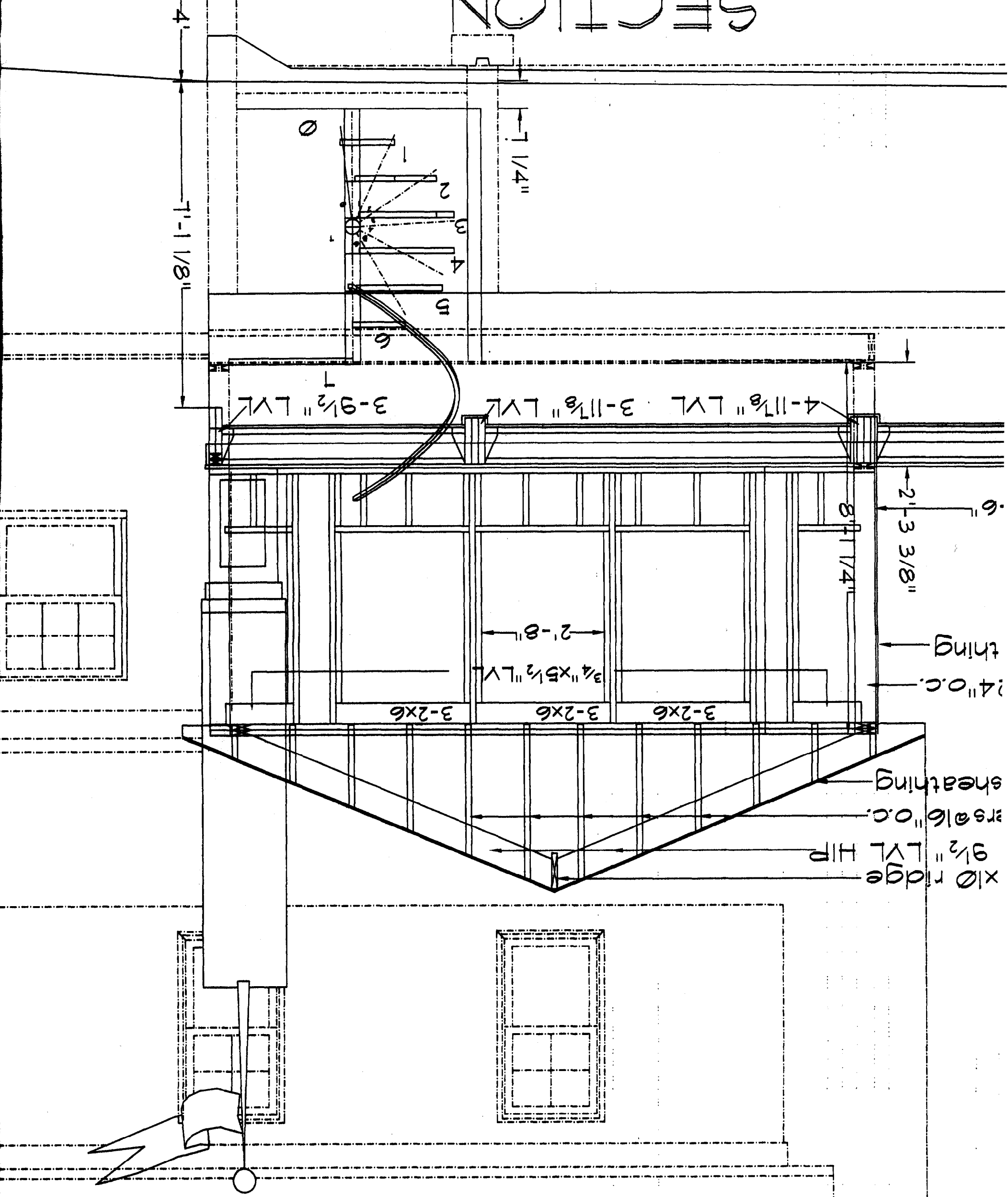


SECTIONS & DETAILS
 SHEET 3014
 SCALE: 1/2" = 1'
 DATE: 11/15/03

TUCKER
 SUPPLY

SECTION

stone



beds - 42# / sq'
beds - 40# / sq' all other
beds - 30# / sq' for bedrooms

These plans have been prepared to meet top professional standards and practices. However, local variations may require changes. Likewise, building codes requirements vary with location and change from time to time. Before starting construction, your contractor should check and be responsible for all dimensions and other details, and should review the plans to ensure they meet current governmental requirements in your area.

SECTIONS & DETAILS

© Cottage Design Co. 2003. All rights. Printed in United States of America

SHEET 30F4

Do not reproduce

SCALE:

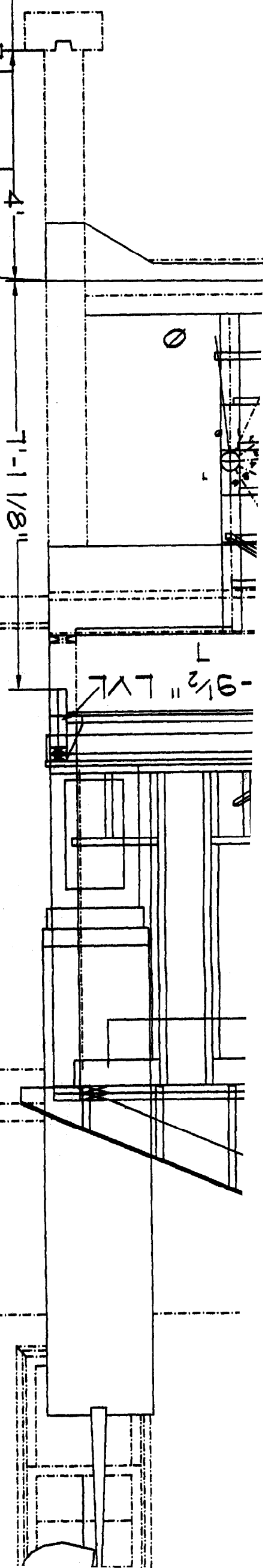
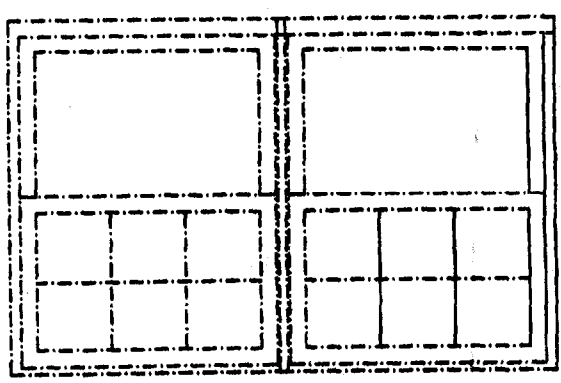
1/2" = 1'

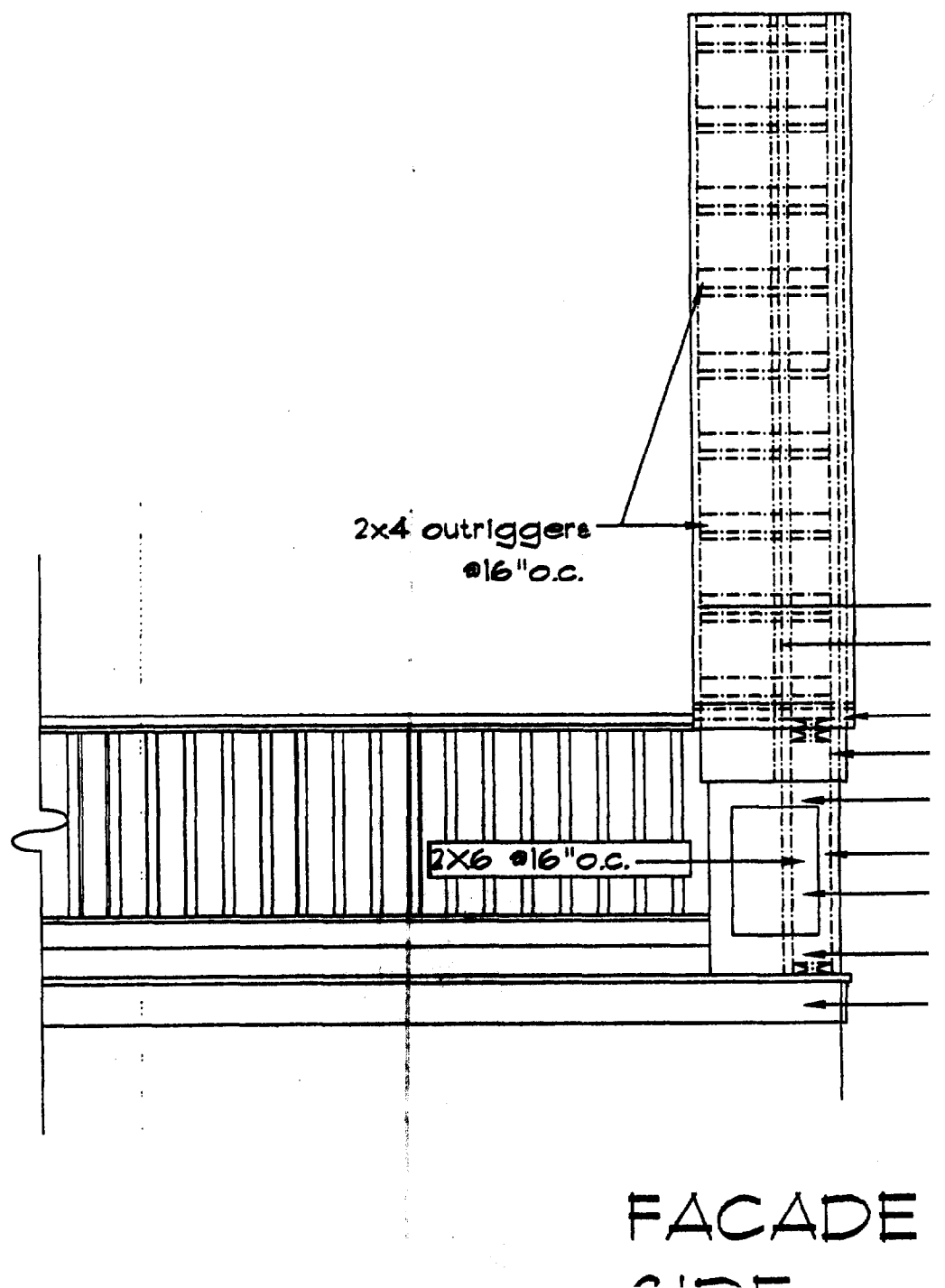
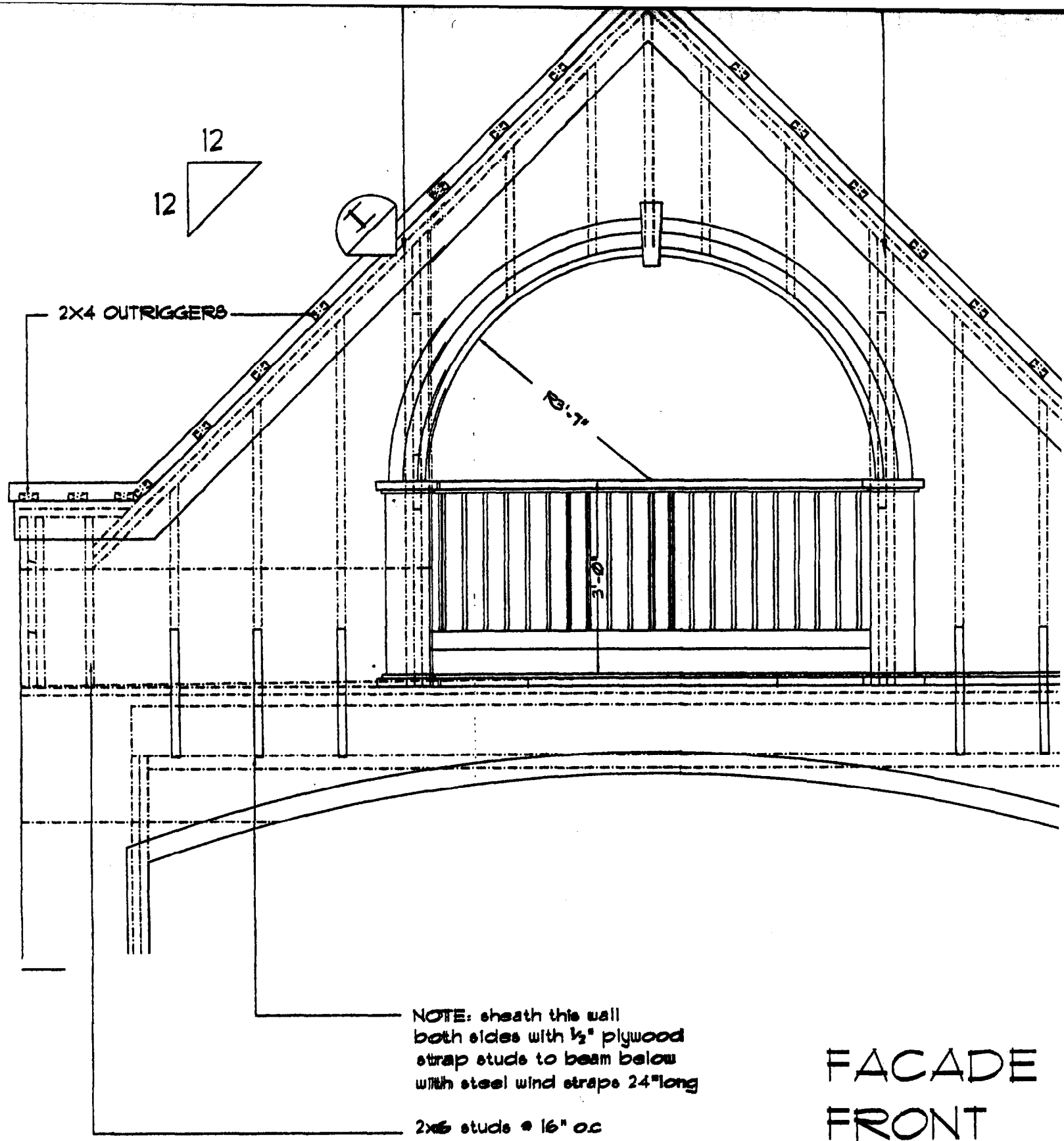
46 Torrington Point, Peaks Island Maine 04108
(207) 766-2900

DATE 11/5/03

The Cottage Design Company

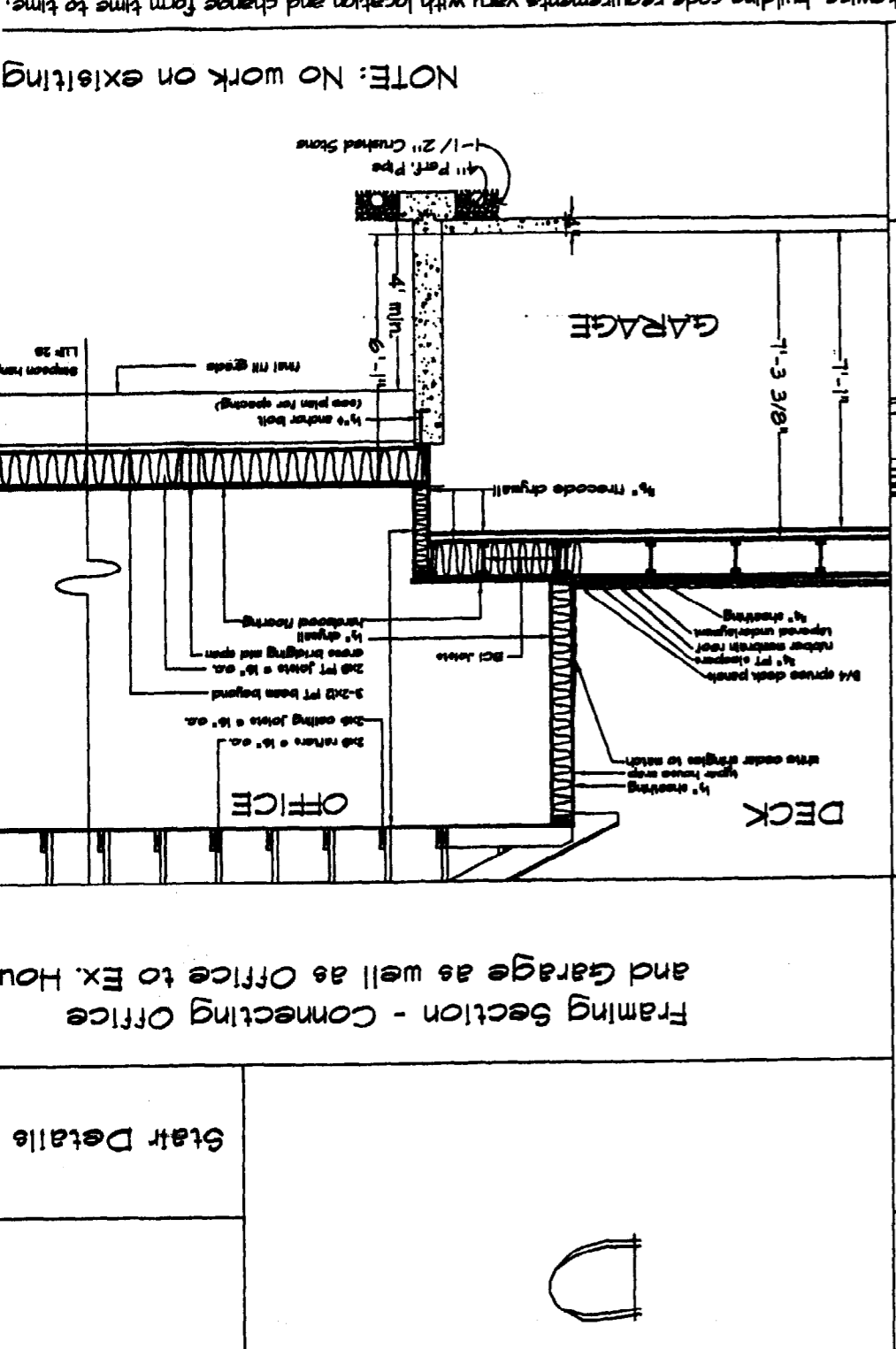
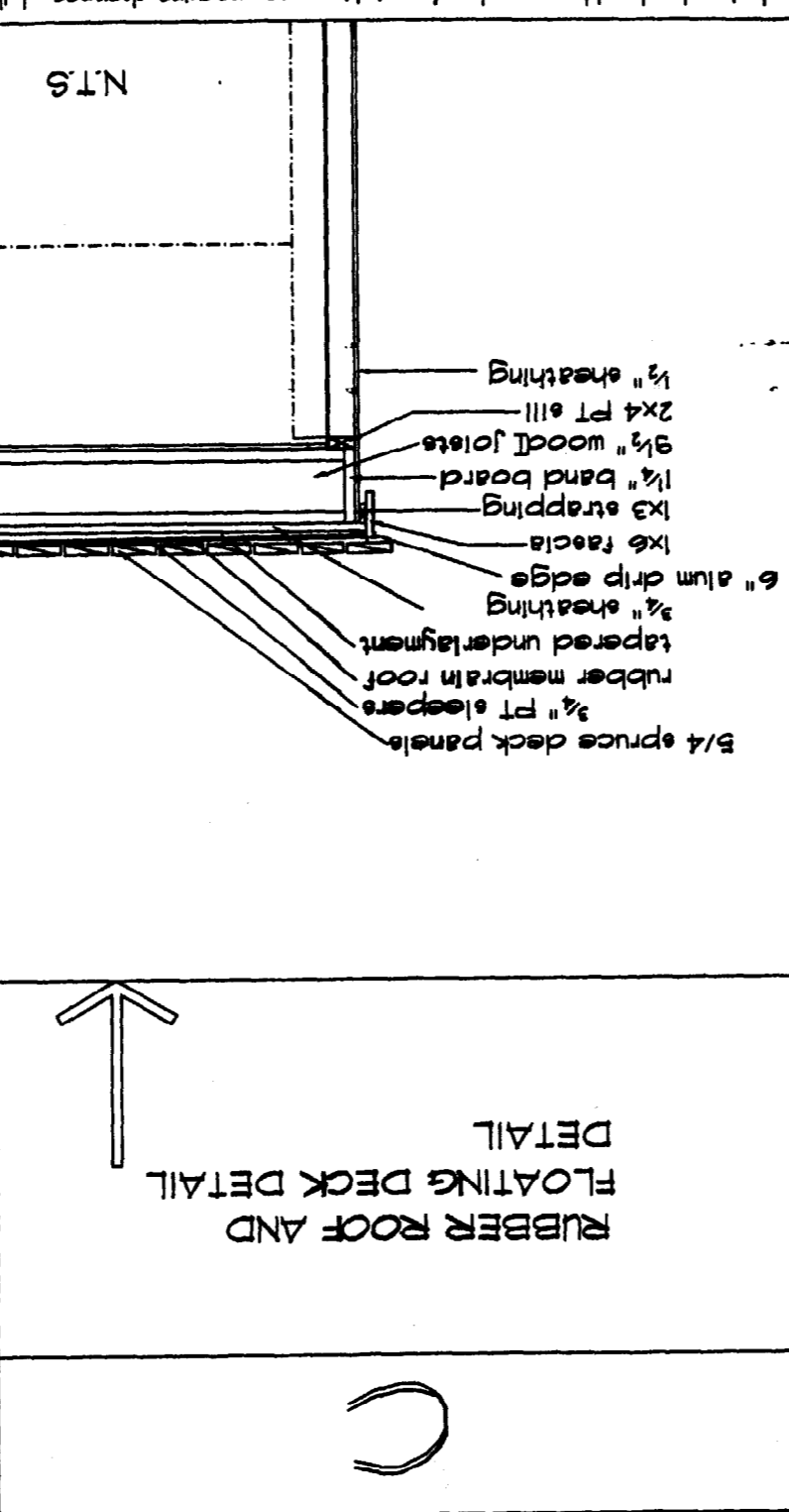
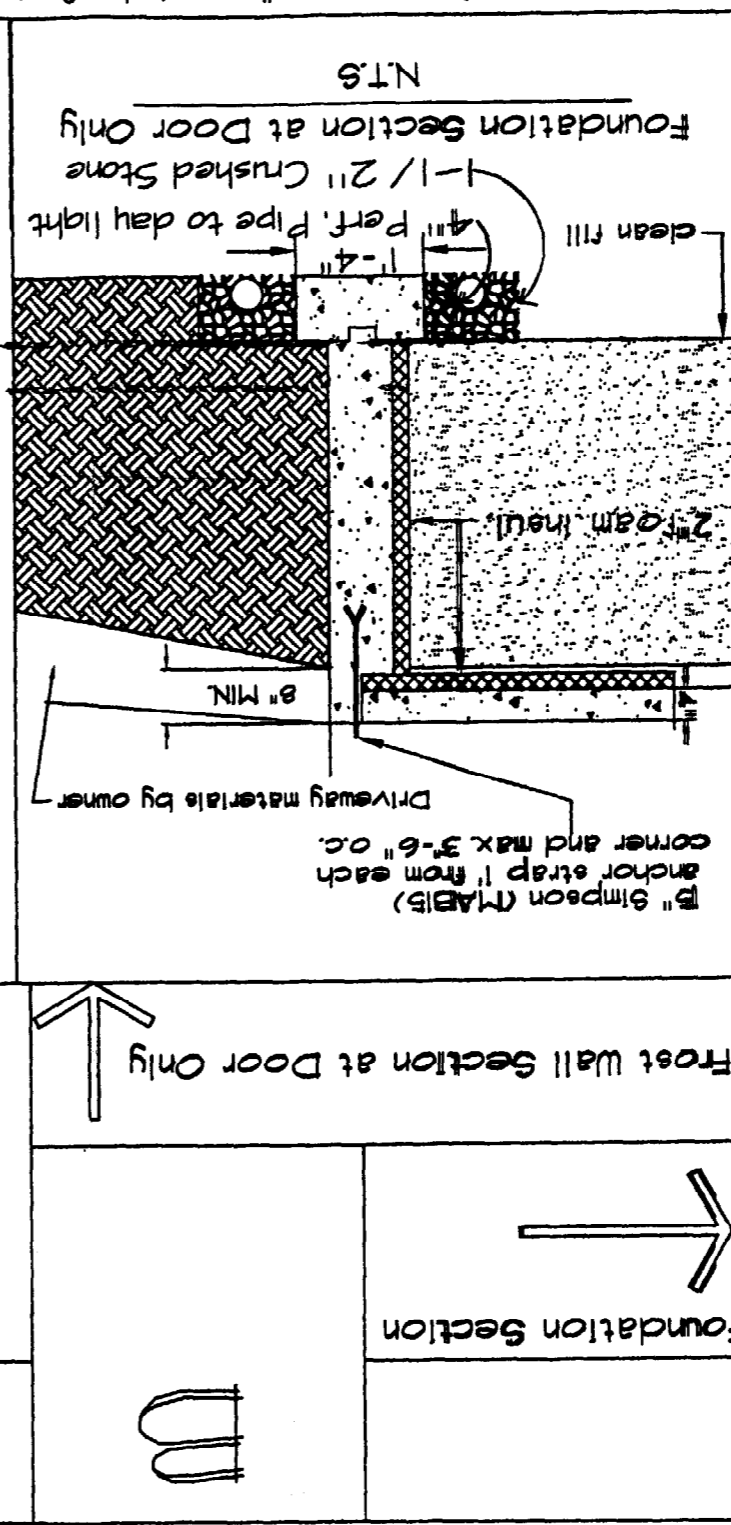
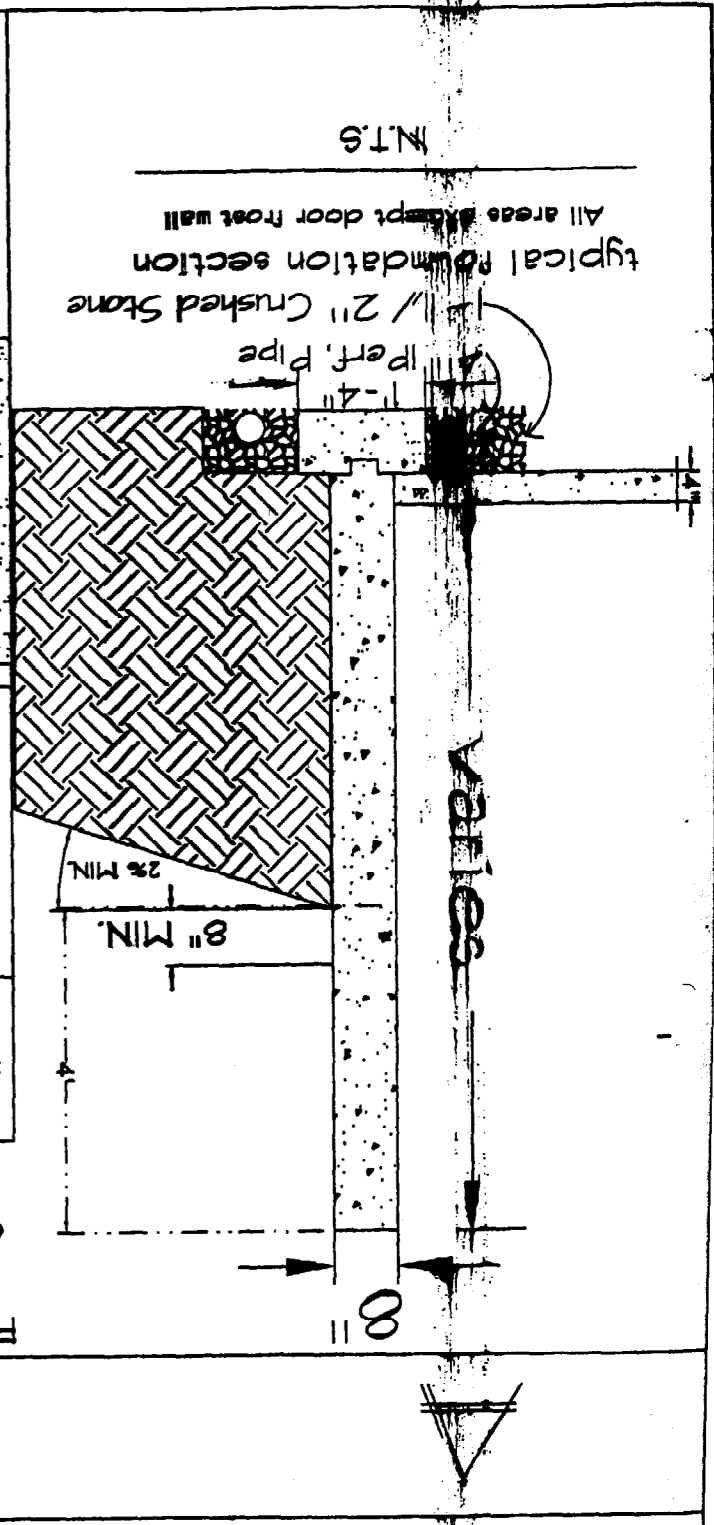
TUCKER/WEINSCHEK ADDITION
SUPPLEMENTAL DRAWINGS





GENERAL NOTES AND DISCLAIMERS

These drawings have been prepared to meet generally accepted professional standards. However, local variations may require changes. Likewise, building code requirements vary with location and change from time to time. Before starting construction, the builder must review and be responsible for all details and dimensions, and ensure that these plans meet all current requirements in your area. It is also suggested that a local architect and/or engineer be retained to review and make any changes necessary to ensure that plans meet all requirements, and that you check with your local building department to see if a professional stamp is required on drawings filed for permit purposes. All applicable construction shall conform to the latest editions of either "Uniform Building Code" or the "BOCA Basic Building Code," or any other locally required codes.



SCALE: 1/8" = 1'-0"

Stair Details



RUBBER ROOF AND
FLOATING DECK DETAIL



Frost Wall Section at Door Only



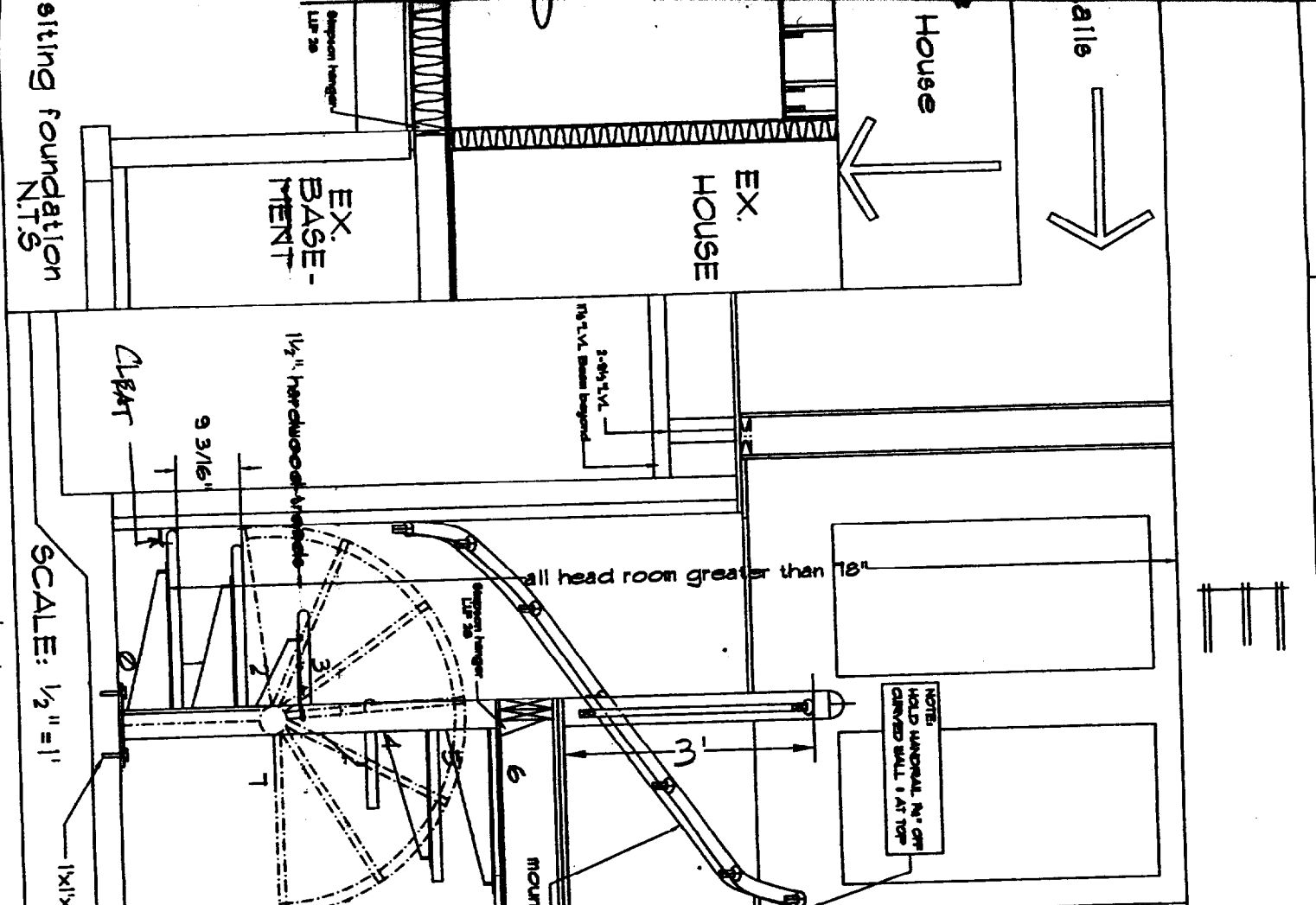
Foundation Section

8"

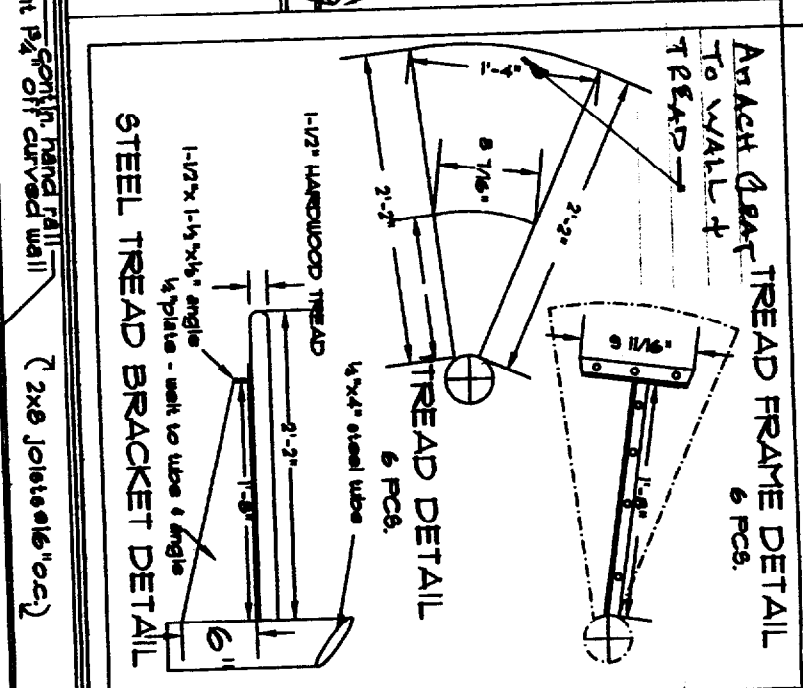
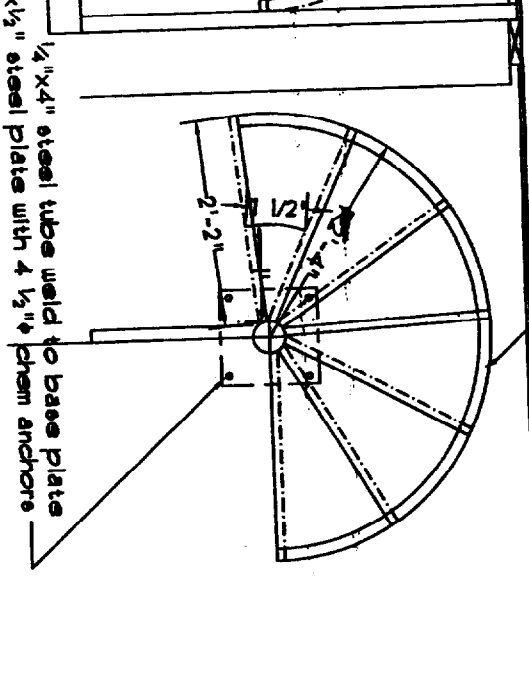


VALLIES

SCALE: 1/2" = 1'

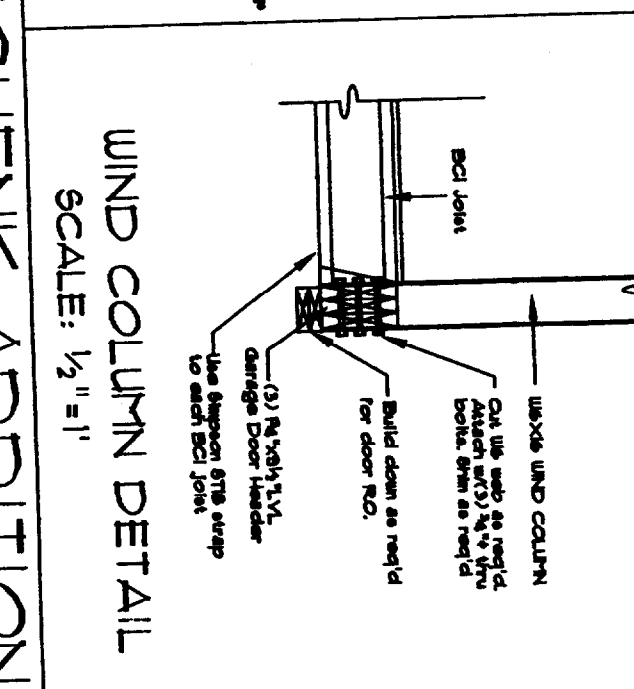
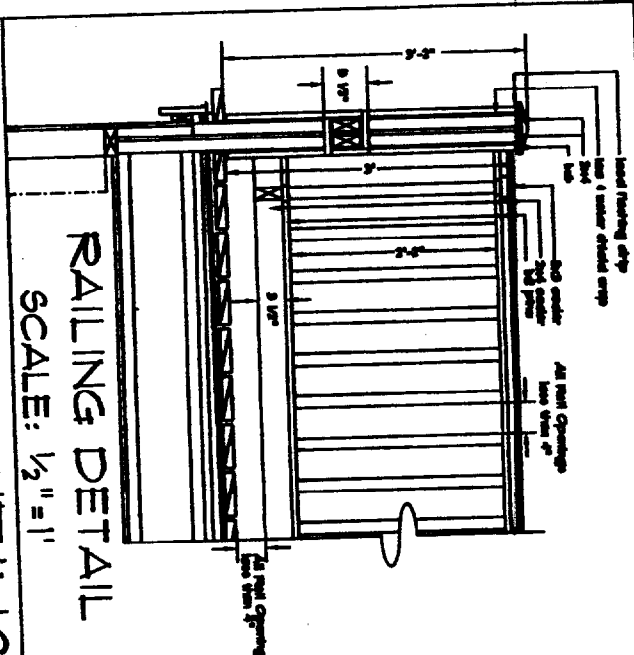


SCALE: 1/2" = 1'



Codes govern over drawings
Dimensions govern over scale.
Verify all mechanical requirements, before framing.
Verify topographic and subsurface conditions, and adapt foundation plans accordingly.

Roof Loads = 42# / sq'
Floor Loads = 40# / sq' all other
= 50# / sq' for bedrooms



TUCKER/WEINISCHENK ADDITION
SUPPLEMENTAL DRAWINGS

DATE: 11/15/03

The Cottage Design Company
46 Torrington Point, Peaks Island Maine 04108
(207) 766-2900

SCALE: 1/2" = 1'

Do not reproduce

SHEET 40F4
FOUNDATION PLANS & DETAILS

Cottage Design Co. 2003. All rights. Printed in United States of America
These plans have been prepared to meet top professional standards and practices. However, local variations may require changes. Likewise, building code requirements vary with location and change from time to time. Before starting construction, your contractor should check and be responsible for all dimensions and other details, and should review the plans to ensure they meet current governmental requirements in your area.

REGISTERED PROFESSIONAL ENGINEER
Tucker/Weinischek
8641
5465

