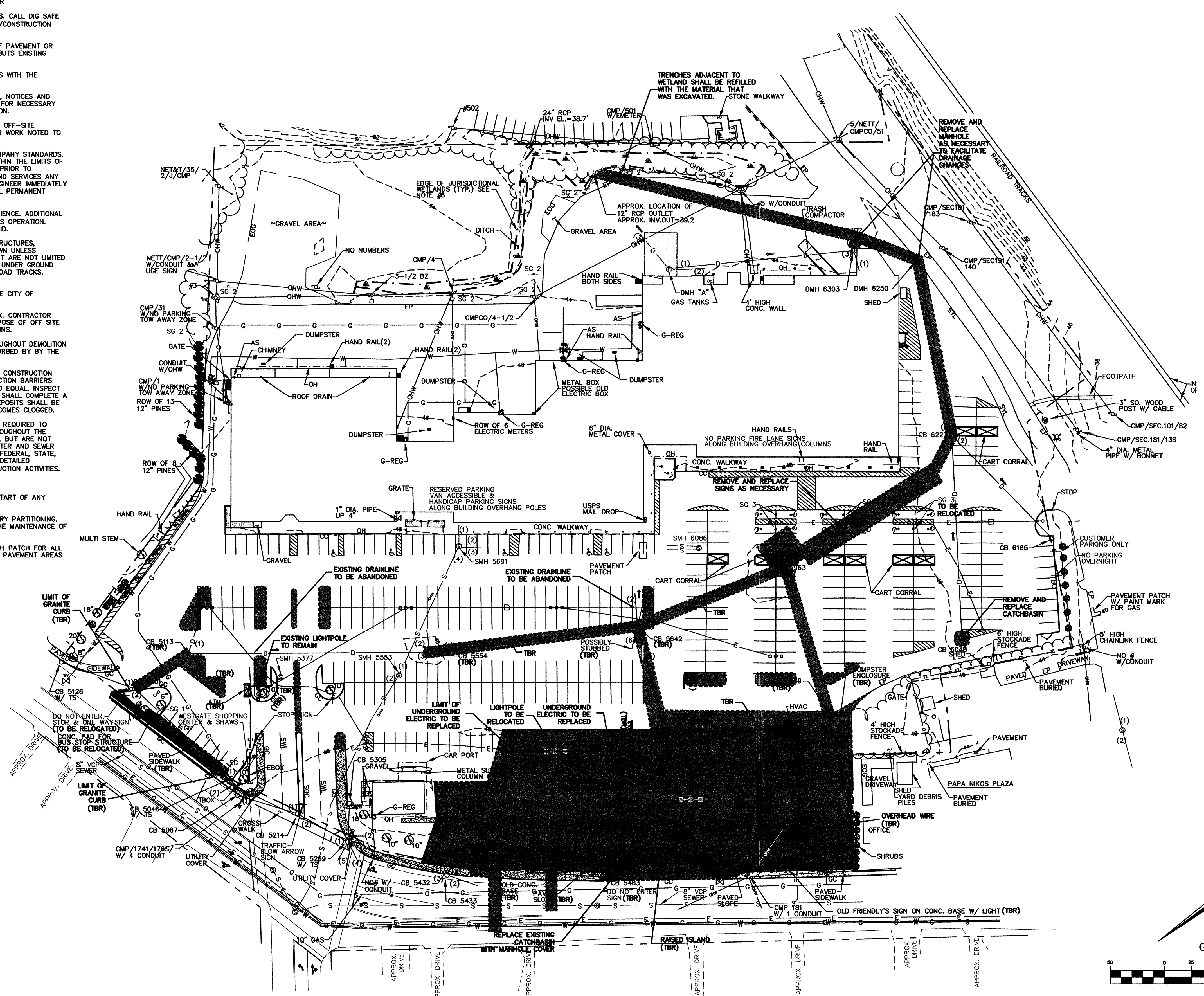


DEMOLITION NOTES:

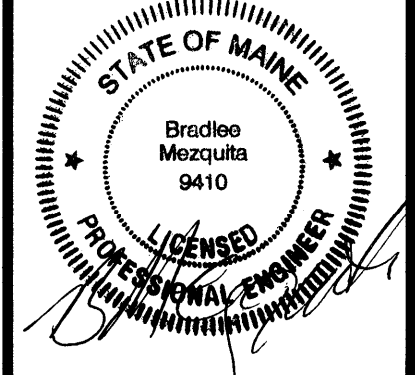
- THE LOCATION OF UNDERGROUND UTILITIES ARE APPROXIMATE AND THE LOCATION IS NOT GUARANTEED BY THE OWNER OR THE ENGINEER. IT IS THE CONTRACTOR'S RESPONSIBILITY TO LOCATE ALL UTILITIES, ANTICIPATE CONFLICTS, REPAIR EXISTING UTILITIES AND RELOCATE EXISTING UTILITIES REQUIRED TO COMPLETE THE WORK.
- ALL MATERIALS SCHEDULED TO BE REMOVED SHALL BECOME THE PROPERTY OF THE CONTRACTOR UNLESS OTHERWISE SPECIFIED. THE CONTRACTOR SHALL DISPOSE OF ALL MATERIALS OFF-SITE IN ACCORDANCE WITH ALL FEDERAL, STATE, AND LOCAL REGULATIONS, ORDINANCES AND CODES.
- COORDINATE REMOVAL, RELOCATION, DISPOSAL OR SALVAGE OF UTILITIES WITH THE OWNER AND APPROPRIATE UTILITY COMPANY.
- ANY EXISTING WORK OR PROPERTY DAMAGED OR DISRUPTED BY CONSTRUCTION/DEMOLITION ACTIVITIES SHALL BE REPLACED OR REPAIRED TO MATCH ORIGINAL EXISTING CONDITIONS BY THE CONTRACTOR AT NO ADDITIONAL COST TO THE OWNER.
- THE CONTRACTOR SHALL VERIFY LOCATION OF ALL EXISTING UTILITIES. CALL DIG SAFE AT LEAST 72 HOURS PRIOR TO THE COMMENCEMENT OF ANY DEMOLITION/CONSTRUCTION ACTIVITIES.
- SAWCUT AND REMOVE PAVEMENT ONE FOOT OFF PROPOSED EDGE OF PAVEMENT OR EXISTING CURB LINE IN ALL AREAS WHERE PAVEMENT TO BE REMOVED ABUTS EXISTING PAVEMENT OR CONCRETE TO REMAIN.
- IT IS THE CONTRACTOR'S RESPONSIBILITY TO FAMILIARIZE THEMSELVES WITH THE CONDITIONS OF ALL OF THE PERMIT APPROVALS.
- THE CONTRACTOR SHALL OBTAIN AND PAY FOR ADDITIONAL PERMITS, NOTICES AND FEES NECESSARY TO COMPLETE THE WORK AND ARRANGE FOR AND PAY FOR NECESSARY INSPECTIONS AND APPROVALS FROM THE AUTHORITIES HAVING JURISDICTION.
- THE CONTRACTOR SHALL BE RESPONSIBLE FOR ALL DEMOLITION AND OFF-SITE DISPOSAL OF MATERIALS REQUIRED TO COMPLETE THE WORK, EXCEPT FOR WORK NOTED TO BE COMPLETED BY OTHERS.
- UTILITIES SHALL BE TERMINATED AT THE MAIN LINE PER UTILITY COMPANY STANDARDS. THE CONTRACTOR SHALL REMOVE ALL ABANDONED UTILITIES LOCATED WITHIN THE LIMITS OF WORK. CONTRACTOR SHALL VERIFY ORIGIN OF ALL DRAINS AND UTILITIES PRIOR TO REMOVAL/TERMINATION TO DETERMINE IF DRAINS OR UTILITY IS ACTIVE AND SERVICES ANY ON OR OFF-SITE STRUCTURE TO REMAIN. CONTRACTOR SHALL NOTIFY ENGINEER IMMEDIATELY OF ANY SUCH UTILITY FOUND AND SHALL MAINTAIN THESE UTILITIES UNTIL PERMANENT SOLUTION IS IN PLACE.
- PAVEMENT REMOVAL LIMITS ARE SHOWN FOR CONTRACTOR'S CONVENIENCE. ADDITIONAL PAVEMENT REMOVAL MAY BE REQUIRED DEPENDING ON THE CONTRACTOR'S OPERATION. CONTRACTOR TO VERIFY FULL LIMITS OF PAVEMENT REMOVAL PRIOR TO BID.
- THE CONTRACTOR SHALL REMOVE AND DISPOSE OF ALL EXISTING STRUCTURES, CONCRETE PADS, UTILITIES AND PAVEMENT WITHIN THE WORK LIMITS SHOWN UNLESS SPECIFICALLY IDENTIFIED TO REMAIN. ITEMS TO BE REMOVED INCLUDE BUT ARE NOT LIMITED TO: CONCRETE, PAVEMENT, CURBS, LIGHTING, MANHOLES, CATCH BASINS, UNDER GROUND PIPING, POLES, STAIRS, SIGNS, FENCES, RAMPS, WALLS, BOLLARDS, RAILROAD TRACKS, BUILDING SLABS, FOUNDATION, TREES AND LANDSCAPING.
- COORDINATE ALL WORK WITHIN THE PUBLIC RIGHT OF WAYS WITH THE CITY OF PORTLAND AND MEDOT.
- REMOVE TREES AND BRUSH AS REQUIRED FOR COMPLETION OF WORK. CONTRACTOR SHALL GRUB AND REMOVE ALL STUMPS WITHIN LIMITS OF WORK AND DISPOSE OF OFF SITE IN ACCORDANCE WITH FEDERAL, STATE, AND LOCAL LAWS AND REGULATIONS.
- CONTRACTOR SHALL PROTECT ALL PROPERTY MONUMENTATION THROUGHOUT DEMOLITION AND CONSTRUCTION OPERATIONS. SHOULD ANY MONUMENTATION BE DISTURBED BY THE CONTRACTOR, HE SHALL EMPLOY A LICENSED SURVEYOR TO REPLACE IT.
- PROVIDE INLET PROTECTION BARRIERS AT ALL CATCH BASINS WITHIN CONSTRUCTION LIMITS AND MAINTAIN FOR THE DURATION OF THE PROJECT. INLET PROTECTION BARRIERS SHALL BE "HIGH FLOW SILT SACK" BY ACF ENVIRONMENTAL OR APPROVED EQUAL. INSPECT BARRIERS AFTER EACH RAIN OF 0.50 INCHES OR GREATER. CONTRACTOR SHALL COMPLETE A MAINTENANCE INSPECTION REPORT AFTER EACH INSPECTION. SEDIMENT DEPOSITS SHALL BE REMOVED AFTER EACH STORM EVENT OR MORE OFTEN IF THE FABRIC BECOMES CLOGGED.
- THE CONTRACTOR SHALL PHASE DEMOLITION AND CONSTRUCTION AS REQUIRED TO PROVIDE CONTINUOUS SERVICE TO EXISTING BUSINESSES AND HOMES THROUGHOUT THE CONSTRUCTION PERIOD. EXISTING BUSINESS AND HOME SERVICES INCLUDE, BUT ARE NOT LIMITED TO ELECTRICAL, COMMUNICATION, FIRE PROTECTION, DOMESTIC WATER AND SEWER SERVICES. TEMPORARY SERVICES, IF REQUIRED, SHALL COMPLY WITH ALL FEDERAL, STATE, LOCAL AND UTILITY COMPANY STANDARDS. CONTRACTOR SHALL PROVIDE DETAILED CONSTRUCTION SCHEDULE TO OWNER PRIOR TO ANY DEMOLITION/CONSTRUCTION ACTIVITIES.
- SEE ROADWAY IMPROVEMENT PLANS FOR OFF-SITE DEMOLITION.
- EROSION CONTROL MEASURES SHALL BE INSTALLED PRIOR TO THE START OF ANY CLEARING OR DEMOLITION ACTIVITIES.
- THE CONTRACTOR SHALL PAY ALL COSTS NECESSARY FOR TEMPORARY PARTITIONING, BARRICADING, FENCING, SECURITY AND SAFETY DEVICES REQUIRED FOR THE MAINTENANCE OF A CLEAN AND SAFE CONSTRUCTION SITE.
- SAWCUT AND REMOVE PAVEMENT AND CONSTRUCT PAVEMENT TRENCH PATCH FOR ALL UTILITIES TO BE REMOVED AND PROPOSED UTILITIES LOCATED IN EXISTING PAVEMENT AREAS TO REMAIN.



LEGEND

- PROPERTY LINE
- - - EDGE OF WETLAND
- - - EXISTING TREE LINE
- - - EXISTING FENCE
- - - EXISTING DRAINAGE
- - - EXISTING ELECTRIC/TELEPHONE/CABLE
- - - EXISTING OVERHEAD WIRE
- - - EXISTING WATER
- - - EXISTING SEWER
- - - EXISTING GAS
- - - EXISTING CONTOUR
- - - EXISTING 10' CONTOUR
- - - SAWCUT LIMIT
- PROPOSED BUILDING LOCATION
- EXISTING CONCRETE/ BITUMINOUS SIDEWALK
- EXISTING SIGN
- EXISTING BOLLARD
- EXISTING TREE
- DECIDUOUS TREE
- EXISTING LIGHT
- UTILITY POLE & GUY WIRE
- LIGHT POLE (ONE ARM)
- LIGHT POLE (TWO ARMS)
- LIGHT POLE (FOUR ARMS)
- FIRE HYDRANT
- GAS GATE VALVE
- WATER GATE VALVE
- WATER SHUTOFF VALVE
- CATCH BASIN
- DRAIN MANHOLE
- ELECTRIC MANHOLE
- TELEPHONE MANHOLE
- WATER MANHOLE
- EXISTING SEWER MANHOLE
- EXISTING DRAIN MANHOLE
- SQUARE MANHOLE
- LANDSCAPED AREA
- ACCESSIBLE PARKING SPACE
- TRAFFIC FLOW DIRECTION ARROW
- DRAINAGE PIPE INDICATOR
- CHAINLINK FENCE
- OVERHANG
- VERTICAL BITUMINOUS CURB
- VERTICAL CONCRETE CURB
- VERTICAL GRANITE CURB
- CONCRETE
- RETAINING
- TYP.
- FF
- EP
- SWL
- SYL
- (TBR)
- PAVEMENT TO BE RECLAIMED/REMOVED
- SIDEWALK TO BE REPLACED/REMOVED

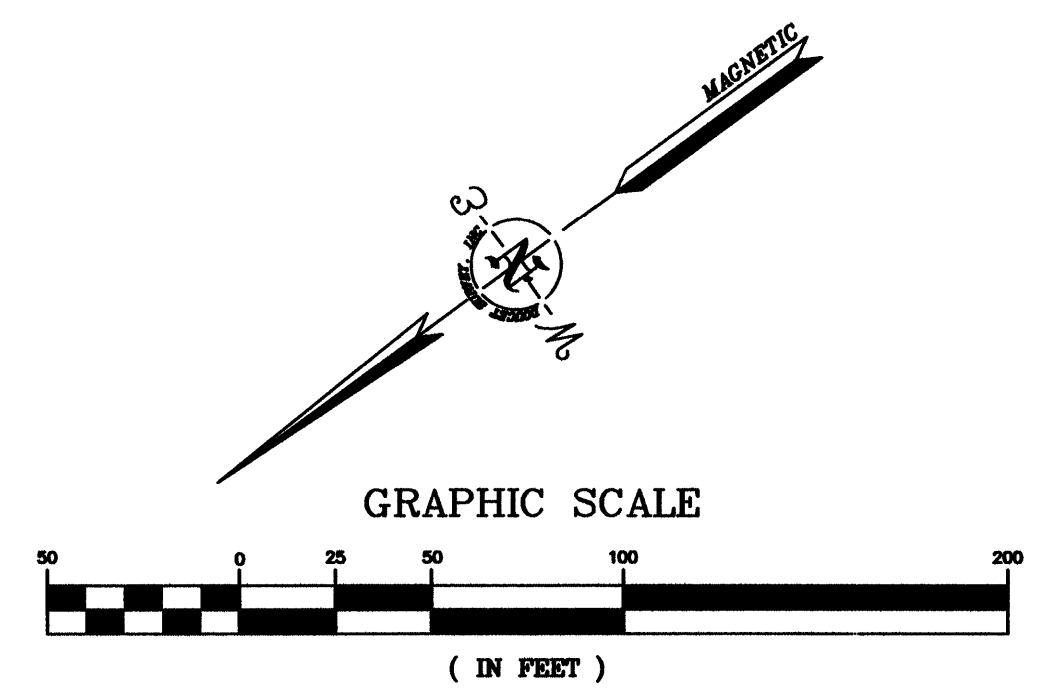
No.	Description	Appd	Date
7.	ISSUED FOR APPROVAL	BLM	7/8/08
6.	REVISED SITE PARKING	BLM	6/3/08
5.	REVISED FOR DEP SUBMISSION	BLM	5/22/08
4.	REVISED PER STAFF COMMENTS	BLM	5/15/08
3.	REVISED PER STAFF COMMENTS	BLM	4/30/08
2.	REVISED PER STAFF COMMENTS	BLM	4/28/08
1.	REVISED PER PRELIMINARY COMMENTS	BLM	4/17/08



DATE: MARCH 3, 2008
 SCALE: AS SHOWN
 DESIGNED BY: GY/BLM
 DRAWN BY: SAM
 APPROVED BY: BLM
 PROJECT NO.: 2256
 FILE NO.: 2256-SITE.dwg

**WESTGATE PLAZA
 CONGRESS STREET
 PORTLAND, MAINE**

**Appledore
 Engineering Inc.**
 Pease International Tradeport
 15 Rye Street, Suite 305
 Portsmouth, New Hampshire 03801
 (603) 432-8616
 aei@appledoreeng.com



DEMOLITION PLAN