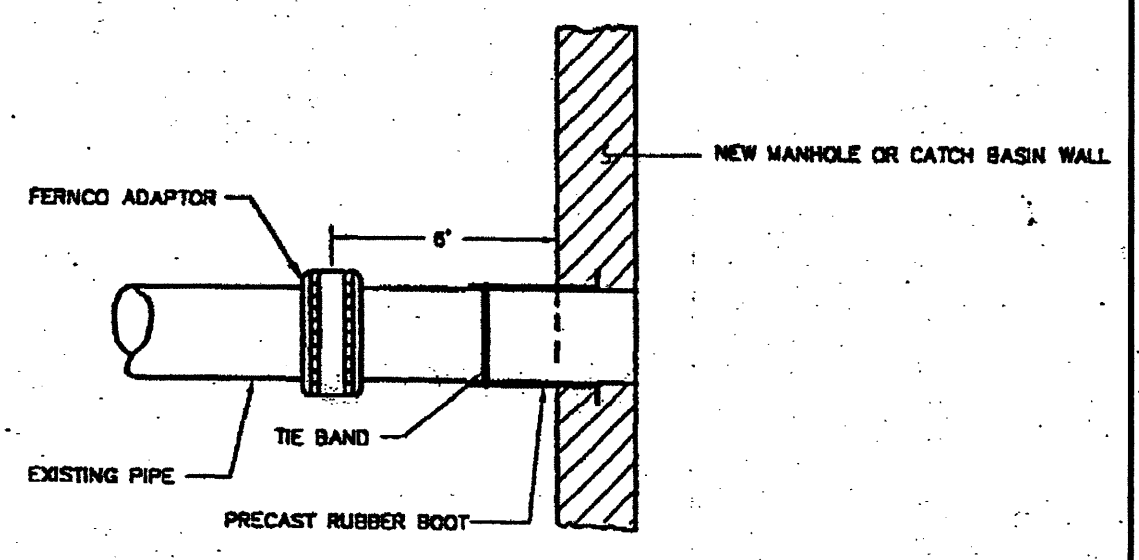
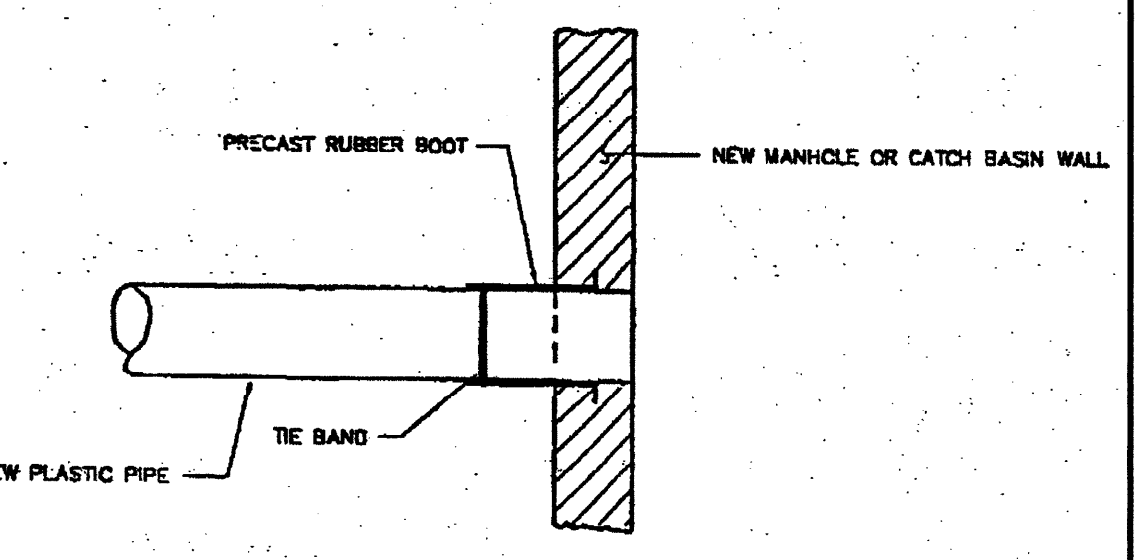


NOTE: REMOVE WATERPROOFING FROM STRUCTURE BEFORE APPLYING MORTAR. WATERPROOF AGAIN AFTER MORTAR HAS SET.



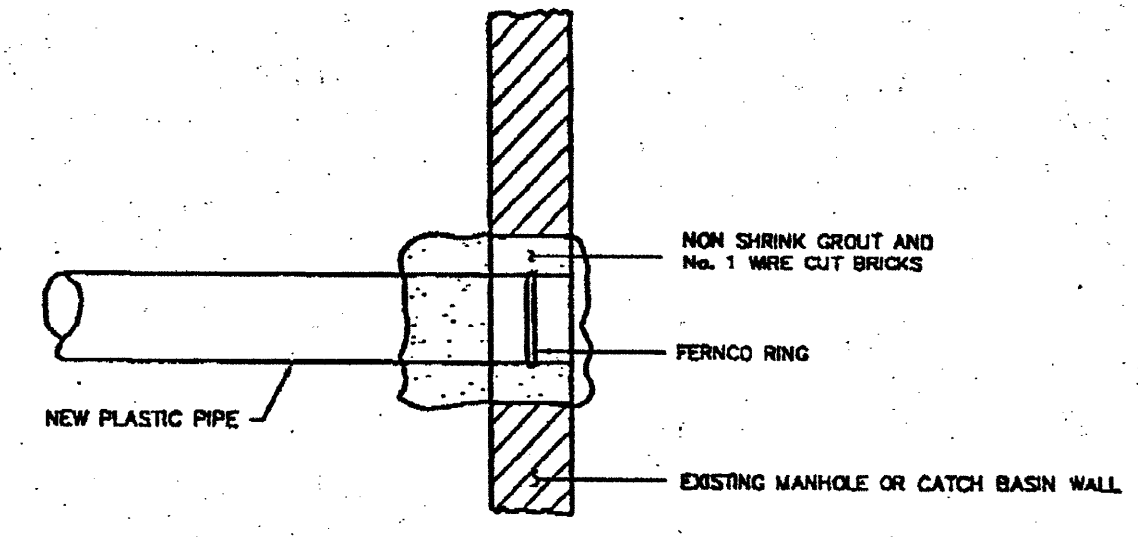
METHOD 1 - EXISTING PIPE INTO NEW STRUCTURE



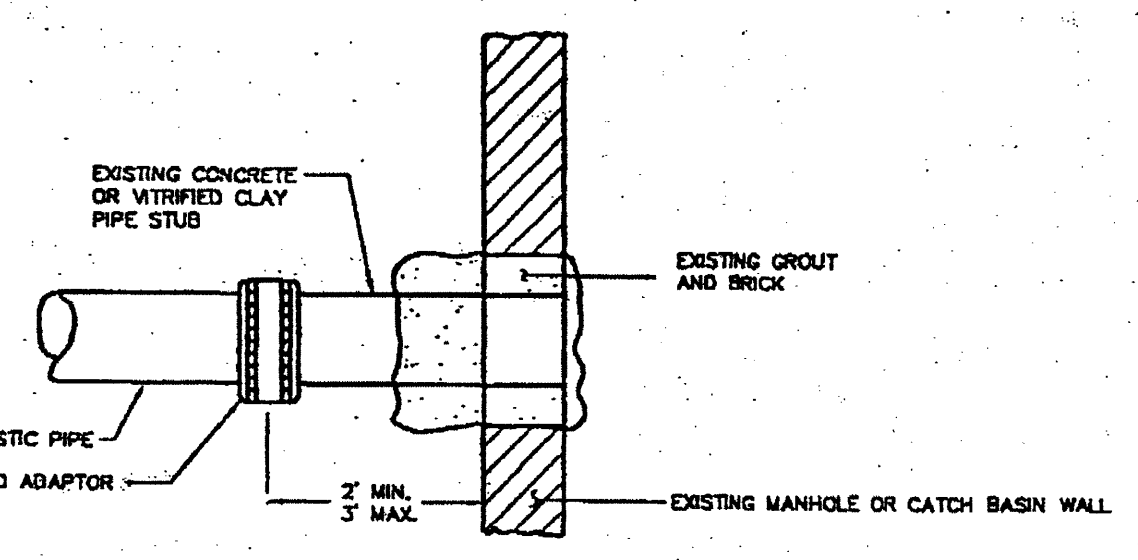
METHOD 2 - NEW CONSTRUCTION

FIGURE II - 16
PIPE CONNECTION DETAILS

NOTE: EXISTING MANHOLE OR CATCH BASIN SHALL BE CORE DRILLED FOR PIPE INSTALLATION



METHOD 3 - NEW PIPE INTO EXISTING STRUCTURE



METHOD 4 - NEW PIPE TO EXISTING STUB

FIGURE II - 16 (Continued)
PIPE CONNECTION DETAILS

1. LOCATIONS AND ELEVATIONS OF STUBS SHOWN ON THE PLANS ARE TO BE CONSIDERED AS APPROXIMATE AND MAY BE ADJUSTED AS DIRECTED TO SUIT FIELD CONDITIONS.
2. HOUSE CONNECTIONS AND CATCH BASIN CONNECTIONS TO THE MAIN LINE OF THE SEWER SHALL CONSIST OF AN APPROPRIATE "Y" BRANCH CONNECTION AS SHOWN ON THE PLANS, OR AS DIRECTED. ACTUAL "Y" LOCATIONS FOR HOUSE CONNECTIONS AND CATCH BASIN CONNECTIONS SHALL BE DETERMINED DURING CONSTRUCTION. THE CONTRACTOR SHALL KEEP A COMPLETE RECORD OF "Y" LOCATIONS WHICH SHALL BE GIVEN TO THE CITY OF PORTLAND UPON COMPLETION OF THE CONTRACT.

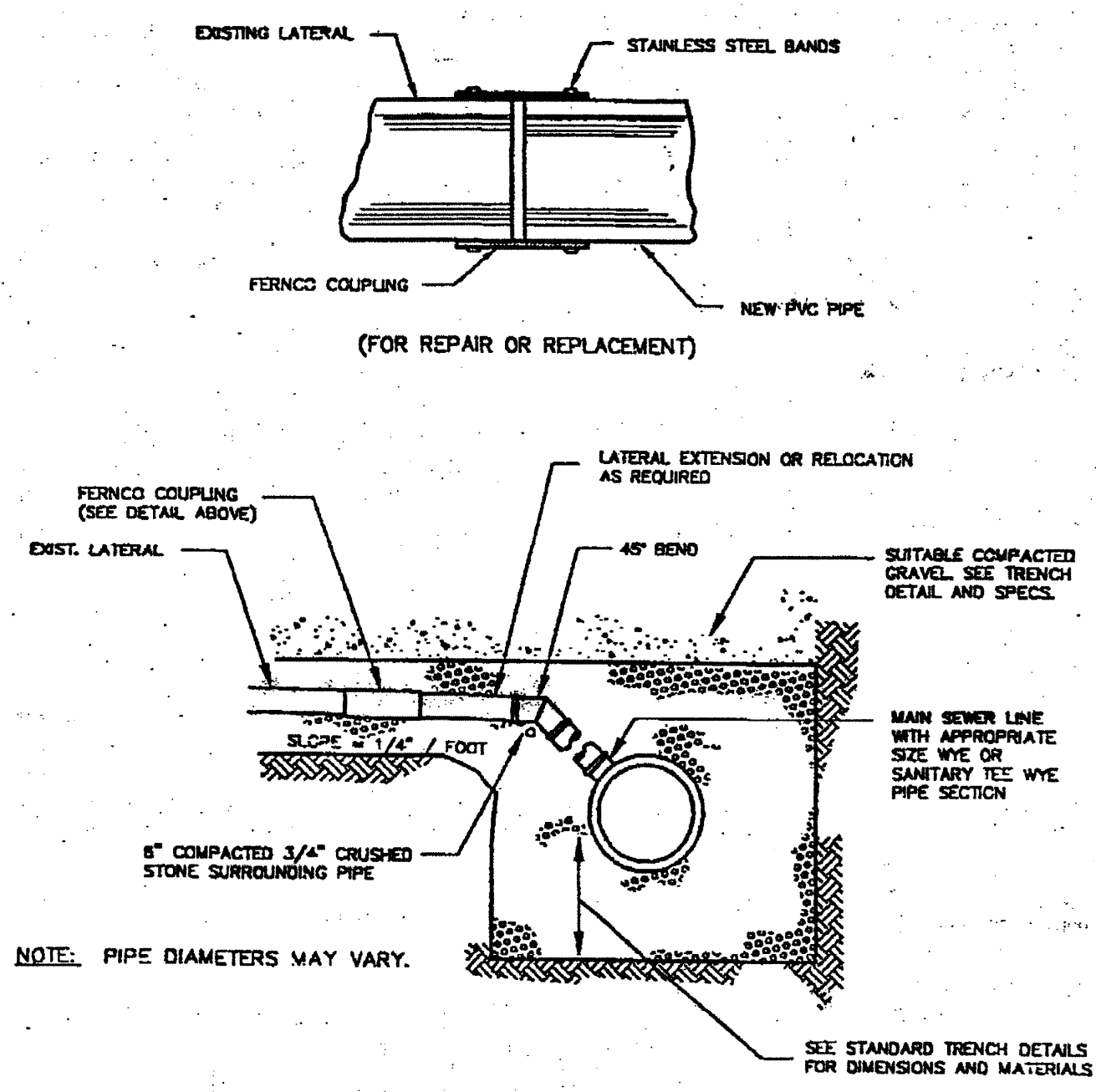


FIGURE II - 18
TYPICAL EXISTING LATERAL CONNECTION DETAIL

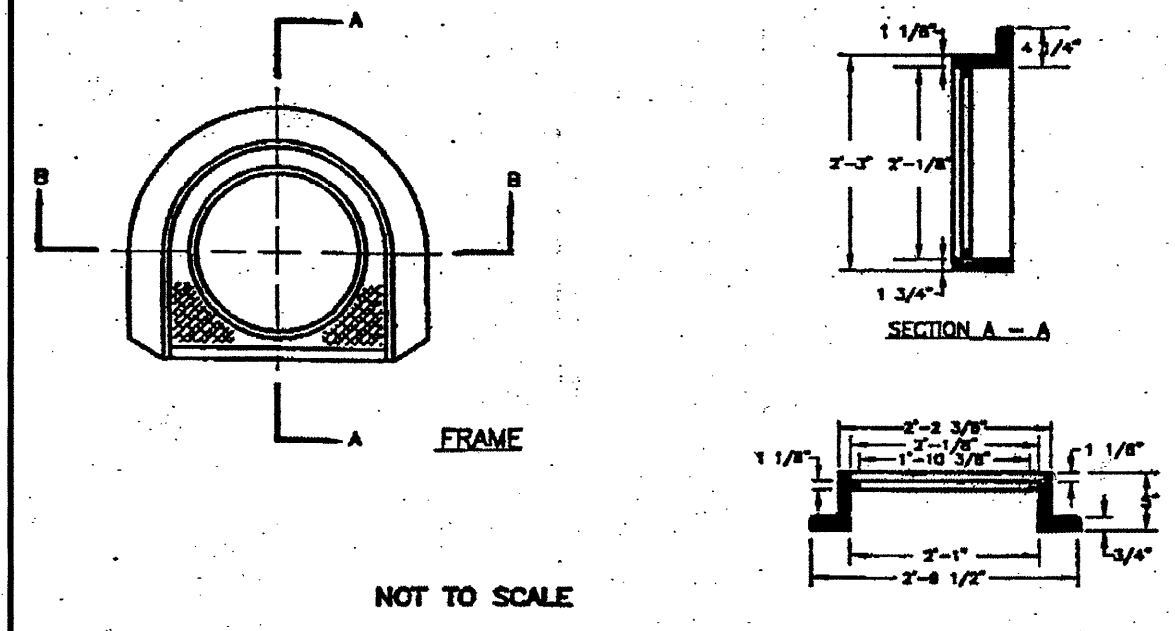
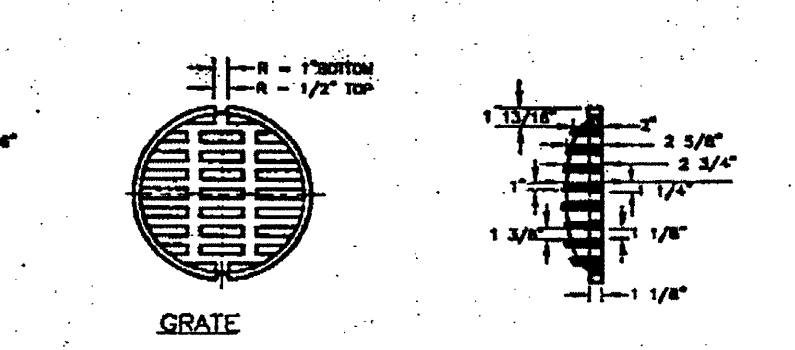
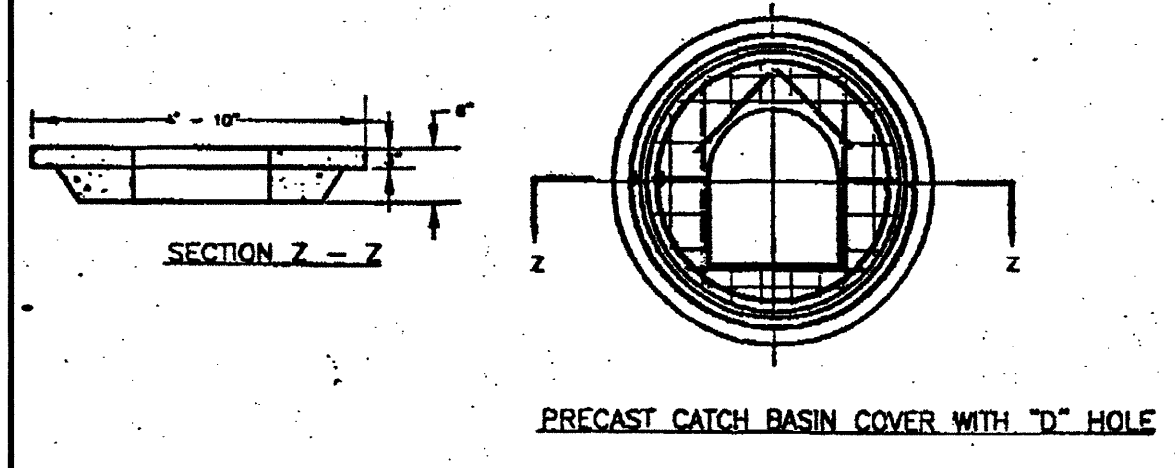


FIGURE II - 7
CATCH BASIN FRAME AND GRATE

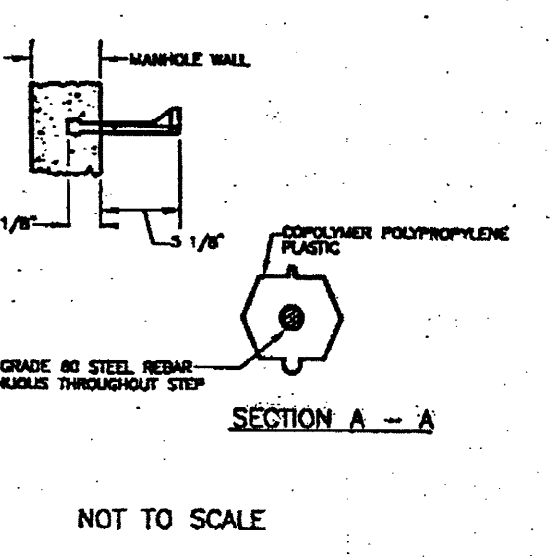
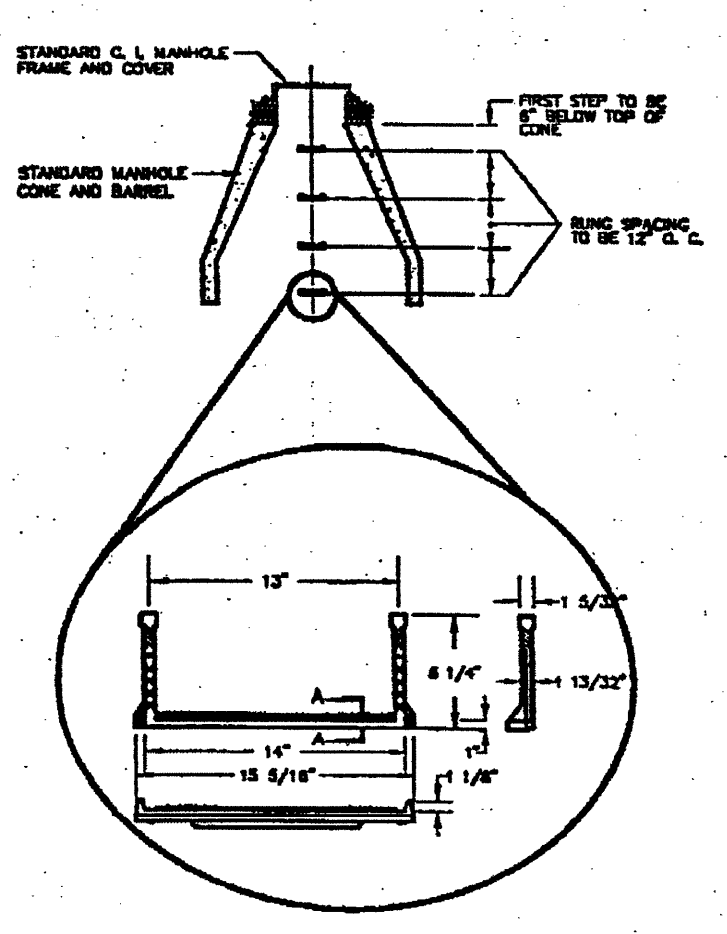


FIGURE II - 4
PLASTIC MANHOLE STEPS

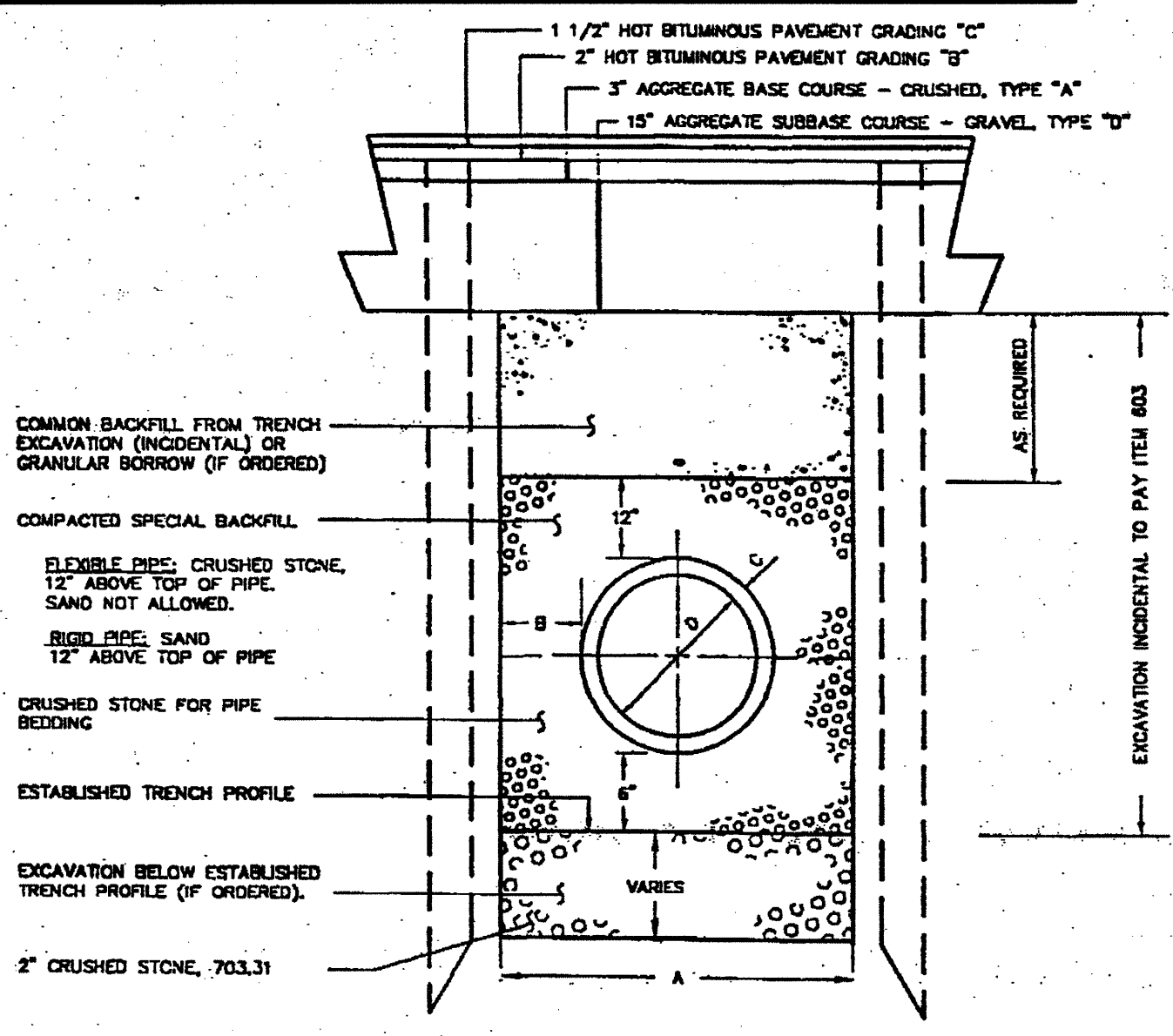


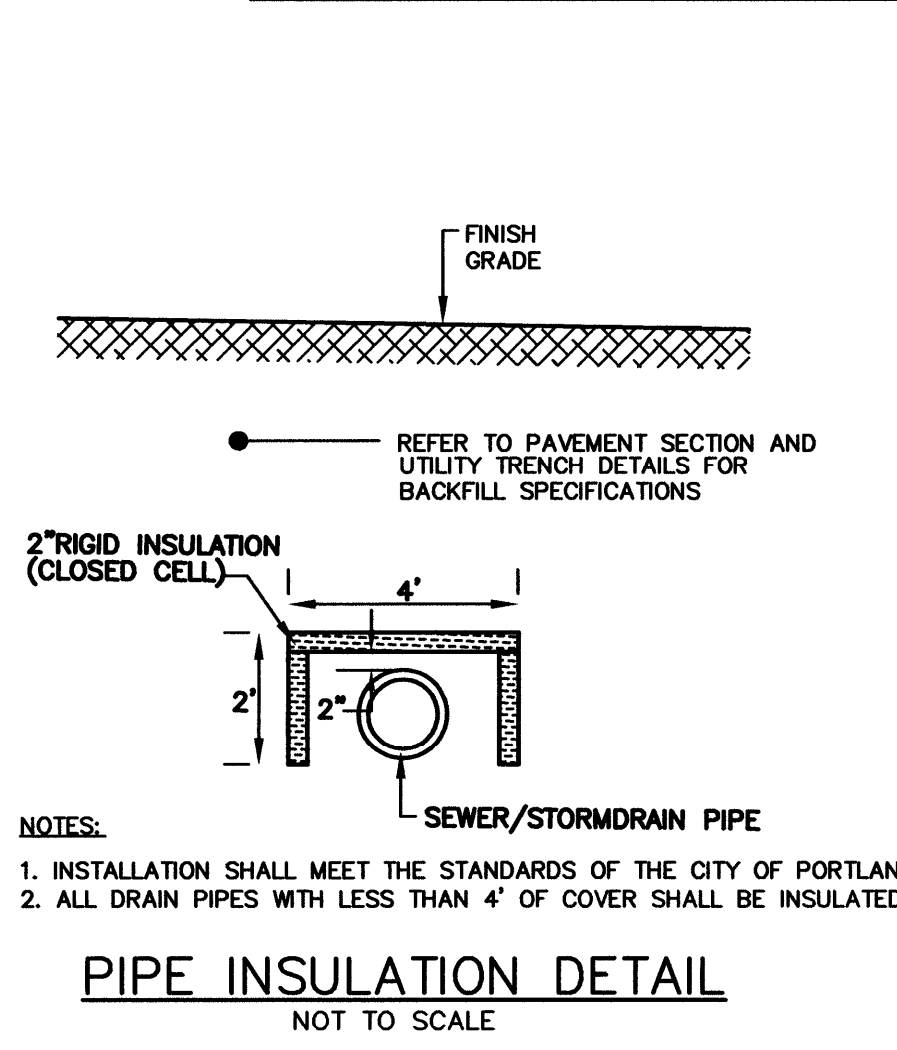
FIGURE II - 12
TYPICAL PIPE INSTALLATION DETAIL

TABLE OF DIMENSIONS OF PIPE REINFORCED CONCRETE

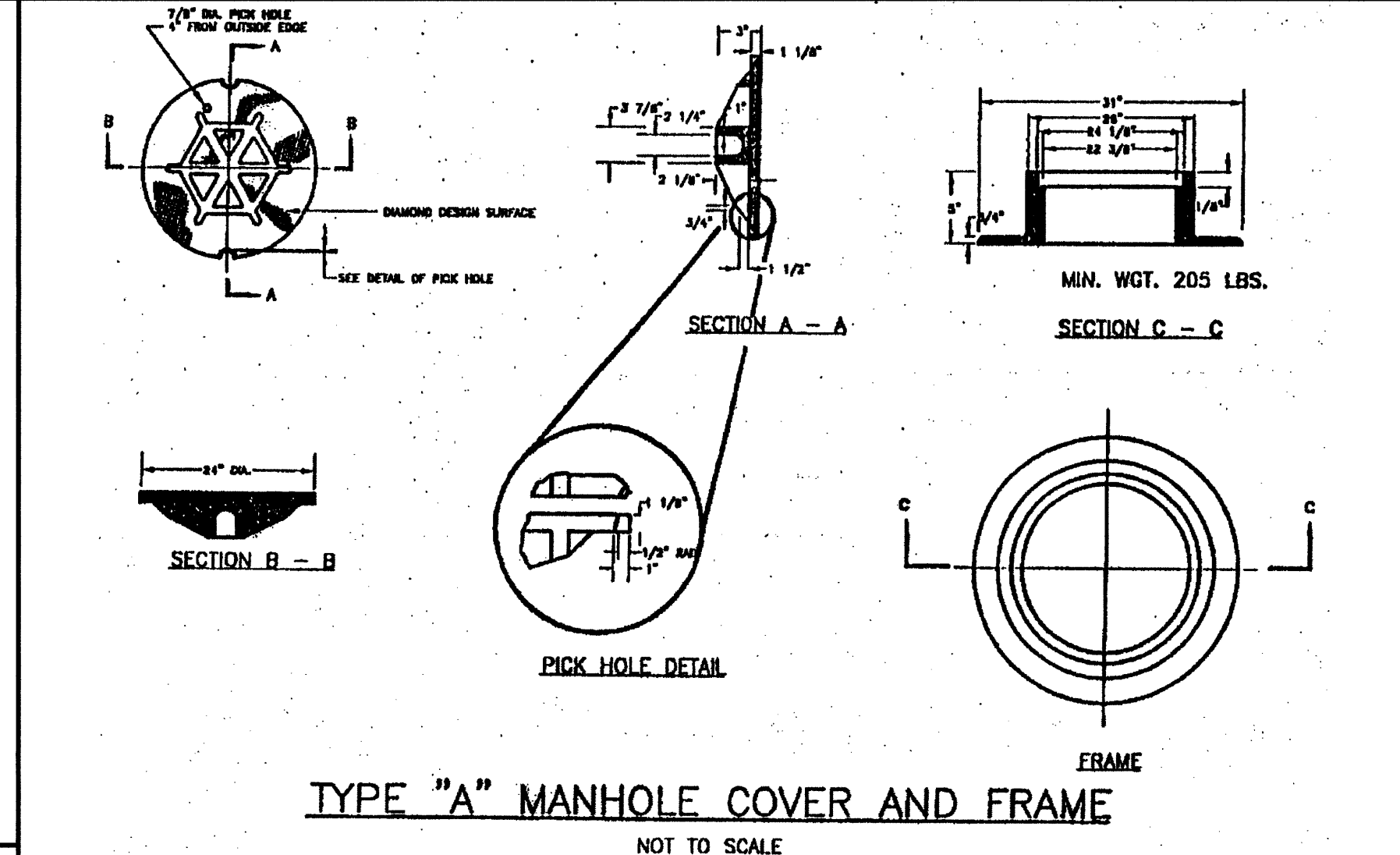
INCH	MM	INCH	MM	INCH	MM	INCH	MM
12	305	12	305	12	305	12	305
15	381	15	381	15	381	15	381
18	457	18	457	18	457	18	457
21	533	21	533	21	533	21	533
24	609	24	609	24	609	24	609
27	685	27	685	27	685	27	685
30	762	30	762	30	762	30	762
33	838	33	838	33	838	33	838
36	914	36	914	36	914	36	914
39	990	39	990	39	990	39	990
42	1066	42	1066	42	1066	42	1066
45	1142	45	1142	45	1142	45	1142
48	1218	48	1218	48	1218	48	1218
51	1294	51	1294	51	1294	51	1294
54	1370	54	1370	54	1370	54	1370
57	1446	57	1446	57	1446	57	1446
60	1522	60	1522	60	1522	60	1522

TABLE OF DIMENSIONS OF PIPE

INCH	MM	INCH	MM	INCH	MM	INCH	MM
12	305	12	305	12	305	12	305
15	381	15	381	15	381	15	381
18	457	18	457	18	457	18	457
21	533	21	533	21	533	21	533
24	609	24	609	24	609	24	609
27	685	27	685	27	685	27	685
30	762	30	762	30	762	30	762
33	838	33	838	33	838	33	838
36	914	36	914	36	914	36	914
39	990	39	990	39	990	39	990
42	1066	42	1066	42	1066	42	1066
45	1142	45	1142	45	1142	45	1142
48	1218	48	1218	48	1218	48	1218
51	1294	51	1294	51	1294	51	1294
54	1370	54	1370	54	1370	54	1370
57	1446	57	1446	57	1446	57	1446
60	1522	60	1522	60	1522	60	1522



PIPE INSULATION DETAIL
NOT TO SCALE



TYPE "A" MANHOLE COVER AND FRAME
NOT TO SCALE

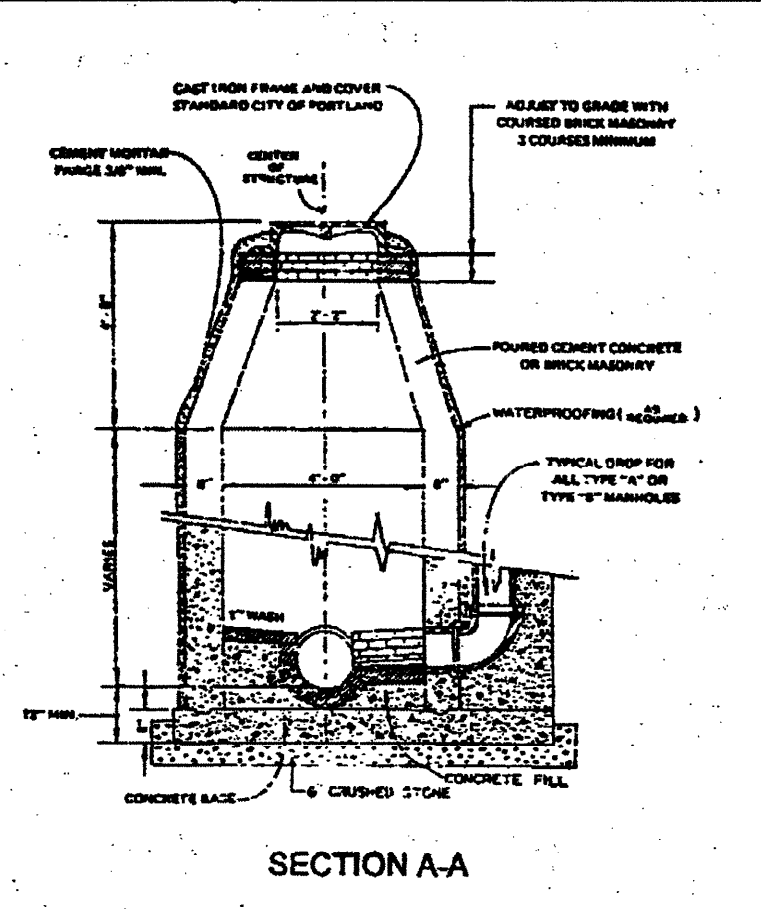
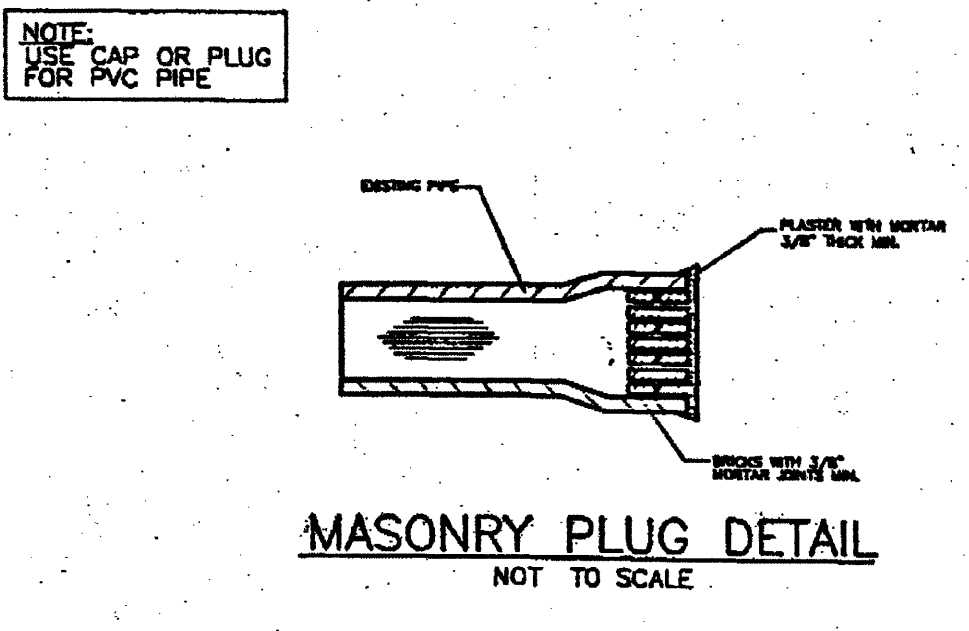
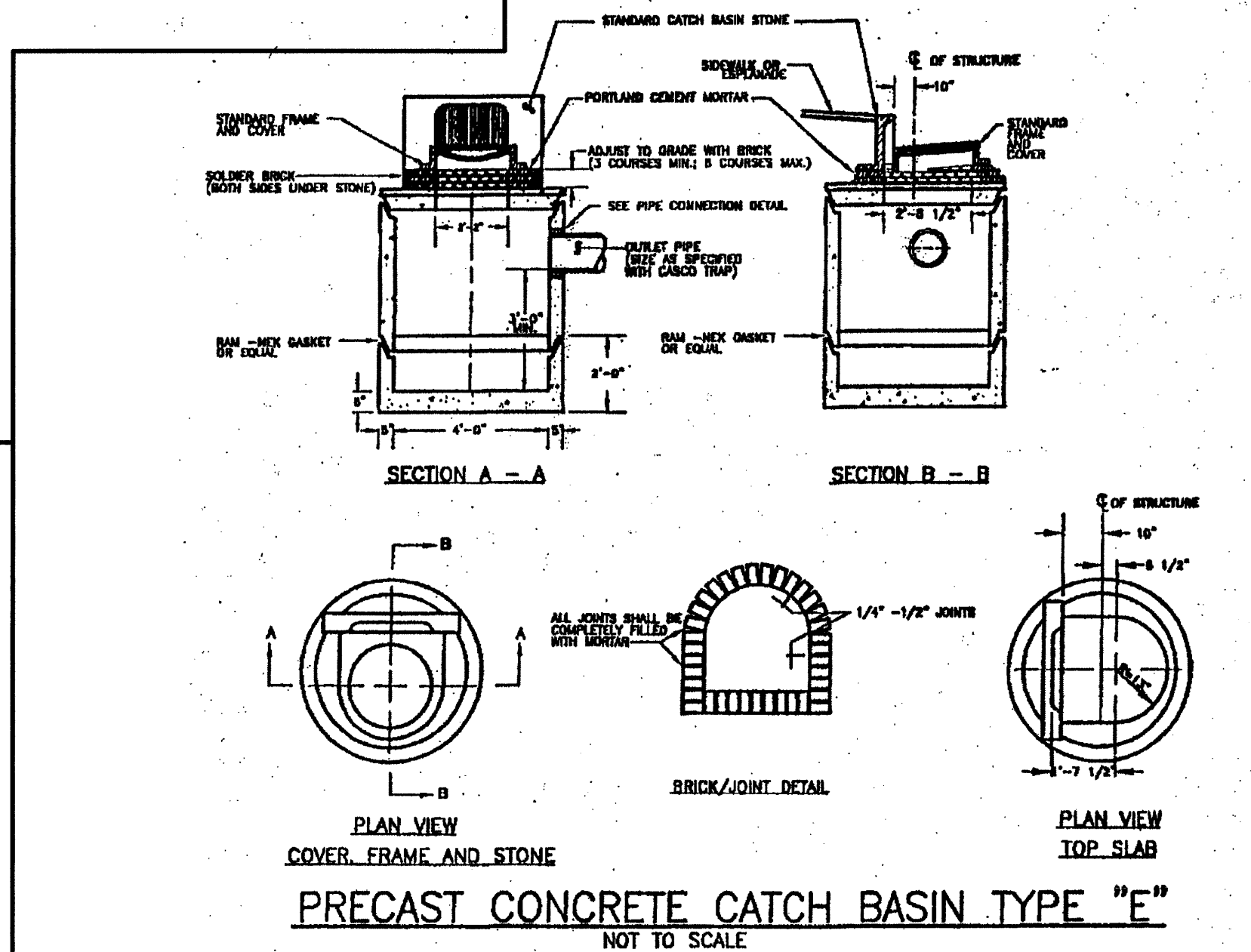


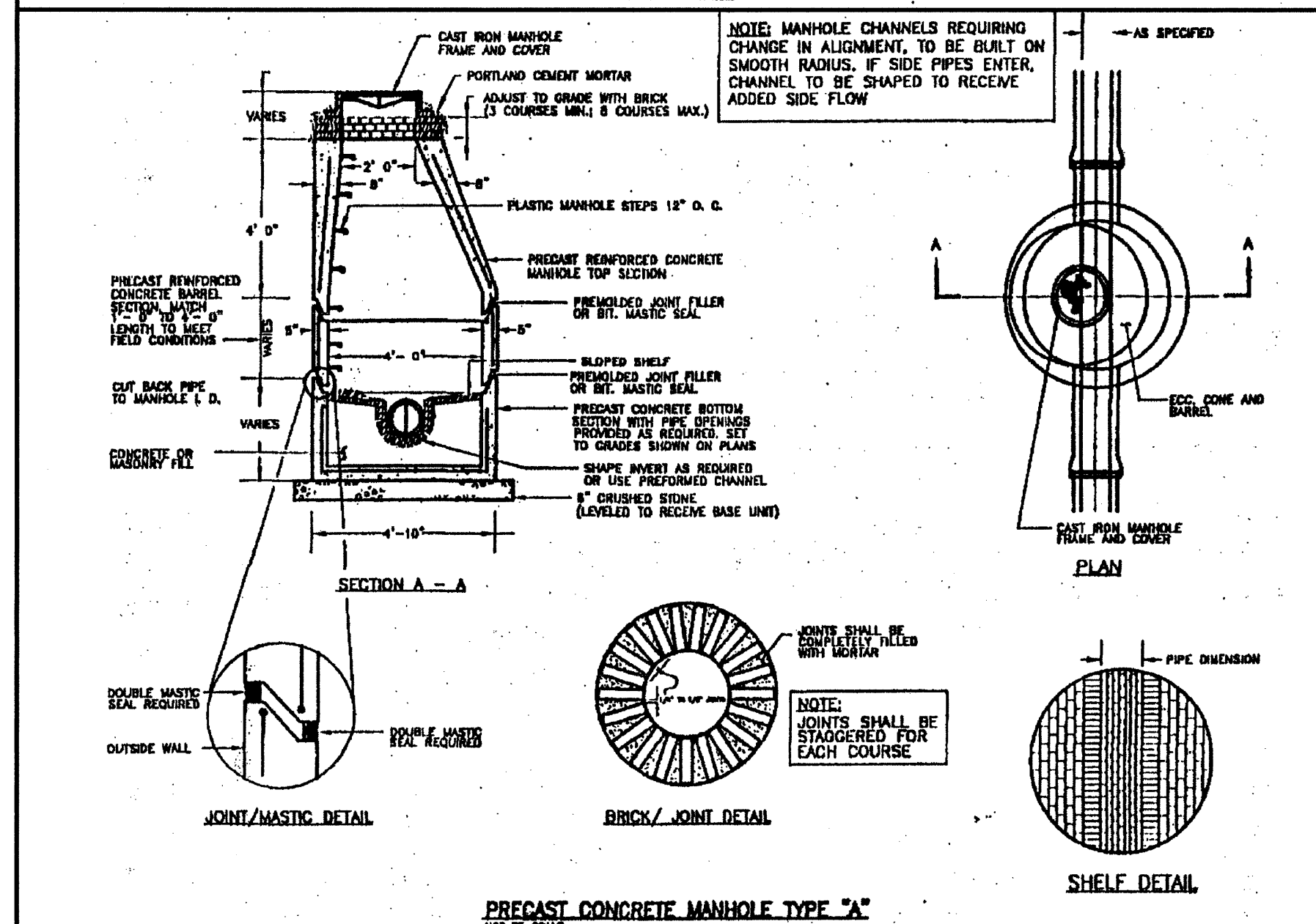
FIGURE II - 3
TYPE "B" MANHOLE



MASONRY PLUG DETAIL
NOT TO SCALE



PRECAST CONCRETE CATCH BASIN TYPE "E"
NOT TO SCALE



PRECAST CONCRETE MANHOLE TYPE "A"
NOT TO SCALE

REVISIONS

No.	Description	Appd	Date
1.	ISSUED FOR APPROVAL	BLM	7/8/08
2.	REVISED PER STAFF COMMENTS	BLM	4/30/08

STATE OF MAINE
Professional Engineer
Blaine Mezquita
9410
LICENSED
Professional Engineer
No. 2256
PROJECT NO. 2256-DETAILS.DWG
DATE: MARCH 3, 2008
SCALE: AS SHOWN
DESIGNED BY: BLM/GY
DRAWN BY: SAM
APPROVED BY: BLM
FILE NO. 2256-DETAILS.DWG

WESTGATE PLAZA
CONGRESS STREET
PORTLAND, ME

Appledore Engineering Inc.
Pease International Tradeport
15 Rye Street, Suite 305
Portsmouth, New Hampshire 03801
(603) 433-8818
ae@appledoreeng.com