

Table Of Dimensions And Weights

Round Equivalent (inches)	Inside Dimension (inches)	Span (inches)	Wall Thickness (inches)	C (inches)	D (inches)	Full Flow Water Area (Sq. Ft.)	Approx. Weight (lbs./ft.)
15	11	18	3	1.14	2.14	1.1	130
18	13.12	22	3.18	1.716	2.14	1.65	190
24	18	28.12	3.12	1.12	2.34	2.8	330
30	22.12	36.14	3.12	1.58	3	4.4	468
36	26.58	43.34	4	1.34	3.12	6.4	638
42	31.616	51.16	4.12	1.1516	3.12	8.8	878
48	36	58.12	5	2.14	3.12	11.4	1,110
54	40	65	5.12	2.58	5	14.3	1,375
60	45	73	6	2.1516	5	17.7	1,513
72	54	88	7	3.216	6	25.6	2,113

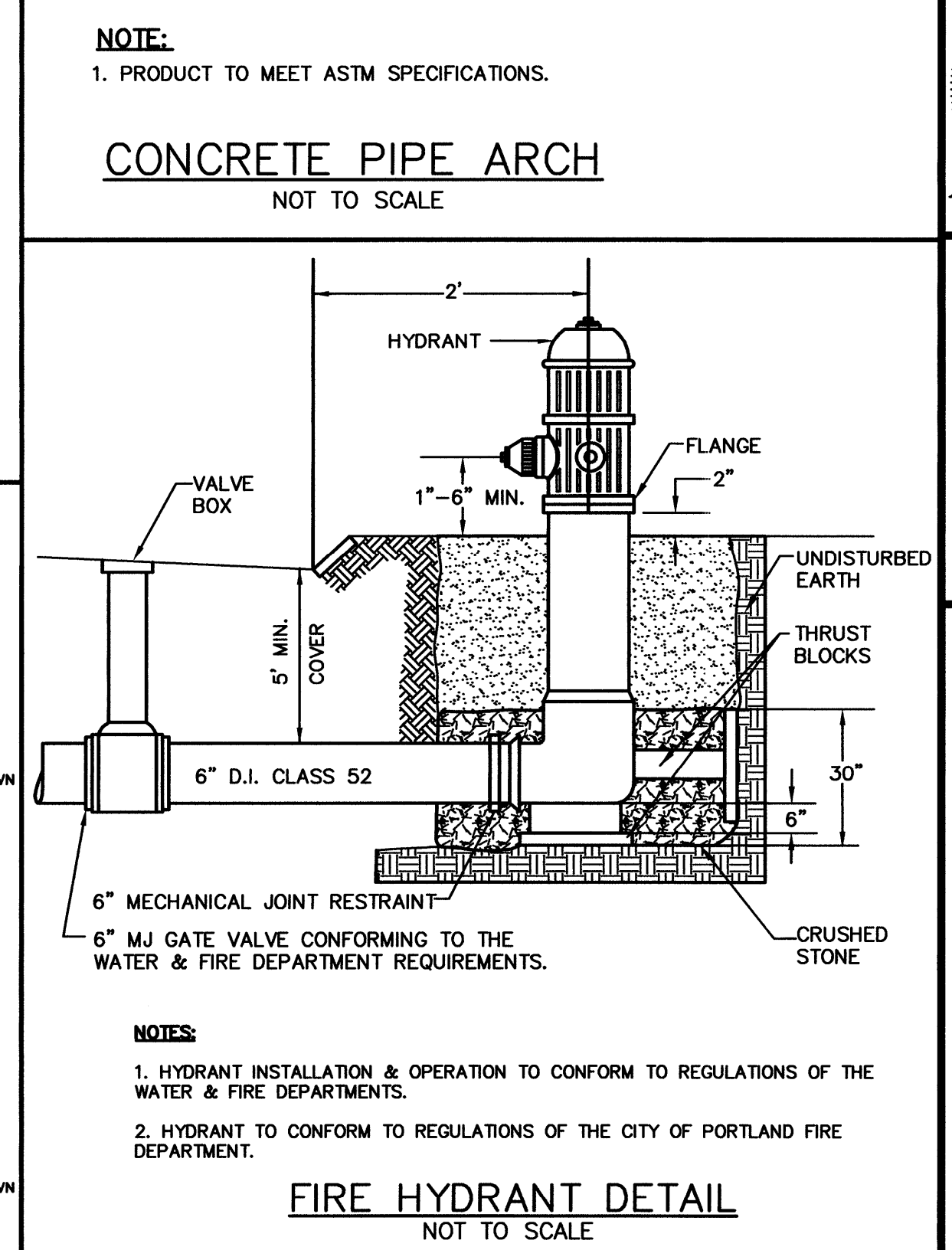
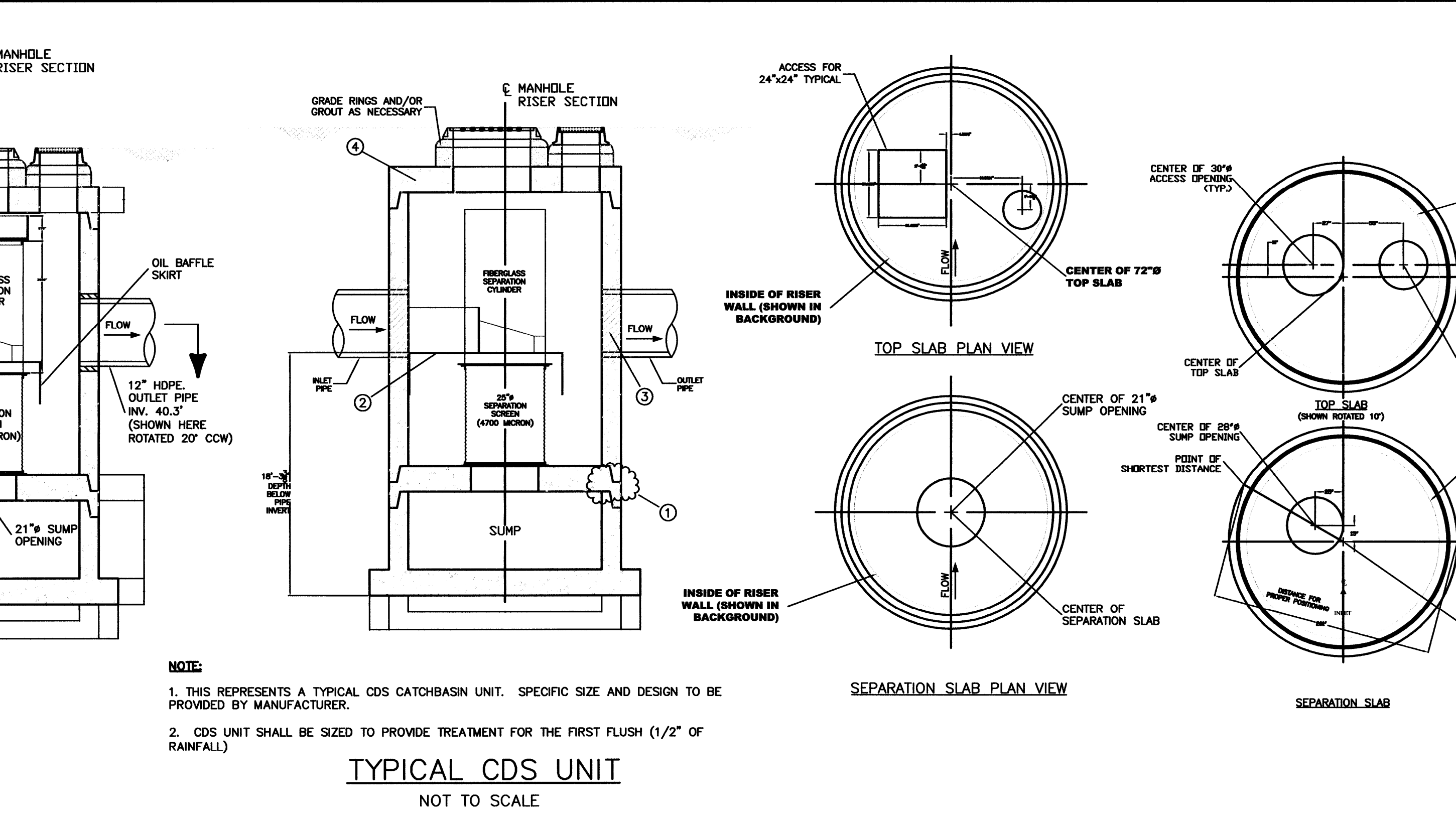
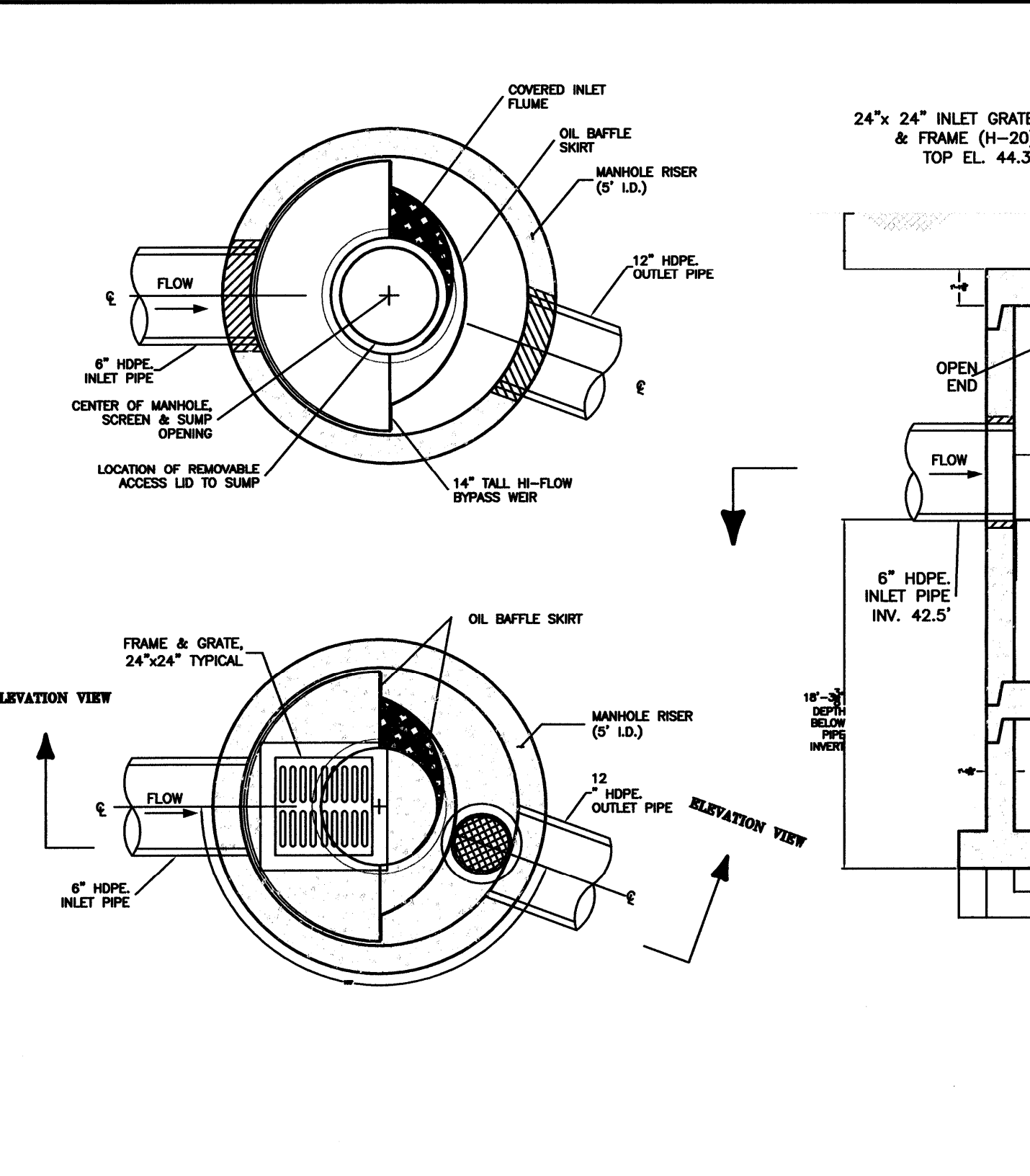
Pipe dimensions may vary depending upon equipment availability.

NOTE:
1. PRODUCT TO MEET ASTM SPECIFICATIONS.

CONCRETE PIPE ARCH
NOT TO SCALE

REVISIONS

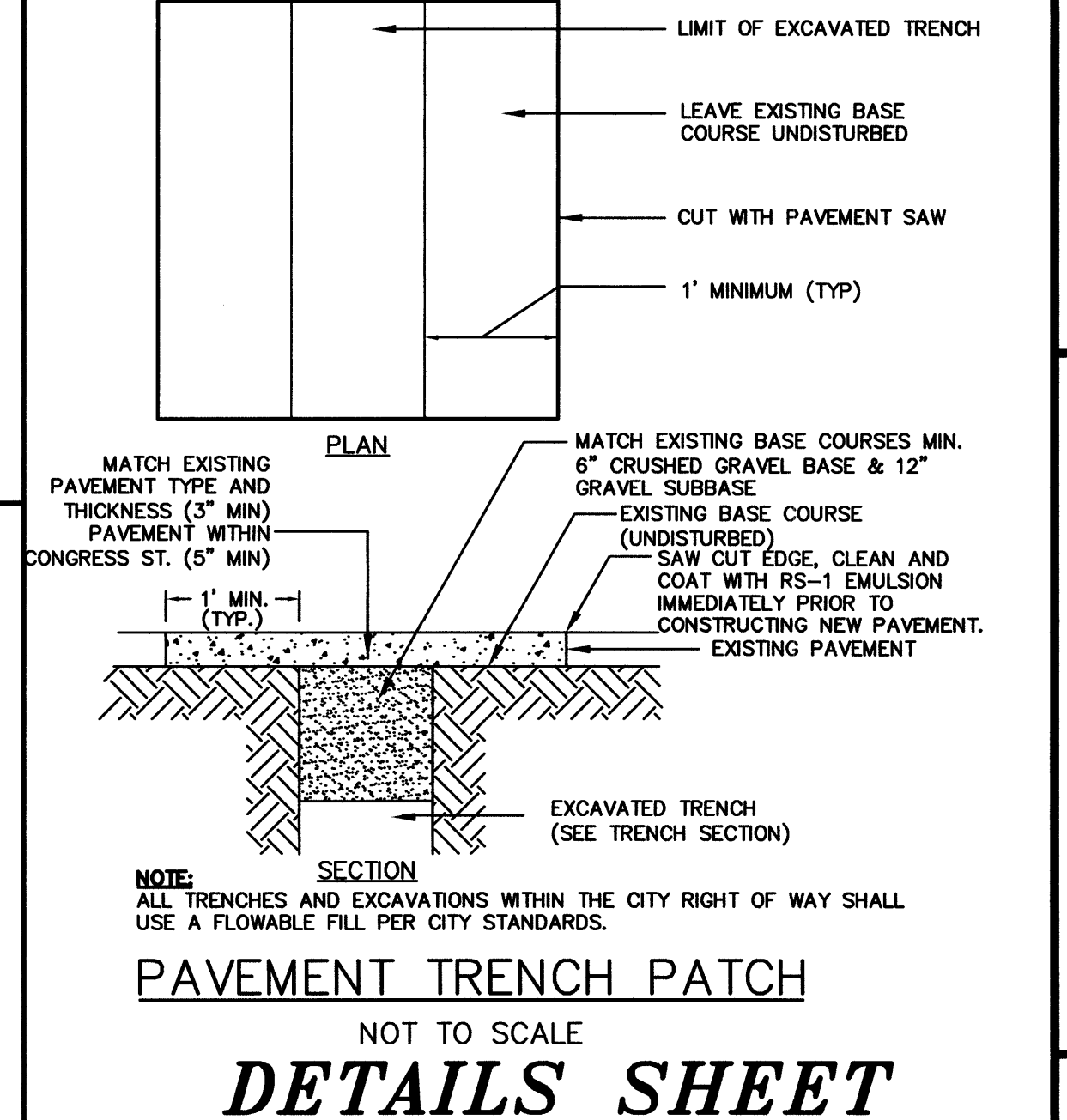
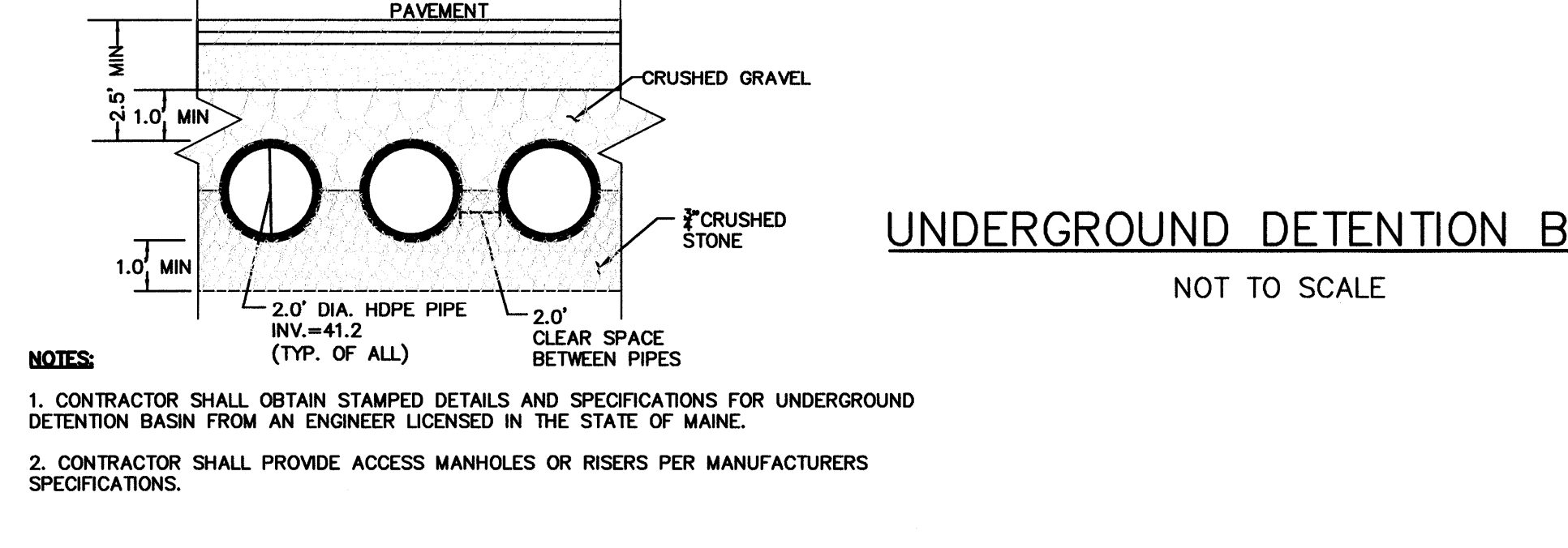
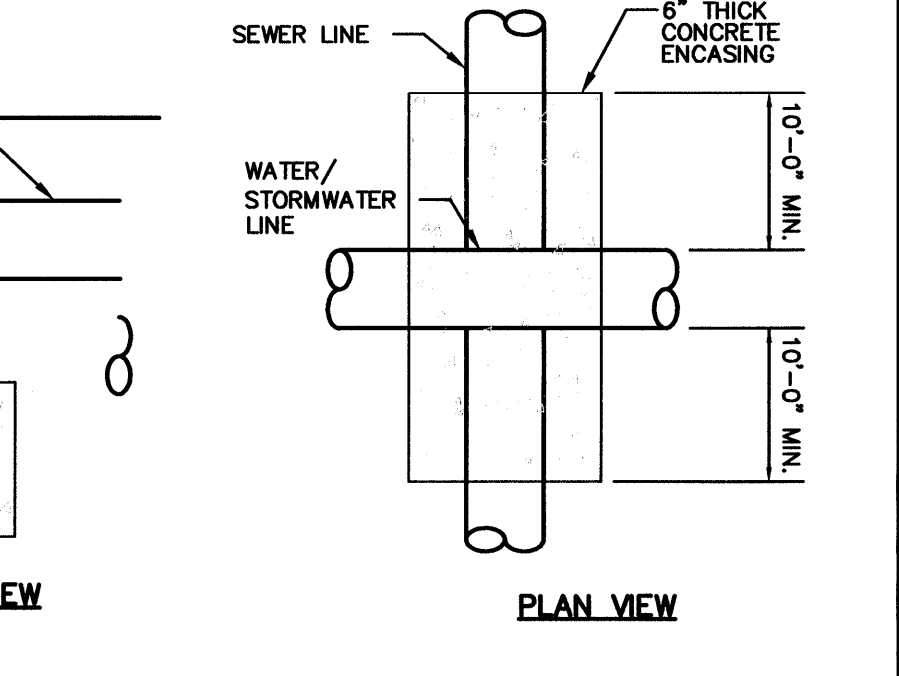
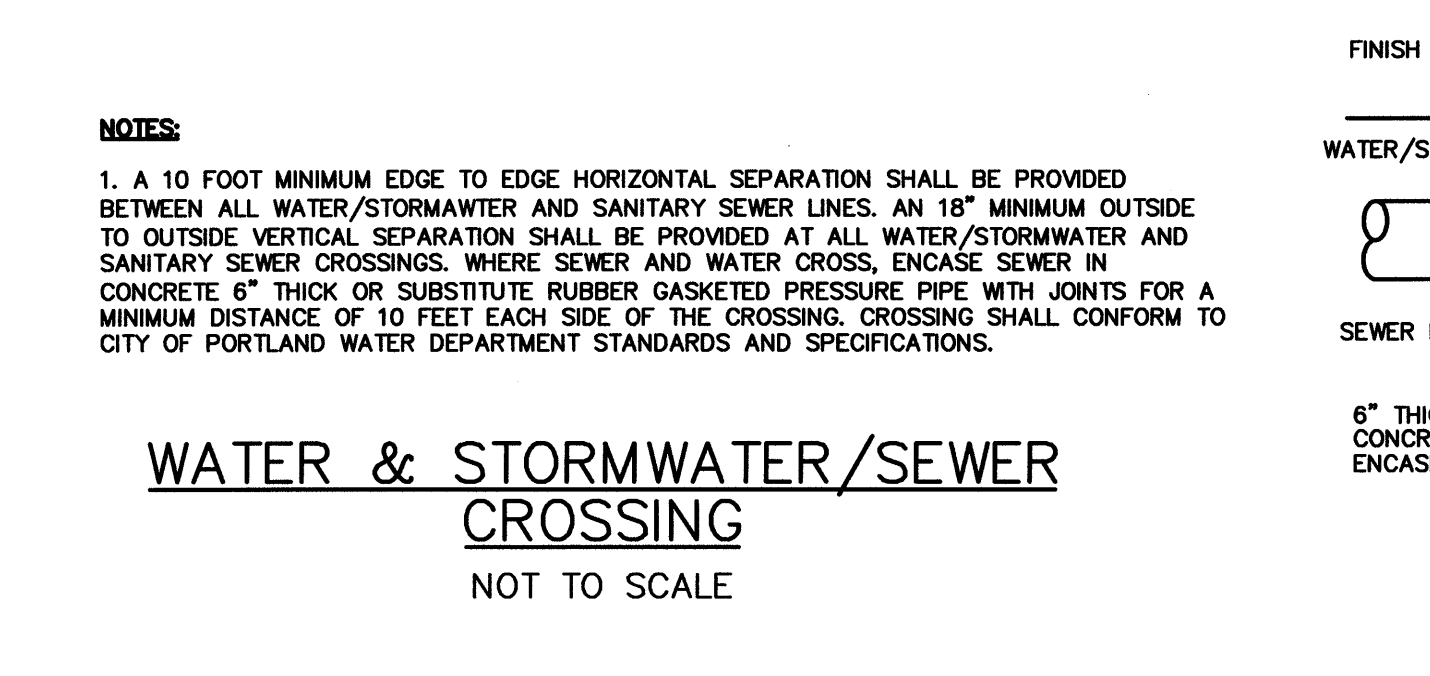
No.	Description	Date
4.	ISSUED FOR APPROVAL	7/8/08
3.	REVISED PER STAFF COMMENTS	5/15/08
2.	REVISED PER STAFF COMMENTS	4/30/08
1.	REVISED PER PRELIMINARY COMMENTS	4/17/08



STATE OF MAINE
BRADLEE MEZQUITA
REGISTERED PROFESSIONAL ENGINEER
NO. 10000

DATE: MARCH 3, 2008
SCALE: AS SHOWN
DESIGNED BY: BLM/GY
DRAWN BY: SAM
APPROVED BY: BLM
PROJECT NO.: 2256
FILE NO.: 2256-DETAILS.DWG

**WESTGATE PLAZA
CONGRESS STREET
PORTLAND, ME**



Appledore Engineering Inc.
Please International Tradeport
15 Rye Street, Suite 305
Portsmouth, New Hampshire 03801
(603) 433-8818
ae@appledoreeng.com

C-11