

NOTES:

1. A 10 FOOT MINIMUM EDGE TO EDGE HORIZONTAL SEPARATION SHALL BE PROVIDED BETWEEN ALL WATER/STORMWATER AND SANITARY SEWER LINES. AN 18" MINIMUM OUTSIDE TO OUTSIDE VERTICAL SEPARATION SHALL BE PROVIDED AT ALL WATER/STORMWATER AND SANITARY SEWER CROSSINGS. WHERE SEWER AND WATER CROSS, ENCASE SEWER IN CONCRETE 6" THICK OR SUBSTITUTE RUBBER CASKETS PRESSURE PIPE WITH JOINTS FOR A MINIMUM DISTANCE OF 10 FEET EACH SIDE OF THE CROSSING. CROSSING SHALL CONFORM TO CITY OF PORTLAND WATER DEPARTMENT STANDARDS AND SPECIFICATIONS.

WATER & STORMWATER/SEWER CROSSING

NOT TO SCALE

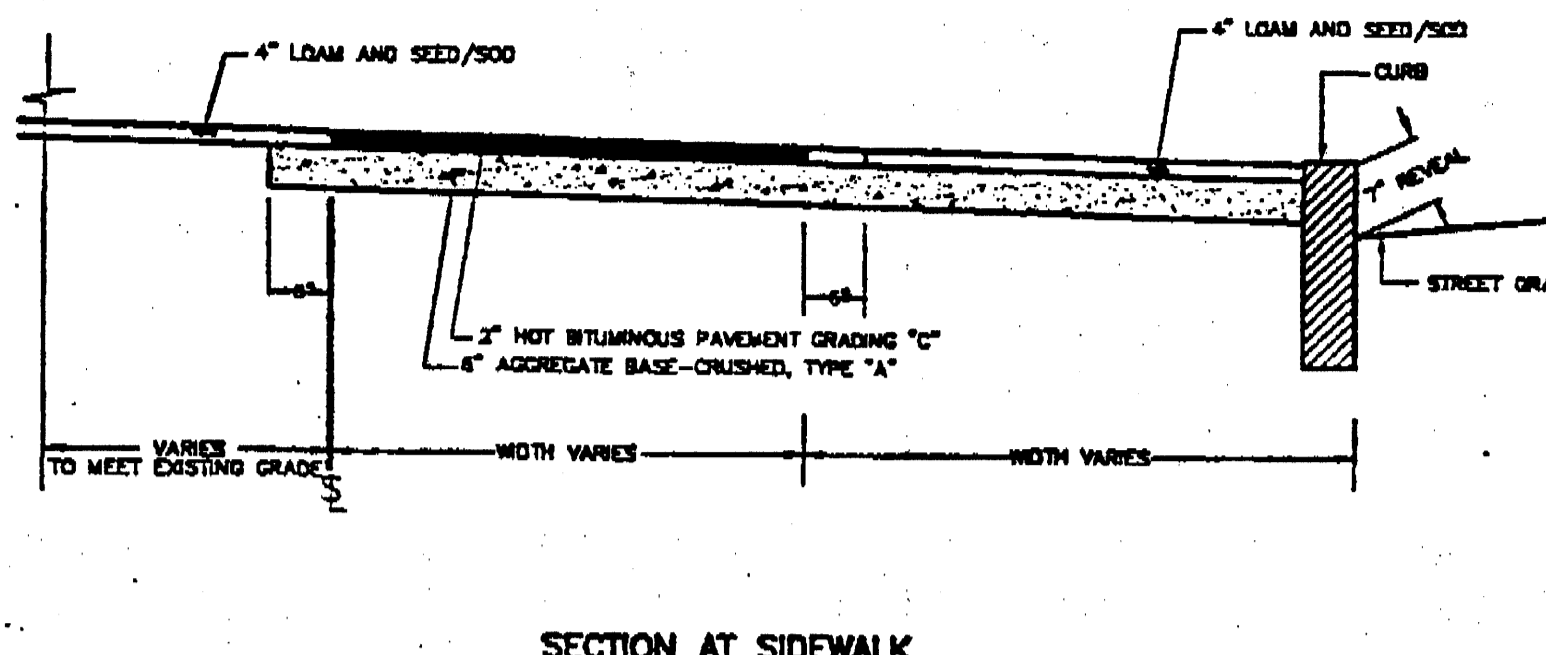


FIGURE I - 12
BITUMINOUS SIDEWALK AND DRIVEWAY CONSTRUCTION

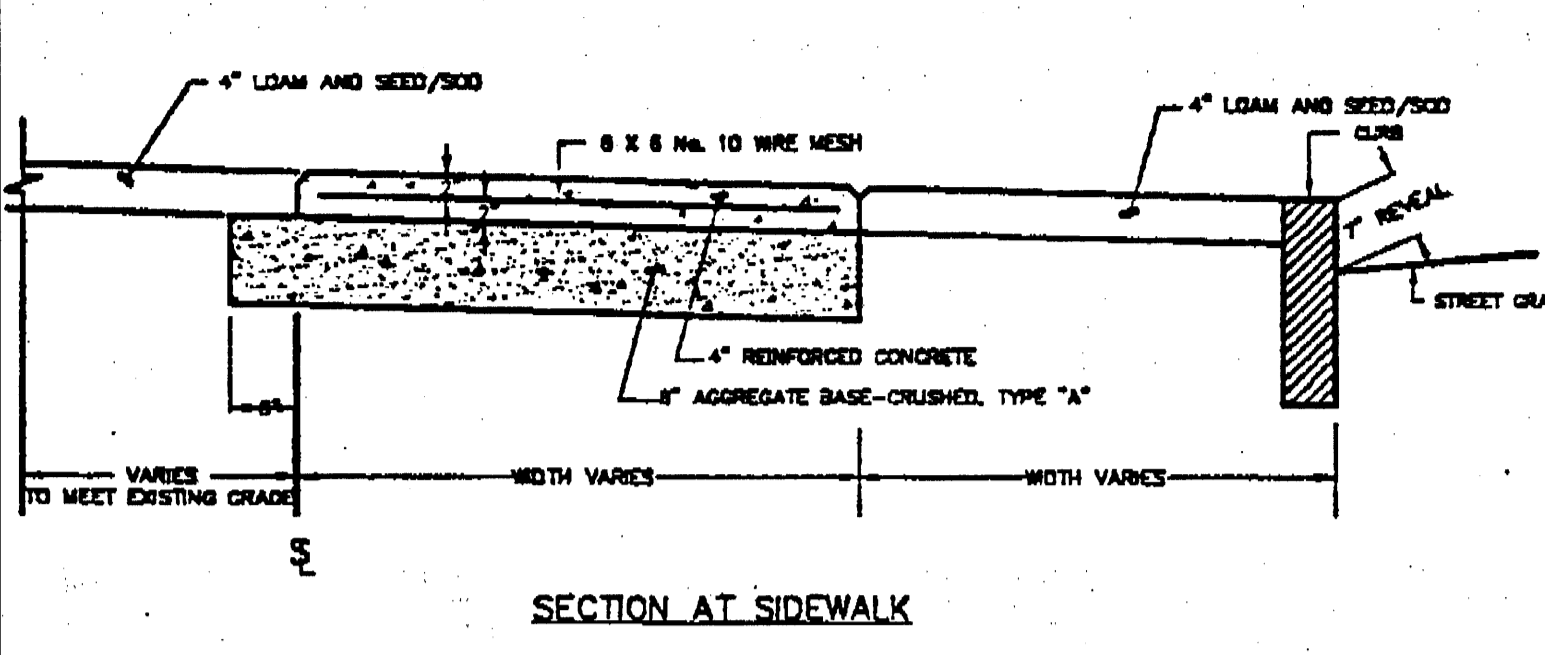
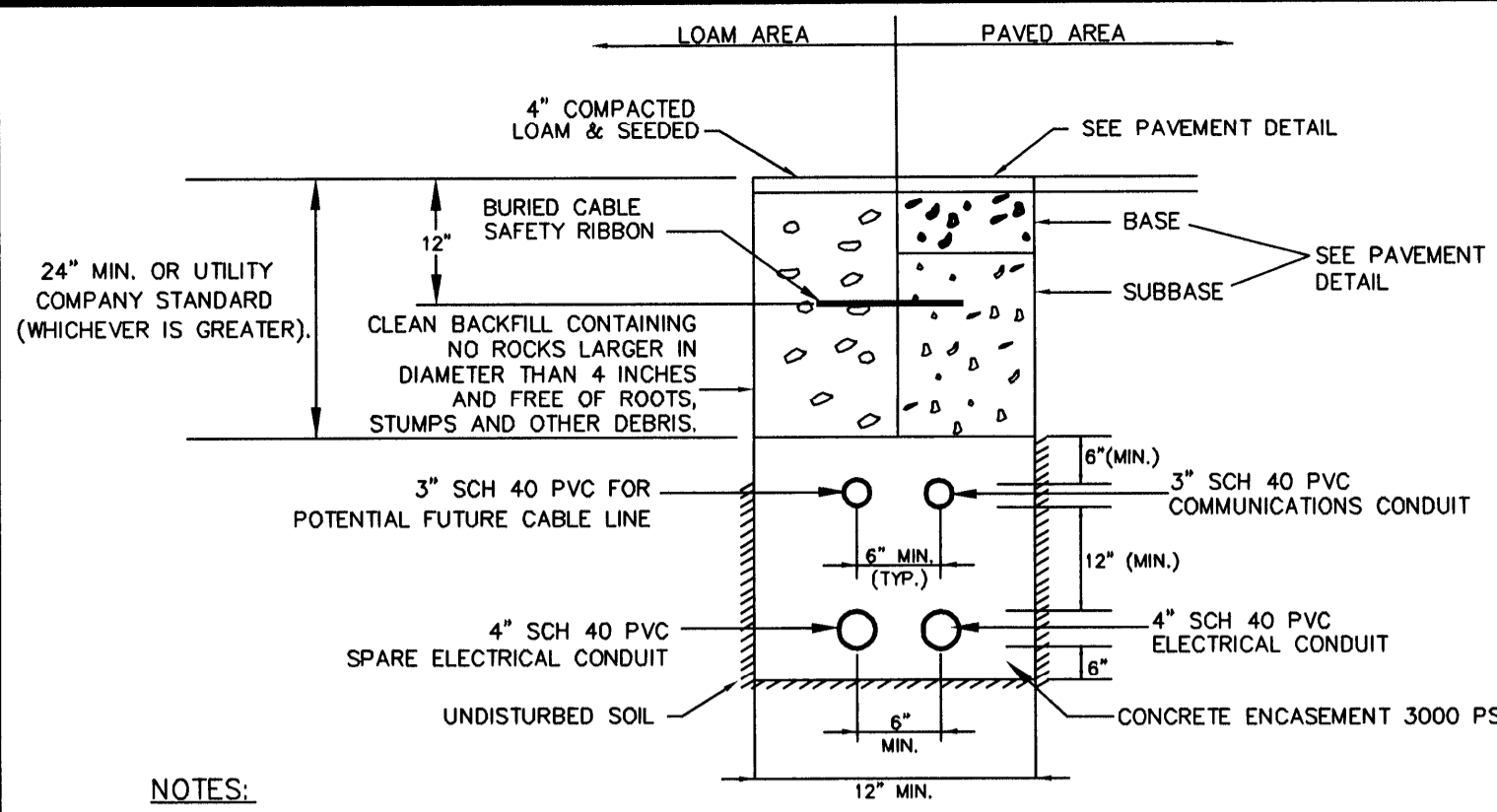


FIGURE I - 13
CONCRETE SIDEWALK AND DRIVEWAY CONSTRUCTION



NOTES:

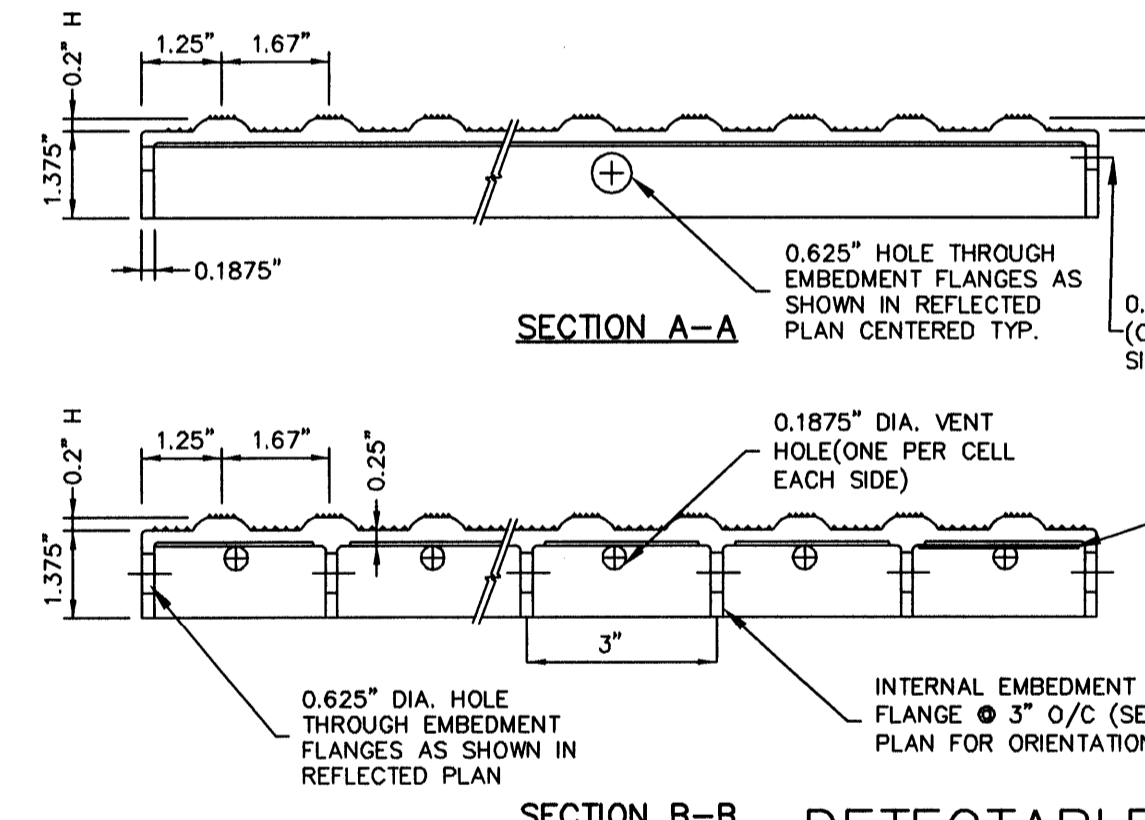
1. CONDUITS TO BE ENCASED IN CONCRETE.
2. DIMENSIONS SHOWN REPRESENT MINIMUM REQUIREMENTS.
3. END 3" SCH 40 PVC FOR POTENTIAL FUTURE CABLE AT THE BASE OF UTILITY POLE CMP 181.

ELECTRICAL AND COMMUNICATION CONDUIT

NOT TO SCALE

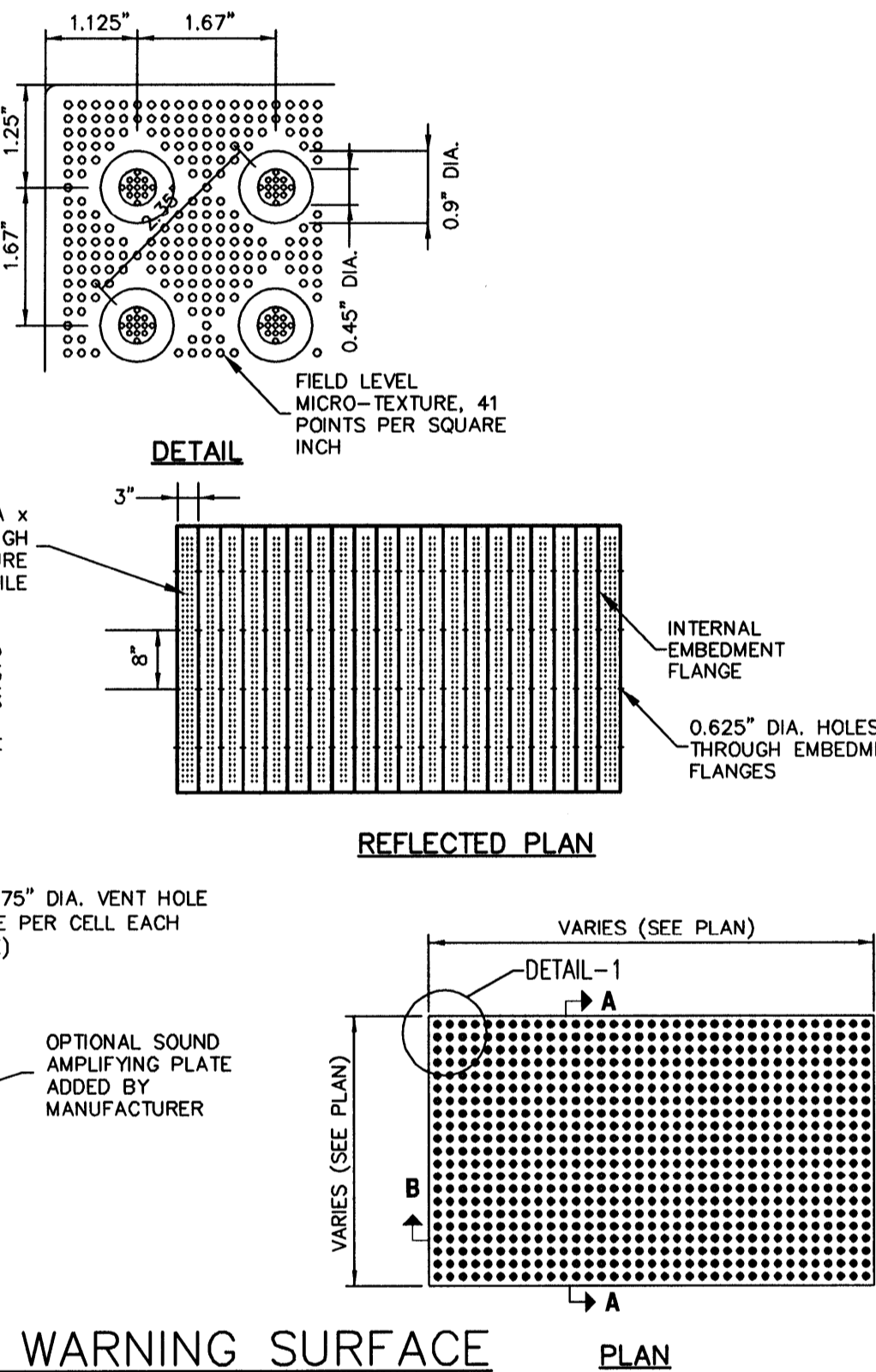
NOTE:

1. DETECTABLE WARNING SYSTEM TO BE ARMOR TILE OR APPROVED EQUAL.
2. DETECTABLE WARNING SHOULD MEET ALL ADA REQUIREMENTS.
3. CURB RAMP MUST HAVE A DETECTABLE WARNING FEATURE EXTENDING THE FULL WIDTH AND DEPTH OF THE RAMP (MID-WALK "IN-LINE" RAMP ONLY NEED DETECTABLE WARNINGS AT WALK/PARKING TRANSITION).
4. DETECTABLE SURFACE MUST CONSIST OF RAISED TRUNCATED DOMES WITH A NOMINAL DIAMETER OF 0.9 INCHES AND A CENTER TO CENTER SPACING OF NOMINAL 1.67 INCHES.
5. THE TEXTURE OF THE DETECTABLE WARNING FEATURE MUST CONTRAST WITH THE SURROUNDING SURFACES (EITHER LIGHT-ON-DARK OR DARK-ON-LIGHT).



DETECTABLE WARNING SURFACE

NOT TO SCALE



THRUST BLOCKING DETAIL

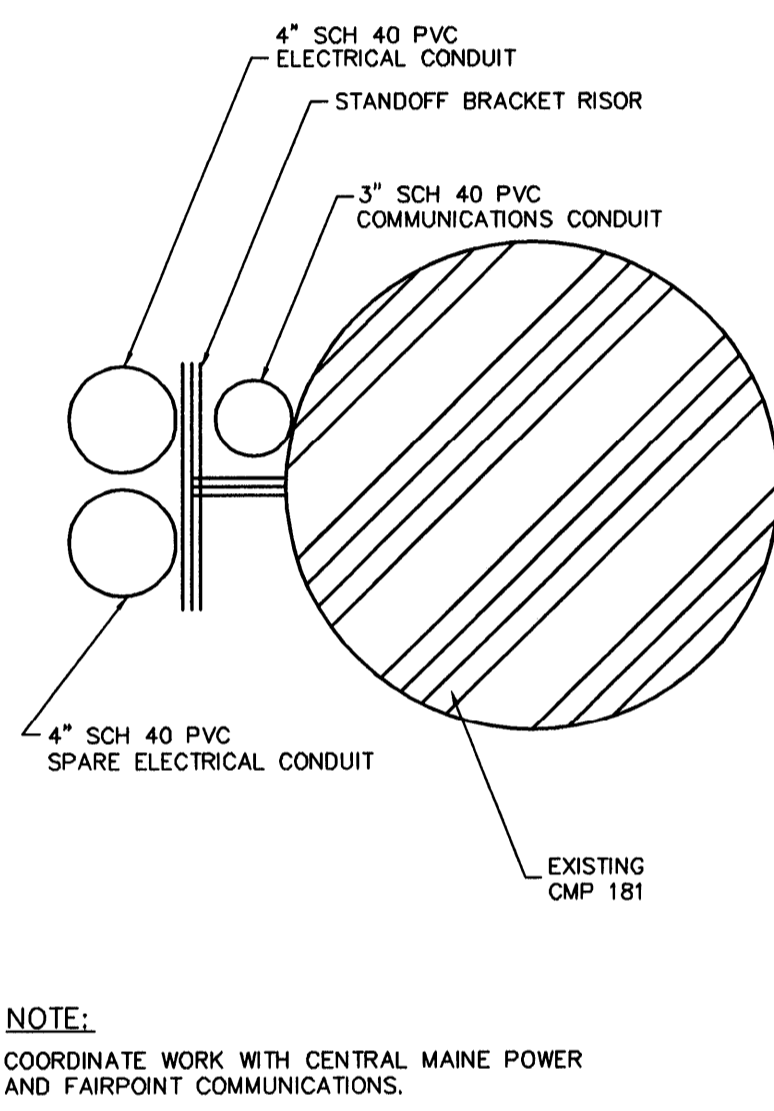
NOT TO SCALE

SQUARE FEET OF CONCRETE THRUST BLOCKING BEARING ON UNDISTURBED MATERIAL

REACTION TYPE	4"	6"	8"	10"	12"
A 90°	0.89	2.19	3.82	11.14	17.24
B 180°	0.65	1.55	2.78	8.38	12.00
C 45°	0.48	1.19	2.12	6.02	9.32
D 22-1/2°	0.25	0.60	1.06	3.08	4.74
E 11-1/4°	0.13	0.30	0.54	1.54	2.38

NOTES:

1. POUR THRUST BLOCKS AGAINST UNDISTURBED MATERIAL, WHERE TRENCH WALL HAS BEEN DISTURBED, EXCAVATE LOOSE MATERIAL AND EXTEND THRUST BLOCK TO UNDISTURBED MATERIAL. NO JOINTS SHALL BE COVERED WITH CONCRETE.
2. ON BENDS AND TEES, EXTEND THRUST BLOCKS FULL LENGTH OF FITTING.
3. PLACE BOARD IN FRONT OF ALL PLUGS BEFORE POURING THRUST BLOCKS.
4. WHERE M.J. PIPE IS USED, M.J. PLUG WITH RETAINER GLAND MAY BE SUBSTITUTED FOR END BLOCKINGS.

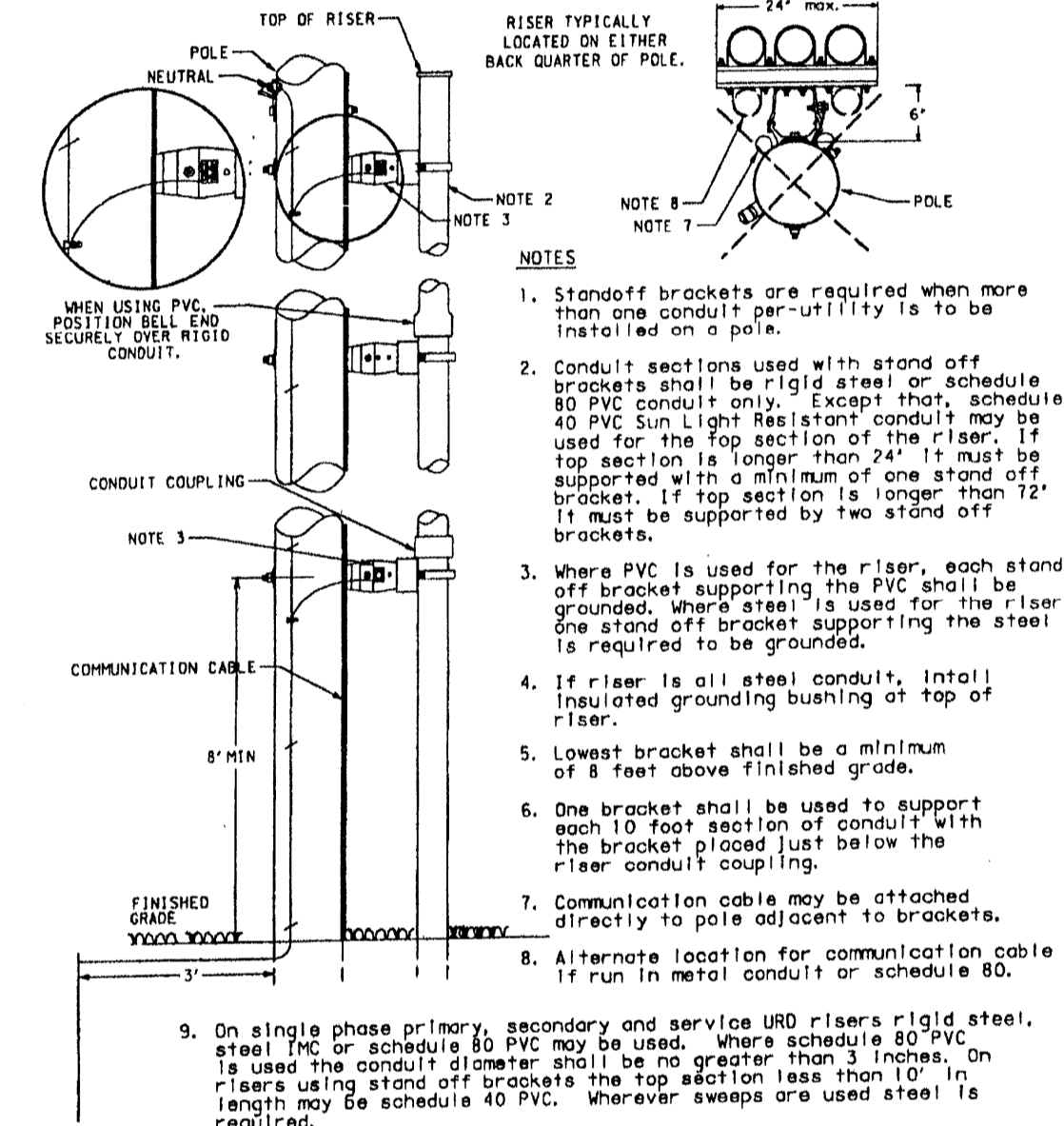


NOTE:

COORDINATE WORK WITH CENTRAL MAINE POWER AND FAIRPOINT COMMUNICATIONS.

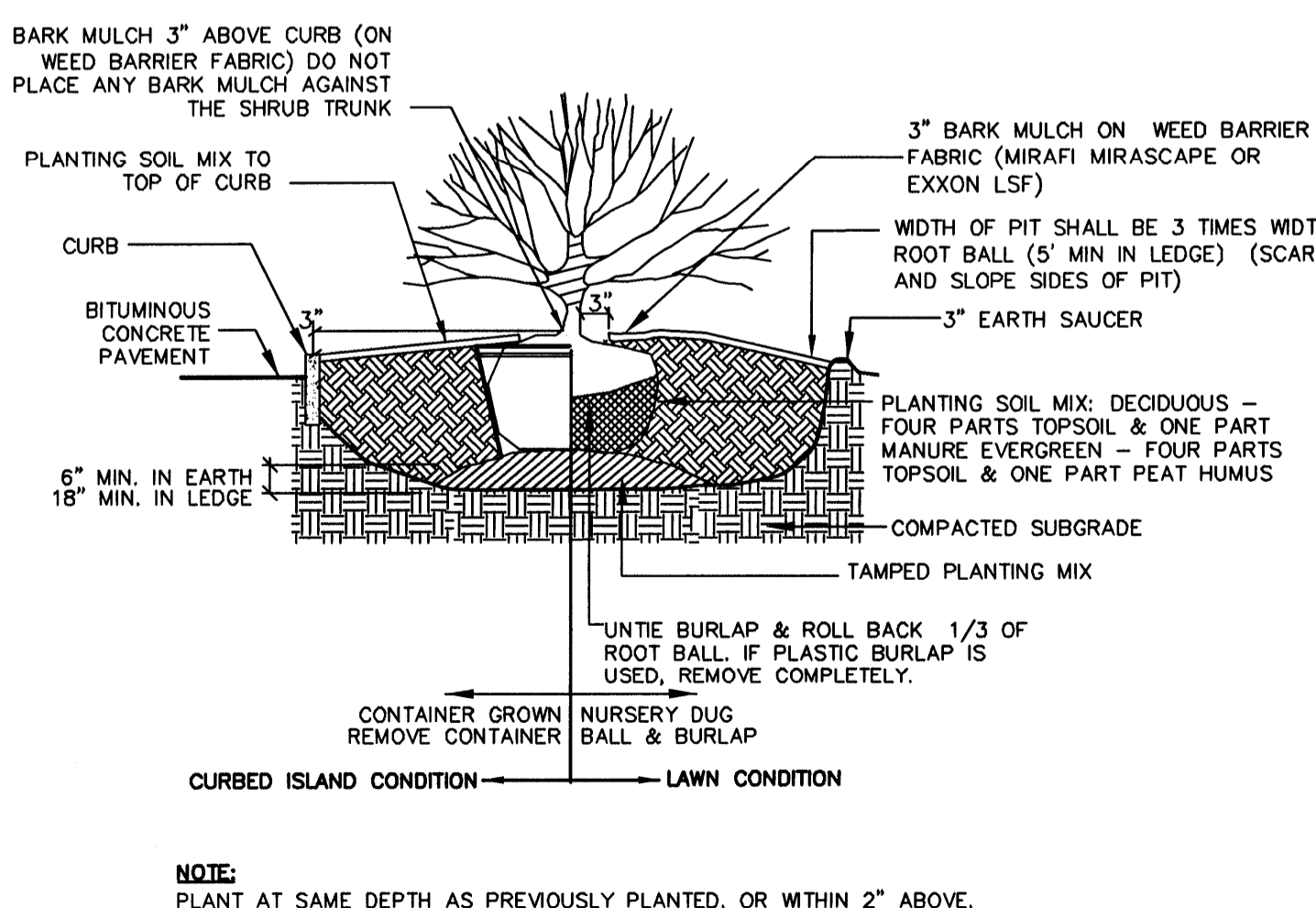
UTILITY POLE CONNECTION

NOT TO SCALE



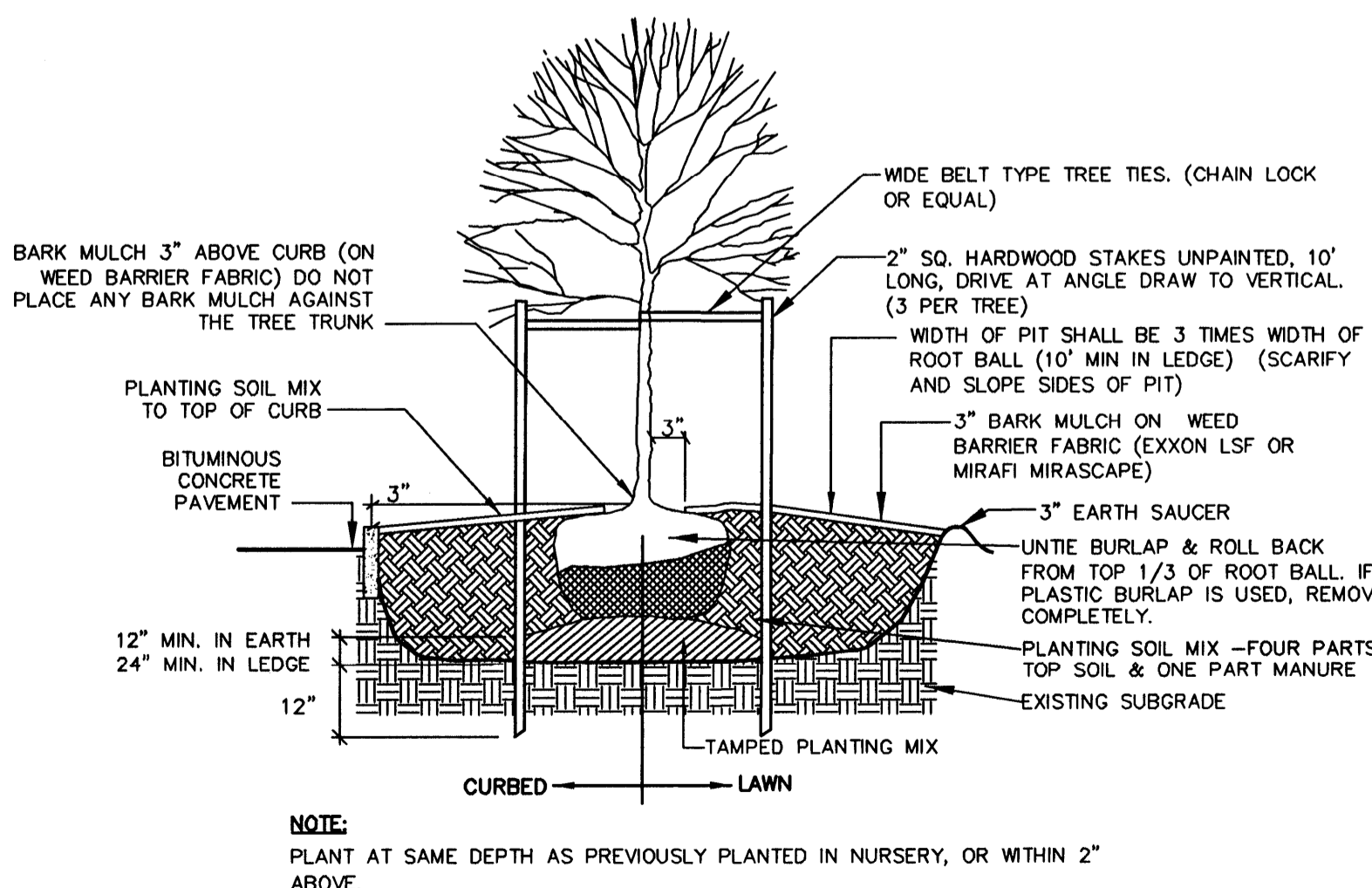
CONDUIT STANDOFF BRACKET FOR MULTIPLE RISERS ON ONE POLE

NOT TO SCALE



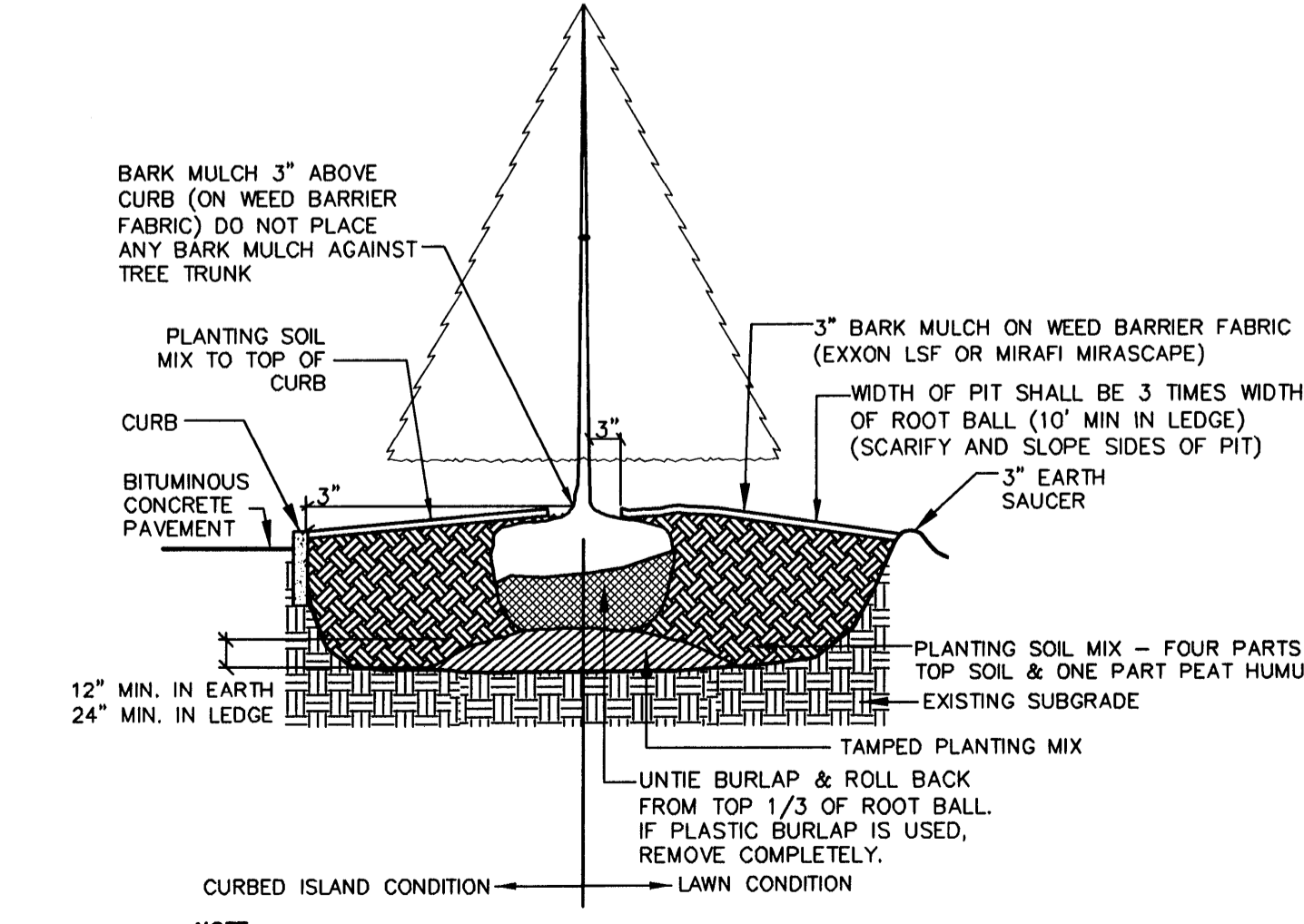
NOTE:

PLANT AT SAME DEPTH AS PREVIOUSLY PLANTED, OR WITHIN 2" ABOVE.



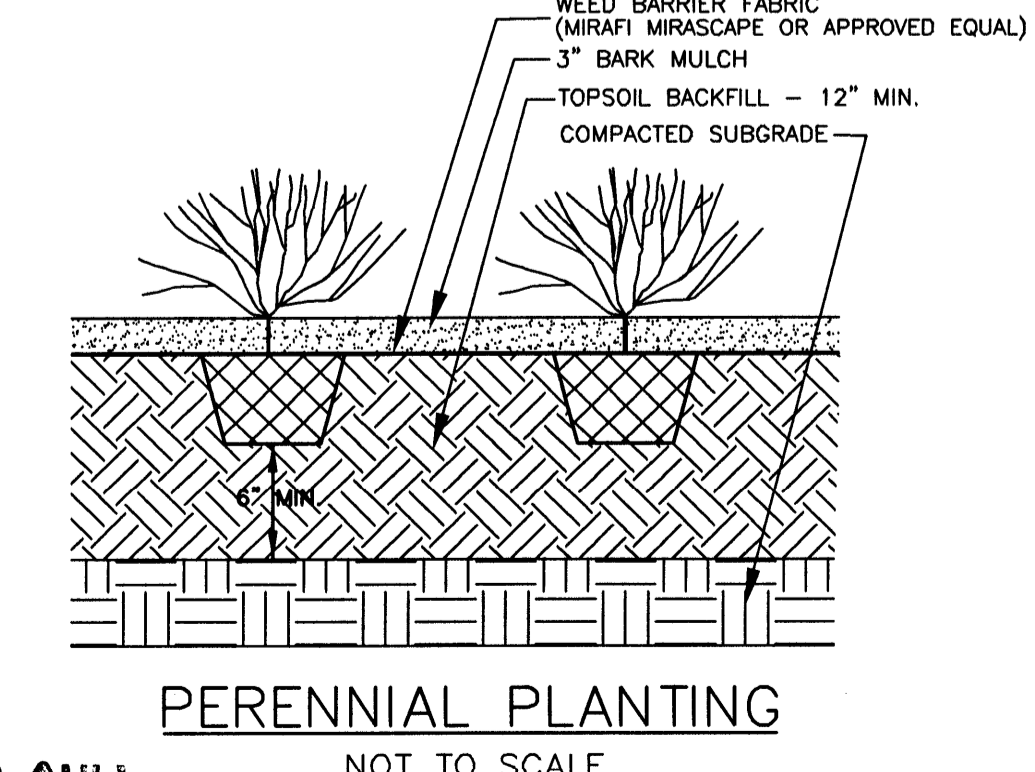
NOTE:

PLANT AT SAME DEPTH AS PREVIOUSLY PLANTED IN NURSERY, OR WITHIN 2" ABOVE.



NOTE:

PLANT AT SAME DEPTH AS PREVIOUSLY PLANTED IN NURSERY, OR WITHIN 2" ABOVE.



PERENNIAL PLANTING

NOT TO SCALE

FOR BIDDING PURPOSES ONLY

DETAILS SHEET

WESTGATE PLAZA
CONGRESS STREET
PORTLAND, ME

Appledore Engineering Inc.
Pease International Tradeport
15 Rye Street, Suite 305
Portsmouth, New Hampshire 03801
(603) 433-8818
aei@appledoreeng.com