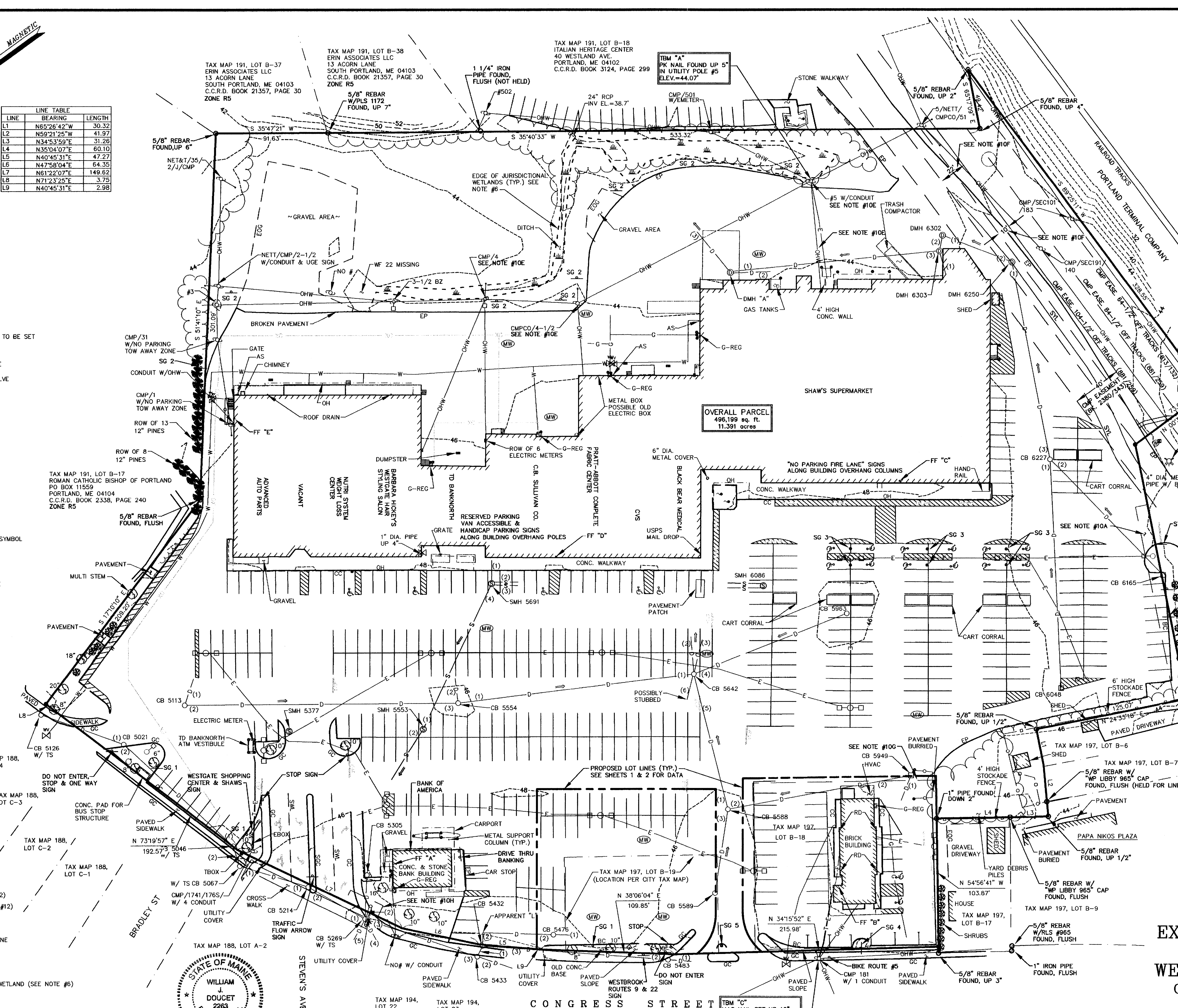
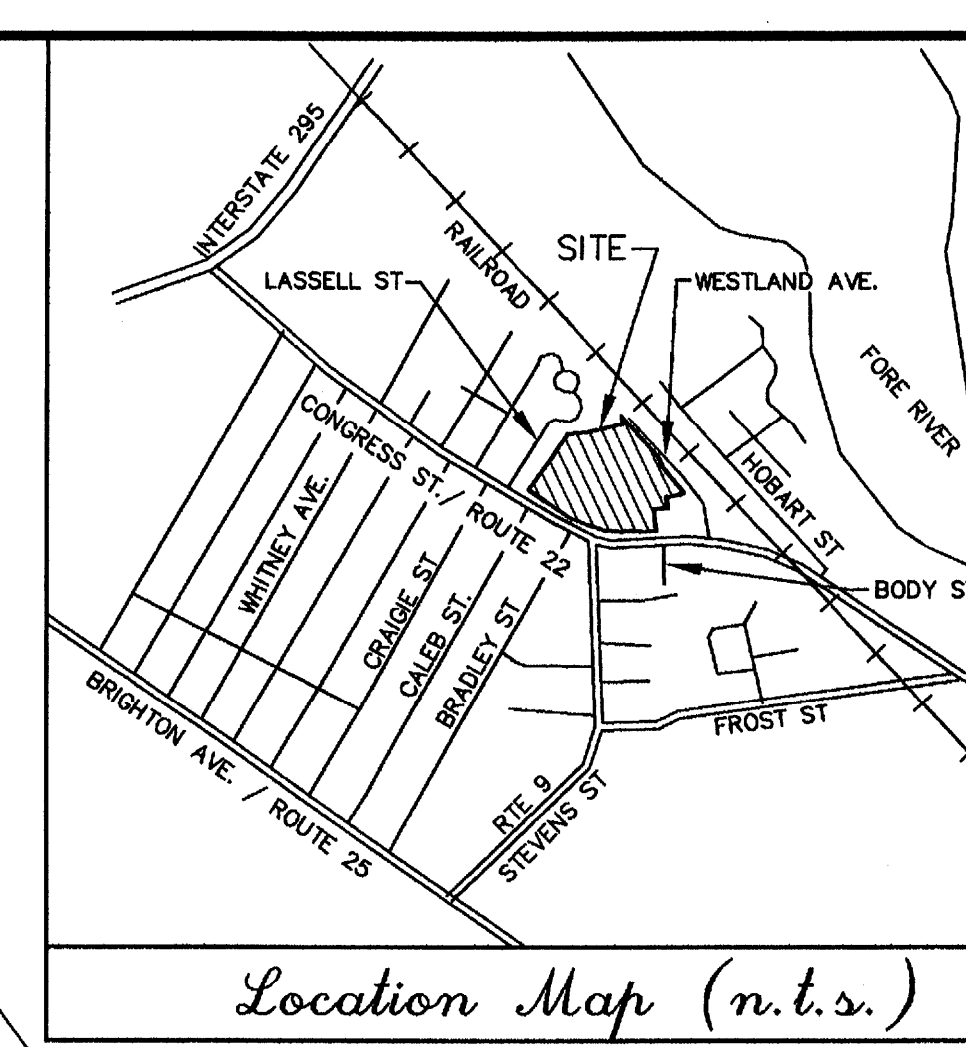
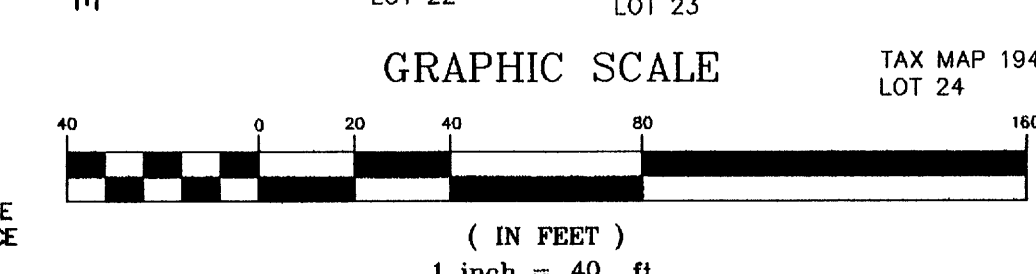
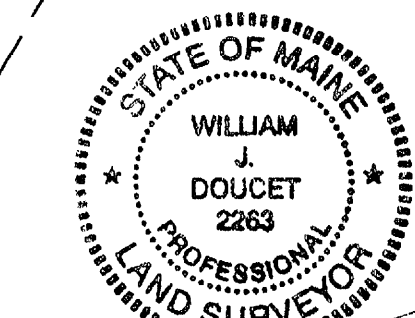


LINE	BEARING	LENGTH
L1	N85°26'42"W	30.32
L2	N59°21'25"W	41.97
L3	N34°53'59"E	31.26
L4	N35°04'07"E	60.10
L5	N40°45'31"E	47.27
L6	N47°58'04"E	64.35
L7	N61°22'07"E	149.62
L8	N71°23'25"E	3.75
L9	N40°45'31"E	2.98

LEGEND

- UTILITY POLE & GUY WIRE
- UTILITY POLE W/ LIGHT
- TRAFFIC LIGHT POLE
- LIGHT POLE
- EXISTING SIGN
- FLAG POLE
- GRANITE BOUND FOUND
- DRILL HOLE FOUND
- IRON PIPE/ROD FOUND
- 5/8" RE-BAR W/ ID CAP TO BE SET
- FIRE HYDRANT
- GAS SHUTOFF GATE VALVE
- WATER SHUTOFF GATE VALVE
- GAS SHUTOFF VALVE
- WATER SHUTOFF VALVE
- GAS REG.
- ELECT. METER
- ELECT. BOX
- CATCH BASIN
- ROUND CATCH BASIN
- DRAIN MANHOLE
- ELECTRIC MANHOLE
- TELEPHONE MANHOLE
- WATER MANHOLE
- SEWER MANHOLE
- MANHOLE
- JURISDICTIONAL WETLAND SYMBOL
- MONITORING WELL
- CONCRETE PAD
- HANDICAP PARKING SPACE
- BOLLARD
- DUMPSTER
- TRAFFIC FLOW ARROWS
- TYP.
- AS
- RD
- RET.
- OH
- FF
- FINISH FLOOR
- EP
- CB
- SWL
- SYL
- DYL
- EBOX
- TBOX
- G-REG.
- GC
- SGC
- CC
- BC
- W/TS
- BEARING
- DIST
- STOCKADE FENCE
- CHAINLINK FENCE
- OVERHEAD WIRES
- DRAIN LINE
- SEWER LINE
- WATER LINE (SEE NOTE #12)
- ELECTRIC LINE (SEE NOTE #12)
- GAS LINE (SEE NOTE #12)
- GAS LINE (SEE NOTE #11)
- APPROX. ADJUTERS LOT LINE
- EASEMENT LINE
- TREE LINE
- CONTOUR LINE
- EDGE OF JURISDICTIONAL WETLAND (SEE NOTE #6)

NOTE:
ALL ELECTRIC, GAS, TEL, WATER, SEWER AND DRAIN SERVICES ARE SHOWN IN SCHEMATIC FASHION, THEIR LOCATIONS ARE NOT PRECISE OR NECESSARILY ACCURATE. NO WORK WHATSOEVER SHALL BE UNDERTAKEN ON THIS SITE USING THIS PLAN TO LOCATE THE ABOVE SERVICES. CONSULT WITH THE PROPER AUTHORITIES CONCERNED WITH THE SUBJECT SERVICE LOCATIONS FOR INFORMATION REGARDING SUCH. CALL DIG-SAFE AT 1-888-DIG-SAFE.



FINISHED FLOOR TABLE

FF "A"	EL.=47.5'	METAL THRESHOLD
FF "B"	EL.=48.3'	METAL THRESHOLD
FF "C"	EL.=48.31'	RUBBER FLOOR
FF "D"	EL.=48.2'	TILE FLOOR
FF "E"	EL.=37.5'	CONC. SLAB OUTSIDE BASEMENT DOOR

SIGN TABLE

SG 1	NO OVERNIGHT PARKING, TOW AWAY ZONE & NO VEHICLES FOR SALE SIGN
SG 2	NO PARKING ANYTIME SIGN
SG 3	HANDICAP PARKING VAN ACCESSIBLE SIGN
SG 4	OLD FRIENDLY'S SIGN ON CONC. BASE W/ LIGHT
SG 5	BOLLARD W/ DO NOT ENTER & TRAFFIC FLOW ARROW SIGN

SEE SHEET 4 FOR NOTES & DRAINAGE TABLE

EXISTING CONDITIONS PLAN OF WESTGATE SHOPPING PLAZA CONGRESS STREET / ROUTE 22 PORTLAND, MAINE

DRAWN BY: O.M.S. DATE: FEB. 11, 2008
 CHECKED BY: J.F.K. DRAWING NO.: 2584C
 JOB NO.: 2584 SHEET 3 OF 4
 SHEETS 3 & 4 NOT FOR RECORDING

