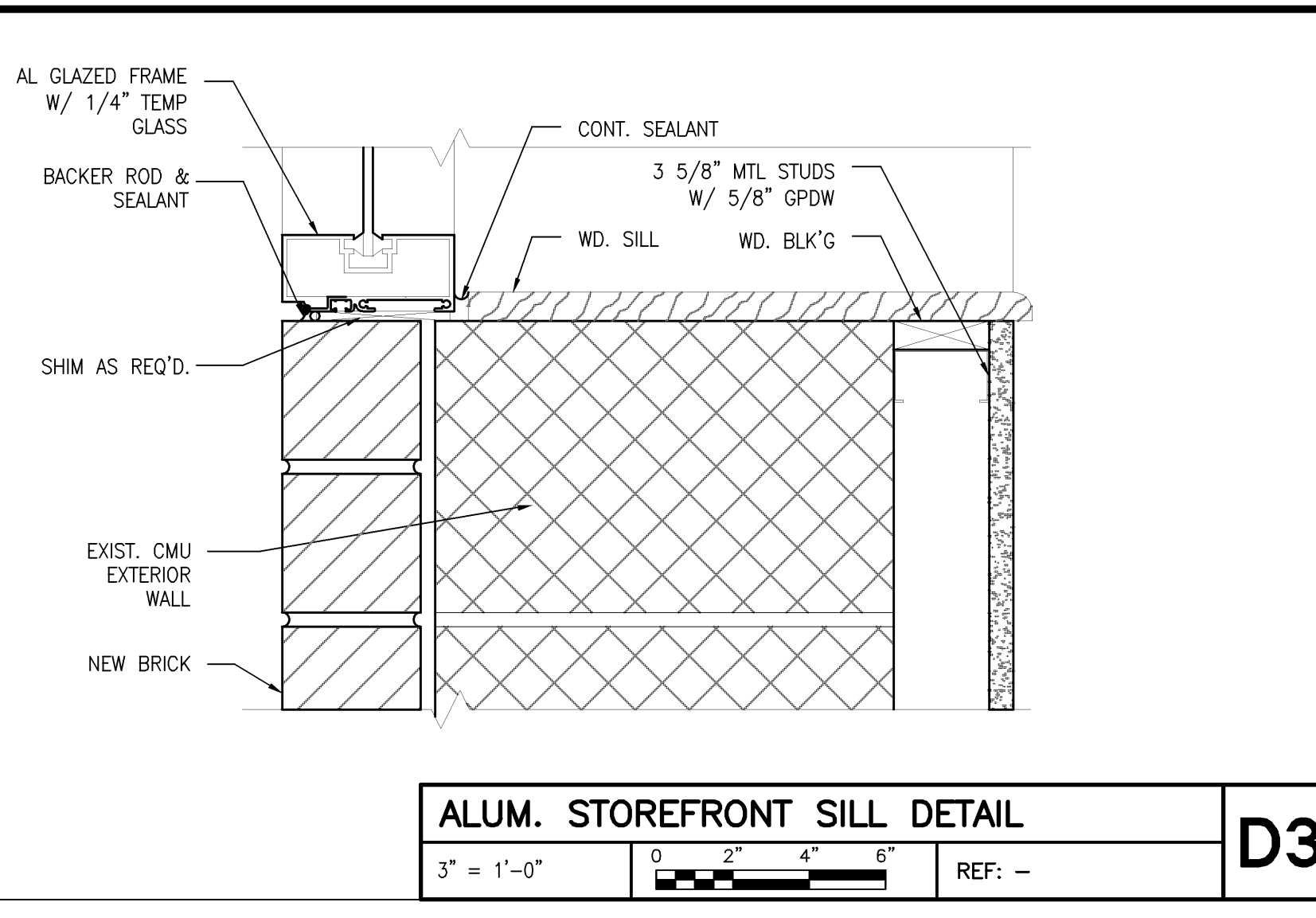
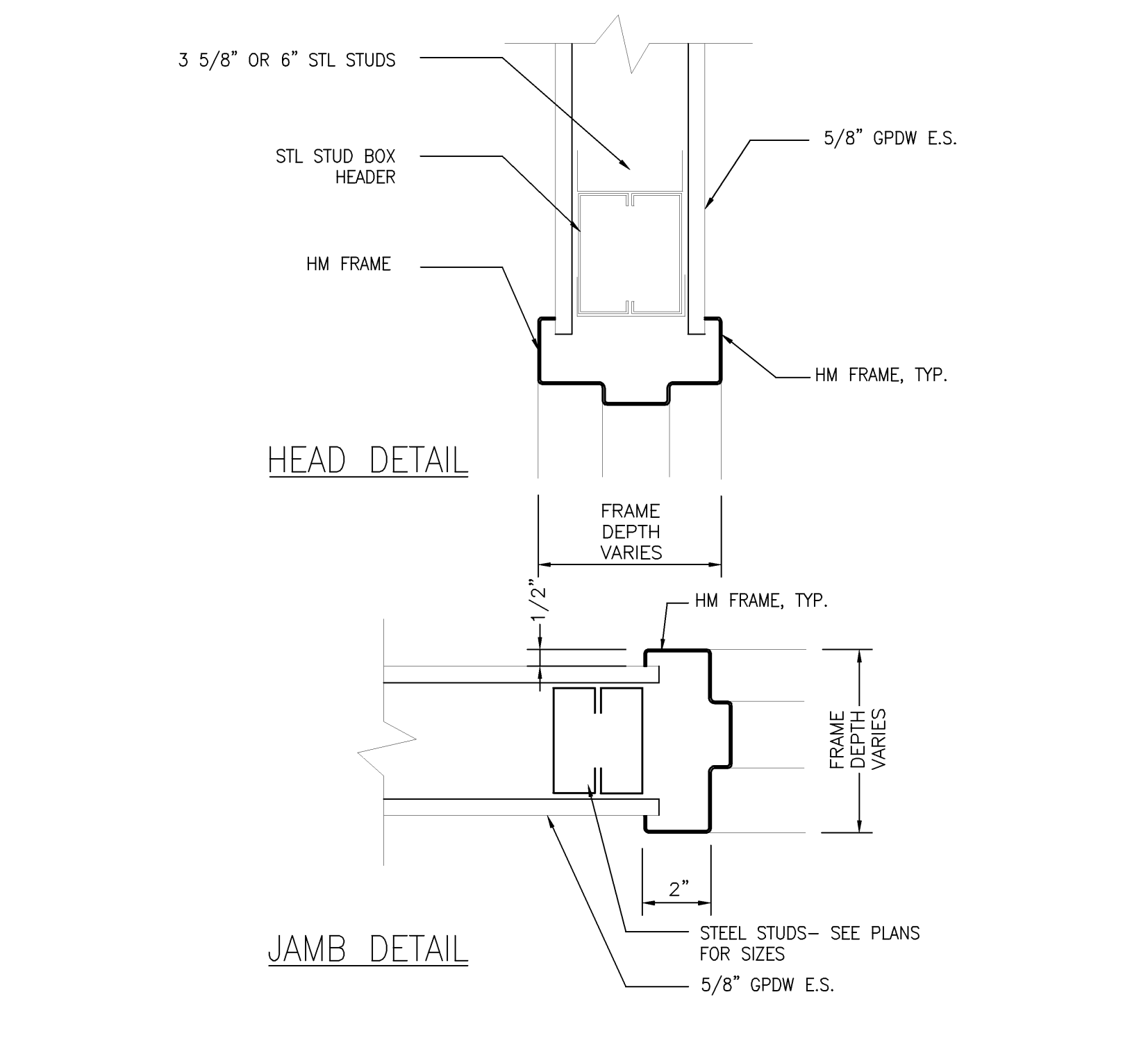


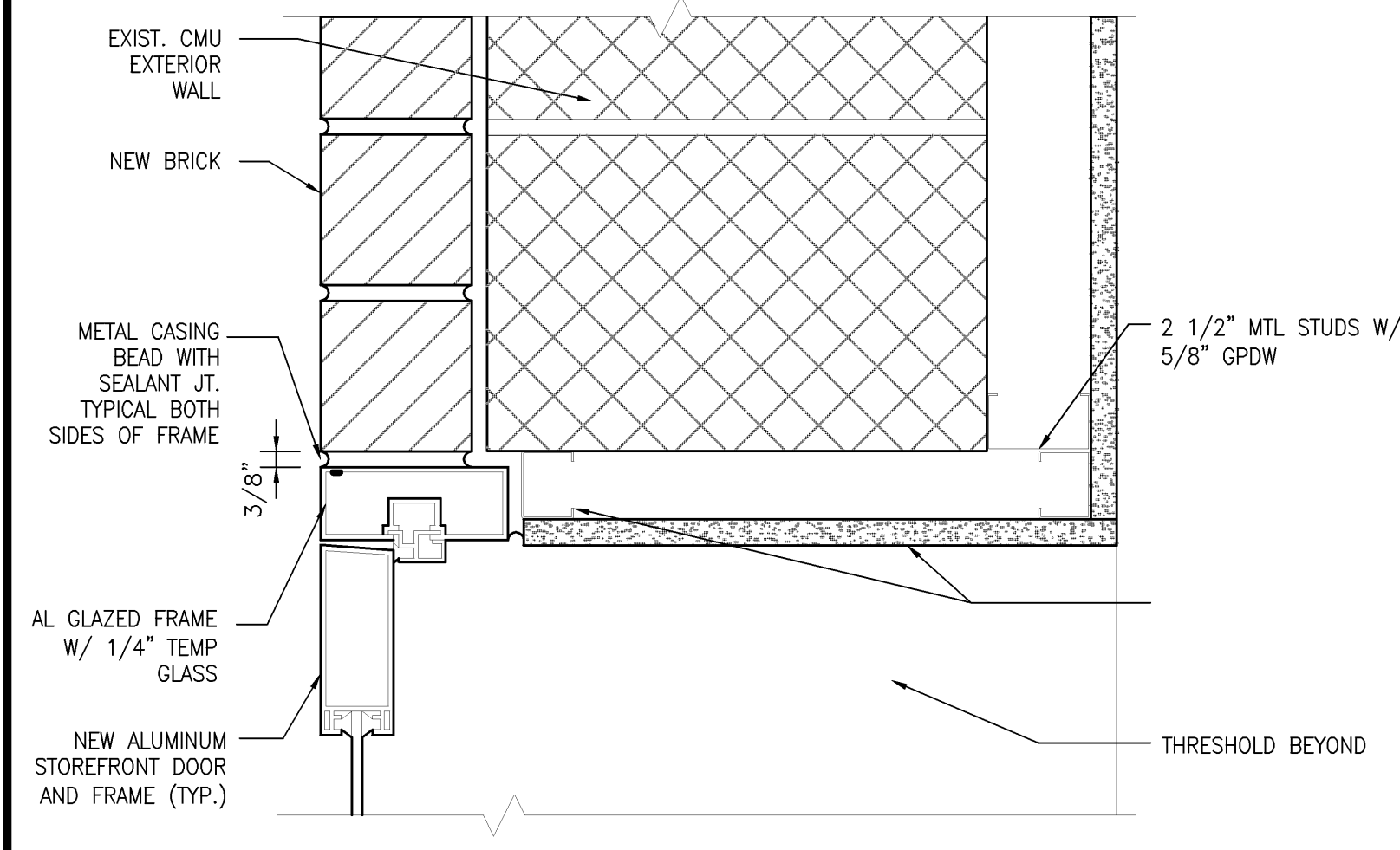
**EXTERIOR ALUM. DOOR JAMB & SIDELIGHT**  
 3" = 1'-0" REF: --



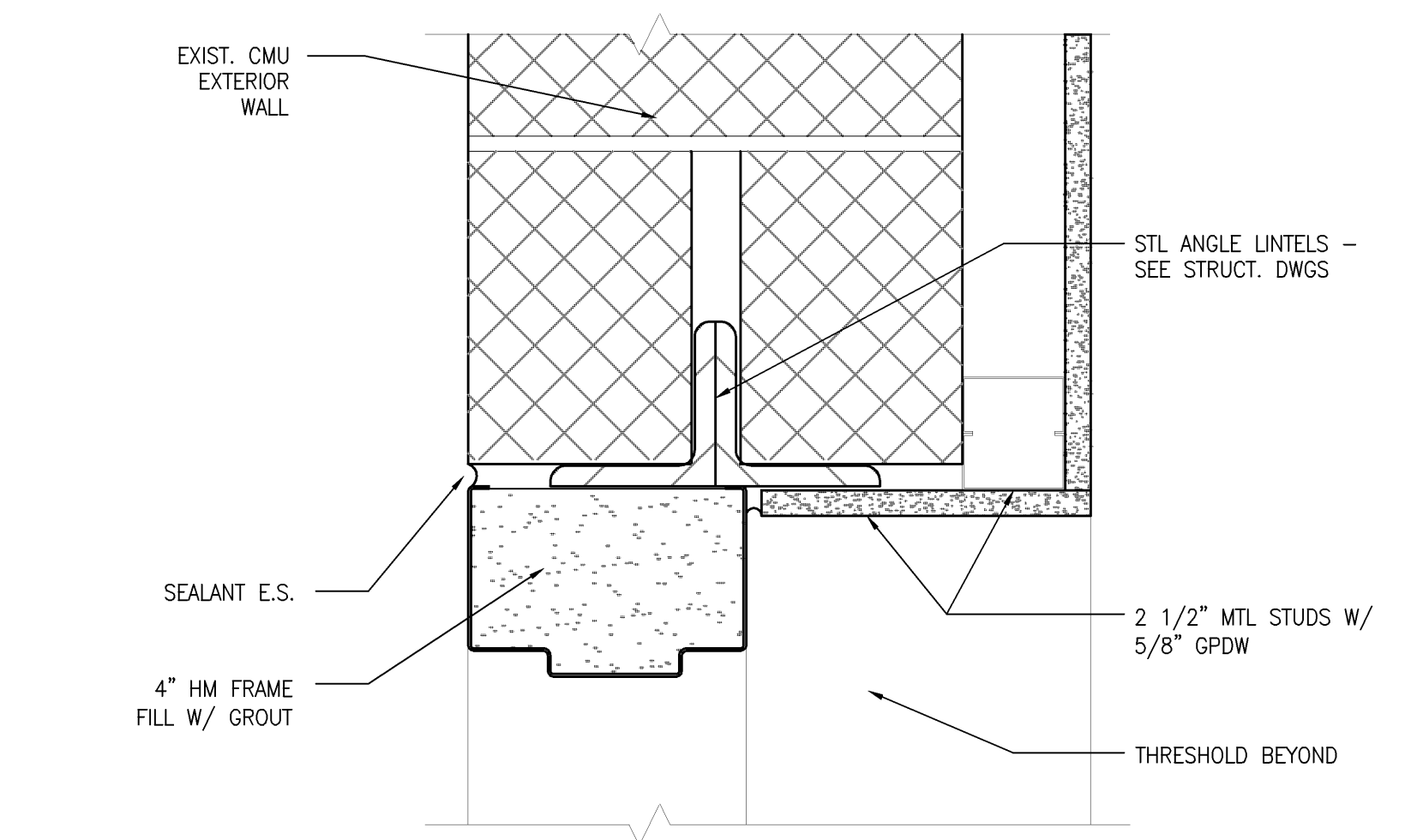
**ALUM. STOREFRONT SILL DETAIL**  
 3" = 1'-0" REF: --



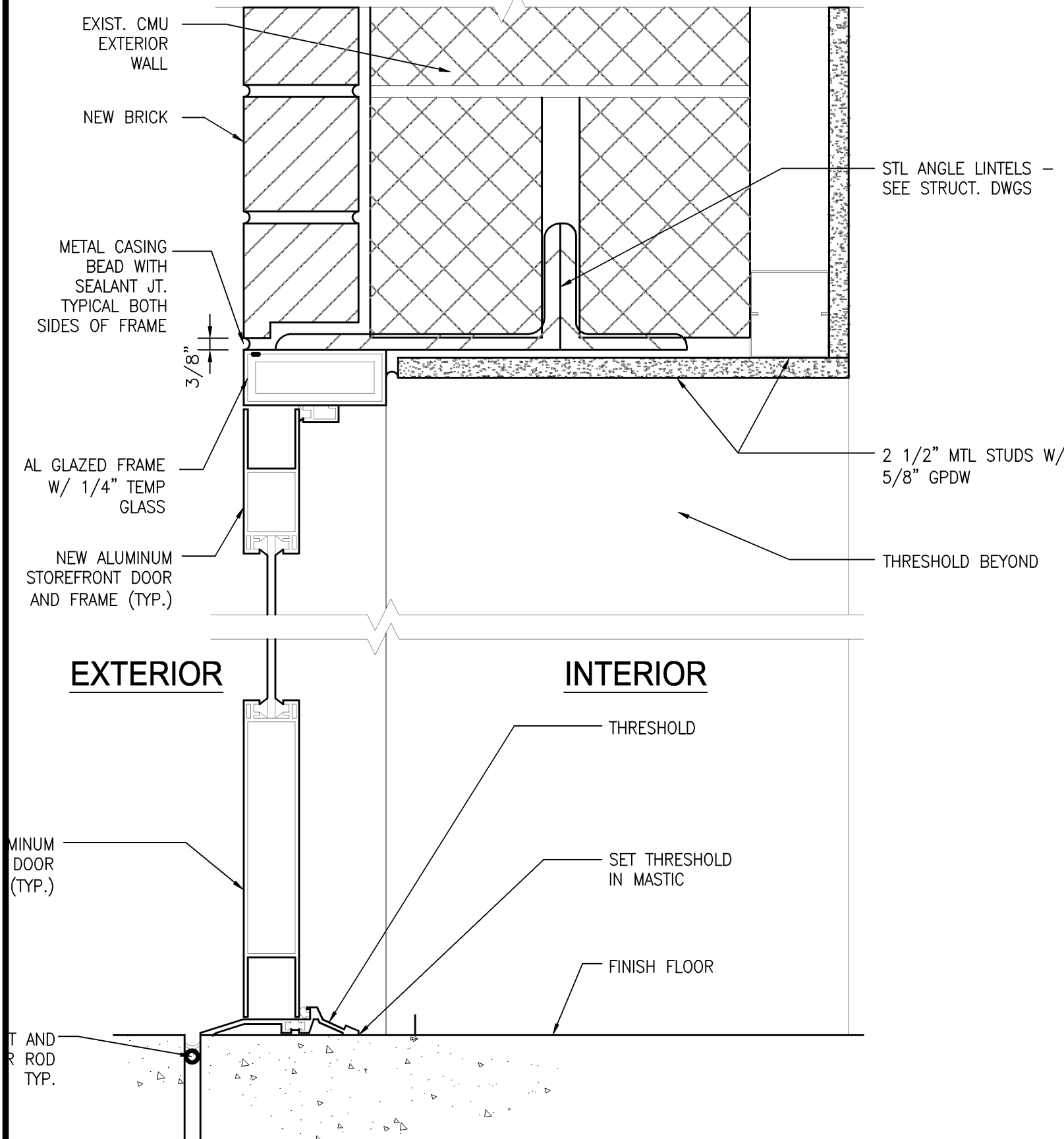
**INTERIOR HOLLOW MTL DOOR JAMB/HEAD**  
 3" = 1'-0" REF: --



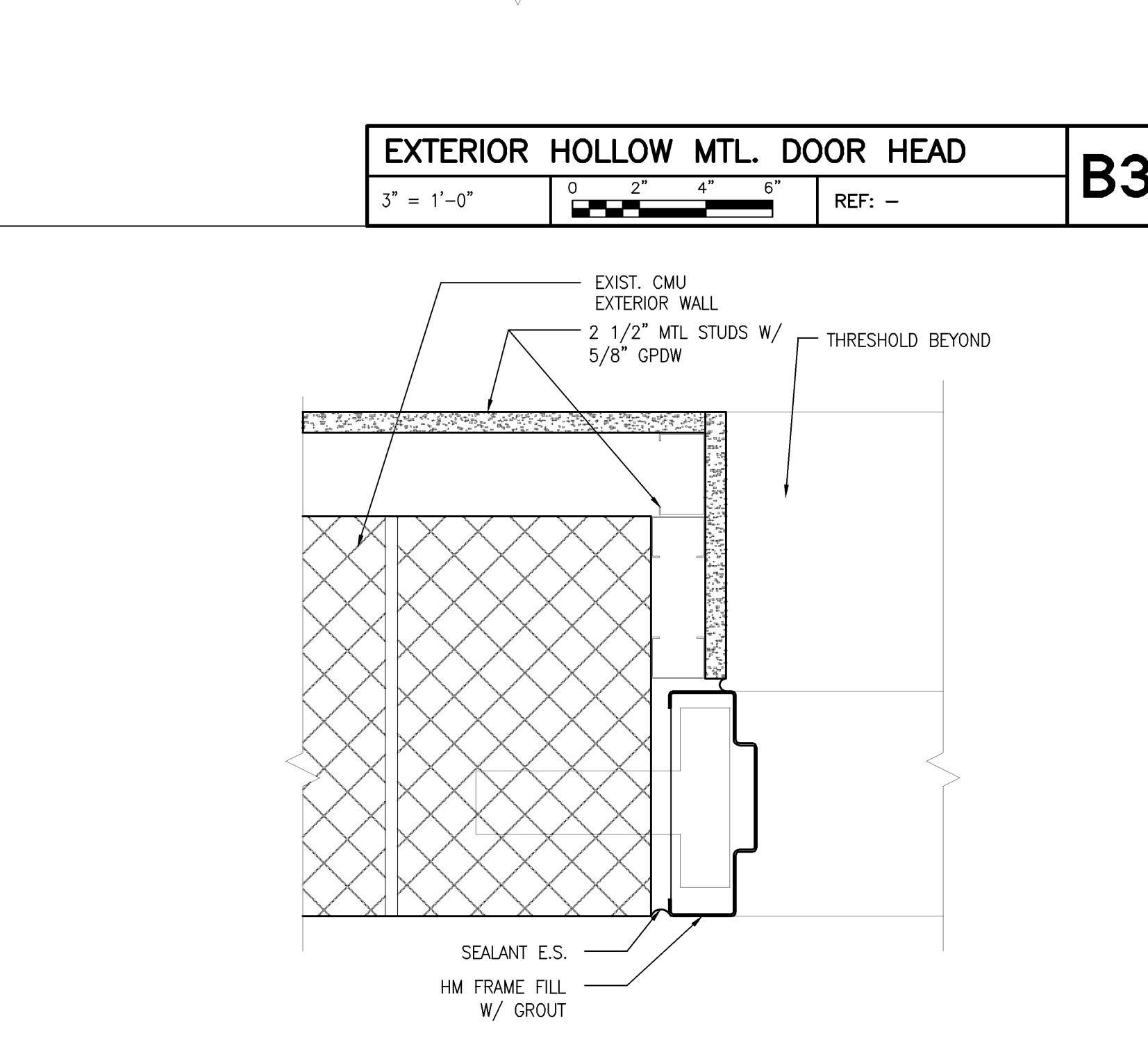
**EXTERIOR ALUM. DOOR JAMB**  
 3" = 1'-0" REF: --



**EXTERIOR HOLLOW MTL DOOR HEAD**  
 3" = 1'-0" REF: --



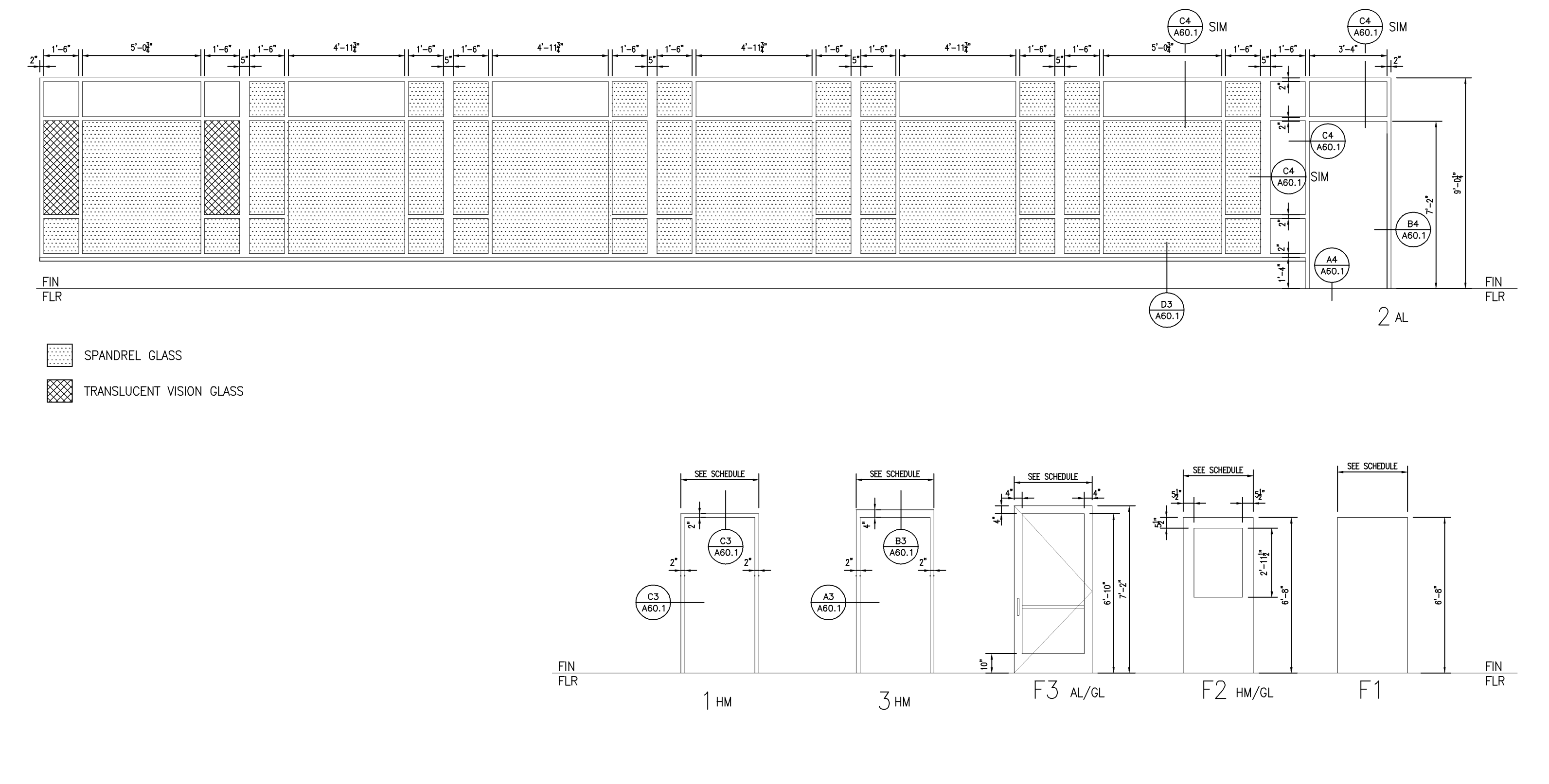
**EXTERIOR ALUM. DOOR HEAD/SILL**  
 3" = 1'-0" REF: --



**EXTERIOR HOLLOW MTL DOOR JAMB**  
 3" = 1'-0" REF: --

**Door & Frame Schedule**

NO.	DOOR			FRAME		FIRE RATING LABEL	HW SET NO	NOTES				
	SIZE	MATL	TYPE	GLAZ	DETAIL							
	WD	HGT	THK									
101	3'-4"	7'-0"	1 3/4"	AL/GL	F3	TEMP	AL	2	A4/A60.1 B4/A60.1	---	---	Automatic opener - push paddle
102	3'-2"	7'-0"	1 3/4"	WD	F1	---	HM	1	C3/A60.1 C3/A60.1	---	---	---
103	3'-2"	7'-0"	1 3/4"	WD	F1	---	HM	1	C3/A60.1 C3/A60.1	---	---	---
104	3'-2"	7'-0"	1 3/4"	WD	F1	---	HM	1	C3/A60.1 C3/A60.1	---	---	---
105	3'-2"	7'-0"	NA	---	---	---	---	---	---	---	---	Cased opening
106	3'-2"	7'-0"	1 3/4"	WD	F1	---	HM	1	C3/A60.1 C3/A60.1	---	---	---
107	3'-2"	7'-0"	1 3/4"	WD	F1	---	HM	1	C3/A60.1 C3/A60.1	---	---	---
108	3'-2"	7'-0"	1 3/4"	WD	F1	---	HM	1	C3/A60.1 C3/A60.1	---	---	---
109	3'-2"	7'-0"	1 3/4"	WD	F1	---	HM	1	C3/A60.1 C3/A60.1	---	---	---
110	3'-2"	7'-0"	1 3/4"	WD	F1	---	HM	1	C3/A60.1 C3/A60.1	---	---	---
111	3'-0"	7'-0"	1 3/4"	WD	F1	---	HM	1	C3/A60.1 C3/A60.1	---	---	---
112	2'-6"	7'-0"	1 3/4"	WD	F1	---	HM	1	C3/A60.1 C3/A60.1	---	---	---
113	3'-0"	7'-0"	1 3/4"	WD	F1	---	HM	1	C3/A60.1 C3/A60.1	---	---	---
114	3'-2"	7'-0"	1 3/4"	WD	F1	---	HM	1	C3/A60.1 C3/A60.1	---	---	---
115	3'-0"	7'-0"	1 3/4"	WD	F1	---	HM	1	C3/A60.1 C3/A60.1	---	---	---
116	3'-0"	7'-0"	1 3/4"	WD	F1	---	HM	1	C3/A60.1 C3/A60.1	---	---	---
117	3'-0"	7'-0"	1 3/4"	WD	F1	---	HM	1	C3/A60.1 C3/A60.1	---	---	---
118	3'-0"	7'-0"	1 3/4"	WD	F1	---	HM	1	C3/A60.1 C3/A60.1	---	---	---
119	3'-0"	7'-0"	1 3/4"	WD	F1	---	HM	1	C3/A60.1 C3/A60.1	---	---	---
120	3'-0"	7'-0"	1 3/4"	WD	F1	---	HM	1	C3/A60.1 C3/A60.1	---	---	---
122	3'-0"	7'-0"	1 3/4"	WD	F1	---	HM	1	C3/A60.1 C3/A60.1	---	---	---
123	5'-0"	7'-0"	1 3/4"	WD	F1	---	HM	1	C3/A60.1 B3/A60.1	---	---	---
124	3'-0"	7'-0"	1 3/4"	WD	F1	---	HM	1	C3/A60.1 C3/A60.1	---	---	---
125	3'-0"	7'-0"	1 3/4"	WD	F1	---	HM	1	C3/A60.1 C3/A60.1	---	---	---
126	3'-0"	7'-0"	1 3/4"	WD	F1	---	HM	1	C3/A60.1 C3/A60.1	---	---	---
127	3'-0"	7'-0"	1 3/4"	WD	F1	---	HM	1	C3/A60.1 C3/A60.1	---	---	---
128	3'-0"	7'-0"	1 3/4"	WD	F1	---	HM	1	C3/A60.1 C3/A60.1	---	---	---
130	3'-2"	7'-0"	1 3/4"	WD	F1	---	HM	1	C3/A60.1 C3/A60.1	---	---	---
133	3'-2"	7'-0"	1 3/4"	WD	F1	---	HM	1	C3/A60.1 C3/A60.1	---	---	---
134	3'-2"	7'-0"	1 3/4"	WD	F1	---	HM	1	C3/A60.1 C3/A60.1	---	---	---
135	3'-2"	7'-0"	1 3/4"	WD	F1	---	HM	1	C3/A60.1 C3/A60.1	---	---	---
136	3'-2"	7'-0"	1 3/4"	WD	F1	---	HM	1	C3/A60.1 C3/A60.1	---	---	---
137	3'-2"	7'-0"	1 3/4"	WD	F1	---	HM	1	C3/A60.1 C3/A60.1	---	---	---
138	3'-2"	7'-0"	1 3/4"	WD	F1	---	HM	1	C3/A60.1 C3/A60.1	---	---	---
139	3'-2"	7'-0"	1 3/4"	WD	F1	---	HM	1	C3/A60.1 C3/A60.1	---	---	---
140	3'-0"	7'-0"	1 3/4"	HM	F2	---	HM	2	A3/A60.1 B3/A60.1	---	---	Card reader
141	2'-8"	7'-0"	1 3/4"	WD	F1	---	HM	1	C3/A60.1 C3/A60.1	---	---	---
142	3'-2"	7'-0"	1 3/4"	WD	F1	---	HM	1	C3/A60.1 C3/A60.1	---	---	---
143	3'-0"	7'-0"	1 3/4"	HM	F2	---	HM	2	A3/A60.1 B3/A60.1	---	---	---
144	2'-6"	7'-0"	1 3/4"	WD	F1	---	HM	1	C3/A60.1 C3/A60.1	---	---	---
145	3'-0"	7'-0"	1 3/4"	WD	F1	---	HM	1	C3/A60.1 C3/A60.1	---	---	---
146A	3'-0"	7'-0"	1 3/4"	WD	F1	---	HM	1	C3/A60.1 C3/A60.1	---	---	---
146B	3'-0"	7'-0"	1 3/4"	WD	F1	---	HM	1	C3/A60.1 C3/A60.1	---	---	---
148	5'-0"	7'-0"	1 3/4"	WD	F1	---	HM	1	C3/A60.1 B3/A60.1	---	---	---
149	3'-2"	7'-0"	1 3/4"	WD	F1	---	HM	1	C3/A60.1 C3/A60.1	---	---	---
153	3'-2"	7'-0"	1 3/4"	WD	F1	---	HM	1	C3/A60.1 C3/A60.1	---	---	---
154	3'-2"	7'-0"	1 3/4"	WD	F1	---	HM	1	C3/A60.1 C3/A60.1	---	---	---
155	3'-2"	7'-0"	1 3/4"	WD	F1	---	HM	1	C3/A60.1 C3/A60.1	---	---	---
156	3'-2"	7'-0"	1 3/4"	WD	F1	---	HM	1	C3/A60.1 C3/A60.1	---	---	---
157	3'-2"	7'-0"	1 3/4"	WD	F1	---	HM	1	C3/A60.1 C3/A60.1	---	---	---
159	3'-2"	7'-0"	1 3/4"	WD	F1	---	HM	1	C3/A60.1 C3/A60.1	---	---	---
160	3'-0"	7'-0"	1 3/4"	SS	F4	---	SS	3	XX/A60.1 XX/A60.1	---	---	G.C. To re-locate exist. S.S. Door & frame
161	3'-0"	7'-0"	1 3/4"	WD	F1	---	HM	1	C3/A60.1 C3/A60.1	---	---	---
162	3'-0"	7'-0"	1 3/4"	WD	F1	---	HM	1	C3/A60.1 C3/A60.1	---	---	---
163	3'-0"	7'-0"	1 3/4"	WD	F1	---	HM	1	C3/A60.1 C3/A60.1	---	---	---
164	3'-2"	7'-0"	1 3/4"	WD	F1	---	HM	1	C3/A60.1 C3/A60.1	---	---	---
165	2'-8"	7'-0"	1 3/4"	WD	F1	---	HM	1	C3/A60.1 C3/A60.1	---	---	---
166	2'-8"	7'-0"	1 3/4"	WD	F1	---	HM	1	C3/A60.1 C3/A60.1	---	---	---



**DOOR & FRAME SCHEDULE**  
 NTS REF: --

**DOOR & FRAME ELEVATIONS**  
 1/4" = 1'-0" REF: --

**HARRIMAN**  
 Architects + Engineers  
 One Auburn Business Park  
 Auburn, Maine 04210  
 207.784.5100 tel  
 207.782.3017 fax  
 56 Pearl St., Suite 301  
 Portland, Maine 04101  
 207.775.0053 tel  
 207.775.0460 fax  
 www.harriman.com  
 © 2007

Project Title  
**MERCY HEALTH CENTER**  
**WESTGATE PLAZA**  
 PORTLAND, MAINE  
 HA Project No. **07182**  
 Key Plan

**DOOR & FRAME SCHEDULE**  
 NTS REF: --

07/01/08 ISSUED FOR PERMIT  
 06/26/08 100% REVIEW SET

Mark	Date	Description

Drawing Status

Drawing Title  
**DOOR & FRAME SCHEDULE, ELEVATIONS & DETAILS**  
 PA / PE: PSC Drawn By: JGJ  
 Drawing Number  
**A60.1**