

NOTE: QUANTITY, AND LOCATION OF OFF SWITCHES AS SHOWN ON FLOOR PLAN DRAWINGS.

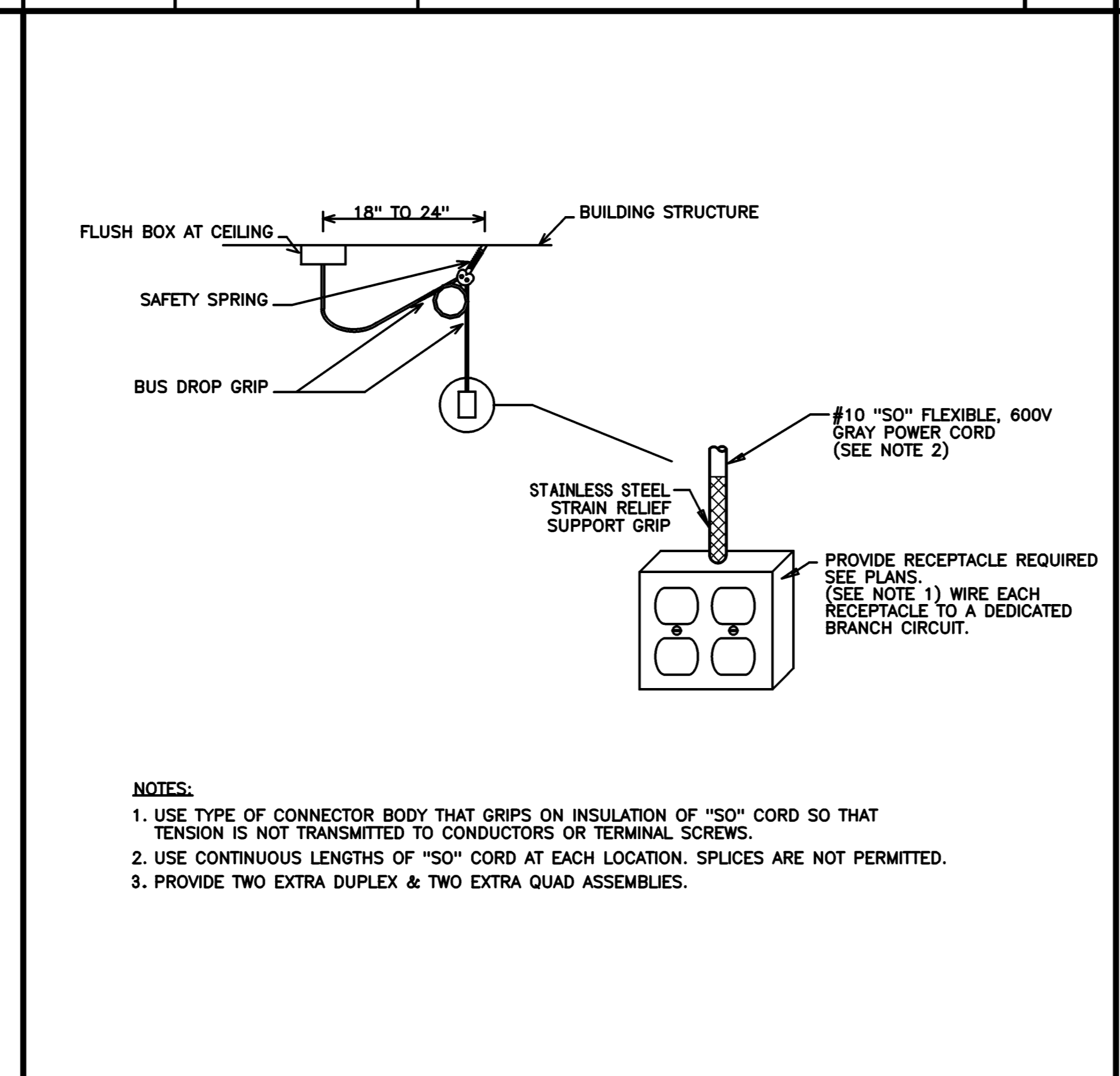
WIRE POWER PACK TO CIRCUIT INDICATED ON FLOOR PLANS.

LIGHTING FIXTURE SCHEDULE

ALL FIXTURES SHALL BE FURNISHED COMPLETE WITH ALL HARDWARE LAMPS, HANGERS, FITTINGS, ETC. FOR A COMPLETE AND PROPER INSTALLATION

TYPE	MANUFACTURER	CATALOG NO.	MTG.	VOLT	LAMPS			REMARKS/BALLAST INFORMATION
					NO.	WATT	TYPE	
A	2x4 2-LAMP VOLUMETRIC LENSED, STEP DIMMING, GRID MOUNT LITHONIA LIGHTING	2RTS-28TS-MVOLT-GE95S-NAAB	R	120	2	28	(2) 28W T5 F28W/T5/830	BALLAST: (1) ELECTRONIC DUAL-LEVEL 2-LAMP.
B	1x4 2-LAMP VOLUMETRIC LENSED, GRID MOUNT LITHONIA LIGHTING	RTS-228TS-MVOLT-GE910PS-NAAB	R	120	2	28	(2) 28W T5 F28W/T5/830	
C	BFT 2-LAMP (TANDEM) STRIP FIXTURE WITH WIRE GUARDS LITHONIA LIGHTING	TC-2T832-MVOLT-GE10IS-WGCSMR-NAAB	P	120	4	32	(4) 32W T8 F32W/4L/SP30/HL/ECO	MOUNT UP 12"-0".
D	EXTERIOR WALL MOUNT WITH PHOTOCELL LITHONIA LIGHTING	WSR-70M-MD-TB-PE	W	120	1	70	MH	MOUNT 10"-0" ABOVE LOADING DOCK.
BATT	EMERGENCY LIGHTING BATTERY PACK AND REMOTE HEADS - 12V LITHONIA LIGHTING	ELT125-TWO HEADS/MT-ELA MST	W	120/12				SINGLE HEAD CHANGE PREFIX TO "1 P". REMOTE HEADS: DB-MB1 & 2-DB-MB2. MOUNT UP 7"-6".
EXIT	LED EXIT SIGN - SELF CONTAINED SURE LITES	CAX-717000-RW	UNIV	120	1	LED	LED	MOUNT AS REQUIRED - WALL OR PENDANT PROVIDE FACE(S) AS REQUIRED.

OCCUPANCY SENSOR CONTROL DIAGRAM C3



LIGHTING FIXTURE SCHEDULE C1

VOLTAGE: 120/208
PH & WIRES: 3P 4W
BUSES: 225A

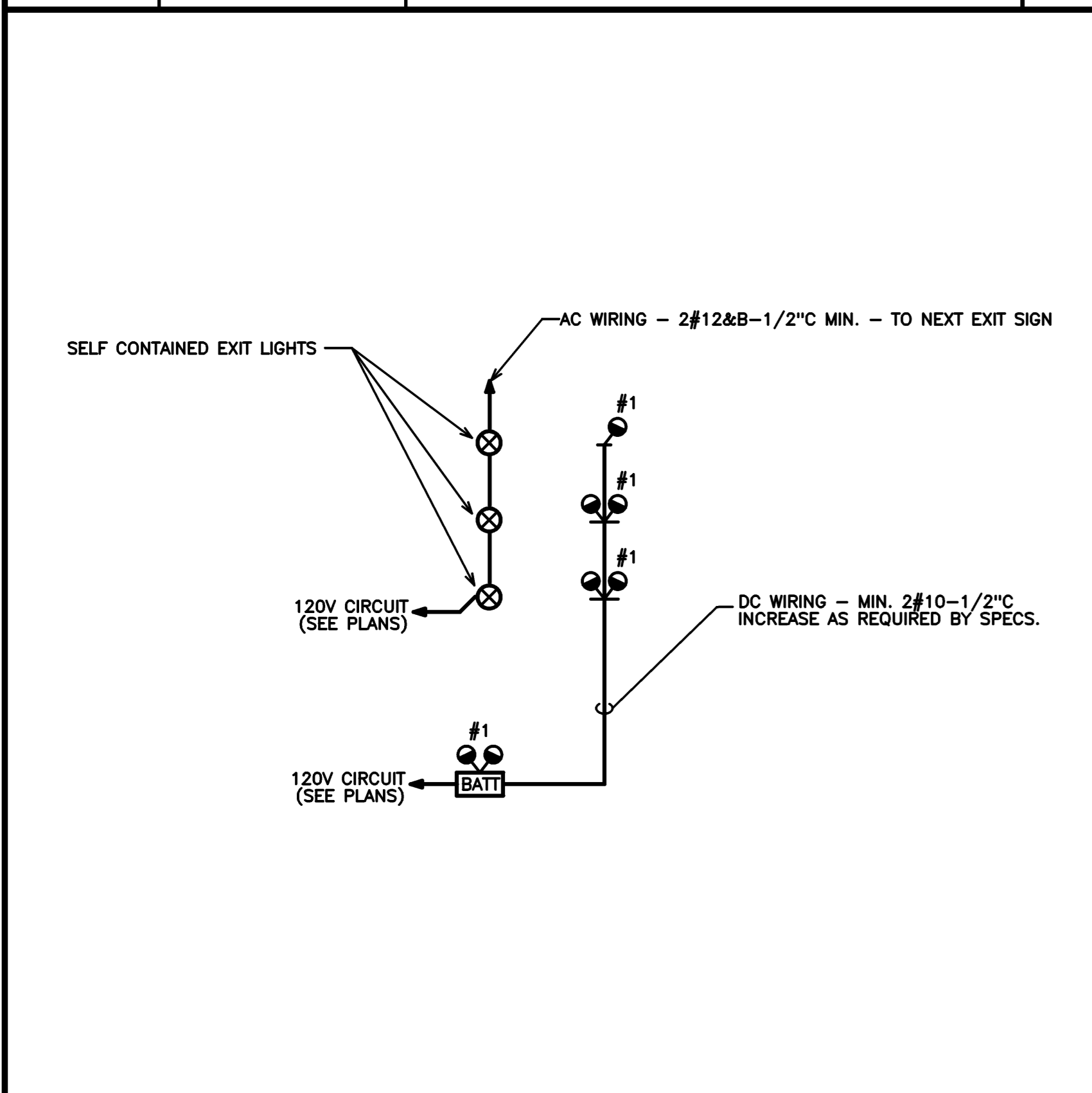
MAIN BREAKER: 200A MAIN BRKR
AIC RATING: SEE SPECS
MOUNTING: FLUSH

LOCATION: CORRIDOR
FEEDER: #4/O&B-3"C

LOAD DESCRIPTION	PH A	PH B	PH C	WATTS	VA	WATTS	VA	WATTS	VA	WATTS	VA	WATTS	VA	WATTS	VA	WATTS	VA	WATTS	VA
TUB 1 OF 2 - REMARKS:																			
RCPTS - OFFICE #1	20	1	1	1	1200	2084	---	---	884	2	2	1	20	LTG - OFFICE AREA					
RCPTS - OFFICE #2	20	1	3	3	1200	---	---	750	4	4	1	20	LTG - STORAGE/WORK AREA						
RCPTS - OFFICE #3	20	1	5	5	1200	---	---	1200	0	6	6	1	20	SPARE					
RCPTS - LOUNGE	20	1	7	7	400	---	---	400	0	8	8	1	20	SPARE					
RCPTS - LOUNGE	20	1	9	9	400	---	---	400	0	10	10	1	20	SPARE					
RCPTS - LOUNGE	20	1	11	11	400	---	---	400	0	12	12	1	20	SPARE					
RCPTS - LOUNGE	20	1	13	13	400	---	---	400	0	14	14	1	20	SPARE					
RCPTS - LOUNGE - REF	20	1	15	15	700	---	---	700	0	16	16	1	20	SPARE					
RCPTS - CORRIDOR/TOILETS	20	1	17	17	1000	---	---	1000	0	18	18	1	20	SPARE					
RCPTS - DATA ROOM	20	1	19	19	400	---	---	400	0	20	20	1	20	SPARE					
RCPTS - DATA ROOM	20	1	21	21	400	---	---	400	0	22	22	1	20	SPARE					
RCPTS - DATA ROOM	30	1	23	23	600	---	---	600	0	24	24	1	20	SPARE					
SPARE	20	1	25	25	0	5	---	---	5	26	26	1	20	EXIT SIGNS/DUCT SMOKES					
SPARE	20	1	27	27	0	---	---	1900	---	3800	28	28	2	30	WATER HEATER				
SPARE	20	1	29	29	0	---	---	1900	---	30	---	---	---	---	---	---	---	---	---
SPARE	20	1	31	31	0	1920	---	---	1920	32	32	1	20	F-1					
SPARE	20	1	33	33	0	---	---	530	---	530	34	34	1	20	UNIT HEATER				
SPARE	20	1	35	35	0	---	---	1400	---	1400	36	36	1	20	EF-1 & EF-2				
SPARE	20	1	37	37	0	4000	---	---	12000	38	38	3	50	RTU-1					
SPARE	20	1	39	39	0	---	---	4000	---	40	---	---	---	---	---	---	---	---	---
RCPTS - ROOF TOP HVAC	20	1	41	41	200	---	---	4200	---	42	---	---	---	---	---	---	---	---	---
TUB 2 OF 2 - REMARKS:																			
RCPTS - EQUIP RM #2	20	1	43	43	400	800	---	---	400	44	44	1	20	RCPTS - EQUIP RM #1					
RCPTS - EQUIP RM #2	20	1	45	45	400	---	---	800	---	400	46	46	1	20	RCPTS - EQUIP RM #1				
RCPTS - EQUIP RM #2	20	1	47	47	400	---	---	800	---	400	48	48	1	20	RCPTS - EQUIP RM #1				
RCPTS - EQUIP RM #2	20	1	49	49	400	800	---	---	400	50	50	1	20	RCPTS - EQUIP RM #1					
AIR COMPRESSOR	20	3	51	51	4752	---	---	1984	---	400	52	52	1	20	RCPTS - EQUIP RM #1				
---	---	---	53	---	---	---	---	1984	---	400	54	54	1	20	RCPTS - EQUIP RM #1				
---	---	---	55	---	---	---	---	1984	---	400	56	56	1	20	RCPTS - EQUIP RM #1				
---	---	---	59	---	---	---	---	---	---	---	---	---	---	---	---	---	---	---	---
WELDER	50	2	57	57	9600	---	---	5200	---	400	58	58	1	20	RCPTS - EQUIP RM #1				
---	---	---	59	---	---	---	---	---	---	5200	400	60	60	1	20	RCPTS - HOIST - EQUIP RM #1			
RCPTS - SANDER	20	2	61	61	1680	840	---	---	---	0	62	62	1	20	SPARE				
---	---	---	63	---	---	---	---	840	---	0	64	64	1	20	SPARE				
TABLE SAW	30	2	65	65	4000	---	---	---	---	2000	0	66	66	1	20	SPARE			
---	---	---	67	---	---	---	---	2000	---	0	68	68	1	20	SPARE				
SPARE	20	1	69	69	0	---	---	0	---	0	70	70	1	20	SPARE				
SPARE	20	1	71	71	0	---	---	0	---	0	72	72	1	20	SPARE				
SPARE	20	1	73	73	0	0	---	---	---	0	74	74	1	20	SPARE				
SPARE	20	1	75	75	0	---	---	0	---	0	76	76	1	20	SPARE				
RCPT - RADIAL ARM SAW	20	1	77	77	1560	---	---	1960	---	400	78	78	1	20	RCPTS - PARTS RM				
RCPT - DUST COLL	20	1	79	79	1590	1990	---	---	---	400	80	80	1	20	RCPTS - PARTS RM				
SERVICE BUZZER	20	1	81	81	120	---	---	520	---	400	82	82	1	20	RCPTS - PARTS RM				
RCPT - JOINTER	20	1	83	83	1104	---	---	---	---	1704	600	84	84	1	20	RCPTS - PARTS RM			
TOTAL AMPS: 169.9																TOTAL WATTS: 61195			

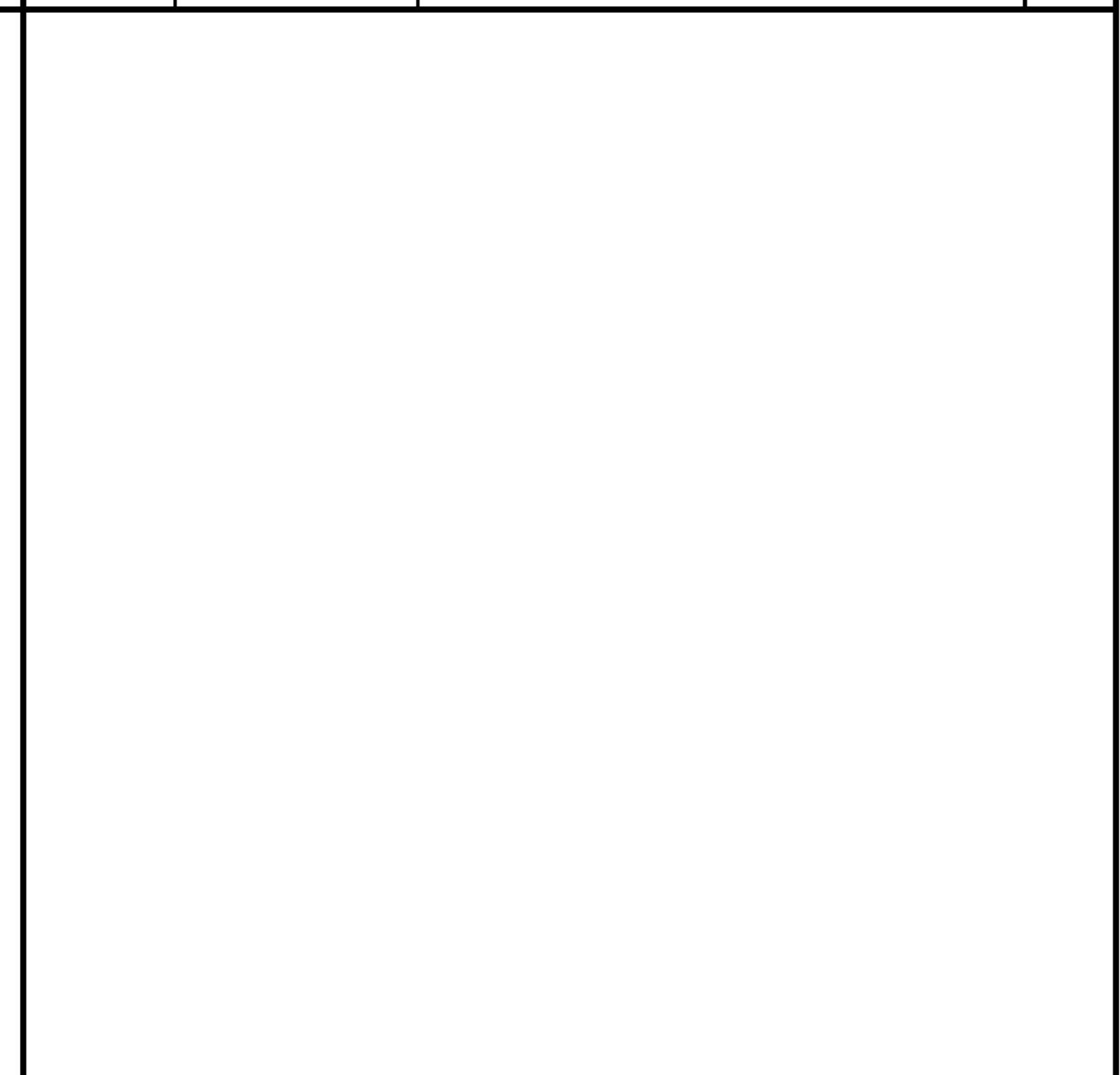
REMARKS: SERVICE ENTRANCE RATED

WALL MOUNTED OCCUPANCY SENSOR SWITCH WIRING DIAGRAM B4



EMERGENCY LIGHTING/EXIT SIGN WIRING A4

PENDANT CORD AND HANGER DETAIL B3



NOT USED A3

PANELBOARD SCHEDULE A1