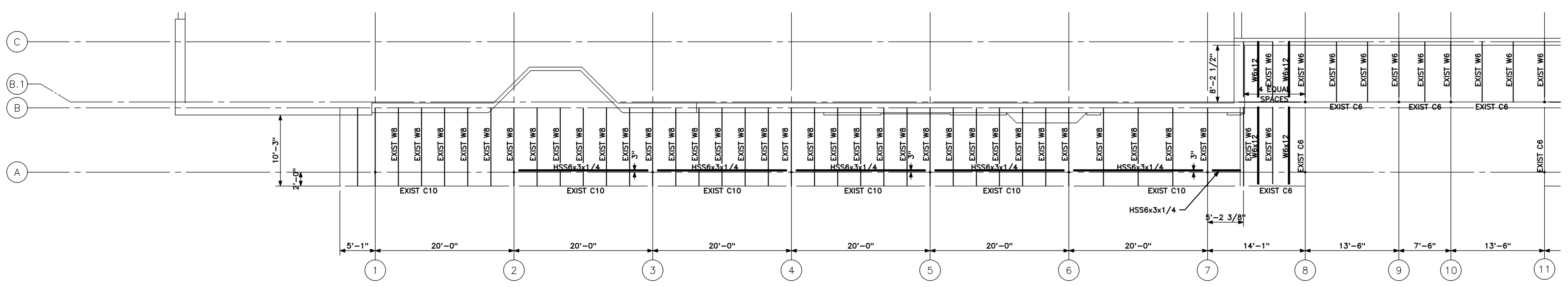
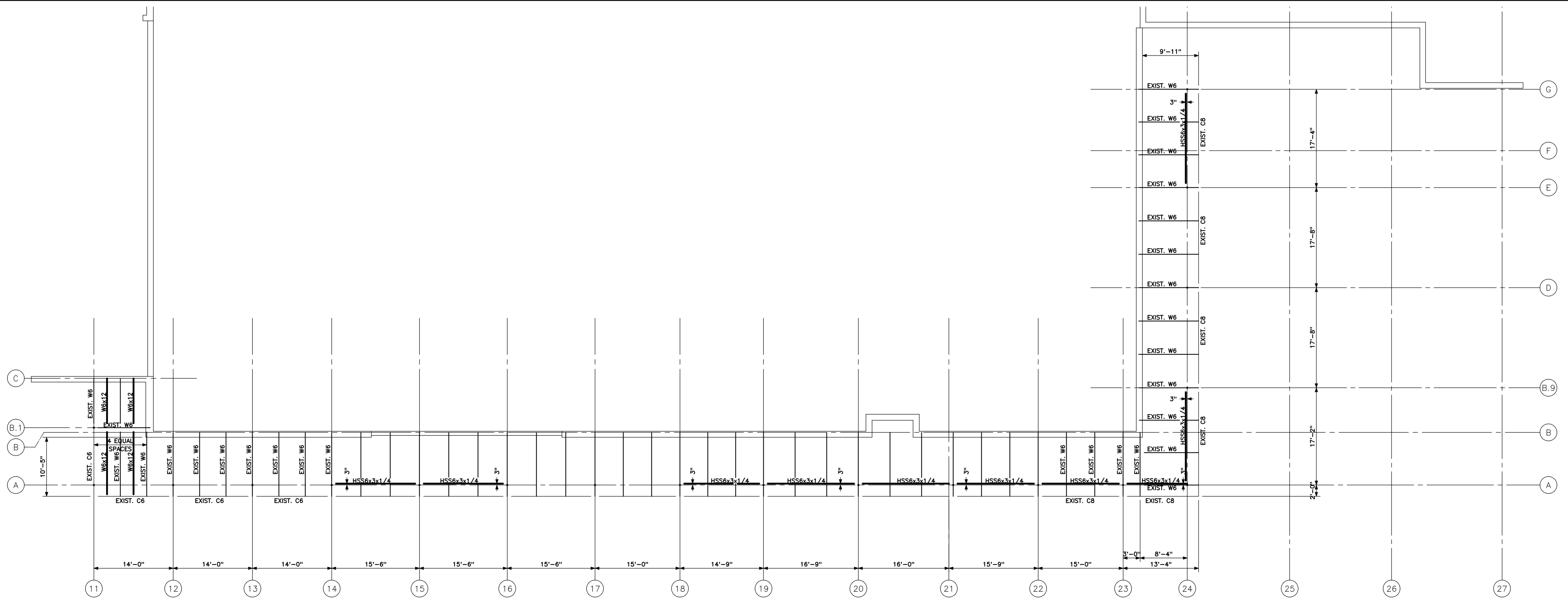


- NOTES:
- ALL STEEL BEAMS TO CONFORM WITH ASTM A992 (Fy = 50 KSI)
 - ALL STEEL TUBE COLUMNS TO CONFORM WITH ASTM A500 GRADE B (Fy = 46 KSI)
 - ALL STEEL TUBES TO BE FIELD WELDED TO EXISTING FRAMING.
 - GC TO VERIFY LOCATION OF ALL EXISTING FRAMING PRIOR TO STEEL FABRICATION.
 - GC TO VERIFY ALL EXISTING DIMENSIONS AND TO REPORT ANY DISCREPANCIES.
 - NEW STEEL BEAMS TO BE CONNECTED TO EXISTING FRAMING WITH FIELD DRILLED HOLES AND BOLTED CONNECTIONS OR CLIP ANGLES AND FIELD WELDS.
 - DESIGN LOADS:
DESIGN CODE = 2003 IBC AND ASCE 7-02.
SNOW LOAD - Pg = 50 PSF
Ce = 1.0
Cs = 1.2
Is = 1.0
Pf = 42 PSF
WIND LOAD -
BASIC WIND SPEED (V) = 100 MPH
(3 SEC. GUST)
Iw = 1.00 (CATEGORY II)
EXPOSURE CATEGORY - C
INT. PRESSURE COEF.
(GCpf) = +/- 0.18



FRAMING PLAN AREA A
1/8" = 1'-0" REF: NA

C1



FRAMING PLAN AREA B
1/8" = 1'-0" REF: NA

A1

Mark	Date	Description
03-10-08		ISSUED FOR BID
Issue Dates		

Drawing Status

Drawing Title
FRAMING PLAN
PA / PE: **BKB** Drawn By: **BMB**
Drawing Number

S20.1