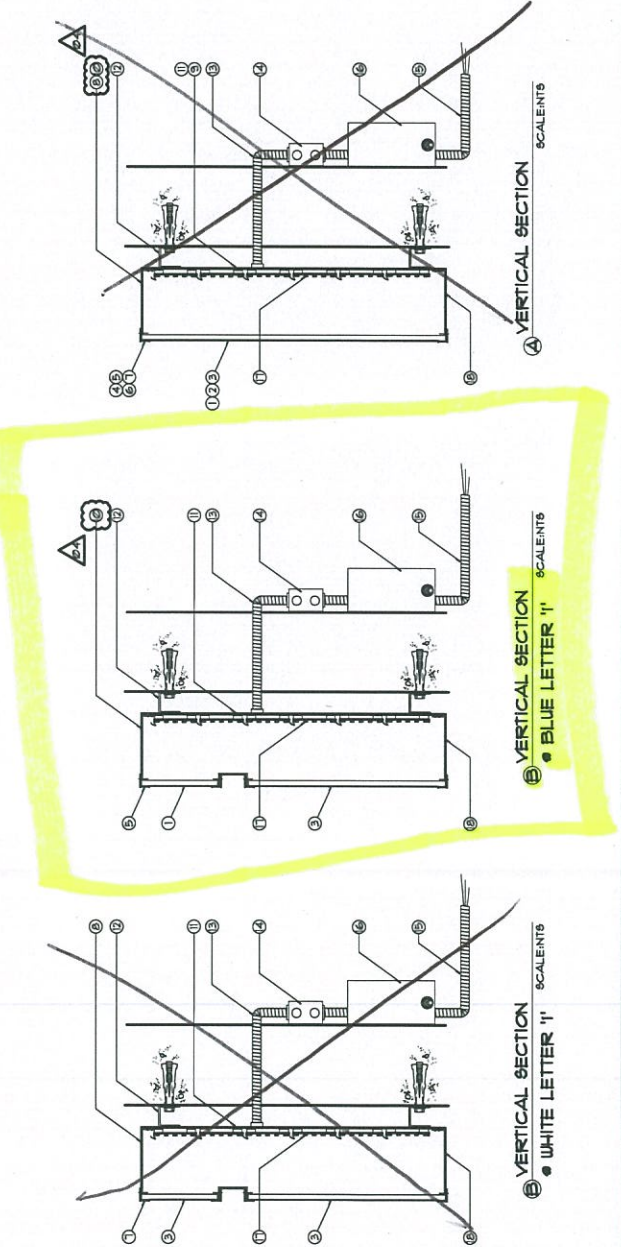


NOTES:

1. SYMBOL FACE TO BE WHITE TRANSLUCENT ACRYLIC #441, THICKNESS PER TABLE FIRST SURFACE DECORATE WITH 3" FILM BLUE.
2. SYMBOL FACE TO BE WHITE TRANSLUCENT ACRYLIC #1329, THICKNESS PER TABLE FIRST SURFACE DECORATE WITH 3" FILM RED.
3. LETTER FACE TO BE WHITE TRANSLUCENT ACRYLIC #1329, THICKNESS PER TABLE. SHOWN USE WHEN LETTERS TO BE MOUNTED AT 17'-0" AFF. OR LOWER. PAINT FINISH TO MATCH LETTER FACE.
4. JEWELITE TRIM CAP #192.46 USE WHEN USE ON BLUE PORTION OF SYMBOL WHEN LETTER SET IS MOUNTED ABOVE 17'-0".
5. JEWELITE TRIM CAP #192.46 USE ON RED PORTION OF SYMBOL WHEN LETTER SET IS MOUNTED ABOVE 17'-0".
6. JEWELITE TRIM CAP #192.46 USE ON LETTERS WHEN LETTER SET IS MOUNTED ABOVE 17'-0".
7. RETURN PAINT FINISH ALL EXPOSED EXTERIOR SURFACES CHAMPAGNE METALLIC. SEMI-GLOSS FINISH, PAINT ALL INTERIOR SURFACES WITH SPRAY-LAT OR APPROVED EQUAL ENHANCEMENT PAINT.

8. 2063 ALUM. SYMBOL BACKS, PAINT FINISH EXTERIOR CHAMPAGNE METALLIC. SEMI-GLOSS FINISH, PAINT INTERIOR SURFACES WITH SPRAY-LAT STARBRITE WHITE LIGHT ENHANCEMENT PAINT OR APPROVED EQUAL. STAPLE TO LETTER RETURNING WITH STAINLESS STEEL STAPLES AS REQD.
9. 2060 ALUM. RETURNS, PAINT FINISH ALL INTERIOR SURFACES WITH SPRAY-LAT STARBRITE WHITE LIGHT ENHANCEMENT PAINT OR APPROVED EQUAL.
10. 2063 ALUM. LETTER BACKS, PAINT FINISH EXTERIOR CHAMPAGNE METALLIC. SEMI-GLOSS FINISH, PAINT INTERIOR SURFACES WITH SPRAY-LAT STARBRITE WHITE LIGHT ENHANCEMENT PAINT OR APPROVED EQUAL.
11. 2063 ALUM. LETTER BACKS, PAINT FINISH EXTERIOR CHAMPAGNE METALLIC. SEMI-GLOSS FINISH, PAINT INTERIOR SURFACES WITH SPRAY-LAT STARBRITE WHITE LIGHT ENHANCEMENT PAINT OR APPROVED EQUAL.
12. SECURE TO EXISTING WALL AS REQUIRED USING MOUNTING CLIPS, DO NOT EXCEED 1 1/2" SPACING.
13. 1/2" SEAL, TITE FLEXIBLE CONDUIT AS NEEDED TO MEET ALL U.L. REQUIREMENTS FOR WET LOCATIONS.
14. 1/2" RIGID PVC CONDUIT AS REQD. TO MEET U.L. SPECIFICATIONS FOR APPLICATION.
15. TRANSFORMER TO BE SPECIFIED BY ELECTRICAL ENGINEER.
16. LED LIGHTING SYSTEM TO BE ELECTRICAL 24 SERIES RED AND BLUE UNITS PER ELECTRICAL DRAWING SPECIFICATION. SEE ELECTRICAL DRAWING #17-06 FOR SPECIFICATION AND LAYOUT.
17. PROVIDE WEEP HOLES AS REQD. TO MEET U.L. SPECIFICATIONS.



These documents are for design intent and shall be used only as a guide to produce the finished site and functions shown. Nothing contained in these documents shall be construed as a design for any unimproved aluminum. The fabricator/contractor shall be responsible for all structural, electrical, mechanical and foundation requirements. See General Specifications for additional requirements. These documents were not produced under an architectural services agreement. These drawings are part of an original unimproved design by Monigle Associates, Inc. The detailing and fabrication/contractor shall be responsible for all information contained on these plans shall not be reproduced, copied or utilized except for the specific project for which they were created, without previous written authorization from Monigle Associates, Inc. © Monigle Associates, Inc. "All Rights Reserved" 350 Adams Street - Denver, Colorado 80205

Released To:	BANK OF AMERICA
Job Number:	76173
Drawn By:	JLD
Date:	12.22.05

Rev No 01	08.15.08
Rev No 02	08.18.08
Rev No 03	10.23.07
Rev No 04	10.25.07

Channel Letter Sections

09.08/06

MONIGLE ASSOCIATES

MATERIAL SPECIFICATIONS

- PAINT
- CHAMPAGNE METALLIC - EITHER AKZO-NOBEL # BK 2567, HATTHEUS # MP 2334, HATTHEUS # MP 2335, OR HATTHEUS #VOC12128P (VOC COMPLIANT)
 - RED - HATTHEUS RED # MP 43634,
 - AKZO-NOBEL #SIGN 2093
 - BLUE - HATTHEUS BLUE # MP 21610R 6959,
 - WHITE - HATTHEUS WHITE # MP 21609R 6959.
- FILM
- BLUE - 3" # 3633-0772
 - WHITE - 3" # 3633-10
 - DIFFUSER - 3" # 3633-10
 - WHITE - 3" # 3633-20
- ACRYLIC
- CLEAR ACRYLSTEEL OR APPROVED EQUAL
 - FILM DECORATION CHANNEL LETTERS ONLY,
 - WHITE TRANSLUCENT ACRYLSTEEL #530 OR APPROVED EQ.

GENERAL NOTES:

- FINAL SIZING FOR ALL STRUCTURAL MEMBERS (i.e. COLUMNS, MATCH PLATES, CONNECTION BOLTS, ANCHOR BOLTS, FOUNDATIONS AND REINFORCEMENT) SHALL BE PROVIDED BY A LICENSED ENGINEER TO MEET OR EXCEED ALL APPLICABLE LOCAL, STATE, AND FEDERAL CODES.
- ENGINEER IS RESPONSIBLE FOR THE PREVENTION OF ANY LIGHT LEAKS.
- LEADS FROM BACK OF ILLUMINATED LETTERS / SYMBOL SHALL BE A MINIMUM OF 6'-0" IN LENGTH AND SHALL BE PROTECTED BY THE INTERIORS OF ALL CABINETS WITH SPRAY-LAT STAR BRITE WHITE LIGHT ENHANCEMENT PAINT.
- ALL PAINT TO BE TWO-PART POLYURETHANE.
- LETTERS TO BE FINISHED IN 3" 5053 SERIES FILM.