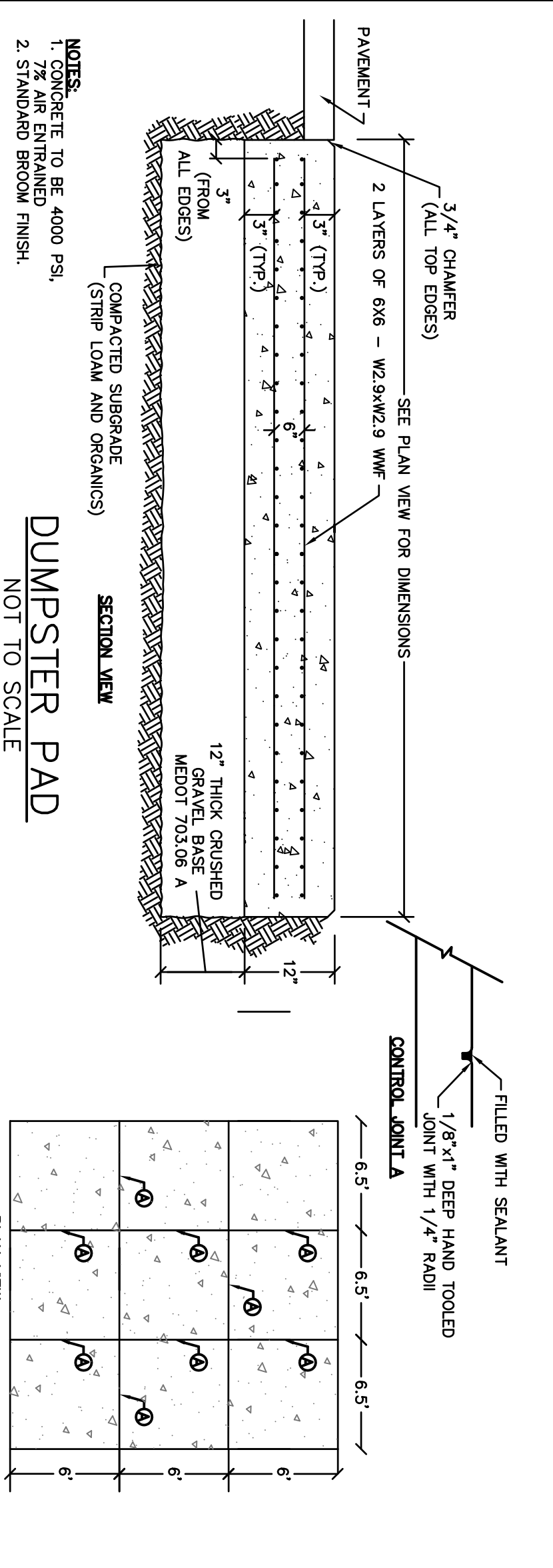
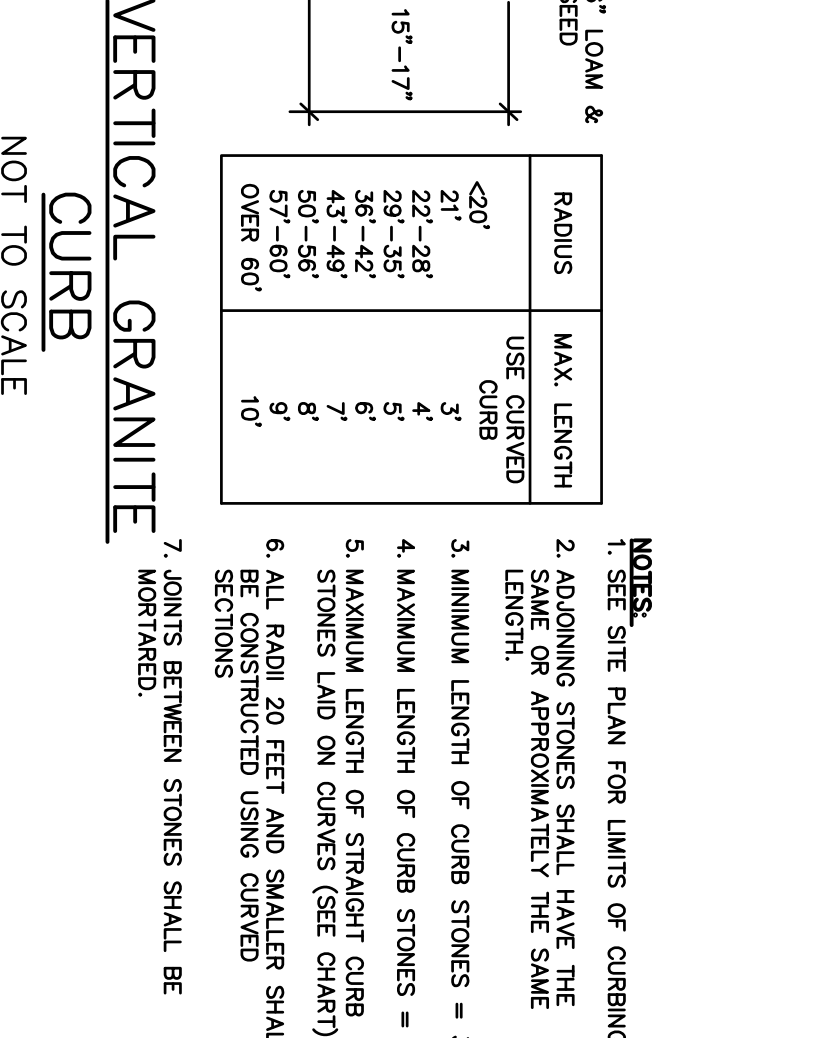


STANDARD DUTY PAVEMENT SECTION
NOT TO SCALE

NOTES:
1. SEE SITE PLAN FOR PAVEMENT WIDTH AND LOCATION.
2. SEE GRADING, DRAINAGE AND EROSION CONTROL PLAN FOR PAVEMENT SLOPE AND WEARING COURSE.
3. A TACK COAT SHALL BE PLACED ON TOP OF BINDER COURSE PAVEMENT PRIOR TO PLACING WEARING COURSE.
4. CONTRACTOR SHALL HAVE THE OPTION OF RECLAIMING THE EXISTING PAVEMENT AND REWORKING THE MATERIAL, THEN REUSING THE RECLAIMED MATERIAL, AS A PAVEMENT SUBGRADE.



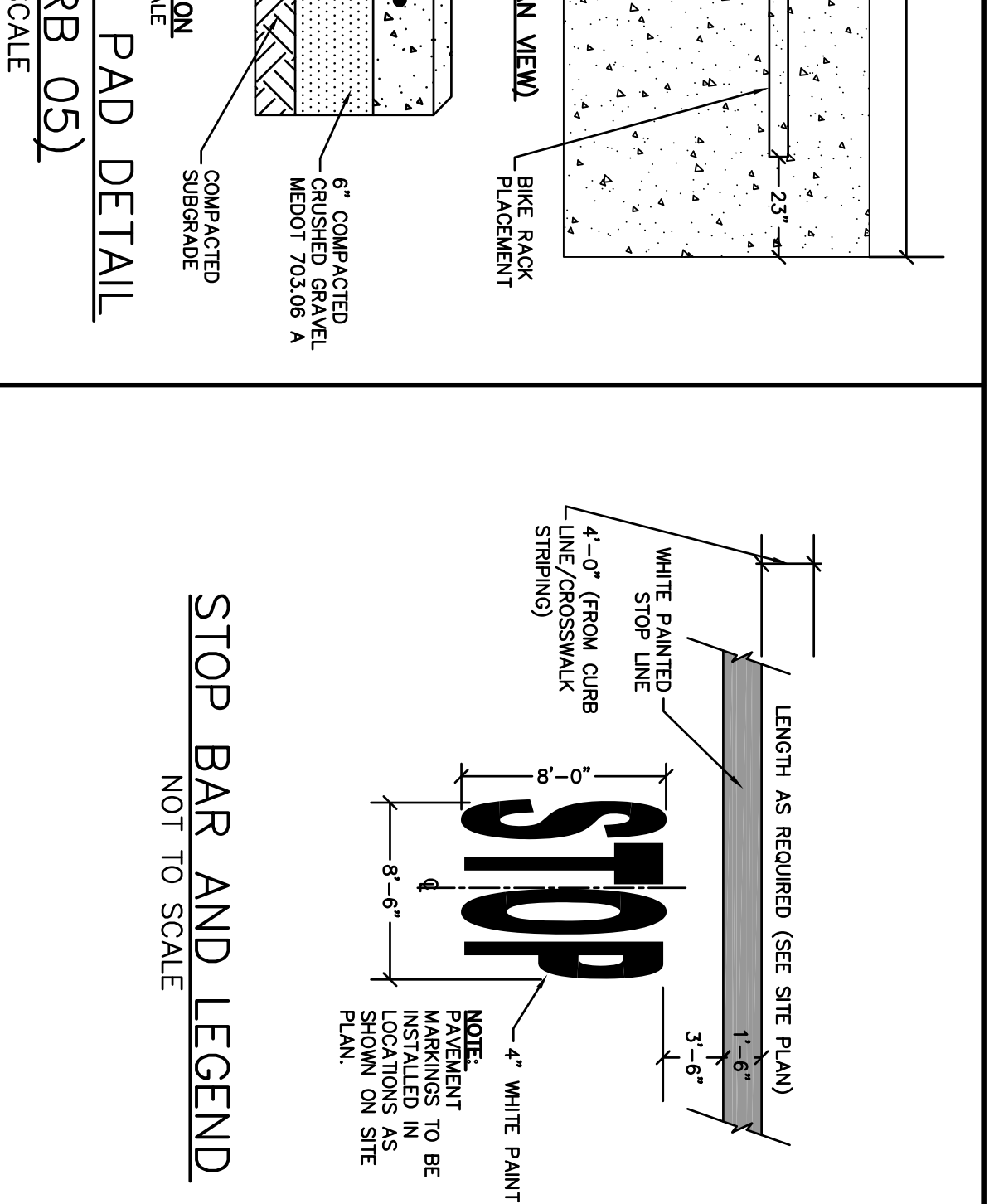
DUMPSTER PAD
NOT TO SCALE



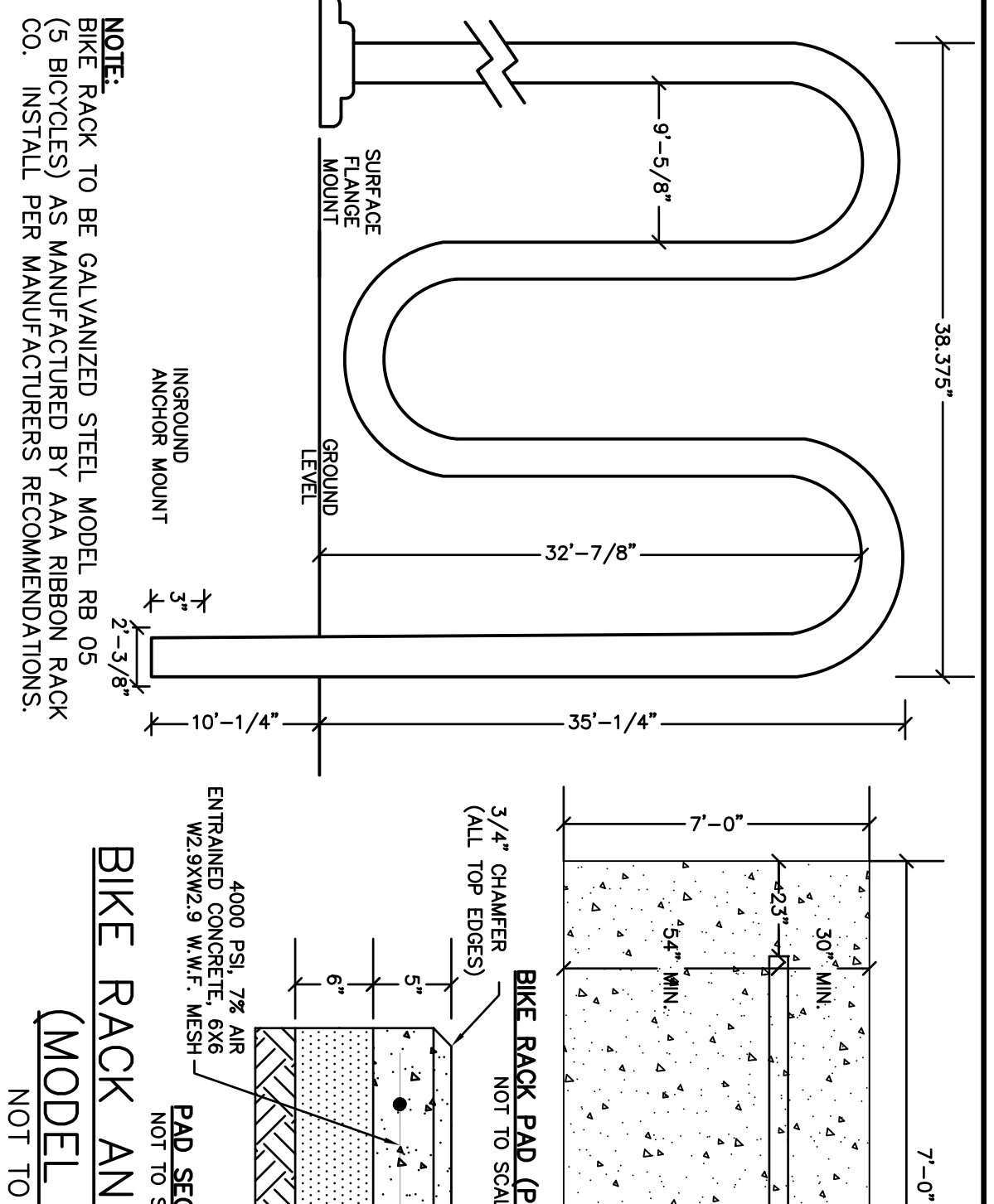
VERTICAL GRANITE CURB
NOT TO SCALE

RADIUS	MAX. LENGTH OF CURB
2'-0"	3'
2'-2"	4'
2'-4"	5'
2'-6"	6'
2'-8"	7'
2'-10"	8'
2'-12"	9'
OVER 6'-0"	10'

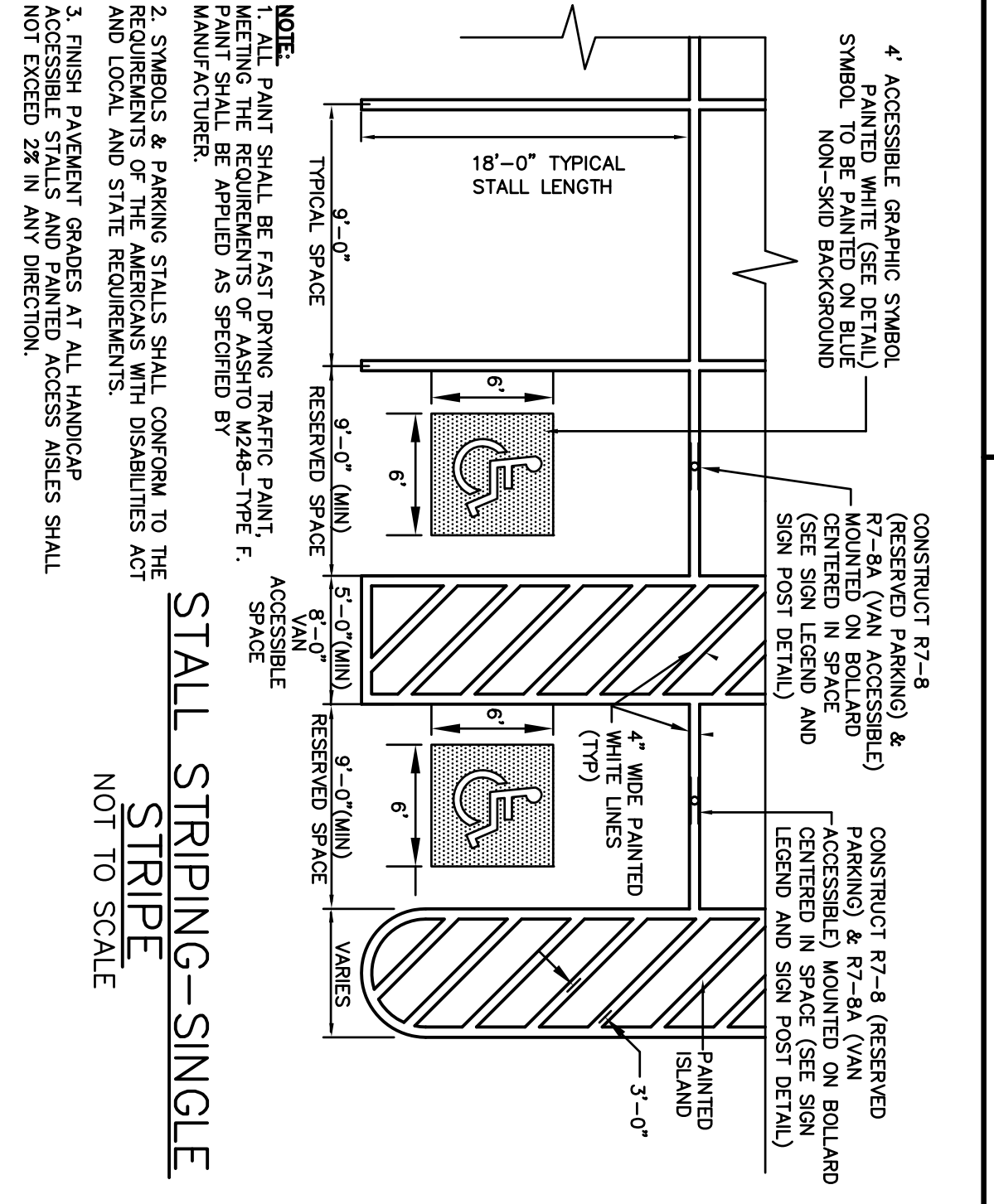
NOTES:
1. SEE SITE PLAN FOR LIMITS OF CURBING.
2. ADJOINING STONES SHALL HAVE THE SAME OR APPROXIMATELY THE SAME LENGTH.
3. MINIMUM LENGTH OF CURB STONES = 3'
4. MAXIMUM LENGTH OF CURB STONES = 10'
5. MAXIMUM LENGTH OF STRAIGHT CURB STONES LAD ON CURVES (SEE CHART).
6. ALL RADI 20 FEET AND SMALLER SHALL BE CONSTRUCTED USING CURBED SECTIONS.
7. JOINTS BETWEEN STONES SHALL BE MORTARED.



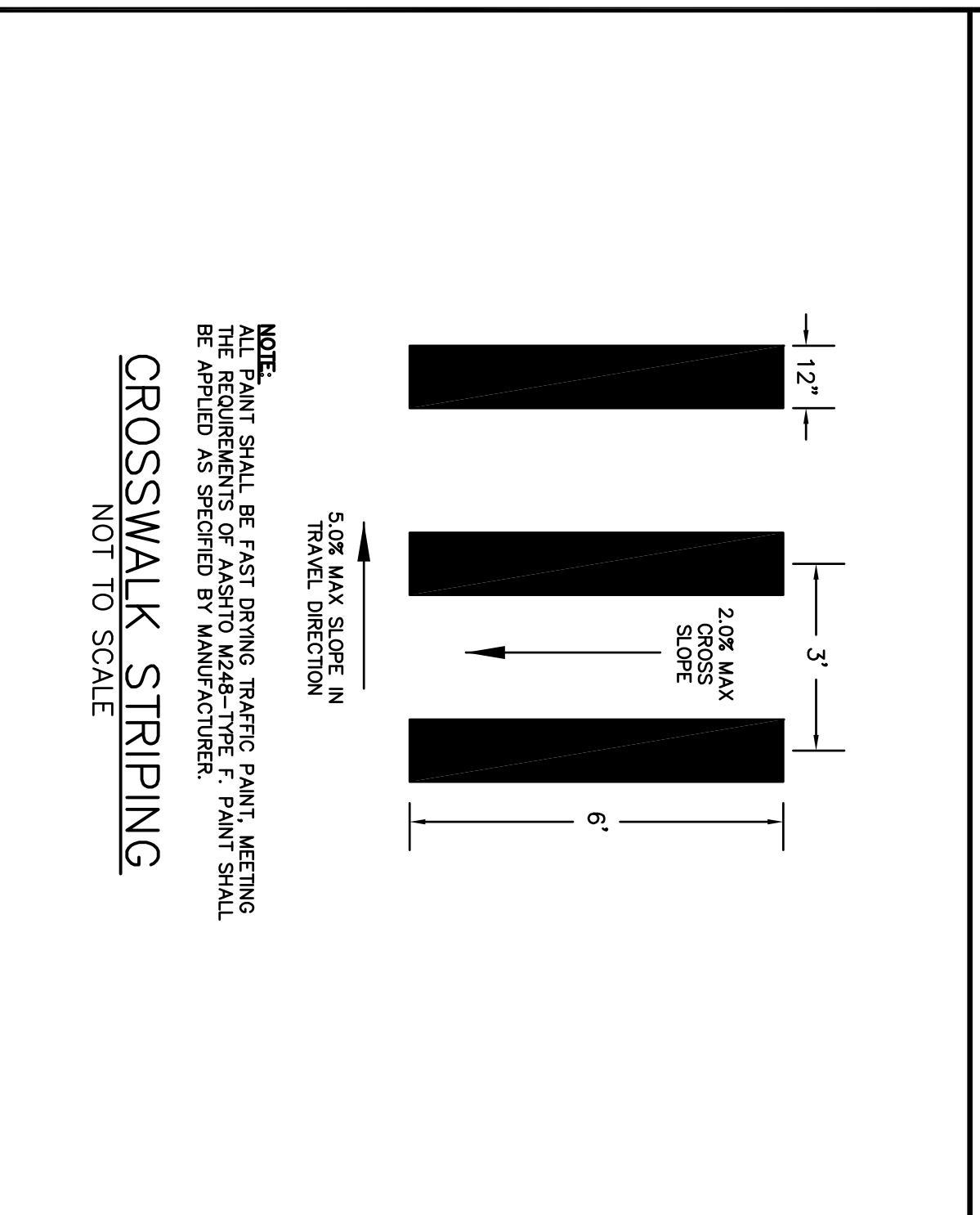
STOP BAR AND LEGEND
NOT TO SCALE



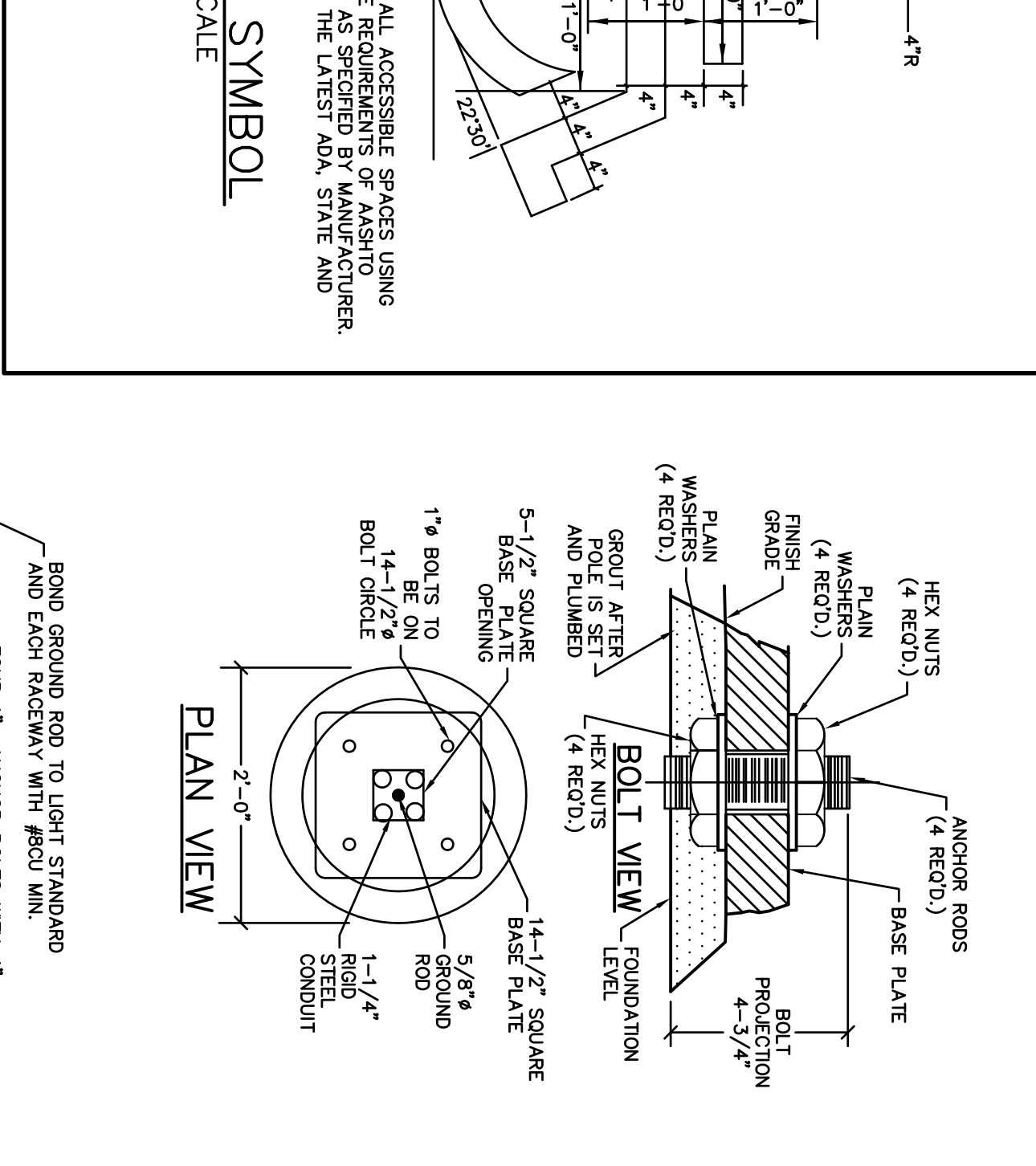
BIKE RACK AND PAD DETAIL (MODEL RB 05)
NOT TO SCALE



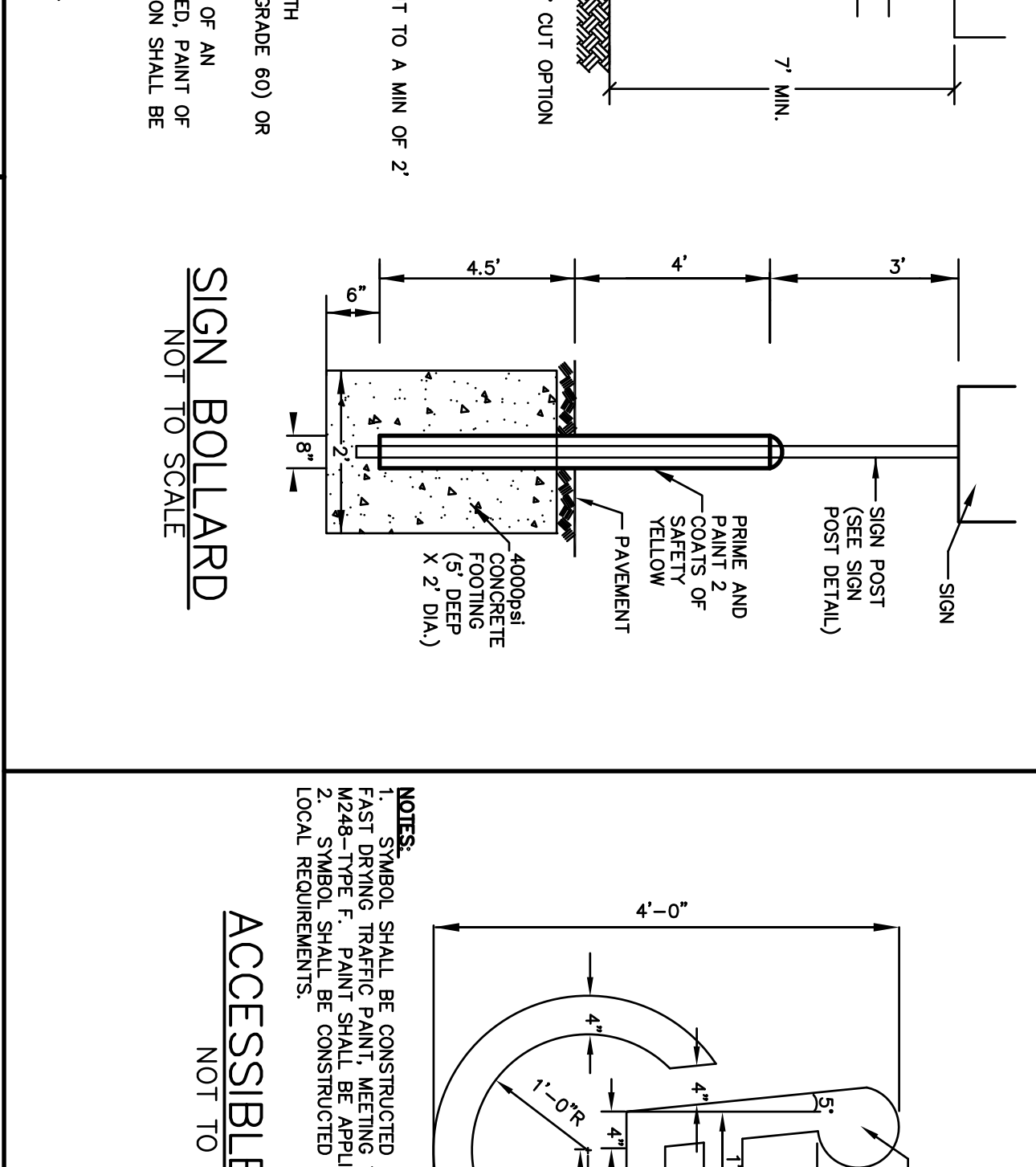
STALL STRIPING - SINGLE
NOT TO SCALE



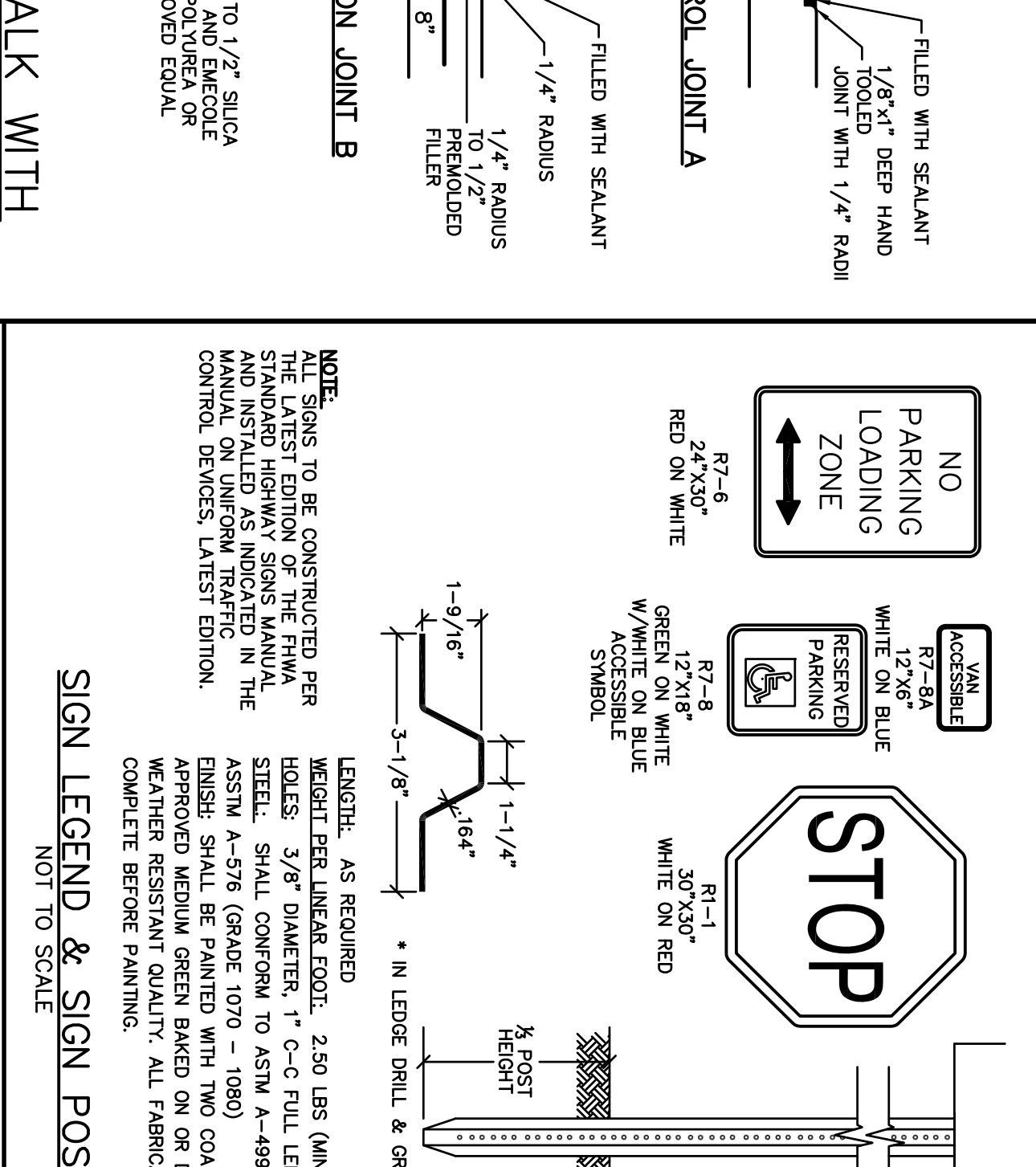
CROSSWALK STRIPING
NOT TO SCALE



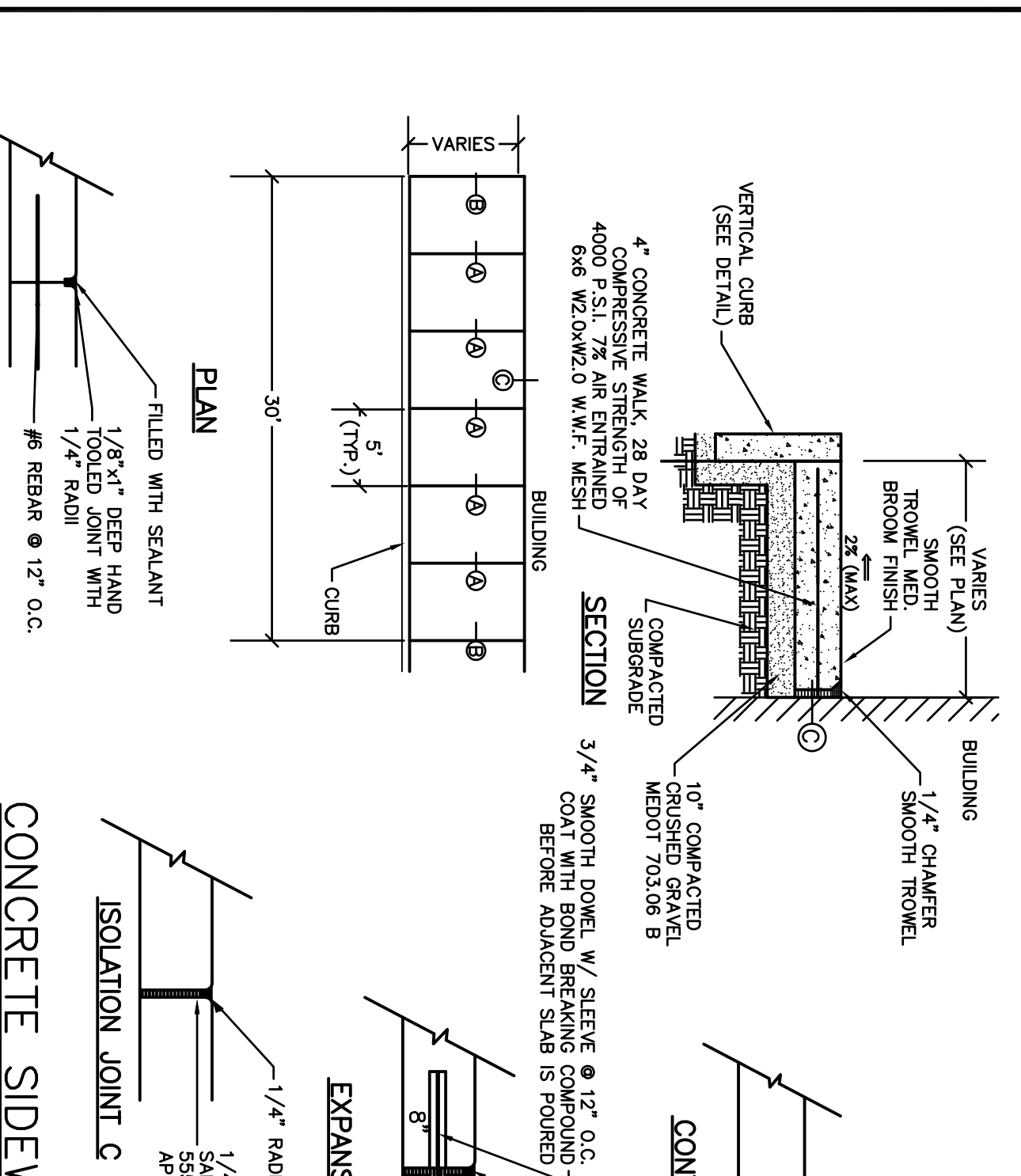
ACCESSIBLE SYMBOL
NOT TO SCALE



SIGN LEGEND & SIGN POST
NOT TO SCALE

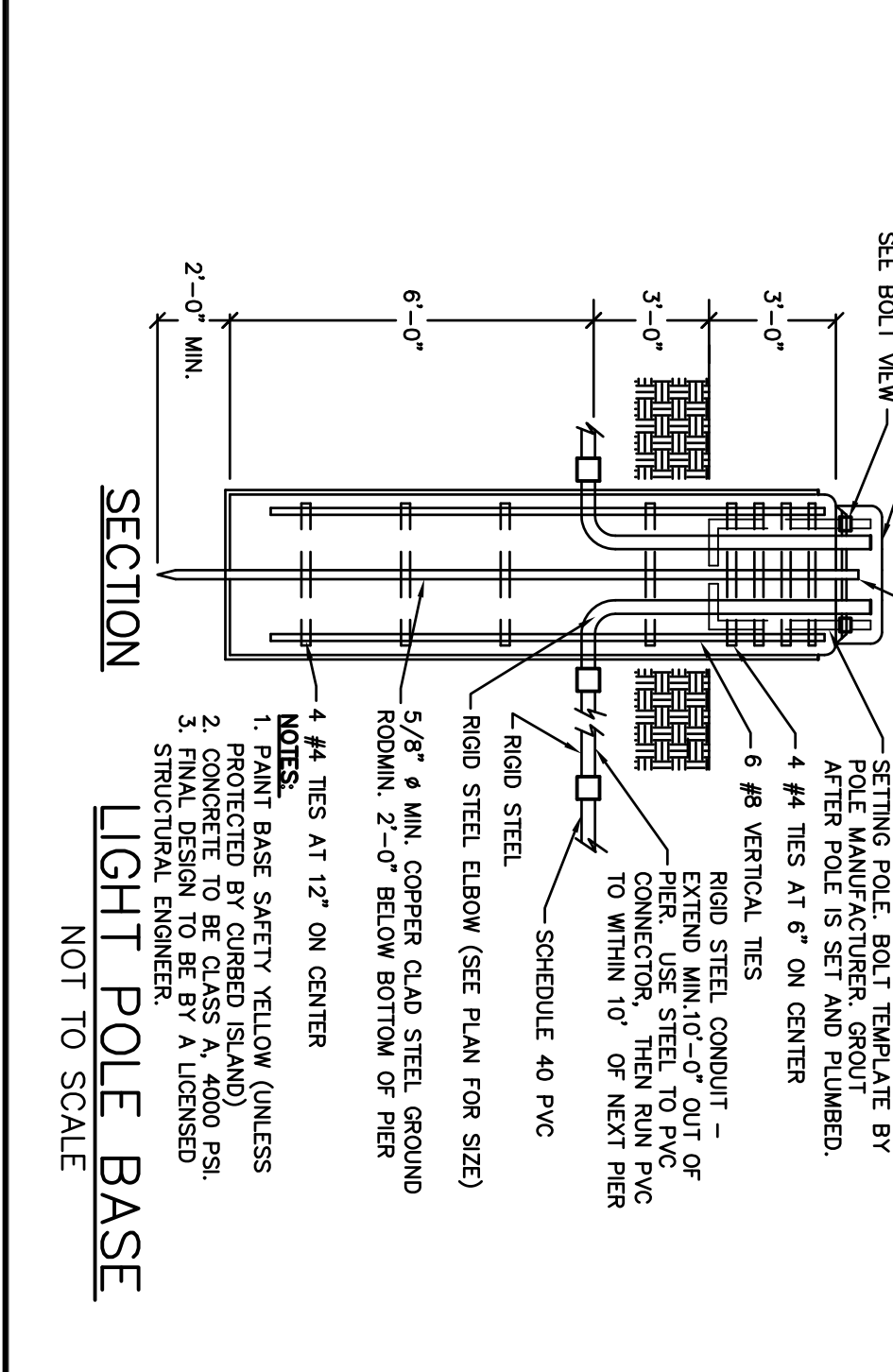


CONCRETE SIDEWALK WITH GRANITE CURB
NOT TO SCALE

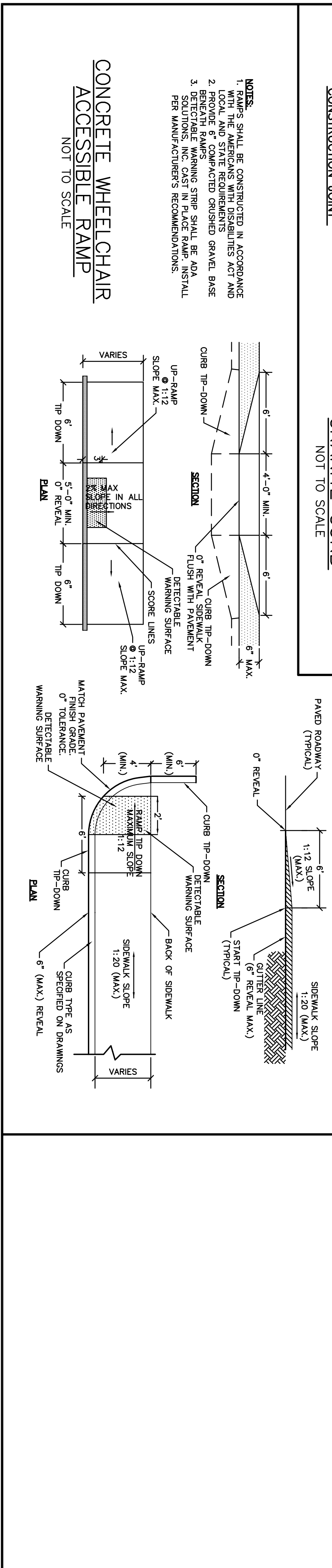


CONCRETE WHEELCHAIR ACCESSIBLE RAMP
NOT TO SCALE

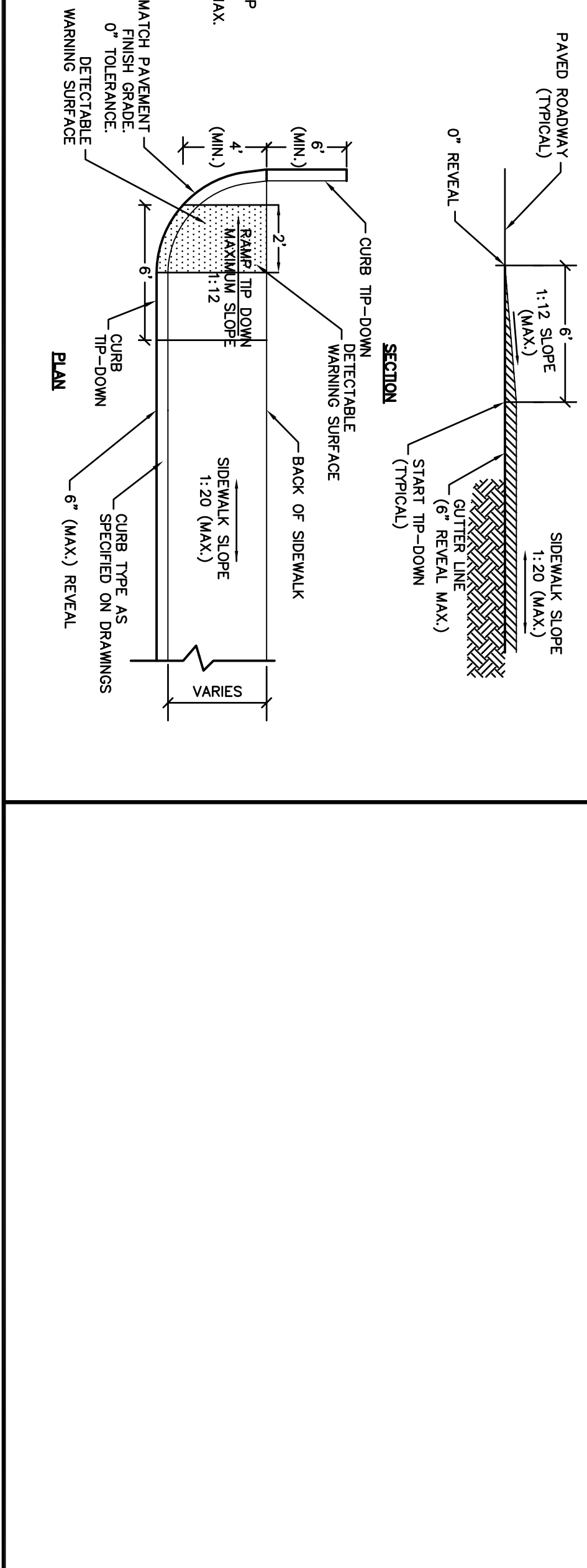
NOTES:
1. RAMPS SHALL BE CONSTRUCTED IN ACCORDANCE WITH THE AMERICANS WITH DISABILITIES ACT AND 2. PROVIDE 6" COMPACTED CRUSHED GRAVEL BASE
3. DETECTABLE WARNING STRIP SHALL BE ADJACENT TO THE RAMP AND SHALL BE INSTALLED PER MANUFACTURER'S RECOMMENDATIONS.



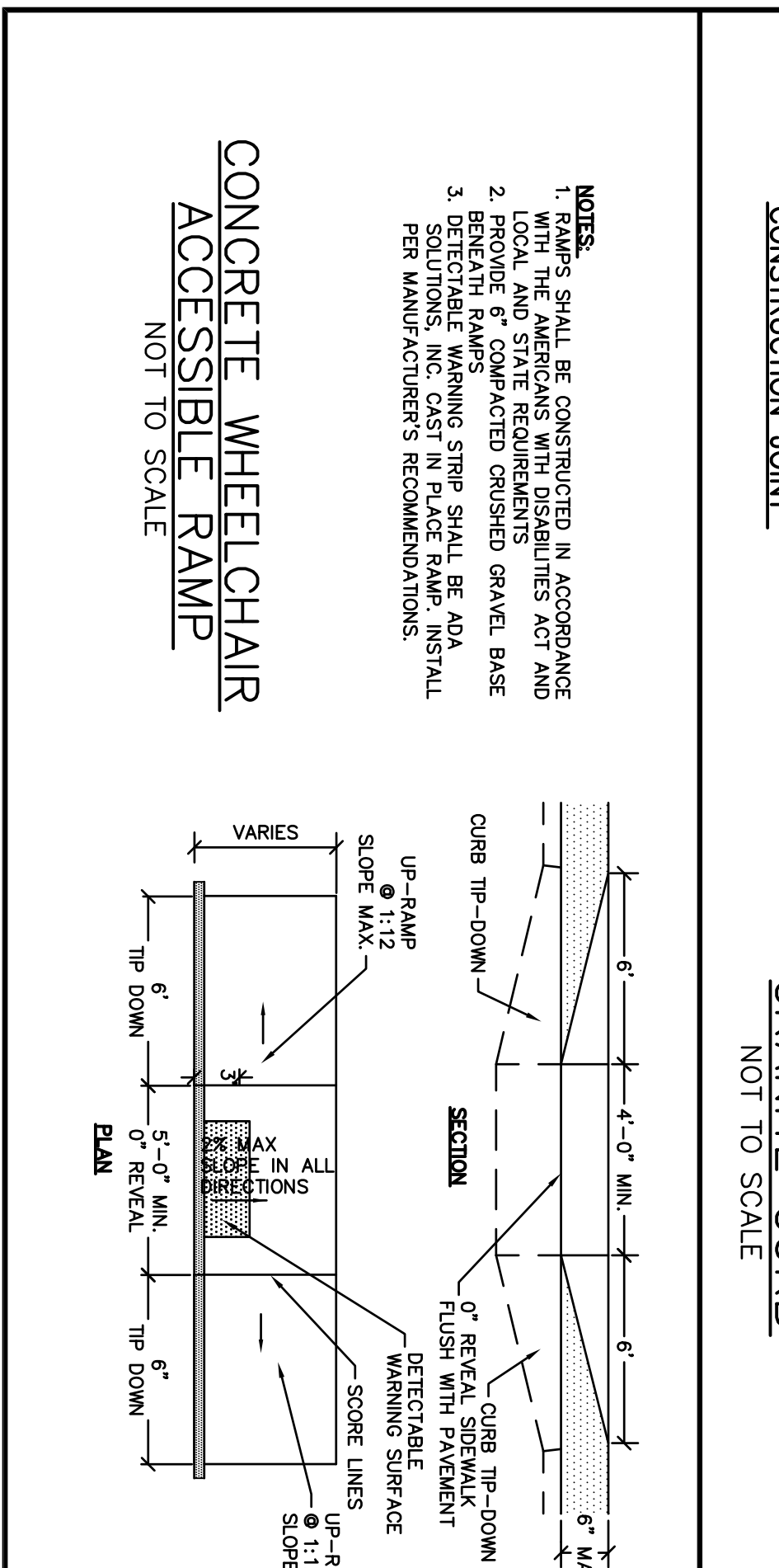
LIGHT POLE BASE
NOT TO SCALE



SIGN BOLLARD
NOT TO SCALE



CONCRETE SIDEWALK WITH GRANITE CURB
NOT TO SCALE



CONCRETE WHEELCHAIR ACCESSIBLE RAMP
NOT TO SCALE

NOTES:
1. RAMPS SHALL BE CONSTRUCTED IN ACCORDANCE WITH THE AMERICANS WITH DISABILITIES ACT AND 2. PROVIDE 6" COMPACTED CRUSHED GRAVEL BASE
3. DETECTABLE WARNING STRIP SHALL BE ADJACENT TO THE RAMP AND SHALL BE INSTALLED PER MANUFACTURER'S RECOMMENDATIONS.

